

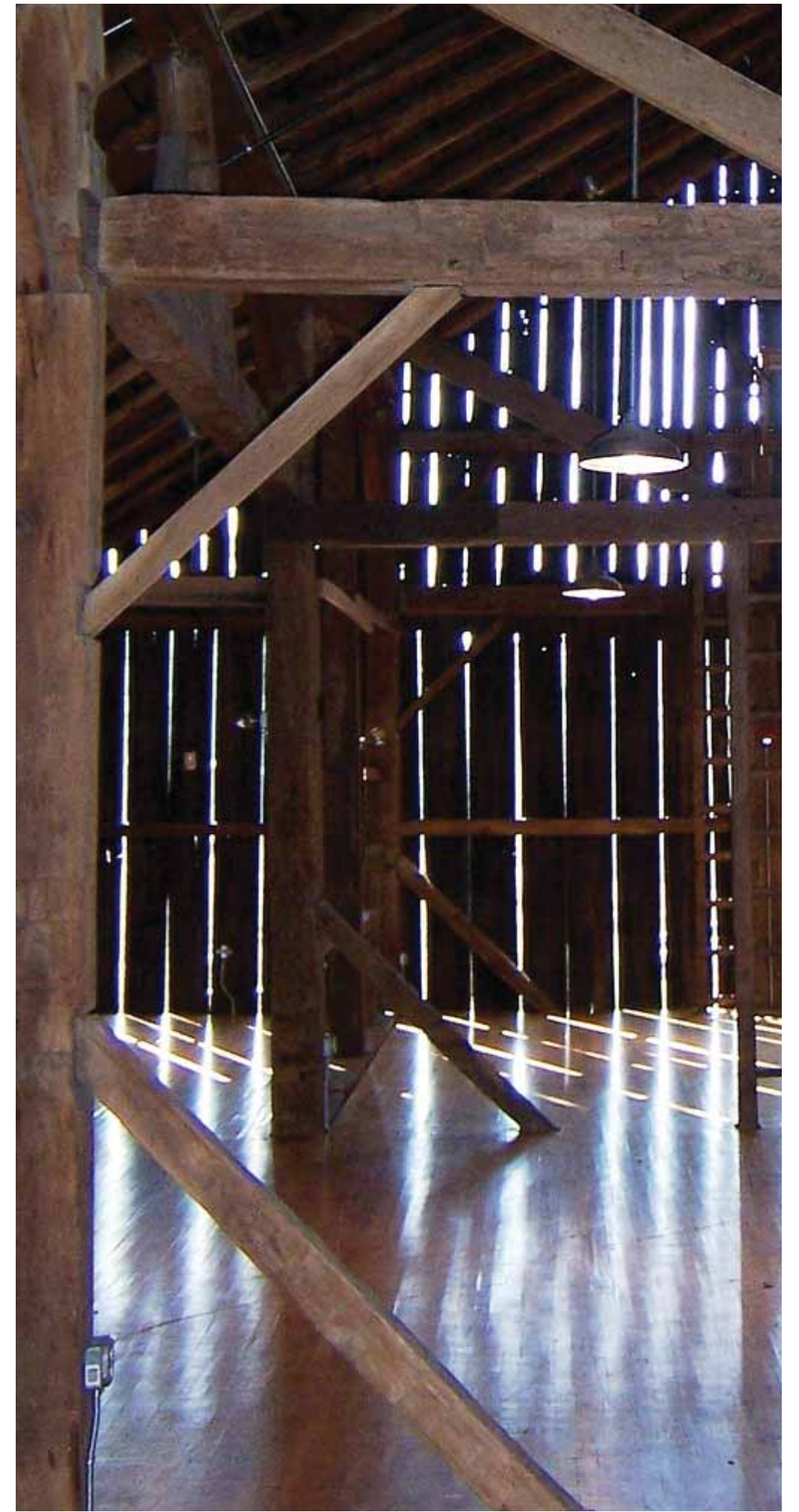


Image courtesy of PEMCO Webster & Stevens Collection, Museum of History & Industry



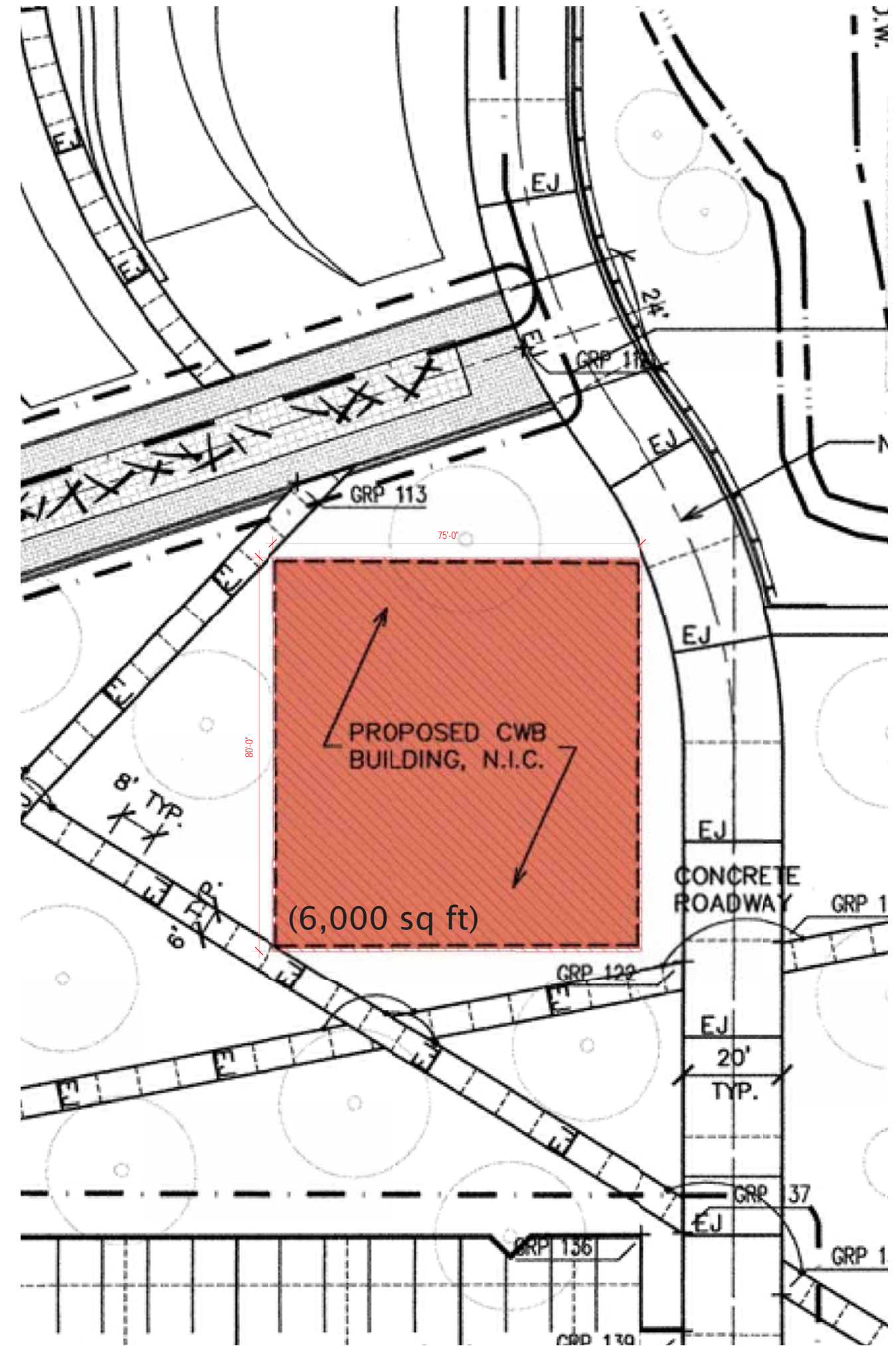
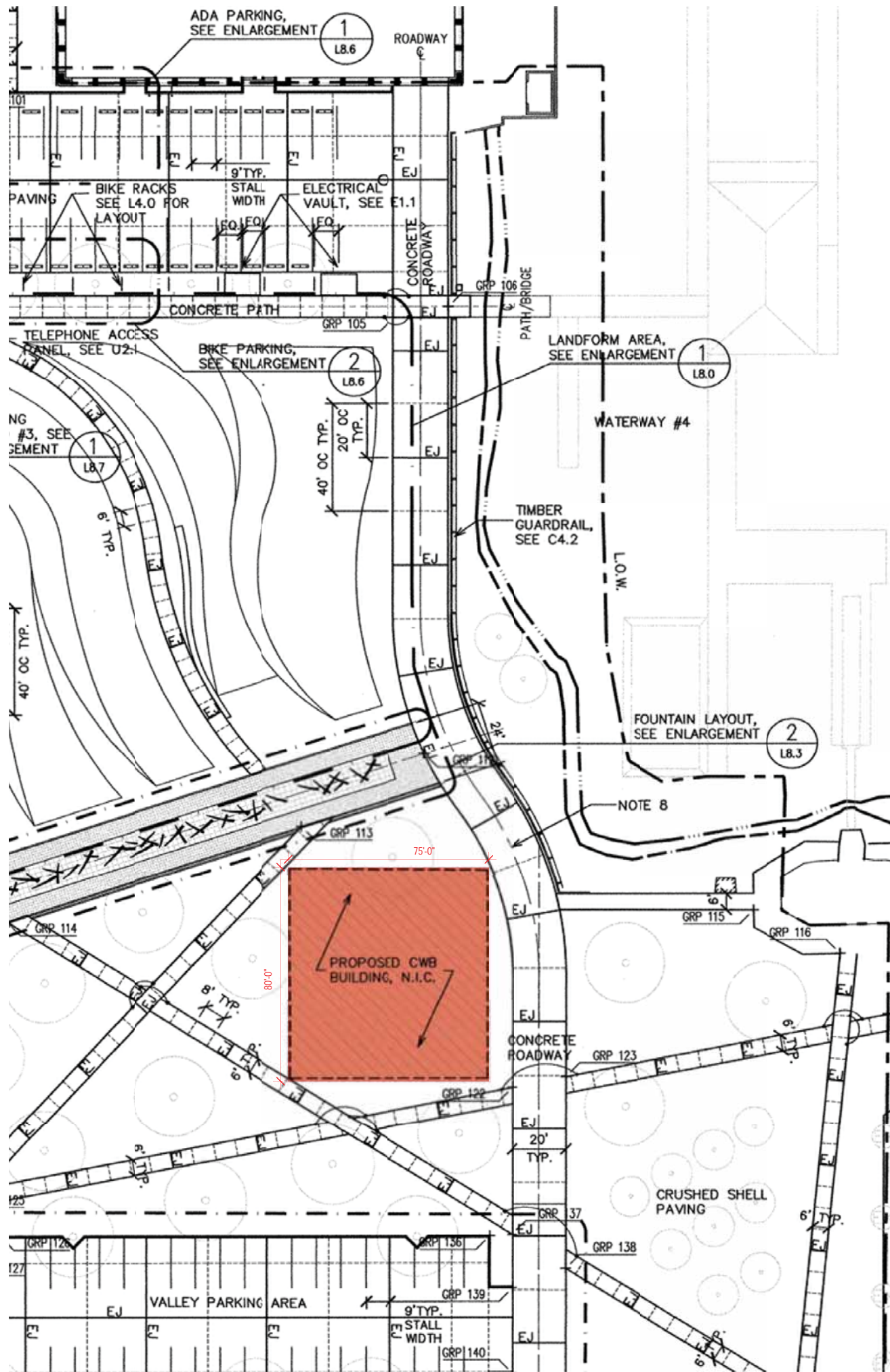
Image courtesy of PEMCO Webster & Stevens Collection, Museum of History & Industry

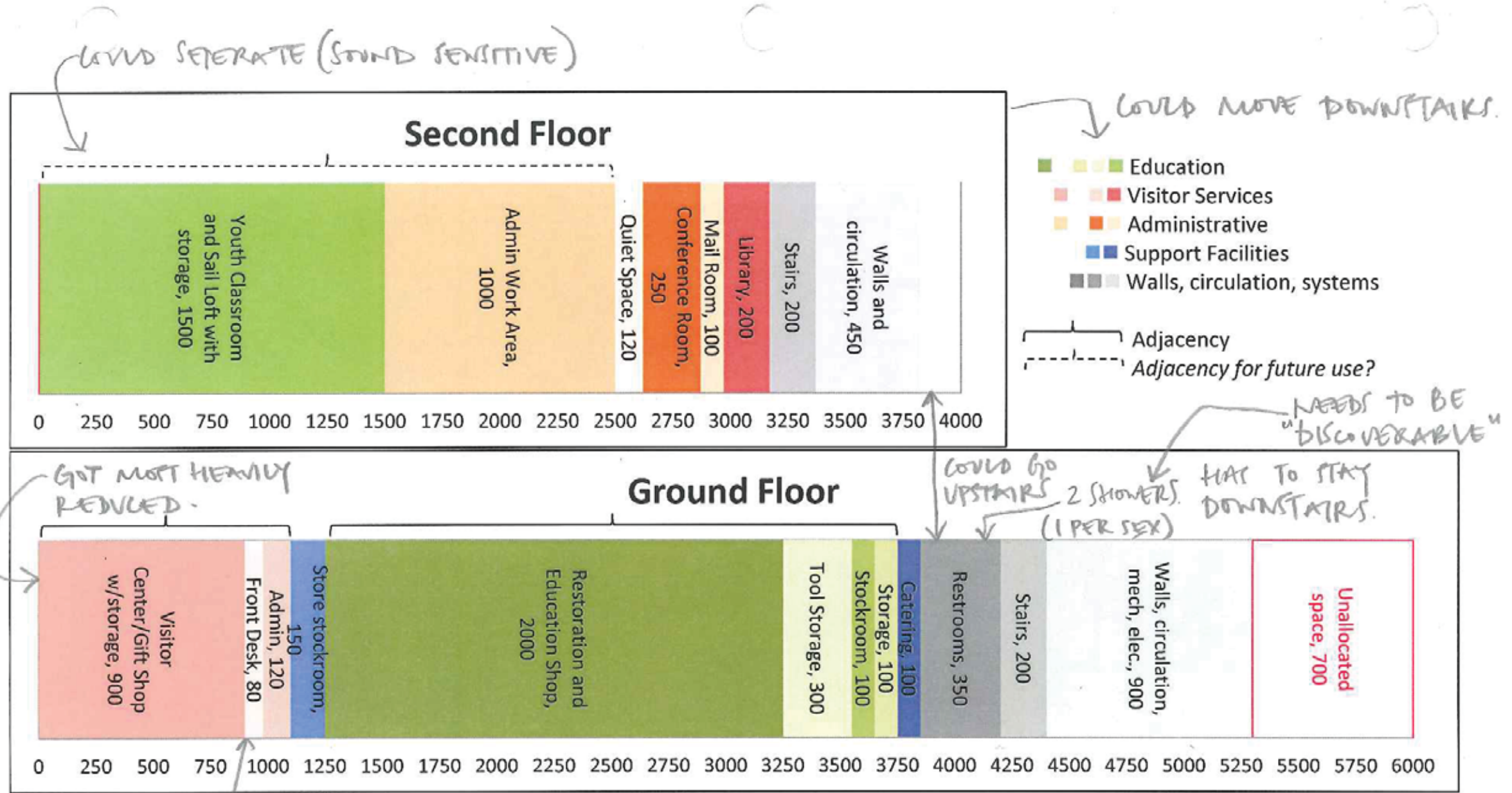












Notes:

Brackets indicate adjacency. (dashed = possible future use)

O.K.A to verify area listed is sufficient for requirements detailed below.

"Ground floor" elements required to remain on ground level. "Second floor" elements may move to ground floor.

Elevator required. Area included in circulation.

Second floor shop viewing included in circulation.

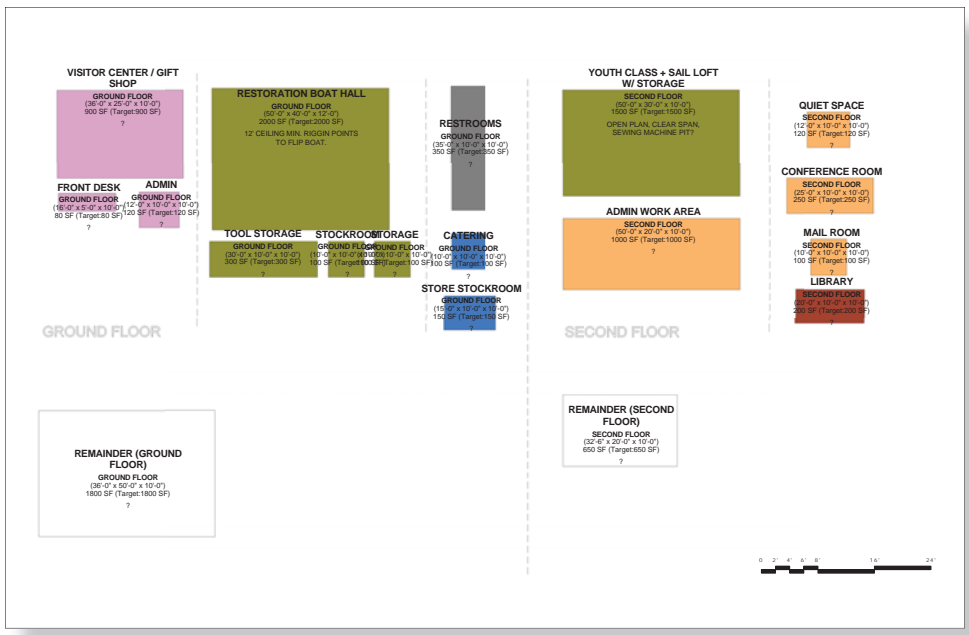
Should two unisex restrooms go upstairs reducing the area for the ground floor restrooms? One note from NWMC (Maritime Center) was the inefficiency of having to go downstairs to use a restroom.

1. RAMP

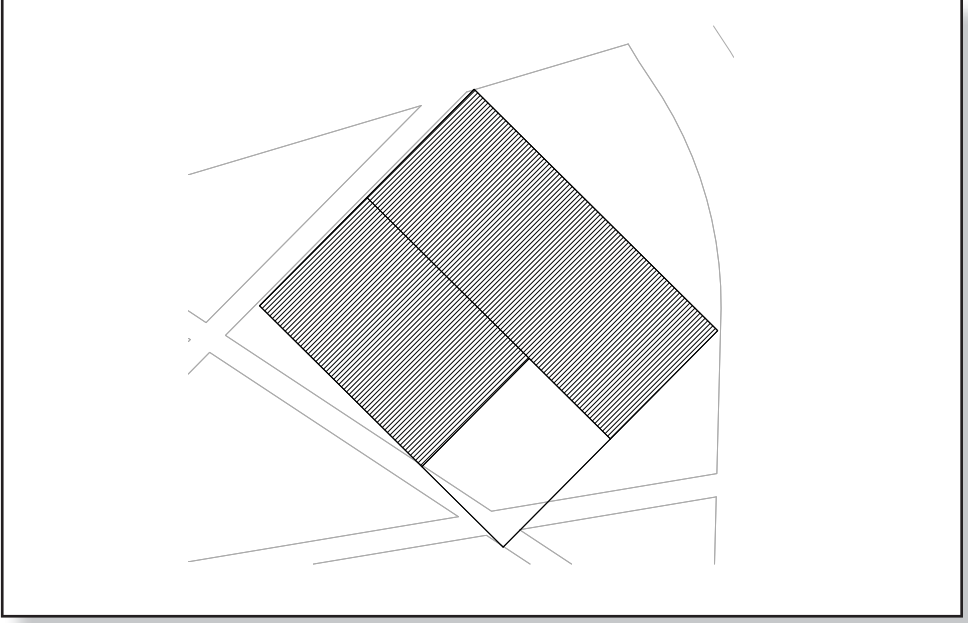
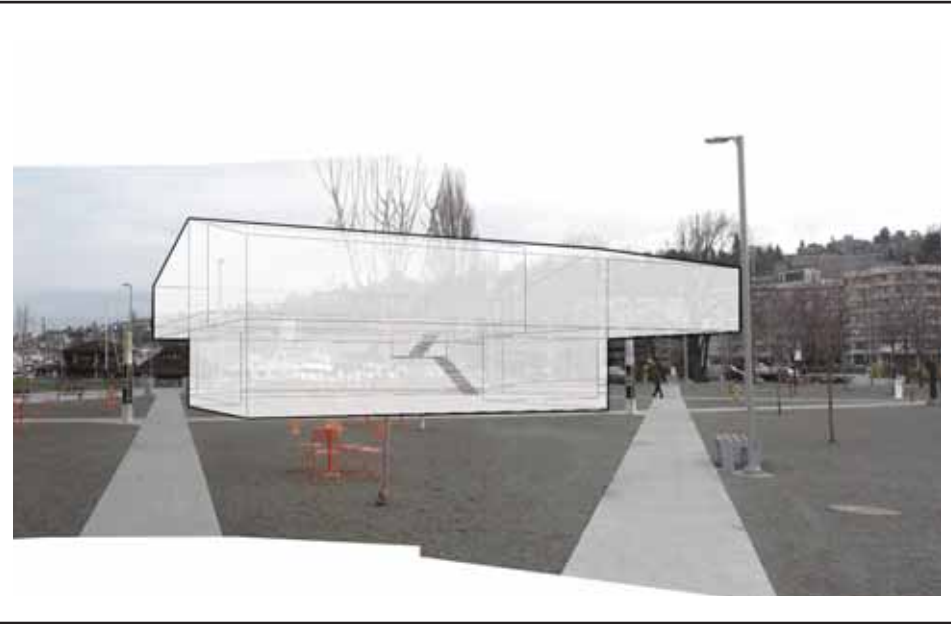
2. DOUBLE HEIGHT SPACE WITH MECHANISM THAT CAN LOWER BOATS EXHIBIT.

3. JEWEL BOX, LIT UP?

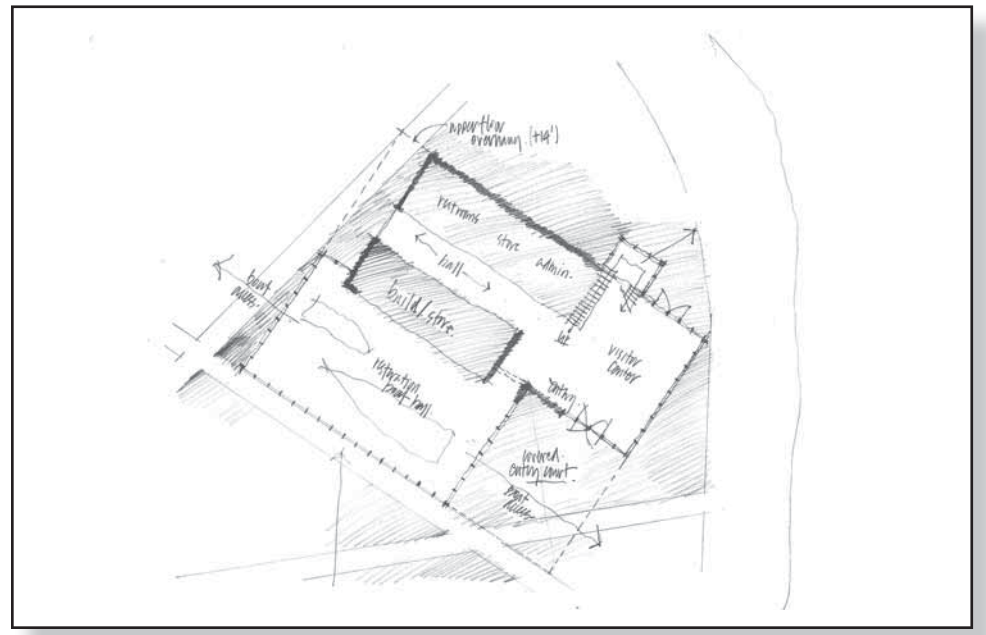
Re-test Program



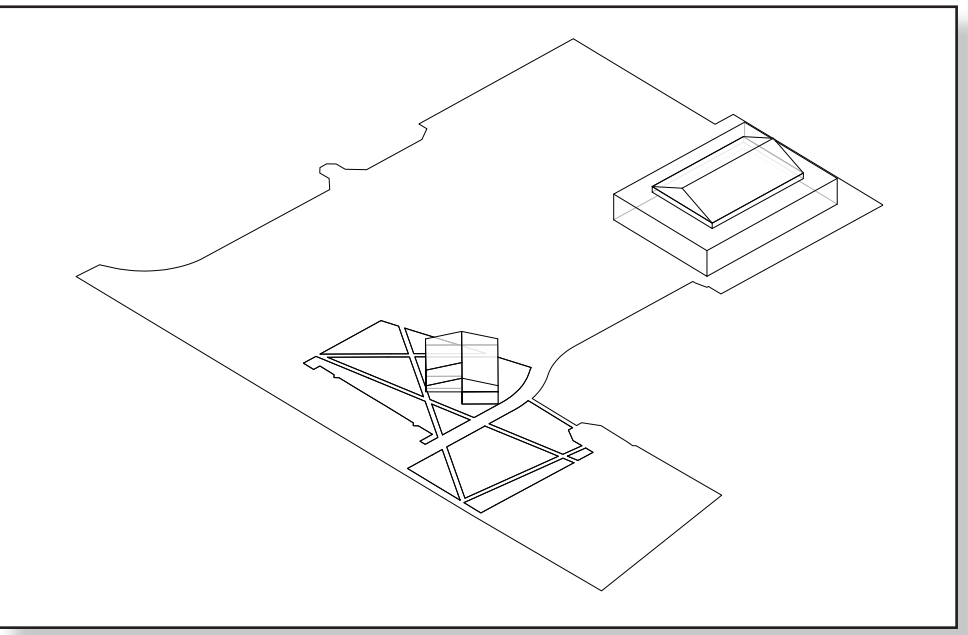
Building Footprint Iterations



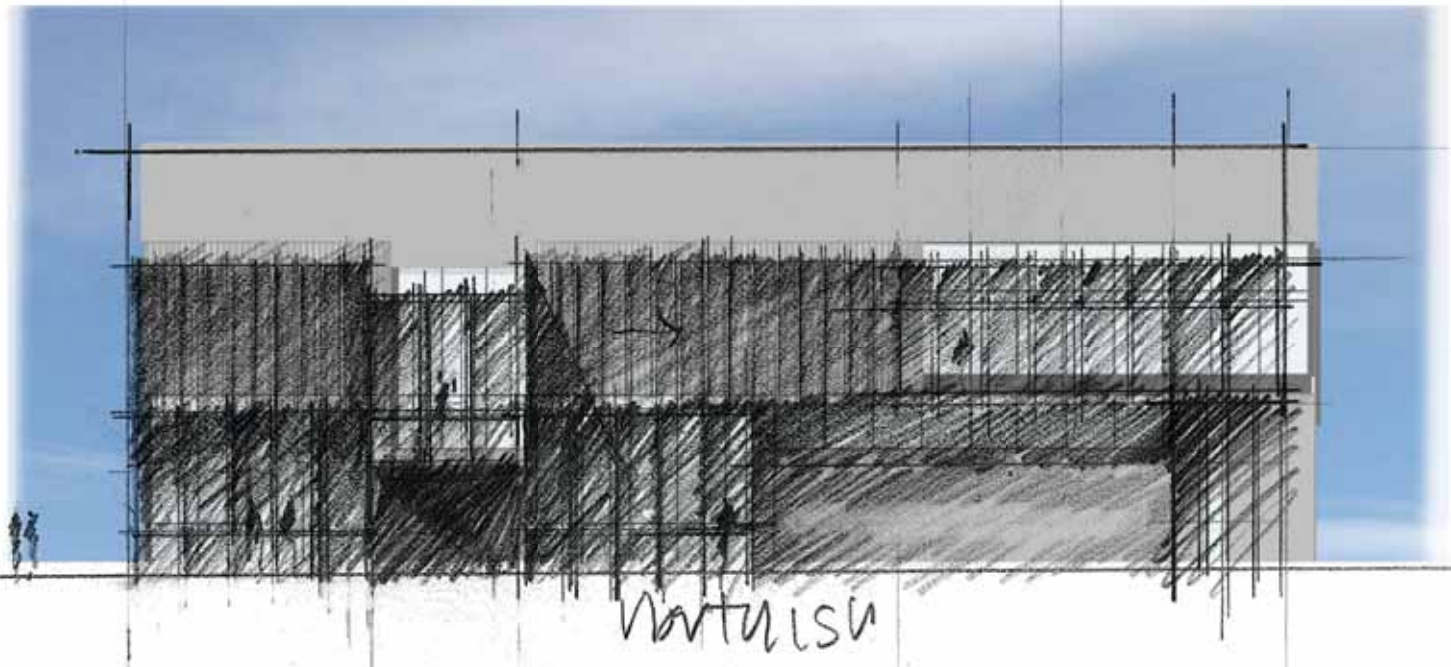
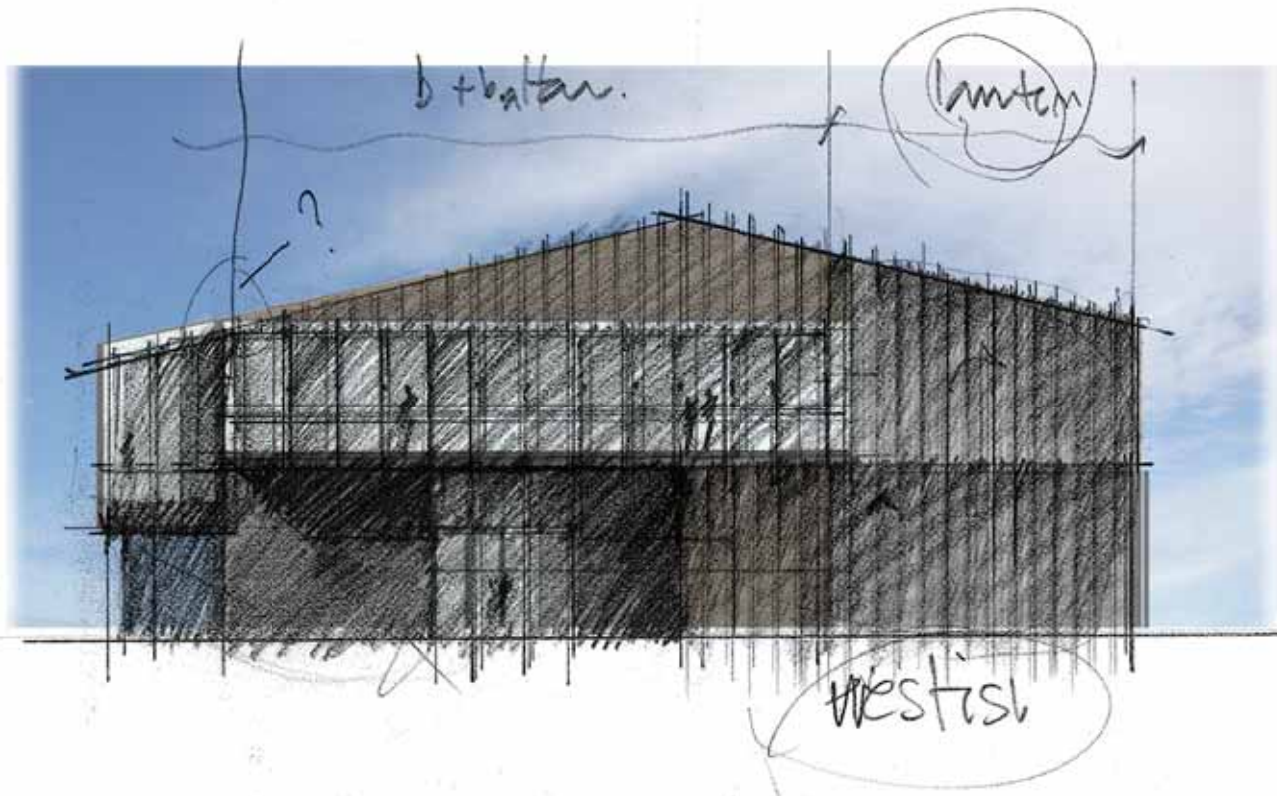
Massing and Context



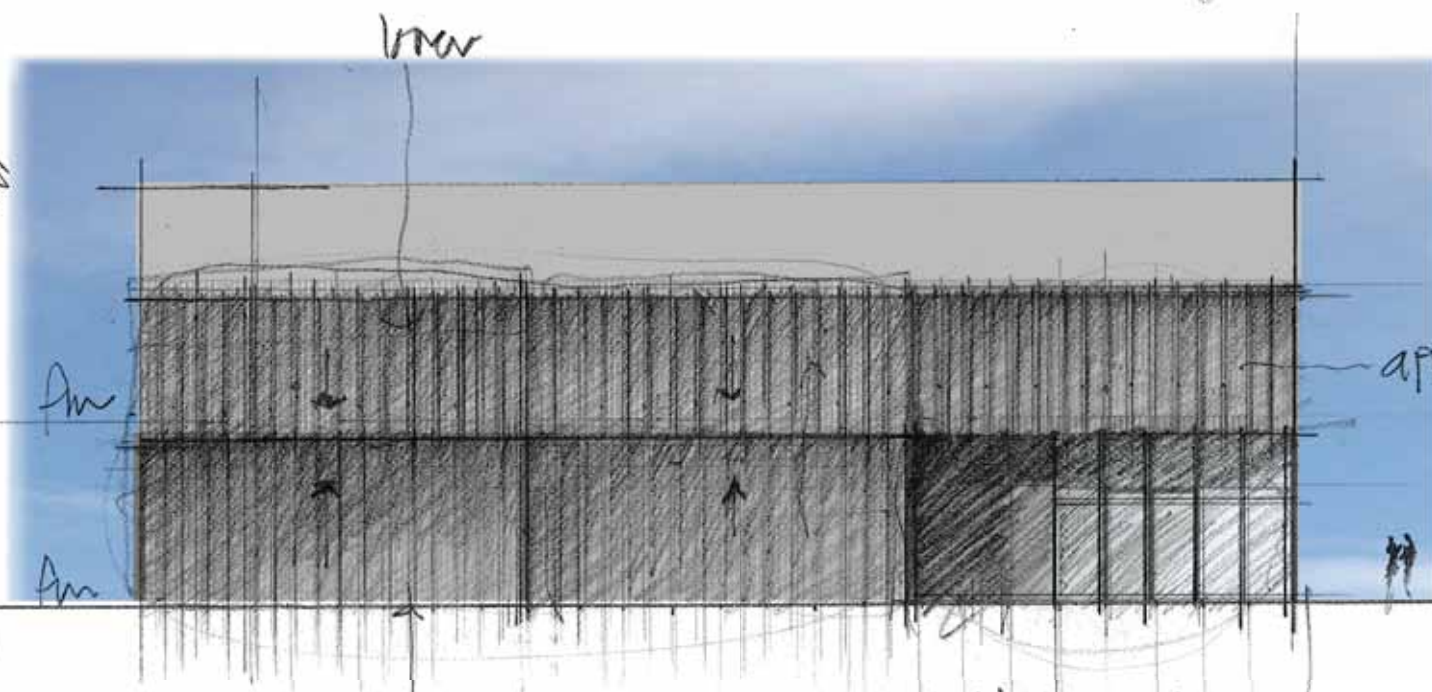
Plan Tests



Massing Iterations



Mark
 Bawn
 Well

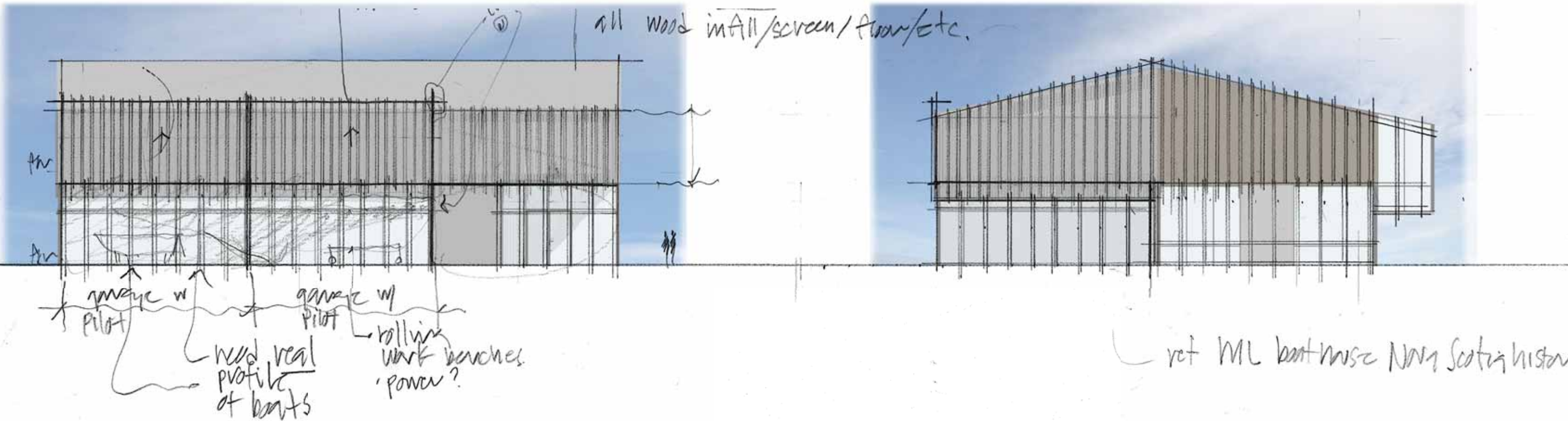
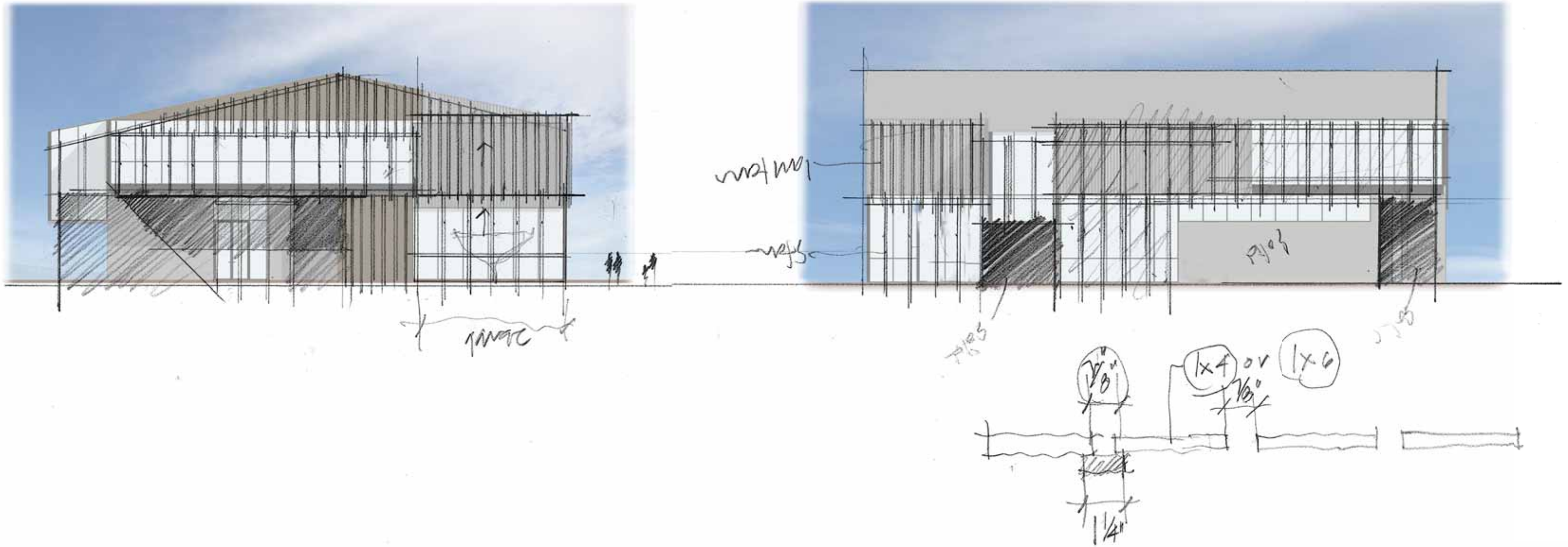


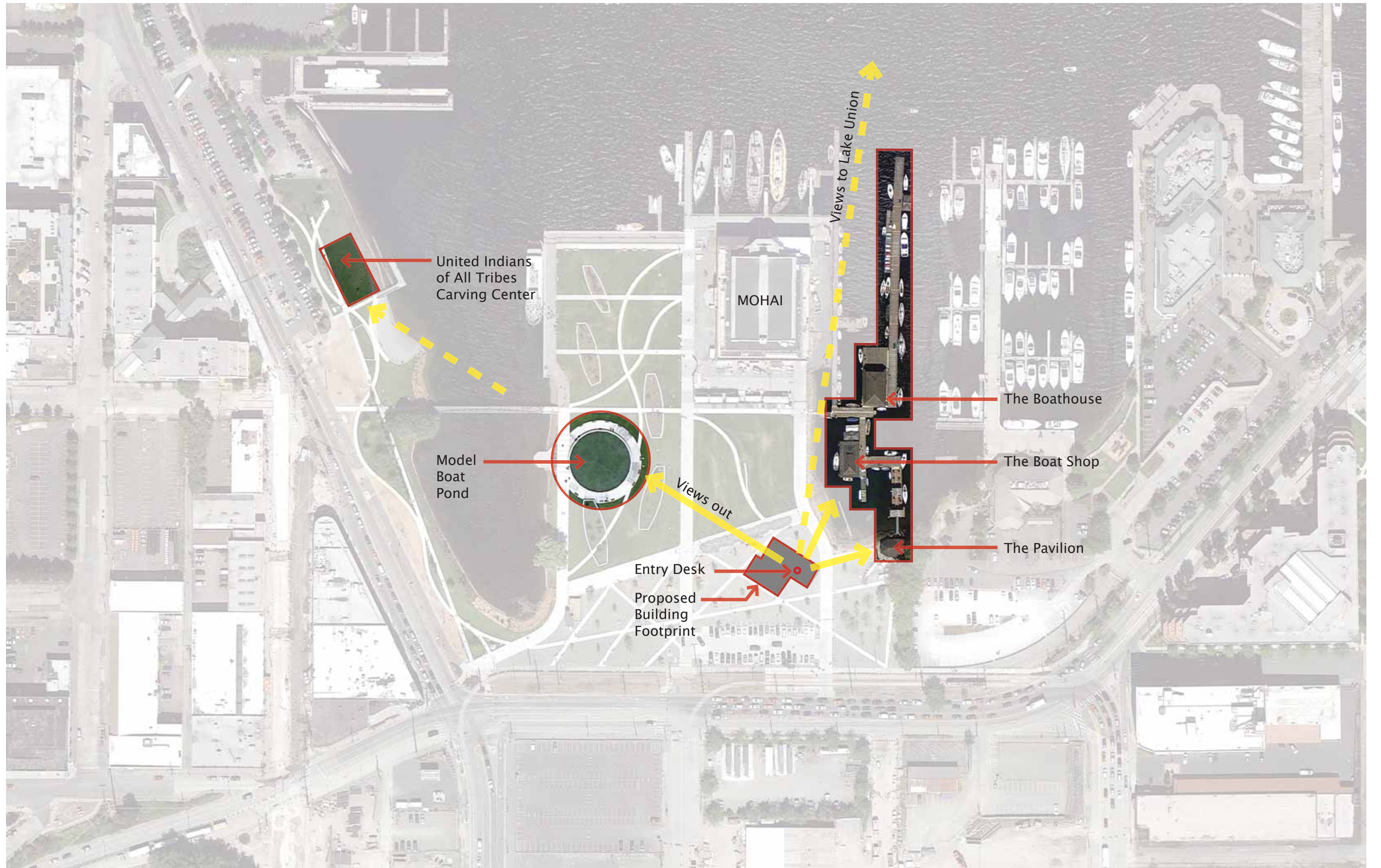
brand + battan
 with battan
 missing

approx 1x6 w/
 1" gap...

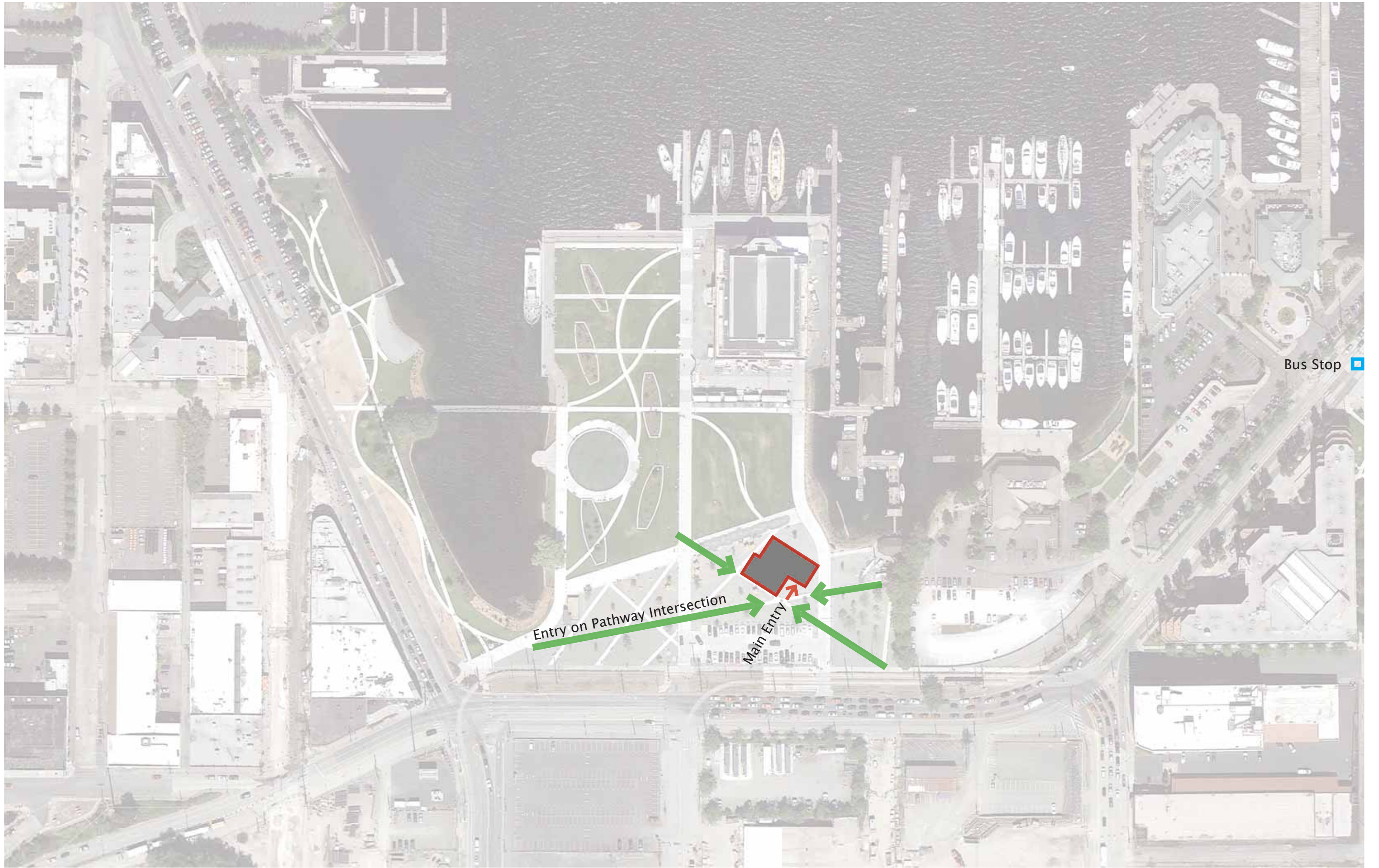


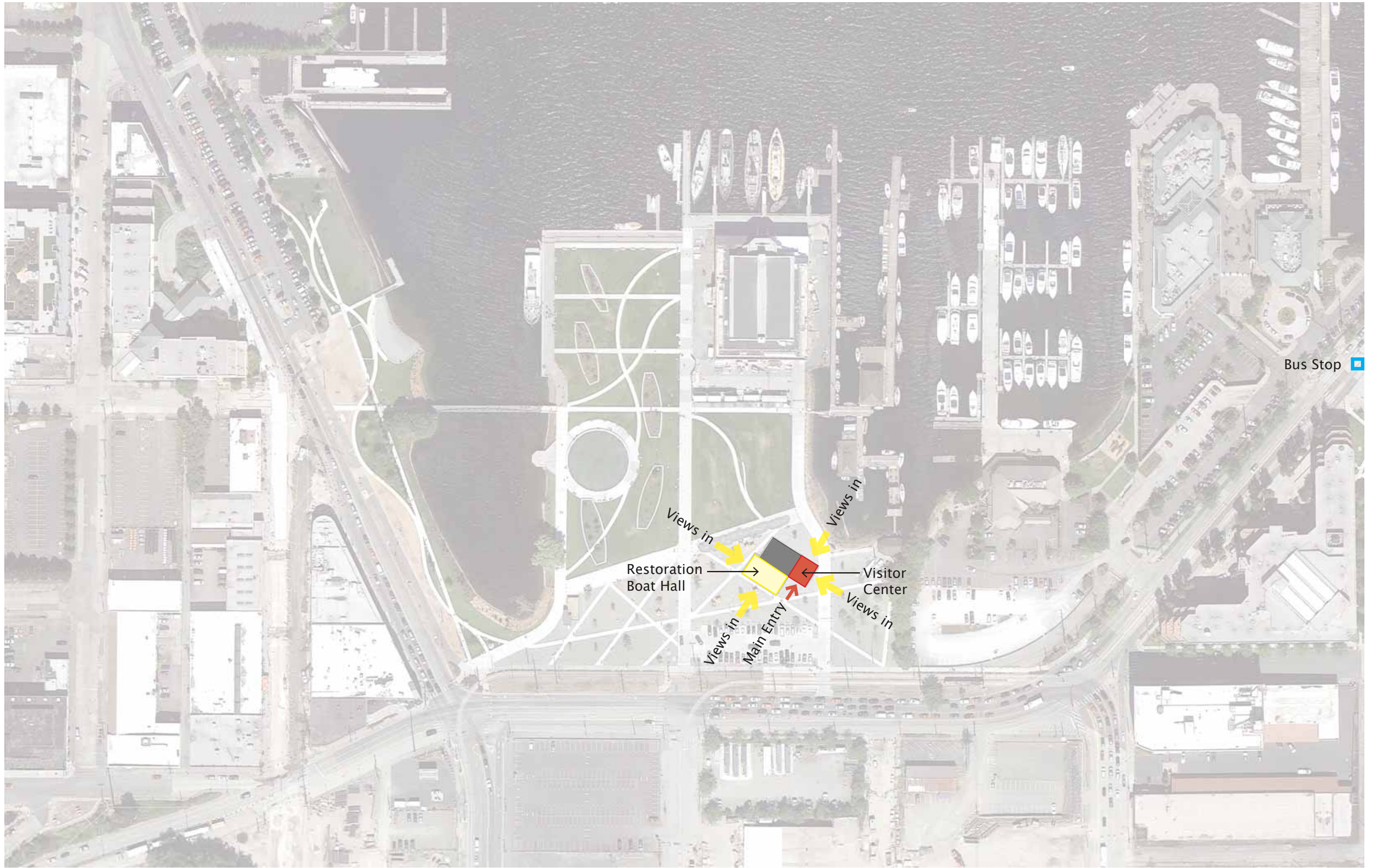
raise the hem
 solid & gksc w/
 billboard events, etc.
 southish



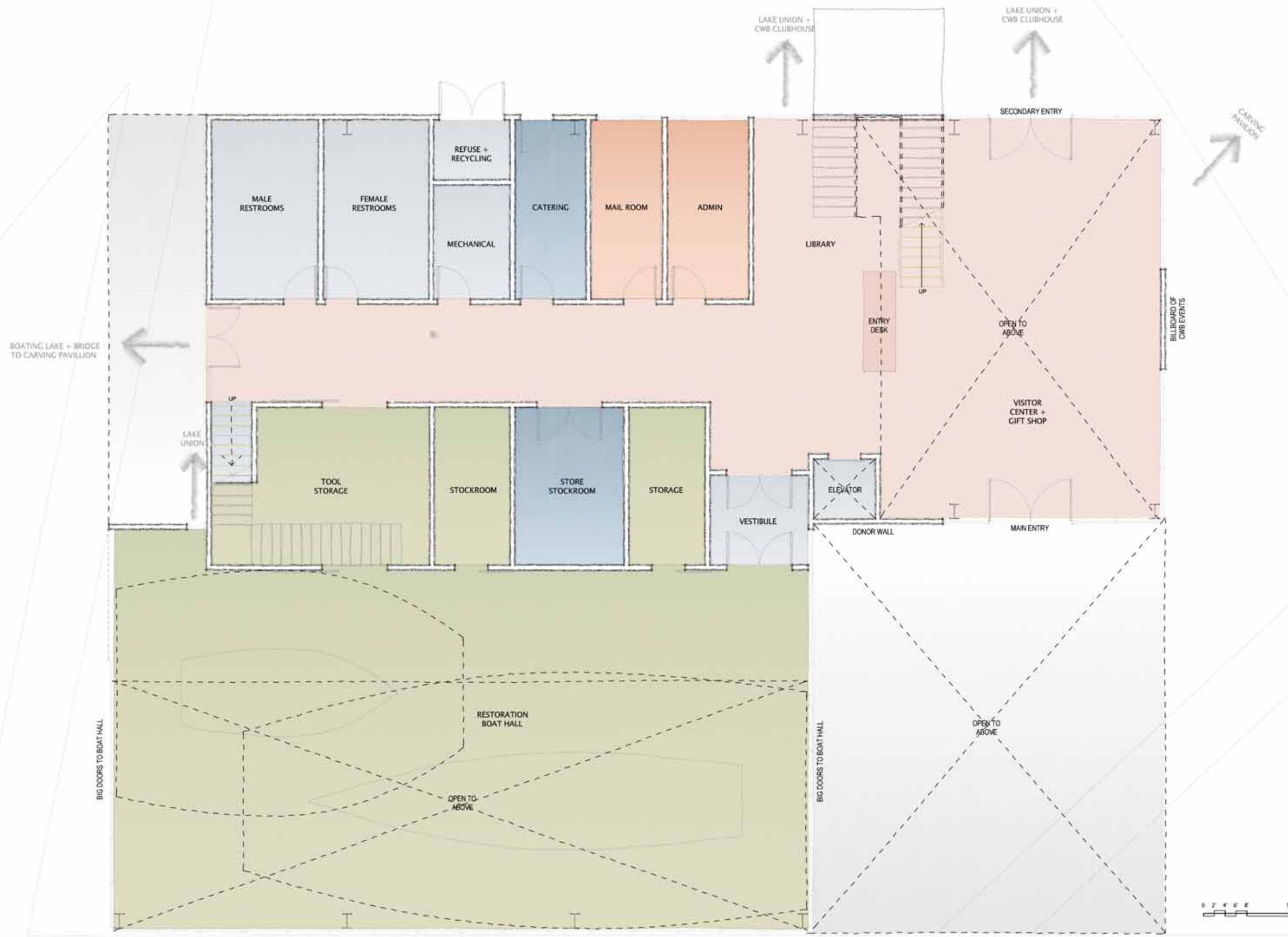








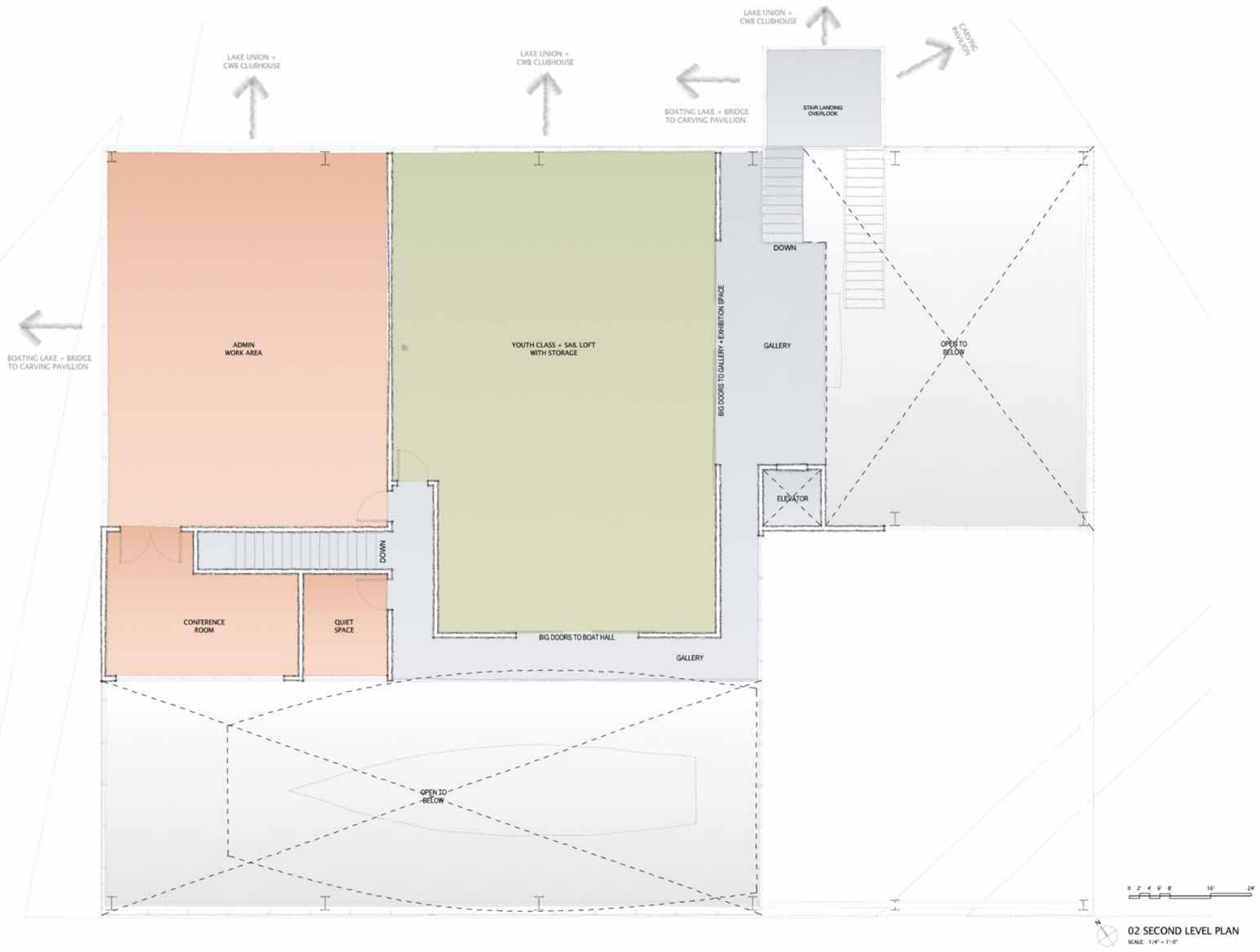




principal architect	TK
project manager	SR
drawn by	AM
checked by	
job no.	12061
date	03-19-2013
revisions:	
no.	date
	by

NOT FOR CONSTRUCTION
 DESIGN PRESENTATION
 TO CWB BOARD
 03-19-2013

CWB PHOTO: CHERIE WILSON



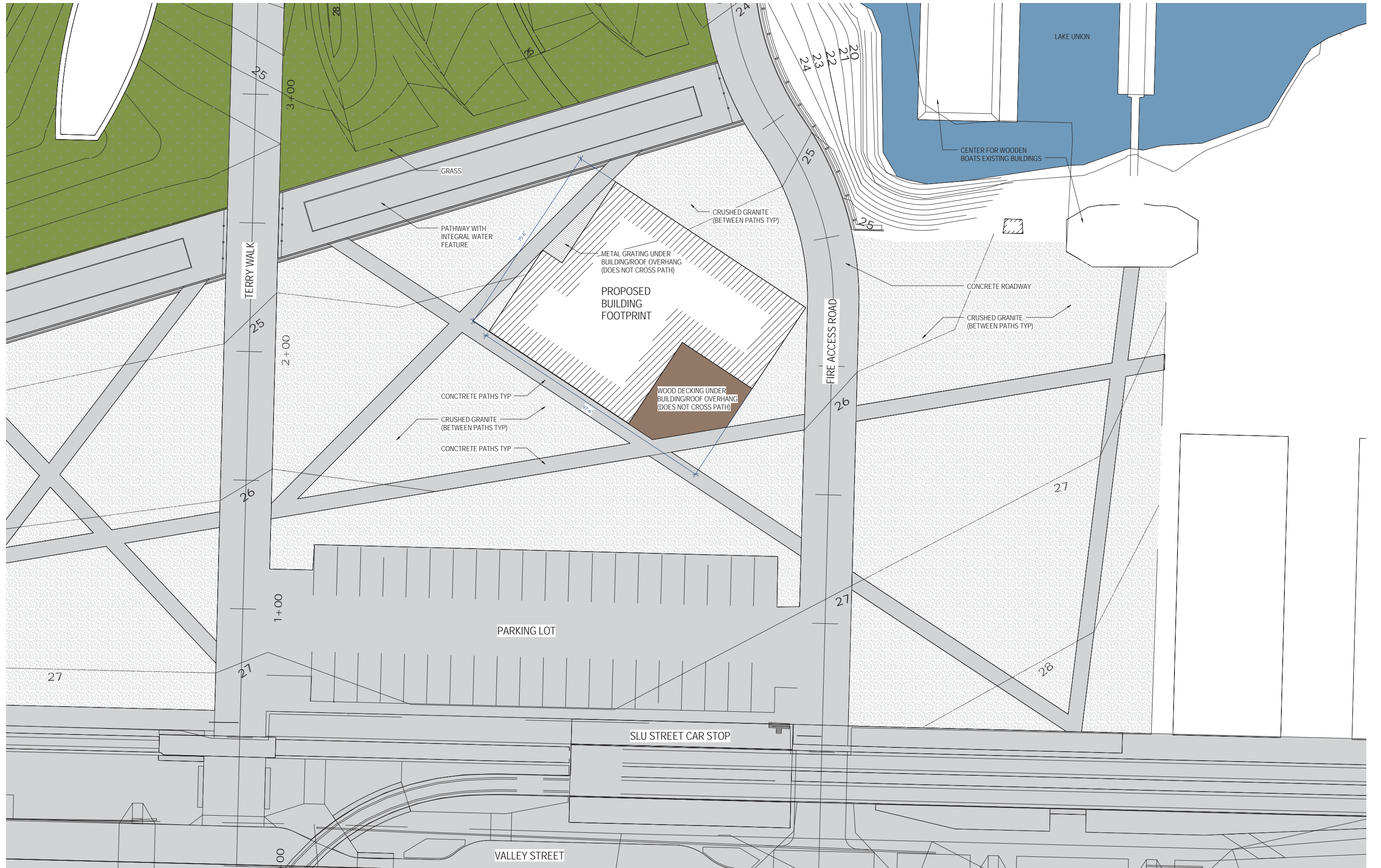
principal architect TK
 project manager SR
 drawn by AM
 checked by
 job no. 12061
 date 03-19-2013

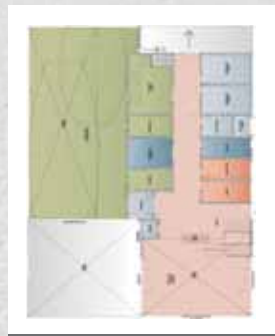
revisions

no.	date	by

NOT FOR CONSTRUCTION
 DESIGN PRESENTATION
 CWB BOARD
 03-19-2013

COURTESY: OLSON KUNDIG ARCHITECTS







Double Height
Exterior Space

Visitor Center
and Gift Shop









Sustainability strategies

- “Shorts and sweaters” approach – larger range of what is comfortable
- Passively vented – very limited conditioning for archival elements and server room
- Good natural day lighting – moderated with movable screens
- LEED Gold
- Energy modeling informing the design – Iterative process
- Low maintenance material palette – weathered wood, uncoated steel
- Large use of timber, where possible using pine beetle kill wood
- Photovoltaic ready roofing system with good solar aspect
- Water efficient fixtures
- Flexibility. Overlapping program use, minimal load bearing walls for future reconfiguration.
- Cradle to grave materials – ease of dismantling if ever required





The Wagner Education Center / Center for Wooden Boats / South Lake Union / Seattle WA / View from the Southwest at 8 am



The Wagner Education Center / Center for Wooden Boats / South Lake Union / Seattle WA / View from the Southwest at 10 am



Image courtesy of PEMCO Webster & Stevens Collection, Museum of History & Industry



The Wagner Education Center / Center for Wooden Boats / South Lake Union / Seattle WA / View from the Southwest at 12 pm



The Wagner Education Center / Center for Wooden Boats / South Lake Union / Seattle WA / View from the Southwest at 2 pm



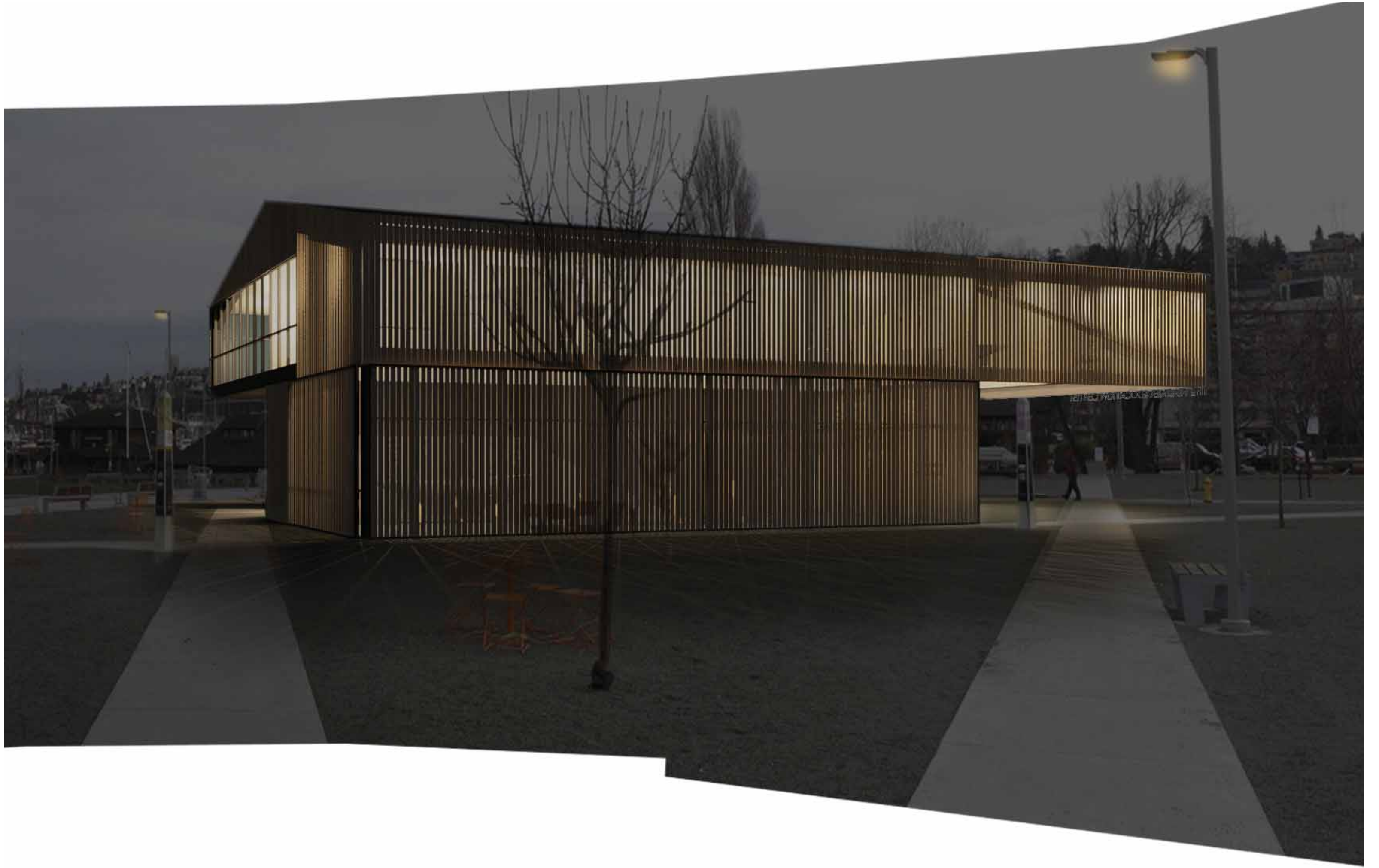
The Wagner Education Center / Center for Wooden Boats / South Lake Union / Seattle WA / View from the Southwest at 4 pm



The Wagner Education Center / Center for Wooden Boats / South Lake Union / Seattle WA / View from the Southwest at 4 pm



The Wagner Education Center / Center for Wooden Boats / South Lake Union / Seattle WA / View from the Southwest at 6 pm



The Wagner Education Center / Center for Wooden Boats / South Lake Union / Seattle WA / View from the Southwest at 8 pm



The Wagner Education Center / Center for Wooden Boats / South Lake Union / Seattle WA / View from the Southwest at 8 pm

