

King County Department of Natural Resources and Parks,
Wastewater Treatment Division

Barton Pump Station Upgrade Project
8953 Fauntleroy Way SW

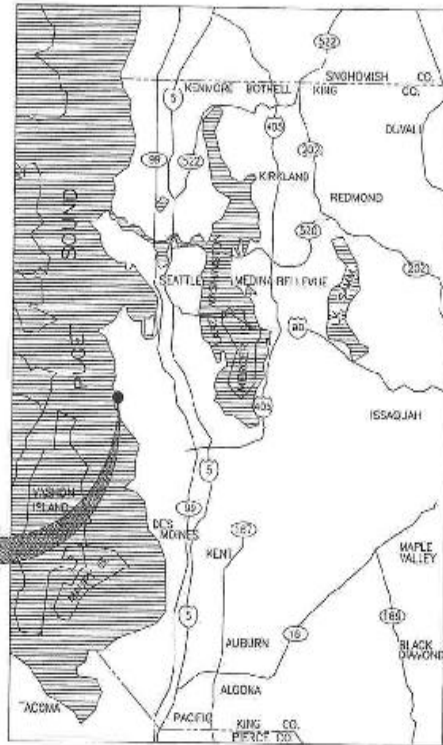
BACKGROUND & PURPOSE

Barton Pump Station Upgrade Project

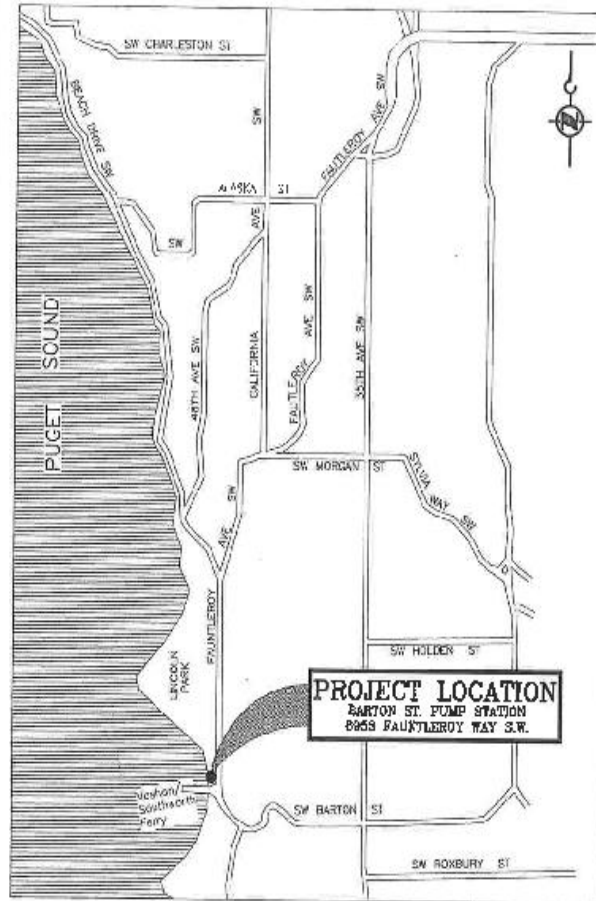
- The station is more than 50 years old, replacement parts are difficult to locate, it is difficult to maintain and there is a major risk of equipment failure.
- Washington State Dept. of Ecology requires no more than one discharge of untreated sewage per CSO outfall per year on average to comply with Clean Water Act mandates.
- Barton Pump Station experienced four overflow events in 2010.

Improvements will include:

- Back-up generator in the event of a power failure (required by Department of Ecology)
- Greater pumping capacity (from 26 mgd to 33 mgd) will reduce overflows;
- New odor control system to reduce wastewater-related odor;
- A complete upgrade of mechanical, electrical and HVAC systems, plus safety improvements to the station



PROJECT LOCATION



LOCATION MAP
50' TO SCALE

LEGAL DESCRIPTION FOR 8923 FAUNTLEROY WAY S.W.:
 S 35 FT OF N 500 FT OF CL 2 W OF FAUNTLEROY AVE & 240 CL TO LOS ALI 100 PGR BLK 498 SEATTLE TOL LDE EXT #1 RTWN LMS 465 FT & 500 F S & PLW N UN ED BLK

SECTION AND DETAIL NUMBERING SYSTEM

- (1) SECTION LETTER ON DRAWING NOTES
- (2) SEE DRAWING 43400 THE LOCATION IDENTIFIED
- SECTION LETTER
- ELEVATION LETTER
- DRAWING ON WHICH SECTION/LOCATION APPLIES - INDICATES THE DRAWING IS ON THE SW - SHEET.
- DRAWING ON WHICH SECTION WAS TAKEN - INDICATES THE DRAWING IS TAKEN FROM THE SW - SHEET
- NOTES
- SCALE: 1/2" = 1' - 00/03
- DRAWING IS REFERENCED IN A SIMILAR MANNER, EXCEPT THAT DETAILS ARE IDENTIFIED BY NUMERICAL LETTERS.

No.	REVISION	BY	APP'D	DATE

**90%
REVIEW SET
FOR INFORMATION ONLY**

DESIGNED BY: T. BROWN	DATE: 3/14/09
DRAWN BY: A. OLBROCK	SCALE: AS SHOWN
CHECKED BY: J. BROWN	ONE INCH = FIFTY FEET
PROJECT APPROVED BY: E. GASKILL	CONTRACT NO. C001122-1



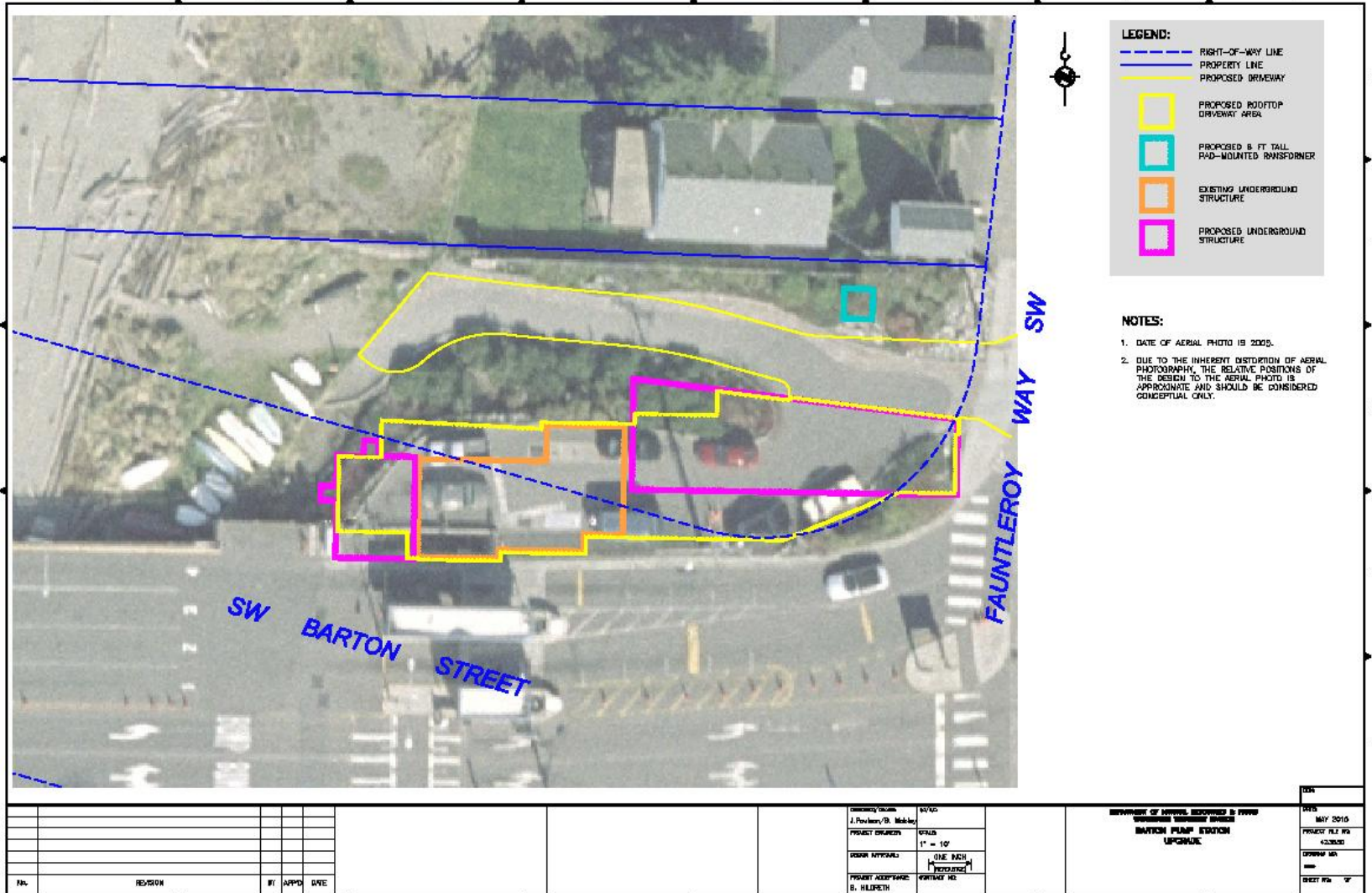
DEPARTMENT OF NATURAL RESOURCES & PARKS
 WATERSHED RESTORATION DIVISION
BARTON PUMP STATION UPGRADE

VICINITY & LOCATION MAPS

DATE: MARCH 2011
 PROJECT FILE NO.: 422833
 DRAWING NO.: **G101**
 SHEET NO. OF

A:\projects\422833\Drawings\PG_Maps\G101_VICINITY_MAP.dwg | Layer: Legend
 PLOT DATE: 3/23/11 9:20:10 AM
 PLOT SCALE: 1/2" = 1' - 00/03
 PLOT SIZE: 11.00 x 17.00

Barton Pump Station: Existing & Proposed Footprint



Design Commission Workshop 7/14/2011

Recommendations/General Concepts

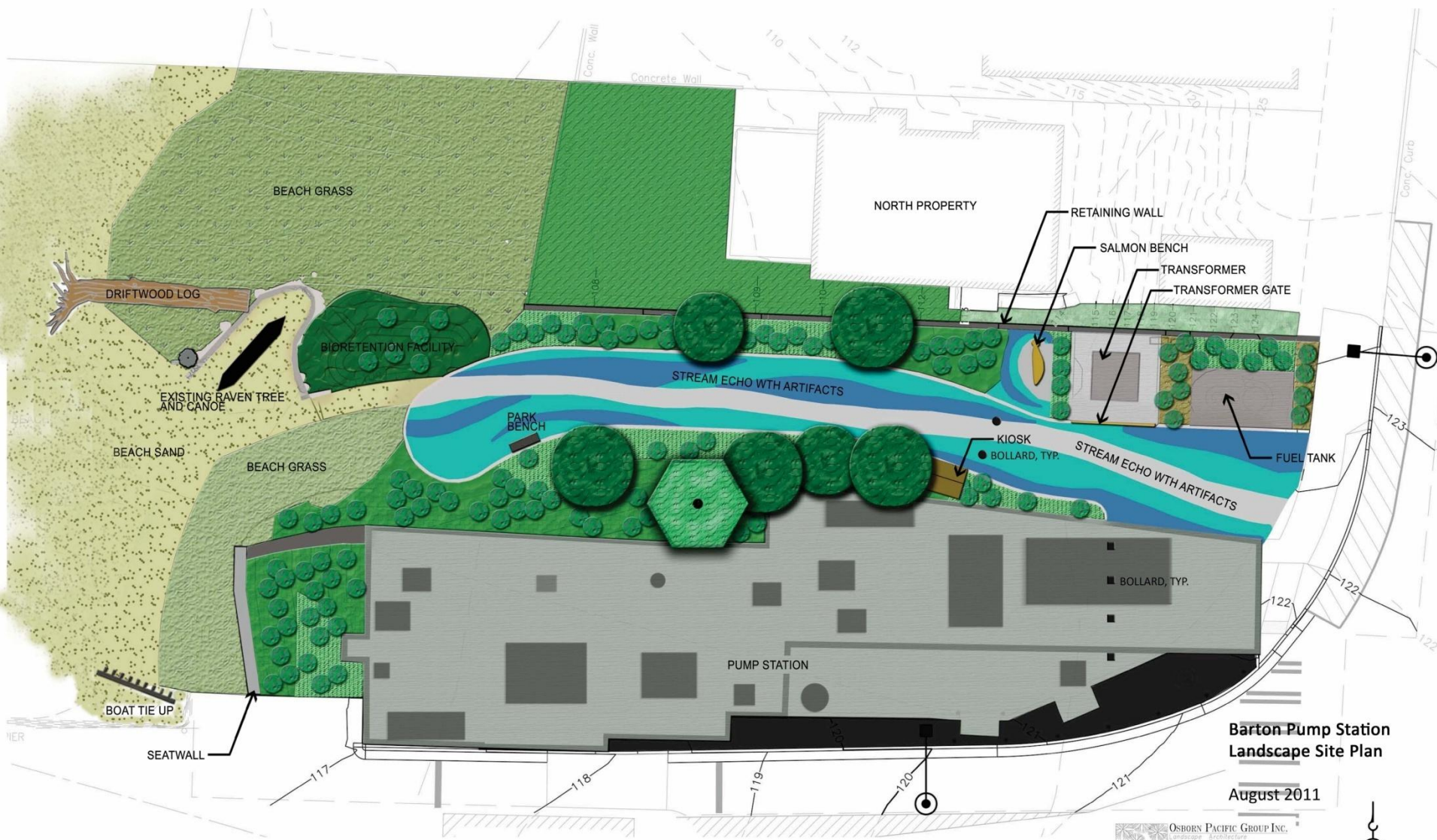
- *Integrate artwork and tie together elements of the design*

Examples:

- Extend stream echo artwork to full width and length of driveway;
- Fluid transition of stream echo into beach ;
- If possible, narrow driveway visually and use plantings to creep over edges;
- Re-examine fencing/railings to make them light, transparent, and simple;

SDC recommendations, cont.

- Move salmon home run from north fence to landscaped areas in front of the retaining wall
- Address the transition from the stream echo trail to the turn around/station roof
- Install bollards on roof of station to prevent vehicle access
- Improve integration of artwork within the site



**Barton Pump Station
Landscape Site Plan**

August 2011

OSBORN PACIFIC GROUP INC.
 Landscape Architecture
 Recreation Planning
 Environmental Compliance
 2125 Western Avenue, Suite 502
 Seattle, Washington 98121
 206-284-8865 | opp@osbornpacific.com



HIGHER HIGH WATER
V = 105.46

SMALLER GRANITE BOULDERS
AND DRIFTWOOD LOGS PLACED
AS RANDOM EDGING.

SEE DETAIL (G) FOR
CANOE DISPLAY AREA.

APPROXIMATE LOG LOCATION
TO BE DETERMINED BY THE
PROJECT LANDSCAPE
ARCHITECT.

REINSTALL CONCRETE
RAVEN TREE AT THIS
APPROXIMATE LOCATION

MOVE CONCRETE CANOE
TO THIS APPROXIMATE
LOCATION

MOVE ART
ROCKS HERE

MOVE GRANITE ROCKS TO
OUTCROP AREA

MOVE GRANITE ROCKS TO
OUTCROP AREA

ROCK ART ITEMS TO BE REINSTALLED:

- (1A) COVE PARK ROCK SIGN
- (1B) ROCK WITH WORDS
- (1C) ROCK WITH ENGRAVED SHIP (FAUNTLEROY 1857)
- (1D) ART ROCK
- (1E) ROCK WITH CRAB ART

ART ITEMS TO BE REINSTALLED:

- (1F) CONCRETE CANOE
- (1G) SALMON BENCH
- (1H) DRIFTWOOD LOG

NEW ART ITEMS TO BE INSTALLED:

- (2A) TRANSFORMER GATE
- (2B) SALMON BENCH
- (2C) SALMON HOME RUN
- (2D) BOAT TIE UP SCULPTURE
- (2E) STREAM ECHO WITH STREAM ARTIFACTS



COVE PARK ROCK SIGN



EXISTING STREAM ECHO



EXISTING STREAM ECHO ART ARTIFACTS



CONCRETE CANOE



CONCRETE RAVEN TREE



EXAMPLE OF ROCK ART ITEM TO BE REINSTALLED (FAUNTLEROY 1857)



CONCRETE RAVEN TREE

- GENERAL NOTES**
- SEE SHEET L003 FOR LANDSCAPE SITE FURNISHING & DETAILS
 - SEE SHEET L101 FOR LANDSCAPE DEMOLITION AND ARTWORK SALVAGE PLAN
 - SEE SHEET L102 FOR LANDSCAPE PLANTING PLAN.
 - REFER TO STRUCTURAL DRAWINGS FOR FURTHER NOTES REGARDING TRANSFORMER GATE, SALMON BENCH, SALMON HOME RUN AND BOAT TIE UP SCULPTURE ARTWORK AND INSTALLATION.
 - CONTRACTOR WILL NOTIFY PROJECT REPRESENTATIVE WHEN READY TO INSTALL STREAM ARTIFACTS NO LESS THAN 48 HOURS IN ADVANCE. PROJECT REPRESENTATIVE WILL SUPERVISE INSTALLATION OF STREAM ARTIFACTS IN STREAM ECHO.
 - STOCKPILED EXISTING LOG IN ART STORAGE AREA. REPLACE LOG AFTER ALL EARTHWORK AND MACHINE ACCESS IS COMPLETED AND PRIOR TO BEACH GRASS INSTALLATION. LOG LOCATION TO BE DETERMINED BY LANDSCAPE ARCHITECT.



Call 2 Working Days Before You DIG!

1-800-424-5555



N:\Active Projects\2009\09020200 Barton Pump Station\CAD Documents\A\Drawn\L104.dwg | Layout: L104_PAC
 PLOTTED: Jul 26, 2011 - 04:08:39pm By: Brandon
 IMAGE: 100_A82021992_2009-09-28 Barton art 026.jpg | 2009-09-28 Barton art 026.jpg | 2009-09-28 Barton art 026.jpg
 IMAGE: 100_A82021992_2009-09-28 Barton art 026.jpg | 2009-09-28 Barton art 026.jpg | 2009-09-28 Barton art 026.jpg

OSBORN PACIFIC GROUP INC.
 Landscape Architecture
 Recreation Planning
 Environmental Compliance
 2125 Western Avenue, Suite 502
 Seattle, Washington 98121
 206-256-8985 | opp@osbornpacific.com

NOT FOR CONSTRUCTION

AUGUST 2011
 DESIGN REVIEW

DESIGNED/DRAWN:
S. BERTHOLD
L. OSBORN
PROJECT ENGINEER:
K. HACKLER
DESIGN APPROVAL:
PROJECT ACCEPTANCE:
E. GASKILL

QA/QC:
L. OSBORN
SCALE:
1" = 10'
ONE INCH
(REFERENCE)
CONTRACT NO:
C0612C11



DEPARTMENT OF NATURAL RESOURCES & PARKS
 WASTEWATER TREATMENT DIVISION
 BARTON PUMP STATION
 UPGRADE
**SITE FURNISHINGS, ART
 RESTORATION & INSTALLATION PLAN**

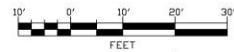
DATE:
MAY 2011
PROJECT FILE NO:
423630
DRAWING NO:
L104
SHEET NO. OF



GENERAL NOTES

1. SEE SHEET L001 FOR PLANTING DETAILS
2. SEE SHEET L003 FOR SITE FURNISHINGS & DETAILS
3. SEE SHEET L104 FOR SITE FURNISHINGS, ART RESTORATION & INSTALLATION PLAN.
4. SEE SHEET L105 FOR PLANT SCHEDULE
5. PLANT ONLY NATIVE PLANTS WEST OF 200' MHHW LIMIT
6. DO NOT PLACE ANY LANDSCAPING OVER 24" BY-PASS CONNECTION AND 24" GATE VALVES PER SHEET M125.

GROUND COVER TABLE	
	GRASS SEED SEE L105
	KINNIKINNICK SEE L105
	SALAL SEE L105
	COASTAL STRAWBERRY SEE L105
	DUNEGRASS SEE L105
	SAND



Call 2 Working Days Before You Dig!

 1-800-424-5555

DATE: MAY 2011
 PROJECT FILE NO: 423630
 DRAWING NO: L102
 SHEET NO: 07

DEPARTMENT OF NATURAL RESOURCES & PARKS
 WASTEWATER TREATMENT DIVISION

BARTON PUMP STATION
 UPGRADE

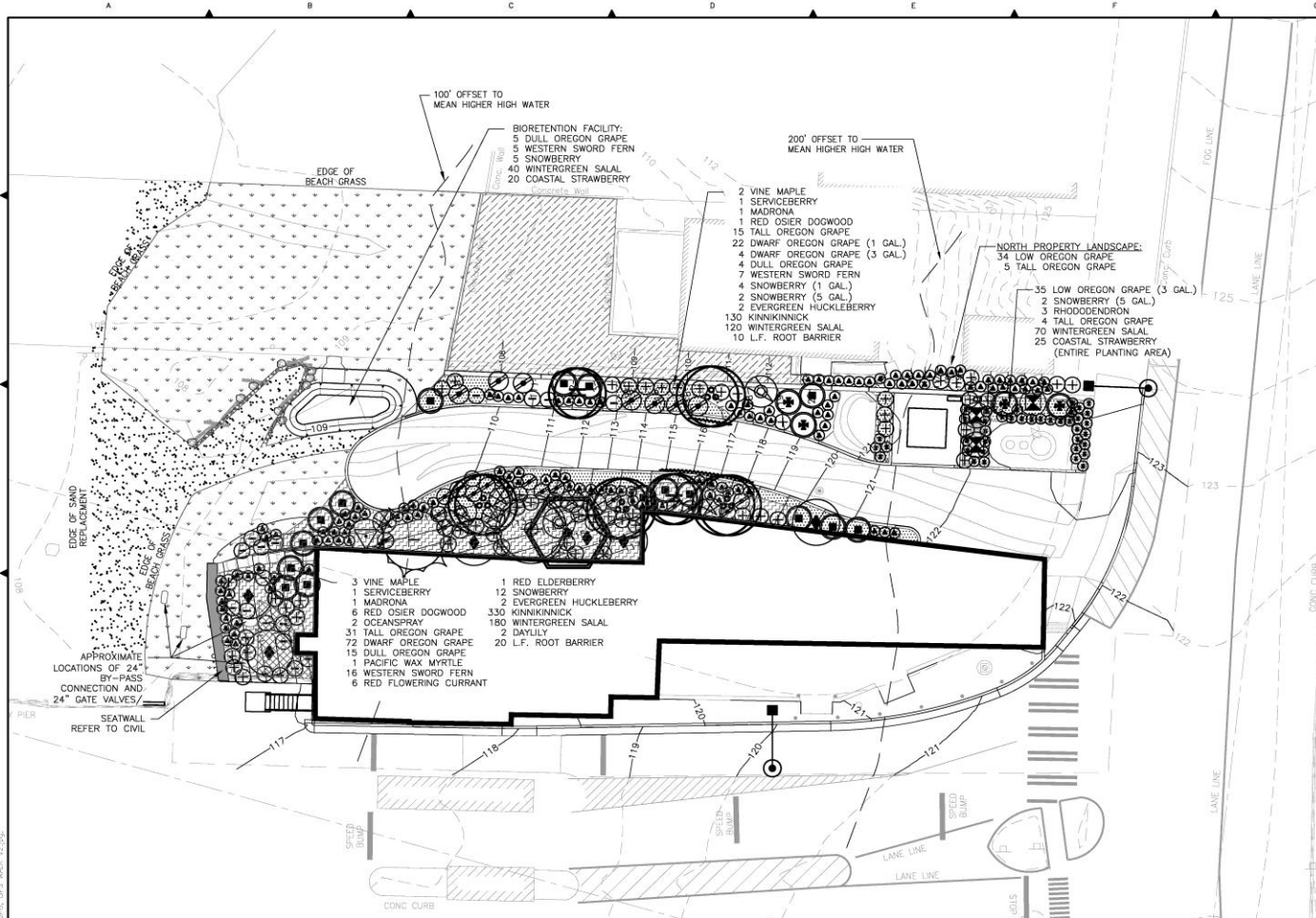
PLANTING PLAN

DESIGNED/DRAWN: B. BERTHOLD
 PROJECT ENGINEER: K. HACKLER
 DESIGN APPROVAL: [Signature]
 PROJECT ACCEPTANCE: E. GASKILL

DATE: L. OSBORN
 SCALE: 1" = 10'
 ONE INCH (REFERENCED)
 CONTRACT NO: C00612C11



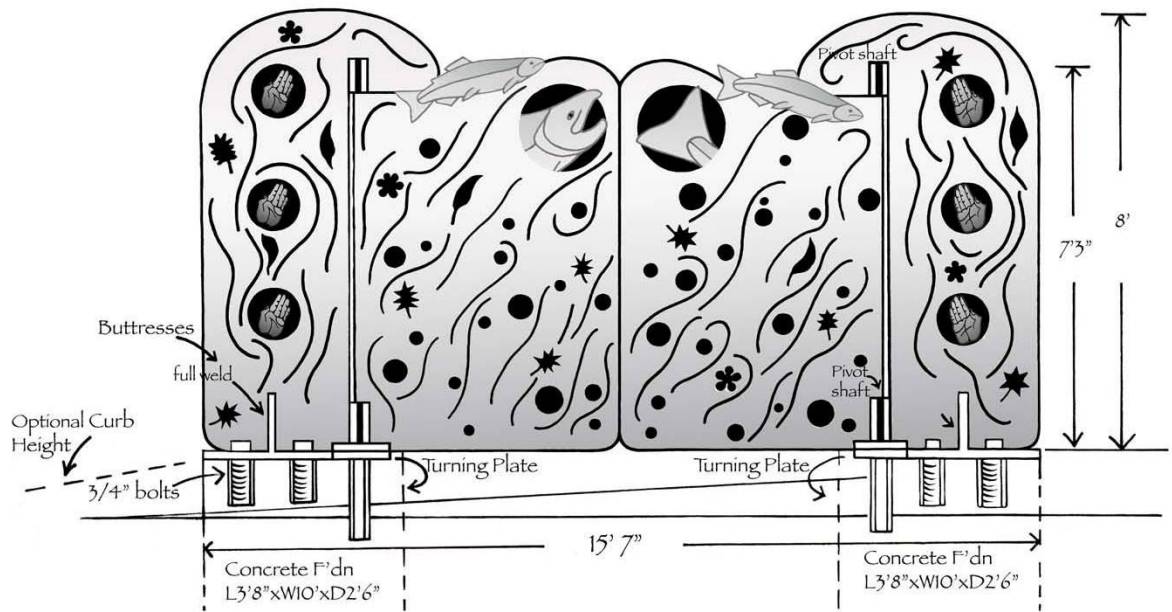
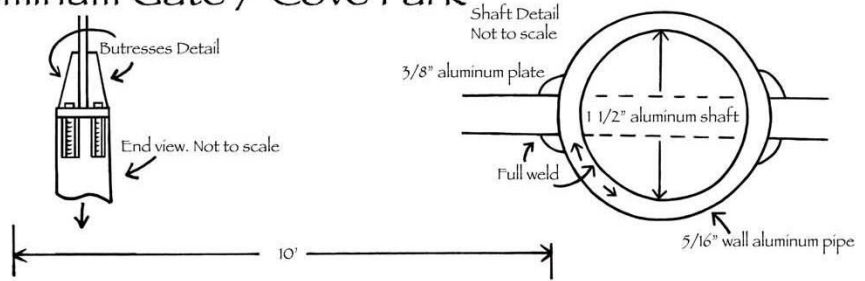
OSBORN PACIFIC GROUP INC.
 Landscape Architecture
 2105 Western Avenue, Suite 902
 Seattle, Washington 98121
 206-466-8900 osbornpacific.com



N:\Active Projects\2009\08202020_Barton Pump Station\CAD Documents\Drawings\11020464_1.dwg, 11020464_1.dwg
 PLOTTER: HP DesignJet 2450, PLOT DATE: 5/11/2011 10:43:31 AM, PLOT BY: BERTHOLD, PLOT SCALE: 1"=10', PLOT SHEET: 1 OF 1
 WAZZES: osbornpacific.com, asplastic.com

Aluminum Gate / Cove Park

Tom Jay
July 24, 2011



Design for Barton Pump Station/Cove Park Boat Ramp Tie-up
Artist: Tom Jay June 2011



Projected Overall Length: 13-feet

Material: 1/4" Corten Steel

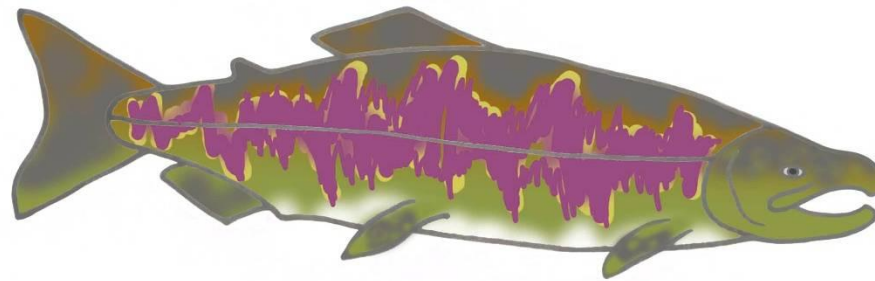


Tom Jay



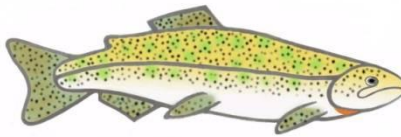
Male Chinook (King)

Tom Jay
"Salmon Home Run"
Colors for Cove Park
July 2011



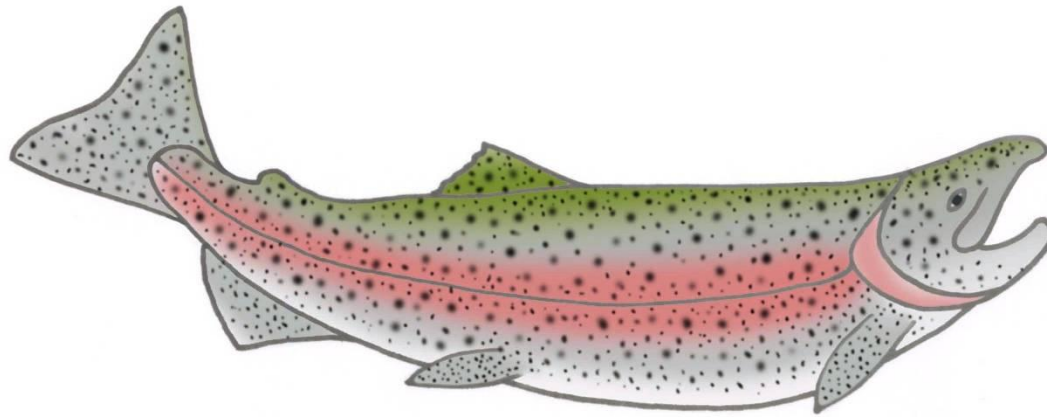
Tom Jay
"Salmon Home Run"
Colors for Cove Park
July 2011

Male Chum



Tom Jay
"Salmon Home Run"
Colors for Cove Park
July 2011

Cutthroat



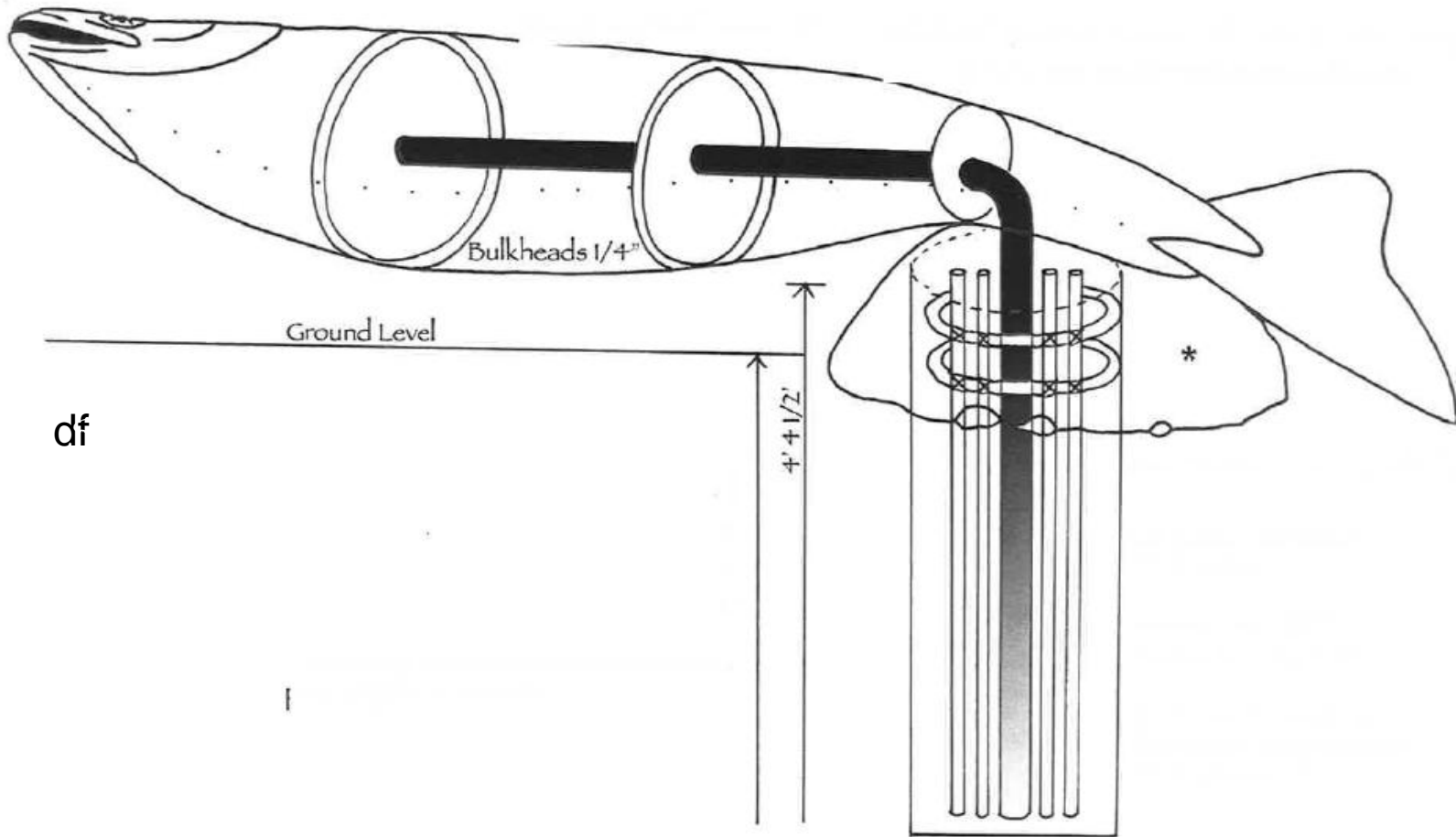
Tom Jay
"Salmon Home Run"
Colors for Cove Park
July 2011

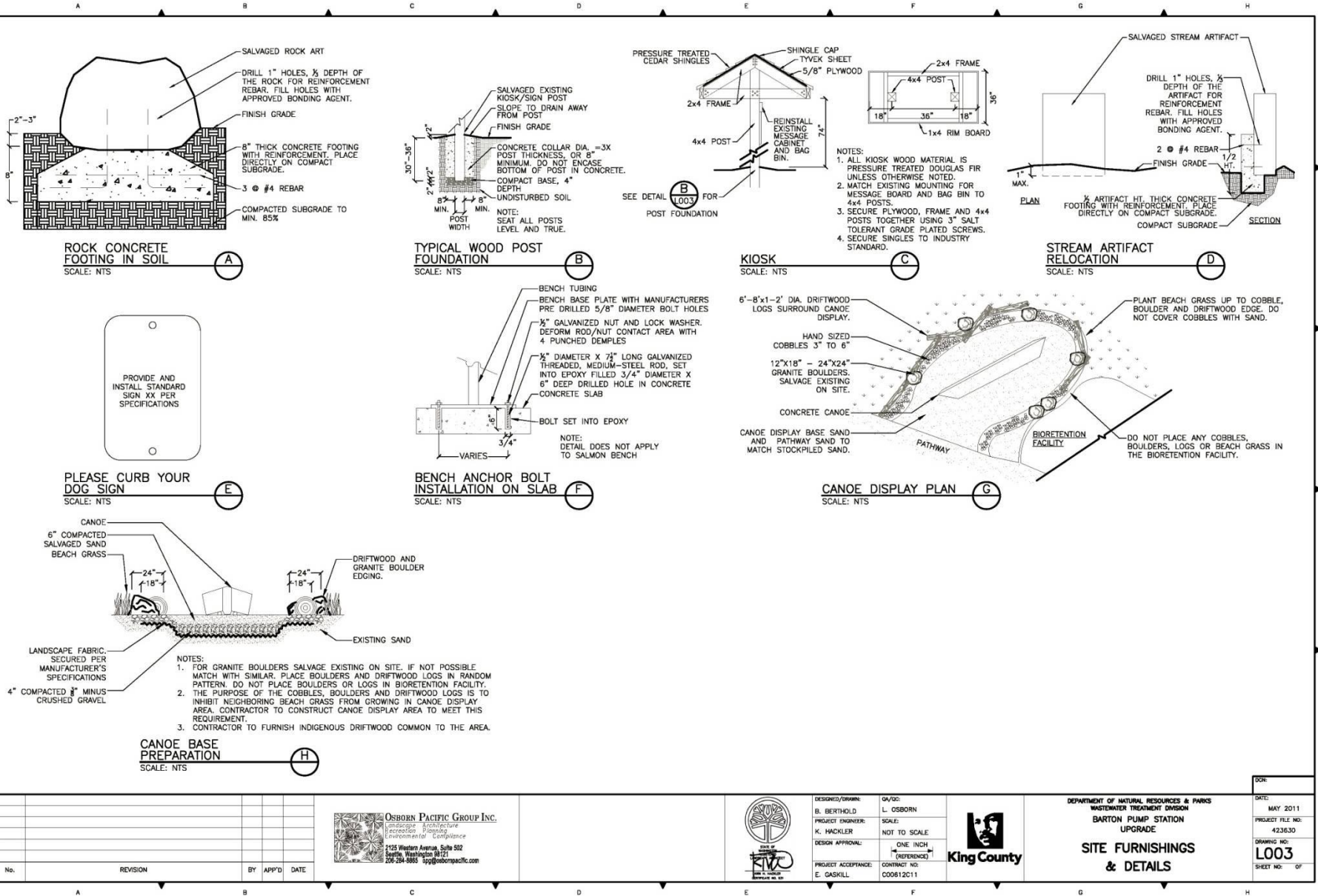
MaleSteelhead



Salmon Bench Cove Park / Barton Pump Station

© Tom Jay 2011





N:\Active Projects\2009\08020205 Barton Pump Station\CAD Documents\Active\L003.dwg | Layout: L003
 DATE: 4/23/11 10:01:10 AM
 USER: jbrandon
 IMAGE: ink, wpl, hpc

OSBORN PACIFIC GROUP INC.
 landscape architecture
 interior planning
 environmental landscaping
 1125 Western Avenue, Suite 532
 Seattle, Washington 98121
 206-284-8885 info@osbornpacific.com

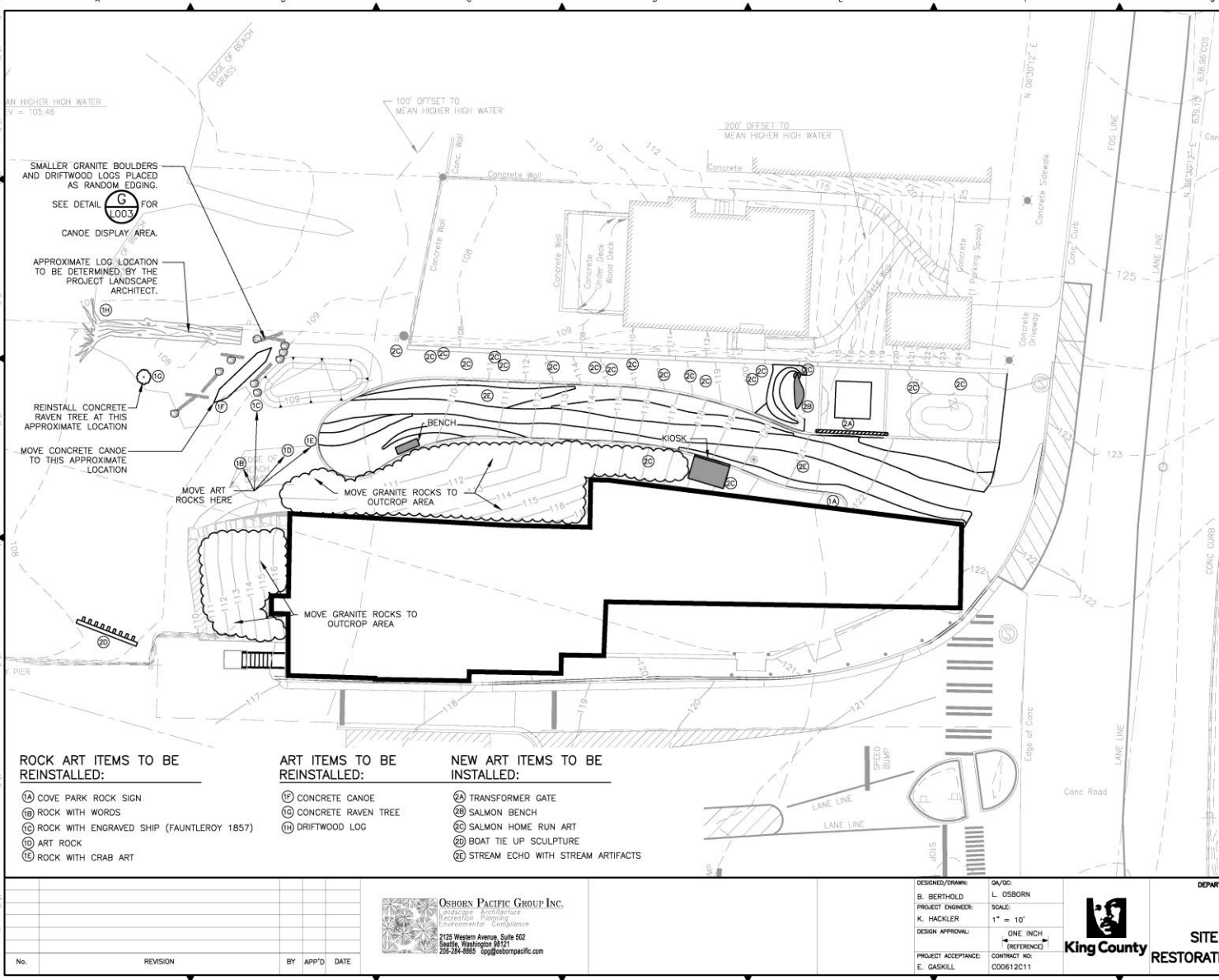


DESIGNED/OWNER: B. BERTHOLD
 PROJECT ENGINEER: K. HACKLER
 DESIGN APPROVAL: [Signature]
 PROJECT ACCEPTANCE: E. GASKILL
 DATE: L. OSBORN
 SCALE: NOT TO SCALE
 ONE INCH (REFERENCE)



DEPARTMENT OF NATURAL RESOURCES & PARKS
 WASTEWATER TREATMENT DIVISION
BARTON PUMP STATION UPGRADE
SITE FURNISHINGS & DETAILS
 DATE: MAY 2011
 PROJECT FILE NO: 423630
 DRAWING NO: **L003**
 SHEET NO: OF

No.	REVISION	BY	APP'D	DATE



GENERAL NOTES

1. SEE SHEET L003 FOR LANDSCAPE SITE FURNISHING & DETAILS
2. SEE SHEET L101 FOR LANDSCAPE DEMOLITION AND ARTWORK SALVAGE PLAN
3. SEE SHEET L102 FOR LANDSCAPE PLANTING PLAN
4. REFER TO STRUCTURAL DRAWINGS FOR FURTHER NOTES REGARDING TRANSFORMER GATE, SALMON BENCH, SALMON HOME RUN AND BOAT TIE UP SCULPTURE ARTWORK AND INSTALLATION.
5. CONTRACTOR WILL NOTIFY PROJECT REPRESENTATIVE WHEN READY TO INSTALL STREAM ARTIFACTS NO LESS THAN 48 HOURS IN ADVANCE. PROJECT REPRESENTATIVE WILL SUPERVISE INSTALLATION OF STREAM ARTIFACTS IN STREAM ECHO.
6. STOCKPILED EXISTING LOG IN ART STORAGE AREA. REPLACE LOG AFTER ALL EARTHWORK AND MACHINE ACCESS IS COMPLETED AND PRIOR TO BEACH GRASS INSTALLATION. LOG LOCATION TO BE DETERMINED BY LANDSCAPE ARCHITECT.

ROCK ART ITEMS TO BE REINSTALLED:

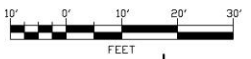
- (A) COVE PARK ROCK SIGN
- (B) ROCK WITH WORDS
- (C) ROCK WITH ENGRAVED SHIP (FAUNTLEROY 1857)
- (D) ART ROCK
- (E) ROCK WITH CRAB ART

ART ITEMS TO BE REINSTALLED:

- (F) CONCRETE CANOE
- (G) CONCRETE RAVEN TREE
- (H) DRIFTWOOD LOG

NEW ART ITEMS TO BE INSTALLED:

- (I) TRANSFORMER GATE
- (J) SALMON BENCH
- (K) SALMON HOME RUN ART
- (L) BOAT TIE UP SCULPTURE
- (M) STREAM ECHO WITH STREAM ARTIFACTS



Call 2 Working Days Before You Dig!
1-800-424-5555

N:\Active Projects\2009\0902\05 Barton Pump Station\AO Documents\A1\W\1.04.dwg | Layout: L104
 D:\Working\Bartons\Bartons.dwg | P:\Working\Bartons\Bartons.dwg | X:\Working\Bartons\Bartons.dwg | S:\Working\Bartons\Bartons.dwg | T:\Working\Bartons\Bartons.dwg
 I:\Projects\2009\0902\05 Barton Pump Station\AO Documents\A1\W\1.04.dwg | L:\Working\Bartons\Bartons.dwg | M:\Working\Bartons\Bartons.dwg | O:\Working\Bartons\Bartons.dwg
 P:\Working\Bartons\Bartons.dwg | Q:\Working\Bartons\Bartons.dwg | R:\Working\Bartons\Bartons.dwg | S:\Working\Bartons\Bartons.dwg | T:\Working\Bartons\Bartons.dwg
 U:\Working\Bartons\Bartons.dwg | V:\Working\Bartons\Bartons.dwg | W:\Working\Bartons\Bartons.dwg | X:\Working\Bartons\Bartons.dwg | Y:\Working\Bartons\Bartons.dwg
 Z:\Working\Bartons\Bartons.dwg | 1:\Working\Bartons\Bartons.dwg | 2:\Working\Bartons\Bartons.dwg | 3:\Working\Bartons\Bartons.dwg | 4:\Working\Bartons\Bartons.dwg
 5:\Working\Bartons\Bartons.dwg | 6:\Working\Bartons\Bartons.dwg | 7:\Working\Bartons\Bartons.dwg | 8:\Working\Bartons\Bartons.dwg | 9:\Working\Bartons\Bartons.dwg
 10:\Working\Bartons\Bartons.dwg | 11:\Working\Bartons\Bartons.dwg | 12:\Working\Bartons\Bartons.dwg | 13:\Working\Bartons\Bartons.dwg | 14:\Working\Bartons\Bartons.dwg
 15:\Working\Bartons\Bartons.dwg | 16:\Working\Bartons\Bartons.dwg | 17:\Working\Bartons\Bartons.dwg | 18:\Working\Bartons\Bartons.dwg | 19:\Working\Bartons\Bartons.dwg
 20:\Working\Bartons\Bartons.dwg | 21:\Working\Bartons\Bartons.dwg | 22:\Working\Bartons\Bartons.dwg | 23:\Working\Bartons\Bartons.dwg | 24:\Working\Bartons\Bartons.dwg
 25:\Working\Bartons\Bartons.dwg | 26:\Working\Bartons\Bartons.dwg | 27:\Working\Bartons\Bartons.dwg | 28:\Working\Bartons\Bartons.dwg | 29:\Working\Bartons\Bartons.dwg
 30:\Working\Bartons\Bartons.dwg | 31:\Working\Bartons\Bartons.dwg | 32:\Working\Bartons\Bartons.dwg | 33:\Working\Bartons\Bartons.dwg | 34:\Working\Bartons\Bartons.dwg
 35:\Working\Bartons\Bartons.dwg | 36:\Working\Bartons\Bartons.dwg | 37:\Working\Bartons\Bartons.dwg | 38:\Working\Bartons\Bartons.dwg | 39:\Working\Bartons\Bartons.dwg
 40:\Working\Bartons\Bartons.dwg | 41:\Working\Bartons\Bartons.dwg | 42:\Working\Bartons\Bartons.dwg | 43:\Working\Bartons\Bartons.dwg | 44:\Working\Bartons\Bartons.dwg
 45:\Working\Bartons\Bartons.dwg | 46:\Working\Bartons\Bartons.dwg | 47:\Working\Bartons\Bartons.dwg | 48:\Working\Bartons\Bartons.dwg | 49:\Working\Bartons\Bartons.dwg
 50:\Working\Bartons\Bartons.dwg | 51:\Working\Bartons\Bartons.dwg | 52:\Working\Bartons\Bartons.dwg | 53:\Working\Bartons\Bartons.dwg | 54:\Working\Bartons\Bartons.dwg
 55:\Working\Bartons\Bartons.dwg | 56:\Working\Bartons\Bartons.dwg | 57:\Working\Bartons\Bartons.dwg | 58:\Working\Bartons\Bartons.dwg | 59:\Working\Bartons\Bartons.dwg
 60:\Working\Bartons\Bartons.dwg | 61:\Working\Bartons\Bartons.dwg | 62:\Working\Bartons\Bartons.dwg | 63:\Working\Bartons\Bartons.dwg | 64:\Working\Bartons\Bartons.dwg
 65:\Working\Bartons\Bartons.dwg | 66:\Working\Bartons\Bartons.dwg | 67:\Working\Bartons\Bartons.dwg | 68:\Working\Bartons\Bartons.dwg | 69:\Working\Bartons\Bartons.dwg
 70:\Working\Bartons\Bartons.dwg | 71:\Working\Bartons\Bartons.dwg | 72:\Working\Bartons\Bartons.dwg | 73:\Working\Bartons\Bartons.dwg | 74:\Working\Bartons\Bartons.dwg
 75:\Working\Bartons\Bartons.dwg | 76:\Working\Bartons\Bartons.dwg | 77:\Working\Bartons\Bartons.dwg | 78:\Working\Bartons\Bartons.dwg | 79:\Working\Bartons\Bartons.dwg
 80:\Working\Bartons\Bartons.dwg | 81:\Working\Bartons\Bartons.dwg | 82:\Working\Bartons\Bartons.dwg | 83:\Working\Bartons\Bartons.dwg | 84:\Working\Bartons\Bartons.dwg
 85:\Working\Bartons\Bartons.dwg | 86:\Working\Bartons\Bartons.dwg | 87:\Working\Bartons\Bartons.dwg | 88:\Working\Bartons\Bartons.dwg | 89:\Working\Bartons\Bartons.dwg
 90:\Working\Bartons\Bartons.dwg | 91:\Working\Bartons\Bartons.dwg | 92:\Working\Bartons\Bartons.dwg | 93:\Working\Bartons\Bartons.dwg | 94:\Working\Bartons\Bartons.dwg
 95:\Working\Bartons\Bartons.dwg | 96:\Working\Bartons\Bartons.dwg | 97:\Working\Bartons\Bartons.dwg | 98:\Working\Bartons\Bartons.dwg | 99:\Working\Bartons\Bartons.dwg
 100:\Working\Bartons\Bartons.dwg

No.	REVISION	BY	APP'D	DATE

OSBORN PACIFIC GROUP INC.
 Landscape Architecture
 Recreation Planning
 Environment Development
 2125 Western Avenue, Suite 502
 Seattle, Washington 98121
 206-264-8865 osgp@osbornpacific.com

DESIGNED/DRAWN:
 B. BERTHOLD / L. OSBORN
 PROJECT ENGINEER:
 K. HACKLER / SCALE: 1" = 10'
 DESIGN APPROVAL: [Signature] / ONE INCH (REFERENCE)
 PROJECT ACCEPTANCE:
 E. GASKILL / CONTRACT NO: C00612C11



**DEPARTMENT OF NATURAL RESOURCES & PARKS
 WASTEWATER TREATMENT DIVISION
 BARTON PUMP STATION
 UPGRADE**

**SITE FURNISHINGS, ART
 RESTORATION & INSTALLATION PLAN**

DATE: MAY 2011
 PROJECT FILE NO: 42363D
 DRAWING NO: **L104**
 SHEET NO: OF

Access to Park Looking West



Car Entering Pump Station Driveway (Street-End Park Entrance on Right of Photo)



Westward Facing Wall of Underground Pump Station (Existing).
Photo is Looking South Toward Ferry Terminal.



King County-owned Residential Property (any disturbed areas containing beach grass will be revegetated)



Street-End Park Public Access (pavement) & Adjacent King County Property



Beach Area Fronting Pump Station (looking south toward ferry terminal)

