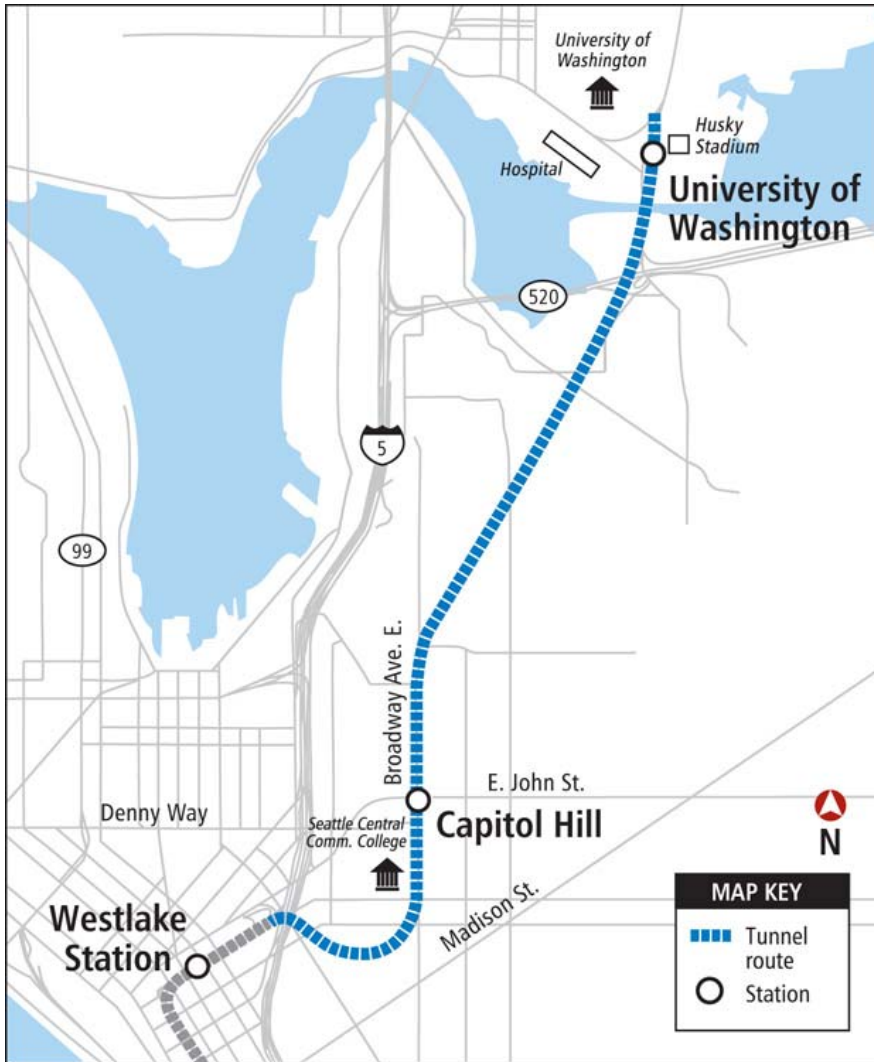


Sound Transit University Link Light Rail



Light Rail Review Panel
July 17, 2008

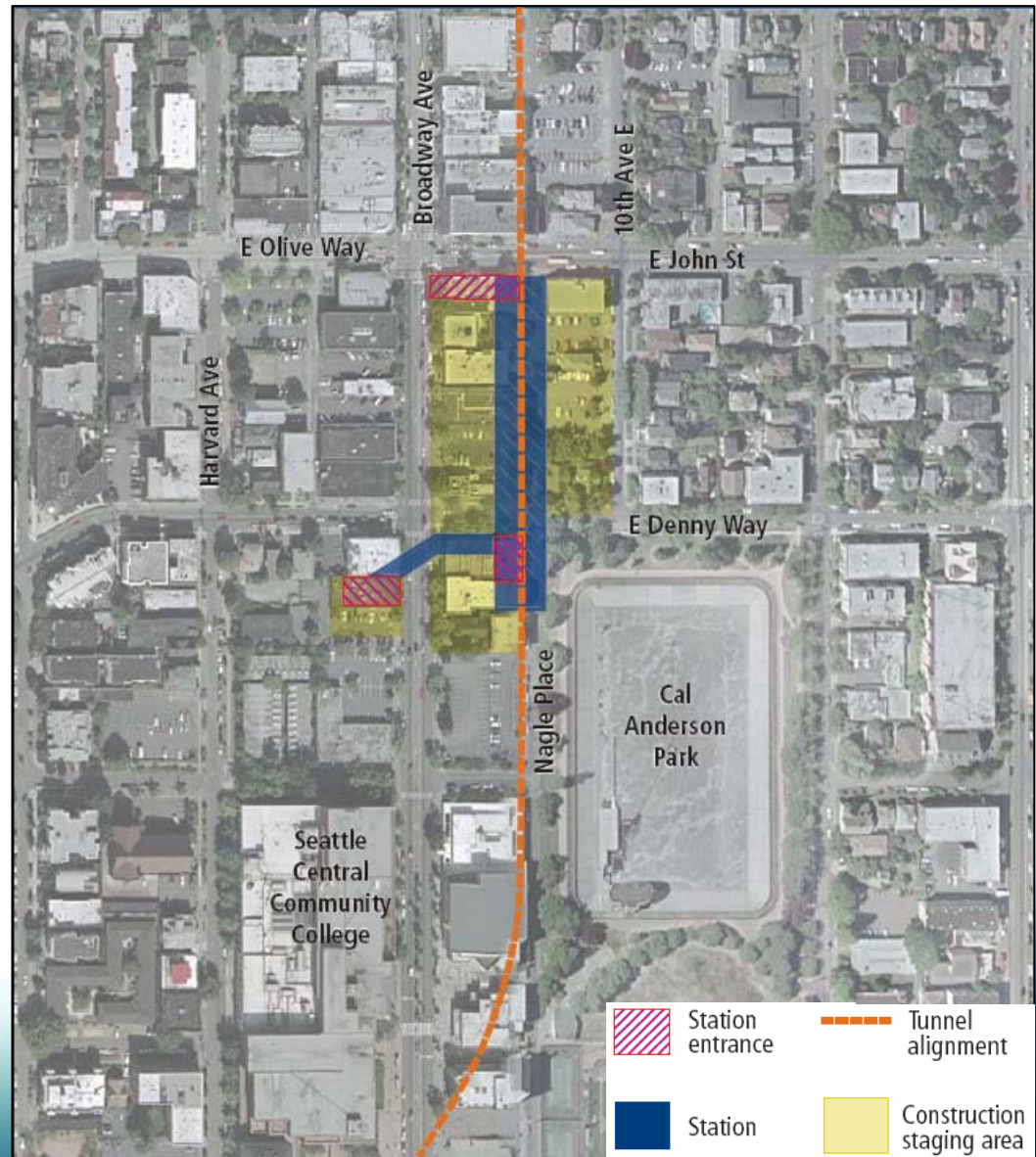
University Link



- 3.15-mile extension of Initial Segment and Airport Link
 - Capitol Hill Station
 - UW Station and crossover
- Schedule
 - Design: 2007-2008
 - Construction: 6.5 years
 - System testing: 6 months
 - Open for Service: 2016
- Adds 70,000 daily riders, 114,000 riders systemwide (2030)

Capitol Hill Station

- Underground station with 3 entrances
- Staging area - station and tunnel excavation at site
- Ridership: 14,000 daily boardings
- Travel time:
 - 6 minutes to downtown Seattle (University St.)
 - 3 minutes to UW Station



Capitol Hill Station Status & Schedule

- ✓ 30% station design - September 2007
- ✓ 60% station design - March 2008
- Complete property acquisitions, relocations - summer 2008
- 90% station design - fall 2008
- Begin site haz/mat clean-up, building demolition - late 2008
- Begin station excavation and construction - early 2010
- Begin tunneling - 2011
- Complete station and begin system testing - 2015
- University Link begins operation - 2016

STart - Sound Transit Art Program

Ellen Forney

TheRocket

Elliott Smith Takes the Hot Seat
Wire Reassembles
Hardwar Talks Trash With Dolemite

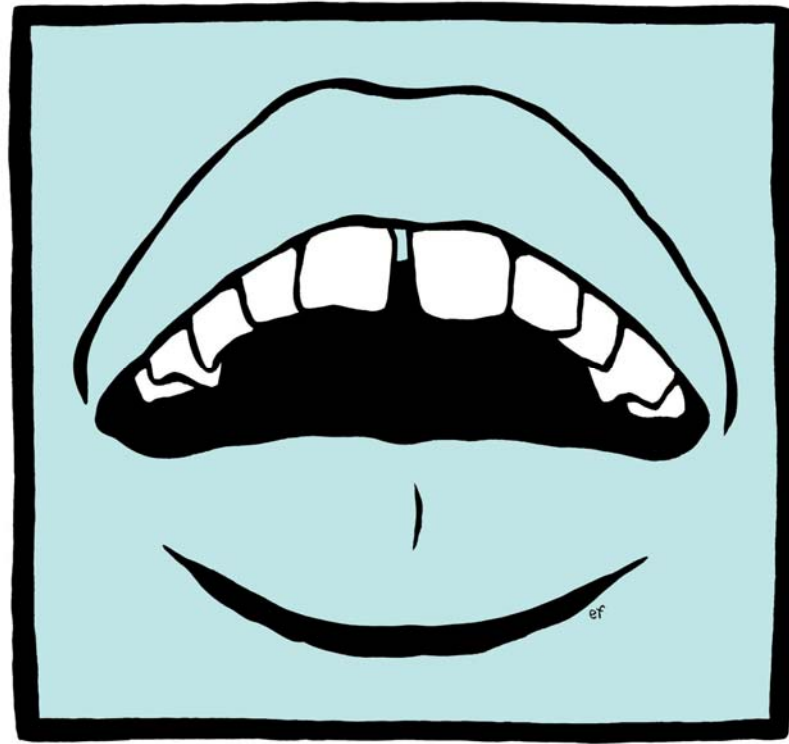
INSIDE

The Northwest Music and Entertainment Magazine April 26 - May 10, 2000 No. 324 Free



CAT POWER

What's Behind the Eyes of Chan Marshall?







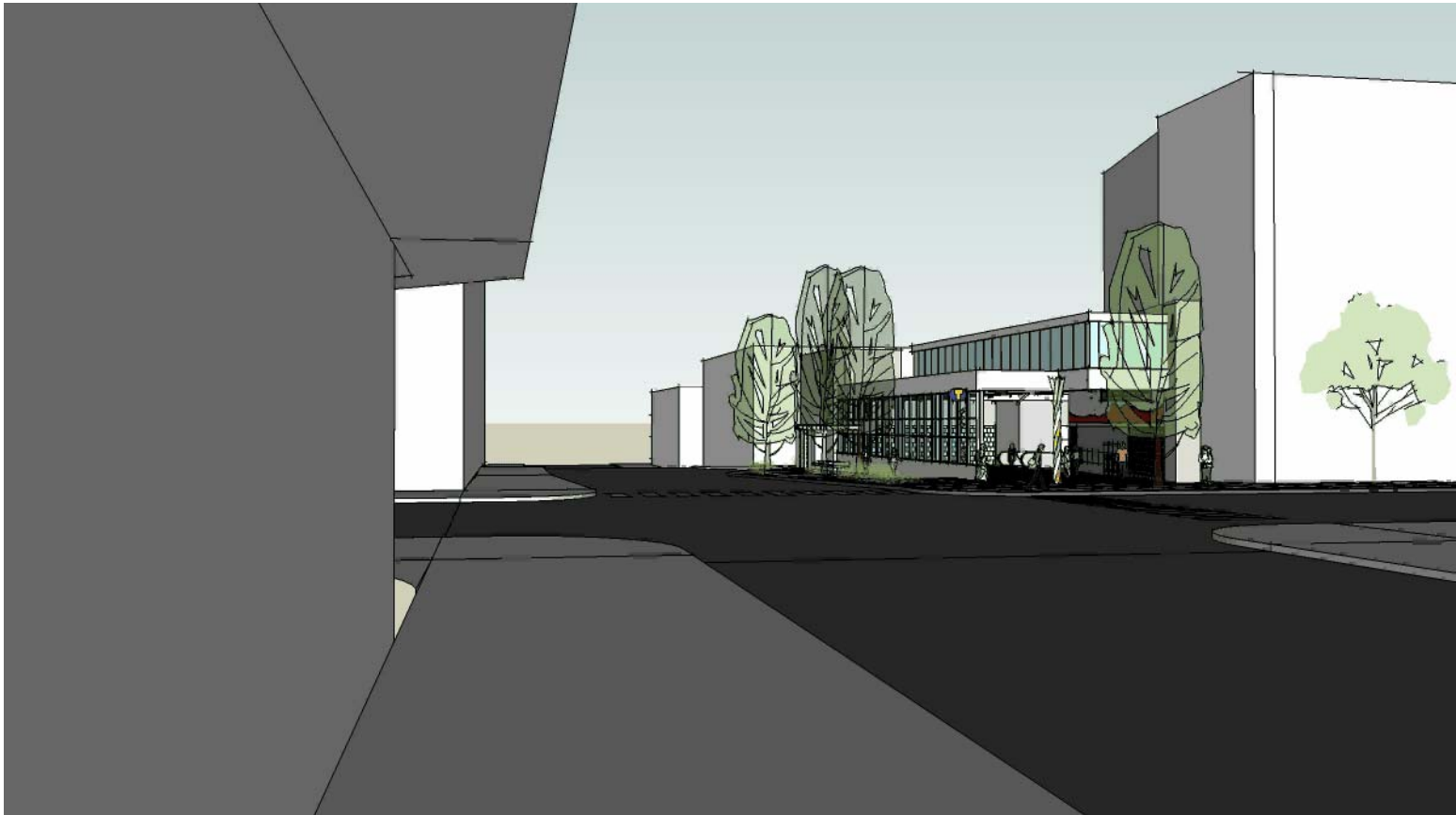


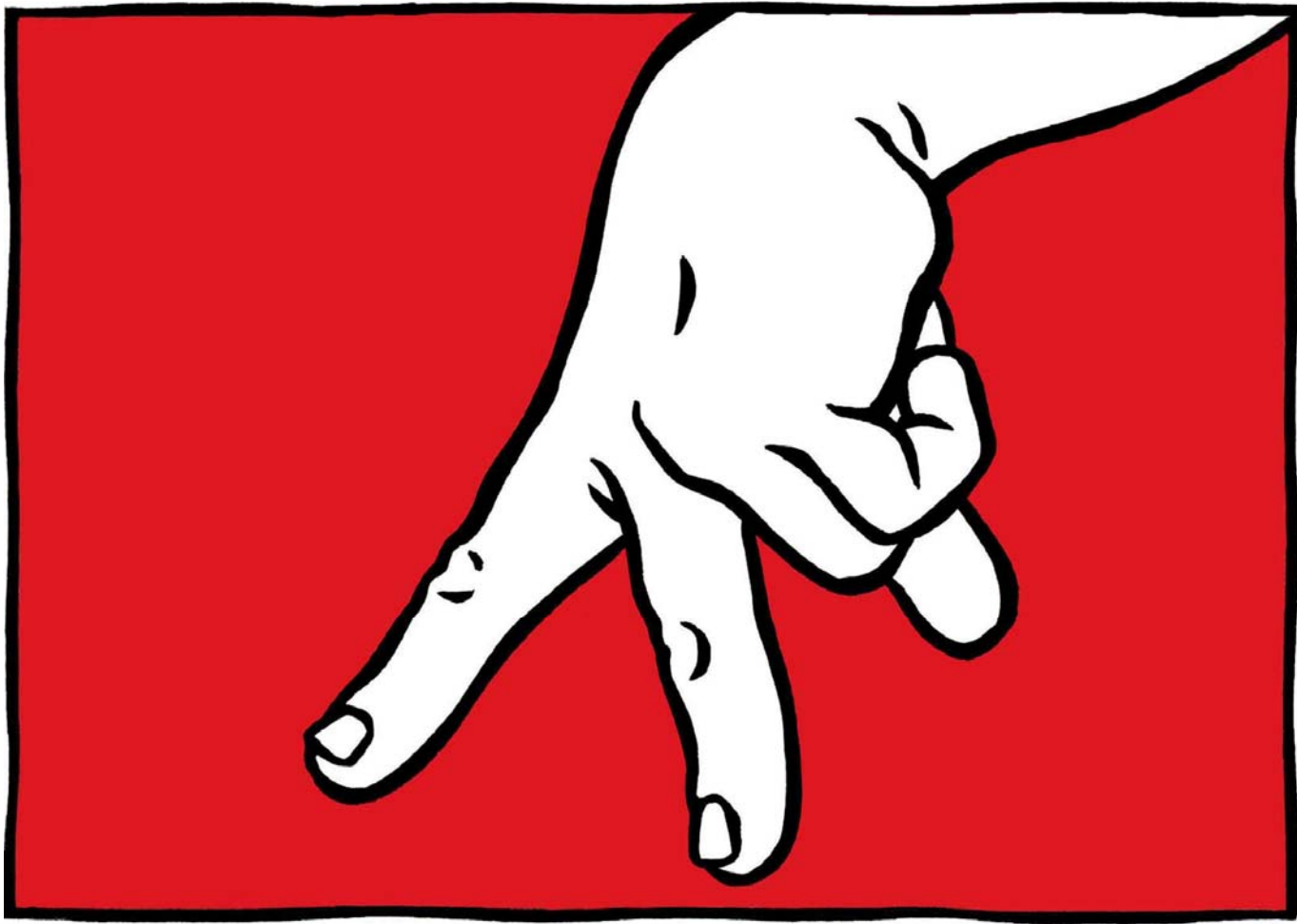




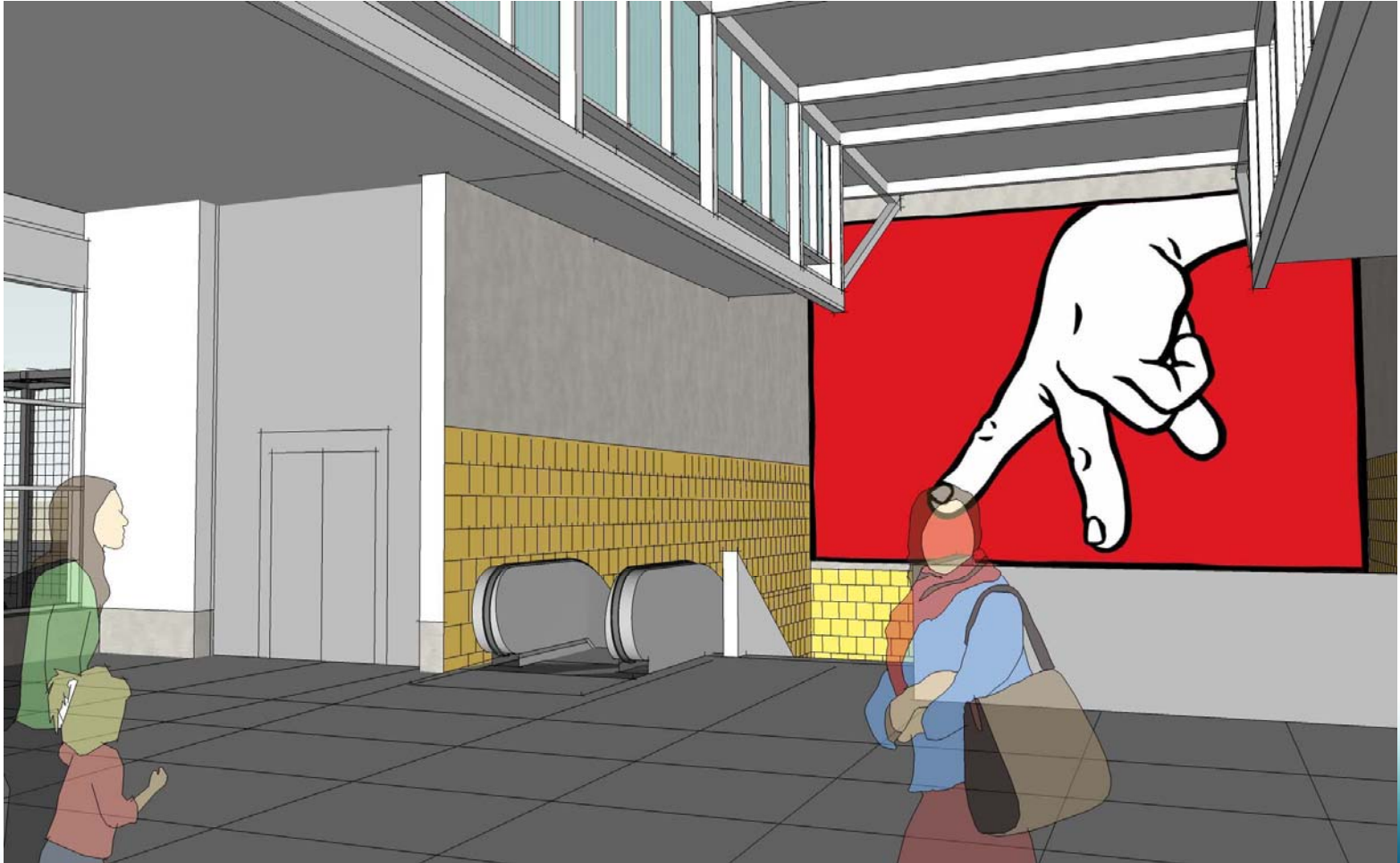




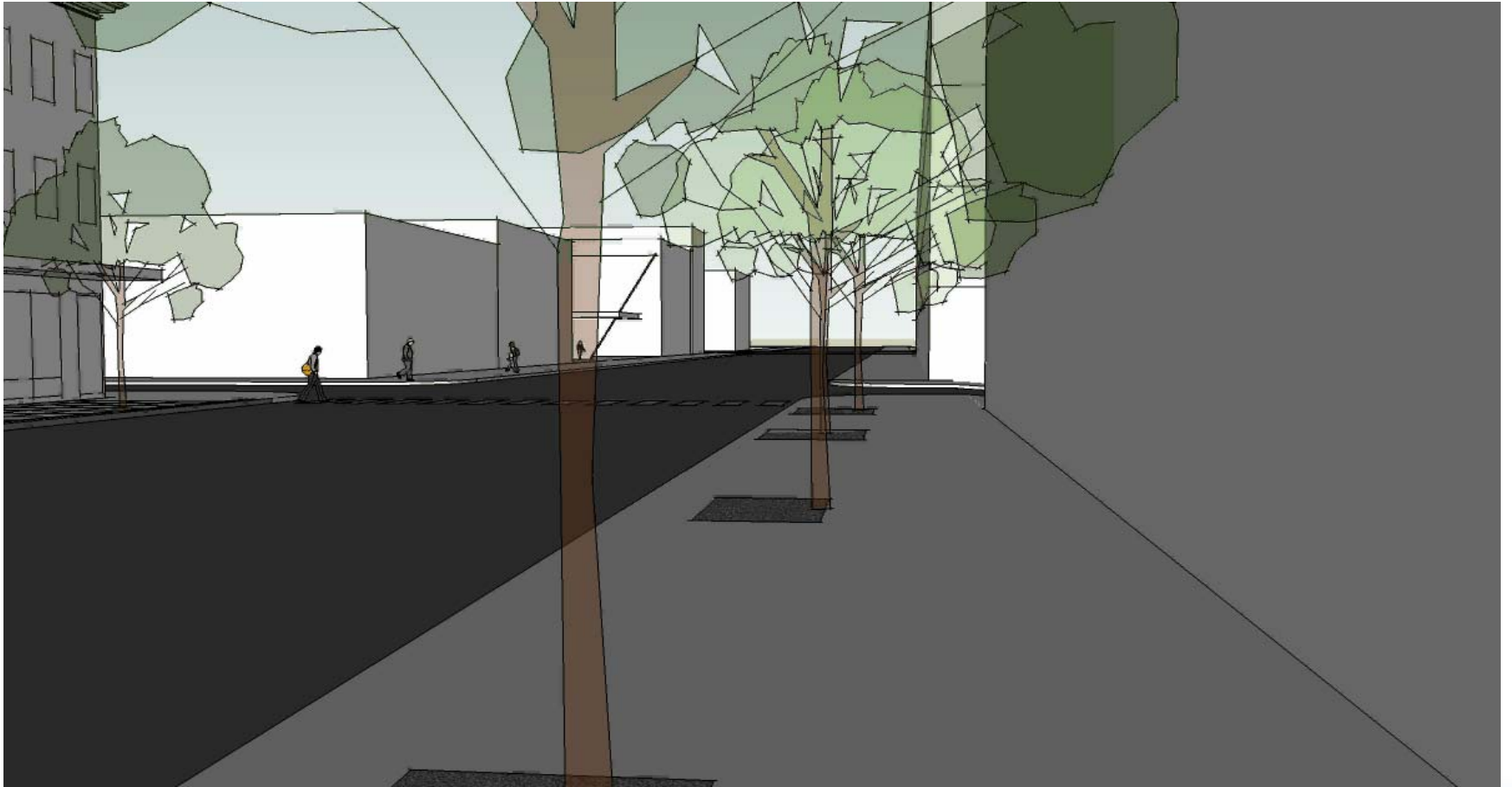






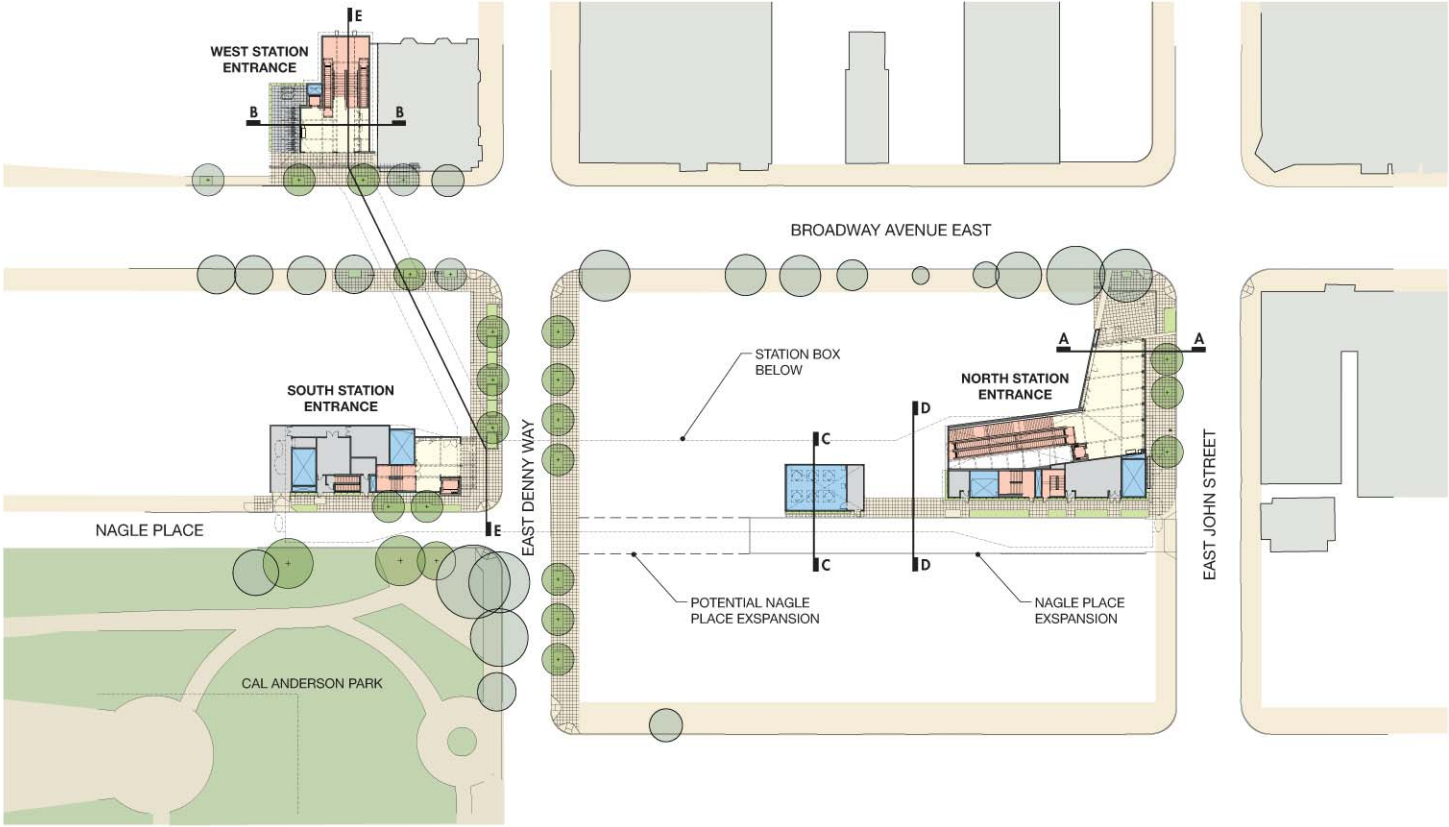






Capitol Hill Station

UNIVERSITY LINK

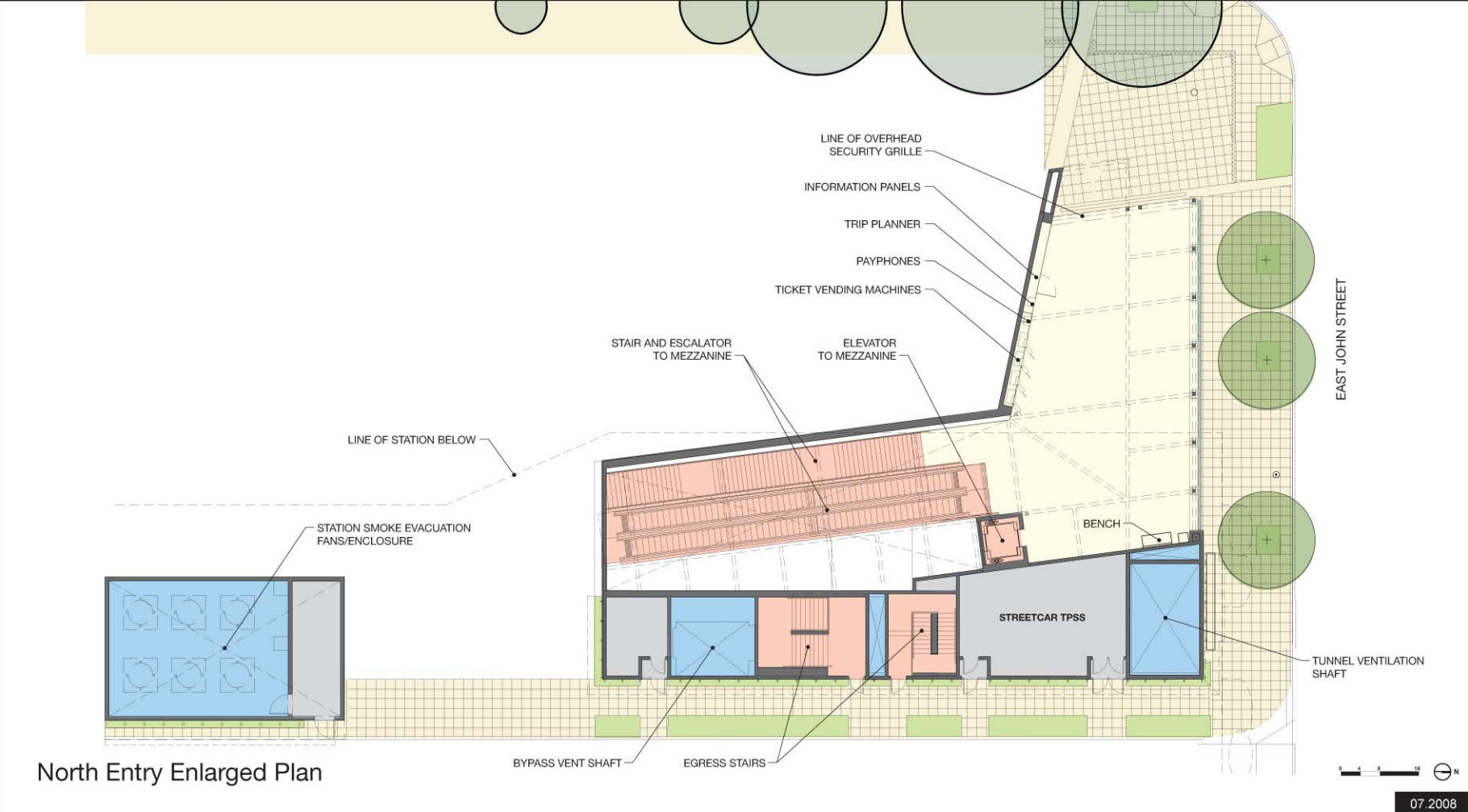


Site Plan

07.2008

Capitol Hill Station

UNIVERSITY LINK



Capitol Hill Station

UNIVERSITY LINK

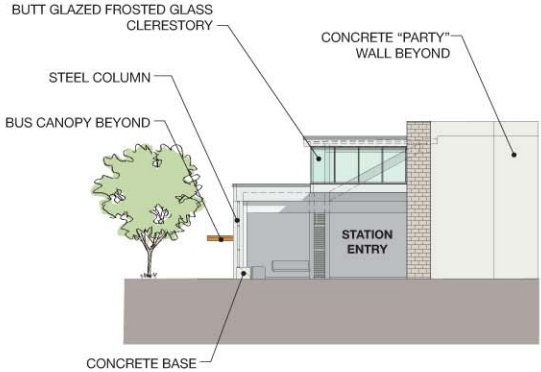


East Elevation



North Elevation

North Entry Elevations



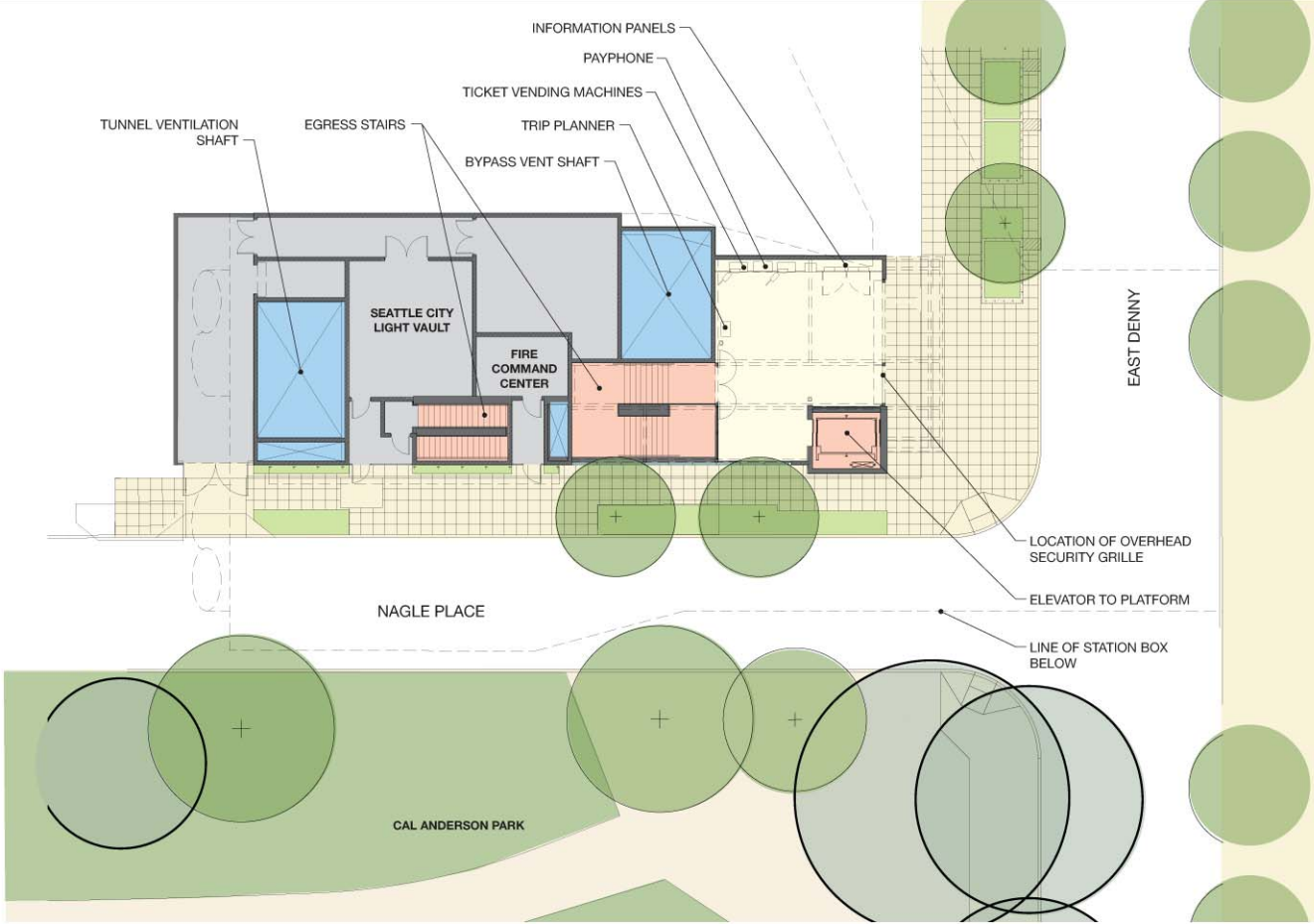
West Elevation



07.2008

Capitol Hill Station

UNIVERSITY LINK



South Entry Enlarged Plan



07.2008

Capitol Hill Station

UNIVERSITY LINK



North Elevation



East Elevation

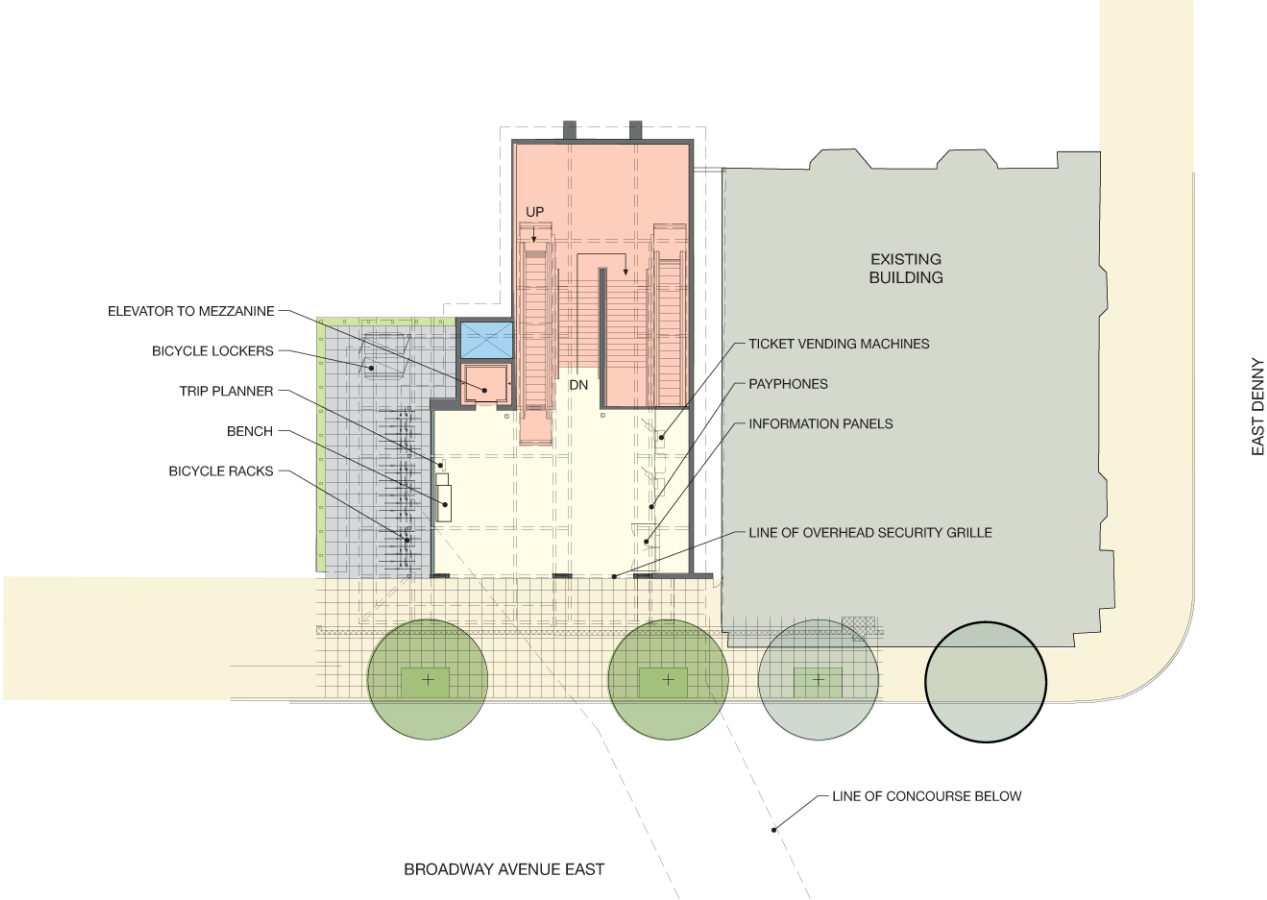
South Entry Elevations



07.2008

Capitol Hill Station

UNIVERSITY LINK



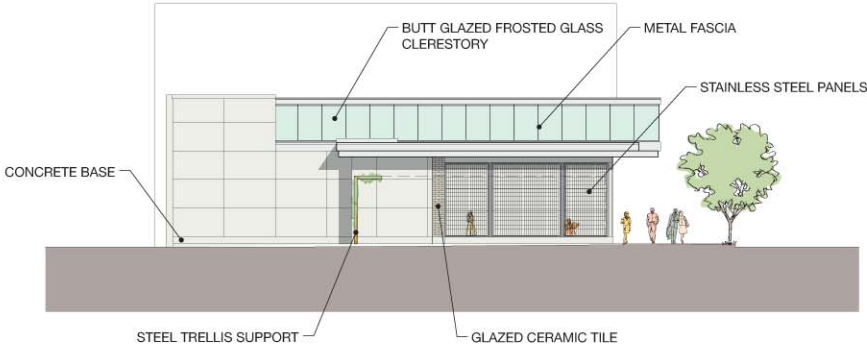
West Entry Enlarged Plan



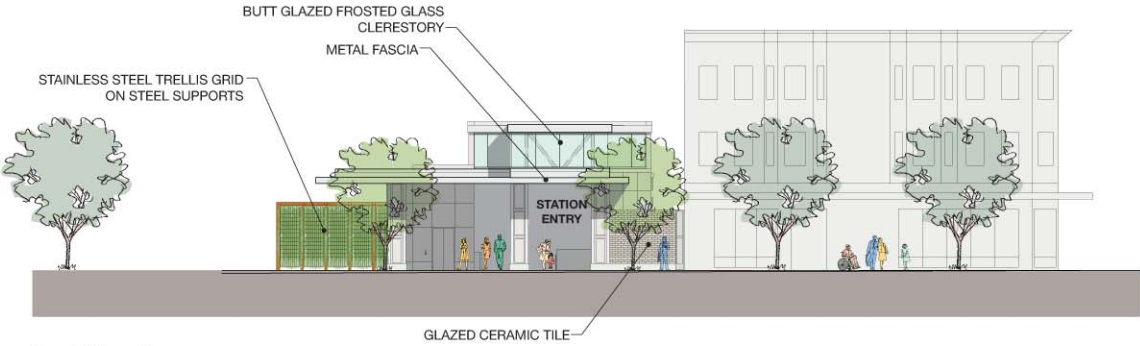
07.2008

Capitol Hill Station

UNIVERSITY LINK



South Elevation



East Elevation

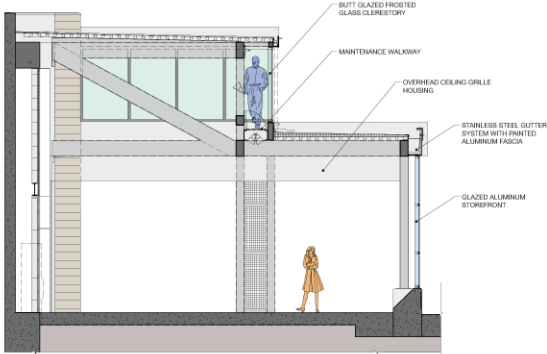
West Entry Elevations



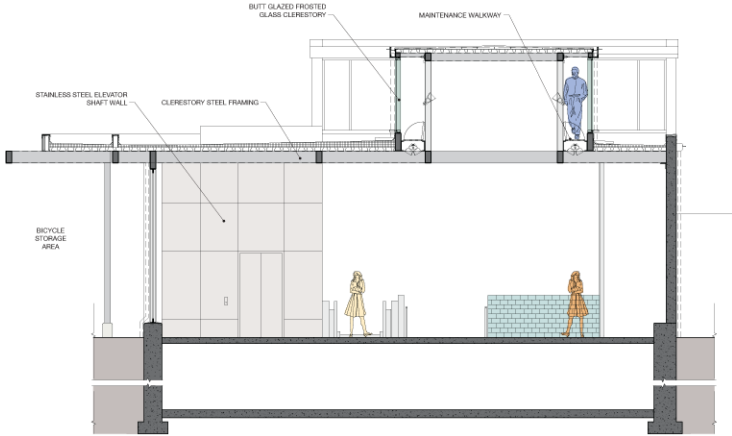
07.2008

Capitol Hill Station

UNIVERSITY LINK



Cross Section A-A



Cross Section B-B



07.2008

Capitol Hill Station

UNIVERSITY LINK



North Entry Model

07.2008

Capitol Hill Station

UNIVERSITY LINK



North Interior Model

07.2008

Capitol Hill Station

UNIVERSITY LINK



North Interior Model

07.2008

Capitol Hill Station

UNIVERSITY LINK



South Entry Model

07.2008

Capitol Hill Station

UNIVERSITY LINK



West Entry Model

07.2008

Capitol Hill Station

UNIVERSITY LINK



West Interior Model

07.2008

Capitol Hill Station

UNIVERSITY LINK

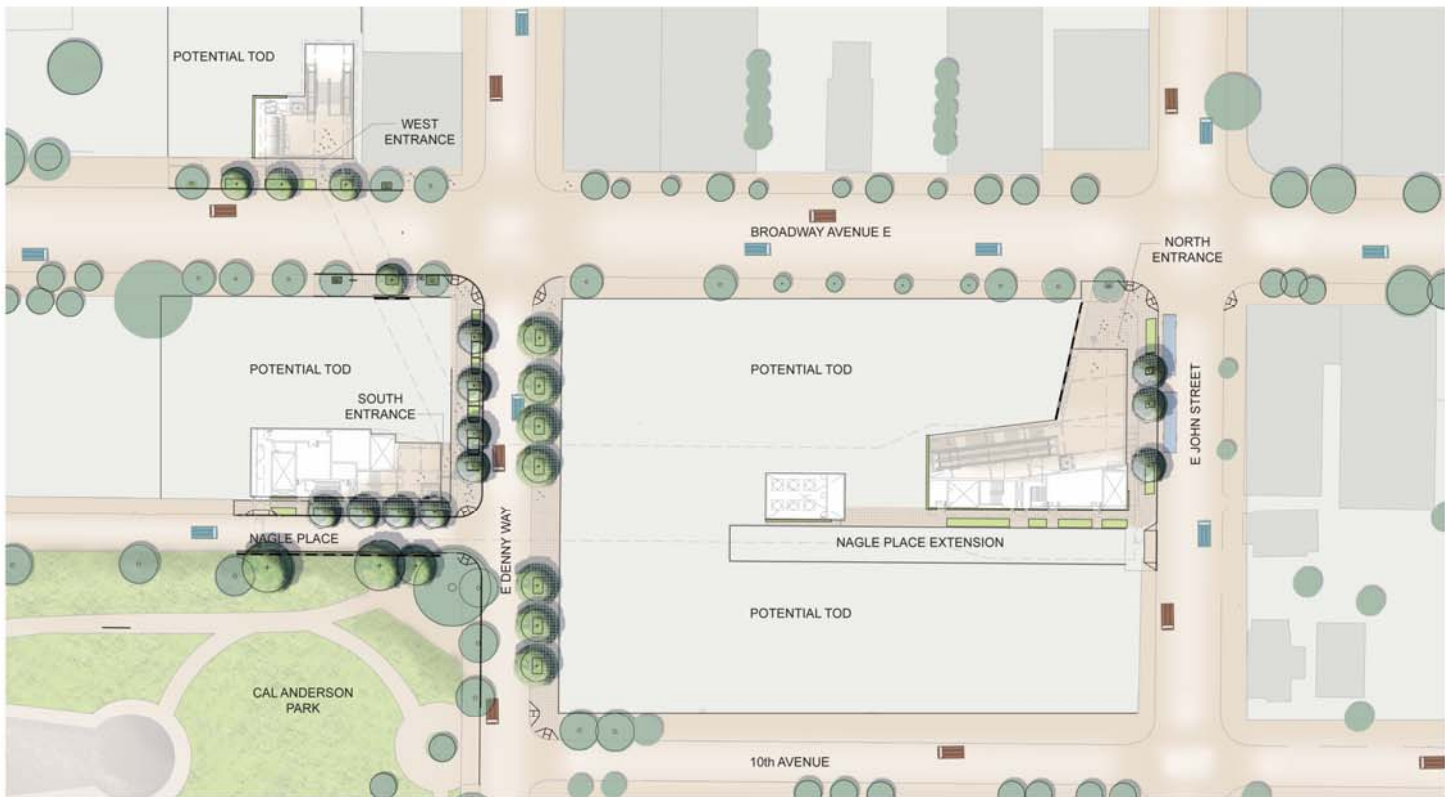


03.2008

60% REVIEW

Capitol Hill Station

UNIVERSITY LINK



Landscape Plan



03.2008

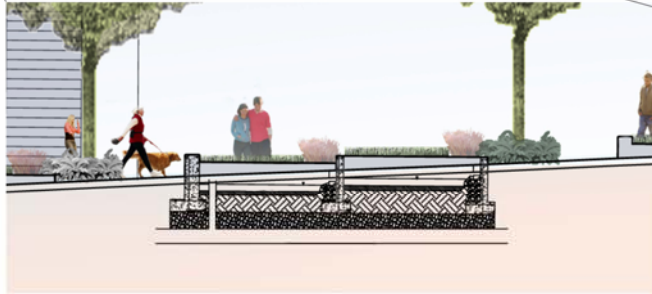
60% REVIEW

Capitol Hill Station

UNIVERSITY LINK



Section - East Denny Way looking South
Scale : 1" = 10'-0"



Rain Garden
NTS

03.2008

60% REVIEW

Capitol Hill Station

UNIVERSITY LINK



03.2008

60% REVIEW



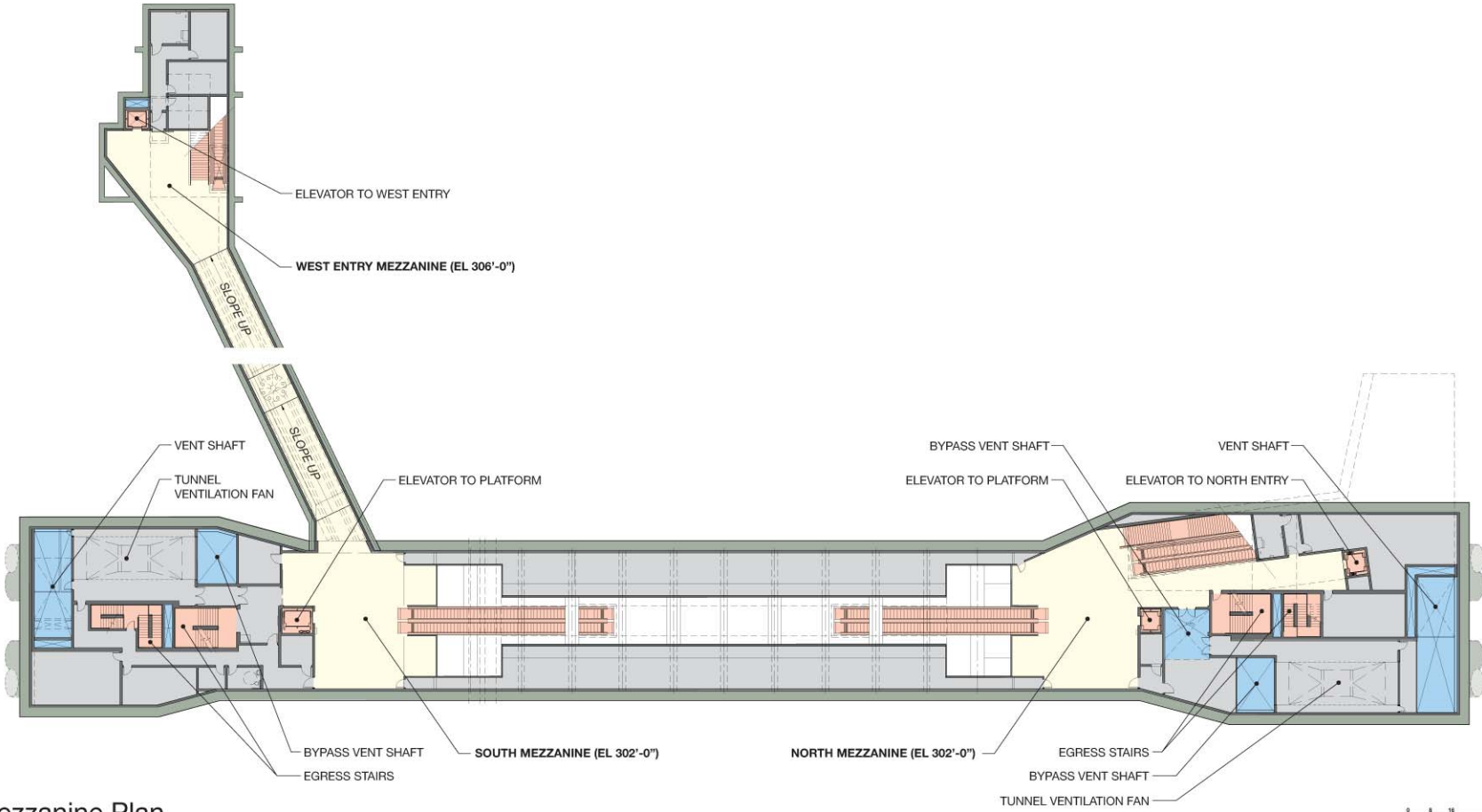
HEWITT SWIFTCOMPANY^{LLC}



CENTRAL PUGET SOUND REGIONAL TRANSIT AUTHORITY

Capitol Hill Station

UNIVERSITY LINK



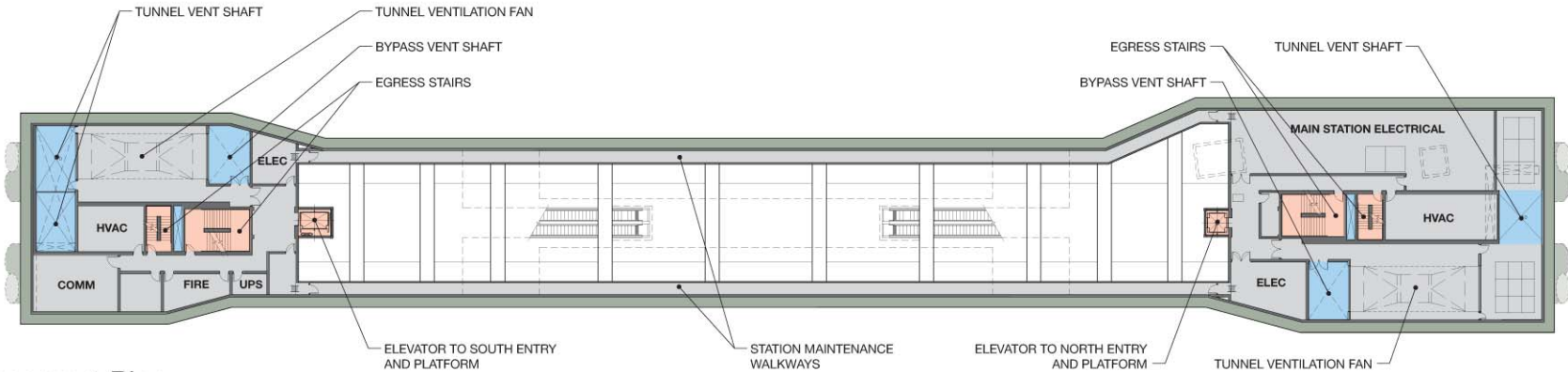
Mezzanine Plan



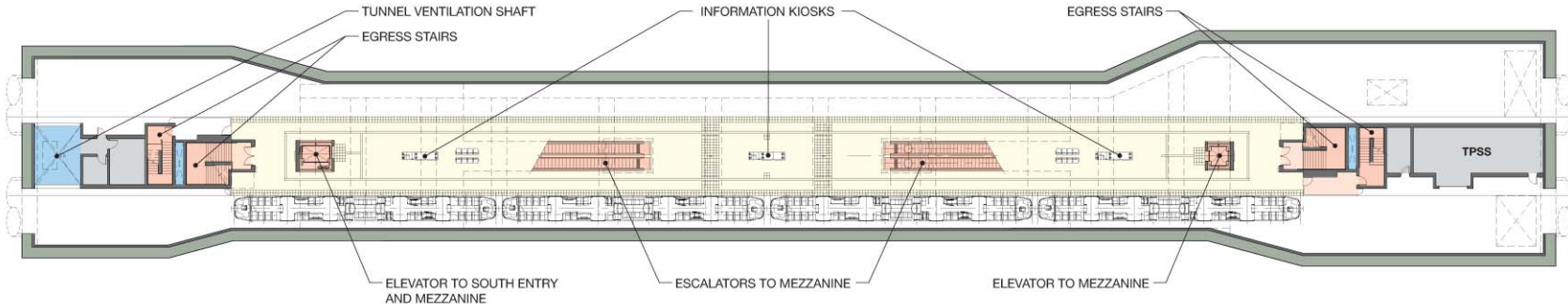
07.2008

Capitol Hill Station

UNIVERSITY LINK



Basement Plan



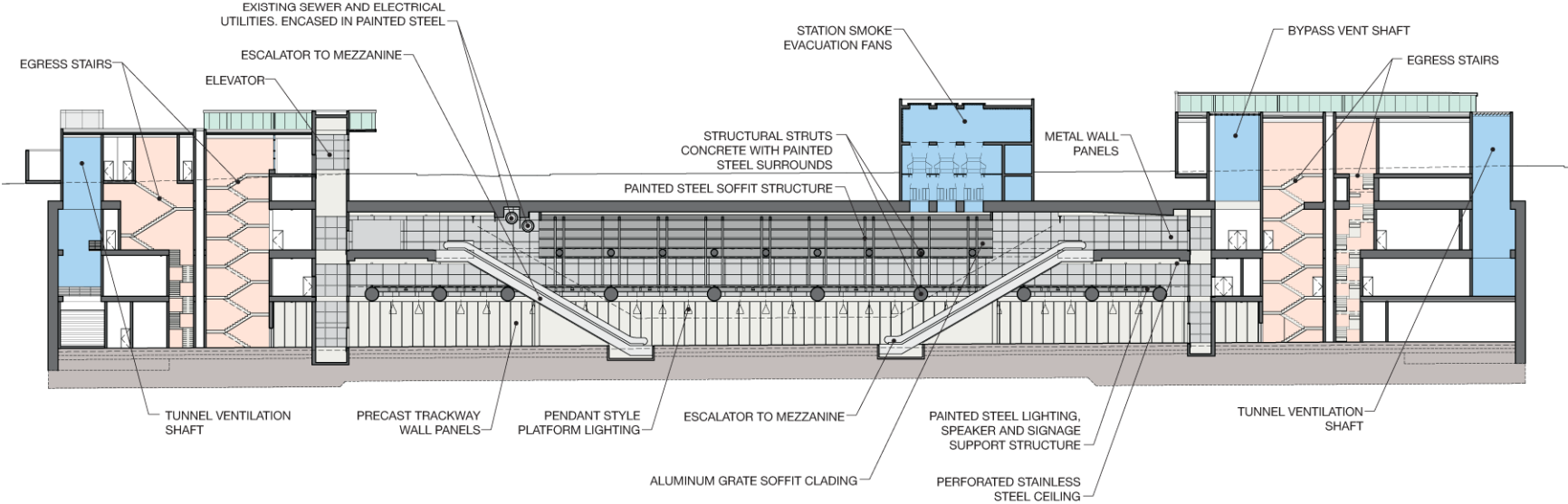
Platform Plan



07.2008

Capitol Hill Station

UNIVERSITY LINK



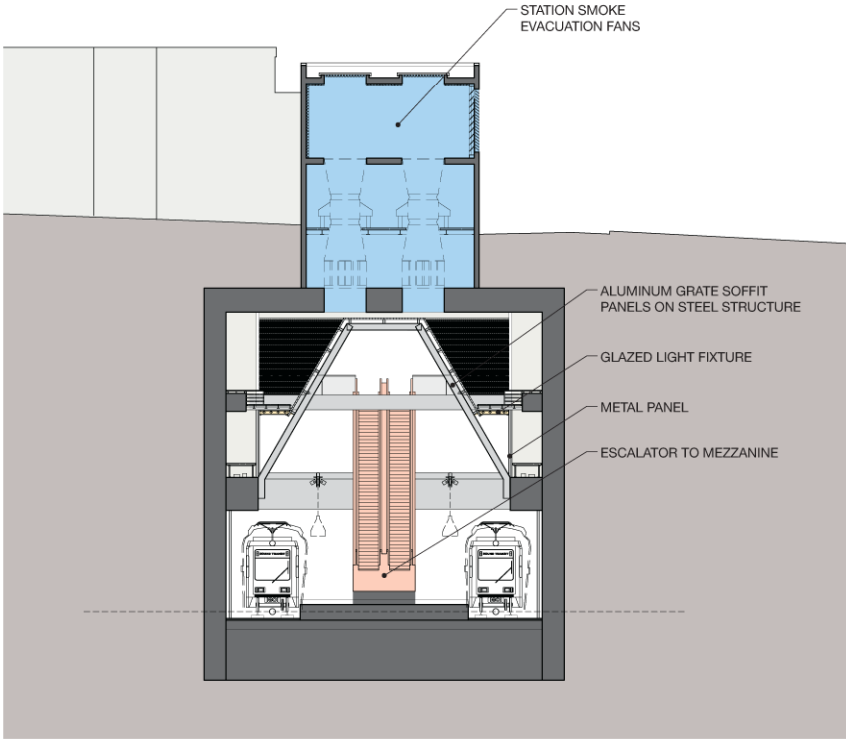
Longitudinal Section



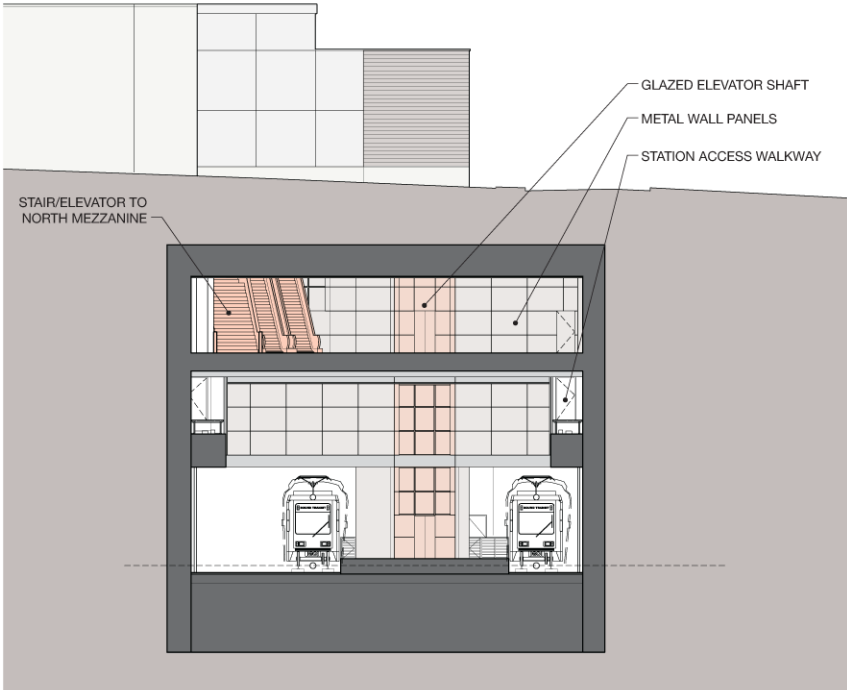
07.2008

Capitol Hill Station

UNIVERSITY LINK



Cross Section C-C



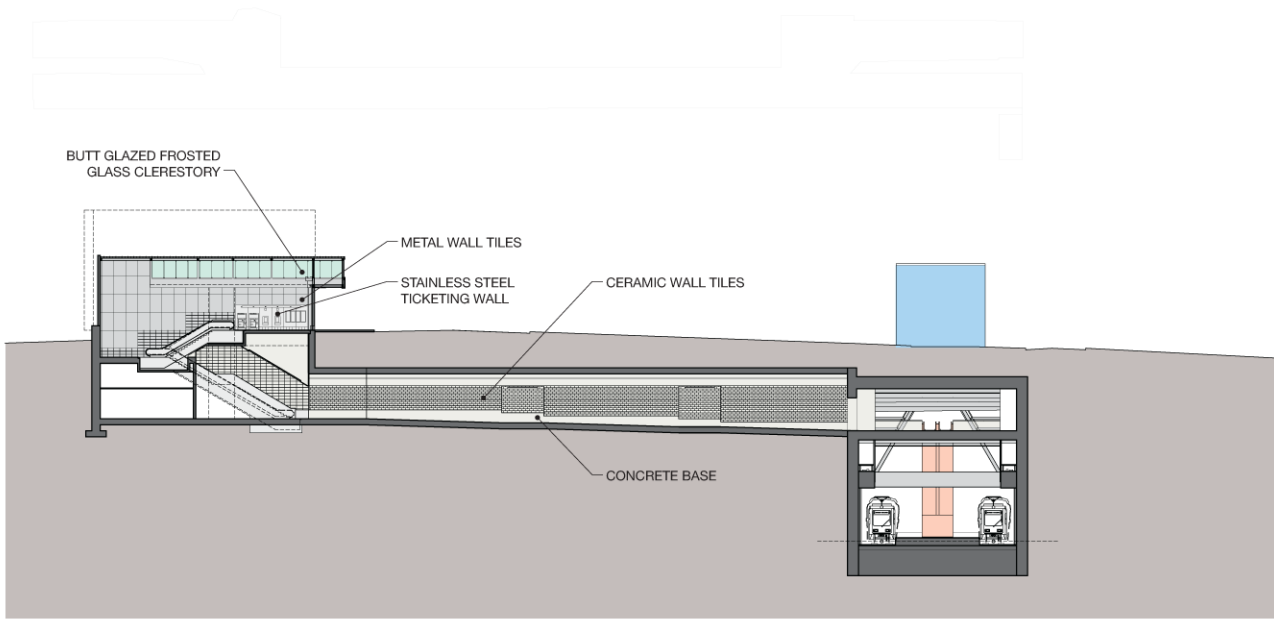
Cross Section D-D



07.2008

Capitol Hill Station

UNIVERSITY LINK



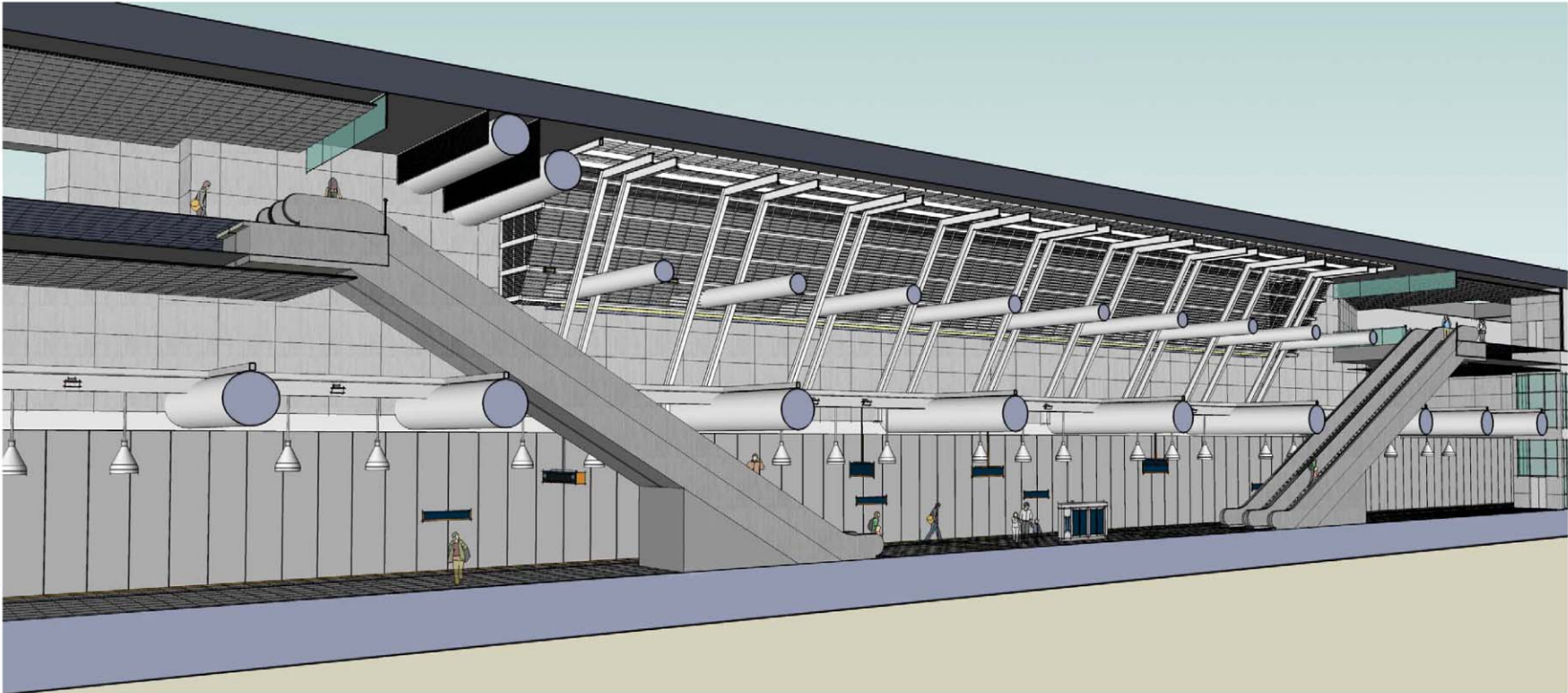
West Entry Cross Section E-E



07.2008

Capitol Hill Station

UNIVERSITY LINK

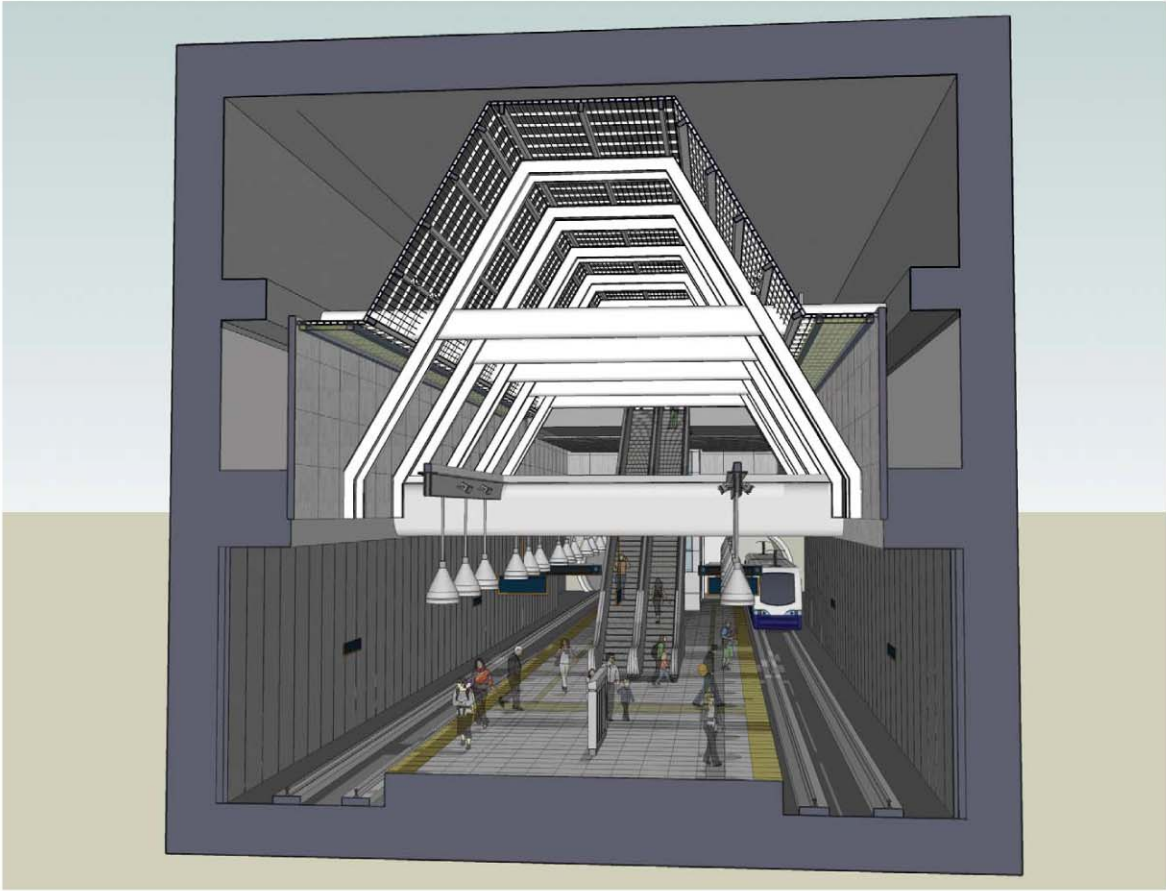


Interior Models

07.2008

Capitol Hill Station

UNIVERSITY LINK



Interior Models

07.2008

Capitol Hill Station

UNIVERSITY LINK



Interior Models - Platform 1

07.2008

Capitol Hill Station

UNIVERSITY LINK

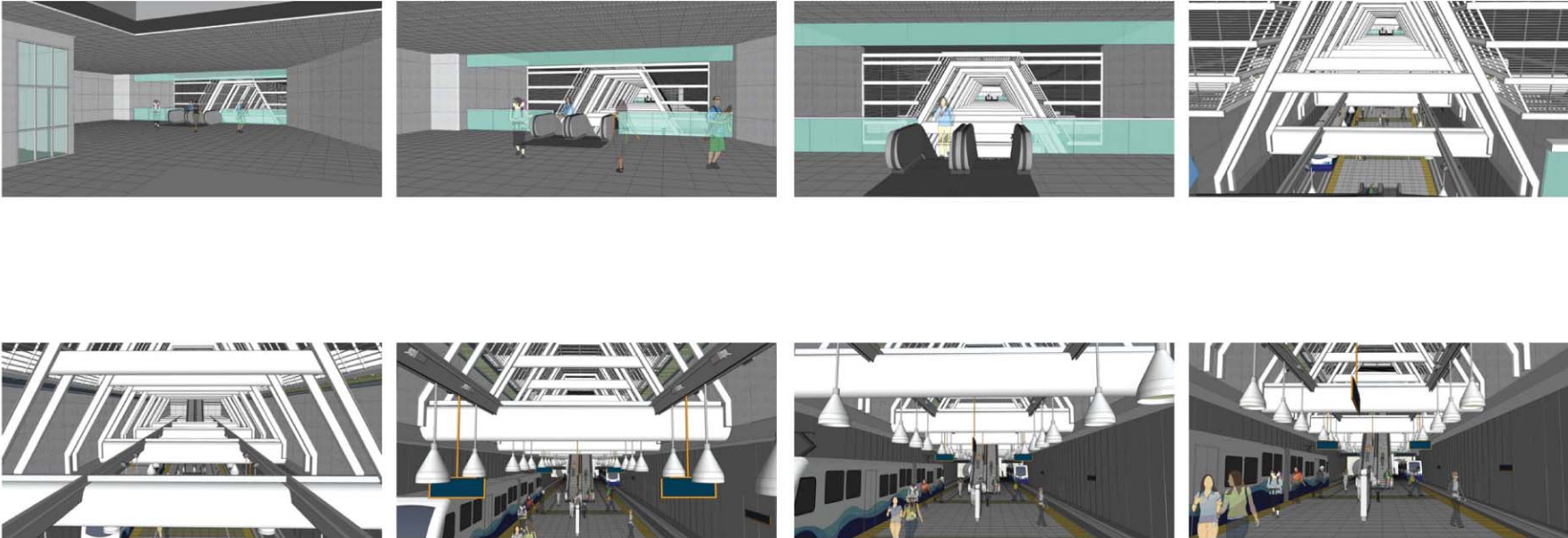


Interior Models - Platform 2

07.2008

Capitol Hill Station

UNIVERSITY LINK

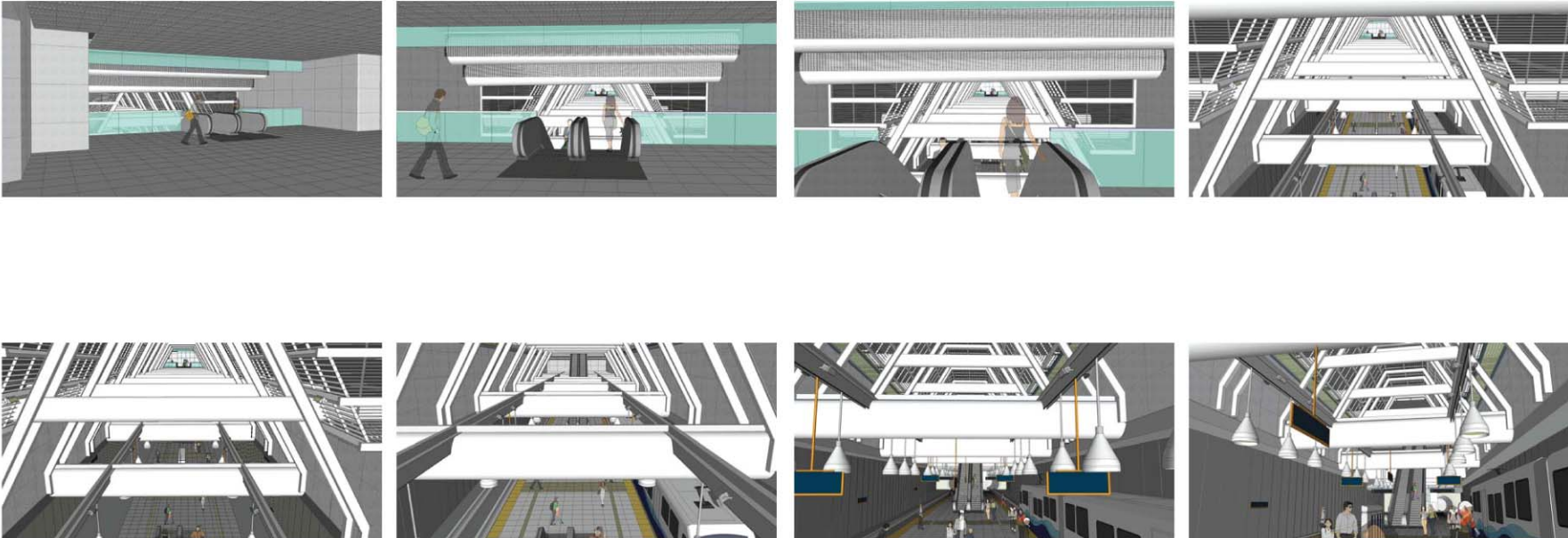


Interior Models - Mezzanine North

07.2008

Capitol Hill Station

UNIVERSITY LINK



Interior Models - Mezzanine South

07.2008

Capitol Hill Station

UNIVERSITY LINK

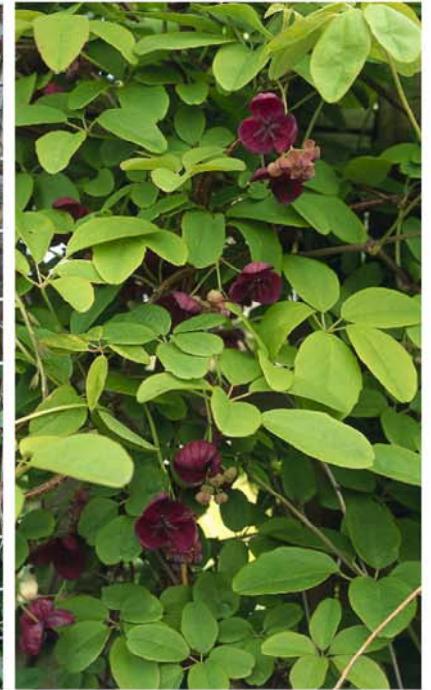


North Exterior Night

07.2008

Capitol Hill Station

UNIVERSITY LINK



07.2008

Capitol Hill Station

UNIVERSITY LINK



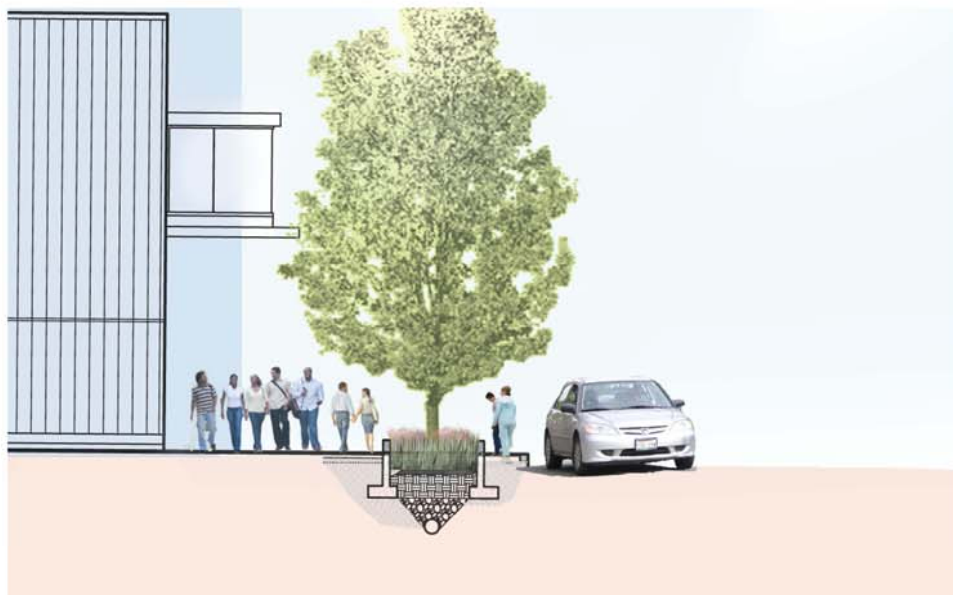
Section - East Denny Way looking South

Scale : 1" = 20'-0"

07.2008

Capitol Hill Station

UNIVERSITY LINK



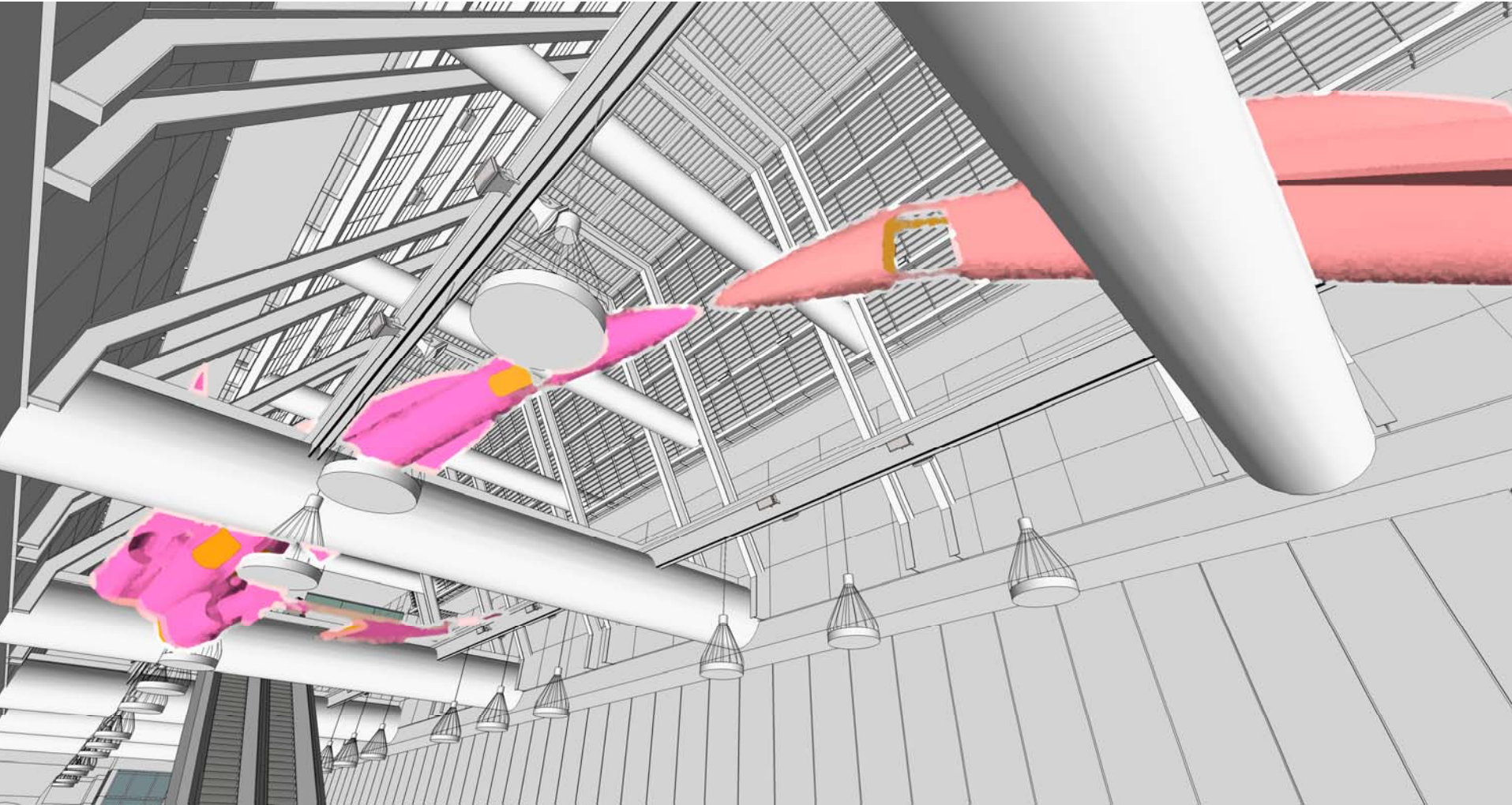
Rain Garden Section - looking West
Scale : NTS

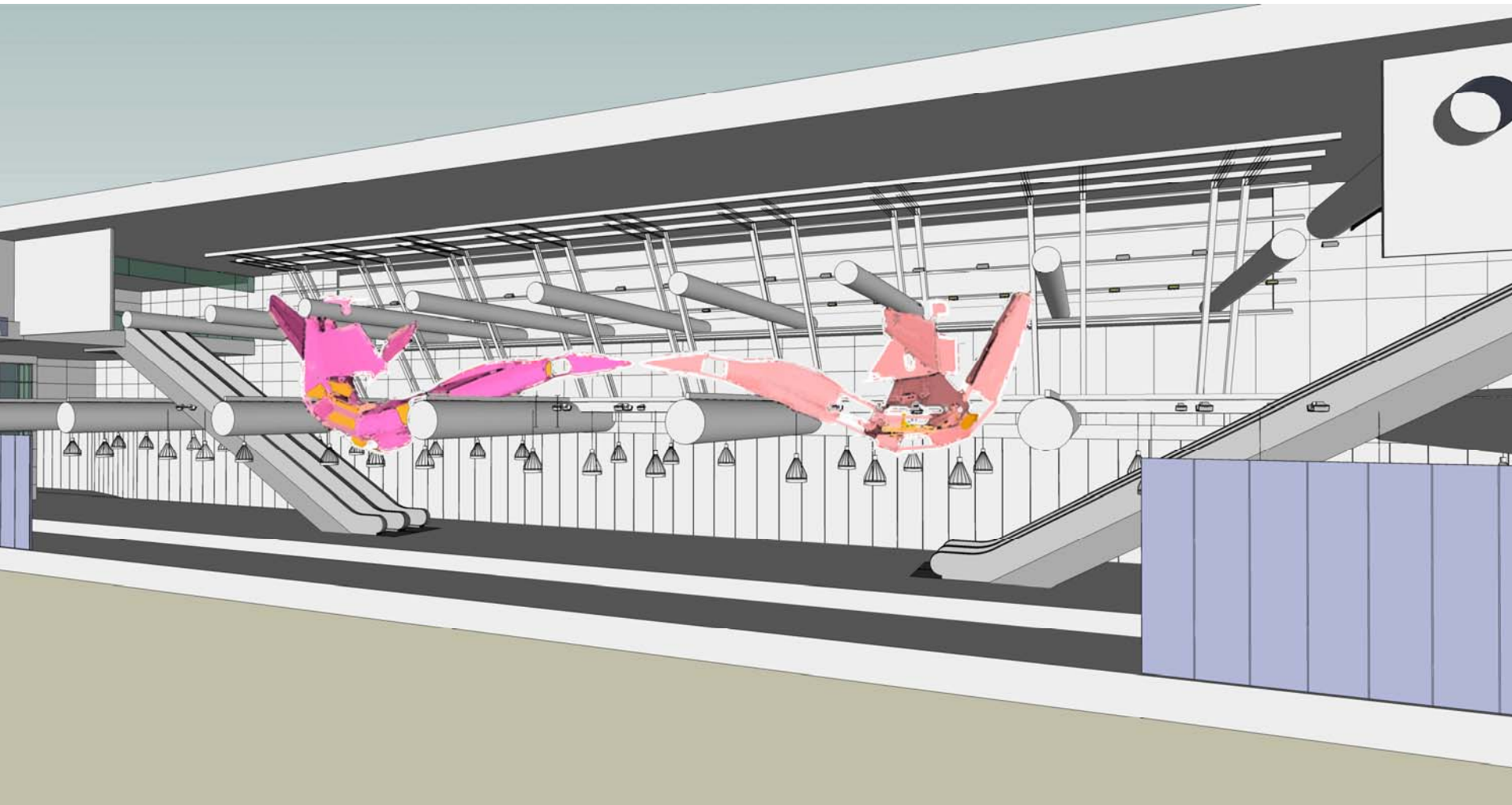
07.2008

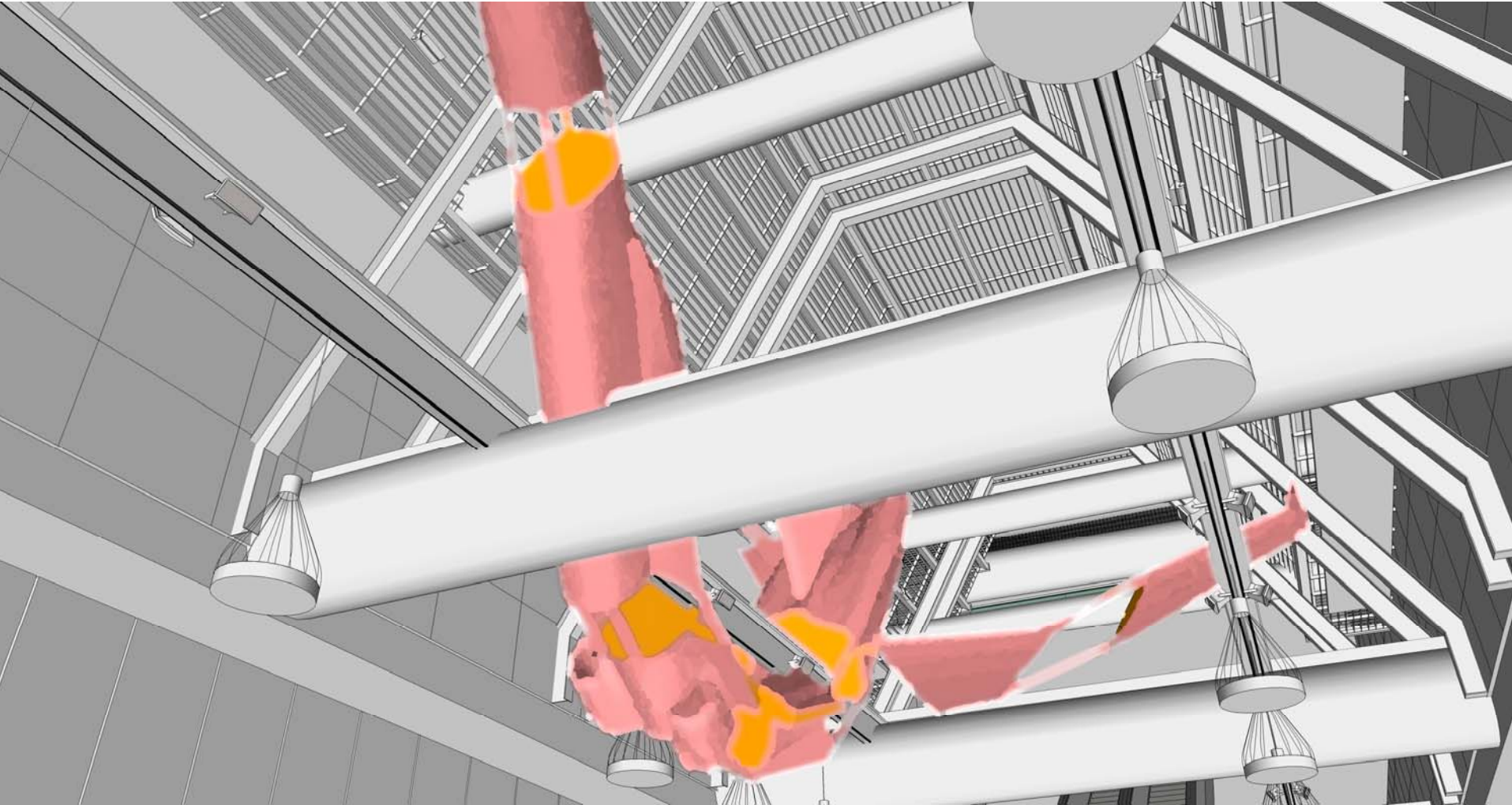
STart - Sound Transit Art Program

Mike Ross



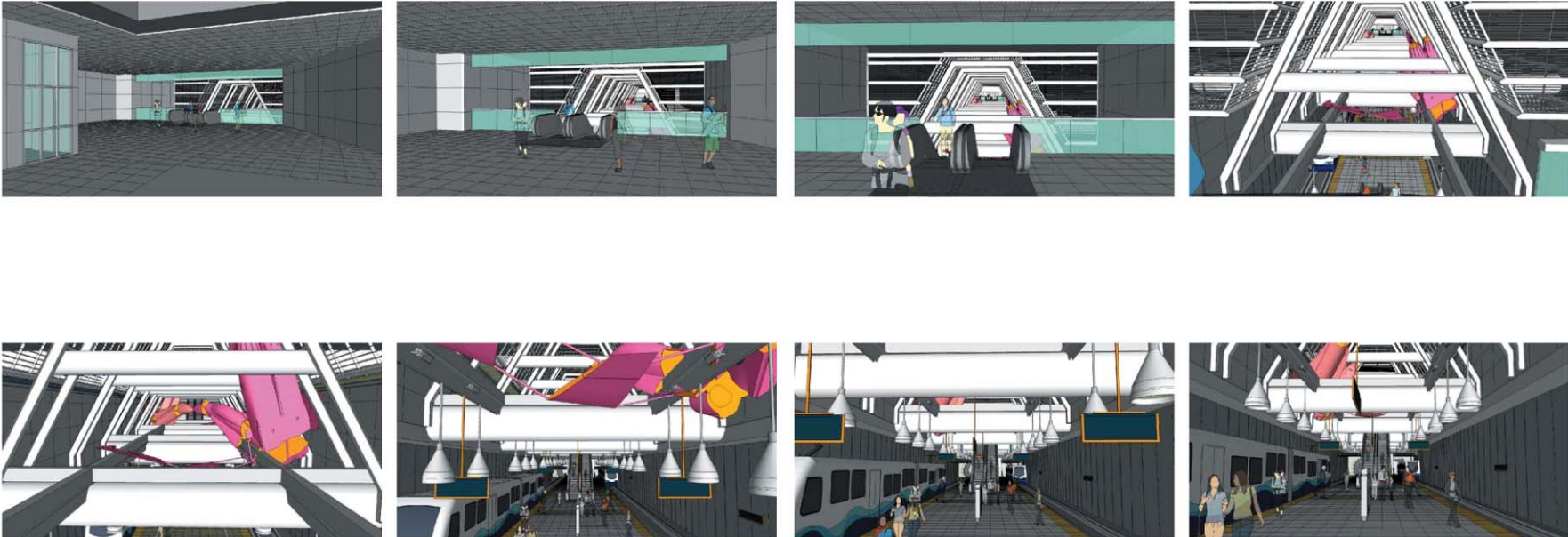






Capitol Hill Station

UNIVERSITY LINK



Interior Models - Mezzanine North

07.2008

