



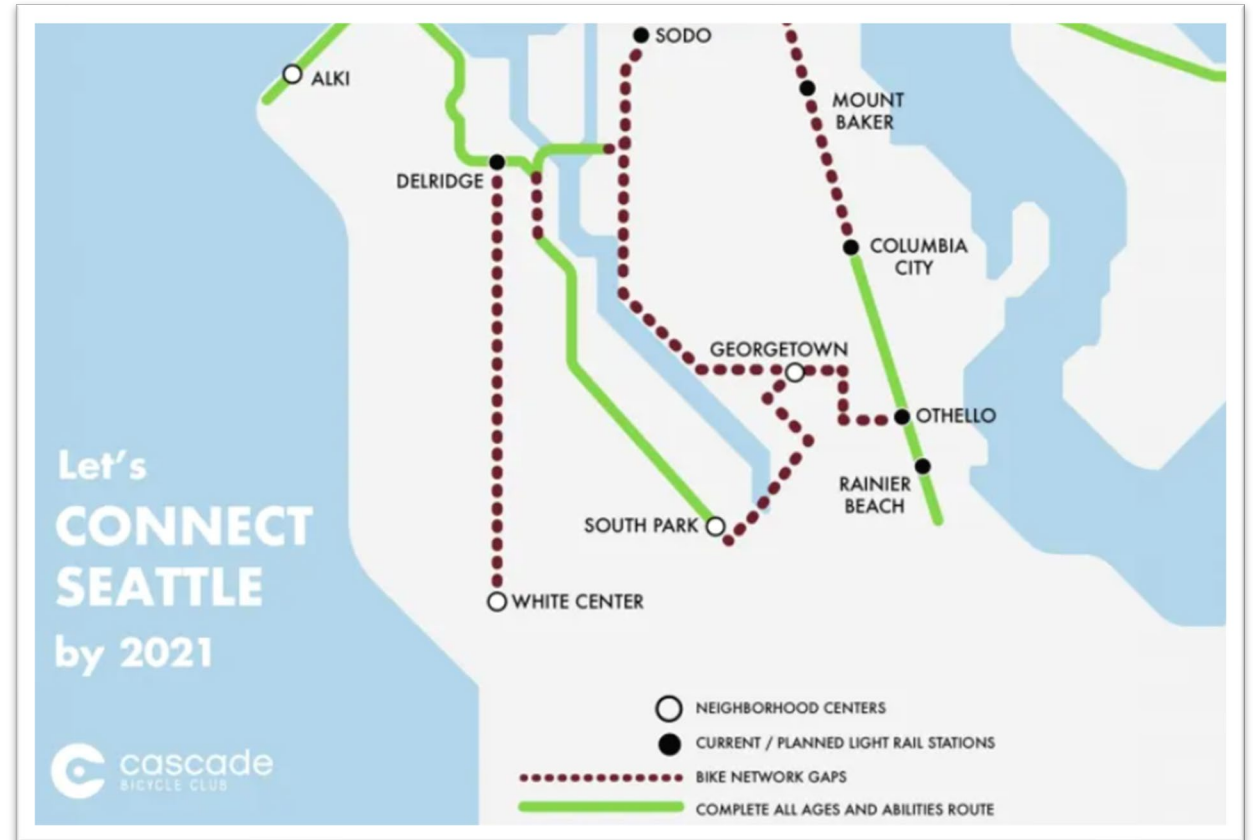
# Georgetown to South Park Trail Project Seattle Design Commission - Concept Design (60%)

Hallie O'Brien, SDOT Project Manager

8/19/2021 Department of Transportation

# Presentation Agenda

- Project Overview
- Previous Comments
- Design (60%)
  - Design Detail
  - Schedule & Budget
- Questions



*(Cascade Bicycle Club)*

# Project Overview

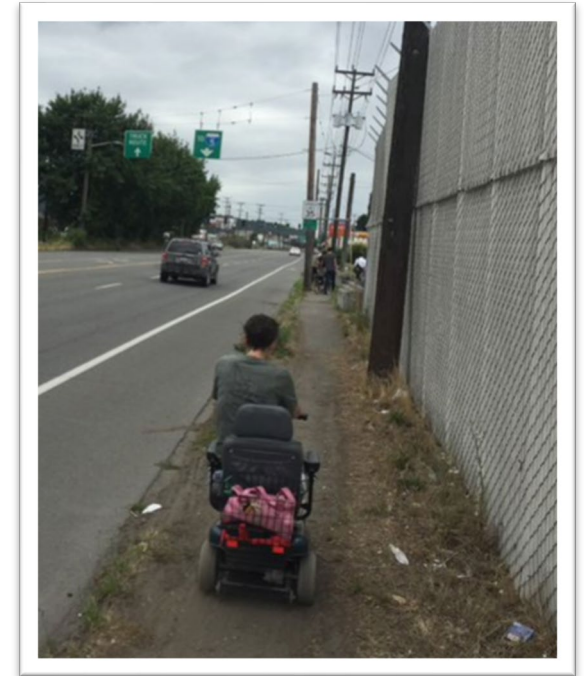


# Project Vision and History

- New all ages and abilities bicycle and pedestrian connection between the Georgetown and South Park communities.
- The Georgetown and South Park Communities have been asking for a walking and biking connection for the past **20 years**.
- November **2020** – Council funded construction for connection for 5.2 million.

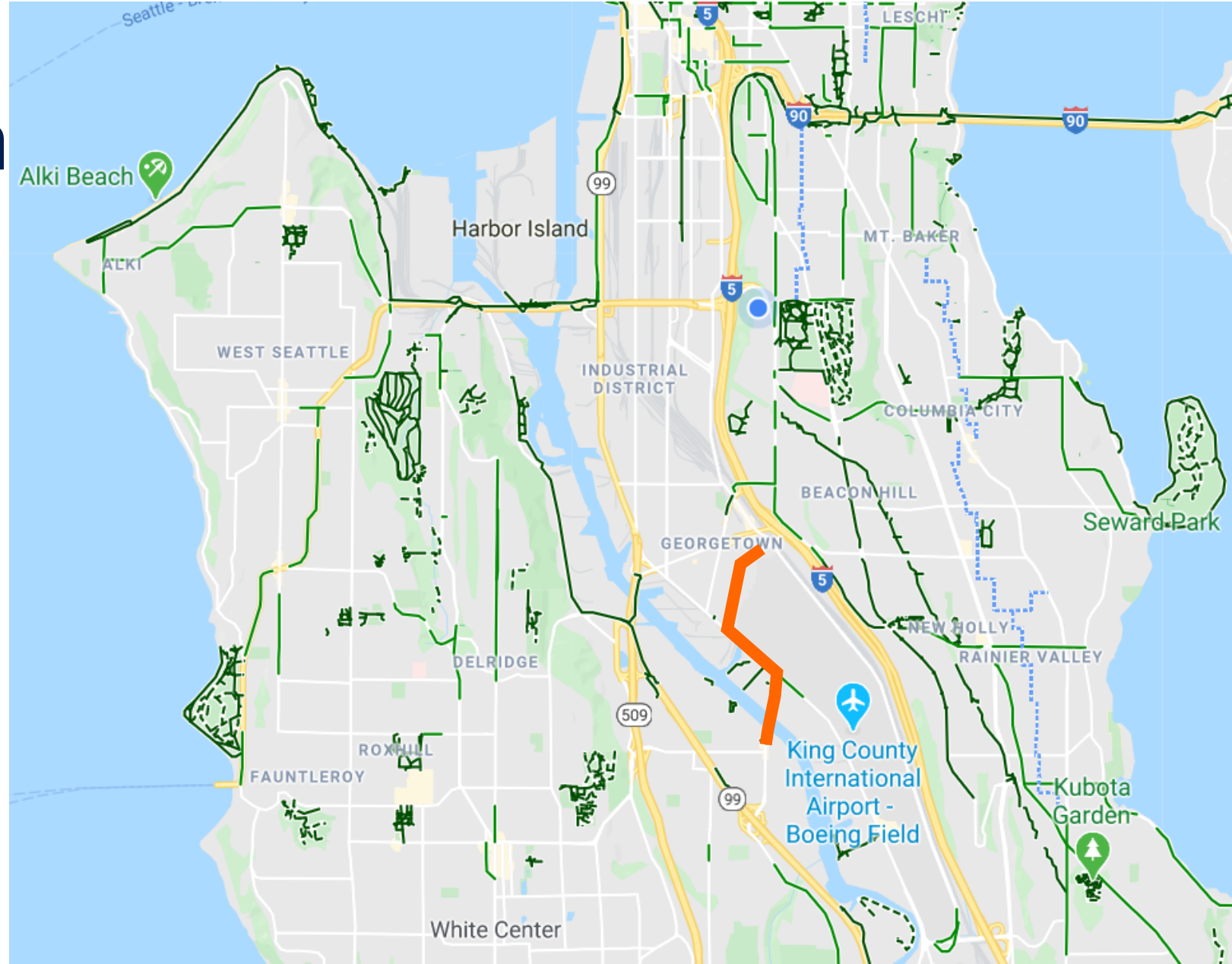


Above: Georgetown festival street  
Right: traveling to Georgetown from South park



# Project Location

- This project site is in the Duwamish Valley and connects the Georgetown and South Park neighborhood centers.



# Community Preferred route



## Georgetown Connection

— Ellis, Albro, 13th: A walking/biking path on Ellis Ave S, S Albro Pl, and 13th Ave S



Existing: Ellis Ave S



Existing: S Albro St



Existing: 13th Ave S

## E Marginal Way S Connection

— North side: A walking/biking path or protected bike lane on the north side of E Marginal Way



Existing: E Marginal Way S

## South Park Connection

— 16th Ave S: One-way protected bike lanes on both sides of 16th Ave S leading to the South Park bridge



Existing: 16th Ave S (north of South Park Bridge)

# Previous Comments

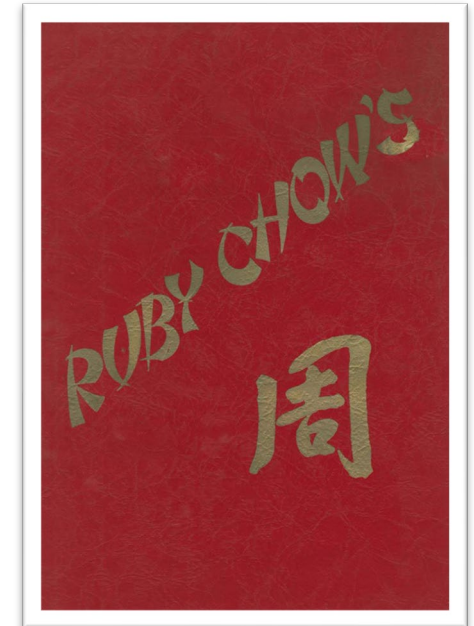
From 4.15.21 Design Commission meeting

# Comment Table

Comment	Design Update	Addressed
1. lighting, pathway materials, etc.	New lighting, crossing markings	●
2. Explore providing art elements, such as sculptures, and noise mitigation along the stretch of East Marginal Way S	Possible location identified at triangle next to Ruby Chow Park. New plantings and preserving trees along E Marginal way.	●
3. safety measures for potential conflicts between cyclists and pedestrians. measures such as paving patterns or different materials to reduce potential conflicts	Concrete pavement at bus stops for visual "mixing zone" cue.	●



*(Ruby Chow's restaurant, February 23, 1967)*



*(Ruby Chow's menu, ca.1955MOHI)*



# Comment Table



*(Example of green cross bike markings)*

Comment	Design Update	Addressed
4. Show how cyclist and pedestrians interact with vehicles at intersections and driveways	Crosswalk markings and potential flashing signs in front of the fire station.	●
5. Explore opportunities to provide a connection south of the South Park Bridge with specific focus given to the southern approach to the bridge;	Working with Reconnect West Seattle program to build spot improvements along 14 <sup>th</sup> and the intersection of 14 <sup>th</sup> and Dallas	●
6. Maximize creating spaces along the trail, including the provision of open spaces and viewpoints at specific locations along the trail and trail head.	Coordinating 1% for art and will have more details at 90%	●

# Comment Table

Comment	Design Update	Addressed
7. Continue interdepartmental coordination with SPU, City Light and other City departments as the project develops	Working closely with SCL/SPR/SPU on flume and trail connection.	●
8. SDOT continue to serve as the project lead, specifically in advocating for the community as the design continues to develop	Working with community on art, king county airport, ect.	●



*(Flume site plan June 2020)*

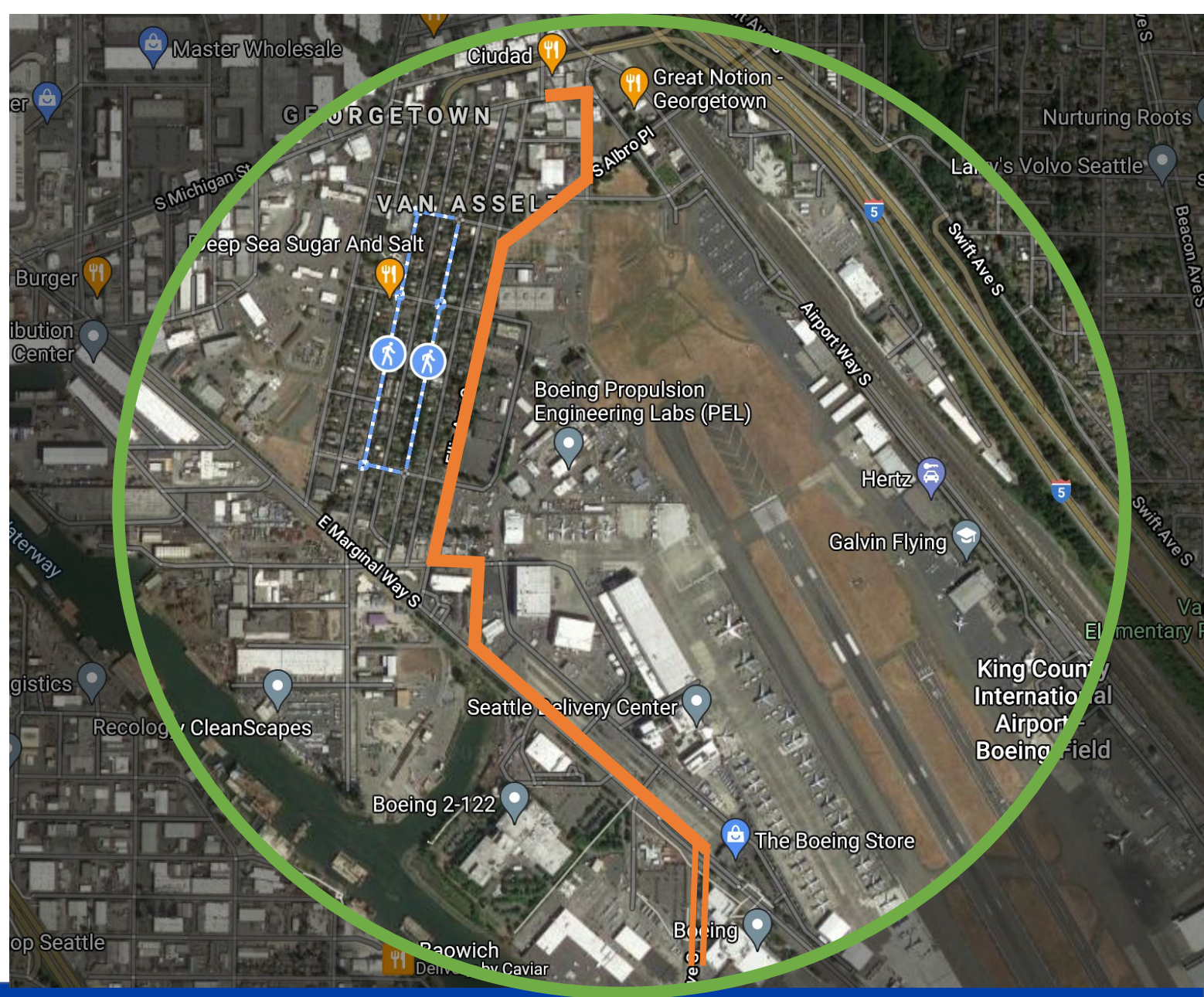
# Concept Design (60%)

# Design

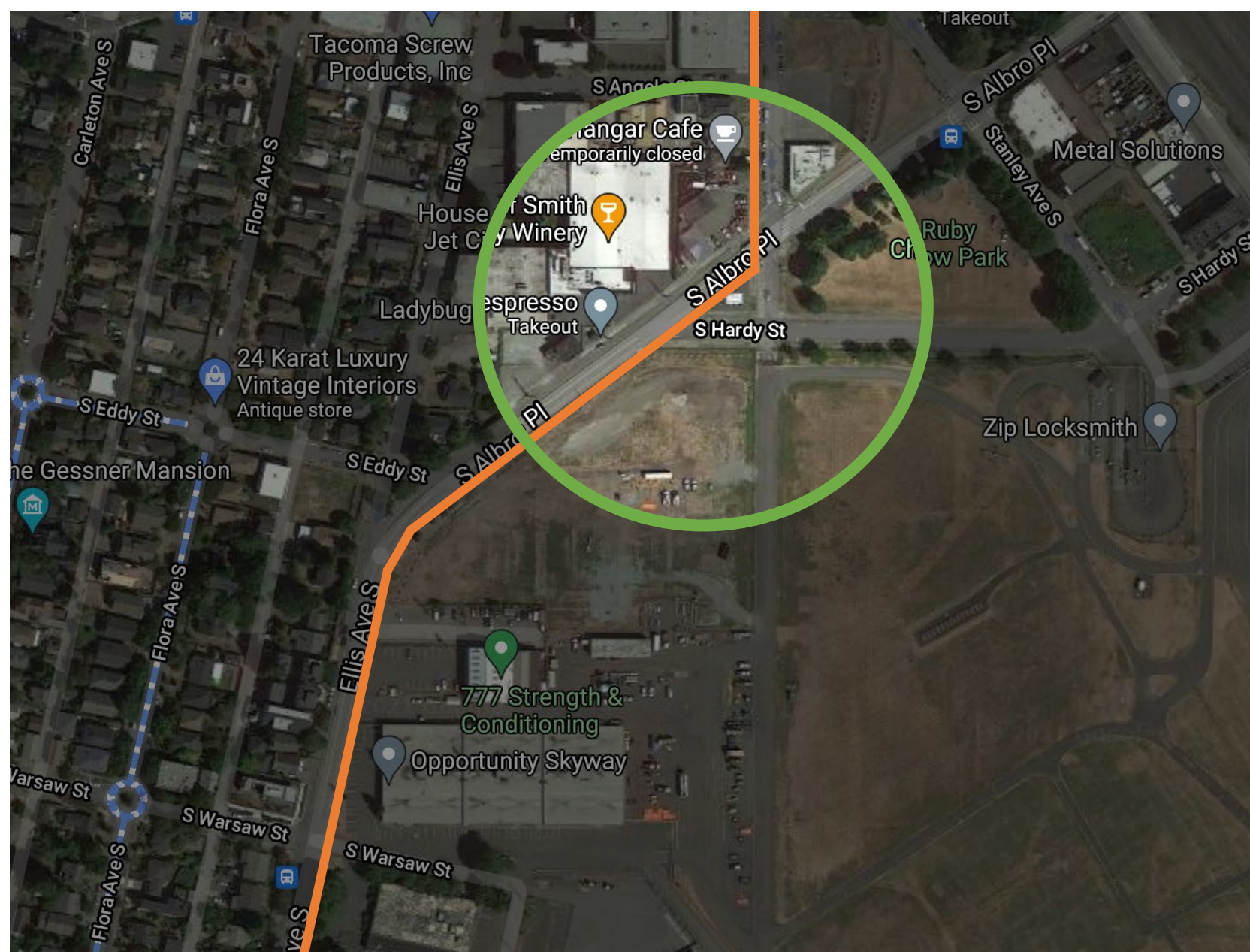


- Shared use path
- Most protection from cars with curb height separation.
- Width varies 10-12 feet throughout the trail
- Trees - **Athena Classic Elm**  
Spaced at 35'  
grow to ~30 ft spread about 35'

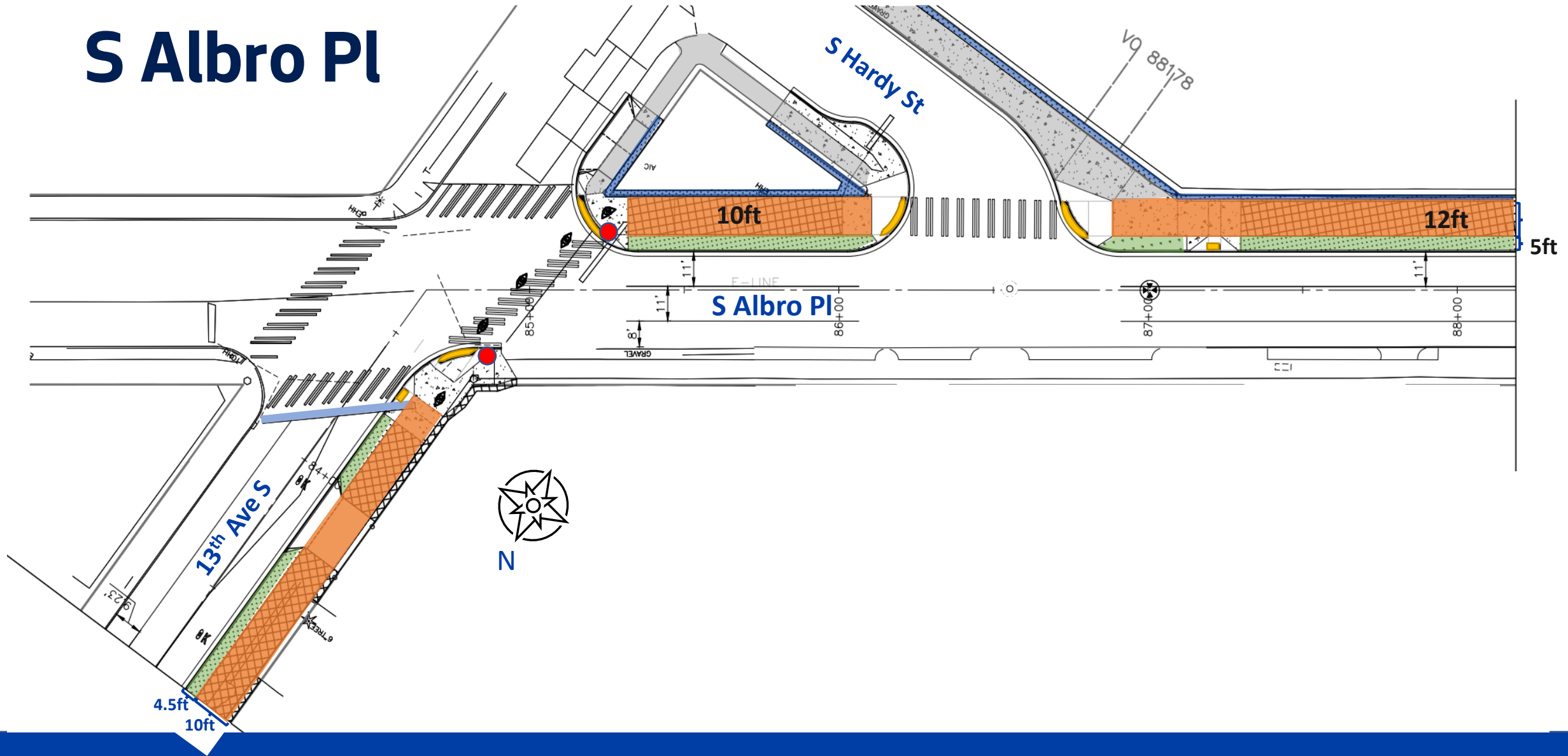
# Design



# S Albro Pl



# S Albro Pl

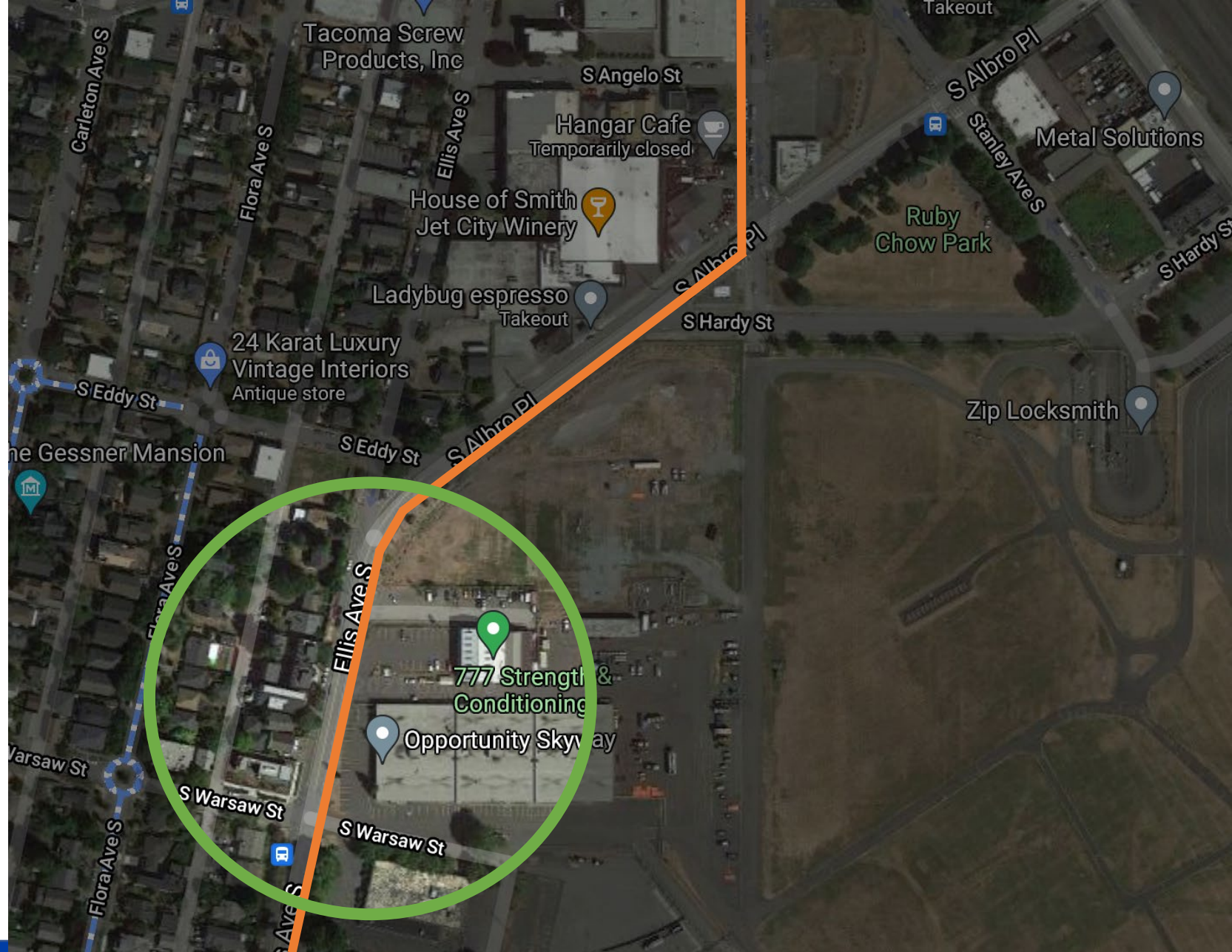


# S Albro Pl

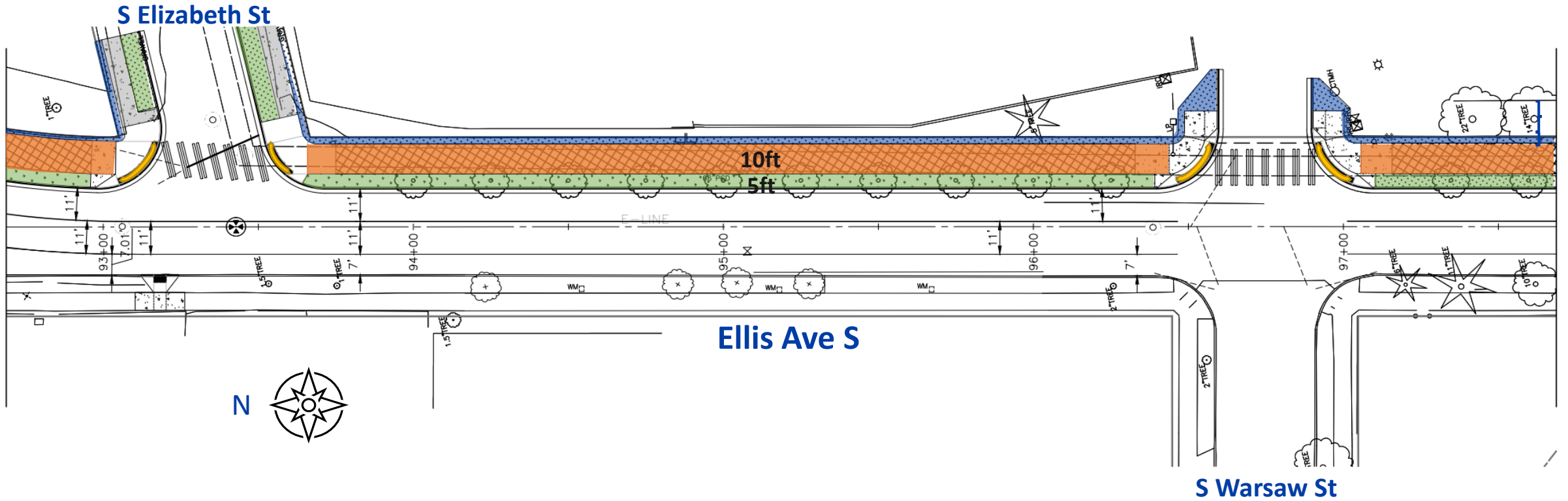




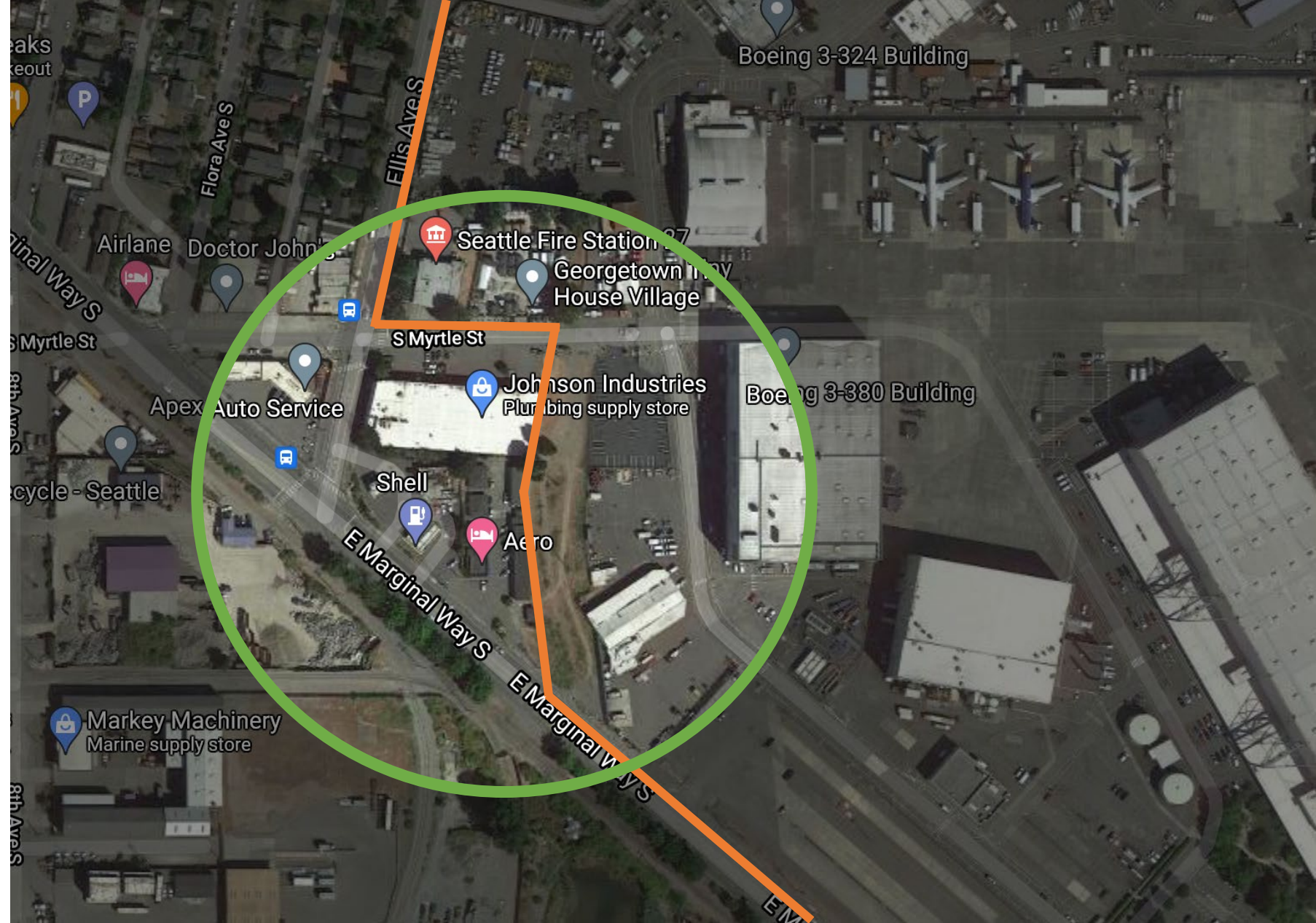
# Ellis Ave S



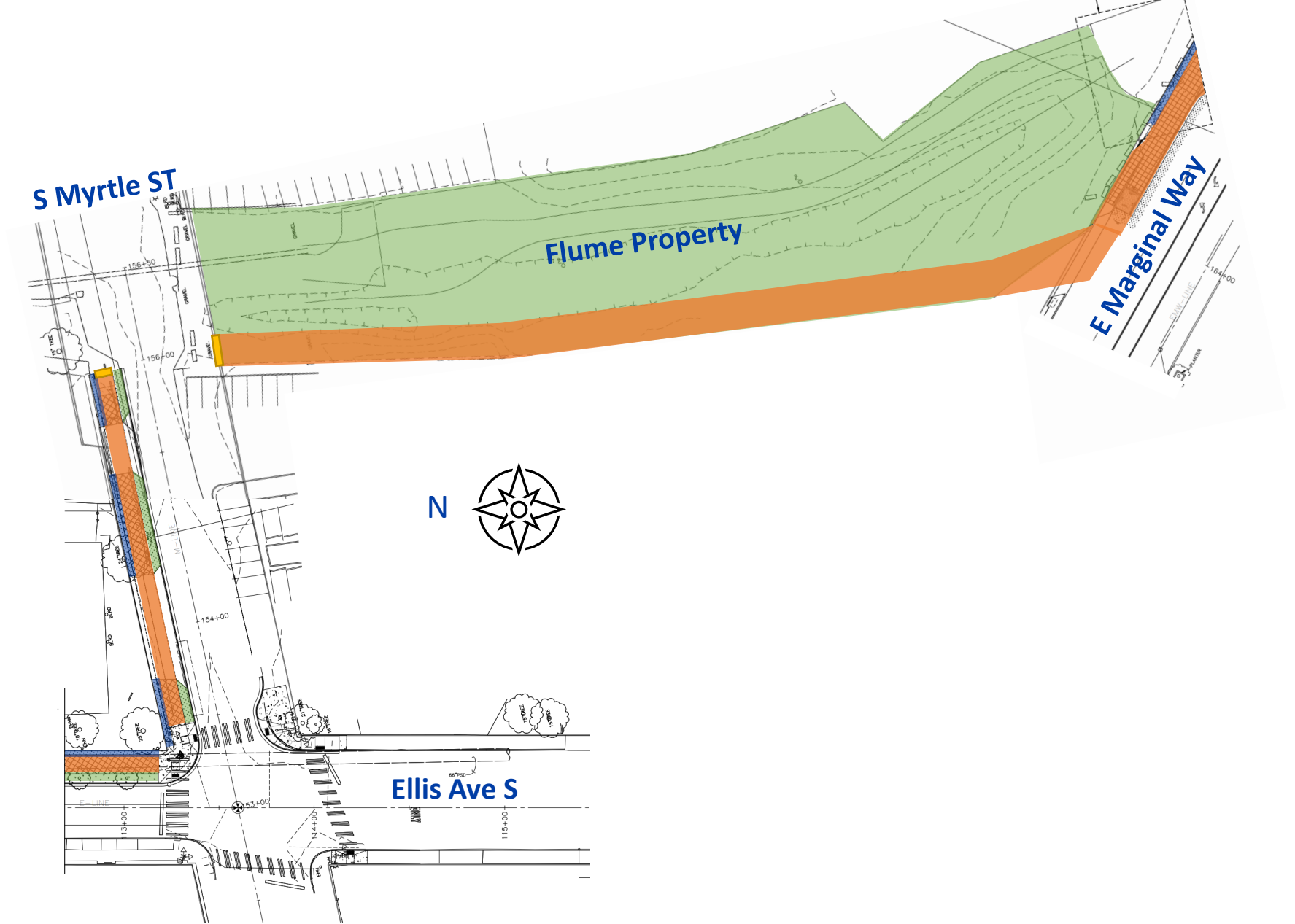
# Ellis Ave S



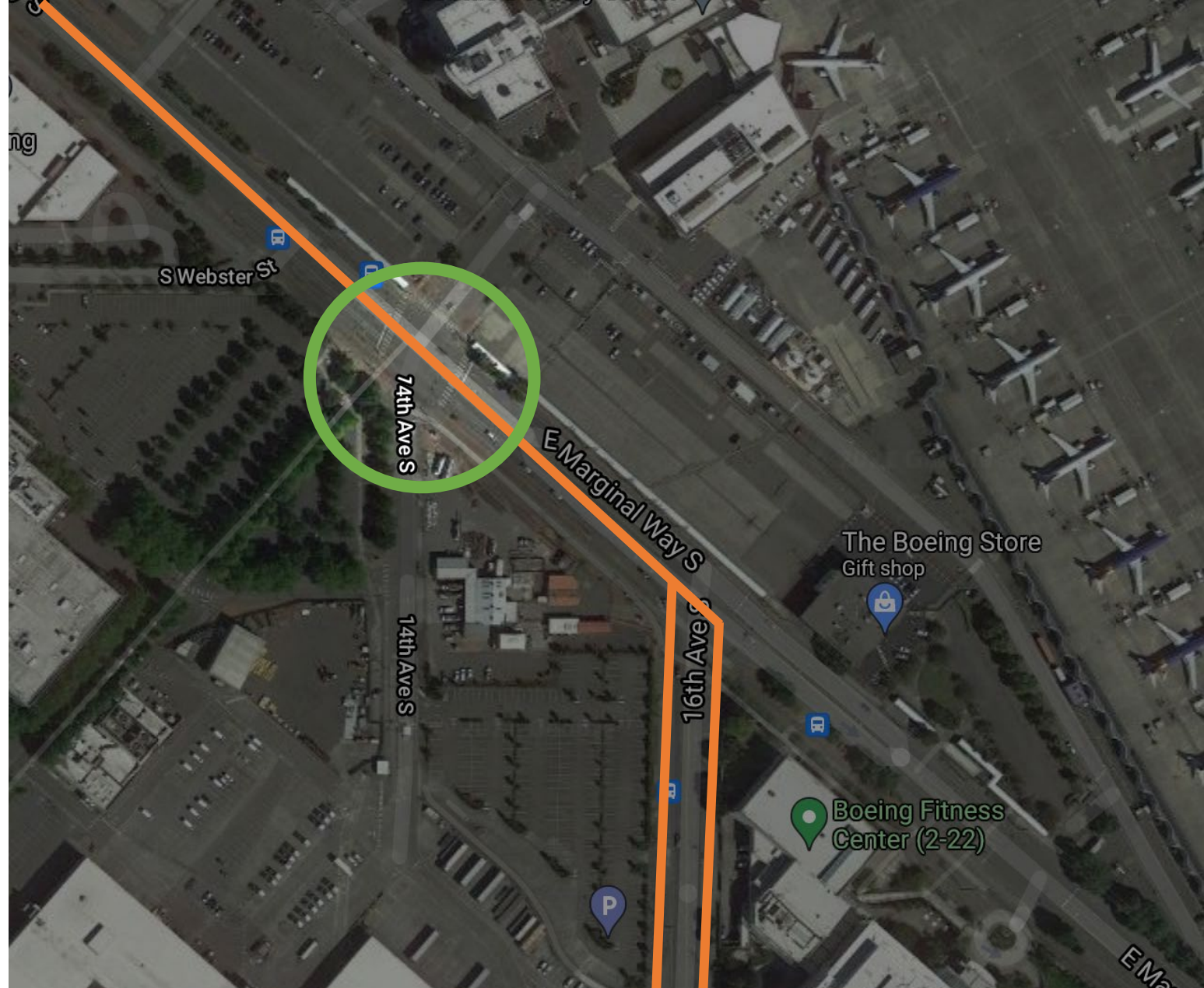
# Flume Property

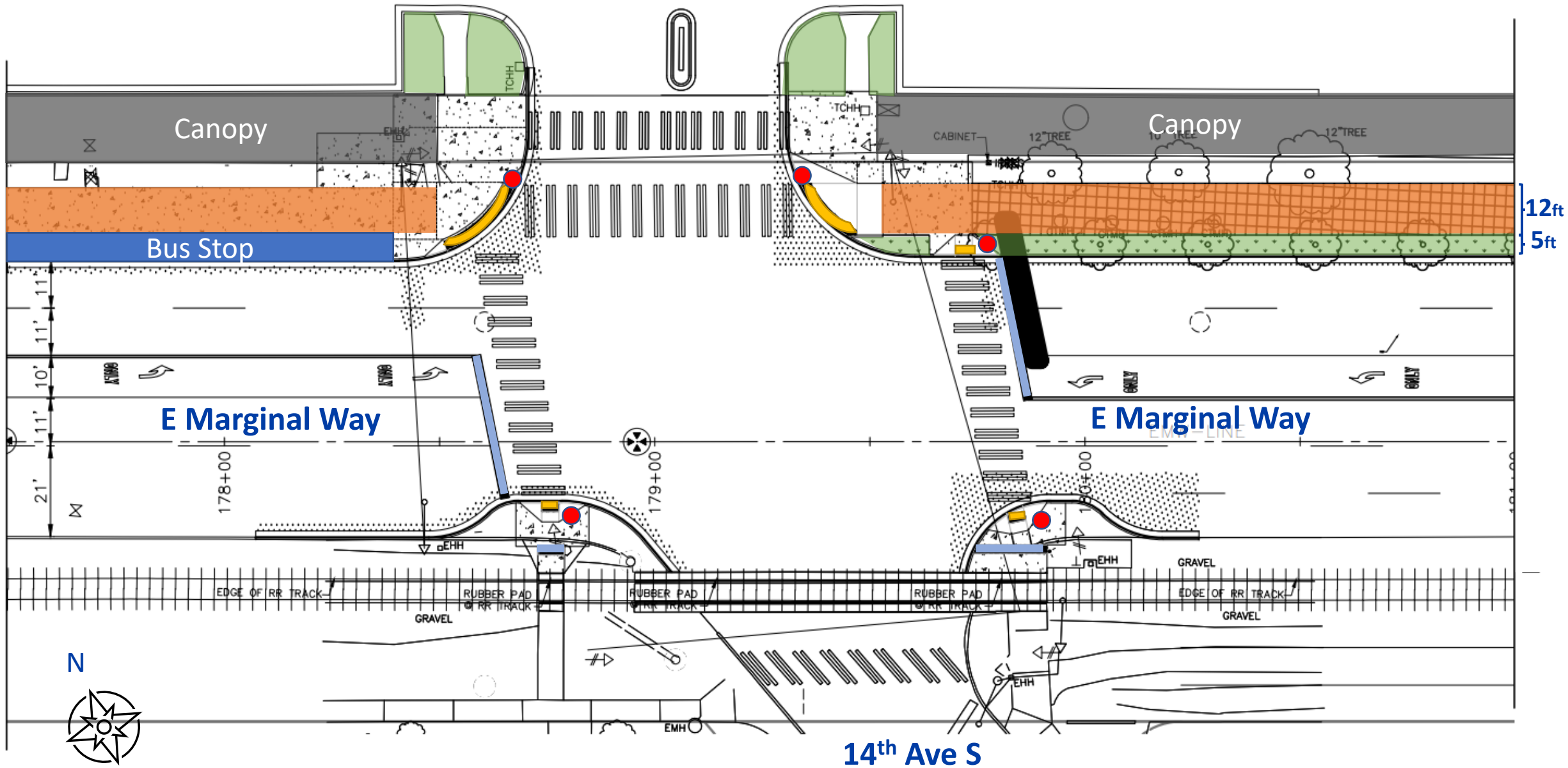


# Flume Property



# E Marginal Way and 14<sup>th</sup> Ave S

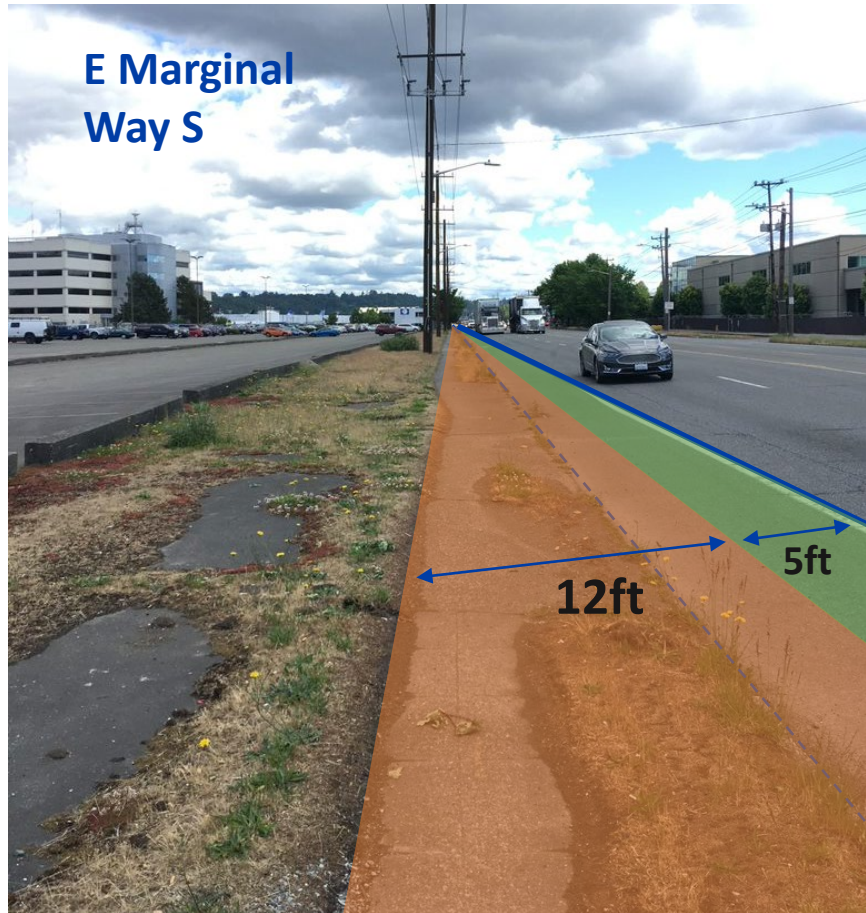




# East Marginal - existing trees



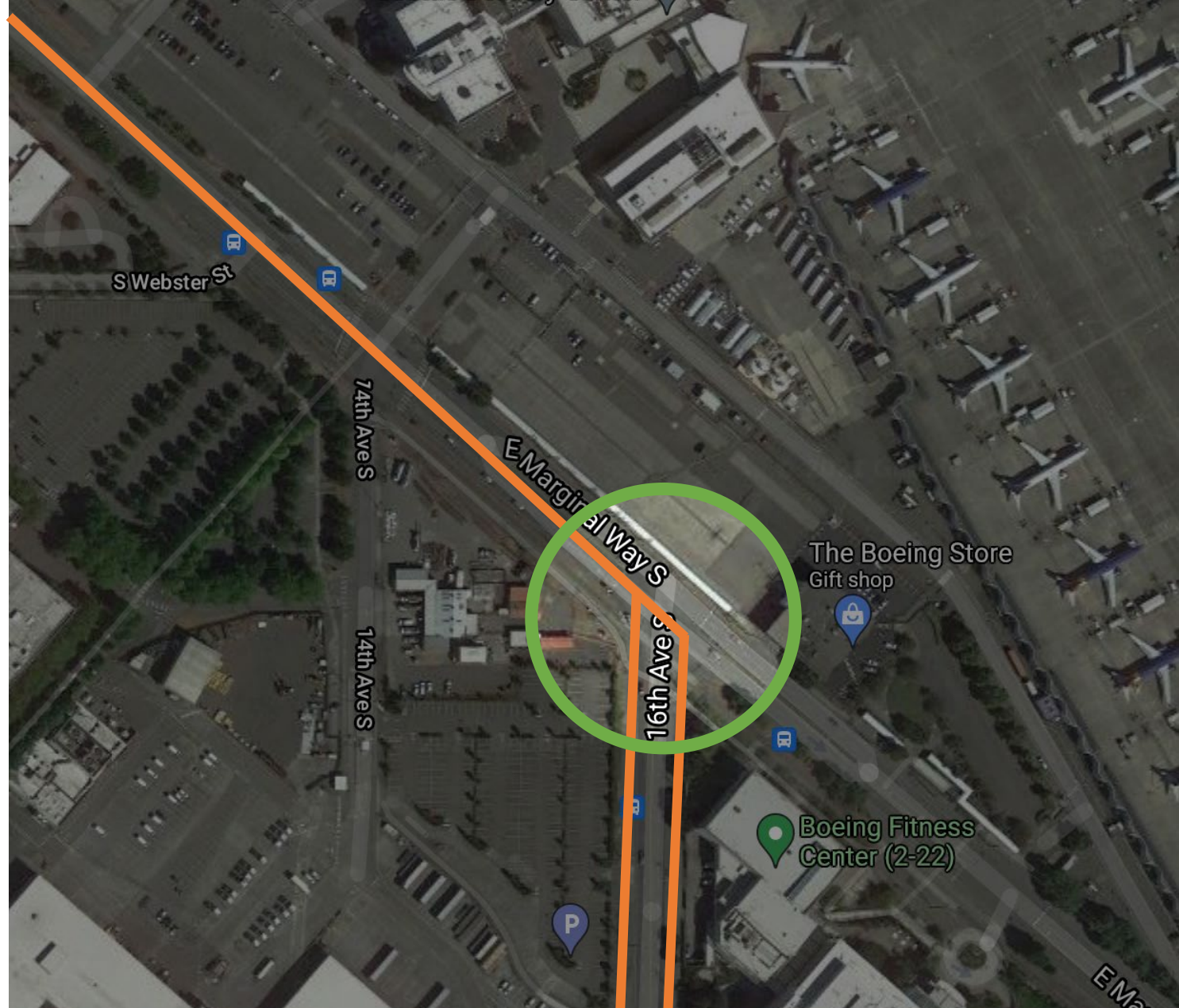
# East Marginal



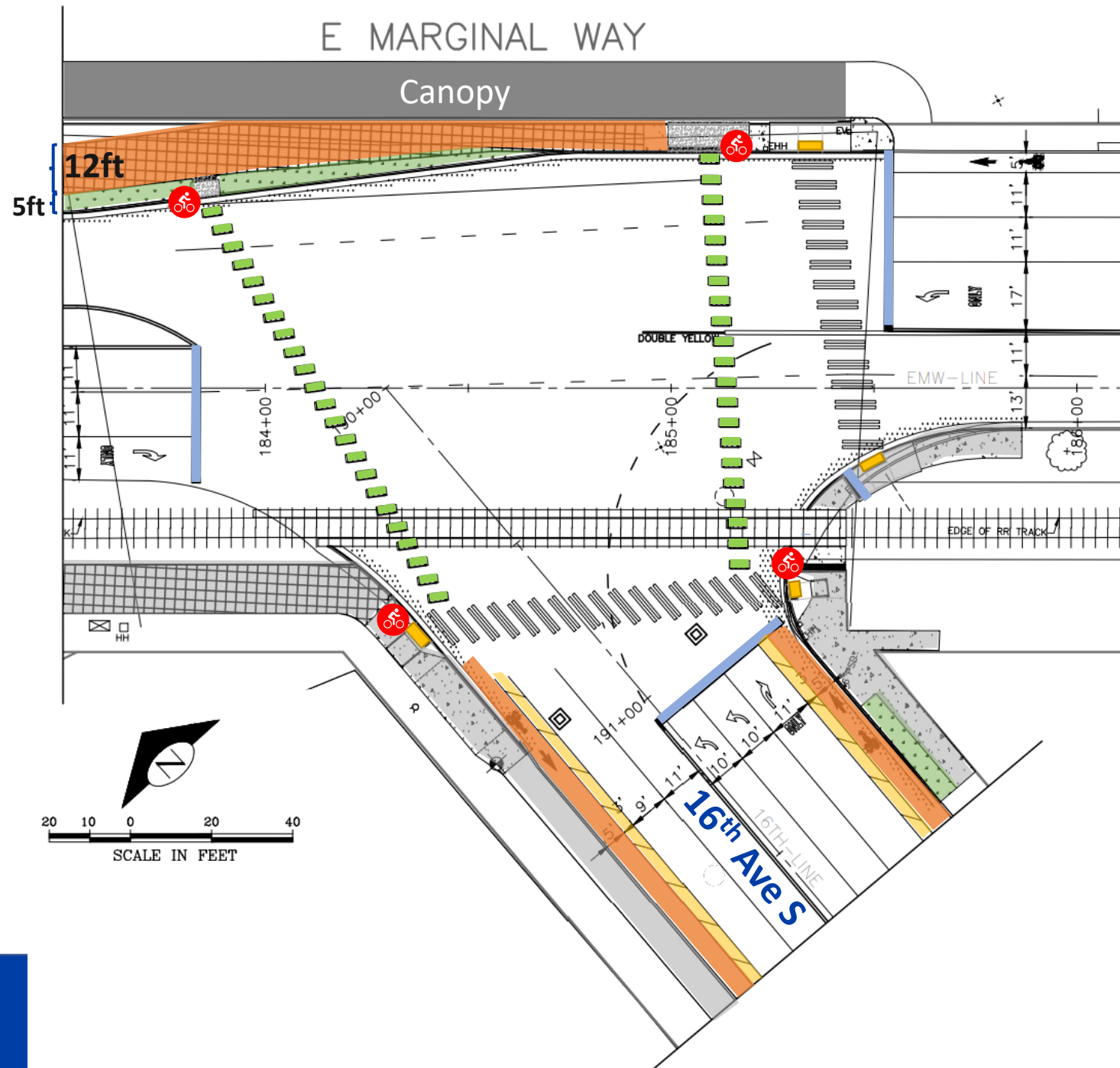


# East Marginal and 16<sup>th</sup> Ave S

Connection to South Park Bridge



# East Marginal and 16<sup>th</sup> Ave S



# Questions?



**Hallie O'Brien**

**(206) 727-3581**

**[Hallie.OBrien@seattle.gov](mailto:Hallie.OBrien@seattle.gov)**

# Flume Property

- Joint project with Seattle Parks and Recreations Off-Leash Area

- Design elements

- Lighting
- Benches
- Bike Racks



### Georgetown Connection

Ellis, Albro, 13th: A walking/biking path on Ellis Ave S, S Albro Pl, and 13th Ave S



Existing: Ellis Ave S



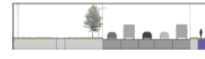
Existing: S Albro St



Existing: 13th Ave S

### E Marginal Way S Connection

North side: A walking/biking path or protected bike lane on the north side of E Marginal Way



Existing: E Marginal Way S

### South Park Connection

16th Ave S: One-way protected bike lanes on both sides of 16th Ave S leading to the South Park bridge



Existing: 16th Ave S (north of South Park Bridge)



fully funded