

Burke-Gilman Trail Missing Link



The Levy to
MOVE SEATTLE


Seattle Design Commission (60% Update)
Louisa Galassini, SDOT Project Manager
October 19, 2017



Seattle
Department of
Transportation

SDOT's Mission And Vision

Mission: Deliver a high-quality transportation system for Seattle

Vision: connected people, places, and products

Committed to **5 core values** to create a city that is:

- Safe
- Interconnected
- Affordable
- Vibrant
- Innovative

For **all**

Agenda

- **Outreach**
- **60% Design**
 - NW 54th / Market St
 - Shilshole
 - NW 45th
 - Full Corridor
- **Next Steps**
- **Questions**

OUTREACH

Outreach

MAY 2017

S	M	T	W	T	F	S
	1	2	3	4	5	6
7	8	9	10	11	12	13
14	15	16	17	18	19	20
21	22	23	24	25	26	27
28	29	30	31			

JUNE

S	M	T	W	T	F	S
				1	2	3
4	5	6	7	8	9	10
11	12	13	14	15	16	17
18	19	20	21	22	23	24
25	26	27	28	29	30	

JULY

S	M	T	W	T	F	S
						1
2	3	4	5	6	7	8
9	10	11	12	13	14	15
16	17	18	19	20	21	22
23	24	25	26	27	28	29
30	31					

AUGUST

S	M	T	W	T	F	S
		1	2	3	4	5
6	7	8	9	10	11	12
13	14	15	16	17	18	19
20	21	22	23	24	25	26
27	28	29	30	31		

SEPTEMBER

S	M	T	W	T	F	S
					1	2
3	4	5	6	7	8	9
10	11	12	13	14	15	16
17	18	19	20	21	22	23
24	25	26	27	28	29	30

OCTOBER

S	M	T	W	T	F	S
1	2	3	4	5	6	7
8	9	10	11	12	13	14
15	16	17	18	19	20	21
22	23	24	25	26	27	28
29	30	31				

LEGEND

DAC meetings

- 5/4 DAC Meeting #1
- 5/25 DAC Meeting #2
- 6/14 DAC Walking Tour
- 6/15 DAC Meeting #3
- 7/27 DAC Meeting #4
- 8/17 DAC Meeting #5
- 9/28 DAC Meeting #6
- 10/2 DAC Field Test
- 10/26 DAC Meeting #7

Workshops/Briefings

- 6/14 Ballard District Council Briefing
- 6/27 NW Market St Segment Workshop
- 6/29 Shilshole Ave NW Segment Workshop
- 7/11 45th St NW Segment Workshop
- 8/3 Industrial Community Workshop
- 8/3 Seattle Design Commission (30%)
- 8/10 Ballard Ave Landmark District Board Briefing
- 9/28 All Segment Workshop
- 10/5 Ballard Alliance Briefing
- 10/11 Seattle Pedestrian Advisory Board Briefing
- 10/17 Seattle Freight Advisory Board Briefing
- 10/19 Seattle Design Commission (60%)

Public events

- 6/25 Ballard Farmer's Market
- 7/8-7/9 Ballard Seafood Fest
- 7/13 Open House #1
- 10/1 Ballard Farmer's Market
- 10/12 Open House #2
- 10/14 Self-guided Public Walking Tour

Online open houses

- 7/10-7/23 (Share pre-30% design)
- 10/9-10/23 (Share 60% design)

60% DESIGN

SEGMENT 1

NW 54TH & MARKET ST

Segment 1

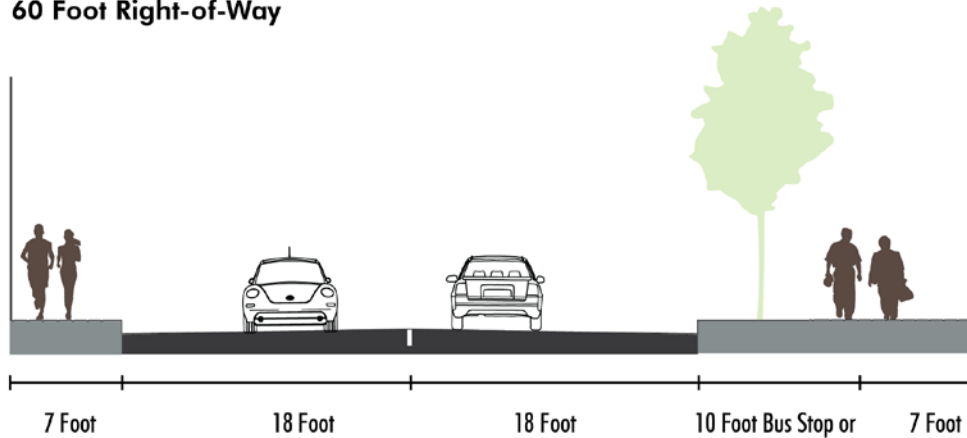


Existing (NW 54th)

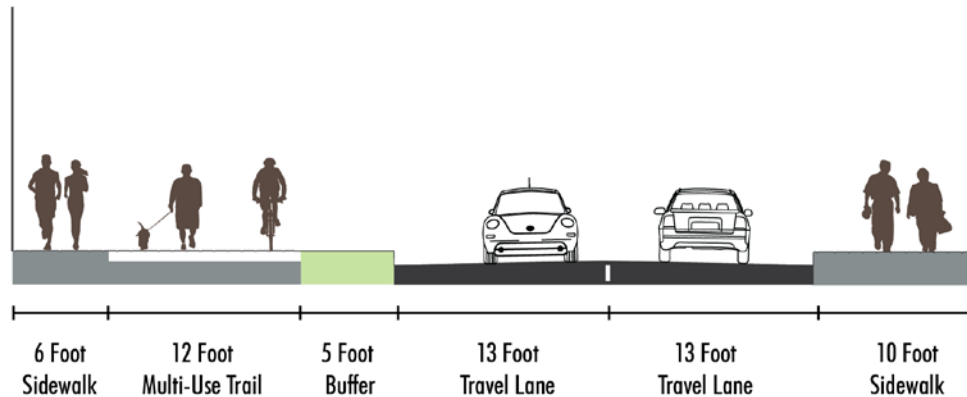


NW 54th - Section

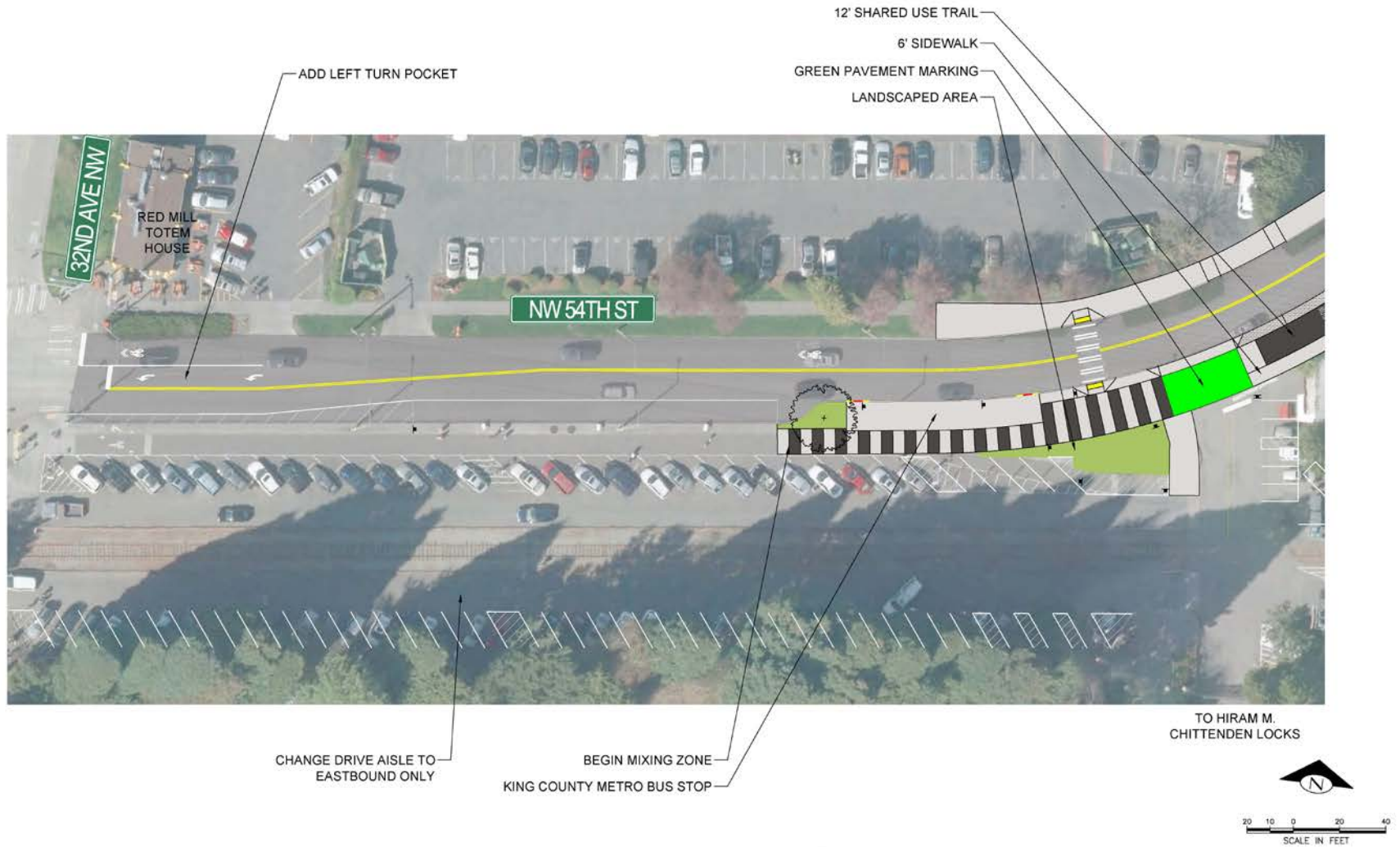
Existing Conditions
NW 54th St Cross Section
60 Foot Right-of-Way



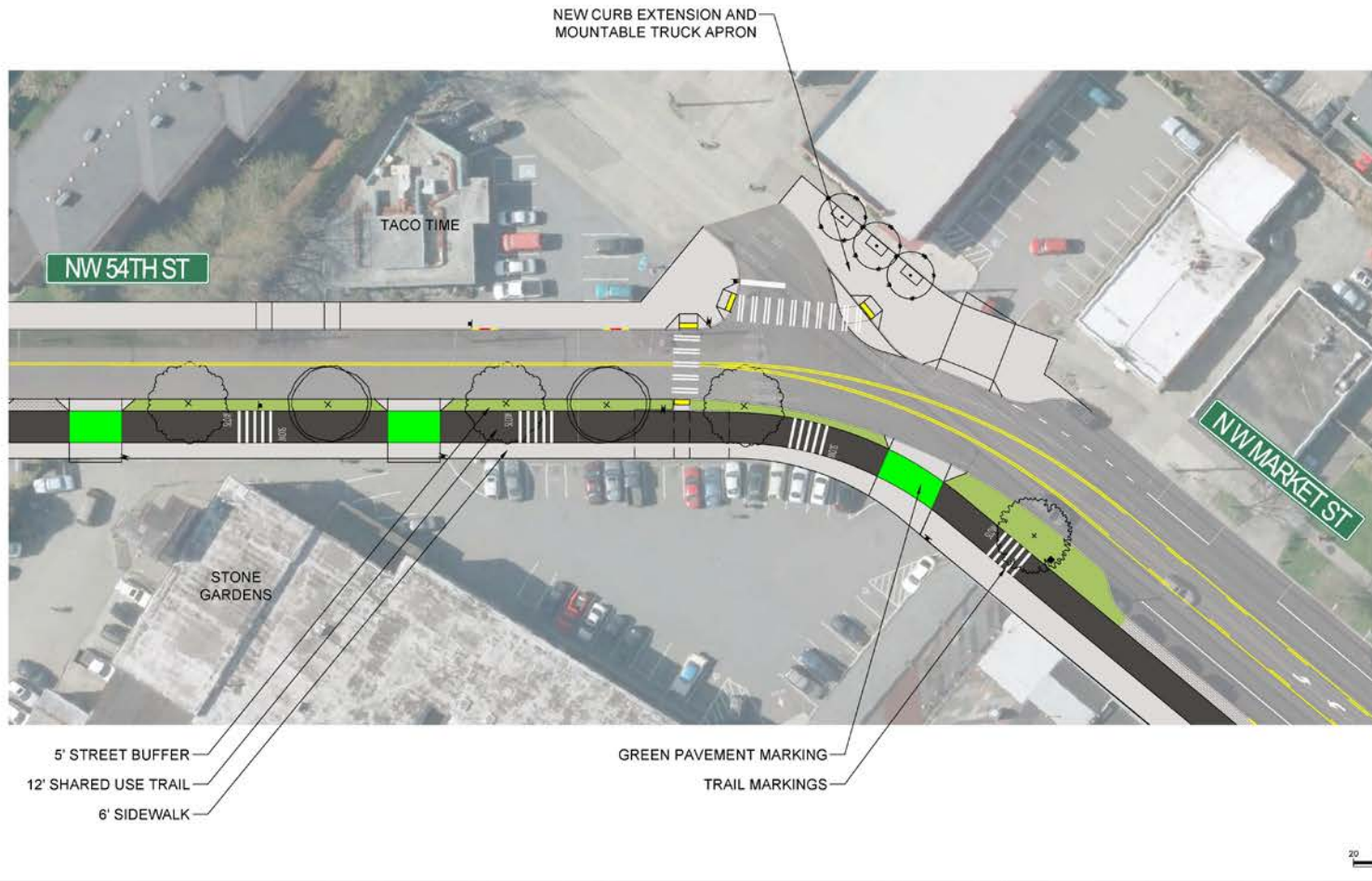
Missing Link Proposed Condition
NW 54th St Cross Section
60 Foot Right-of-Way



NW 54th (Ballard Locks)



NW 54th / Market St

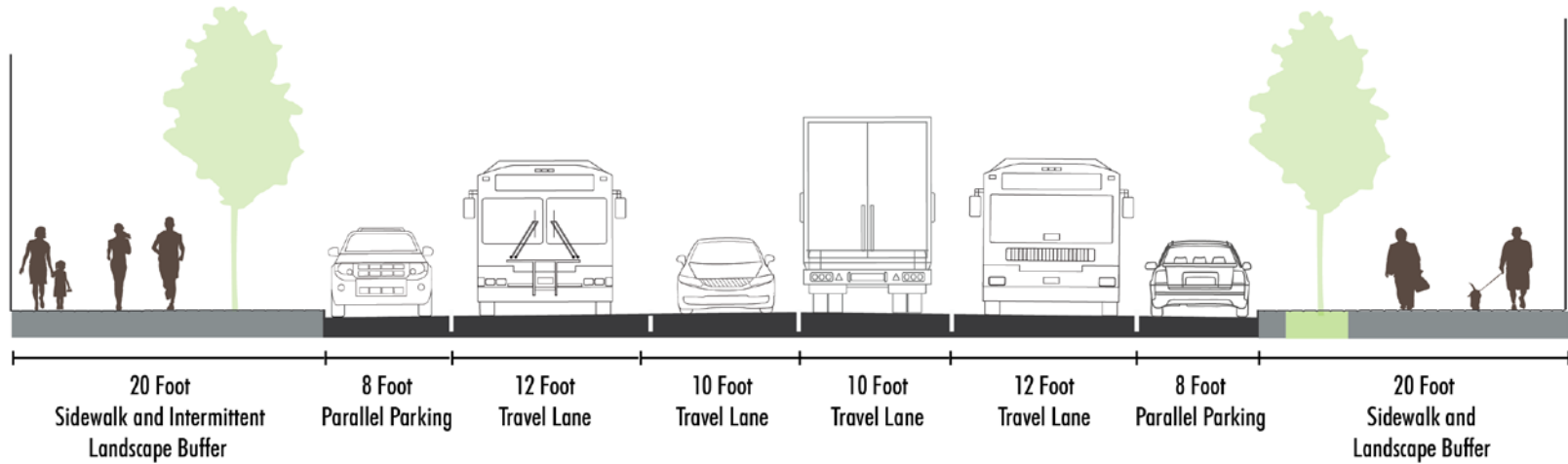


Existing (Market St)

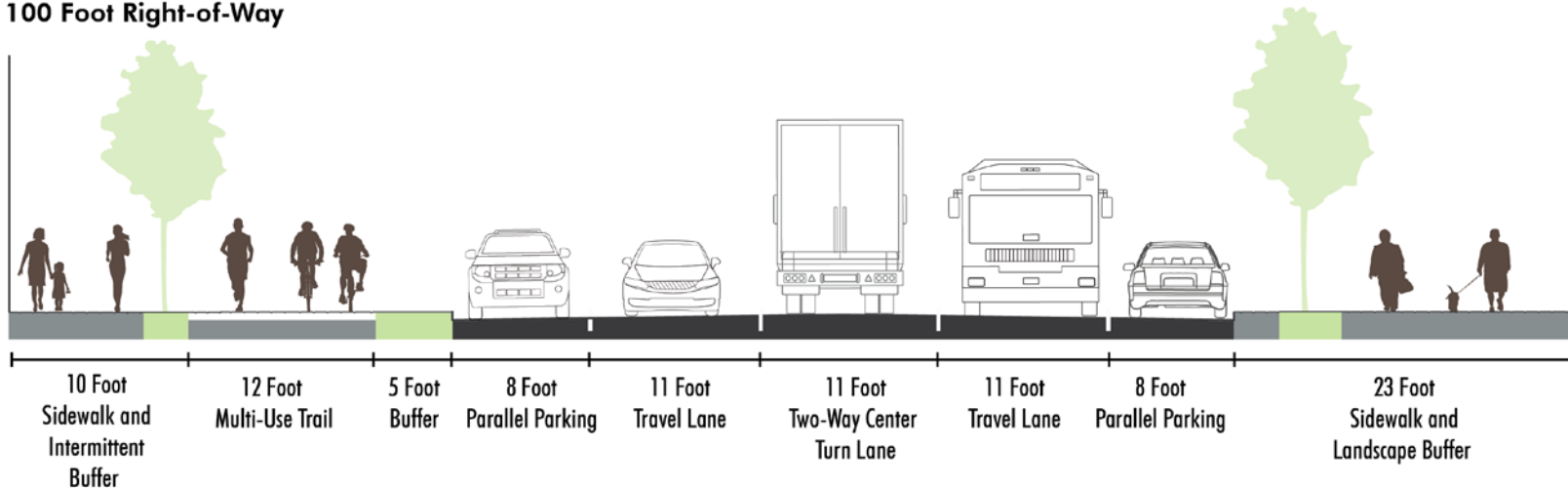


Market St - Section

Existing Conditions
NW Market St Cross Section
100 Foot Right-of-Way



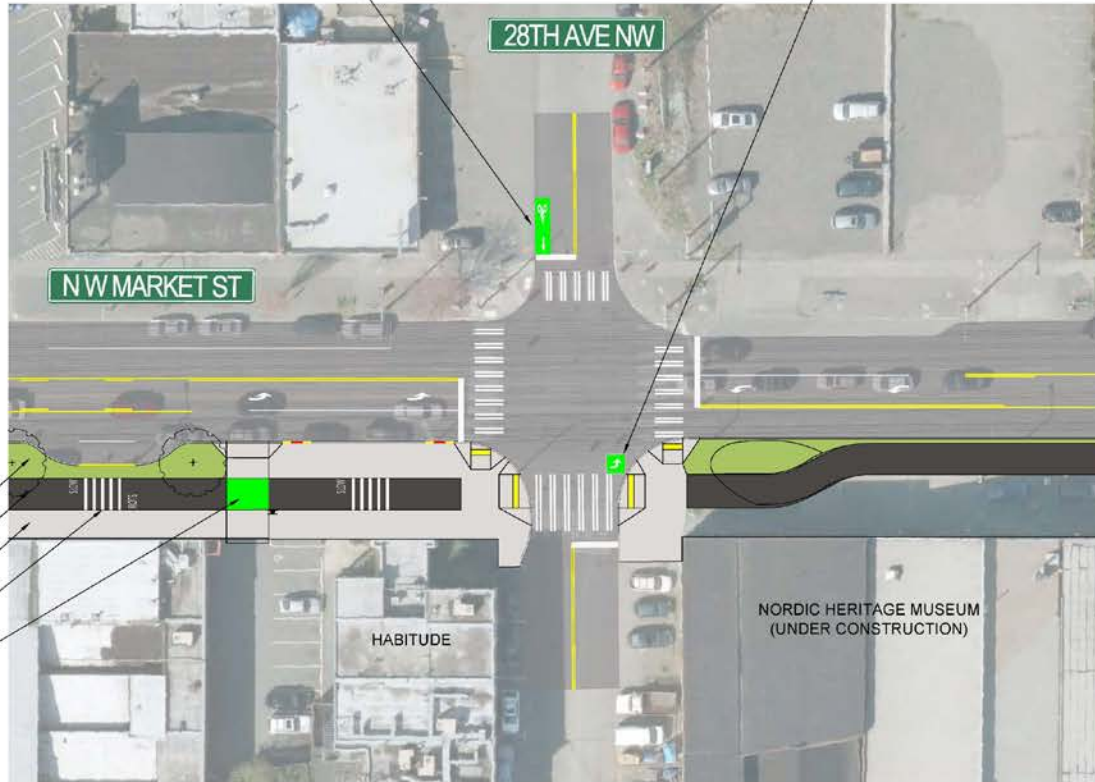
Missing Link Proposed Condition
NW Market St Cross Section
100 Foot Right-of-Way



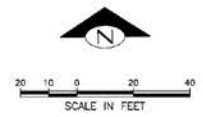
Market / 28th - Plan

CURB-SIDE PUSH BUTTON AND GREEN BIKE LANE FOR CONNECTION TO 28TH AVE NW NEIGHBORHOOD GREENWAY

BICYCLE LEFT TURN QUEUE BOX FOR CONNECTION TO 28TH AVE NW NEIGHBORHOOD GREENWAY



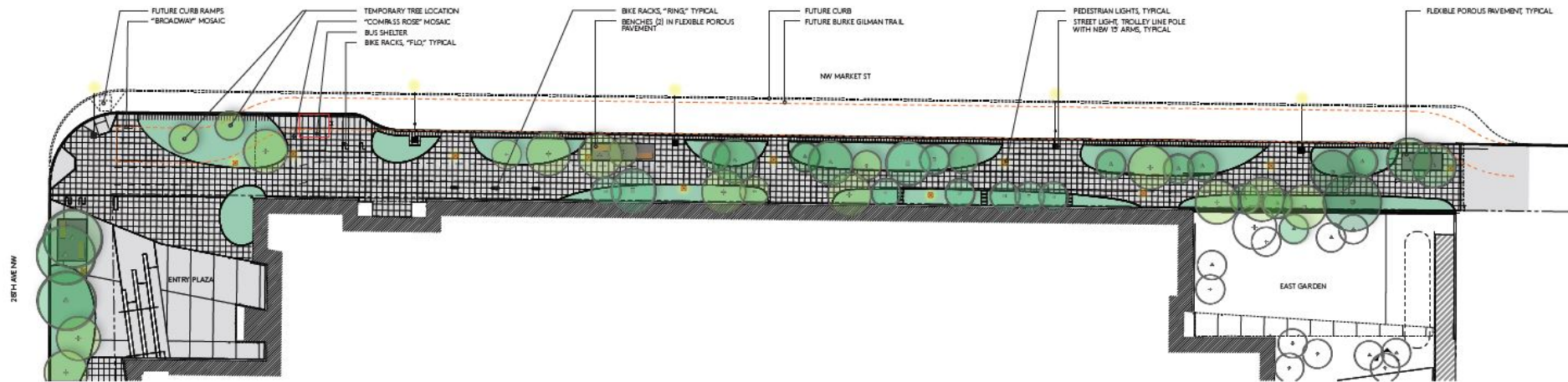
- 5' STREET BUFFER
- 12' SHARED USE TRAIL
- 10' SIDEWALK
- TRAIL MARKINGS
- GREEN PAVEMENT MARKING



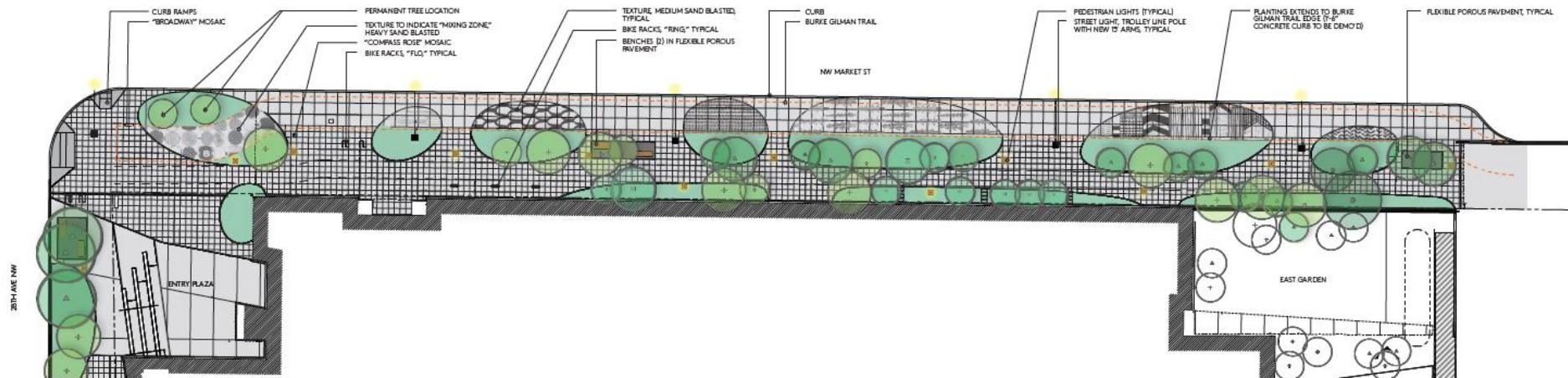
Paving Finishes



Nordic Heritage Museum (Video)

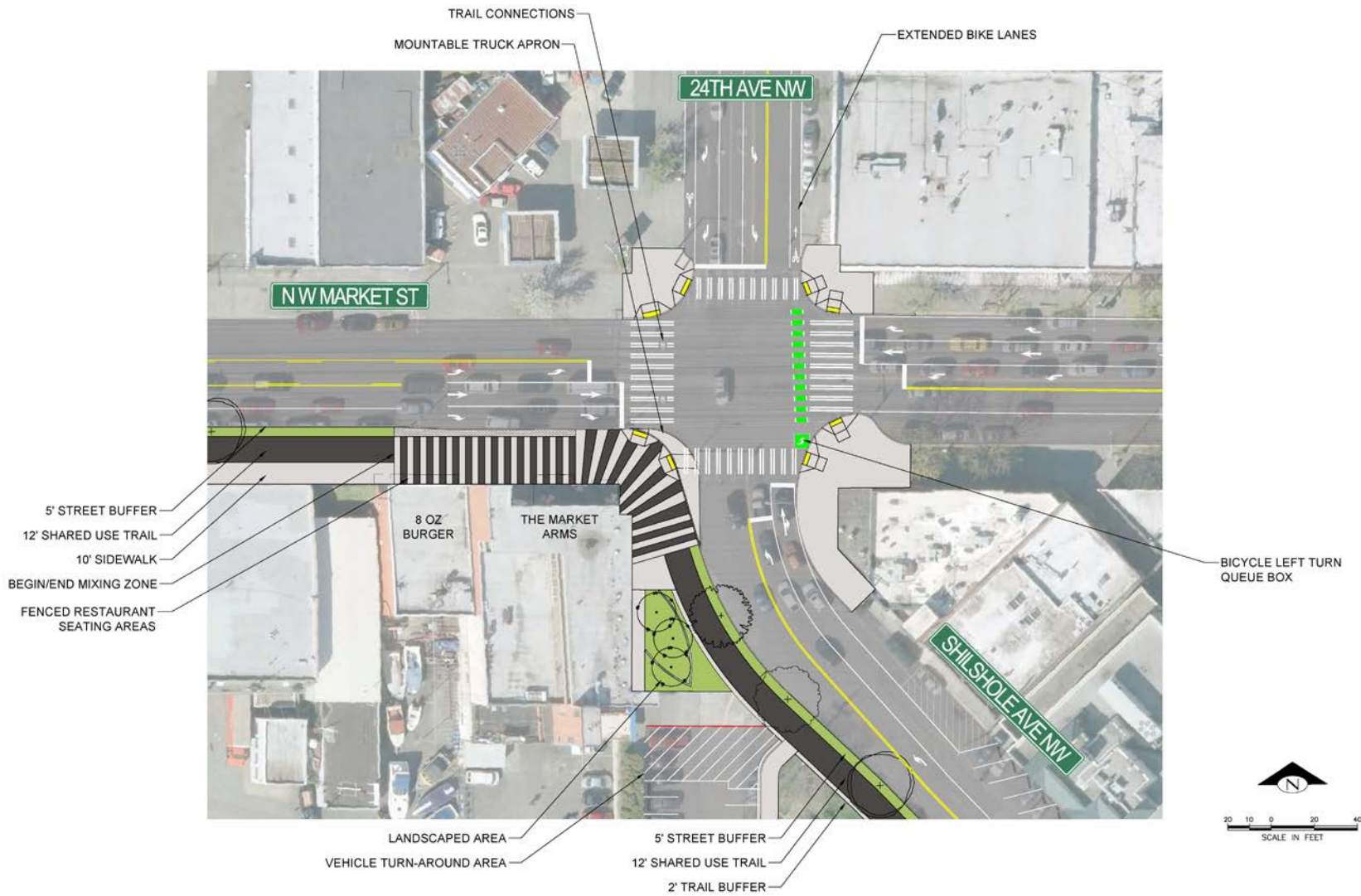


SIP ADDENDUM - INTERIM CONDITION



BURKE GILMAN TRAIL BUILD OUT

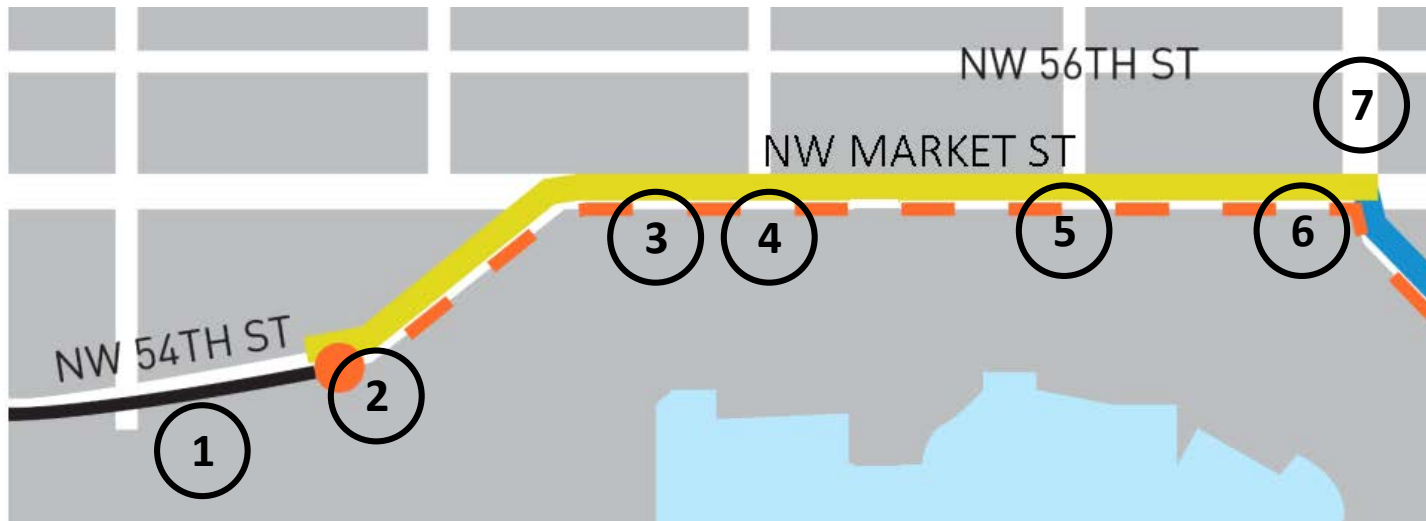
Market / 24th - Plan



Landscape Terrace



Changes from 30% to 60%



1. Restriped parking at the Ballard Locks and the Lockspot Café
2. Added mixing zone treatments at the Ballard Locks
3. Added low maintenance street trees at multiple locations
4. Improved connections to the Neighborhood Greenway at 28th / Market
5. Converted 26th to one-way south of Market St
6. Reconfigured 24th / Market intersection, modified sidewalk cafes, and added mixing zone
7. Extended bicycle lanes on 24th to Market St and added crossing treatments

SEGMENT 2

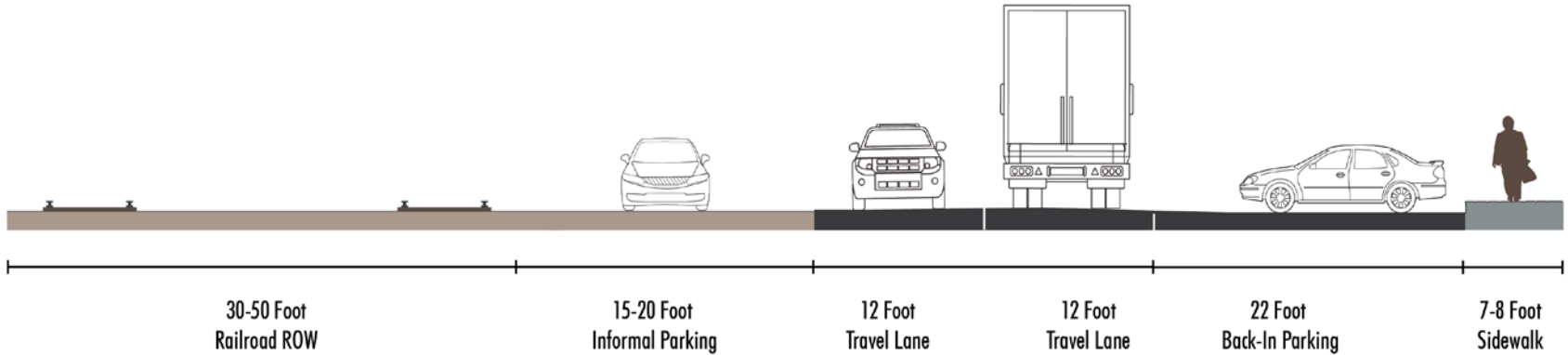
SHILSHOLE AVE NW

Segment 2

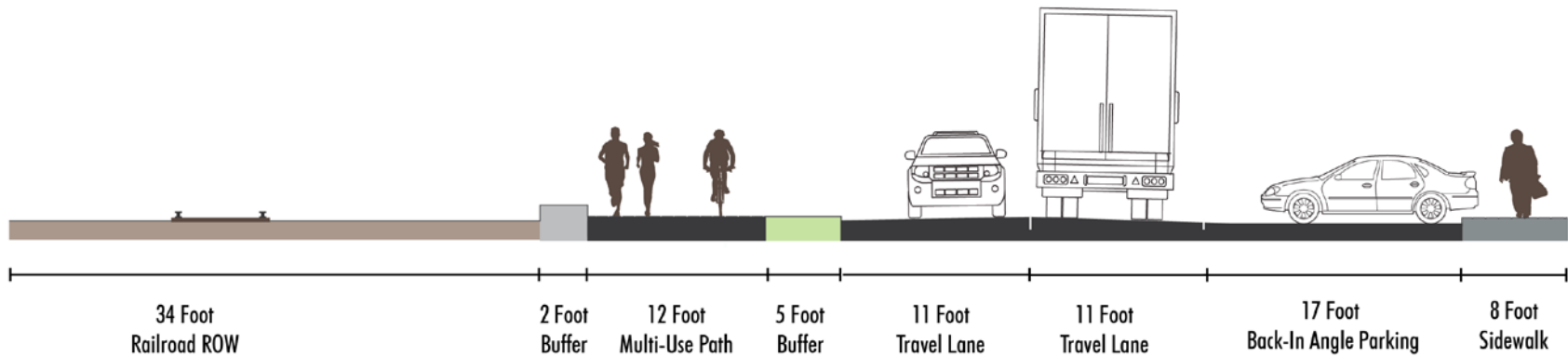


Shilshole - Section

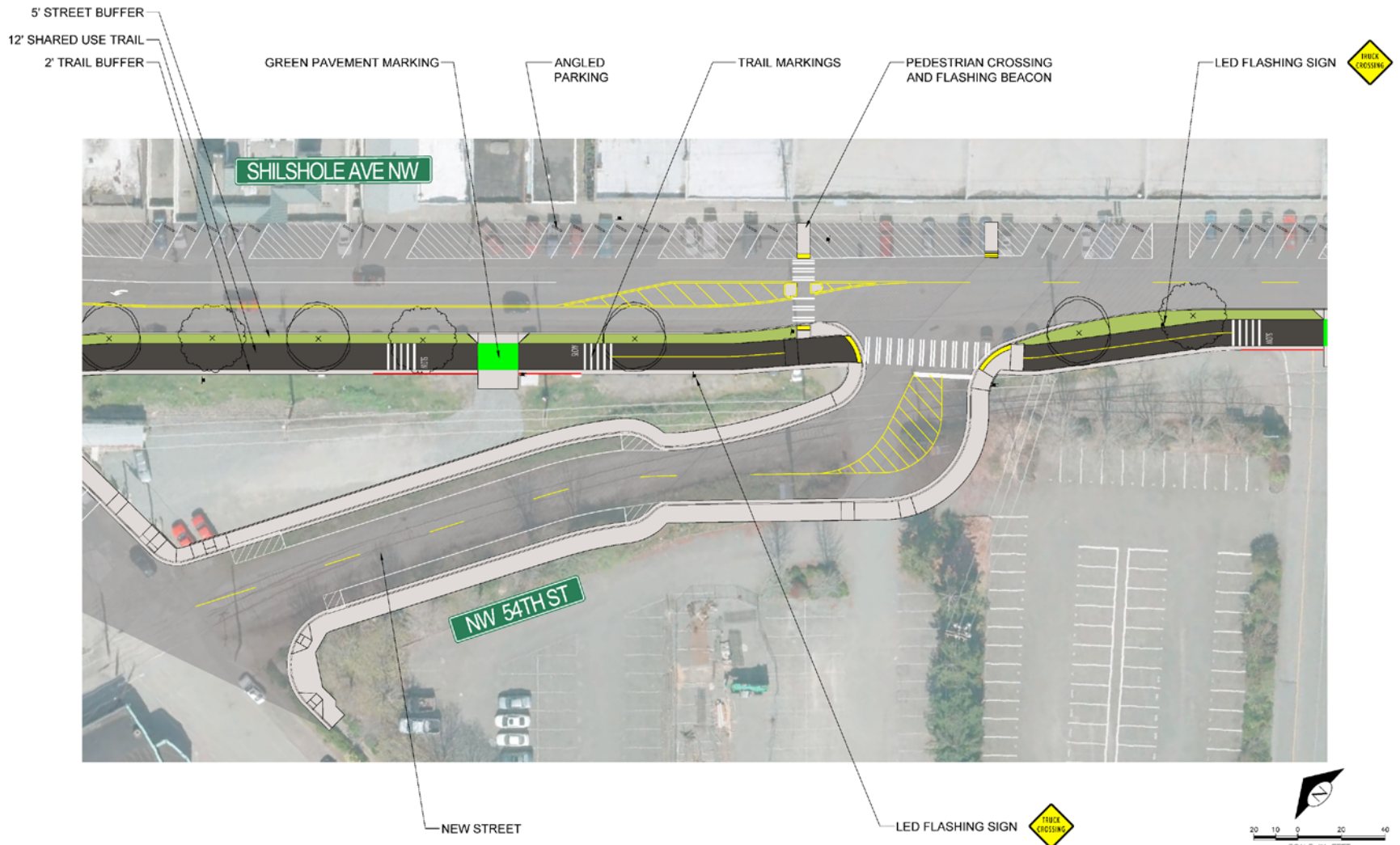
Existing Conditions
Shilshole Ave NW Cross Section
110 Foot Right-of-Way



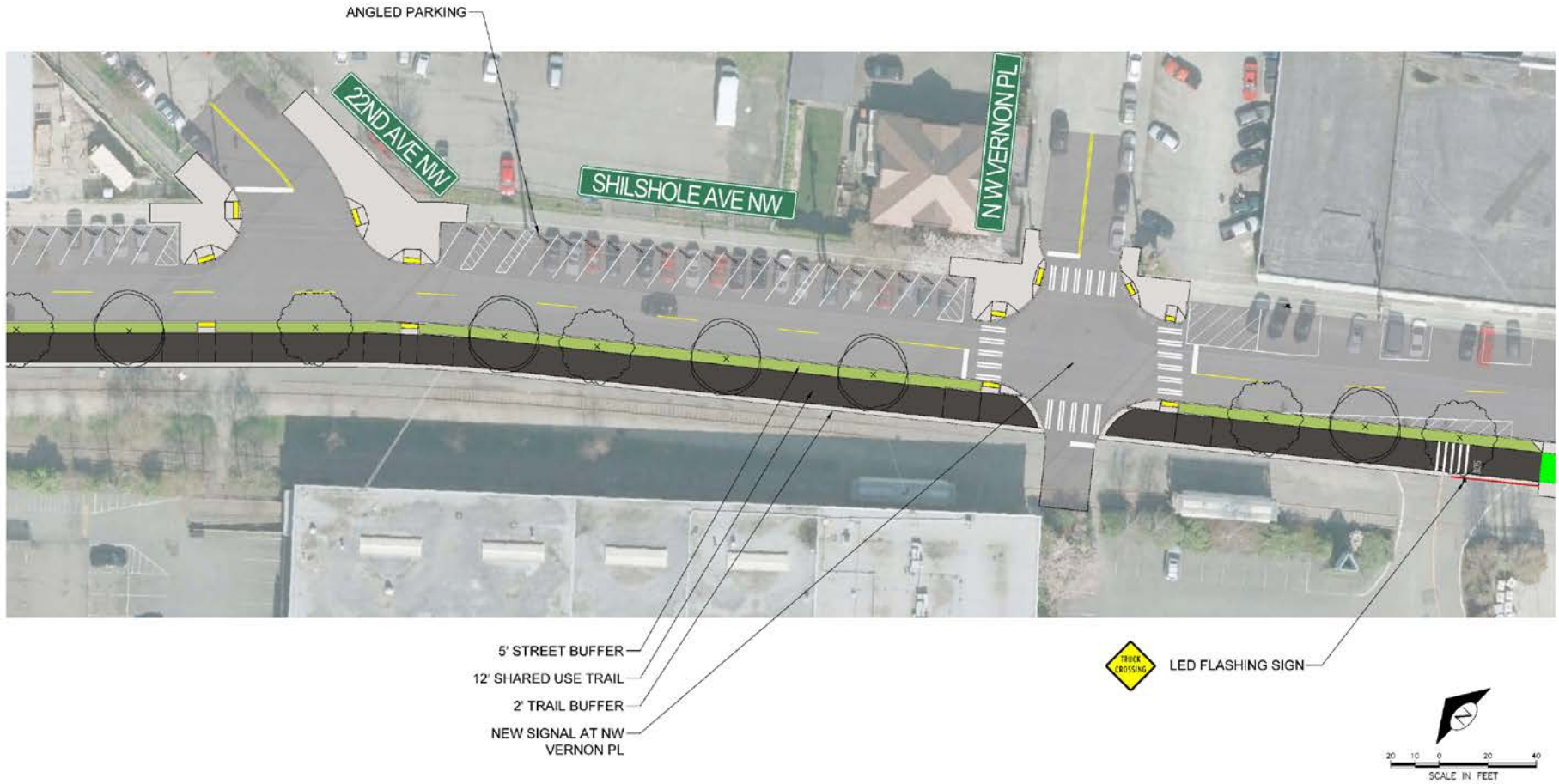
Missing Link Proposed Condition
Shilshole Ave NW Cross Section
100 Foot Right-of-Way



NW 54th Extension Proposed



Shilshole / Vernon



Existing



Proposed



Proposed



Proposed



Field Test – October 2nd



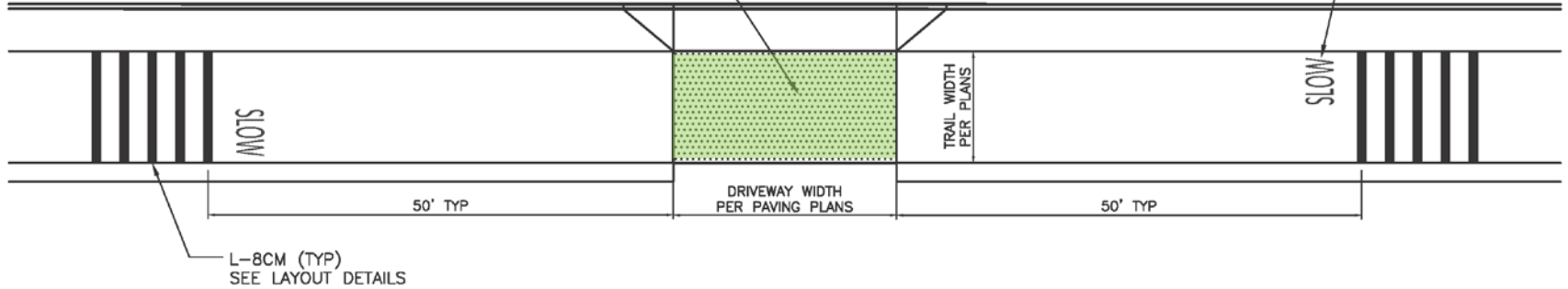
Field Test – October 2nd



Typical vs Industrial Driveway

GREEN METHYL METHACRYLATE (MMA); STD SPEC 9-29.3(4)

WHITE "SLOW" PAVEMENT LEGEND, MMA



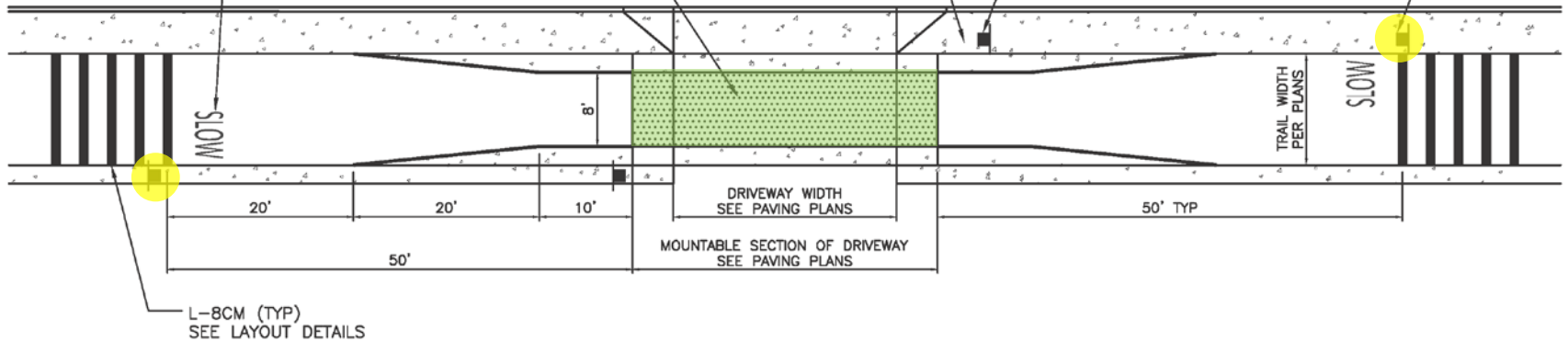
GREEN METHYL METHACRYLATE (MMA); STD SPEC 9-29.3(4)

SEE PAVING PLANS FOR SURFACING DETAILS

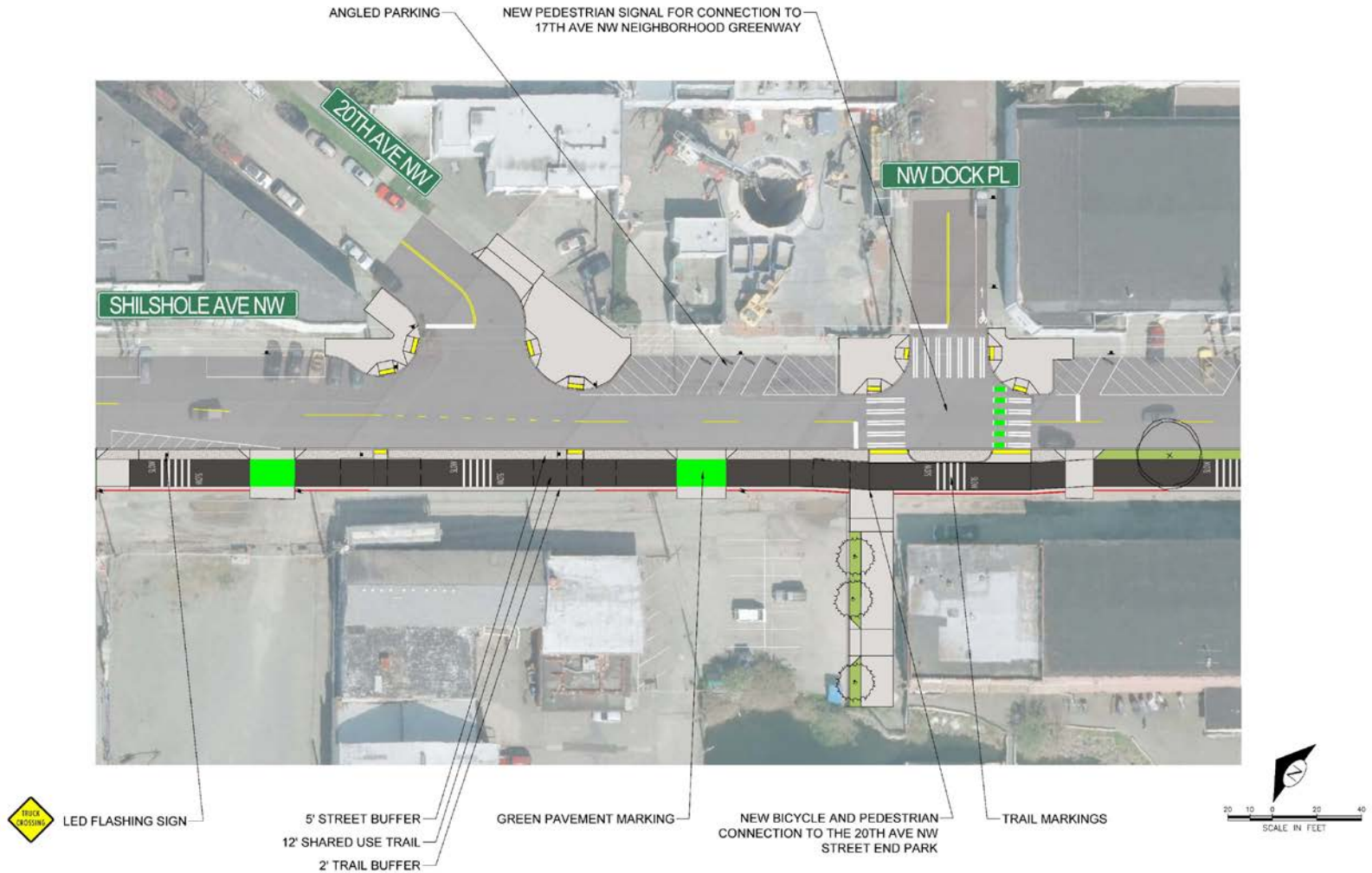
"TRUCKS MAKE WIDE TURNS, WAIT HERE" SIGN

TRUCK CROSSING BLINKER LED SIGN

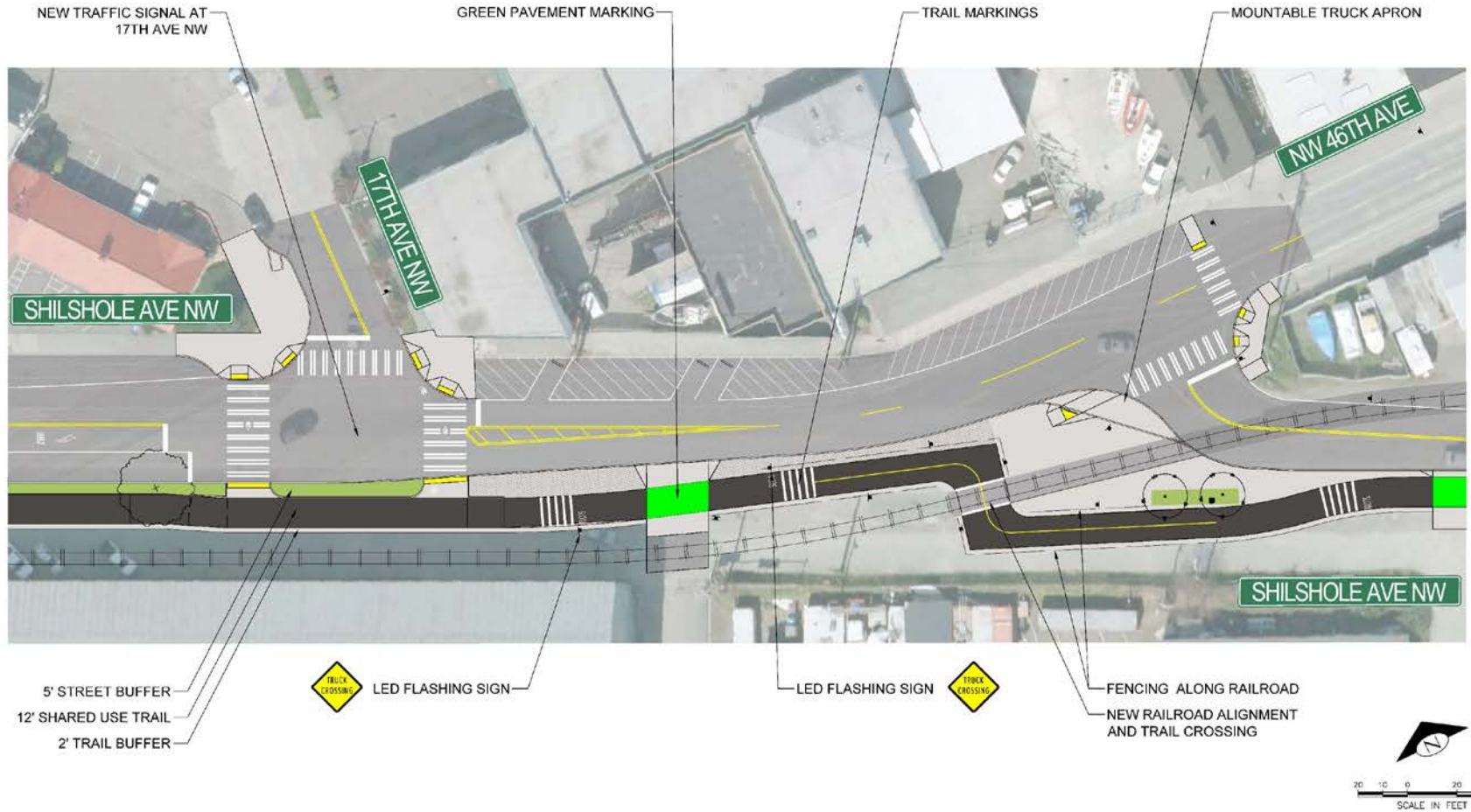
WHITE "SLOW" PAVEMENT LEGEND, MMA



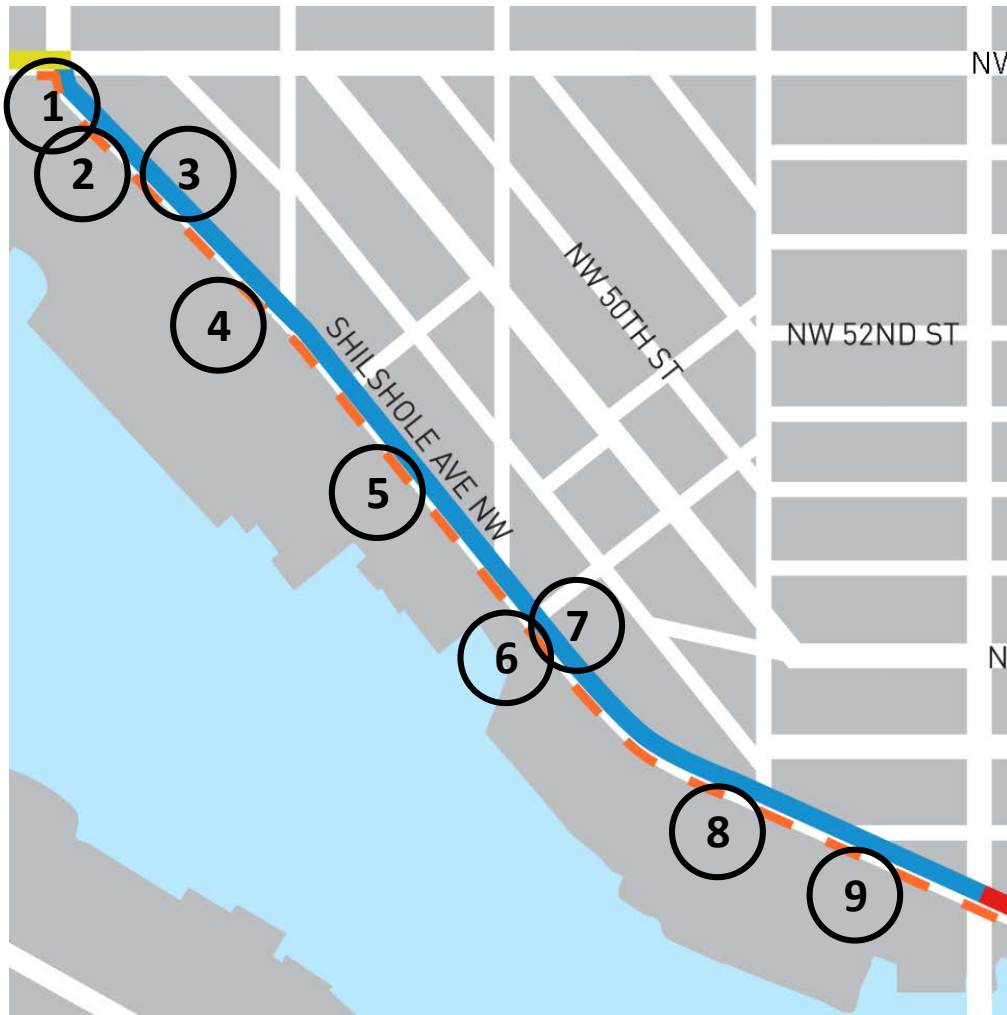
Shilshole / 20th / Dock



Shilshole / 17th / 46th



Changes from 30% to 60%



1. Added landscape terrace at 24th / Shilshole
2. Added perpendicular parking along 24th
3. Added rapid flash beacons and crosswalk at 54th / Shilshole
4. Added low maintenance street trees at multiple locations
5. Added truck aprons for WB67 truck movements at multiple locations
6. Extended sidewalk and landscaping at 20th Street End
7. Installed crosswalks and a half-signal at Dock / Shilshole
8. Redesigned 17th / Shilshole for truck turning movements
9. Added lighting, fencing, and signage at trail/railroad crossing

SEGMENT 3
NW 45TH STREET

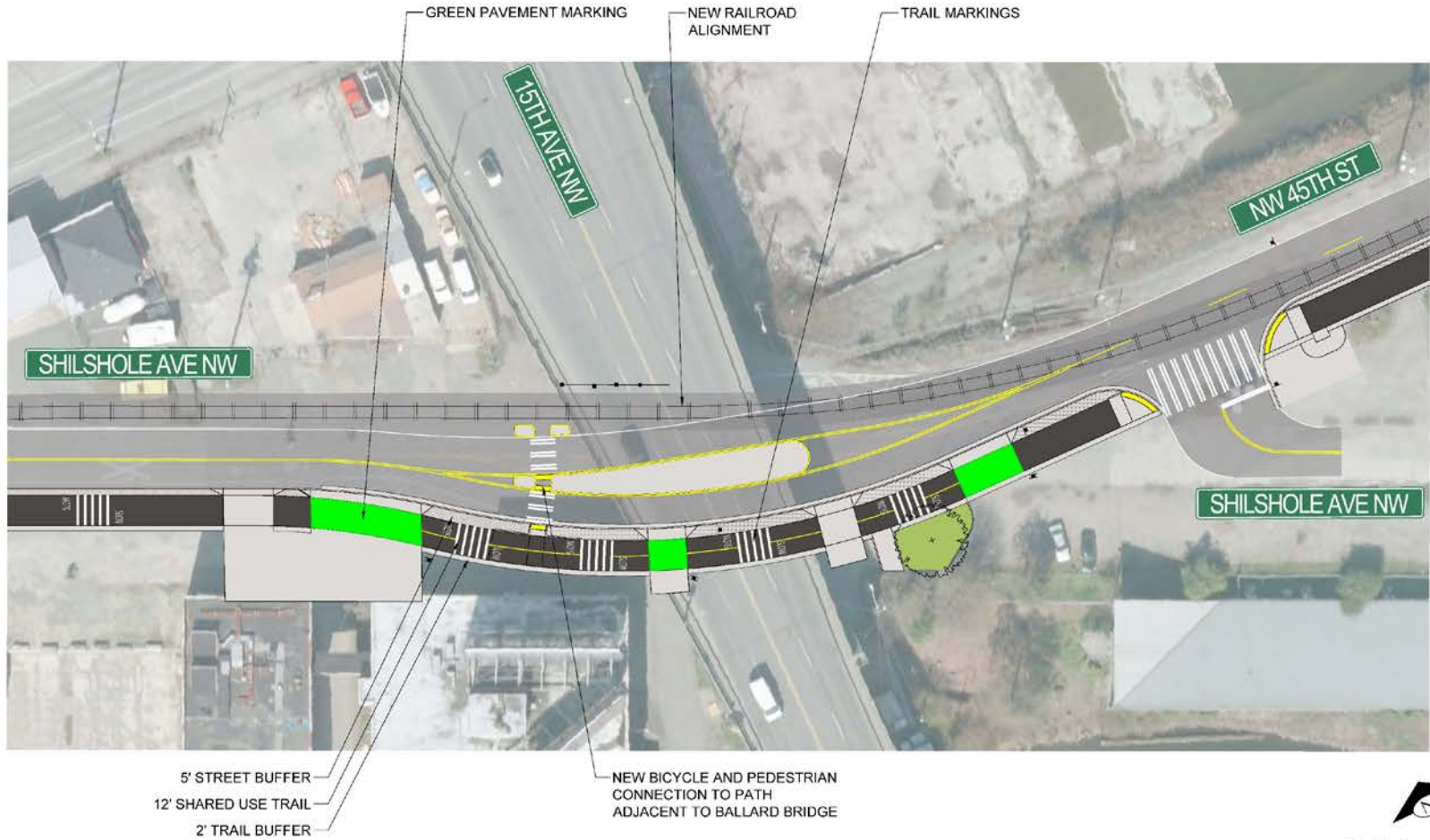
Segment 3



Existing (NW 45th)

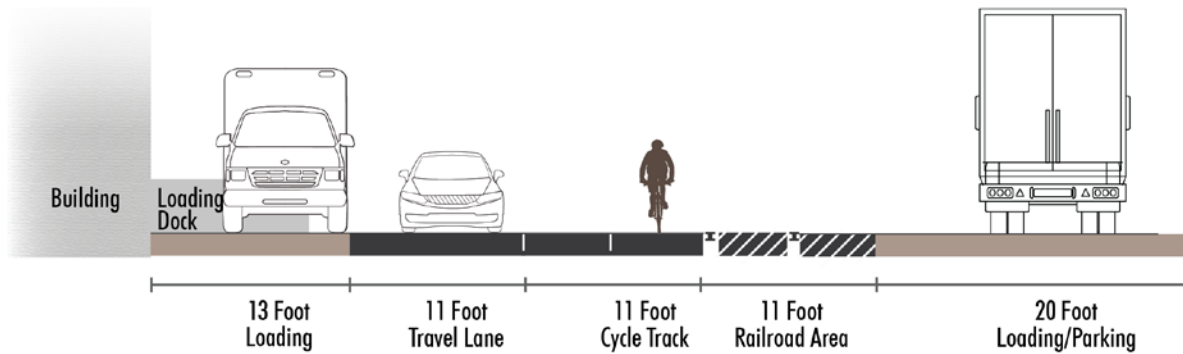


Ballard Bridge

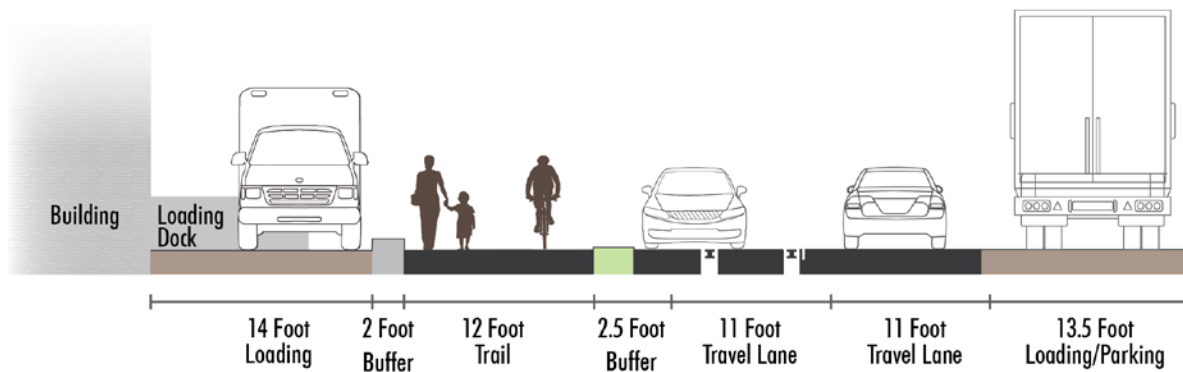


NW 45th - Section

Existing Conditions
NW 45th St Cross Section
66 Foot Right-of-Way



Missing Link Proposed Condition
NW 45th St Cross Section
66 Foot Right-of-Way



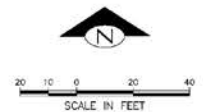
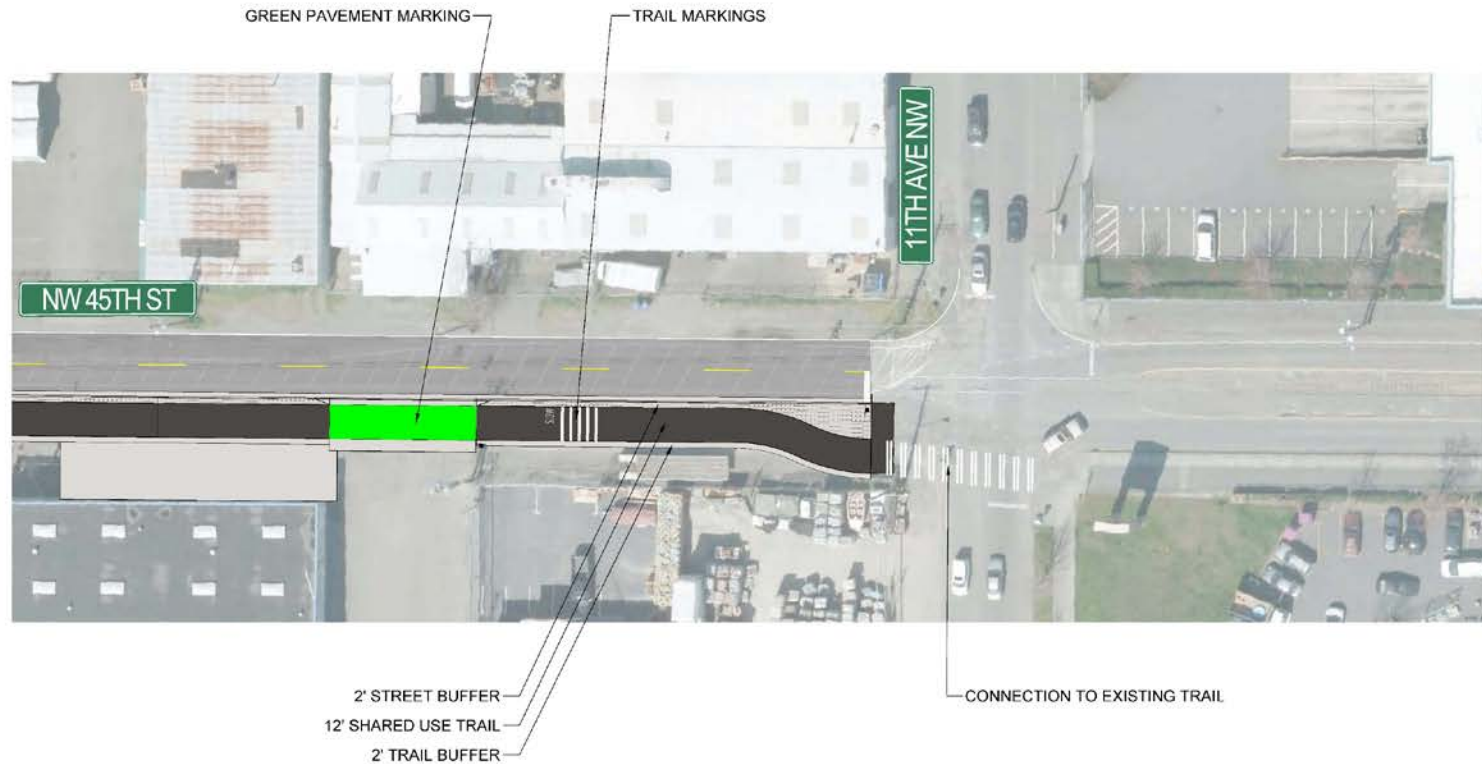
Existing



Proposed



45th / 11th



Changes from 30% to 60%



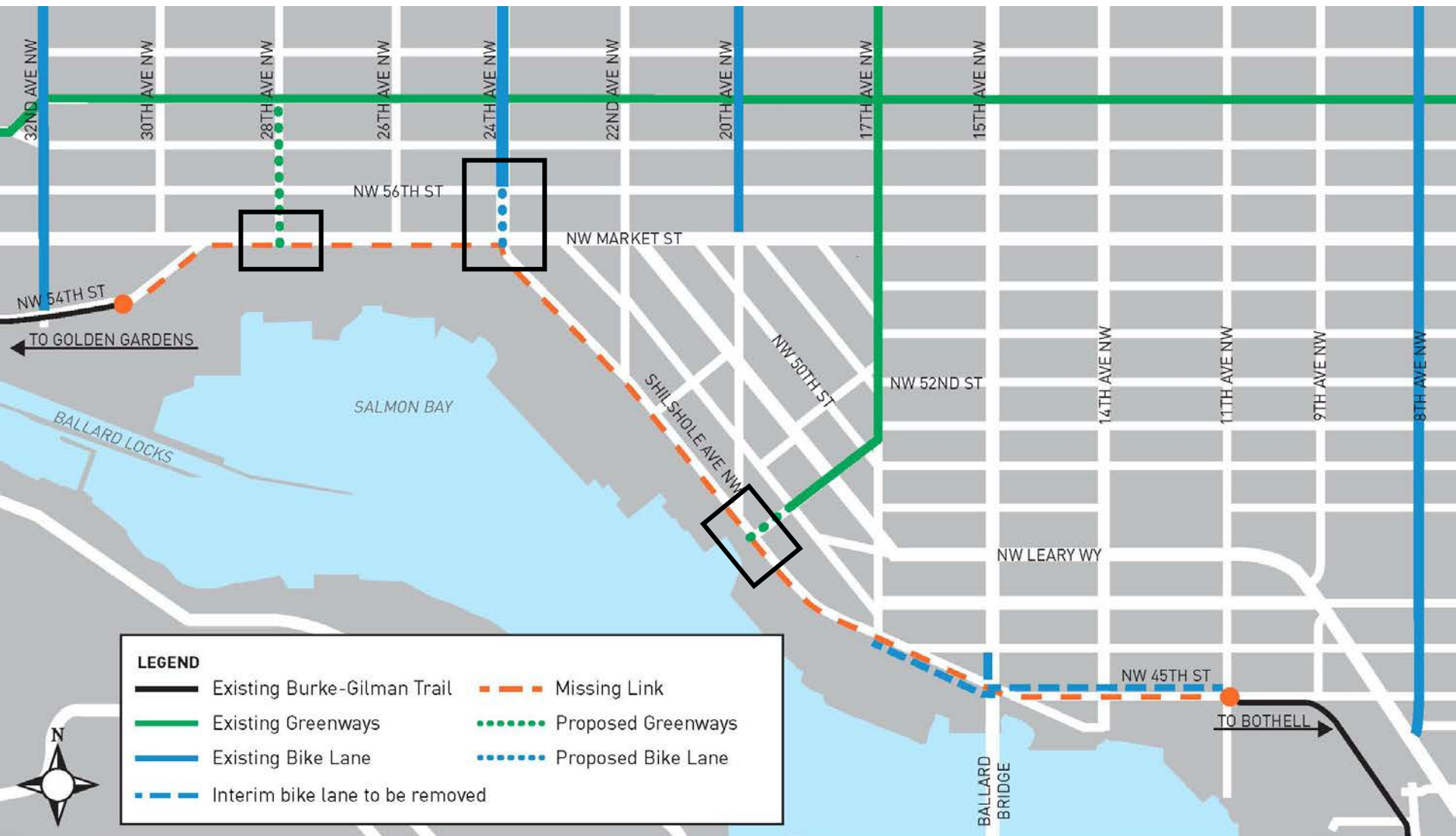
1. Connected the trail to the existing King County bike lane including new crosswalks, rapid flash beacons, and pedestrian lights
2. Restriped parking on the south side of 45th between 11th and 14th
3. Coordinated with Ballard Blocks 2 project
4. Added low maintenance street trees at multiple locations
5. Coordinated with SPU Ship Canal Water Quality Project

FULL CORRIDOR

Signal Changes



Bicycle and Pedestrian Connections



Street Trees



Places of Refuge



Sustainability

- Improved pedestrian and bicycle accessibility
- Compliance with SEPA
- Stormwater management, reduction in runoff
- Potential use of planting or pervious surface in the buffer, which would reduce impervious area
- Open area just south of 24th/Market can be graded to be a rain garden
- LED specified where lighting is proposed (more sustainable than traditional high-pressure sodium)
- MMA paint specified vs thermoplastic (plastic based)
- Construction efficiencies (NHM, SPU, Greenways)
- Pollution prevention plan (TESC)

1% for the Arts

- Schedule
 - PAAC Approval (funding): 7/25/17
 - PAAC Approval (call): 10/24/17
 - Call for Artists: 10/25/17
 - Panel Selection: 11/30/17
 - Panel Interviews: 12/13/17
 - PAAC Approval (selection): 12/19/17
 - Artist Contract: 1/10/18
 - DAC Meeting: 1/11/18
 - Open House: 1/18/18
 - PAAC Approval (design): 3/27/18
 - PAAC Approval (design): 5/22/18
- Concepts: Industrial signage, buffer improvements, street end improvements



NEXT STEPS

Schedule

30% Design:	July 2017
60% Design:	September 2017
90% Design:	November 2017
100% Design:	December 2017
Construction:	May 2018 - May 2019

QUESTIONS?

louisa.galassini@seattle.gov

www.seattle.gov/transportation/BGT_MissingLink.htm