

YOUR VOICE,  
YOUR CHOICE!



PARKS  
& STREETS

## Codkaaga, Doorashadaada : Beeraha Nasashada & Waddooyinka

**Qaboojinta dhaqsiyaha:** Naqshadaynta jidka waxaa loogu talagalay in la ha-gaajiyo ammaanka, in la yareeyo tirade baaburta isku dayda iney kuwa kale dhinac maraan oo xaafadaha dhex mara, iyo guud ahaan iney dadka ku dhiirri geliyaan iney si tartiib ah gawaarida u wadaan.

### Kuusaska Qarka-jidka:

Fidinta dhinacyada-lugaynta waxa loo isticmaalaa soo gaabinta masaafada ka gudubka, iyo in marin loo bixiyo gaadiidka dadwaynaha iyo in la ballaadihiyo goobta ama aagagga lagu lugayn-karo. Waxa kaloo loo isticmaalaa in lagu qaaboojiyo xawaaraha gaadiidka meesha maraya.



### Calaamadaha Biglaynta leh (Flashing Beacons)

Nalal si fiican loo arko oo bilcaya, laguna rikibo isgoysyada oo dadka lugaynaya iyo kuwa baaskiilka wata gacmahooda ku maamulaan iyagoo riixaya batoon.



### Waddo dhinac qiime jaban:

Waddo dhinaceedyo laga sameeyay waxyaabo qiime jaban, sida laami lagu shamiiteeyey ama lagu rinjiyeyey.



### Marsho Inbiyeedi Qiime Jaban:

Shaagga ama lugta gaariga waxey ku istaageysaa halka kala soocda leexadka beerta iyo jidka.



### Waddo ka gudub dhexdhexaad ah:

Jasiirado sare oo waddada dhexdeeda ah waxey u suurto gelineysaa dadka iney helaan meel nabad ah oo ay ku hakadaan inta ay iska eegayaan nuska haray iney gooyaan.



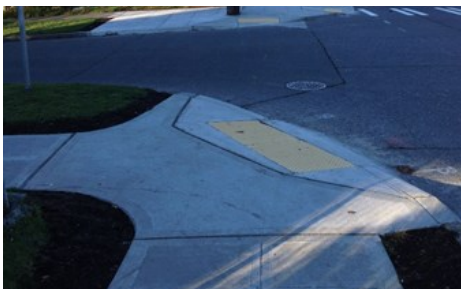
### Burooyinka dhaqsiyaha iyo Miisaska:

Burooyinka ku fidsan jidka oo idil, waxaa loo isticmaalaa yareynta dhaqsiyaha baabuurta.



### Leexadyada Geesaha waddooyinka:

Meelo daadeg ah oo laga sameeyo isgoysyada si loogu sahlo dadka kursiga socda saaran ( wheelchair), kuwa lugaynaya iyo baaskiilleyda iney sahal u gudbaan.



### Goobaabaha Taraafikada:

Wareegyada lagu sameeyo isgoysyada waddooyinka aan halbowlaha ahayn, waxa loogu talagalay ka-hortagga isku dhaca gaadiidka, iyo in la gaabiyo xawaaraha gaadiidka oo la horumariyo badbaadada baaskiilka iyo lugaynta.



### Dariiyyada Shamiiteysan:

Dariiyyada shamiiteysan ee la lugeeyo, oo ka duwan kuwii caadigii ahaa ee lahaa waddo dhinac iyo biyo mareen.

