



2018 Project Review Sheet (2019 Construction)

City Council District 4

Ballot #4G

Project #	18-451
Project Title:	Crossing Improvements at 15th Avenue NE and NE 55th Street
Location:	15th Ave NE and NE 55th St

SDOT Project Summary

SDOT approves project

- Yes
- Yes, with revisions
- No

Comments: Coordinate with 15th Ave NE AAC Project

There is an opportunity to partner with another program:

- Yes
- No

Partnering Program: Neighborhood Greenways

Total Project Cost: \$ 90,000

Solution and Comments:

This review has been completed for use in the 2018 Your Voice, Your Choice: Parks & Streets process.

This location meets SDOT's criteria for marked crosswalks and flashing crosswalk beacons. This is a planned Neighborhood Greenway crossing in the future, so pedestrian and bicycle push buttons will be installed.

Image:

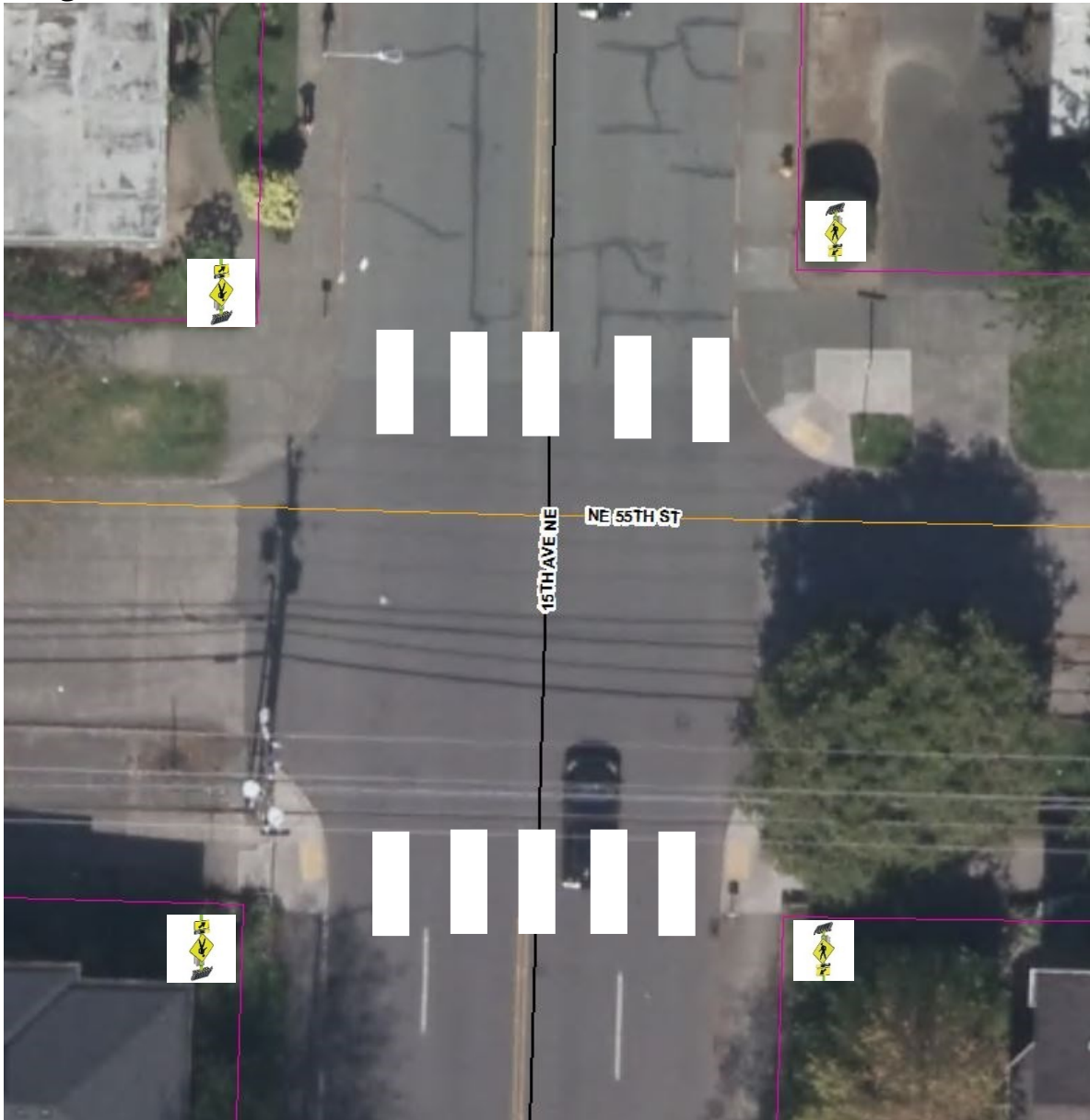


Figure 1: Proposed Improvement

Information Provided by Community Members

Project Idea: Pedestrian-activated flashing beacons

YVYC 2018: 18-451, 15th Ave NE and NE 55th St



Need for Project: A flashing beacon was added one block south at 52nd Street for good reasons - traffic calming and pedestrian safety. The precise same conditions exist at NE 55th Street - same street width, same parking arrangements, same speed limit, and same difficulty in pedestrians crossing the street. However, 55th Street is quite far away and needs its own improvements to the benefit of everyone's safety while traveling on our streets.

Community Benefit from Project: Hundreds of nearby residents, many of whom are people of color, low-income, and students. Drivers will also benefit by having an easier time of knowing when pedestrians are present.



Risk Registry:

SDOT Review	Drainage impacts	Constructability	Community process
Low	N/A	Low	Low

Cost Estimate:

<i>Design Phase</i>	
Preliminary Engineering (Survey) Costs	\$ 1,000
Project Management Costs (City Labor)	\$ 1,000
Design Costs (Consultant Fees, if externally designed, internal labor otherwise) - use 10% of construction cost for in-house design of relative uncomplicated projects	\$ 7,000
Subtotal - Design Phase Costs	\$ 9,000
Design Contingency (10% of Design Phase Subtotal)	\$ 900
Total Design Phase Costs	\$ 9,900
<i>Construction Phase</i>	
Construction Costs (include urban forestry, signs & markings, traffic control, layout or construction staking as necessary)	\$ 56,000
Drainage Costs	\$ 0
Estimating Contingency (10-20%)	\$ 5,600
Subtotal - Construction Costs	\$ 61,600
Construction Management (10-25% of Construction Cost)	\$ 6,160
Construction Contingency (20%)	\$ 12,320
Total Construction Phase Costs	\$ 80,080
Total Project Cost = Total Design and Construction Phase Costs	\$ 89,980