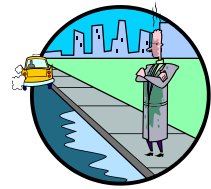




# Have Ideas for Neighborhood Park and Street Improvements? Propose a Project Today!



## What is the Neighborhood Park and Street Fund (NPSF)?

These funds are a portion of Seattle's city budget set aside for 2017 improvements to streets and parks. NPSF projects are *proposed by the community and managed by the City*.

## What projects are eligible?

The NPSF can be used for projects valued up to \$90,000 to fund park or street improvements.

*Examples of park projects include:* accessibility improvements, trail/path maintenance and upgrades, park benches or tables, natural area renovations, and minor playground improvements.

*Examples of street projects include:* crossing improvements, such as rapid flashing beacons, curb bulbs, and pedestrian countdown signals, [traffic circles](#), speed humps and [speed feedback signs](#). This funding source may be used for sidewalk and walkway repair/improvements and for short segments of sidewalk construction (less than 100 feet).

**New sidewalks are typically more expensive than this funding allows.**

## Who decides which projects will be funded?

The NPSF is a competitive process and not all projects will be funded. Each Neighborhood District Council will review applications and select three projects to forward to the Seattle Department of Transportation (SDOT) and Seattle Parks and Recreation (Parks) for feasibility and cost analysis. Funding decisions are based on recommendations from District Councils, Parks and SDOT, with the final decisions made by the Mayor and confirmed by the City Council.

## How are proposals evaluated?

District Councils will consider the following criteria:

- Significant Impact:** The project will have a widespread positive impact on the neighborhood as a whole.
- Broad Support:** The project has the support of multiple neighborhood or community groups.
- Leveraging Opportunities:** The project leverages funding from other funding source (s).
- Equity:** Funding is to be equitably shared among neighborhoods over time. Neighborhoods that are already receiving significant public investment from other sources may be also given lower priority.

# 2016 Neighborhood Park and Street Fund Fact Sheet

2016 TIMELINE	
<b>February 8th</b>	<b>APPLICATION DEADLINE</b>
<b>February/March</b>	Neighborhood District Councils review applications.
<b>Early April</b>	Neighborhood District Councils forward top 3 projects to SDOT/Parks for feasibility review and initial cost estimates
<b>Early June</b>	SDOT/Parks return project feasibility reviews and cost estimates to Neighborhood District Councils
<b>June, July</b>	Neighborhood District Councils review and submit final project rankings to DON
<b>September</b>	DON notifies applicants of award/no award project status. Project award recommendations are included in Mayor's proposed budget
<b>November</b>	City Council considers recommendations and adopts 2016 budget
<b>December</b>	DON announces final project awards
<b>2017</b>	Project implementation

## How do I propose a project?

Complete the application form which is available on-line at

<http://www.seattle.gov/neighborhoods/neighborhood-park-and-street-fund/npsf-application>. Both residential and business groups are encouraged to apply.

Applications may also be submitted by mail, (PO Box 94649, Seattle, WA 98124-4649, Attn: Wendy Watson) or fax 206-233-5142.

## Questions or Assistance?

- If you have questions about the application process, or about the feasibility of your proposal, contact your Neighborhood District Coordinator. A list of coordinators is available at <http://www.seattle.gov/neighborhoods/neighborhood-district-coordinators>. You may also contact Wendy Watson at [wendy.watson@seattle.gov](mailto:wendy.watson@seattle.gov) or 206-684-0719
- For Parks projects, contact Pamela Kliment at [pamela.kliment@seattle.gov](mailto:pamela.kliment@seattle.gov)
- For Transportation projects, contact Howard Wu at [howard.wu@seattle.gov](mailto:howard.wu@seattle.gov)

