



Population Health Facility

Request for Comments on Scope SEIS

City/University Community Advisory Committee (CUCAC)

September 13, 2016

Agenda

- Project overview
- Overview of alternative sites
- Site A 37W
- Site B 22C
- Site C 50S & 51S

Project Overview

Build a new facility on the University of Washington campus in Seattle with three main purposes:

1. House the Institute for Health Metrics and Evaluation (IHME), the Department of Global Health (DGH), and selected portions of the School of Public Health (SPH) in close proximity to the core of campus and the UW Medicine and UW Health Sciences complex.

Project Overview

2. Be a physical convening space and compelling catalyst for Population Health endeavors across all three UW campuses, the region, and the world, creating a high profile marker for the UW's commitment to Population Health, as outlined in President Ana Mari Cauce's May 2016 address to the community.

Project Overview

3. Be an idea laboratory and collaboration incubator for students, faculty, staff, and visitors from a wide range of population health disciplines, who will come together for training, research work, and informal discussions yielding new insights and innovation opportunities.

SEPA EIS Scoping

- SEPA determination to prepare an EIS.
- Initiating SEPA process to analyze alternatives.
- Conduct Historic Resource Addendums (HRA)s on existing buildings.
- Scoping notice published in September.
- 21- day public scoping period.
- CUCAC presentation for draft EIS December 2016 or January 2017.

Schedule

- EIS September 2016 – April 2017
- Site Selection September 2016 – April 2017
- Design February 2017 – June 2018
- Construction May 2018 – May 2020
- Closeout May 2020 – October 2020

Overview of Potential Sites



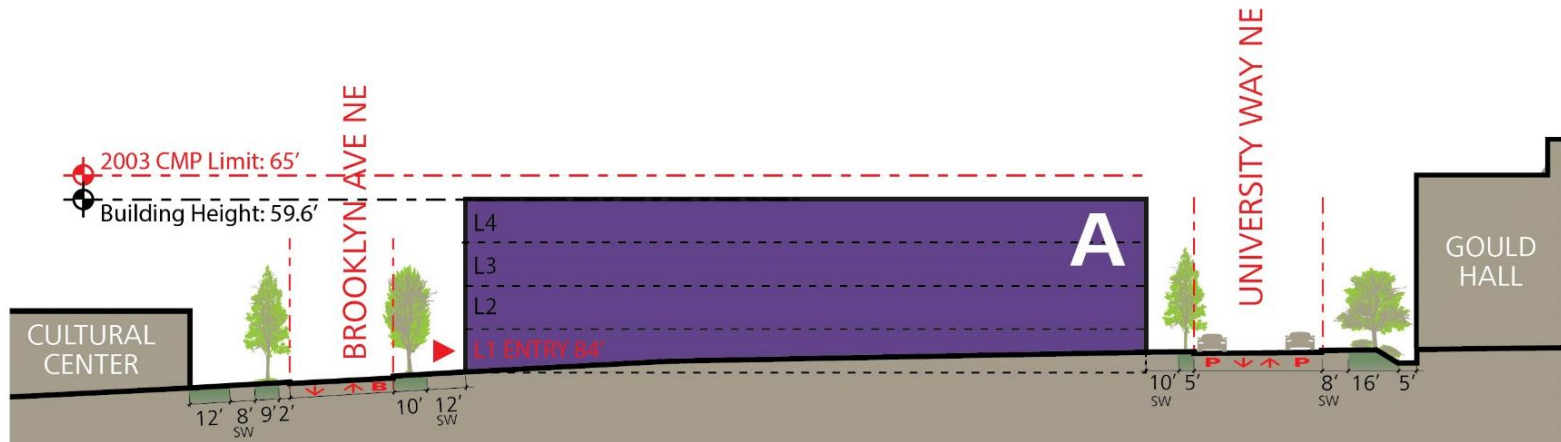
Target Project Area : Approx. 300,000 GSF

Maximum capacity per 2003 CMP:

Site	Max SF*	Max Height
A (37W)	309,000	65'
B (22C)	292,000	105'
C (50S + 51S)	315,000	65'

* Not including below grade construction

Site A (37W)

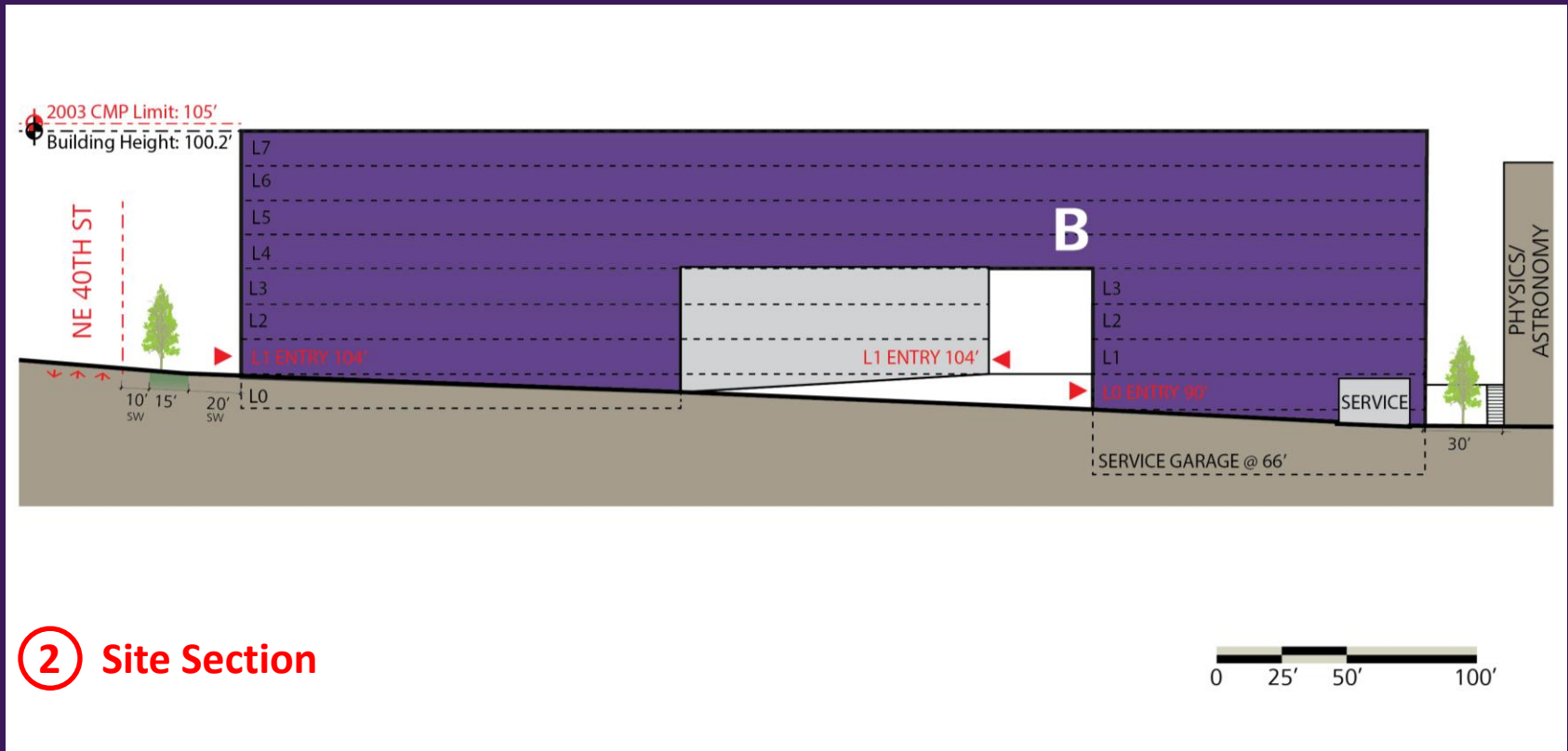


① Site Section

West Campus – Long Term Vision

- Balance dense development with access to open space
- Focus proposed development around new functions at the heart of the district
- Activate ground floor functions
- Extend and re-establish the street grid
- Improve pedestrian connections to South & Central Campus
- Provide Flexible Building Footprints to accommodate a range of functions
- Connect the University District to the waterfront

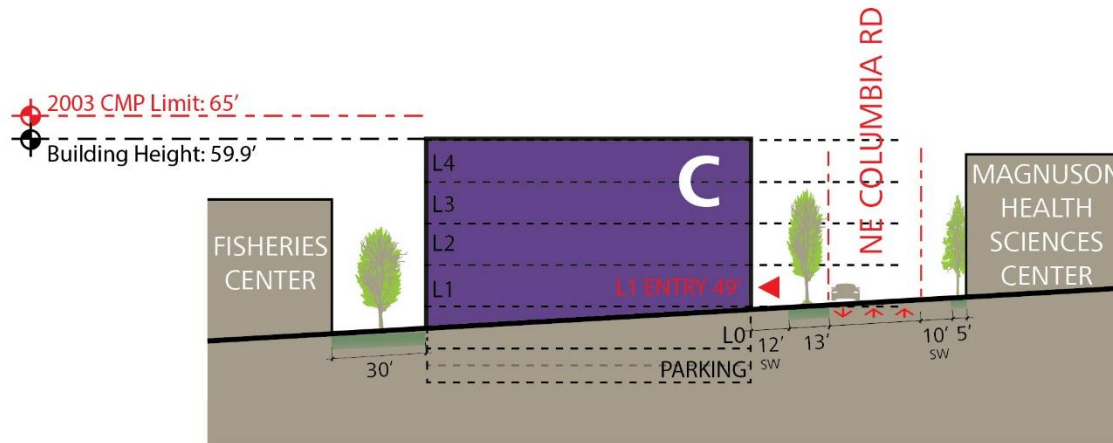
Site B (22C)



Central Campus – Long Term Vision

- Preserve and enhance the character of the historic setting and its significant buildings and open spaces
- Maintain existing building height limits
- Concentrate development along the periphery of the Central Campus area to minimize interference with the existing campus character
- Provide additional capacity to support the University's educational, research and service missions

Site C (50S + 51S)



③ Site Section



South Campus – Long Term Vision

- Increase development capacity, and create a state-of-the-art health sciences complex and academic medical center
- Create an inviting, functional and attractive public realm
- Leverage and celebrate its prime location on the waterfront with a shared campus green, continuous waterfront trail, courtyards and upper terraces
- Improve access to West, Central, and East Campus through enhanced pedestrian connections and a continuous waterfront trail

Questions