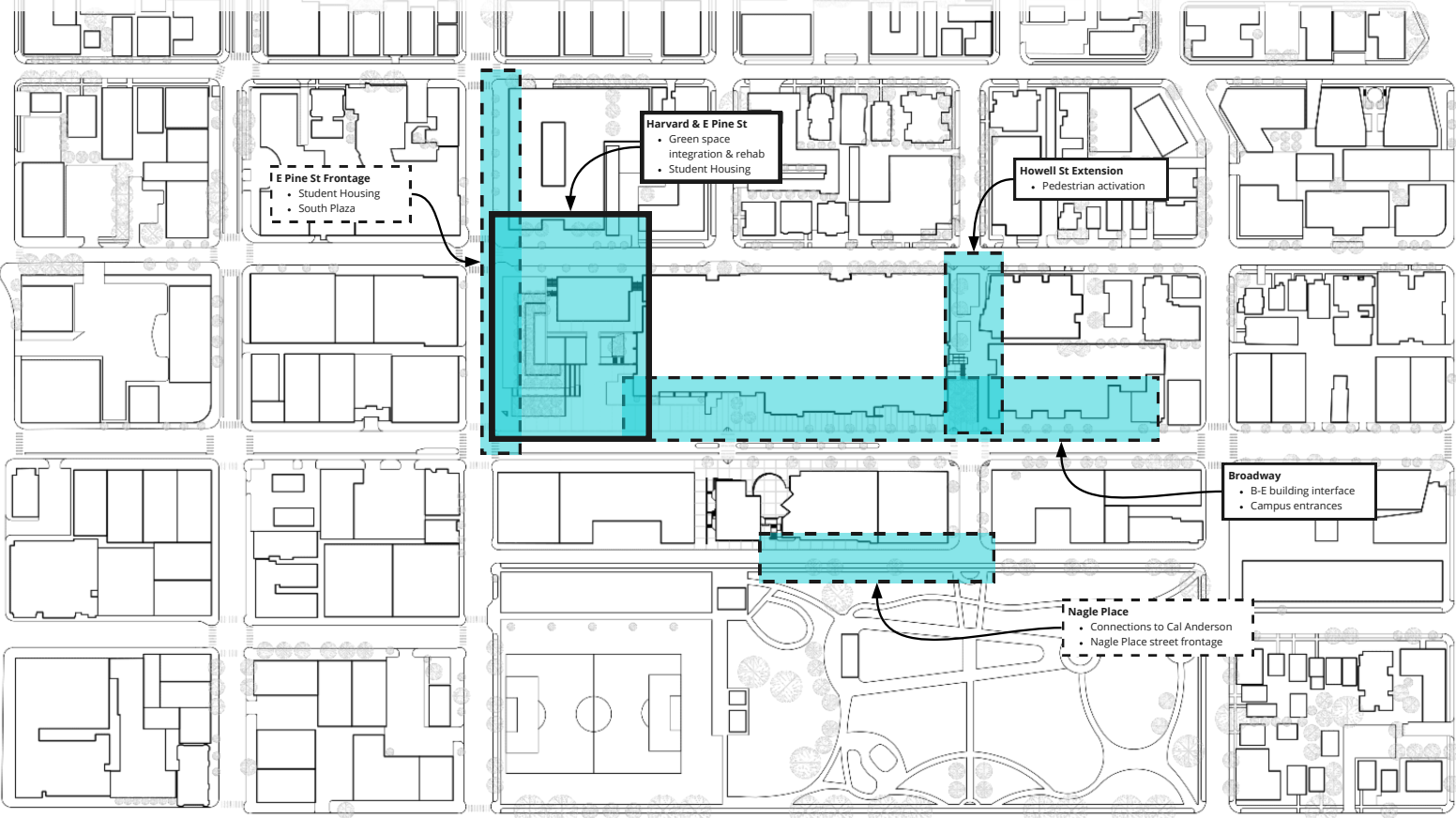


SEATTLE CENTRAL COLLEGE MAJOR INSTITUTION MASTER PLAN

C.A.C. MEETING 10 - SOUTH PLAZA & HARVARD / E PINE ST.



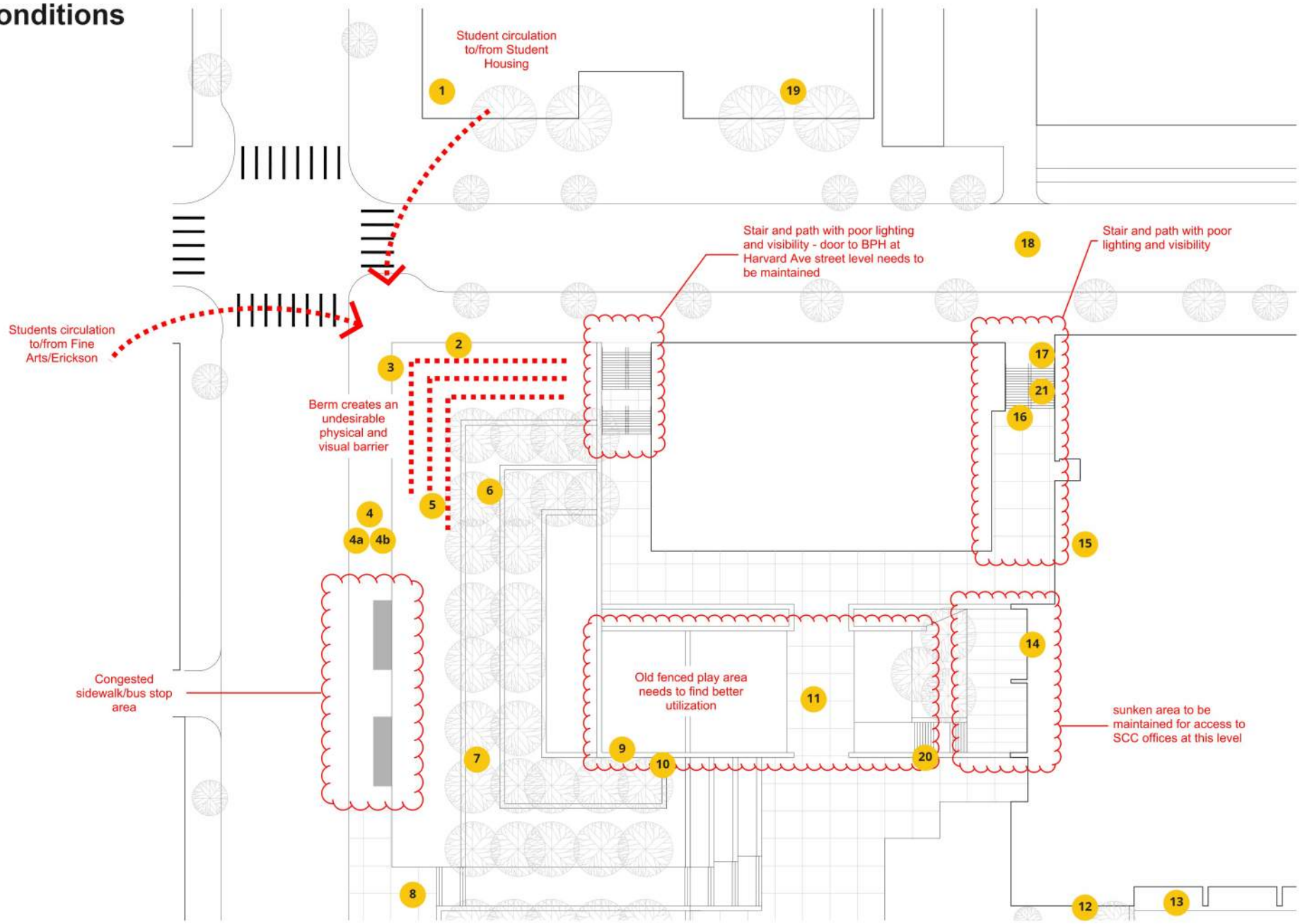
Comments - Existing Conditions

1. consider improving existing and [tiering] in the frontage from the parking garage into southwest corner of the performance hall plaza "glen"
2. Locate at SW grade businesses within Pine frontage, underneath [re-designed] upper plaza.
3. This southwest facing wall creates the feeling of a fortress/closed off environment - should be gently terraced to maximize views of city, invitation and activation. The sunken nature of the 'glen' creates a perceived safety issue - trees aid this as they are sunken
4. I'd like to see the [berm] flattened
 - a. Yes!
 - b. Berm flattened but don't lose that wall
5. Use the grade change to create some micro-retail sites underneath south plaza.
6. Park furniture and small reading/relaxing nooks would be great, provided they remain visible to the street and plaza
7. Okay to lose the ultra linear form of existing tree plantings.
8. Opportunity for corner treatments of redesigned plaza to have a relation to each other, both at Broadway and at Harvard. Designer could consider symmetry, similar use of materials, colors, treatments, and be [interesting] to traverse from one corner to [another].
9. Could this former play area be used for farming tied to culinary programs?
10. In our community tour, we talked about gates as a way to make students feel more like the campus is theirs, similar to Seattle U
11. strange pinch point
12. not sure where this fits - a former SCC foundation board member proposed to have each window well lit up with a different color using floodlights to create more welcoming feel at night.
13. this is a mote currently - a drop off and should be utilized in a more effective way as street spillover, stormwater management.
14. Can the entrances be moved elsewhere? Or is the hollow necessary for sunlight?
15. Community members on my tour were supportive of pedestrian bridges to improve student experience and safety
16. There needs to be activity here like a cafe or some sort of student activity as per Alex Brennan
17. Close this [pedestrian] [connection].
18. Consider a partial street vacation of Harvard between Pine and Olive. This will help increase a ped friendly environment between the student housing and campus, and will direct cars to enter the garage from Boylston and Olive.
19. Consider consolidating all parking underneath the STEM/ITEC Building parking garage and build new commercial / student housing building. Partner with housing developer to add workforce / affordable / market rate housing in building. Use non-student housing as a revenue generator for the College.
20. Remove sunken, gated-off area if no longer expected to serve a specific purpose (e.g. daycare)
21. If this cannot be widened, I support closing this ped connection

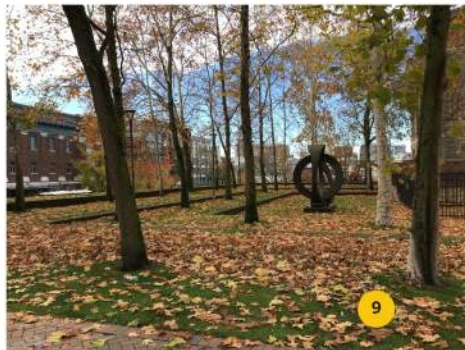
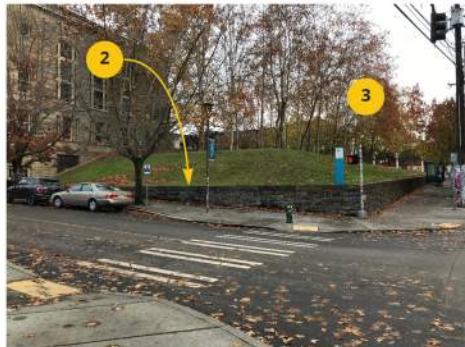
Comments - Existing Images

1. Staircase needs to be greatly expanded and made into a "grand" entrance for people parking in the garage and walking into campus.
2. This wall needs to be retained because it is aesthetically desirable and helps to define the space which is important when surrounded by roads that are nearly out of human scale. Stone wall can be cut to allow passageways through.
3. Can the Broadway PH have entrances facing different directions so that it feels the building is facing both Broadway and Harvard?
4. Bus stops need to be improved. The old stops in the plaza and on Howell that are now smoking areas should be removed
5. Great asset. Blank canvas for art. Think of the State Hotel mural in DT Seattle
6. These views should be everywhere and supported as campus standard.
7. These lantern banners can be redesigned to integrate with other "new campus identification materials" such as large campus signs
8. This pit is such a dead space. Get rid of it.
 - a. agreed!!
 - b. Agreed!
9. I support redevelopment of the plaza and glen, but strongly encourage creation of greenspace. I would like to see the retention of trees, but don't want this to limit how you create highly-functioning greenspace.
10. History of the art? Who made this? What does it symbolize? Do we need these or can they be replaced?
11. Artwork on campus is important to curate and continue
12. I support the use of more art throughout campus. See Greenway's comments [comments in SCC_CAC_PublicComment_111620.pdf] for recommendations related to art

Existing Conditions



Existing Conditions



Comments - Precedent Images

General Notes:

- I'd like to see precedent images that suggest gates / entrances to a semi-public space

Image 1:

- I really like the idea of breaking up the hardscape with greenery in this manner

Image 2:

- Image 2 scares me; makes me think of the confusion of cars/people near Pike Place

Image 6:

- if this type of raised crosswalk is [implemented] [on] Harvard, use muted colors

Image 13:

- Elevated spaces bisect open spaces in ways that they should not and aren't equitable

Image 21:

- I think this will a mgmt burden for the college.

Image 25:

- Both the central light and the usable art are tacky and in no way elegant.

Precedent Images



1. Different ground materials and textures suggest different uses
2. Street furniture with simple forms provides a variety of uses



1. Continuous pavement with different colors
2. Planting beds minimize street, maximize sidewalk
3. Sidewalk and street at the same level
4. Festival street opportunity



1. Gathering space cut into grade
2. Enclosed activity area adjacent to public spaces



1. Use slight changes in level to create hierarchy and break down large spaces



1. Use parklets as furniture within larger open spaces



1. Incorporate signage to reinforce identity of place
2. Use as a visual and physical orientation element
3. Celebratory elements (graduation pictures, etc.)



1. Use similar paving on the street and sidewalk to indicate slow areas



1. Highlight crossing areas with contrasting paving
2. Use raised crosswalks for added pedestrian safety



1. Similar materials with different colors - delineates different zones



1. Create new seating opportunities built off existing site features (brick pavers)
2. Use different materials to convey different uses (warm materials for sitting)



1. Put seating at the edge of green spaces to encourage active edges



1. Design art/sculptures for multiple uses - beautification and shelter from elements



1. Introduce stairs and/or ramps to navigate elevation changes
2. Use negative space for planting beds, site furniture



1. Tiered plaza/walkway creates different zones
2. Seating looking towards pathway, focal points, site features



1. Locate seating at the edge of green spaces to encourage active edges



1. Integrate landscaping and site furniture
2. Create small spaces for rest - be aware of the environmental noise in the area



1. Adjustable furniture gives users the option to create their own space
2. Plug-and-play variability



1. Design art/sculptures for multiple uses - beautification and shelter from elements



1. Introduce stairs and/or ramps to navigate elevation changes
2. Integrate stair and ramp landings to maximize space efficiency
3. Use negative space for planting beds, site furniture



1. Street furniture provides seating and planting beds
a. Street furniture is built into the sidewalk - is not movable
2. Use of heavy materials to imply permanence



1. Pavement types suggest different zones
2. Street furniture provides seating and planting beds
a. Street furniture is not integrals/structural to sidewalk - is movable/changeable
3. Multiple small/medium scale furniture pieces can have different features



1. Embedded sidewalk lighting
2. Light the extents of a path or zone



1. Low-level bollard fixtures to light walkways and delineate paths

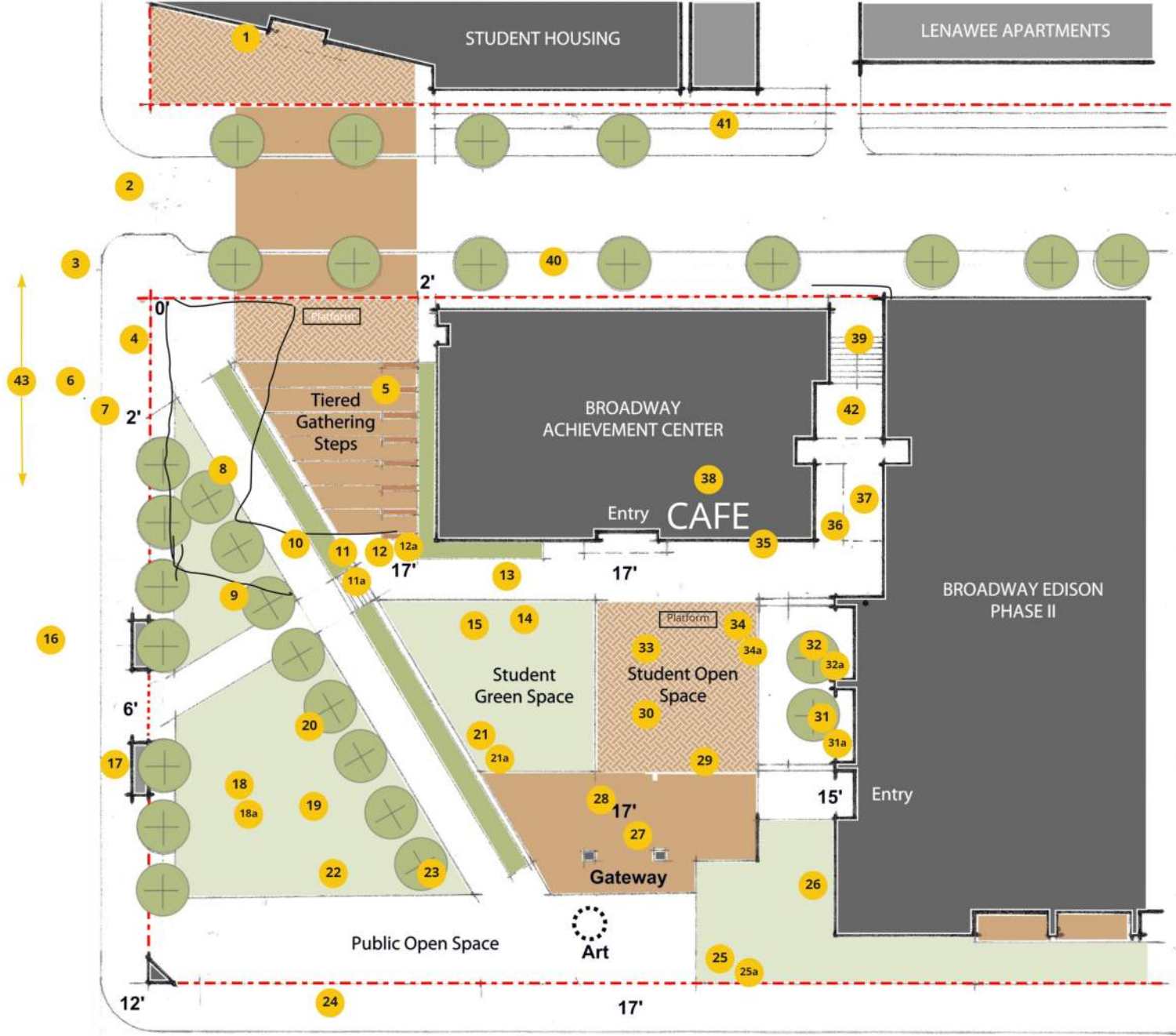


1. Large-scale lighting creates a focal point and gathering spot
2. Tying lighting and seating together

Comments - Concept 1

1. I'd like to see a larger notch out of the student [housing] building and have the plaza space relate to this space at the housing building corner.
2. Keep pedestrian crossing at usual location, for safety
3. Cars must be greatly slowed when moving from Pine to Harvard
4. Really like the thought of sloping up into the site, but 0-18' with half the site is a lot. How would that feel in reality?
5. LOVE the widened staircase. Have resting spaces in the tiers and many eyes on it from near BAC
6. Claim the SW corner with a terraced landscape that emphasizes views, gateway to pine and downtown - and material language to marriage to new housing building across street
7. Please go visit the Good Shepherd Center in Wallingford, look at the NW corner, you won't be disappointed. The entrance is a beautiful, uncovered stone pathway that meanders and has seating built into it. Possible inspiration for what to do with the wall.
8. Add obstructions on this pathway to keep pedestrians safe (vs. fast-moving e-bikes, bikes, scooters, skateboards) without losing access for wheelchairs.
9. I really like the idea of creating public space analogous to Seattle U. It's an absolute pleasure traversing through Seattle U's campus. I go out of my way to walk through their campus rather than along Madison. That should be an outcome/goal for your plaza redevelopment as well.
10. I'm really intrigued by the idea of a more gradual slope through campus. An ADA-accessible ramp is key to the plaza's transformation.
11. Incorporate green stormwater features as landscape art incorporated with real art to define green spaces and provide WQ benefit.
 - a. I second this comment
12. Speakers' platform? Tiered gathering steps would be conducive to public discourse
 - a. *thumbs up* A speakers platform could not only serve a purpose during protests but could also be used by teachers if classes were held outside.
13. Add! gateway
14. Financial District and Shard District in London are amazing references and inspiration for small pedestrian moments.
15. It's key that the exterior of campus create a sense of belonging that makes students feel welcome!
16. Micro retail would ideally have spaces that stay open late to keep human traffic and eyes in the area - Such as streetfood.
17. Maintaining greenspace, greened areas at 40-50% min, is super important. Even the grey/beige areas on this concept must/need to include green planted areas.
18. Use whimsy throughout all these rethought spaces to allow people to make connections with art, treatments, signage, features that unite the space. Could be motifs, animals, etc.
 - a. YES!
19. You can retain greenspace, but not if it remains as uninviting and off-putting as it currently does. This space should be a noticeable respite and it's not currently.
20. Meandering path could be more attractive and wheelchair accessible
21. A hierarchy of space that emphasizes gathering - a central area that allows for large scale gathering
 - a. I second this comment.
22. These open spaces have to accommodate protests, farmer's markets, and daily student activities
23. I liked your suggestions in the inspiration images for soft, low lighting. I would like to see that lighting incorporated throughout the plaza and Harvard.
24. Add Street trees off the campus parcel between the curb and ped way (Broadway). Ensure Pine Street, street trees remain and are preserved.
25. The hardscape along Broadway would be the most used for public gathering and "soap box" events. This would be important to think what is the most accessible space along the street.
 - a. I agree with this comment.
26. Can the interface of facade to plaza be affected??
27. Like the idea of an iconic SCC backdrop. The big W at UW Tacoma is an inspiration.
28. Love the informal kiosk / entrepreneurship and incubator possibility for this space
29. Question: how do larger public gatherings like the Farmers Market have access to and effectively utilize this space?
30. Picnic tables or informal outdoor eating space would be great. Can it be covered?
31. Anyway to fill this space? It detracts so much unless you have some creative use for it.
 - a. +1
32. Maintaining this sunken area makes little sense. Is this really a necessary / primary entrance into the BE building?
 - a. I agree. It must be removed!
33. Ameer and students want a covered outdoor space because Seattle is rainy
34. Possible speakers platform or natural convening space?
 - a. I was thinking of a speakers platform near the tiered gathering steps given that people may naturally assemble there, keeping this area more protected for students
35. Add a cafe adjacent to the "student space" that allows for proximate spillover into the open space
36. I'm supportive of pedestrian skywalk to connect library from AC to II for students
37. This connection could be an asset, not vulnerability. It could provide an intimate space for activities or a small restaurants. Needs to be shut down at night though
38. I really like the idea of incorporating active uses on the ground floor to add the deep connectivity that Jaime talked about!
39. This space does not feel welcoming, even during full daylight.
40. There's so much opportunity for improving Harvard. Add low-level lighting per your inspo images.
41. Consider Fulton Center(San Francisco) for making open space from the student housing open space
42. Support closing off the staircase to Harvard
43. Activate the Pine street frontage

Concept 1



Campus Open Space

Open Space
Existing College
open space = 37% of
parcel areas owned

SCC - Propose
Decrease to 25%

Designated
Open Spaces

Designated Open Spaces
South Plaza/Green
Howell Street Plaza
Student Center Plaza

SCC - No proposed
Changes

Hardscape

Hardscape
Existing College
hardscape = 75% of
owned Open Space

SCC - Target a Decrease
to 65% of Open Space

Greenscape

Greenscape
Existing College landscape
= 25% of owned Open
Space

SCC - Target an Increase to
35% of Open Space

Harvard & Pine
Crossing



For ped safety,
minimize the area of
the shaded
"crossing" between
the plaza/tiered
steps and the
housing building

The Glen



Bus Stop



Yes, please improve the
bus stops on campus.
Shelter from the rain is key.
May be an opportunity to
incorporate art or campus
signage/placemaking.

Amenities to
Include



Lighting,
Materials, Etc.



Community Use
Space



Activites to be
Accomdated



Safety



Other



Other

