
Madison Middle School

2018 PARKING DEPARTURE REQUEST



REQUESTED DEPARTURE

Parking quantity

MADISON MIDDLE SCHOOL PROJECT OVERVIEW

Seattle Public Schools will install (4) portable classrooms to meet increased enrollment – (2) portables are proposed to be located in the North parking lot.

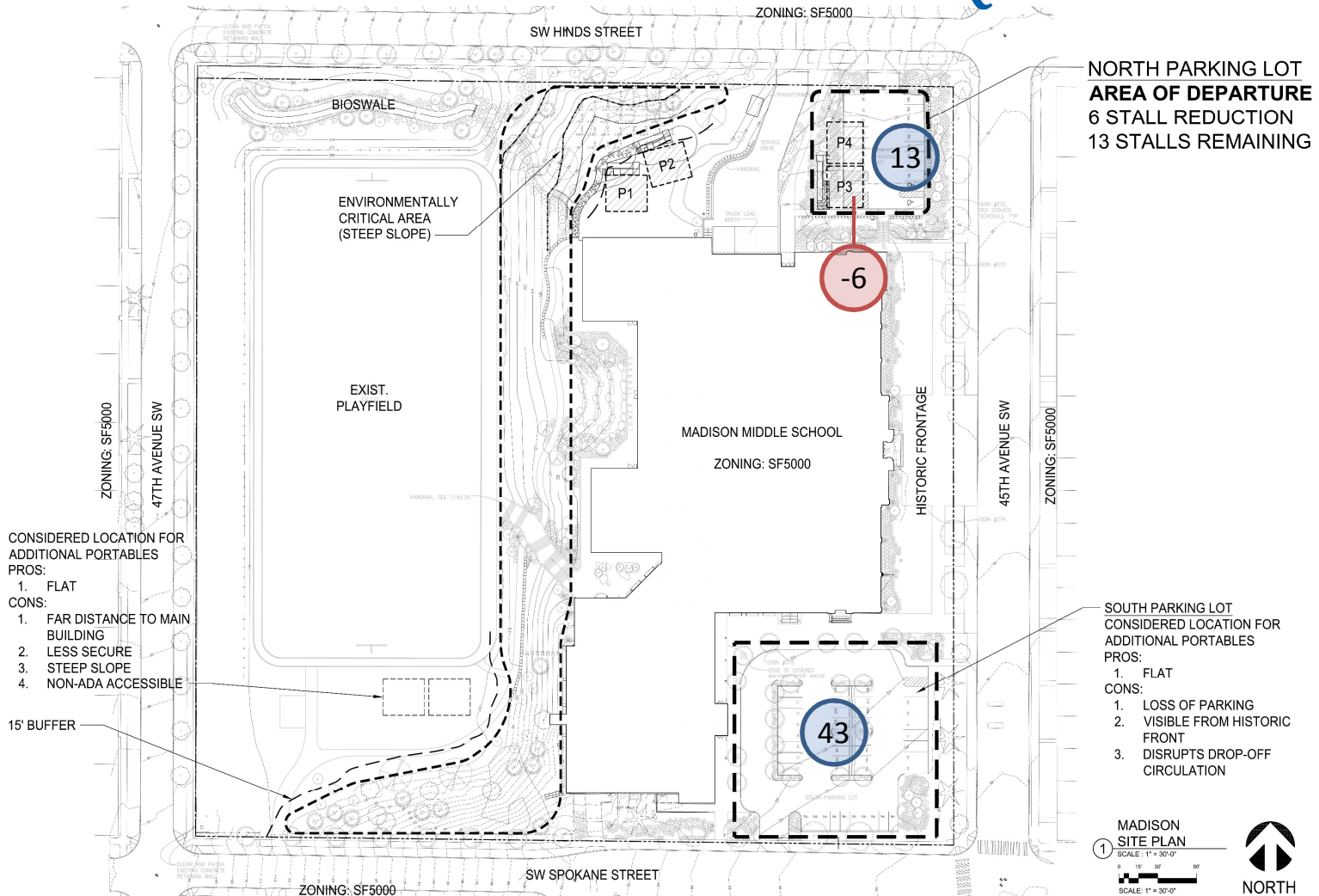
Madison Middle School

Capacity Overview & Need

- Madison Middle School enrollment has been increasing yearly.
- Programs offered at this school utilize classroom space at Madison MS in a way that affects available building capacity; separate classrooms are needed for the programs.
- Capacity management alternatives are considered prior to recommending placing portable classrooms at a school:
 - Utilize available vacant classroom space;
 - Repurpose/reconfigure non-homeroom spaces to create a classroom;
 - Other solutions such as sharing of classroom space, co-teaching, and larger class sizes.
- Enrollment projections for school year 2018-19 is for another increase in enrollment of an additional 110 students (4-5 additional classrooms).
- Enrollment projections beyond 2018-19 show continued increase and continued need for the added classroom space.
- SPS Capital Planning is evaluating long-term solutions to capacity at this school.

Madison Middle School

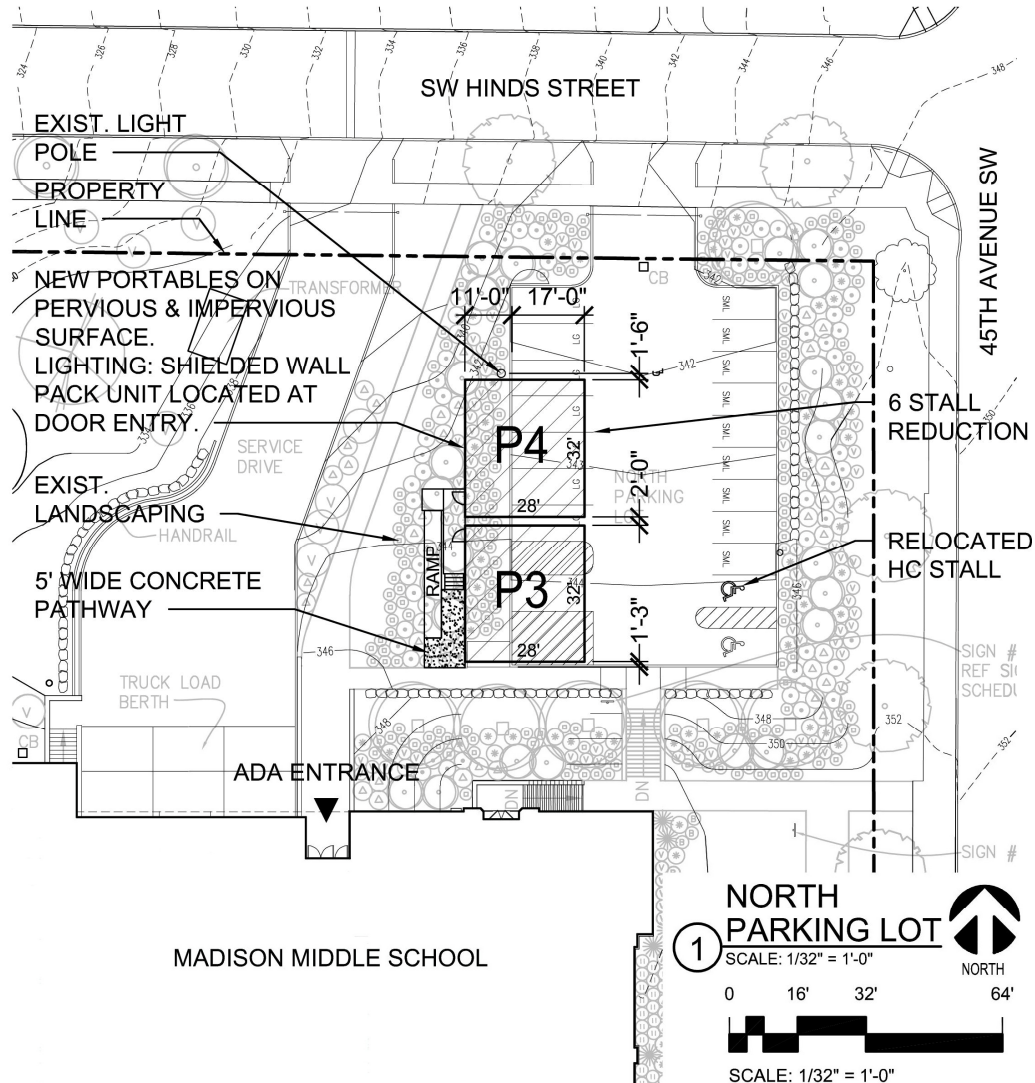
2018 PARKING DEPARTURE REQUEST



**DEPARTURE REQUEST OF 6 PARKING SPACES
FOR A TOTAL OF 56 ON-SITE PARKING SPACES**

Madison Middle School

2018 PARKING DEPARTURE REQUEST

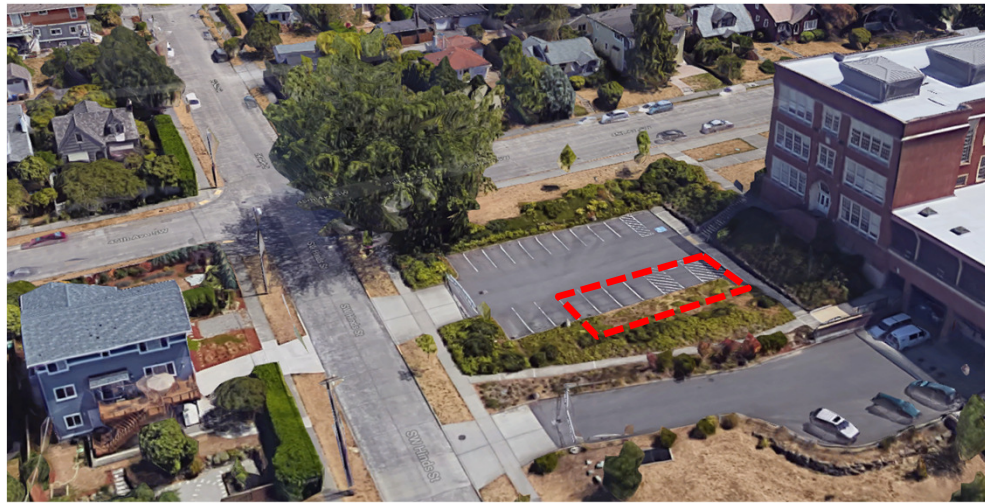


Madison Middle School

2018 PARKING DEPARTURE REQUEST



VIEW FROM SW HINDS STREET LOOKING S



AERIAL VIEW FROM SW HINDS STREET LOOKING SE

Madison Middle School

Departure Requested: Parking Requirements

Parking Requirements	SMC 23.54 Quantity and Design Standards for Access, Off-Street Parking, and Solid Waste Storage	
Required Parking Stalls	SMC 23.54.015 Required Parking Table C – Parking for Public Uses and Institutions Row N – Schools, Public Elementary and Secondary	
	<hr/> Parking Required by Code	160 Spaces
Parking Provided On-Site	2003 Departure Decision	62 Spaces
Departure Requested Parking	On-Site Parking	62 Spaces
	<hr/> Proposed Parking Space Departure	-6 Spaces
	Proposed Total Parking Spaces	56 Spaces

**Departure Request of 6 Parking Spaces
for a Total of 56 On-Site Parking Spaces**

Parking Study Slides placeholder

DRAFT

Madison Middle School

2018 PARKING DEPARTURE REQUEST

Summary

- An increase in student enrollment requires capacity expansion.
- There are limited expansion options and locations for portables.
- *Transportation comment/note here* (if relevant).
- Departure Request: 6 spaces for a total of 56 on-site parking spaces.