

Seattle Public Schools

MADISON MIDDLE SCHOOL



MADISON MIDDLE SCHOOL ENTRANCE FROM 45TH AVE SW



PROJECT REVIEW

Seattle Public Schools

MADISON MIDDLE SCHOOL



PROJECT SITE: MADISON
MIDDLE SCHOOL

WEST SEATTLE



Seattle Public Schools

MADISON MIDDLE SCHOOL



- ROTATION OF BUILDING TO ORIENT TO VIEWS
- LOCATION OF EXISTING PORTABLES ON SITE
- LOCATION OF PROPOSED ADDITION.
- 2005 ADDITION (BASSETTI ARCHITECTS)
- ORIGINAL 1929 MADISON MIDDLE SCHOOL (FLLOYD NARAMORE)
- EXISTING 1973 GYM ADDITION (GRANT, COPELAND, CHERVENAK & ASSOC.)



3429 45TH AVE SW

Seattle Public Schools

MADISON MIDDLE SCHOOL

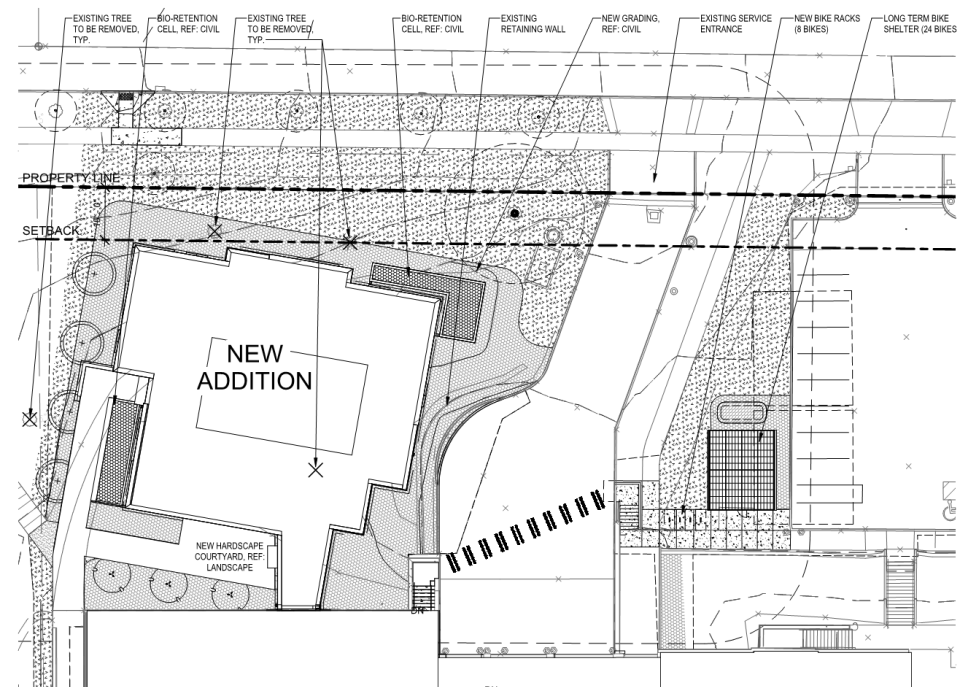
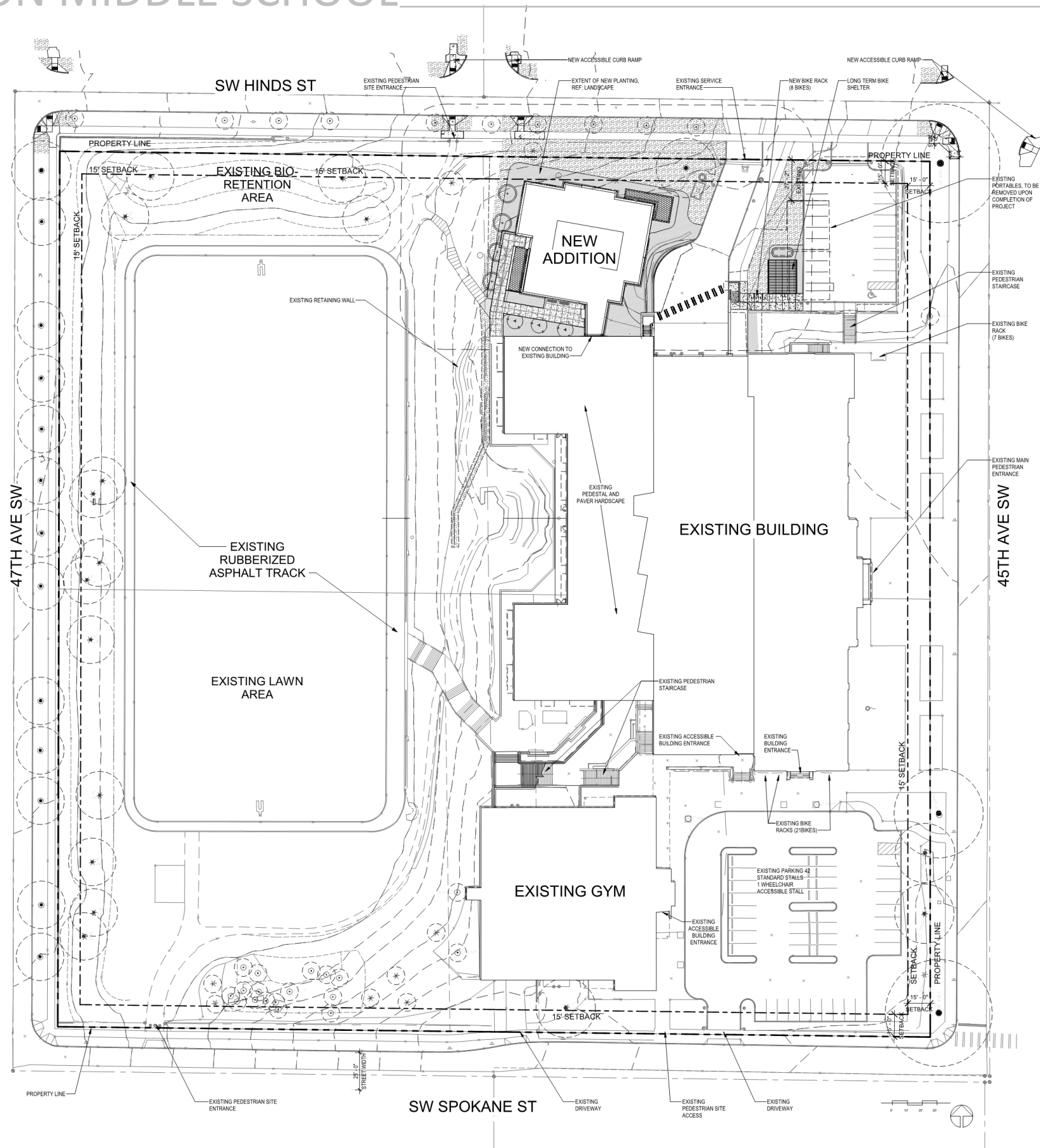
PROPOSED SITE LOCATION ALONG
SW HINDS ST FRONTAGE



AERIAL VIEW LOOKING SOUTHEAST



MADISON MIDDLE SCHOOL



EXISTING MATERIALITY

Seattle Public Schools

MADISON MIDDLE SCHOOL



EXISTING STONE DETAILING



EXISTING CAST IN PLACE CONCRETE



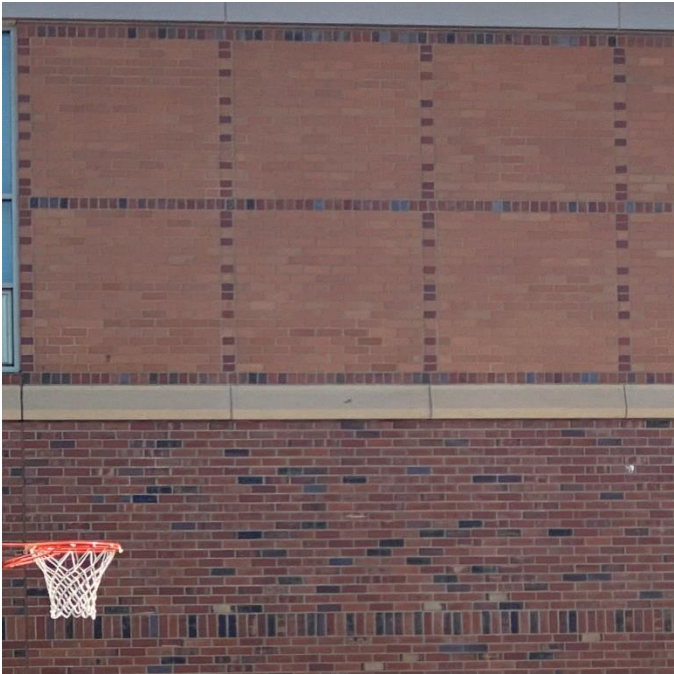
EXISTING METAL PANEL



EXISTING STONE DETAIL



EXISTING SUN SHADE DEVICES



EXISTING BRICK DETAILING



PROPOSED MATERIALITY

Seattle Public Schools

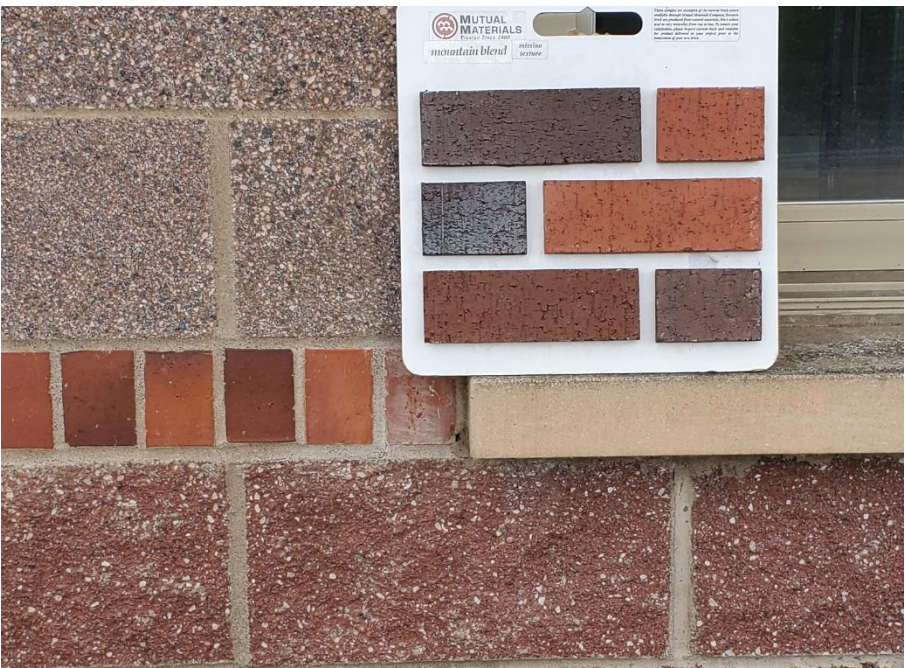
MADISON MIDDLE SCHOOL



PROPOSED ALUMINUM COMPOSITE METAL PANEL



PROPOSED BRICK BLEND VS 1920 ORIGINAL BUILDING



PROPOSED BRICK BLEND VS 2005 ADDITION



PROPOSED BOX RIB METAL PANEL



PROPOSED SUN SHADE DETAILING



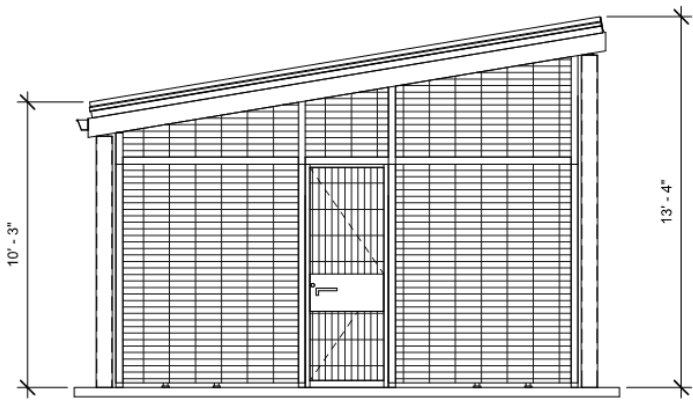
PROPOSED FIBERGLASS WINDOWS



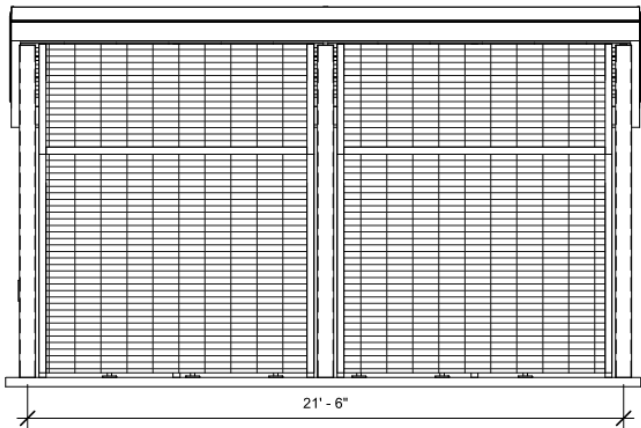
PROPOSED EXTERIOR DOWN LIGHTING

Seattle Public Schools

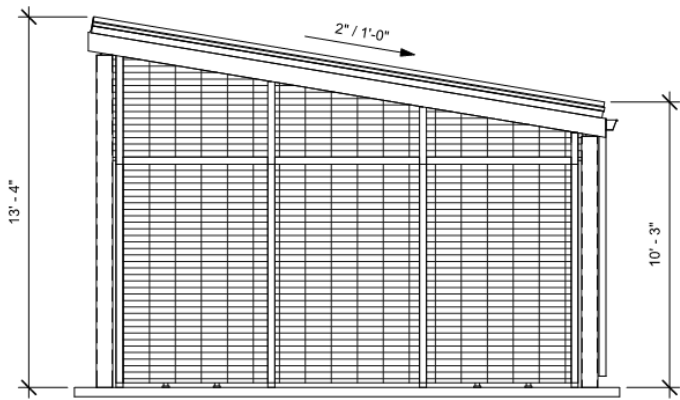
MADISON MIDDLE SCHOOL LONG TERM BIKE PARKING



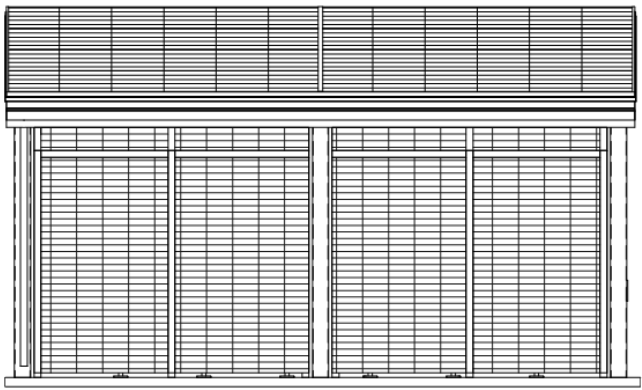
BIKE ENCLOSURE – SOUTH ELEVATION



BIKE ENCLOSURE – EAST ELEVATION



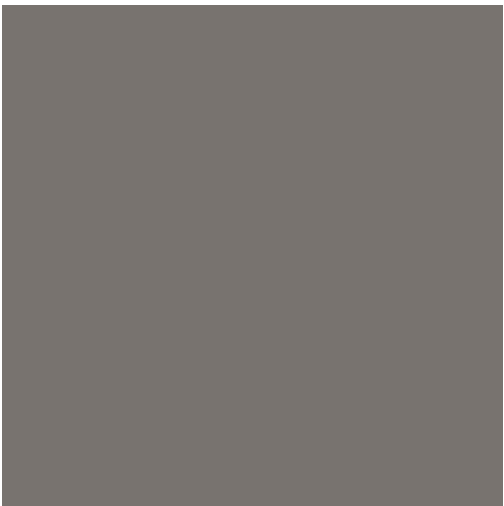
BIKE ENCLOSURE – NORTH ELEVATION



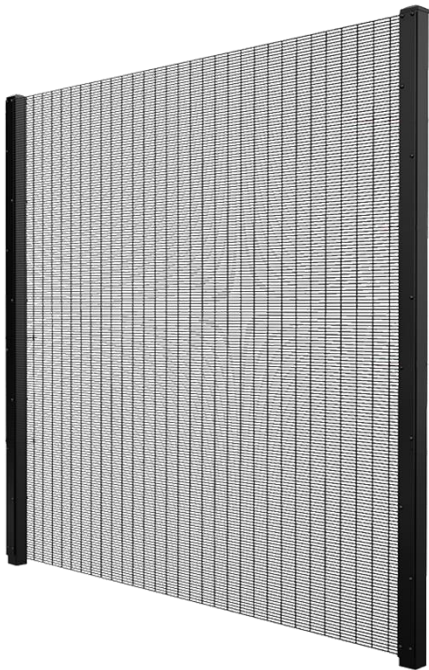
BIKE ENCLOSURE – WEST ELEVATION



PROPOSED TRANSLUCENT PANEL ROOFING



PROPOSED WIRE MESH COLOR



PROPOSED WIRE MESH



PROPOSED WIRE MESH GATE



PROPOSED WIRE MESH

PROPOSED PLANTING

Seattle Public Schools

MADISON MIDDLE SCHOOL



PROPOSED CAREX OBNUPTA –
BIORETENTION PLANTERS



PROPOSED IRIS TENAX -
BIORETENTION PLANTERS



PROPOSED ABELIA SHRUB -
GROUND COVER PLANTING



PROPOSED BERBERIS THUNBERGII -
GROUND COVER PLANTING



PROPOSED CORNUS SERICEA KELSEYI -
GROUND COVER PLANTING



PROPOSED LONICERA PILEATA –
GROUND COVER PLANTING



PROPOSED MAHONIA REPENS –
GROUND COVER PLANTING



PROPOSED POLYSTICHUM MUNITUM –
GROUND COVER PLANTING



PROPOSED
CERCIDIPHYLLUM
JAPONICUM –
TREE PLANTING



PROPOSED AUTUMN BRILLIANCE –
TREE PLANTING



PROPOSED GRACILLIS –
TREE PLANTING

PROPOSED NEW ADDITION

Seattle Public Schools

MADISON MIDDLE SCHOOL

OUTLINE OF PROPOSED NEW ADDITION
VIEWED FROM ALONG 45TH AVE SW



VIEW LOOKING WEST FROM ALONG 45TH AVE SW

LANDMARKS PRESENTATION | 01.12.21



Seattle Public Schools

MADISON MIDDLE SCHOOL



VIEW LOOKING WEST FROM ALONG 45TH AVE SW – EXISTING PORTABLE LOCATIONS



Seattle Public Schools

MADISON MIDDLE SCHOOL



VIEW LOOKING WEST FROM ALONG 45TH AVE SW – PROPOSED NEW ADDITION & BIKE SHELTER



Seattle Public Schools

MADISON MIDDLE SCHOOL



VIEW LOOKING WEST FROM ALONG 45TH AVE SW – PROPOSED NEW ADDITION & BIKE SHELTER



Seattle Public Schools

MADISON MIDDLE SCHOOL



EXISTING NORTH ELEVATION ALONG SW HINDS ST



Seattle Public Schools

MADISON MIDDLE SCHOOL



EXISTING NORTH ELEVATION ALONG SW HINDS ST



Seattle Public Schools

MADISON MIDDLE SCHOOL

- PROPOSED LONG TERM BIKE PARKING SHELTER
- PROPOSED ADDITION STEPS DOWN HILL. WILL BE SHORTER IN HEIGHT THAN 2003 ADDITION
- BRICK COLOR AND SIZE TO COMPLEMENT EXISTING
- WINDOW PROPORTIONS COMPLEMENT EXISTING
- PROPOSED ADDITION USING CORNER WINDOWS TO PROVIDE SITELINES OF PROMINENT VIEWS



NORTH ELEVATION ALONG SW HINDS ST – BRICK CORNER VOLUMES WITH VERTICAL METAL SIDING

Seattle Public Schools

MADISON MIDDLE SCHOOL



PERSPECTIVE RENDERING FROM ALONG SW HINDS ST – BRICK CORNER VOLUMES WITH VERTICAL METAL SIDING



Seattle Public Schools

MADISON MIDDLE SCHOOL

BRICK DETAILING TO
COMPLEMENT EXISTING

PROPOSED ADDITION MATERIALITY
SHOULD NOT COMPETE /
CONTRAST WITH ORIGINAL

METAL PANEL TO
COMPLEMENT EXISTING
METAL PANEL USAGE



WEST ELEVATION FROM ATHLETIC FIELD – BRICK CORNER VOLUMES WITH VERTICAL METAL SIDING



Seattle Public Schools

MADISON MIDDLE SCHOOL



PERSPECTIVE RENDERING FROM ATHLETIC TRACK TOWARDS NEW ADDITION – BRICK CORNER VOLUMES WITH VERTICAL METAL SIDING



Seattle Public Schools

MADISON MIDDLE SCHOOL



PERSPECTIVE RENDERING FROM INSIDE 2 STORY HALLWAY CONNECTION



APPENDIX

ALTERNATE CONNECTION EXPLORATION

MADISON MIDDLE SCHOOL



Seattle Public Schools

MADISON MIDDLE SCHOOL



VIEW LOOKING WEST FROM ALONG 45TH AVE SW – PROPOSED NEW ADDITION WITH ONE STORY CONNECTION & BIKE SHELTER



Seattle Public Schools

MADISON MIDDLE SCHOOL



VIEW LOOKING WEST FROM ALONG 45TH AVE SW – PROPOSED NEW ADDITON WITH ONE STORY CONNECTION & BIKE SHELTER

LANDMARKS PRESENTATION | 01.12.21

studio **MENG**
STRAZZARA



Seattle Public Schools

MADISON MIDDLE SCHOOL

BRICK DETAILING TO
COMPLEMENT EXISTING

PROPOSED ADDITION MATERIALITY
SHOULD NOT COMPETE /
CONTRAST WITH ORIGINAL

METAL PANEL TO
COMPLEMENT EXISTING
METAL PANEL USAGE



WEST ELEVATION FROM ATHLETIC FIELD – BRICK CORNER VOLUMES WITH VERTICAL METAL SIDING – ONE STORY CONNECTION



Seattle Public Schools

MADISON MIDDLE SCHOOL



PERSPECTIVE RENDERING FROM ATHLETIC TRACK TOWARDS NEW ADDITION – BRICK CORNER VOLUMES WITH VERTICAL METAL SIDING – ONE STORY CONNECTION



OPTIONS WITH BIKE
SHELTER REMOVED

Seattle Public Schools

MADISON MIDDLE SCHOOL



VIEW LOOKING WEST FROM ALONG 45TH AVE SW – PROPOSED NEW ADDITION – ONE STORY



Seattle Public Schools

MADISON MIDDLE SCHOOL



VIEW LOOKING WEST FROM ALONG 45TH AVE SW – PROPOSED NEW ADDITION – TWO STORY



Seattle Public Schools

MADISON MIDDLE SCHOOL



VIEW LOOKING WEST FROM ALONG 45TH AVE SW – PROPOSED NEW ADDITION – ONE STORY



Seattle Public Schools

MADISON MIDDLE SCHOOL



VIEW LOOKING WEST FROM ALONG 45TH AVE SW – PROPOSED NEW ADDITION – TWO STORY



Seattle Public Schools

MADISON MIDDLE SCHOOL

PROPOSED ADDITION
STEPS DOWN HILL. WILL BE SHORTER
IN HEIGHT THAN 2003 ADDITION

BRICK COLOR AND SIZE TO
COMPLEMENT EXISTING

WINDOW PROPORTIONS
COMPLEMENT EXISTING

PROPOSED ADDITION USING
CORNER WINDOWS TO PROVIDE
SITELINES OF PROMINENT VIEWS



NORTH ELEVATION ALONG SW HINDS ST – BRICK CORNER VOLUMES WITH VERTICAL METAL SIDING



Seattle Public Schools

MADISON MIDDLE SCHOOL



PERSPECTIVE RENDERING FROM ALONG SW HINDS ST – BRICK CORNER VOLUMES WITH VERTICAL METAL SIDING



ONE STORY VS TWO STORY

PROS & CONS

Seattle Public Schools

MADISON MIDDLE SCHOOL

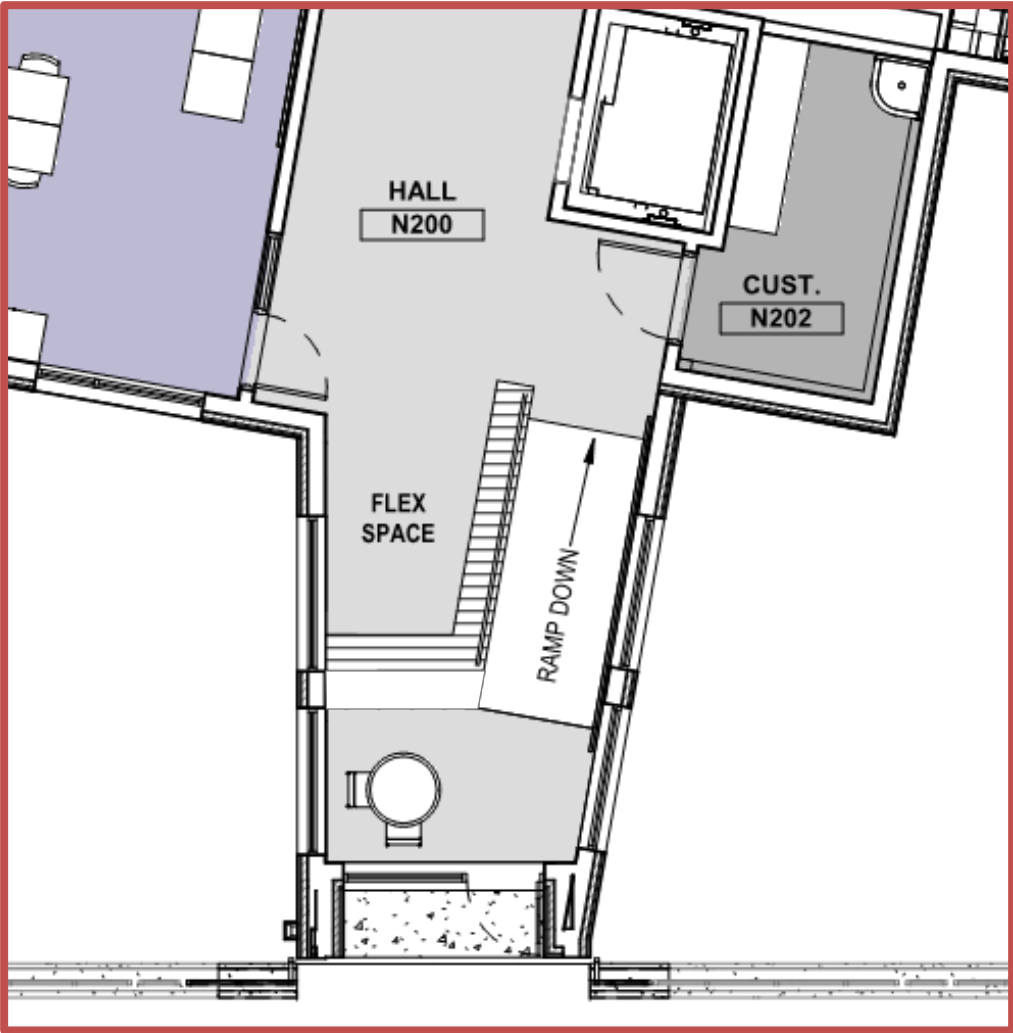
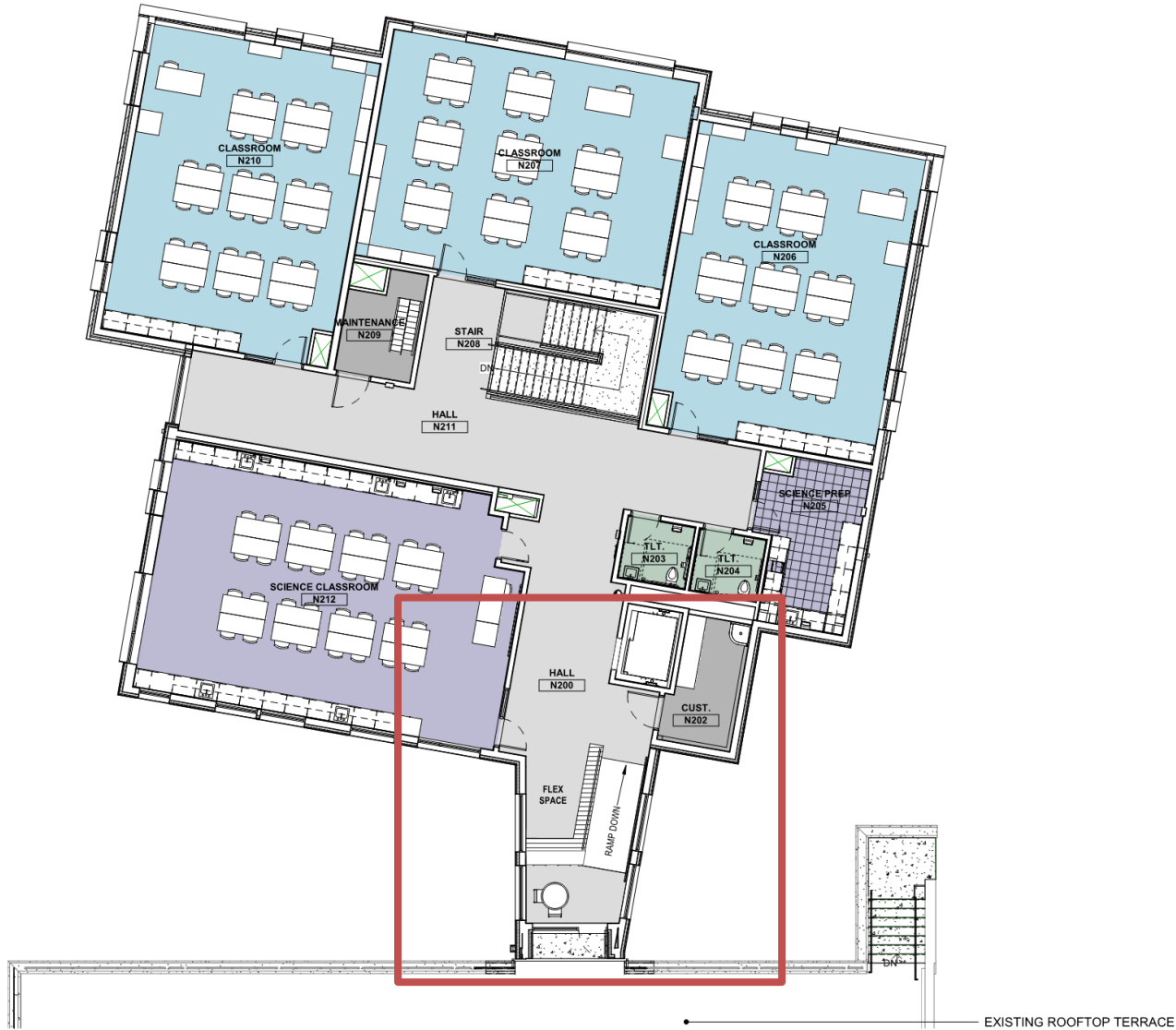


PERSPECTIVE RENDERING FROM INSIDE 2 STORY HALLWAY CONNECTION



Seattle Public Schools

MADISON MIDDLE SCHOOL



PRO:

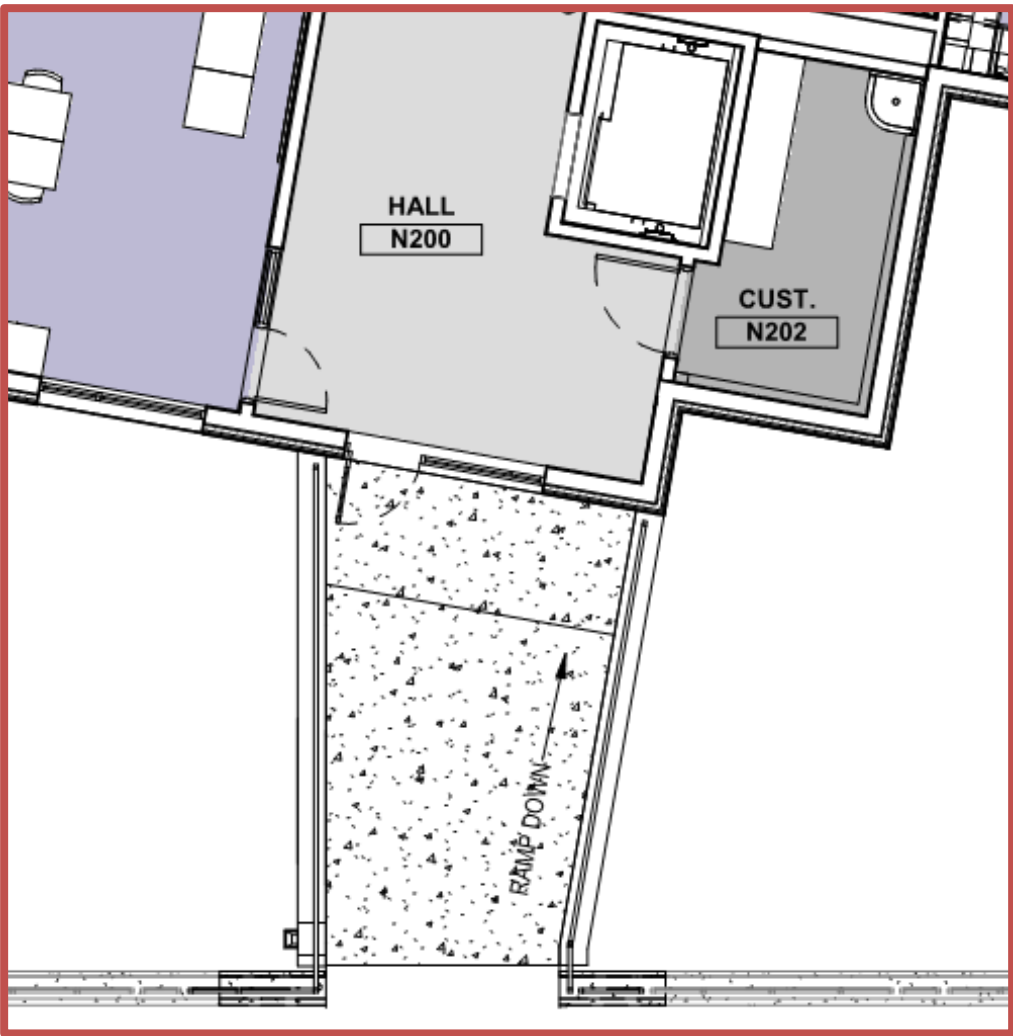
- 1. INTERIOR RAMP
- 2. ADDITIONAL BREAKOUT SPACE
- 3. STUDENT LEARNING ENVIRONMENT FLEXIBILITY

CON:

- 1. REDUCED TRANSPARENCY BETWEEN BUILDINGS
- 2. ADDITIONAL COST

Seattle Public Schools

MADISON MIDDLE SCHOOL



PRO:

- 1. LIGHTER CONNECTION TO EXISTING STRUCTURE
- 2. LESS COST
- 3. MORE TRANSPARENCY BETWEEN BUILDINGS

CON:

- 1. EXTERIOR RAMP EXPOSED TO ELEMENTS
- 2. LOSS OF LEARNING ENVIRONMENT

Seattle Public Schools

MADISON MIDDLE SCHOOL



PRO:

1. INTERIOR RAMP
2. ADDITIONAL BREAKOUT SPACE
3. STUDENT LEARNING ENVIRONMENT FLEXIBILITY

CON:

1. REDUCED TRANSPARENCY BETWEEN BUILDINGS
2. ADDITIONAL COST

Seattle Public Schools

MADISON MIDDLE SCHOOL



PRO:

1. LIGHTER CONNECTION TO EXISTING STRUCTURE
2. LESS COST
3. MORE TRANSPARENCY BETWEEN BUILDINGS

CON:

1. EXTERIOR RAMP EXPOSED TO ELEMENTS
2. LOSS OF LEARNING ENVIRONMENT