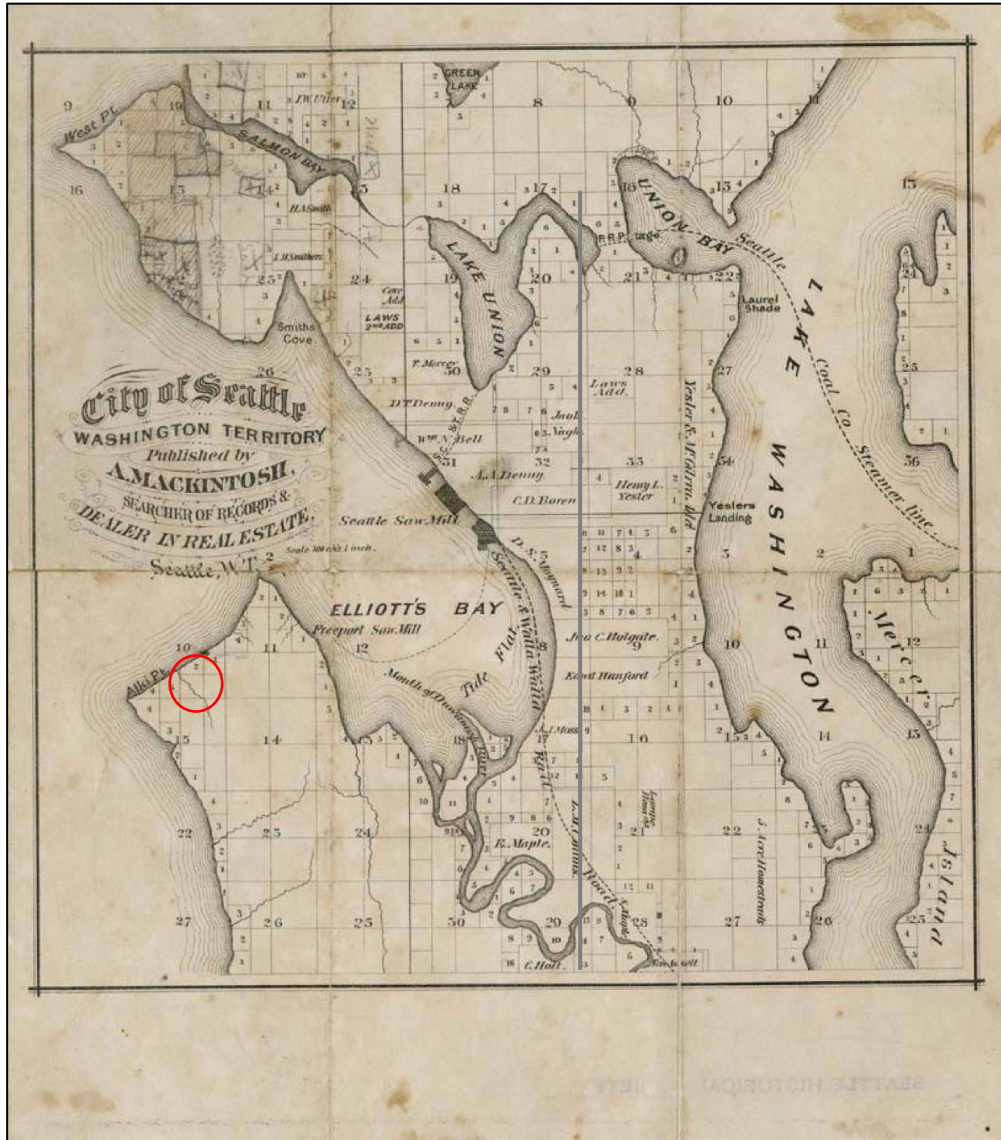


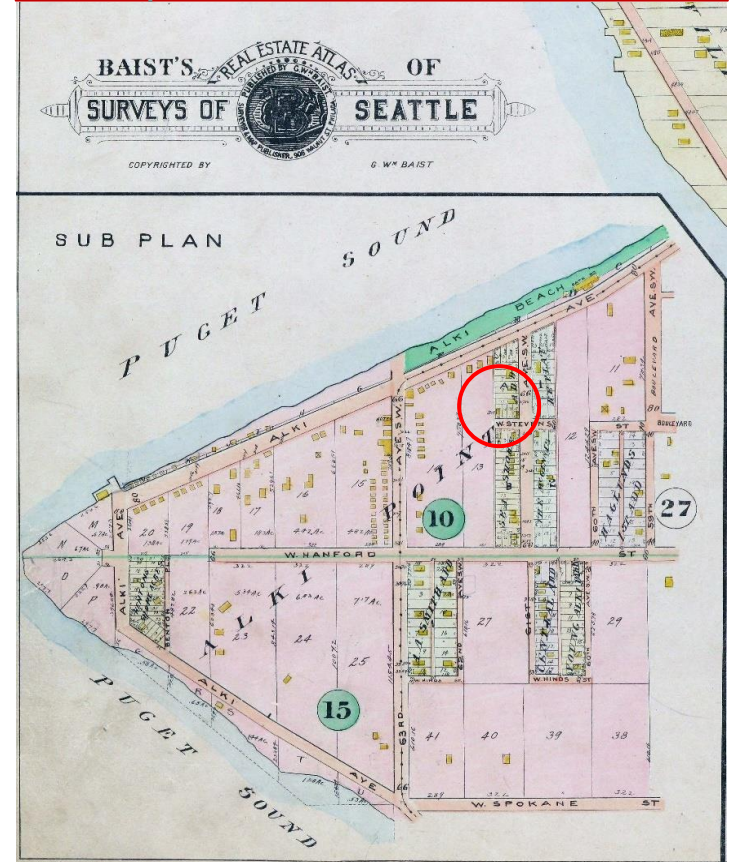
**Alki Elementary School
Seattle Landmark Nomination
April 20, 2022**

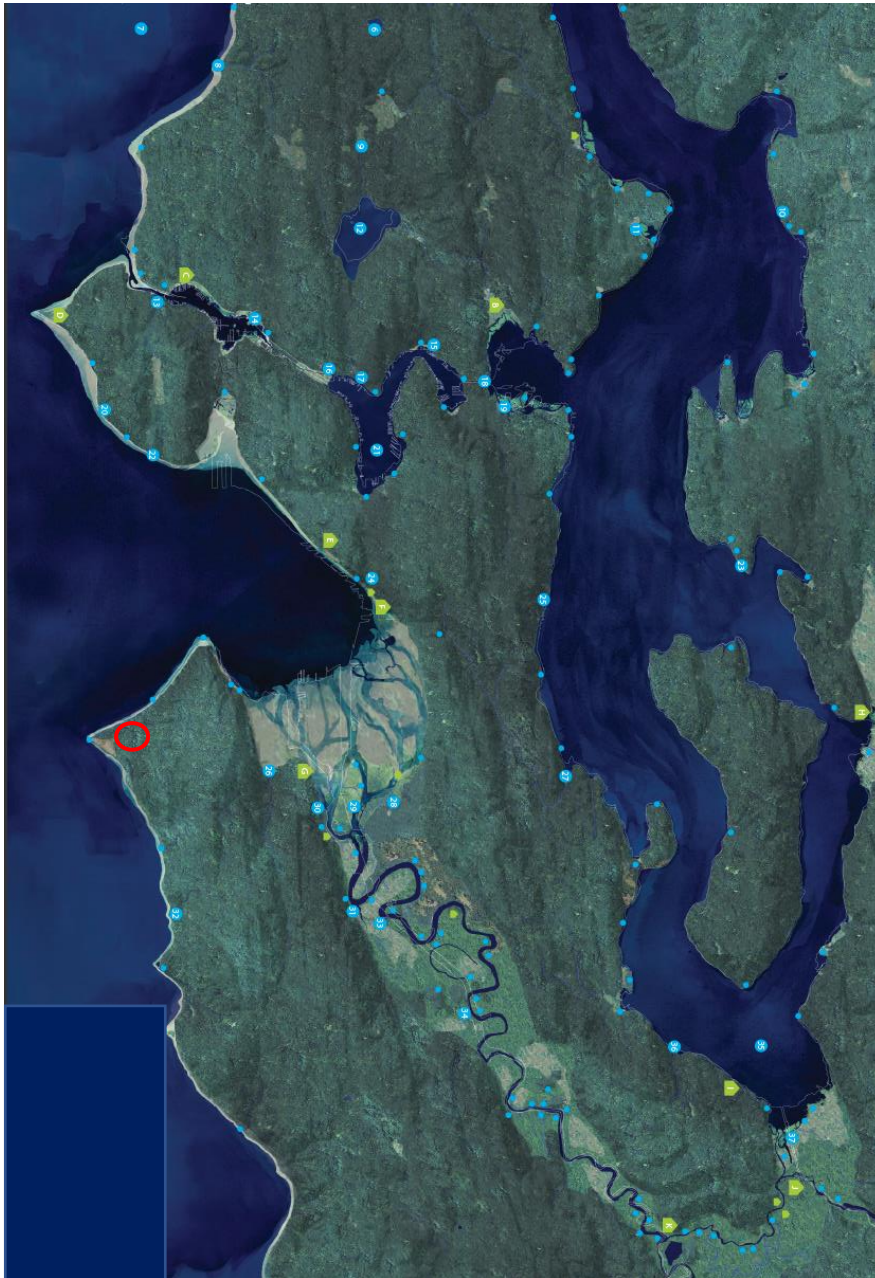
BOLA Architecture + Planning
Seattle

The Seattle Area, 1870



Alki, ca. 1912





Coast Salish Place Names

Village Sites

- A. $\text{h}^{\text{a}}\text{w}^{\text{a}}\text{d}$ - The Growing Place
- B. $\text{h}^{\text{a}}\text{w}^{\text{a}}\text{d}$ - Little Green Island
- C. $\text{h}^{\text{a}}\text{w}^{\text{a}}\text{d}$ - Tucked Away Inside
- D. $\text{h}^{\text{a}}\text{w}^{\text{a}}\text{d}$ - Brush Spread on the Water
- E. $\text{h}^{\text{a}}\text{w}^{\text{a}}\text{d}$ - Little Prairie
- F. $\text{h}^{\text{a}}\text{w}^{\text{a}}\text{d}$ - Little Crossing-Over Place
- G. $\text{h}^{\text{a}}\text{w}^{\text{a}}\text{d}$ - Herring House
- H. $\text{h}^{\text{a}}\text{w}^{\text{a}}\text{d}$ - Water at the Head of a Bay
- I. $\text{h}^{\text{a}}\text{w}^{\text{a}}\text{d}$ - Swimming Hole
- J. $\text{h}^{\text{a}}\text{w}^{\text{a}}\text{d}$ - Conference
- K. $\text{h}^{\text{a}}\text{w}^{\text{a}}\text{d}$ - Meeting of Rivers

Water-related Places

- 1. $\text{h}^{\text{a}}\text{w}^{\text{a}}\text{d}$ - Elderberry House
- 2. $\text{h}^{\text{a}}\text{w}^{\text{a}}\text{d}$ - Farm
- 3. $\text{h}^{\text{a}}\text{w}^{\text{a}}\text{d}$ - Deep Water Hole
- 4. $\text{h}^{\text{a}}\text{w}^{\text{a}}\text{d}$ - In the Rock
- 5. $\text{h}^{\text{a}}\text{w}^{\text{a}}\text{d}$ - Backstage on the Side
- 6. $\text{h}^{\text{a}}\text{w}^{\text{a}}\text{d}$ - Calmed Down a Little
- 7. $\text{h}^{\text{a}}\text{w}^{\text{a}}\text{d}$ - Sun Water
- 8. $\text{h}^{\text{a}}\text{w}^{\text{a}}\text{d}$ - Dropped Down
- 9. $\text{h}^{\text{a}}\text{w}^{\text{a}}\text{d}$ - Red River
- 10. $\text{h}^{\text{a}}\text{w}^{\text{a}}\text{d}$ - Water Falling Over an Edge
- 11. $\text{h}^{\text{a}}\text{w}^{\text{a}}\text{d}$ - Digging in the Water
- 12. $\text{h}^{\text{a}}\text{w}^{\text{a}}\text{d}$ - Transition Unknown
- 13. $\text{h}^{\text{a}}\text{w}^{\text{a}}\text{d}$ - Lost of Water
- 14. $\text{h}^{\text{a}}\text{w}^{\text{a}}\text{d}$ - Spots Canal Power
- 15. $\text{h}^{\text{a}}\text{w}^{\text{a}}\text{d}$ - Croaking
- 16. $\text{h}^{\text{a}}\text{w}^{\text{a}}\text{d}$ - Canal
- 17. $\text{h}^{\text{a}}\text{w}^{\text{a}}\text{d}$ - Thrashed Water
- 18. $\text{h}^{\text{a}}\text{w}^{\text{a}}\text{d}$ - Carry a Canoe
- 19. $\text{h}^{\text{a}}\text{w}^{\text{a}}\text{d}$ - Baby Trench
- 20. $\text{h}^{\text{a}}\text{w}^{\text{a}}\text{d}$ - Cold Creek
- 21. $\text{h}^{\text{a}}\text{w}^{\text{a}}\text{d}$ - Small Lake
- 22. $\text{h}^{\text{a}}\text{w}^{\text{a}}\text{d}$ - River Clear Creek
- 23. $\text{h}^{\text{a}}\text{w}^{\text{a}}\text{d}$ - By the Water
- 24. $\text{h}^{\text{a}}\text{w}^{\text{a}}\text{d}$ - Spring
- 25. $\text{h}^{\text{a}}\text{w}^{\text{a}}\text{d}$ - Sun Grass Point
- 26. $\text{h}^{\text{a}}\text{w}^{\text{a}}\text{d}$ - Spring
- 27. $\text{h}^{\text{a}}\text{w}^{\text{a}}\text{d}$ - Cooking Fish on a Rock
- 28. $\text{h}^{\text{a}}\text{w}^{\text{a}}\text{d}$ - Canoe Opening
- 29. $\text{h}^{\text{a}}\text{w}^{\text{a}}\text{d}$ - Tied Up
- 30. $\text{h}^{\text{a}}\text{w}^{\text{a}}\text{d}$ - Crying Face
- 31. $\text{h}^{\text{a}}\text{w}^{\text{a}}\text{d}$ - Fish Crying Rock
- 32. $\text{h}^{\text{a}}\text{w}^{\text{a}}\text{d}$ - Captured
- 33. $\text{h}^{\text{a}}\text{w}^{\text{a}}\text{d}$ - Little Beach at the Tail End
- 34. $\text{h}^{\text{a}}\text{w}^{\text{a}}\text{d}$ - Metal House
- 35. $\text{h}^{\text{a}}\text{w}^{\text{a}}\text{d}$ - Lake
- 36. $\text{h}^{\text{a}}\text{w}^{\text{a}}\text{d}$ - Dangling
- 37. $\text{h}^{\text{a}}\text{w}^{\text{a}}\text{d}$ - Marbles

Place names are either proof of presence, evidence of meeting, evidence of memory, or warning. The place names on this map tell us the historical names of the Duwamish River and its tributaries. They are the names that the Coast Salish people used to call the river and its tributaries.

Waterlines is a project of the Burke Museum. Please visit us at www.burkemuseum.org/waterlines



Alki, "Birthplace of Seattle"

SEATTLE: DISCOVER AND EXPLORE PAST LANDSCAPES

THE WATERLINES PROJECT

RIVER TOUR

Duwamish River

17 Miles
BIKE
CAR

Your Seattle's rivers. Although profoundly altered in recent years, the Duwamish River has been undergoing something of an ecological and cultural revival. The 17 mile river now flows through one of the most urbanized areas of Seattle. In August 1916, the Black River, historically the outlet for Lake Washington and the Cedar River watershed, dried up when the Hamilton Cut lowered the level of Lake Washington by 9 feet and diverted the flow through the locks. Around the same time, the Duwamish River was straightened from a 14 mile meandering river to a 5 mile straight waterway. Engineered changes to Seattle's shoreline altered the ecosystem and traditional food sources, such as fish and shellfish. The river's history is a story of human impact on the natural world and the Duwamish valley. This land became Seattle's industrial and commercial heartland and an engine of economic growth for the city.

1 Lake Washington
The present-day outlet of the Cedar River to Lake Washington is the Black River. Before 1916, the lake's shoreline was about a half mile to the south. The Black River dried up when the Hamilton Cut lowered the level of Lake Washington by 9 feet and diverted the flow through the locks. Around the same time, the Duwamish River was straightened from a 14 mile meandering river to a 5 mile straight waterway. Engineered changes to Seattle's shoreline altered the ecosystem and traditional food sources, such as fish and shellfish. The river's history is a story of human impact on the natural world and the Duwamish valley. This land became Seattle's industrial and commercial heartland and an engine of economic growth for the city.

2 Black River

Hamilton Ave SE and Sunset Blvd

Travel south from the lake, through what was once an industrial port, to the confluence of the Black and Cedar Rivers. Following the meandering Black River, the Hamilton Ave SE tunnel cut through the Black River valley. The tunnel cut through the Black River valley, and the river's history is a story of human impact on the natural world and the Duwamish valley. This land became Seattle's industrial and commercial heartland and an engine of economic growth for the city.

3 Lahrer

Green River Bridge

Pass over the Green River a few feet upstream of its confluence with what remains of the Black River. The place to the south are in view, in historical, a shallow lake. About 2000 years ago, the river valley was in a forest. The river's history is a story of human impact on the natural world and the Duwamish valley. This land became Seattle's industrial and commercial heartland and an engine of economic growth for the city.

4 North Wind's Weir

112th St SE of Pacific Hwy, 12th Ave

At North Wind's Weir, a rock outcropping is visible in the bed of the Duwamish River at low tide. This site has been important to the people of the Duwamish valley for centuries. The river's history is a story of human impact on the natural world and the Duwamish valley. This land became Seattle's industrial and commercial heartland and an engine of economic growth for the city.

5 Superfund

Dallas Ave S (between 12th Ave S)

Take a car and street that follows a former site of an industrial facility. Part of the former Boeing Plant 7 that once housed the city's aircraft industry. The river's history is a story of human impact on the natural world and the Duwamish valley. This land became Seattle's industrial and commercial heartland and an engine of economic growth for the city.

6 T-107 Park & Duwamish Longhouse

4705 W Marginal Way & Duwamish Trail

Follow the trail that is the only remaining natural bend in the river at T-107 Park. Located just east of the site of the former Black River, the park is a remnant of the land that was once the Duwamish River's natural bend. The river's history is a story of human impact on the natural world and the Duwamish valley. This land became Seattle's industrial and commercial heartland and an engine of economic growth for the city.

7 Tidelands

2130 Harbor Ave SW

End your tour at the "best view of Seattle" from just past Black Point. Located just east of the site of the former Black River, the park is a remnant of the land that was once the Duwamish River's natural bend. The river's history is a story of human impact on the natural world and the Duwamish valley. This land became Seattle's industrial and commercial heartland and an engine of economic growth for the city.

Alki - A Remote Residential Neighborhood & Popular Bathing Beach



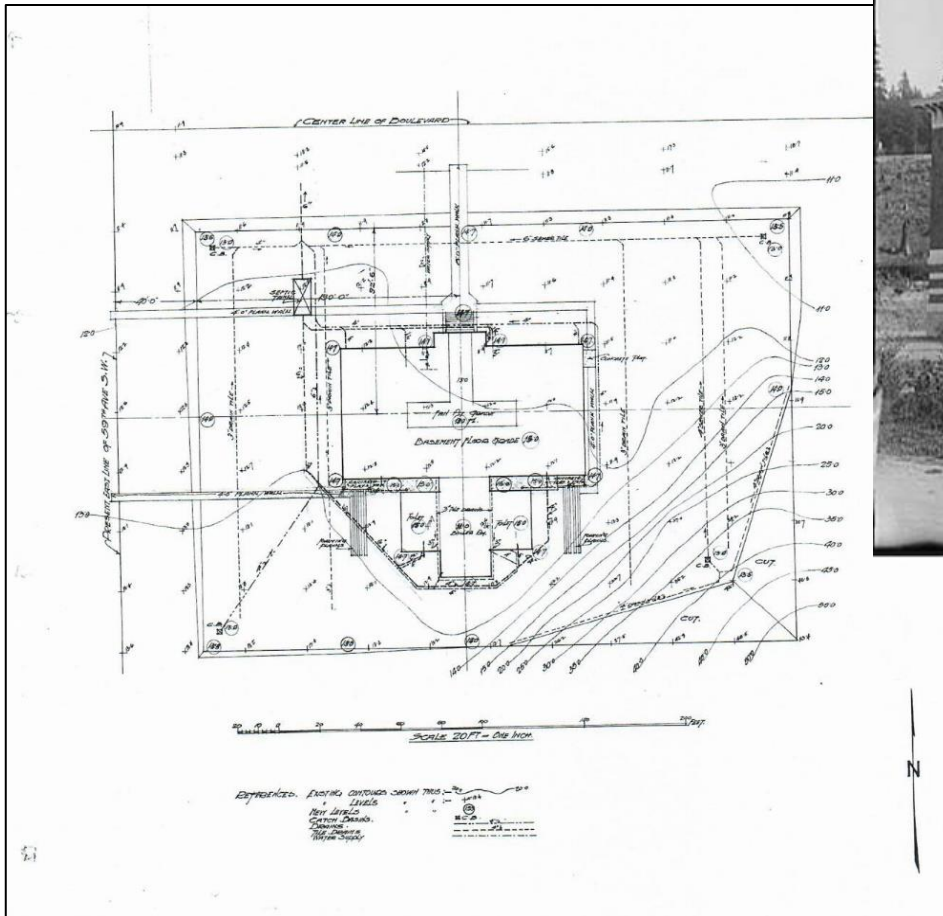
Nearby Schmitz Park, donated in 1908-1912



Neighborhood development, 1936

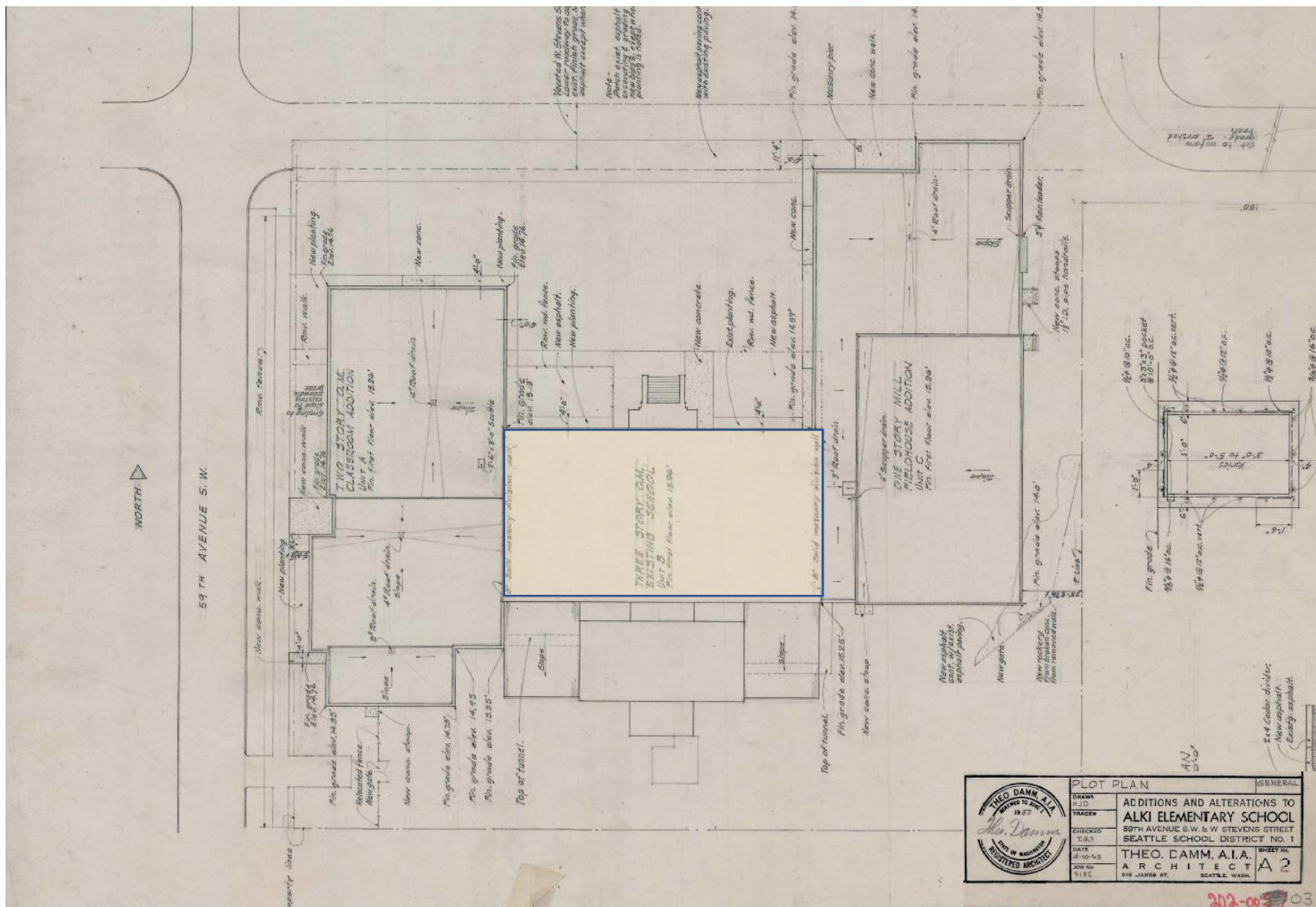


The first Alki Elementary School, 1913



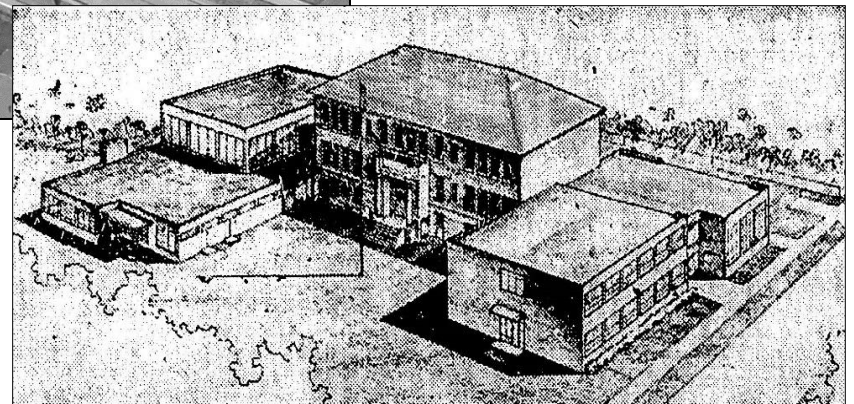
East & West Additions & Alterations

Design by Architect Theo Damm, April 1953





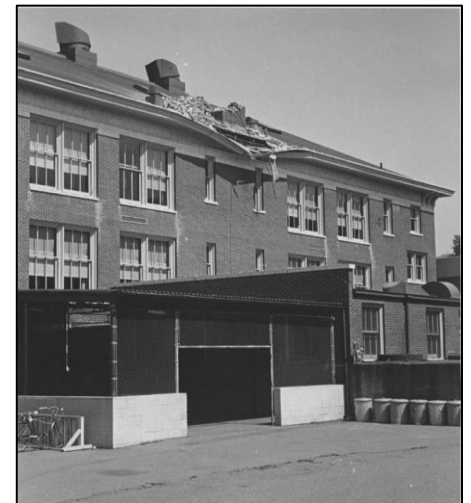
**East & West Additions
Constructed in 1953-1954**





The Building Assembly ca. 1960

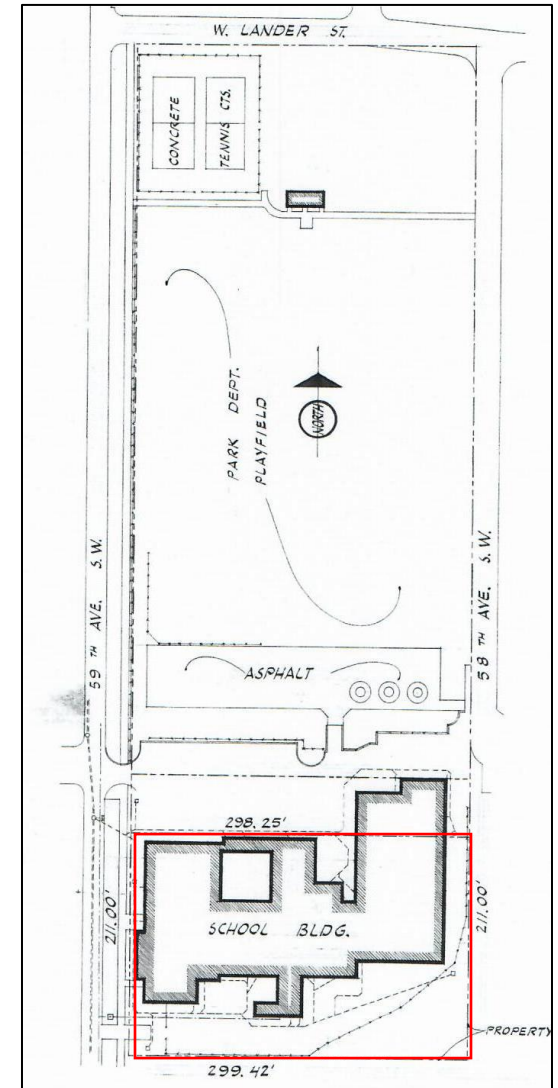
**Earthquake Damage & Demolition
of the 1913 School, 1965**



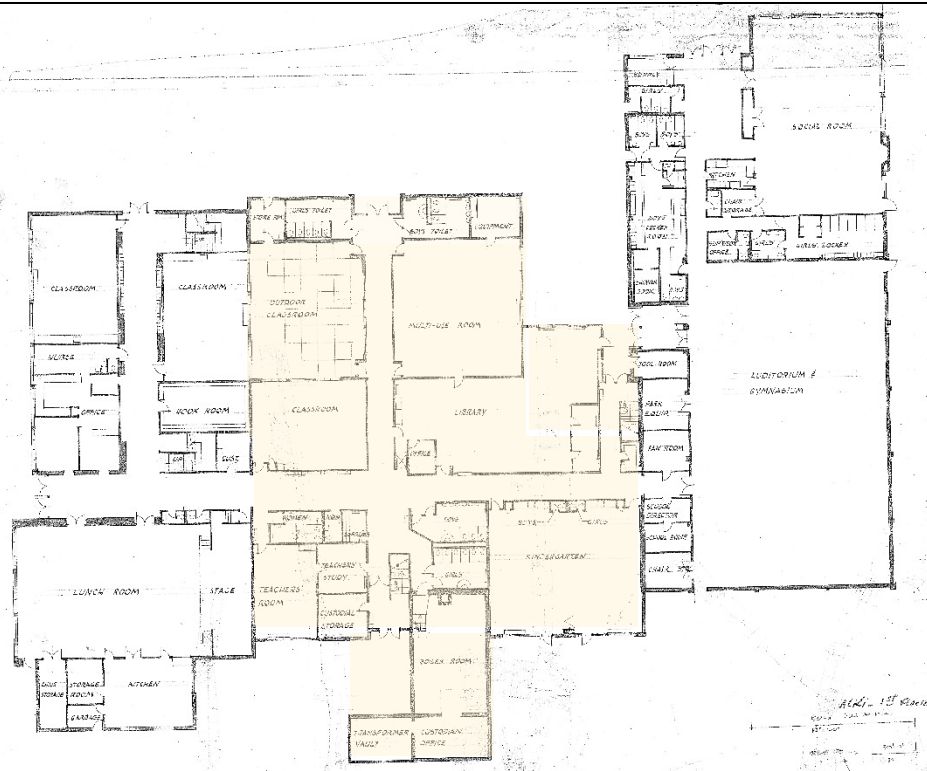


A New Central Addition,
Design by Architect Theo Damm,
July 1965, Constructed 1966-
1968, Dedicated April 1968

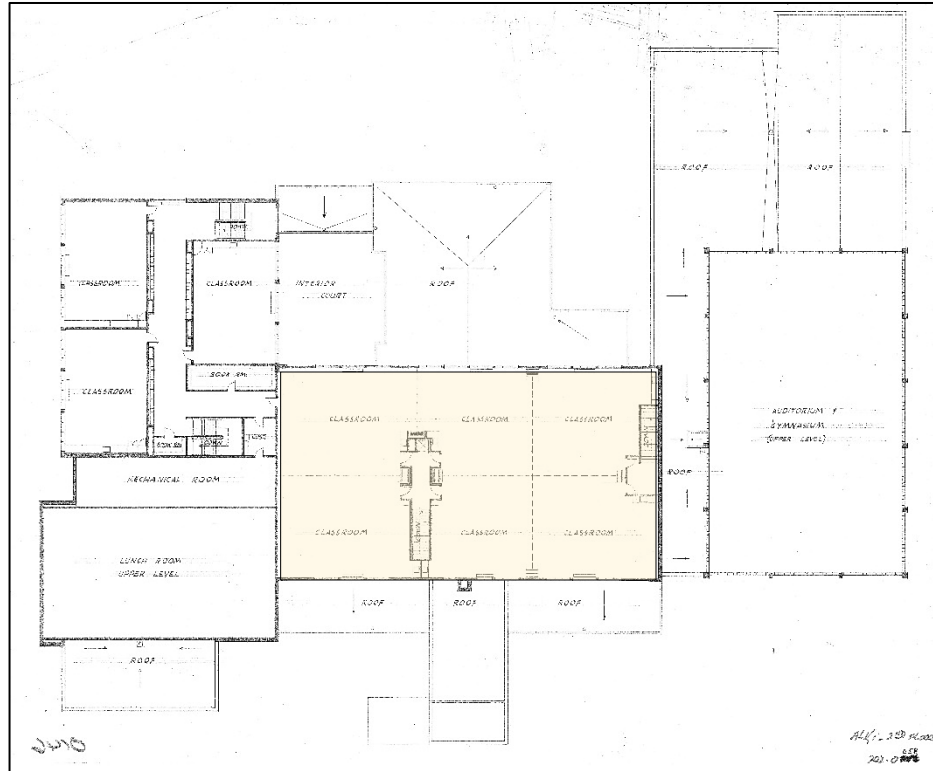
The Site Plan



The Central Addition, 1965



First Floor



Second Floor

The Current Setting & Alki Playfield









**The Current Building Exterior:
Primary West Facade & Main Entry**





Window & Door Types





North Side &
North Facades





Northeast Corner & Parks Community Center Facades





**Back of the Site
& South Facades**





Enclosed Open Space



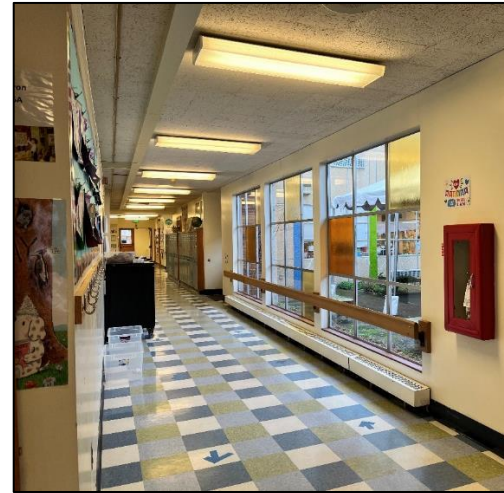


**Current Interior:
First Floor Primary
Corridors,
Adm. Office
& Lunchroom**





First Floor Classrooms,
Library &
Secondary Corridor





**Second Floor Classrooms,
Office & Lounge**





Gymnasium & Community Center





Other Projects
by Architect
Theo Damm

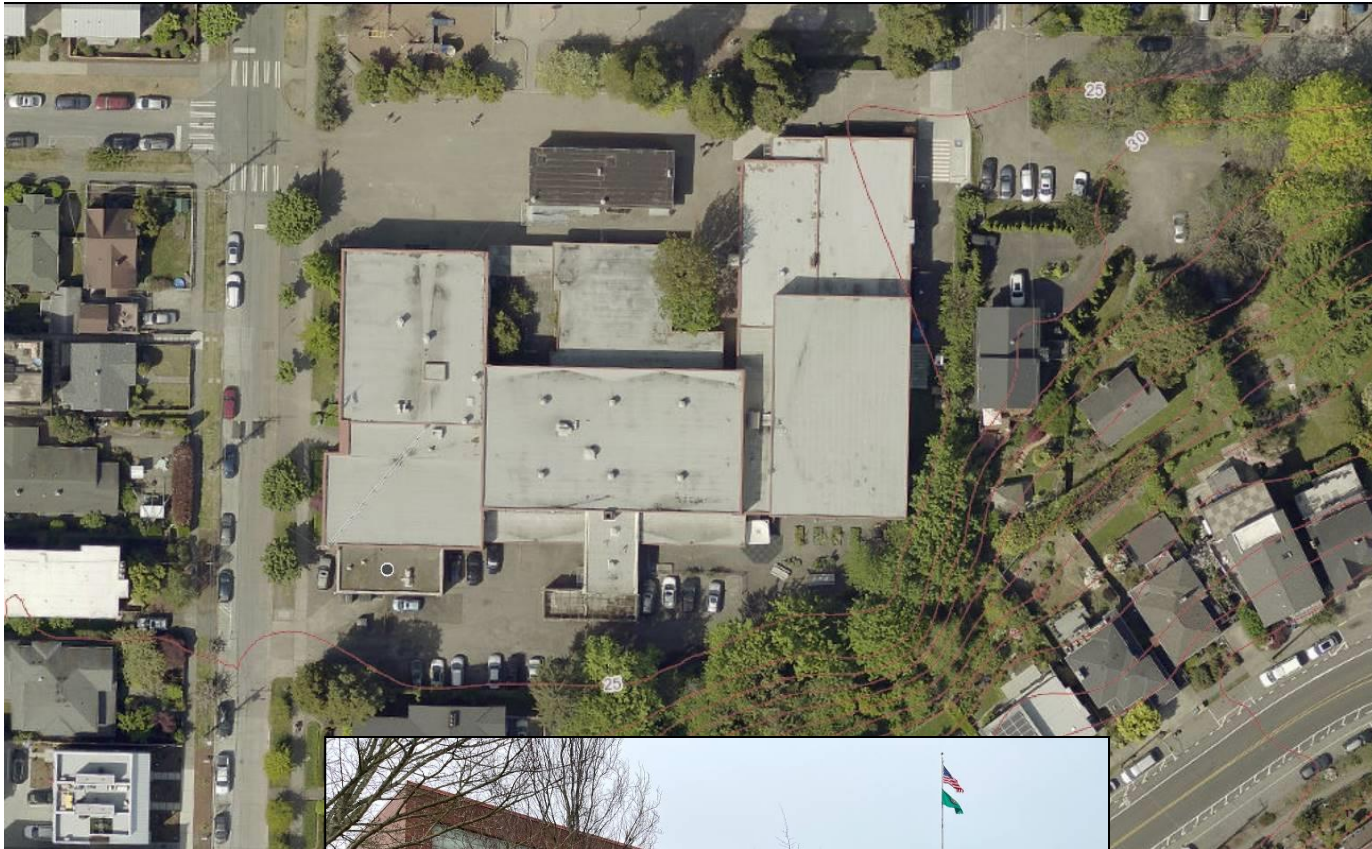




Modern Style Seattle Landmark Schools

- Cedar Park (1959)
- Nathan Eckstein (1950)
- Catherine Blaine (1952)
- Fairmont Park (1964)





**Alki Elementary School
Seattle Landmark Nomination
April 20, 2022**

BOLA Architecture + Planning
Seattle