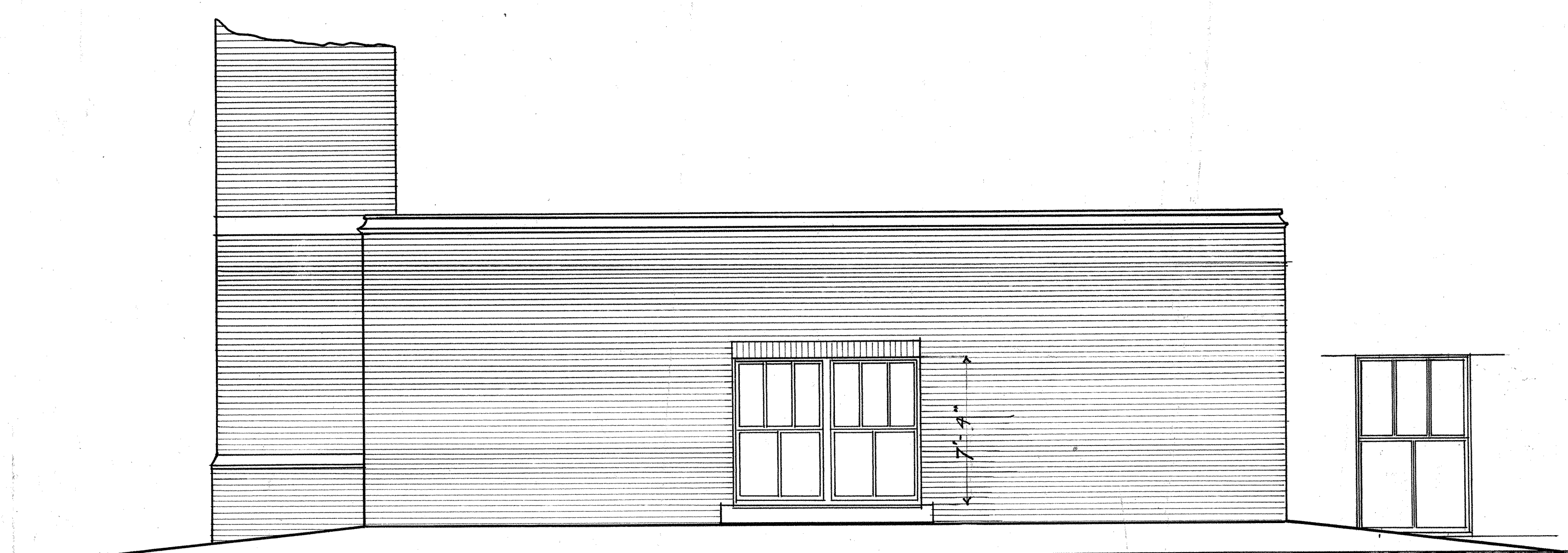
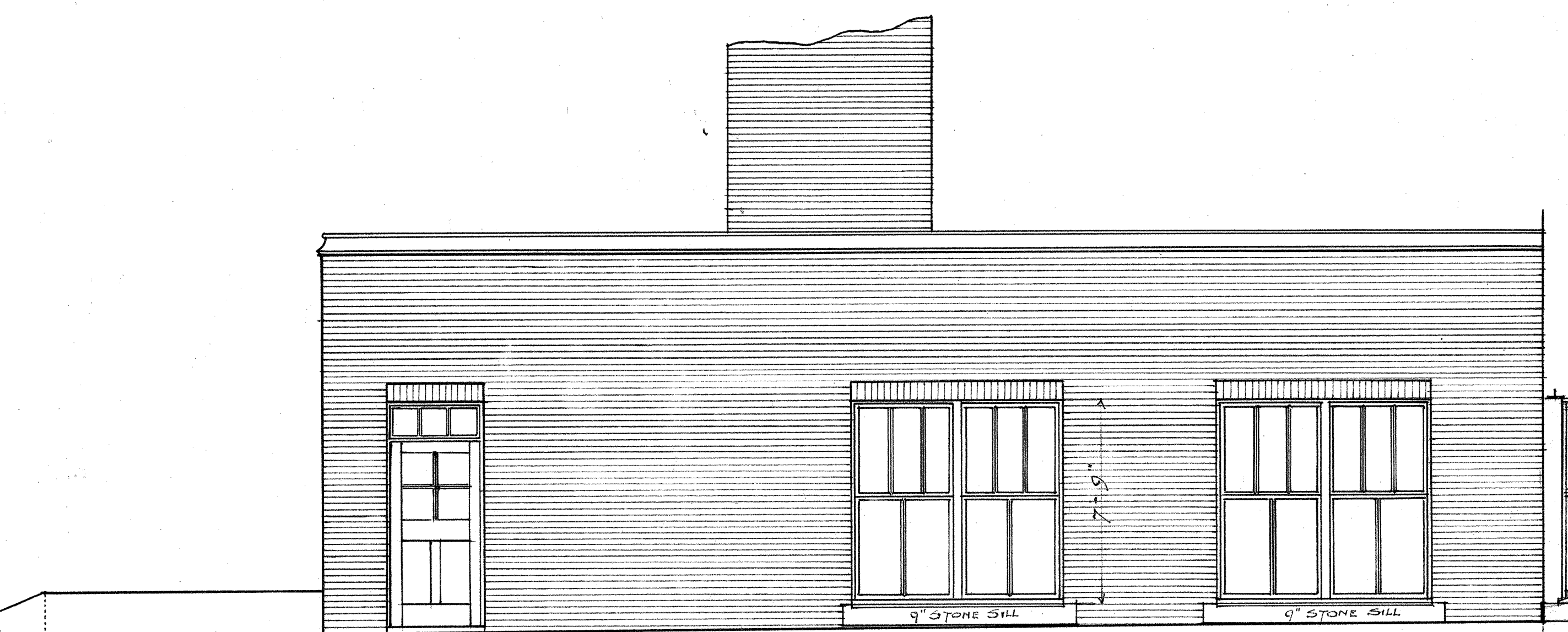


Lincoln H.S. 15

G-3

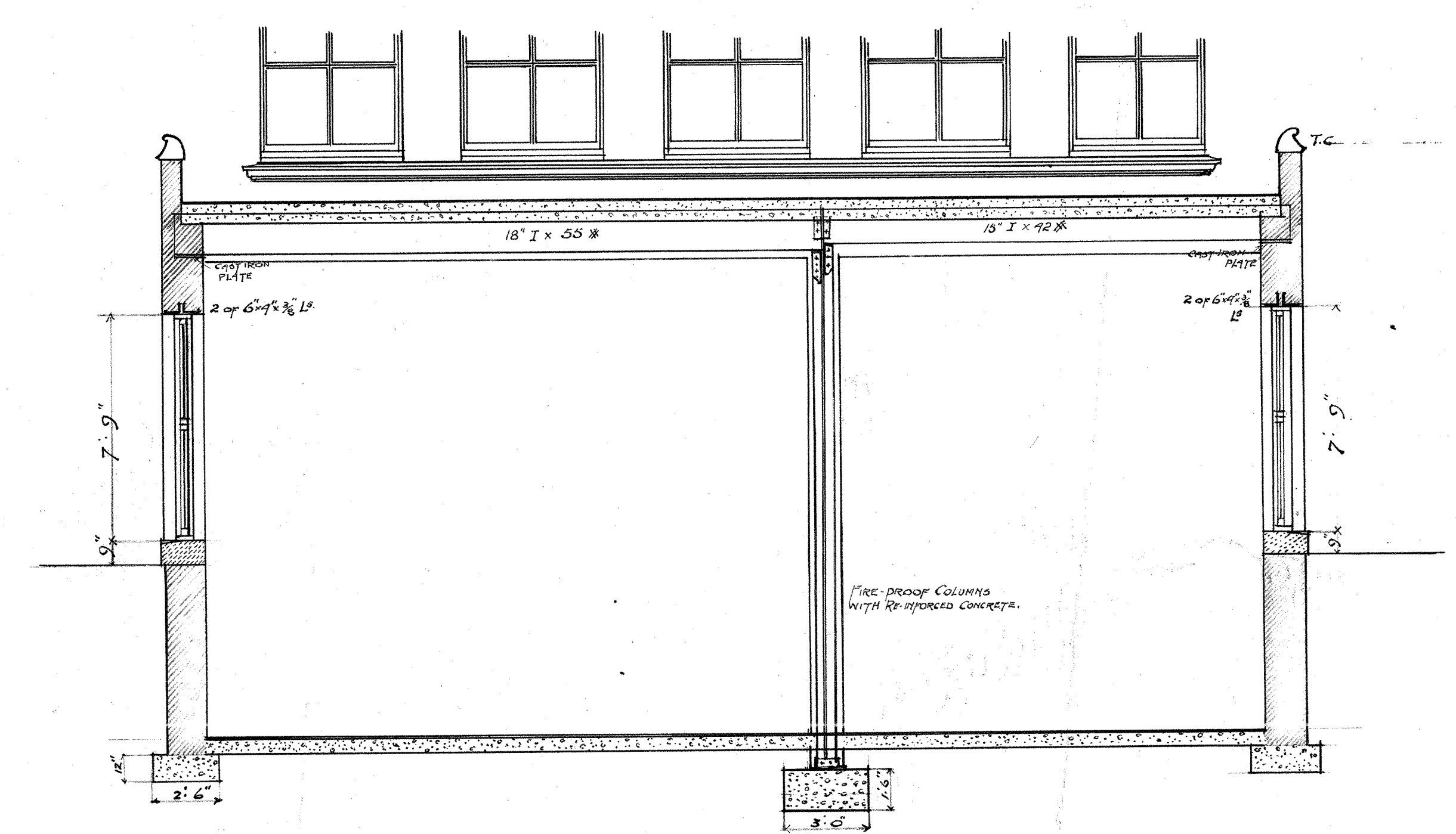


EAST ELEVATION

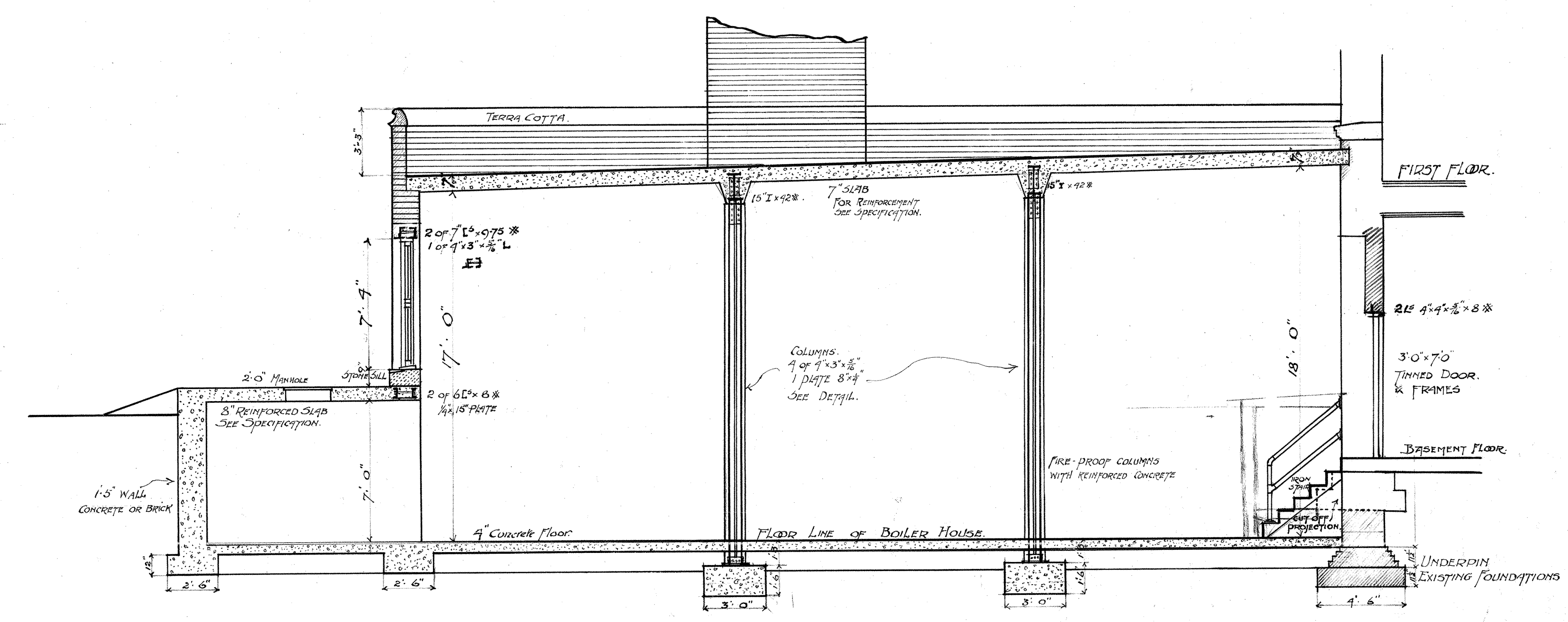


NORTH ELEVATION

4 ANGLES
1 1/2" x 1/2" x 1/2" x 1/2"
WINDOWS
TO PIN ROOM.
SOME REPAIRS
OLD WINDOWS.



SECTION C.D.



SECTION A.B.

LINCOLN HIGH SCHOOL SEATTLE SCHOOL DIST. N°1.		
DRAWN BY A.M.F.Q.	ELEVATIONS & SECTIONS	SCALE 1/4" INCH = 1'-0"
CHECKED BY EDGAR BLAIR ARCHT		DRAWING N° 1 SET N° 1

DRAWING NUMBER

DRAWING NUMBER

DRAWING NUMBER

DRAWING NUMBER

DRAWING NUMBER

DRAWING NUMBER

SAFOD PRODUCTS • NEW HOPE, MINNESOTA
REORDER BY PART NUMBER 6552

SAFOD PRODUCTS • NEW HOPE, MINNESOTA
REORDER BY PART NUMBER 6552

SAFOD PRODUCTS • NEW HOPE, MINNESOTA
REORDER BY PART NUMBER 6552

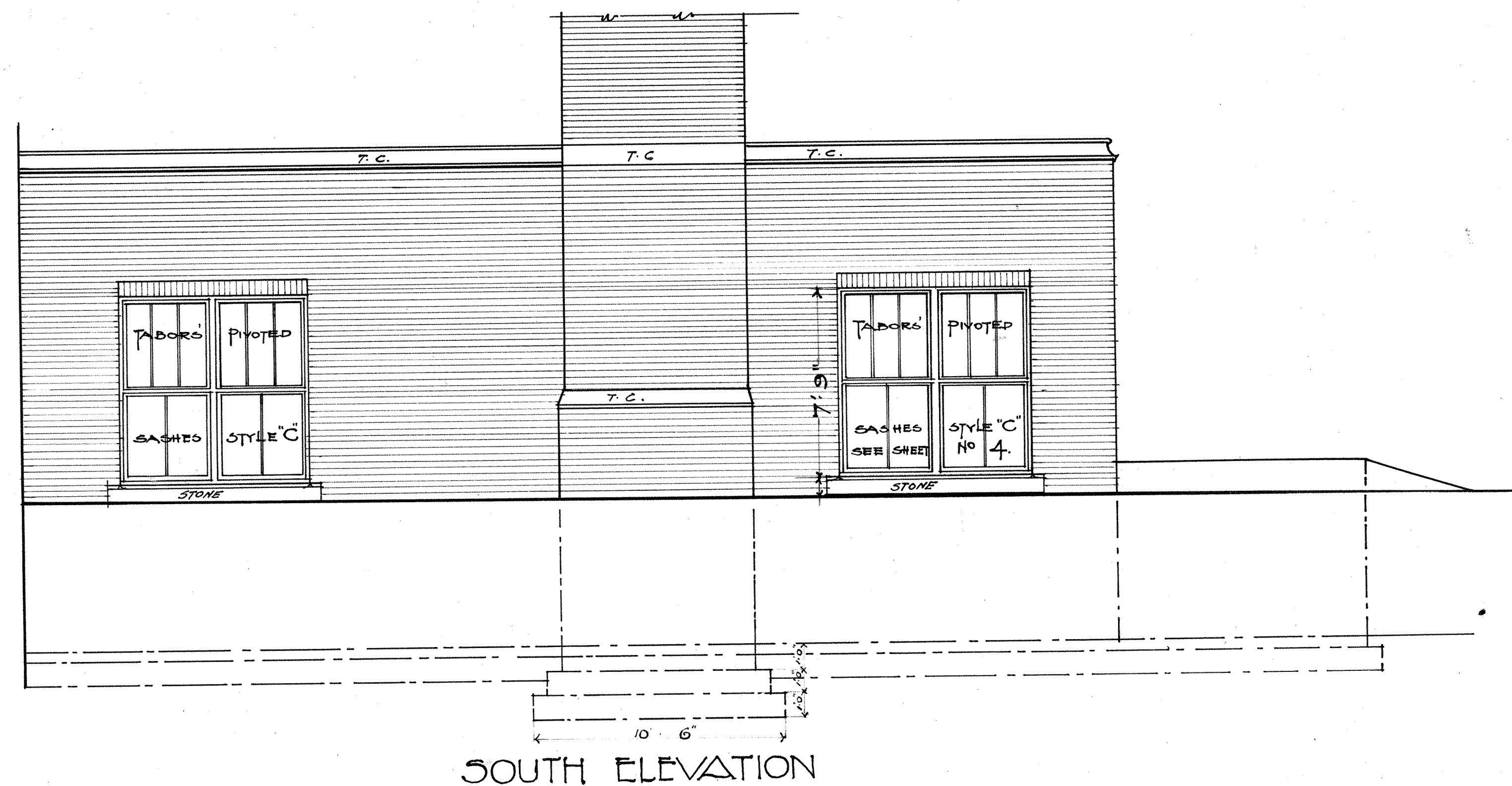
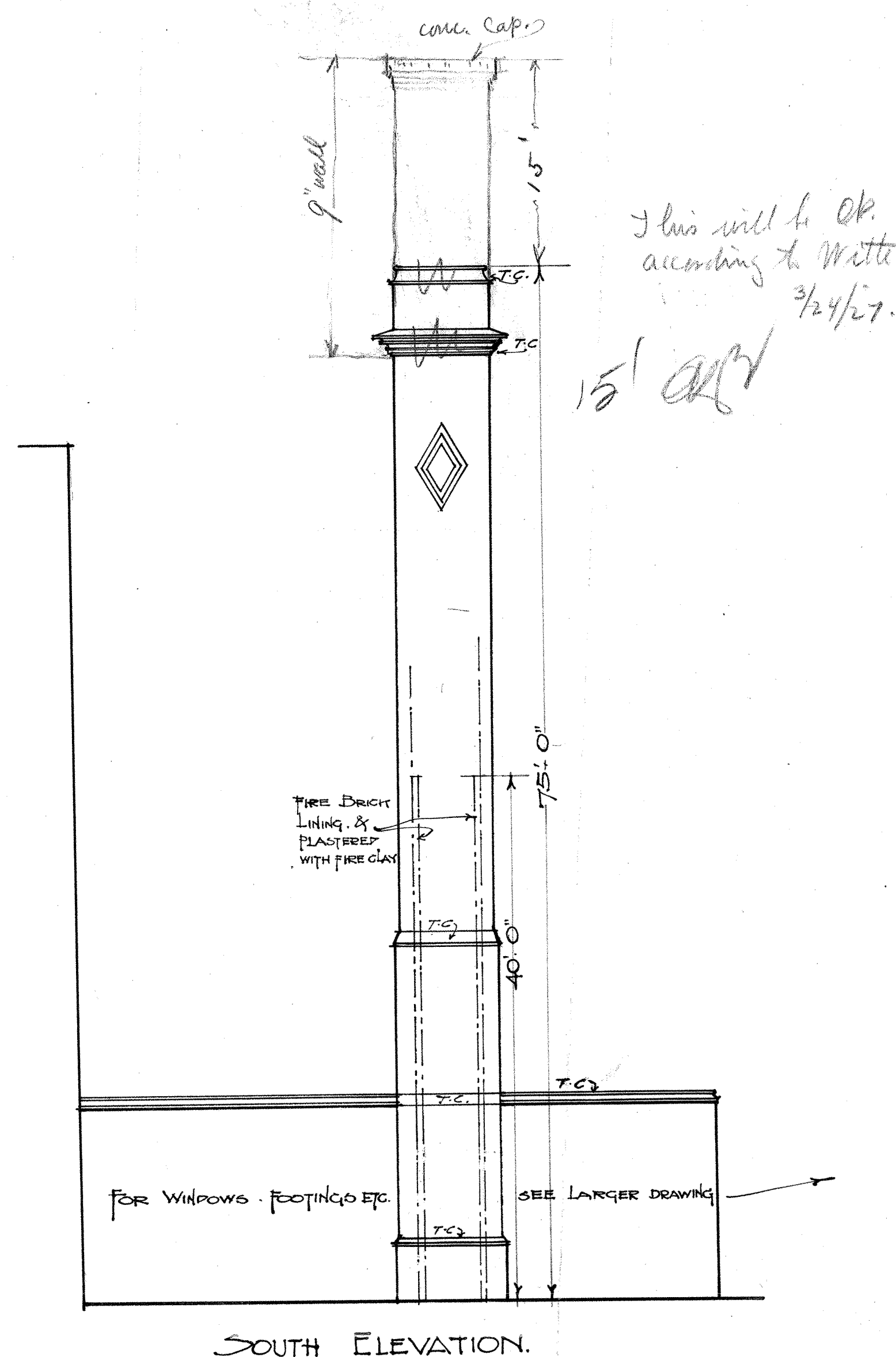
SAFOD PRODUCTS • NEW HOPE, MINNESOTA
REORDER BY PART NUMBER 6552

SAFOD PRODUCTS • NEW HOPE, MINNESOTA
REORDER BY PART NUMBER 6552

SAFOD PRODUCTS • NEW HOPE, MINNESOTA
REORDER BY PART NUMBER 6552

015-000029

Lincoln H.S. 2B



LINCOLN HIGH SCHOOL	
SEATTLE SCHOOL DIST. NO. 1.	
DRAWN BY AMEQ & P.S.	SCALE 1/8" & 1/4" = 1'-0"
CHECKED BY	DRAWING NO. 2
	SET NO. 2

015-E-0029

SAFCO PRODUCTS • NEW HOPE, MINNESOTA
REORDER BY PART NUMBER 6552

LINCOLN HIGH SCHOOL	
SEATTLE SCHOOL DIST NO. 1.	
DRAWN BY A. H. G.	1 st FLOOR PLAN
CHECKED BY	EDGAR BLAIR ARCHT
	SCALE 1/4" = 1'-0"
	DRAWING NO. 1 SET NO. 1

015-E-C.030