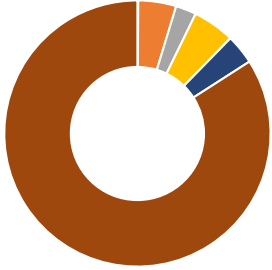


PEOPLE

RACE/ETHNICITY:



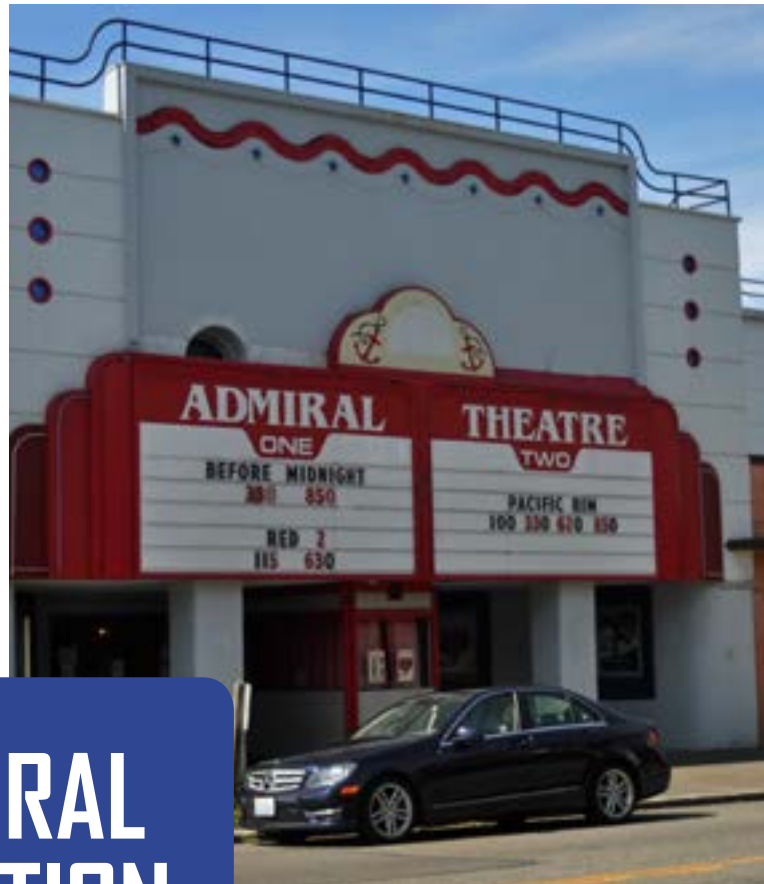
American Indian + Alaska Native	0.1%
Asian	4.6%
Black or African American	2.5%
Hispanic or Latino, any race	5.1%
Native Hawaiian + Pacific Islander	0.0%
Some other race	0.0%
Two or more races	3.6%
White	84%

LANGUAGES: For translation & interpretation

18

Total Languages Spoken

DON can help identify recommended languages.



WHAT WE'RE HEARING

Housing/Homelessness

- Homelessness
- Car & RV camping

Transportation

- Future light rail station planning
- Admiral way improvements & bike lanes
- Need for safety improvements
- Speeding, drag racing
- Terminal 5 & Port of Seattle
- Bus reliability

Public Safety

- Public safety at Alki Beach
- Car prowls

ADMIRAL JUNCTION

UPDATED 5/2018

NEIGHBORHOOD NUMBERS

	Admiral Junction	Citywide
Renter households	% 46.4	53
People under 18 years of age	% 16.3	15
People age 65 and over	% 15.5	11
Persons of color	% 16	33
Language other than English spoken at home	% 14.4	22
High school or higher	% 97.9	93
Bachelor's degree or higher	% 59.6	57
Median household income	\$ 80,275	65,277
Unemployed	% 6.2	7
Population below poverty level	6.6	14

Source: 2009-2013 American Community Survey

LEARN MORE

Local Blogs + News

- alkinews.wordpress.com
- westseattleblog.com
- westsideseattle.com/west-seattle-herald
- Ethnic Media: seattle.gov/iandraftaffairs/EMP

Didn't capture it?

Contact the Department of Neighborhoods at NeighborhoodSnapshot@seattle.gov or call 206.615.0856

More Resources

For a document with live web links, visit <http://www.seattle.gov/neighborhoods/neighborhoods-and-districts>



Seattle
Neighborhoods

SPACES TO GATHER

- [Alki Beach Bathhouse](#)
- [Alki Community Center](#)
- [Alki Elementary](#)
- [Lafayette Elementary](#)
- [Madison Middle School](#)
- [The Historic Admiral Theater](#)
- [West Seattle Branch Library](#)
- [West Seattle High School](#)

NEIGHBORHOOD/COMMUNITY GROUPS

Neighborhood / Community Based Organizations

- [Admiral Neighborhood Association](#)
- [Alki Community Council](#)
- [Island View Resident Council](#)
- [Senior Center of West Seattle](#)
- [Southwest District Council](#)
- [Southwest Seattle Historical Society](#)
- [Welcoming West Seattle](#)
- [Westside Neighbors Network](#)

Business

- [West Seattle Chamber of Commerce](#)
- [West Seattle Farmers Market](#)

Transportation / Environment

- [Alki Elementary Traffic Safety Task Force](#)
- [Seattle Green Space Coalition](#)
- [Sustainable West Seattle](#)
- [West Seattle Bike Connections](#)
- [West Seattle Transportation Coalition](#)

Public Safety

- [Southwest Precinct Advisory Council](#)
- [West Seattle Block Watch Captains Network](#)
- [West Seattle Crime Prevention Council](#)
- [Emergency Hubs & Block Watches](#)

PLANS / REPORTS / RESOURCES

Neighborhood Past Plans / Reports / Resources

- [Admiral Neighborhood Design Guidelines](#)
- [West Seattle and Ballard Link Extensions](#)

Citywide Past Plans / Reports / Resources

- [Growth and Livability](#)
- [Legacy Business Study](#)
- [Commercial Affordability](#)
- [The Creation, Activation & Preservation of Cultural Space Report](#)
- [2017 Parks and Open Space Plan](#)
- [Parks Community Center Strategic Plan](#)
- [Pedestrian Master Plan](#)
- [Freight Master Plan](#)
- [Bike Master Plan](#)
- [Transit Master Plan](#)
- [Housing Affordability & Livability Agenda](#)
- [Seattle's Comprehensive Plan](#)
- [Outside Citywide](#)
- [Encouraging Backyard Cottages](#)

Current Outreach Efforts

PLANNING PROJECTS ASKING FOR INPUT

Housing/Homelessness/Land Use

- [Housing Affordability & Livability Agenda](#)
- [Accessory Dwelling Units EIS](#)

Transportation/Roads

- [West Seattle and Ballard Link Extensions](#)

PROJECTS UNDER CONSTRUCTION

Transportation/Roads

- [Admiral Way Safety Project](#)

GET IN TOUCH

Department of Neighborhoods

Office: 206.615.0856

NeighborhoodSnapshot@seattle.gov

www.seattle.gov/neighborhoods

Mayor's Office

206.684.4000

www.seattle.gov/mayor

Customer Service Bureau

www.seattle.gov/customer-service-bureau/



206.684.CITY (2489)

Council Member Lisa Herbold, District 1

lisa.herbold@seattle.gov // 206.684.8803

www.seattle.gov/council/herbold



Seattle
Neighborhoods