

Thank you for helping the City of Seattle address supply needs for COVID-19.

***The following packet provides the
following information:***

- 1. Manufacturing Specs***
- 2. Patterns and Photos of Final Product***
- 3. Box Labeling Requirements***

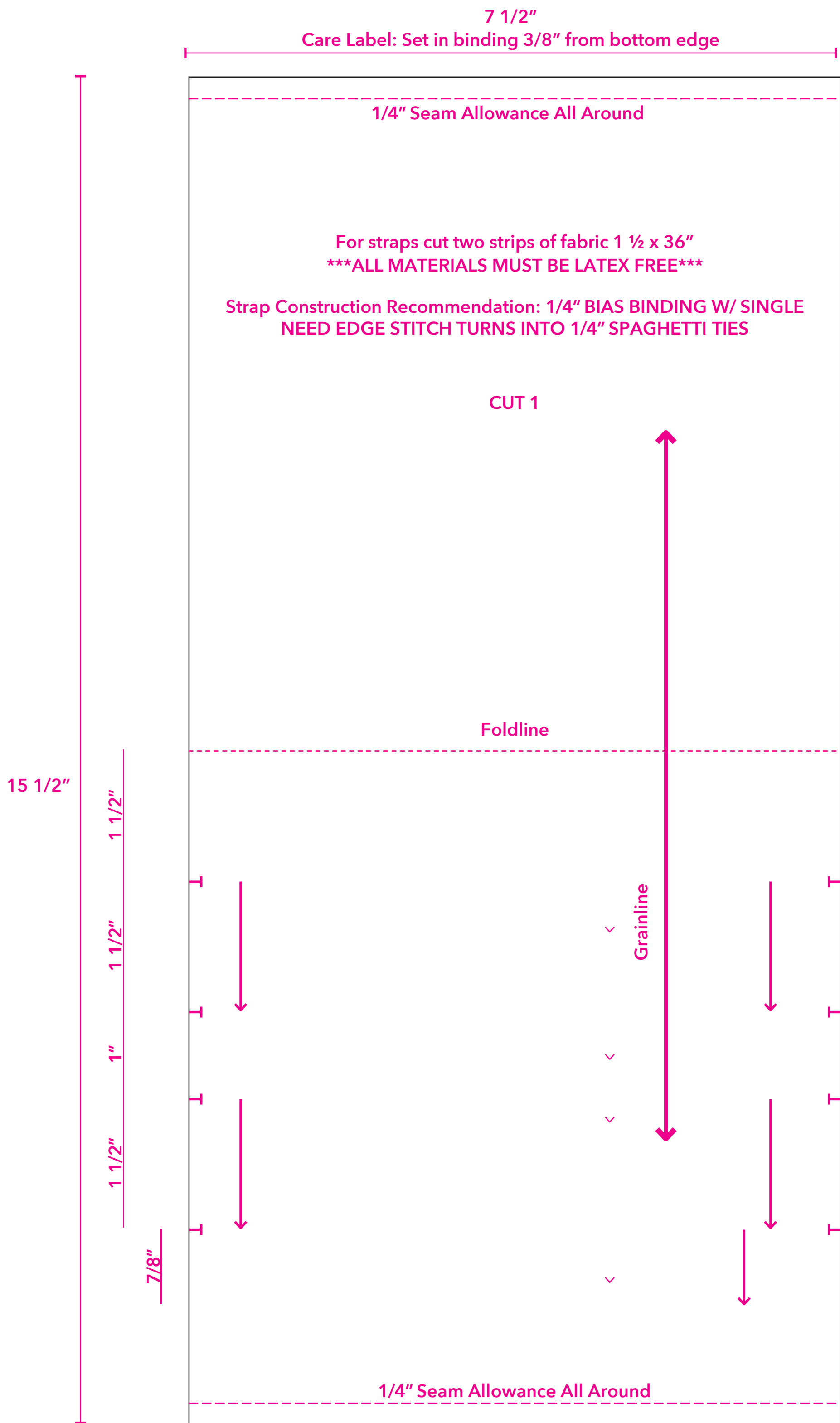
Fabric Face Coverings

Material Specification

Fabric, Thread

The City of Seattle recognizes that fabric supplies are becoming increasingly tight, and we may need to accept alternatives. Manufacturers should identify what they can source and communicate their options to the City for approval. The general specification for Face Coverings materials includes:

FABRIC TYPE	FABRIC COLOR	COATINGS/ TREATMENTS
<ul style="list-style-type: none">+ At least, woven 6 to 8 oz (in densities similar to dress shirt or bed sheet fabrics)+ Jersey knit 6 to 8 oz+ All face coverings will use at least 2 layers of fabric per the pattern and instructions+ Fabric should be stable for machine wash warm, tumble dry low+ Recommend finished coverings undergo a wash test	<ul style="list-style-type: none">+ Neutral, solid colors <i>preferred</i> CONTENTS <ul style="list-style-type: none">+ 100% cotton or cotton blend+ Polyester THREAD <ul style="list-style-type: none">+ Polyester per factory standards TIES <ul style="list-style-type: none">+ Can be ties around the head or elastic for around the ears on both designs	<ul style="list-style-type: none">+ No coatings or treatments required at this time including antimicrobial coatings 2 APPROVED DESIGNS <ul style="list-style-type: none">+ Kaiser Permanente+ Olsen Design* Modifications to the designs above can be made by approval.



Finished Kaiser Permanente Face Coverings with ties behind the head



Alternative Kaiser Permanente Face Coverings with elastic around the ears





Olson Mask

Made by: Clayton Skousen & Rose Hedges

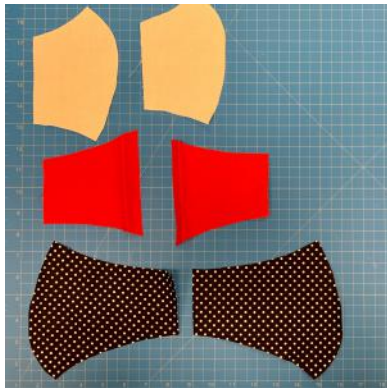
Materials Needed



- Cotton Weave Fabric (~1/2 yard is enough to make 2-3 masks)
- All-Purpose Thread
- Hair Ties (2)
- 0.3 micron Filter
- Scissors
- Double-Sided Skin Adhesive

Instructions

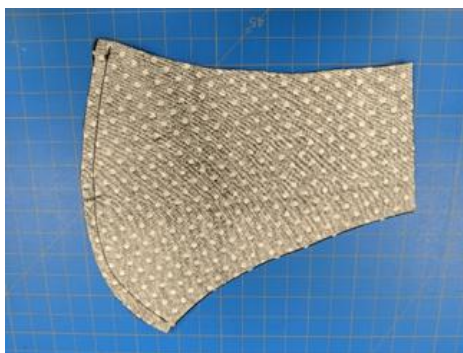
1 Using the patterns, cut one of each shape. You will need six (6) total pieces.



3 Sew *mouth 1* and *mouth 2* together along *side 3*.



2 Sew *face 1* and *face 2* together along *side 3*.



4 On *mouth 1* and *mouth 2* sew fold *side 5* over 1/4 inch and sew down..



Instructions - continued

- 5 On *cheek 1* and *cheek 2* fold *side 6* over 1/4 inch and sew down.



- 6 Match *cheek 1* and *mouth 1* at the dotted line (7). Sew a 1-inch tack at *side 1* and *side 2* where the two piece overlap.



- 7 Repeat Step 6 for *cheek 2* and *mouth 2*.
- 8 With the fronts of the fabric facing each other, sew along the entire perimeter of the mask.



- 9 Use one of the slits between the mouth and the cheek to turn the mask right-side out.



Instructions - continued

- 10 Add a hair tie to each side by folding the fabric on the end of the mask over the tie and sew down.



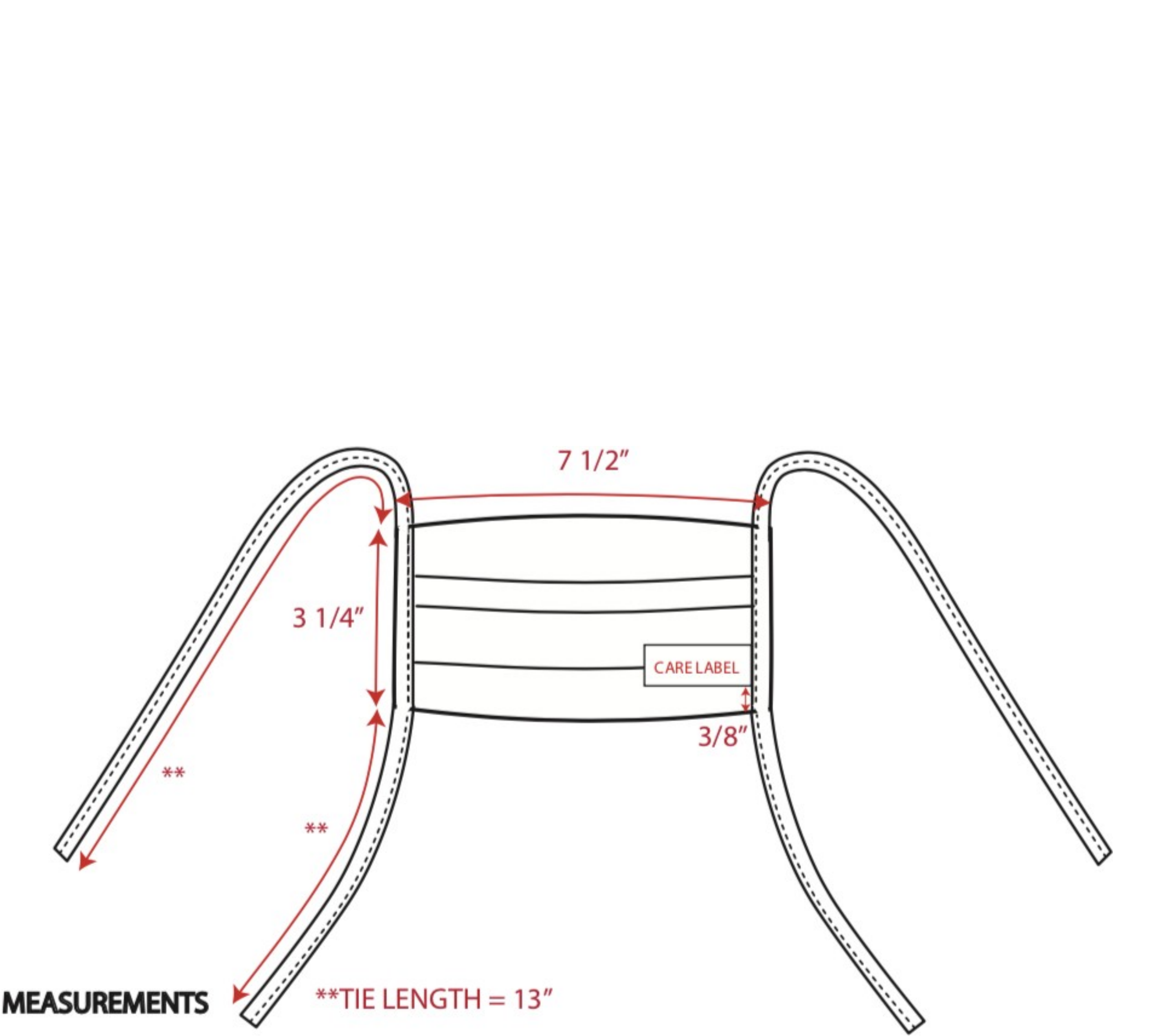
- 11 Apply double-sided skin tape around the contour of the mask to create the required seal.



Additional Instructions

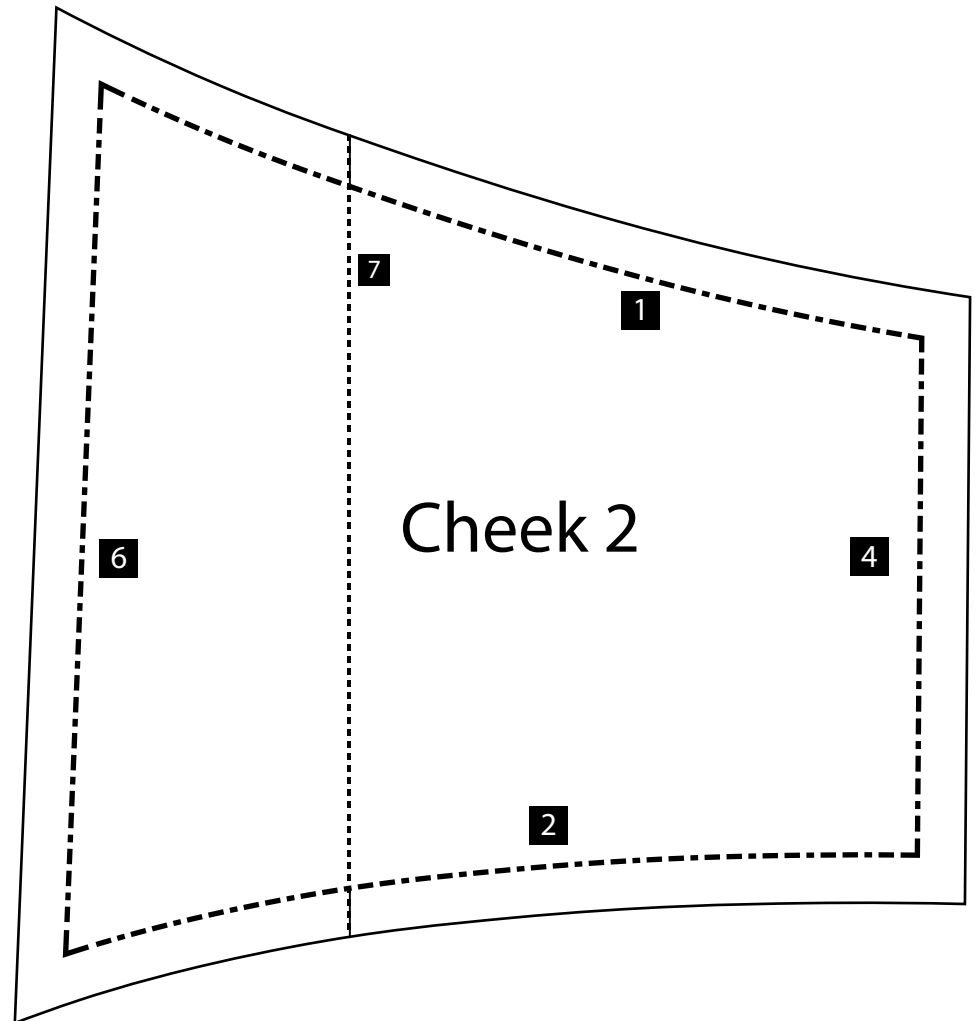
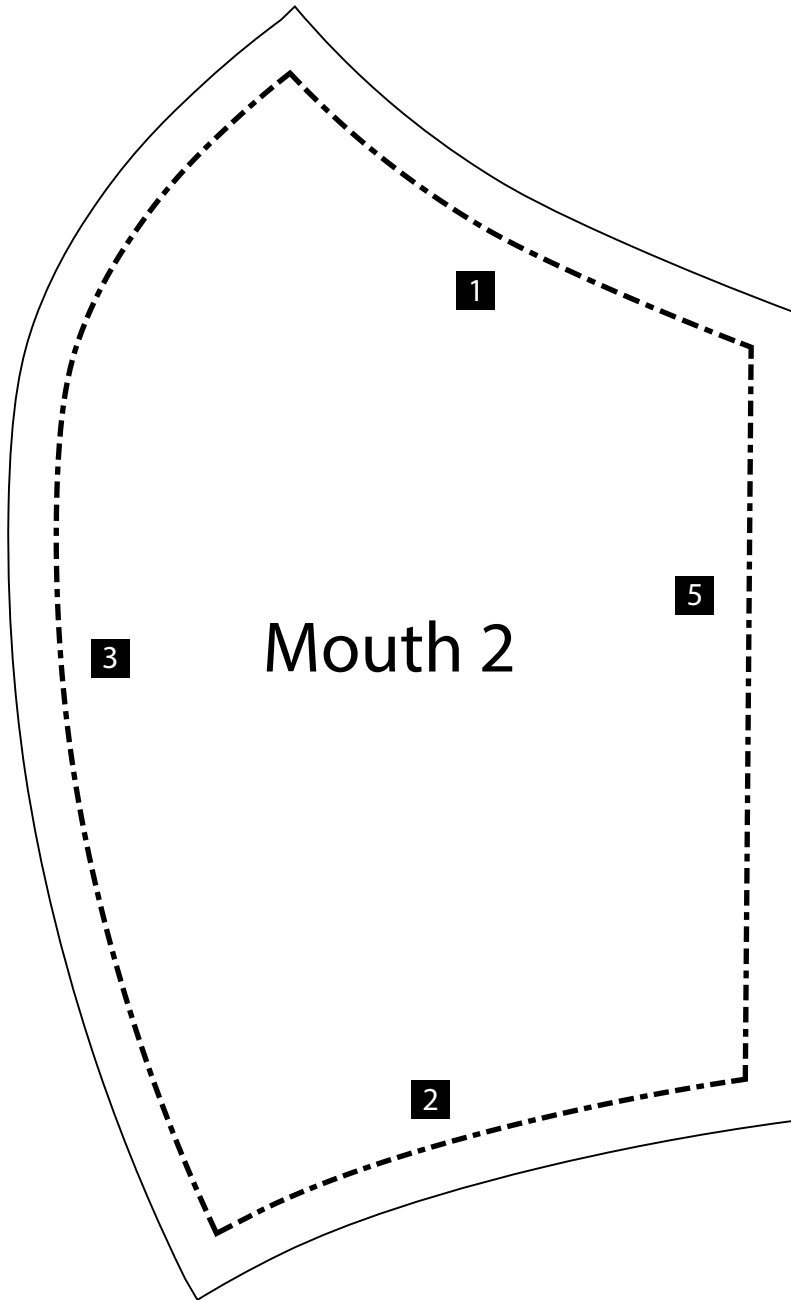
*Elastic will be applied at the hospital, to allow for different sizes to be made.

** for those making for yourself or other hospitals we are using 0.3 micron filters and inserting them in the pocket. We are also using wax coated string at the top for the mask to create bridge, allowing a better seal**

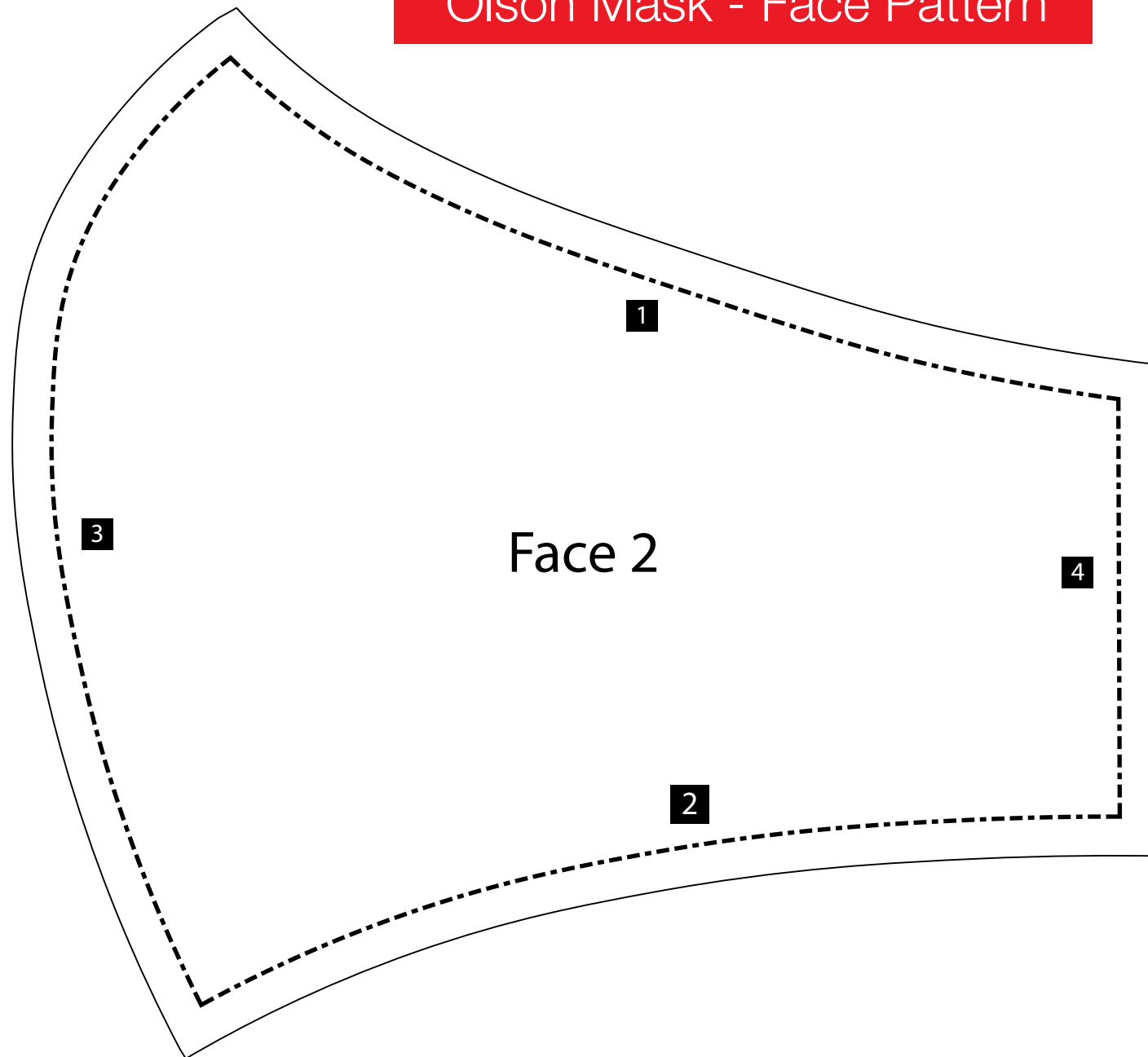


MEASUREMENTS

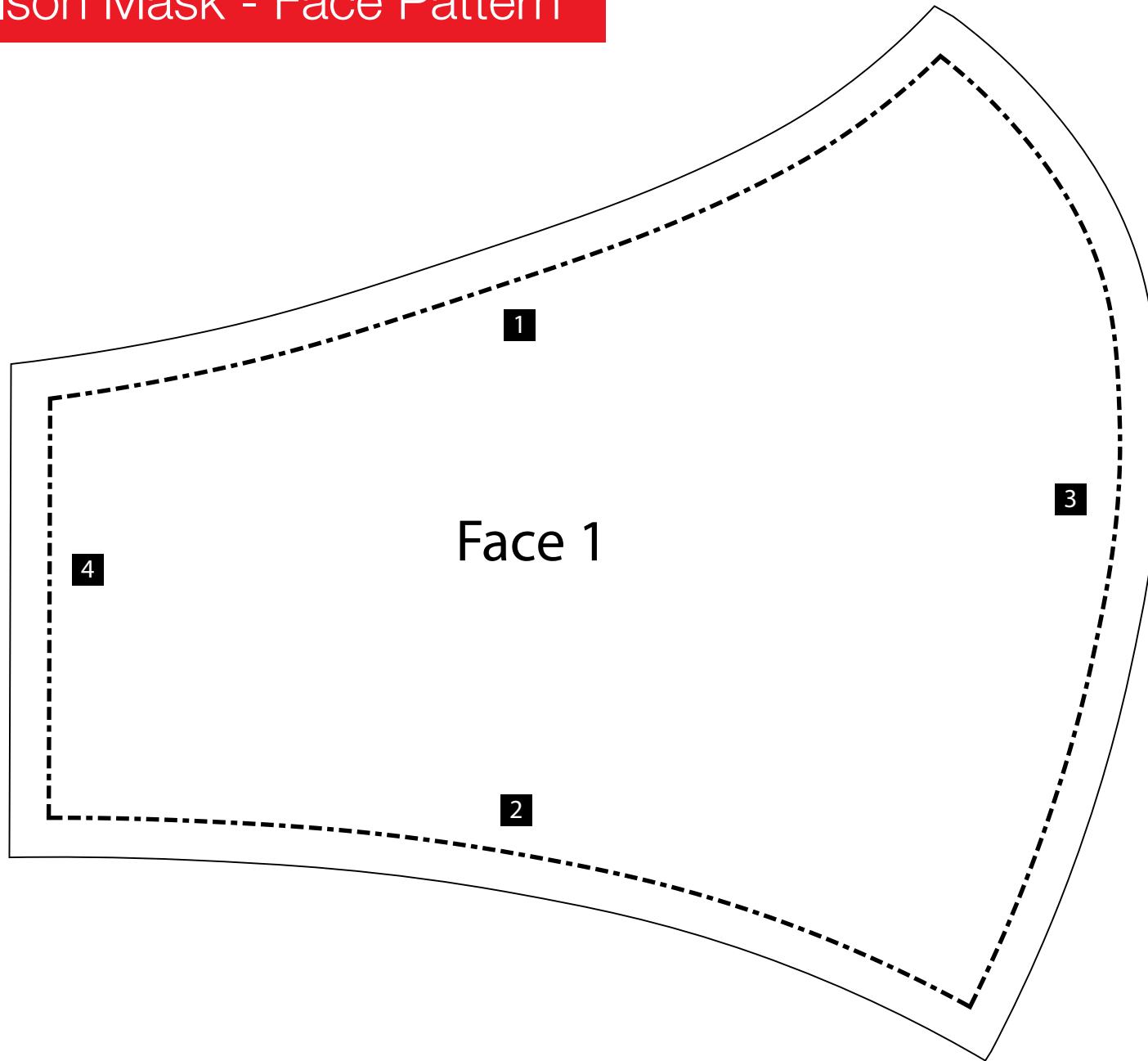
Olson Mask - Mouth & Cheek Pattern



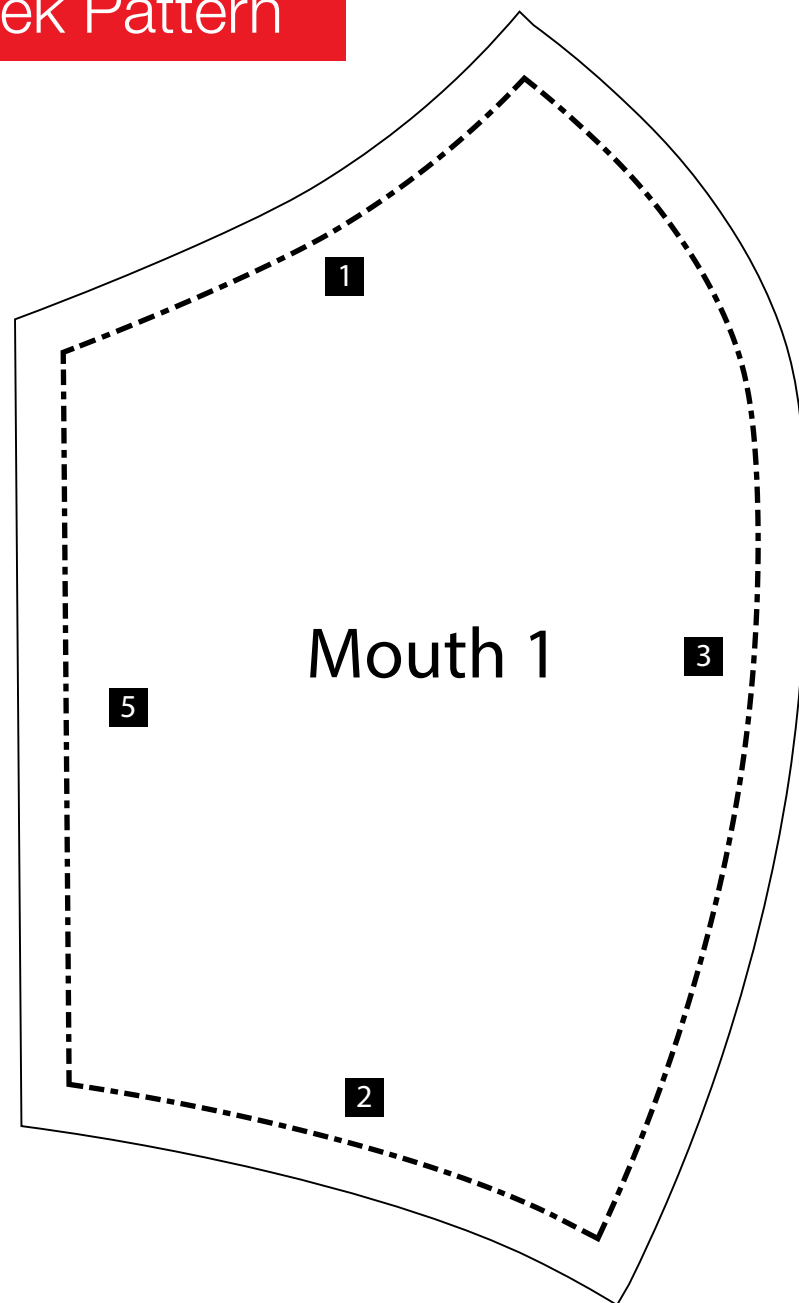
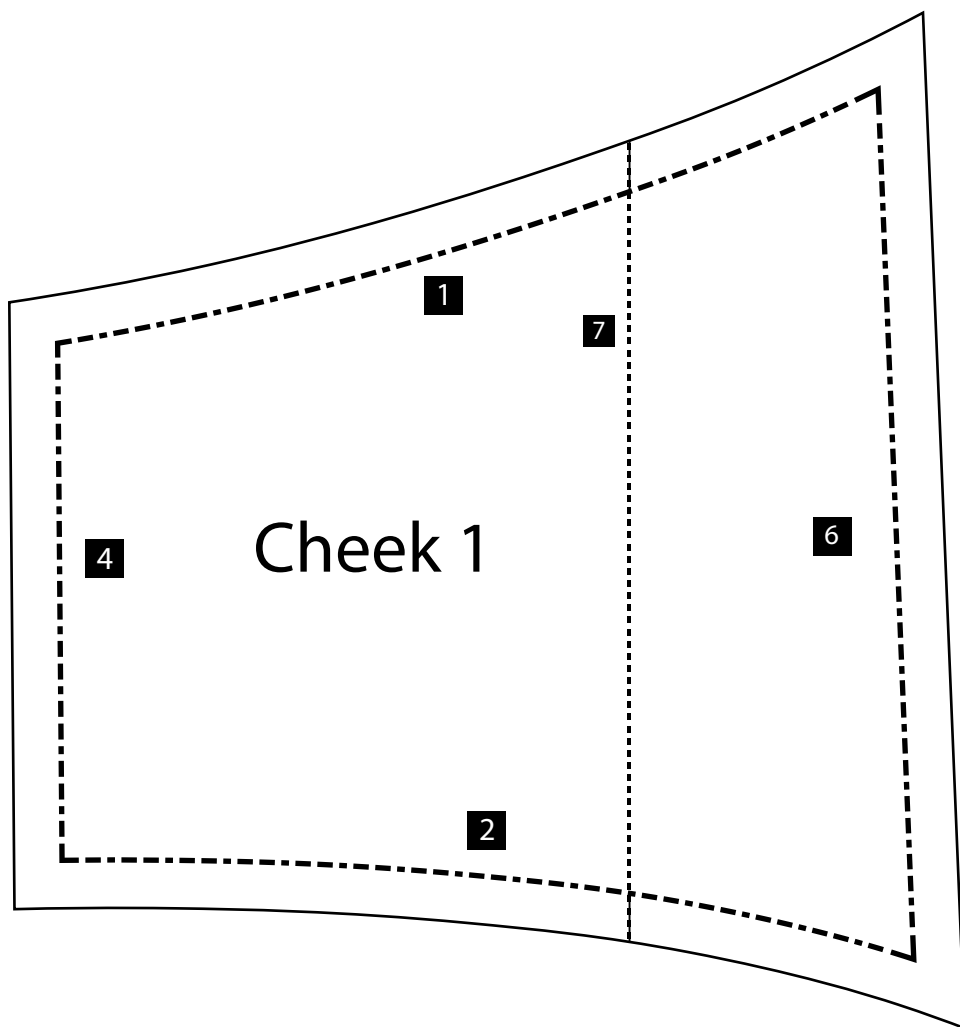
Olson Mask - Face Pattern



Olson Mask - Face Pattern



Olson Mask - Mouth & Cheek Pattern



Packaging / Packing

- + Please confirm packaging and case pack instructions directly with the buyer.
- + Sticker (ASE255) to be applied to outside of each package or to the carton with the following text:
- + For example, if you have boxes inside a larger box, each box must have the label. If you only have one big shipping box with the masks inside, the sticker must be somewhere on the outside or inside the packing.

For Reusable Face Coverings

FACE COVERINGS

NOT INTENDED FOR CLINICAL USE MUST BE
LAUNDERED BEFORE USE

Box Labeling Requirements

The following text must be visible on each box exterior. Select label option based on Coverings type.

For Reusable Face Coverings

FACE COVERINGS

NOT INTENDED FOR CLINICAL USE

MUST BE LAUNDERED BEFORE USE