



City of Seattle

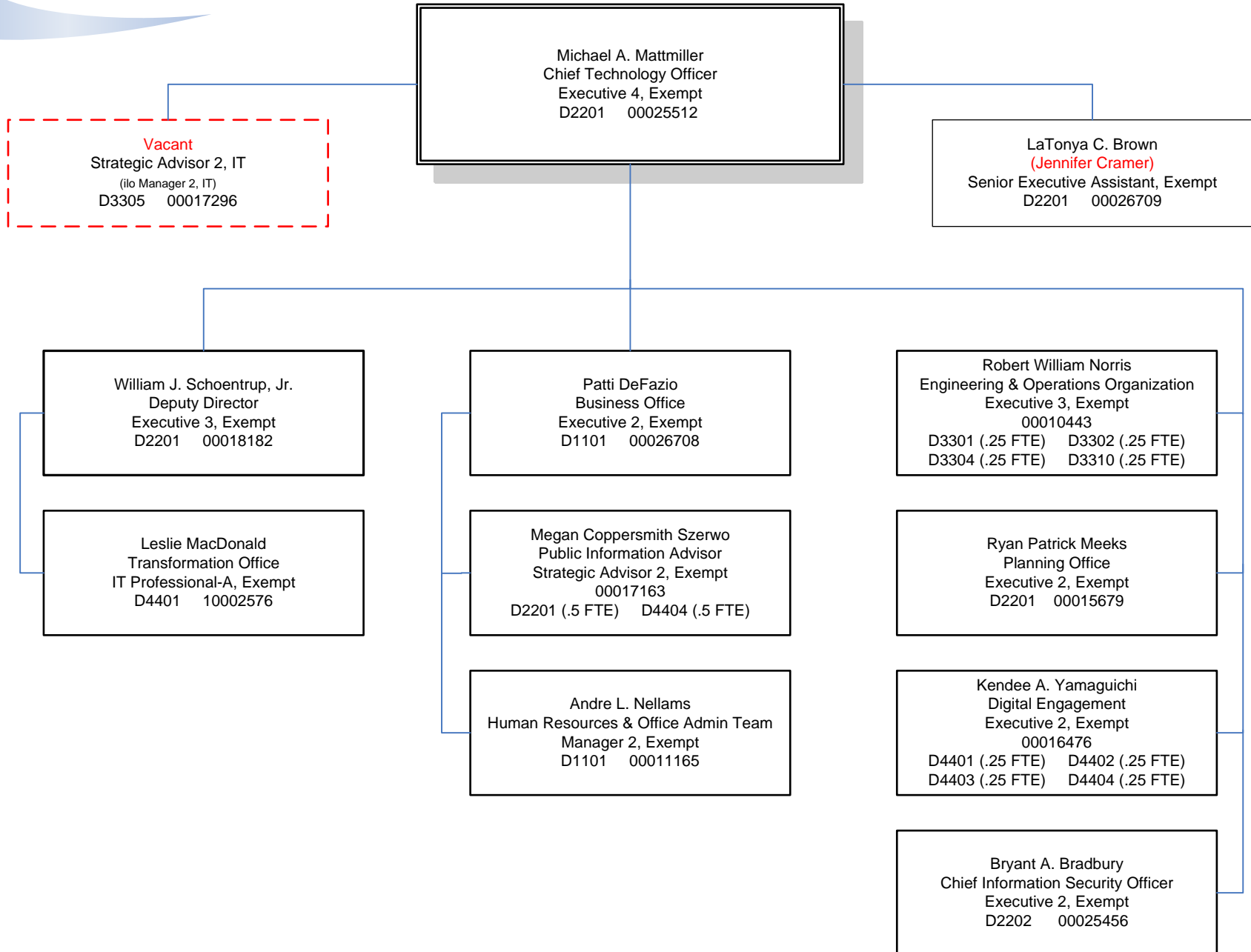
Department of Information Technology

2015

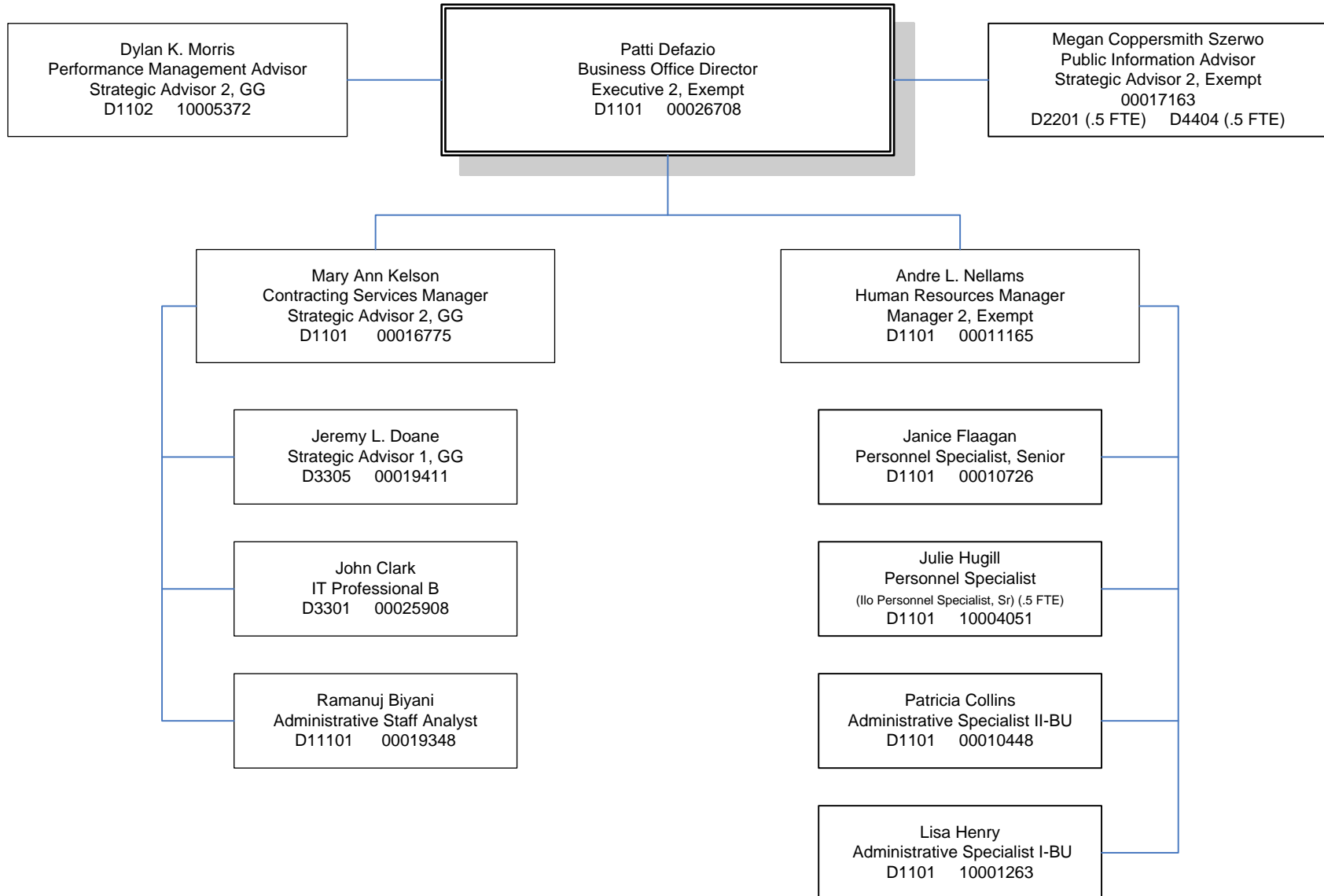
ORGANIZATIONAL CHARTS

Michael A. Mattmiller
Chief Technology Officer

Executive Leadership Team



**Business Office
(Communications)
(Performance Management)
(Human Resources Office)
(Office Administration Team)
(Contract Services Team)**



**Business Office
(Finance & Budget Team)
(Grants Team)**

Patti DeFazio
Business Office Director
Executive 2, Exempt
D1101 00026708

Jan Tønning
Manager 2, FB&A
D1101 00025338

Vicki Wills
Strategic Advisor 3, IT
D1101 00016680

Vacant
Principal Accountant
D1101 00011030

Cherrylyn Catalon
Accountant
D1101 10001245

Thi T. Tran
Accountant
D1101 00011290

Ngoc Bui
Finance Analyst, Senior
D1101 00021927

Sarah McCaghren
Finance Analyst, Senior
D1101 10003311

Amy Widman
Finance Analyst, Senior
D1101 00025923

Haritha Narra
Finance Analyst (.5 FTE)
D1101 10003237

Darin Virakpanyou
Principal Accountant
(ilo Manager 1, FB&A)
D1101 10003312

Jason Goetz
Accounting Technician II-BU
D1101 00011184

Jessica Nasa
Accounting Technician II-BU
D1101 00020622

William S. Domansky
Strategic Advisor 1, FB&A
D1101 00011287

Frances O. Vanderyacht
Finance Analyst
D3311 00011206

Planning Office

Ryan Patrick Meeks
 Planning Office Director
 Executive 2, Exempt
 D2201 00015679

Mark A. Knutson
 IT Professional A, Exempt
 (ilo Strategic Advisor 3, Exempt)
 D2201 00019496

Vacant
 Strategic Advisor 2, IT (.75 FTE)
 D2201 00025506

Vacant
 Executive 1, Exempt
 D2201 00016618

Signe Olausen
 IT Professional A, Exempt
 D1101 10004919

Vacant
 IT Professional A, Exempt
 D2201 00024092

Shannon Scott Smith
 IT Professional A, Exempt
 00015688
 D2201 (.5 FTE) D4401 (.5 FTE)

Bonnie West
 IT Professional A, Exempt
 D2201 10002697

Patricia Kirkness
 IT Professional A, Exempt
 D3305 00019005

Aleya Rafique Ikbal
 IT Professional A, Exempt
 D3311 10002701

Joy Peterson
 IT Professional B
 D2201 00010985

Vacant
 IT Professional A, Exempt
 (ilo IT Systems Analyst)
 D3302 00023376

Margaret C. Mullin
 IT Professional A, Exempt
 D2201 00025917

Douglas L. Kelly
 Strategic Advisor 1, IT
 D2201 10003372

Tony John Pappas
 IT Professional A, Exempt
 D1102 10003470

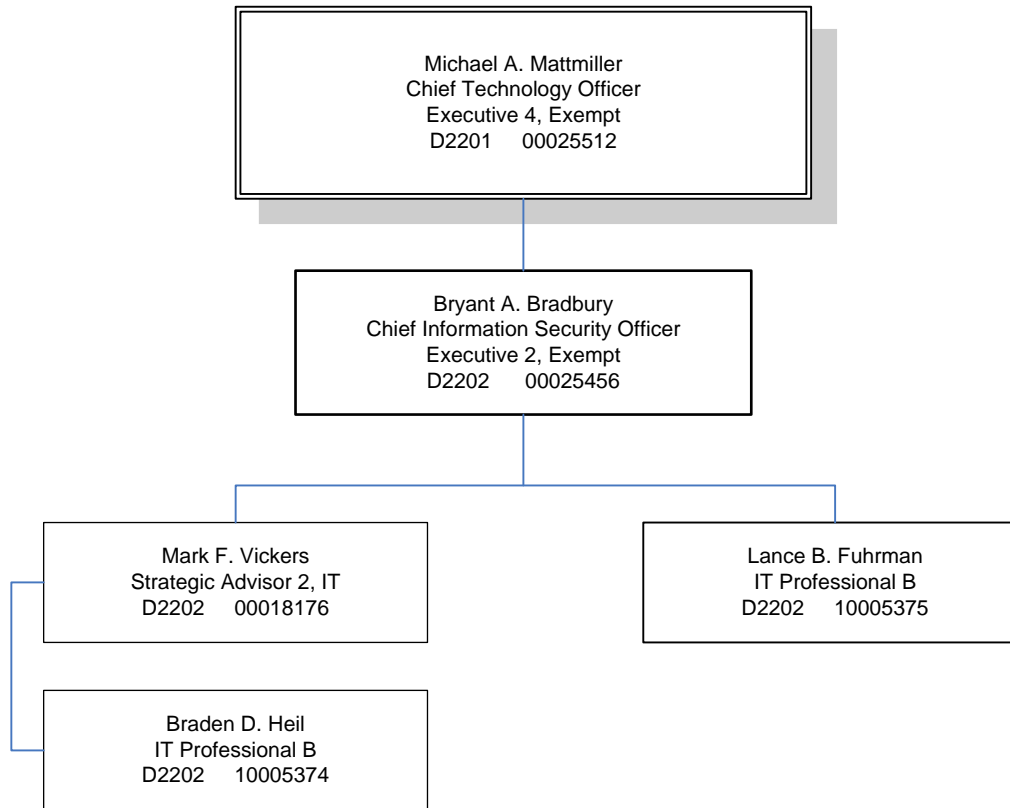
Clinton Kaku
 Strategic Advisor 3, Exempt
 D1101 10004920

Mary Conway
 Manager 2, IT
 D3304 10002705

David A. Johnson
 IT Professional B
 D1101 10005373



Information Security Office



**Engineering & Operations Organization
 (Network Infrastructure &
 Telecommunications Engineering Team)
 (Systems Engineering Team)
 (Fiber Team)**

Robert William Norris
 Engineering & Operations Director
 Executive 3, Exempt
 00010443
 D3301 (.25 FTE) D3302 (.25 FTE)
 D3304 (.25 FTE) D3310 (.25 FTE)

Mark Schmidt
 IT Professional A, Exempt
 D3311 10003310

Vacant
 IT Professional A, Exempt
 D3311 10005376

Kris Henry-Simmons
 IT Professional B
 D3311 00023492

Jonathan Hambrick
 IT Professional B
 D3308 00023056

David C. Davidson, Jr.
 IT Professional B
 D3308 10005117

Stephen Dickerson
 IT Professional B
 D3305 00025911

Michael D. Powell
 IT Professional B
 D3308 00015993

Vacant
 IT Professional B
 D3308 00023818

David Scott Sakamoto
 IT Professional A, Exempt
 D3302 00025330

John Jacobson
 IT Professional A, Exempt
 D3302 00025329

Robb Landis
 IT Professional B
 D3302 10002699

Loc Huynh
 IT Professional B
 D3302 10003522

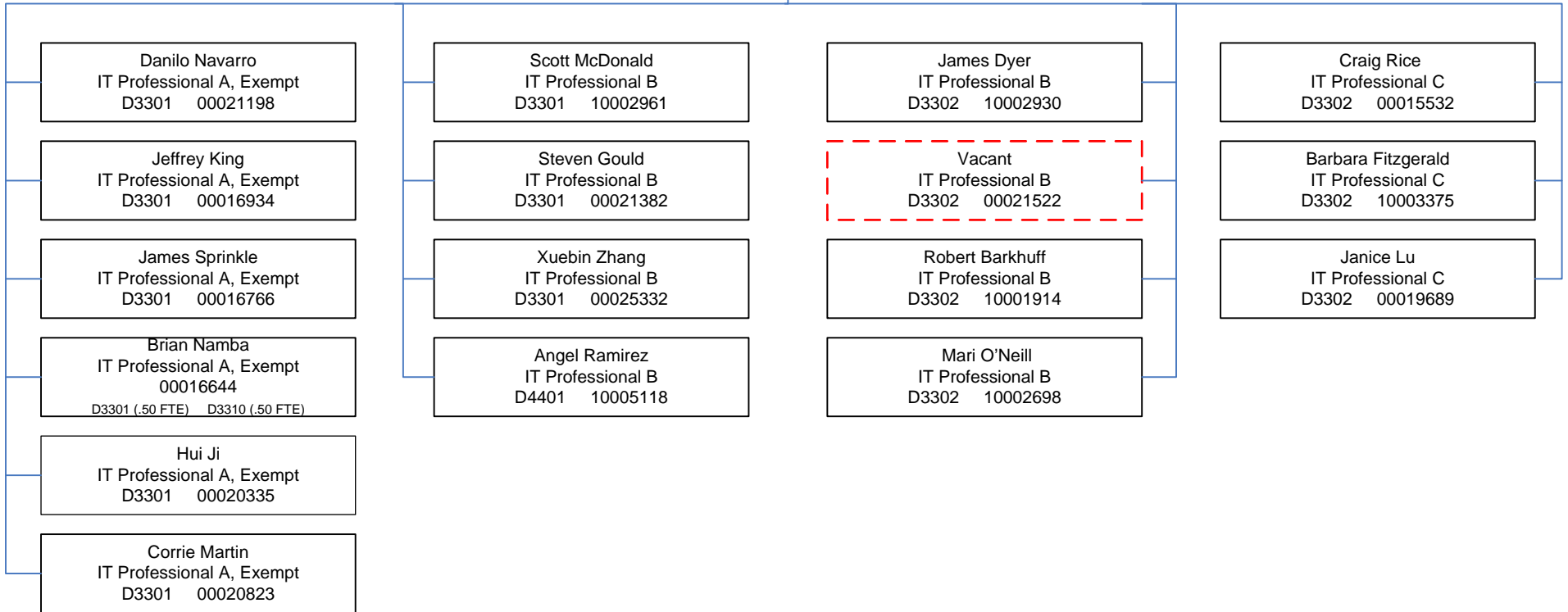
Shane Schnell
 IT Professional B
 D3301 00021195

**Engineering & Operations Organization
(Enterprise Systems Operations)**

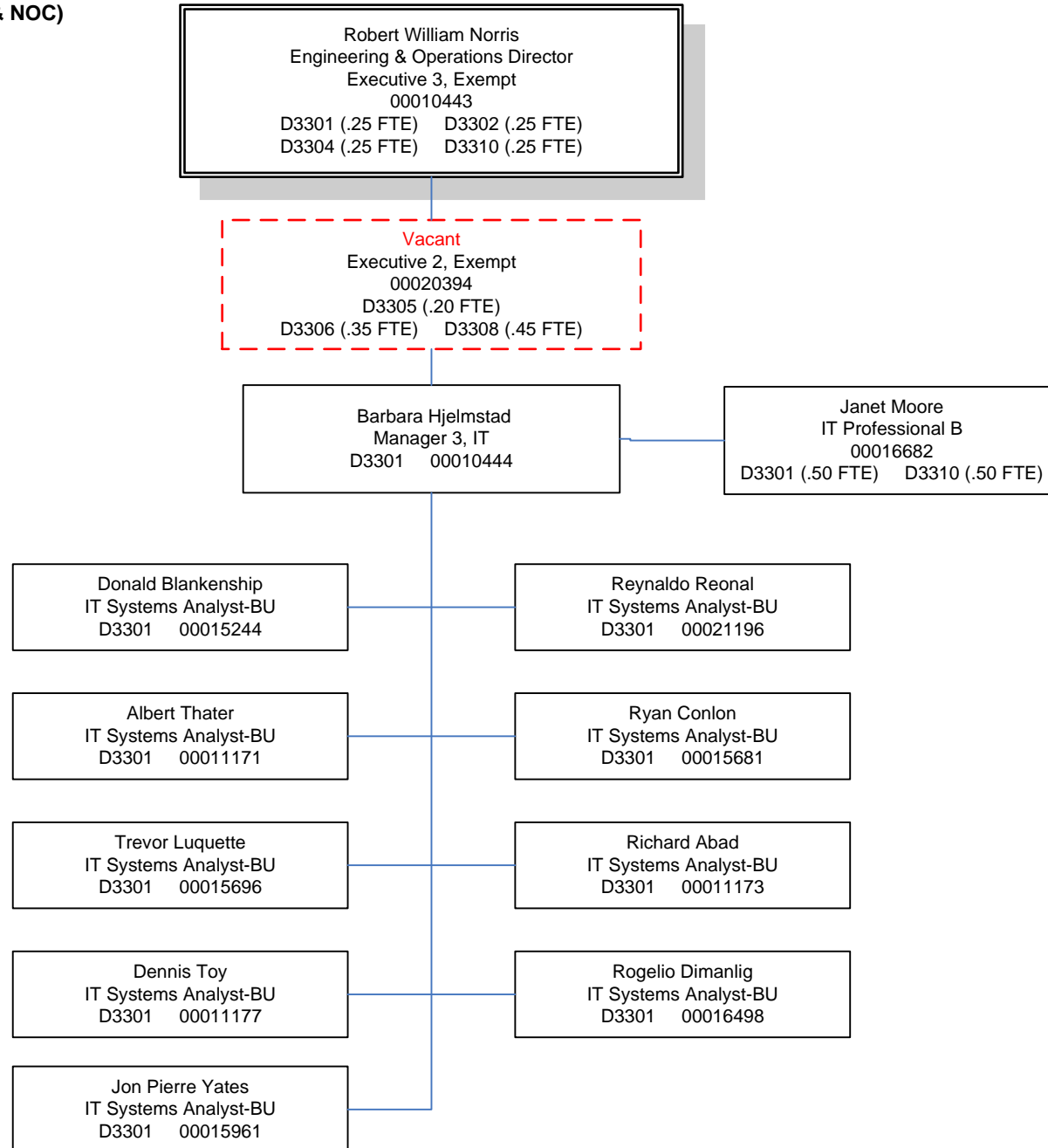
Robert William Norris
 Engineering & Operations Director
 Executive 3, Exempt
 00010443
 D3301 (.25 FTE) D3302 (.25 FTE)
 D3304 (.25 FTE) D3310 (.25 FTE)

Vacant
 Executive 2, Exempt
 00020394
 D3305 (.20 FTE)
 D3306 (.35 FTE) D3308 (.45 FTE)

Barbara Hjelmstad
 Manager 3, IT
 D3301 00010444



Engineering & Operations Organization
 (Data Center Operations & NOC)

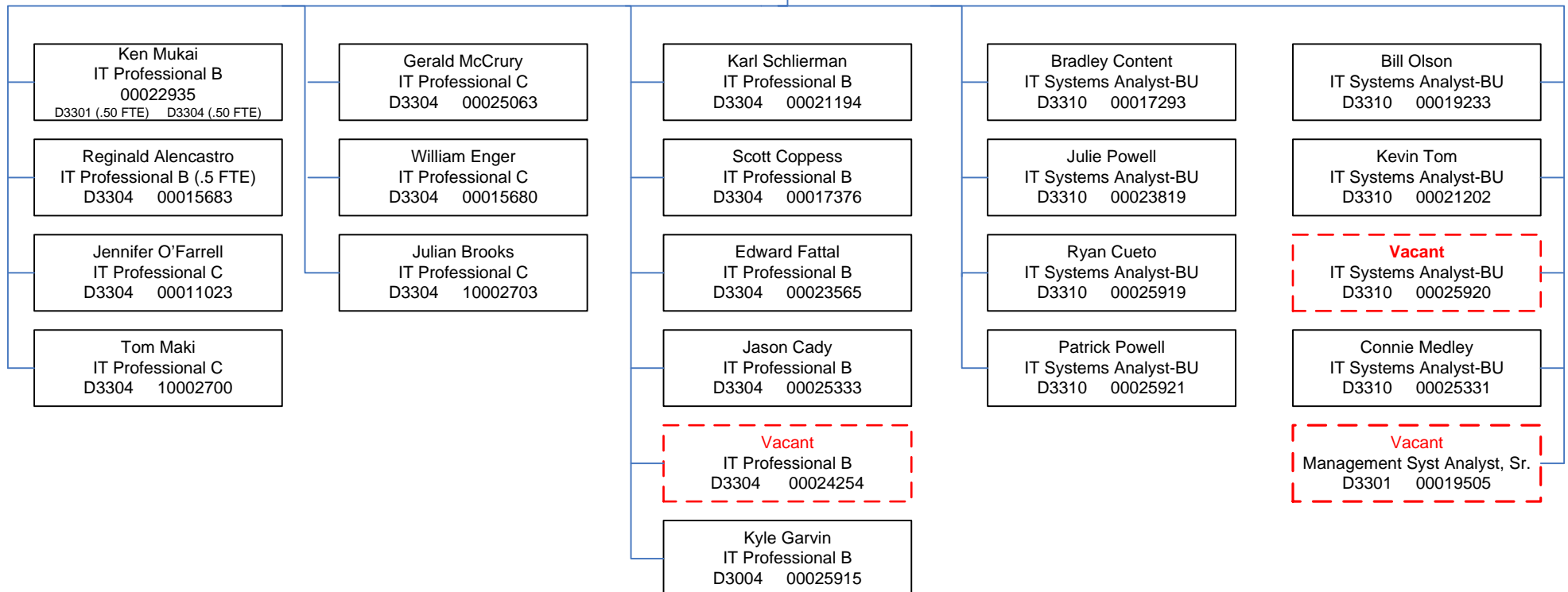


Engineering & Operations Organization
(Device Management & Support Team)

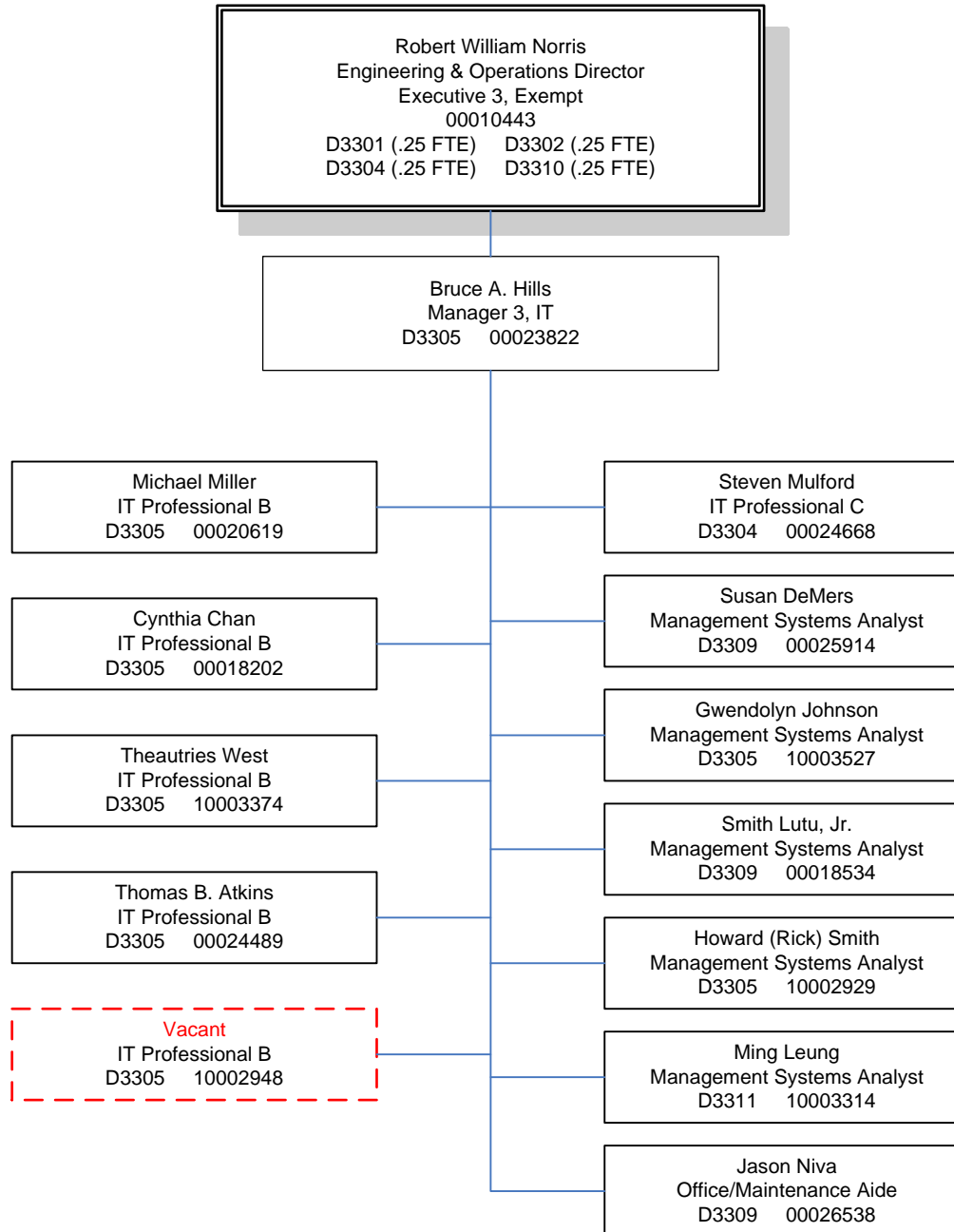
Robert William Norris
 Engineering & Operations Director
 Executive 3, Exempt
 00010443
 D3301 (.25 FTE) D3302 (.25 FTE)
 D3304 (.25 FTE) D3310 (.25 FTE)

Bruce A. Hills
 Manager 3, IT
 D3305 00023822

Elaine R. Bautista
 IT Professional B
 D3304 00015699



Engineering & Operations Organization
 (Application Support)
 (IT Asset Management)

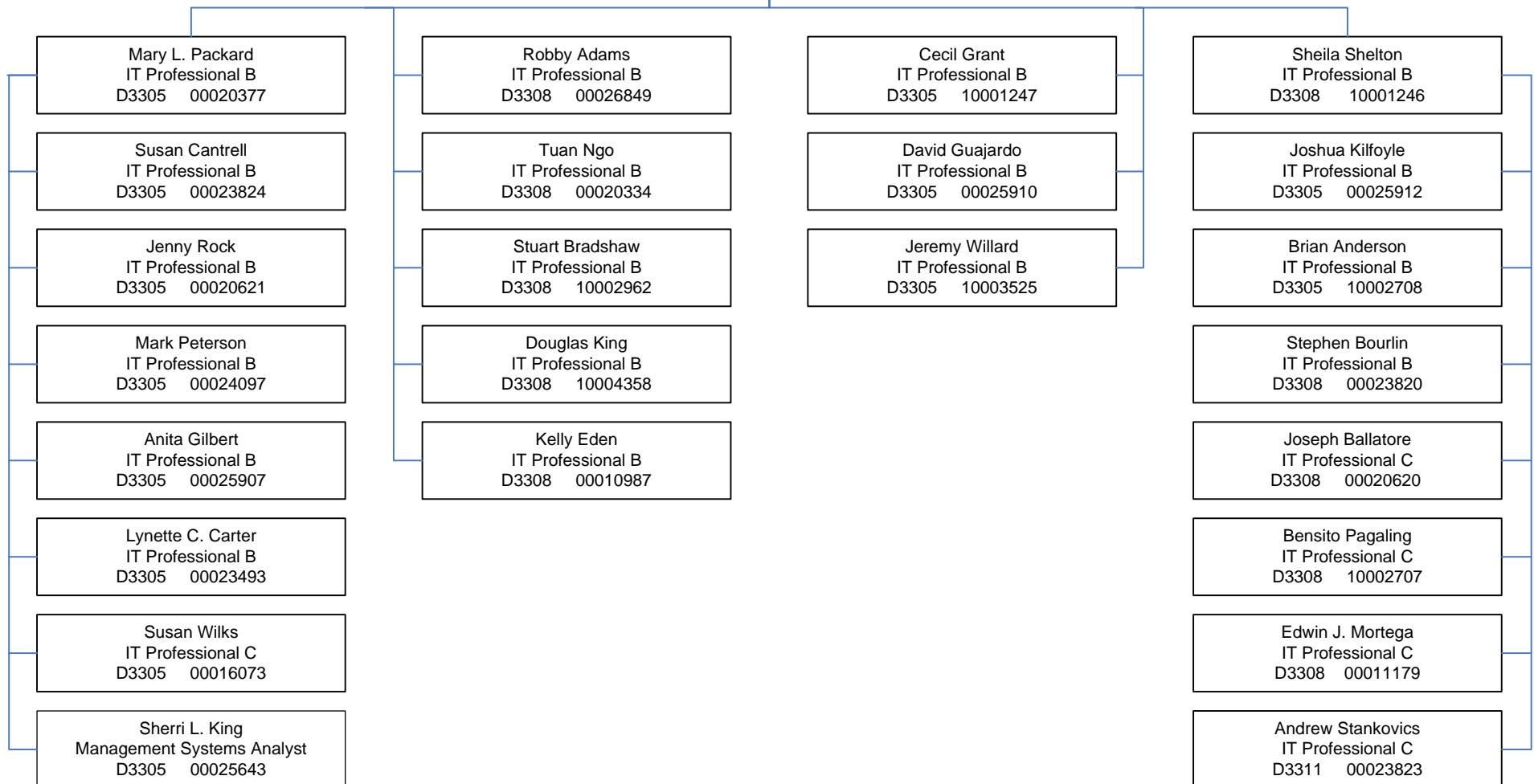


**Engineering & Operations Organization
(Network & Telecommunications Operations)**

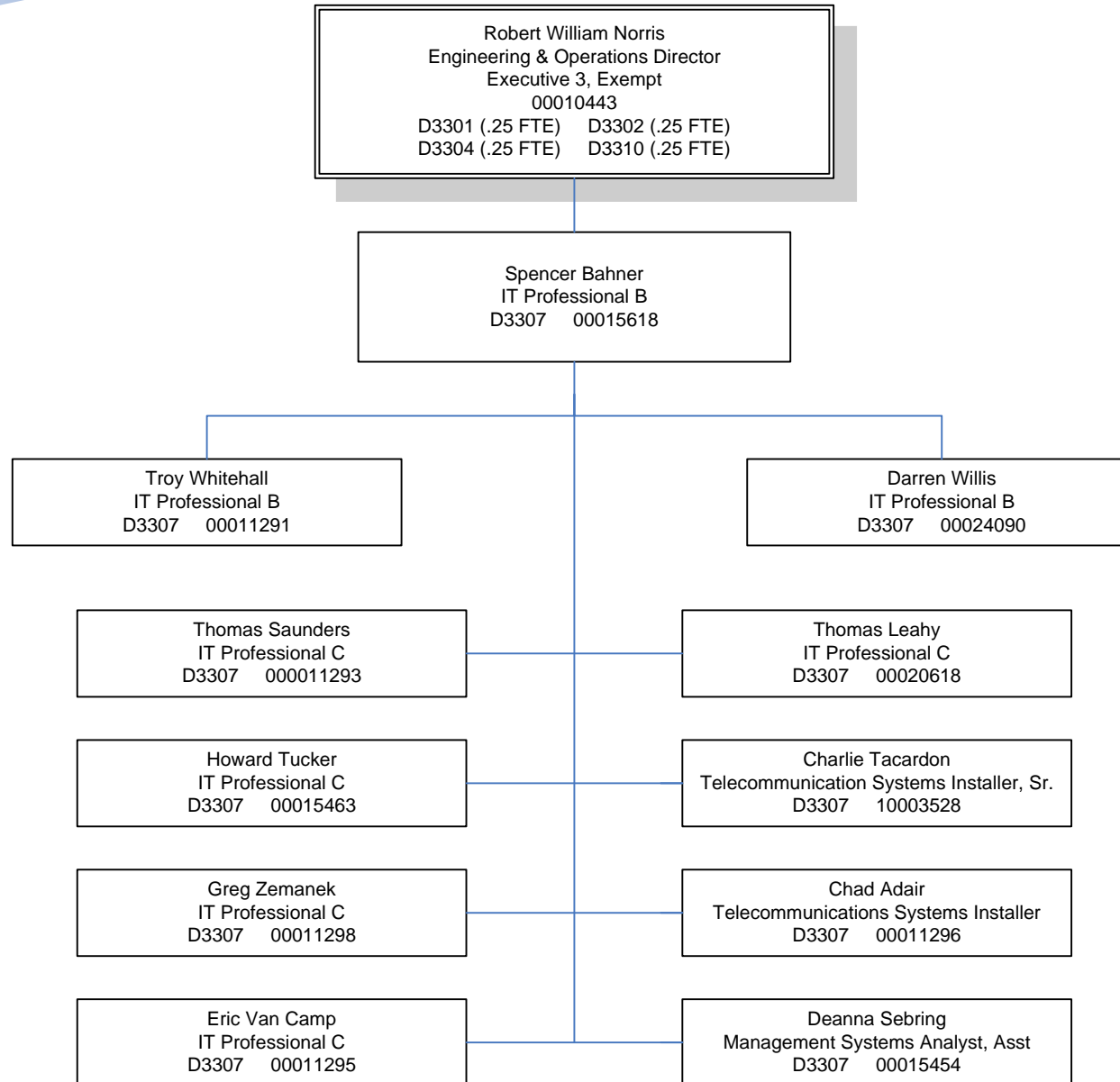
Robert William Norris
 Engineering & Operations Director
 Executive 3, Exempt
 00010443
 D3301 (.25 FTE) D3302 (.25 FTE)
 D3304 (.25 FTE) D3310 (.25 FTE)

Vacant
 Executive 2, Exempt
 00020394
 D3305 (.20 FTE)
 D3306 (.35 FTE) D3308 (.45 FTE)

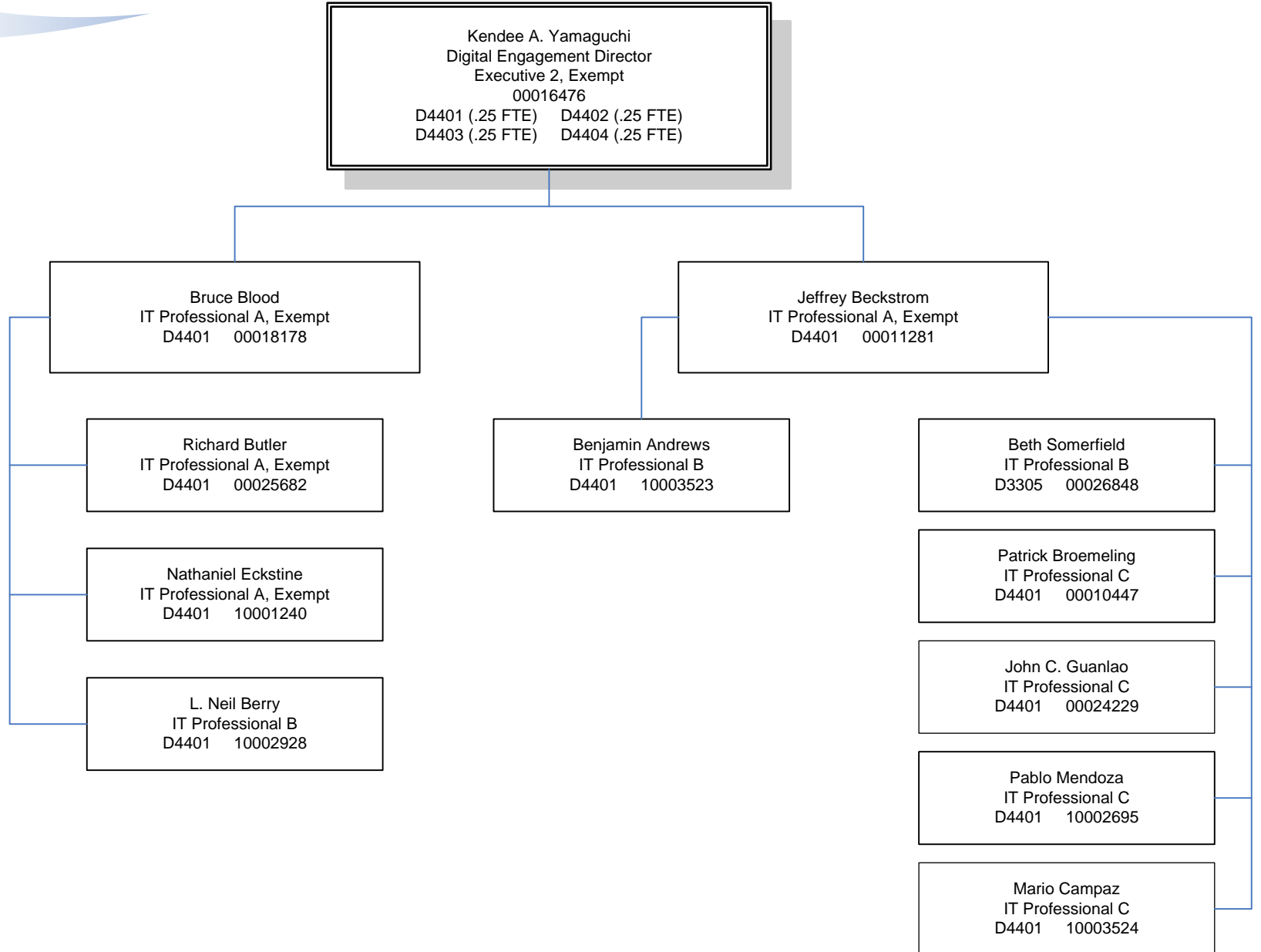
Kelly Walker
 IT Professional A, Exempt
 00025909
 D3305 (.5 FTE) D3308 (.5 FTE)



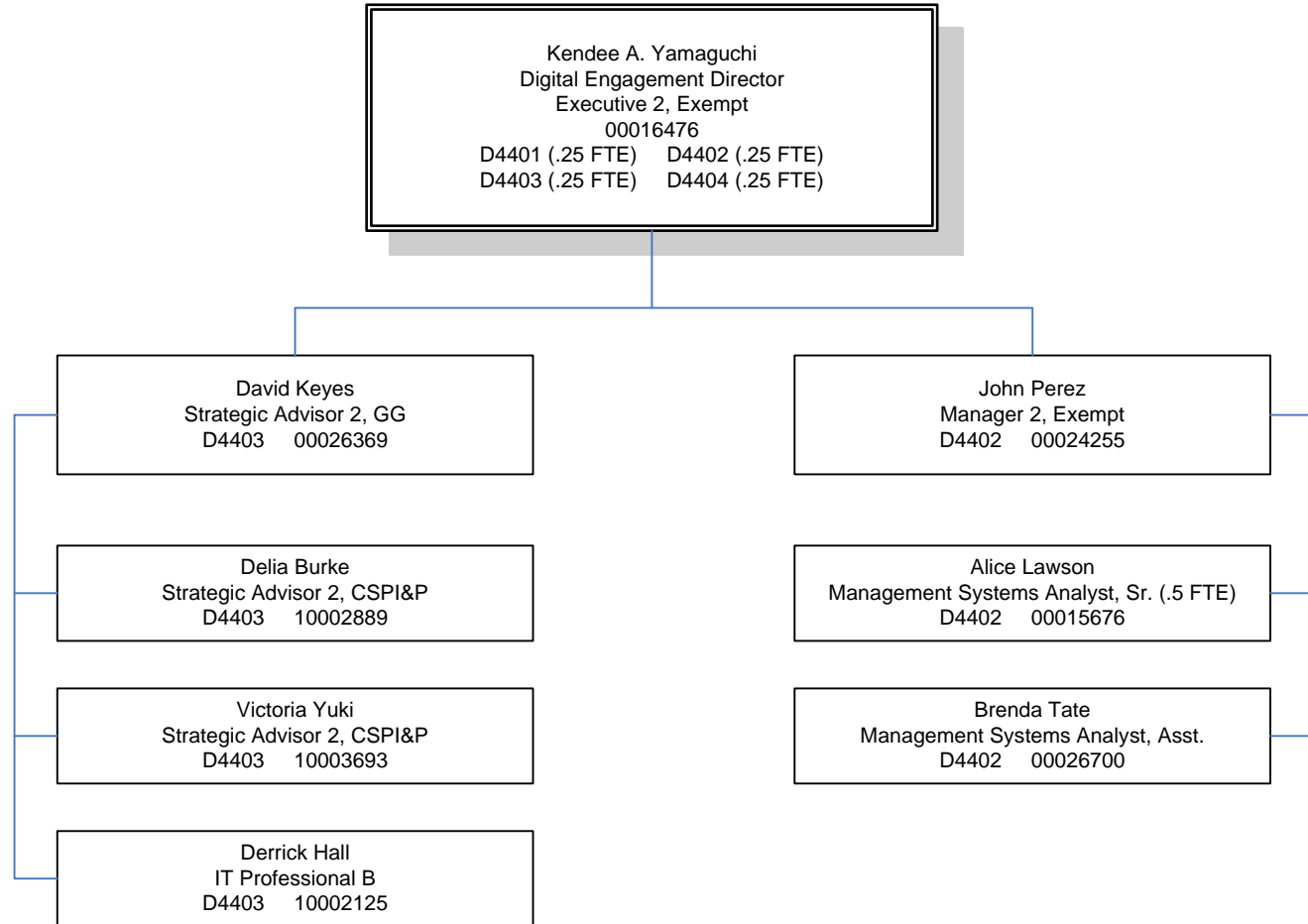
**Engineering & Operations Organization
(Radio Network & Communication Shop)**



**Digital Engagement
(Web Team)
(Open Data Team)**



**Digital Engagement
(Community Technology)
(Cable & Broadband Office)**



**Digital Engagement
(Seattle Channel)**

Kendee A. Yamaguchi
 Digital Engagement Director
 Executive 2, Exempt
 00016476
 D4401 (.25 FTE) D4402 (.25 FTE)
 D4403 (.25 FTE) D4404 (.25 FTE)

John Giamberso
 Manager 3, Exempt
 D4404 00025337

Daryl Peck
 IT Professional B
 D4404 10002066

Laurie Bullock (PT/JS)
 IT Professional C
 D4404 10002067

Jennifer Nerad (PT/JS)
 IT Professional C
 D4404 10002067

Curt Weiss
 Strategic Advisor 2, Exempt
 D4404 10002062

Lori Patrick
 Strategic Advisor 2, Exempt (.5 FTE)
 D4404 10003469

Megan Erb Ohmstede
 Strategic Advisor 2 CSPI&P
 D4404 10002123

Edwardo Escalona
 Manager 2, CSPI&P (ilo Mgr 3, CSPI&P)
 D4404 00025772

Vincent Pierce
 Video Specialist II
 D4404 10003468

Matthew Peterson
 Video Specialist II
 D4404 10004359

Ian Devier
 Video Specialist II
 D4404 00017349

Lisa Yeakel
 Public Relations Supervisor
 D4404 10002546

Ralph Bevins
 Video Specialist II
 D4404 00025457

Shannon Gee
 Video Specialist II
 D4404 00017250

Randall Anthony Eng
 Video Specialist II
 D4404 00008852

Margaret Lycett
 Video Specialist II
 D4404 00024205