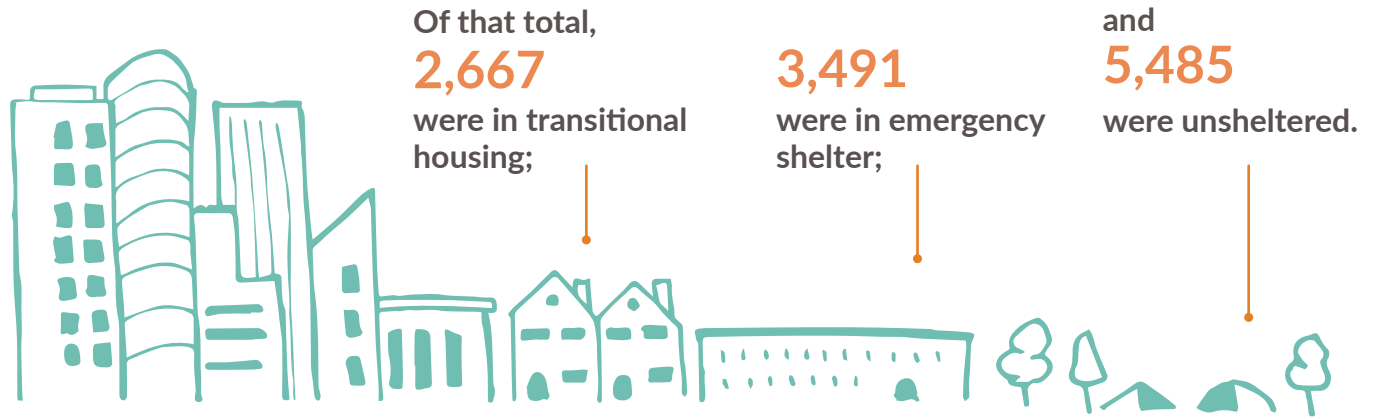


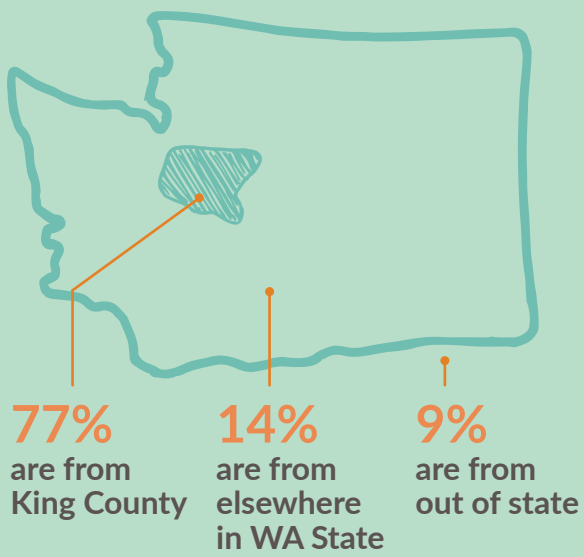
On Jan 27, 2017

## 11,643

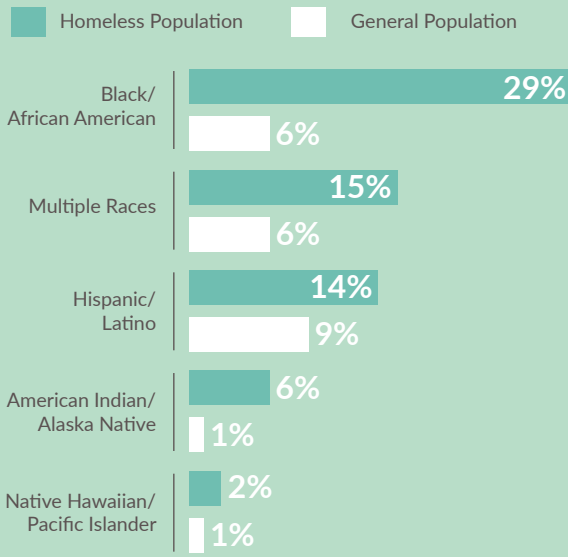
people were experiencing homelessness in King County.



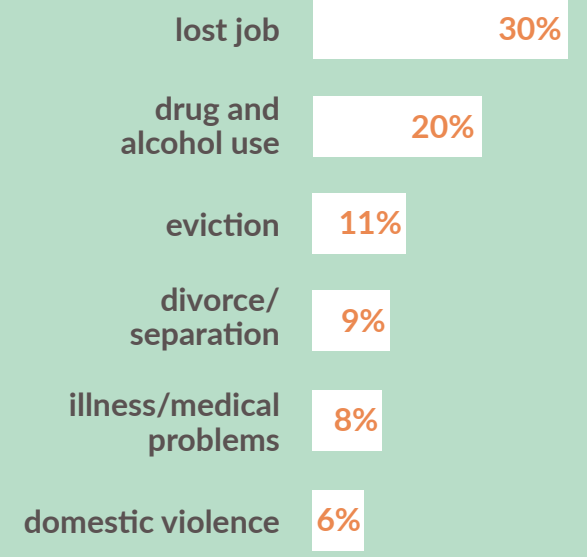
### People experiencing homelessness are our neighbors.



### Homelessness disproportionately impacts people of color.



### People experience homelessness for a variety of reasons.



### People experiencing homelessness need housing.

Over **90%** of people experiencing homelessness would take safe/affordable housing if it were offered.

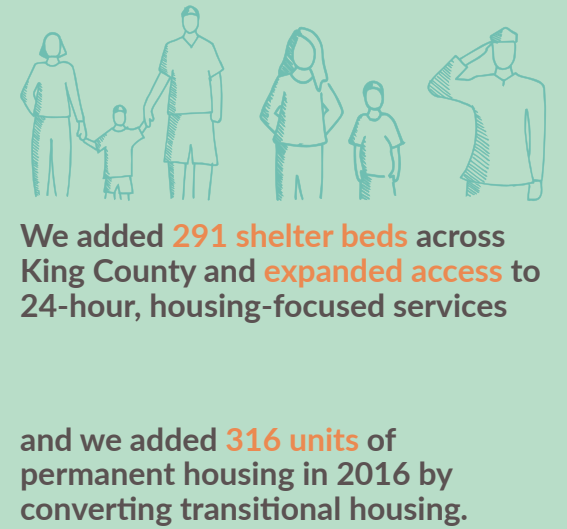


Rental assistance and more affordable housing were cited as the top two supports needed to end their experience of homelessness.

### We are moving more people from homelessness to housing – and doing it faster than ever.



### We are improving our system to house even more people.



## Join Us



Say Hello



Share Your Time



Speak Up



Rent Or Hire

For more information on Count Us In, visit [AllHomeKC.org](http://AllHomeKC.org)

Produced in partnership with Seattle University's Project on Family Homelessness.

All data from 2017 Count Us In unless noted.