



# LET'S TALK!

Seattleites want an affordable city for all. HELP CREATE IT!

Tell us your thoughts on DRAFT neighborhood zoning changes.

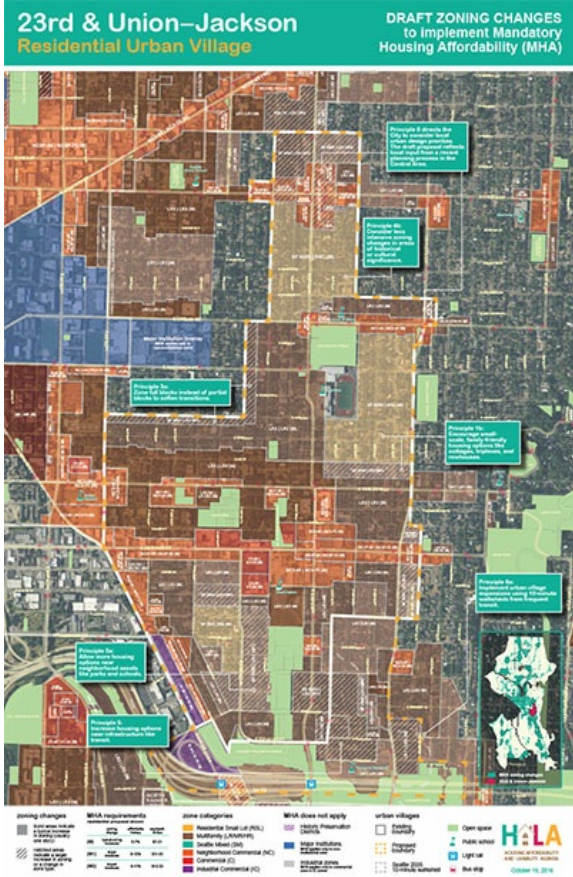
## Draft maps for neighborhoods out now: Please tell us your thoughts on MHA proposed zoning changes.

We have released DRAFT maps for your review. Extensive community outreach has brought constructive ideas and local knowledge to the process of developing principles and those principles are reflected in draft proposed zoning changes.

We know that zoning and land use can be sorta wonky. We also know that Seattleites are up to the challenge and care about getting more affordable housing in our city. For those of you not yet land use experts, we have created a video that will help you make sense of the maps and guide your feedback.

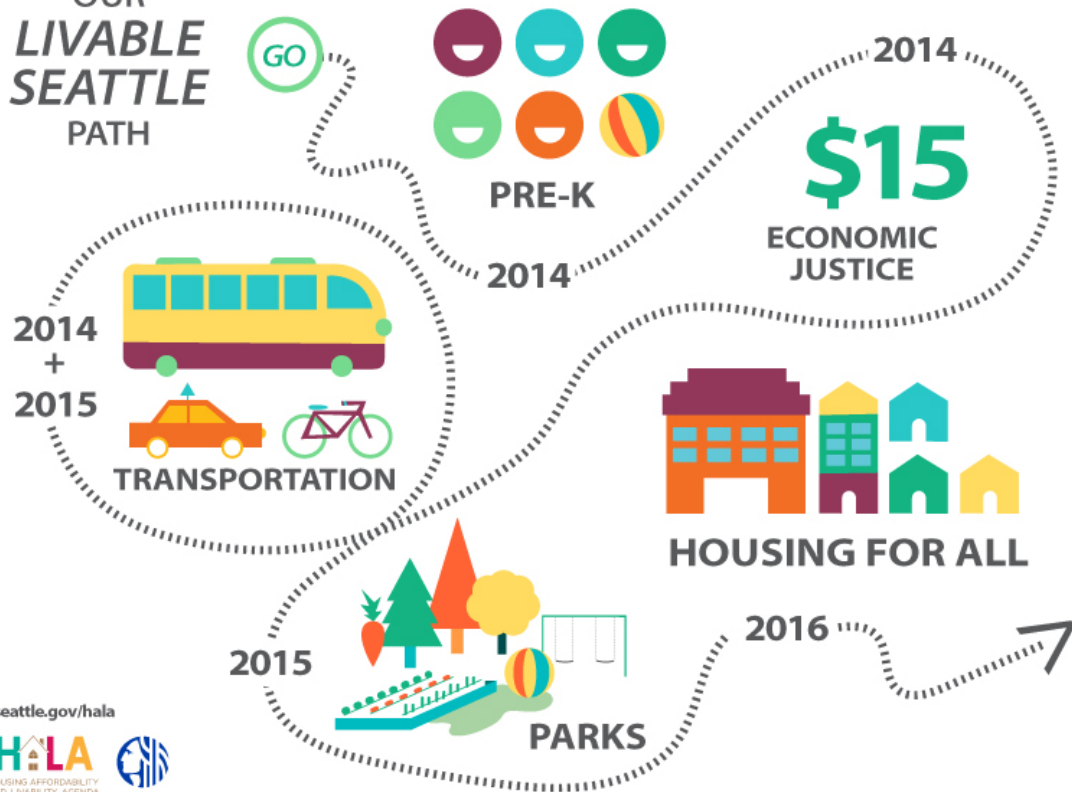
We want to hear from you so join the online conversation, head to [hala.consider.it](http://hala.consider.it). As always, in-person meetings are a big part of this process, too—see below.

Get in touch with us. We are happy to come to your meeting or answer questions: [hala@seattle.gov](mailto:hala@seattle.gov)



## YOU'RE INVITED: UPCOMING EVENTS

# OUR LIVABLE SEATTLE PATH



## Come to a Community Meeting

We want to talk to you in person. We've planned five events from now until the end of January so we can meet you and look at proposals to implement MHA in neighborhoods across the city. This is a complex proposal and one that we know will be improved upon if you share your thoughts. Want to prepare in advance? Watch our video on how to read the maps and view the map online!

Also, other departments will be attending these events to answer questions relevant to neighborhoods such as transportation, parks and others.

Would you like to invite us to your event? Email [halainfo@seattle.gov](mailto:halainfo@seattle.gov)

[HALA Event Calendar](#)

## Dates and times:

- **NW Neighborhoods:**  
[December 3, 10am-12pm, Bitter Lake Community Center](#)
- **SW Neighborhoods:**  
[December 7, 5:30-7:30pm, Shelby's Bistro and Ice Creamery](#)
- **NE Neighborhoods:**  
[December 13, 6-8pm, Ravenna Community Center](#)
- **Central Neighborhoods:**  
[January 10, 6pm-8pm, Optimism Brewing](#)
- **SE Neighborhoods:**  
[January 21, 10am-12pm, The Royal Room](#)

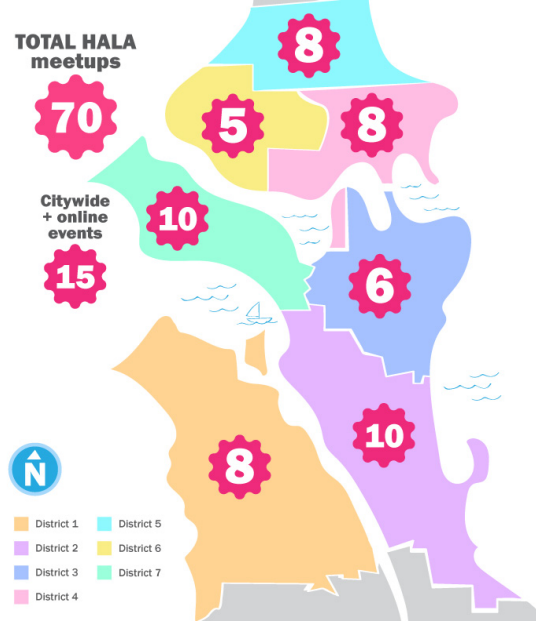
## FEEDBACK WE'VE HEARD FROM YOU AND OTHERS

Over the course of the last several months we have hosted or visited over 70 events and meetings across Seattle (that's over 2 per week!). At every event we attend, we listen and take note of what we hear from you. As we move into a new year, we have summarized much of what we've heard so you can read a snapshot of what the city is saying about our affordable housing efforts. Below are a few of the summaries we have created. There's more to read and look at on our [website](#).

- [Neighborhood Feedback in a Nutshell](#)
- [Focus Group MHA Principles feedback summary](#)

- [MHA Principles 2-pager](#)
- [Closed questions from Consider.it](#) (these can be viewed by clicking on the white tab)

We're happy to answer your questions:  
[halainfo@seattle.gov](mailto:halainfo@seattle.gov)



## CELEBRATING OUR ACCOMPLISHMENTS

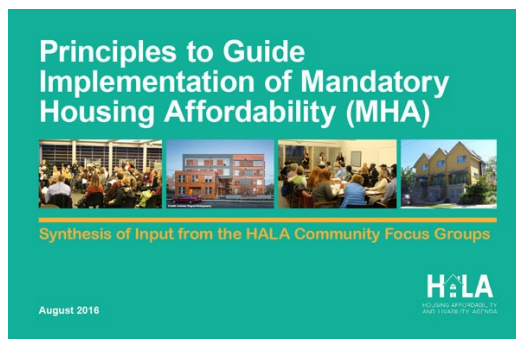
Looking back on the last several months of HALA work, there are many accomplishments. Thank you for your input, your time and thank you for continuing to support the Seattle Housing Levy. It's obvious that Seattleites want an affordable city for all.

### Some highlights are:

- Seattle voters renewed and expanded the Seattle Housing Levy
- The following addition tenant protections were put into place: Source of Income Discrimination, Improvement of Tenants Rights, Tenant Relocation Assistance
- Multifamily Tax Exemption was expanded to allow for the construction of more affordable housing, especially family-sized homes.
- The community has made important contributions to the development of Mandatory Housing Affordability Residential Framework

## Focus Groups Update

[Focus groups](#) are delving into MHA draft proposed zoning changes for neighborhoods across the city and seeing the principles they helped develop applied to those neighborhoods. Learn about the principles by reading [this summary](#) or check the [Focus Group page](#).



Jessica Brand  
[www.seattle.gov/hala](http://www.seattle.gov/hala)  
[jessica.brand@seattle.gov](mailto:jessica.brand@seattle.gov)  
 Seattle Neighborhoods



[Unsubscribe](#)

[Update Profile](#) | [About our service provider](#)

Sent by jessica.brand@seattle.gov in collaboration with



Try it free today