



Above, view of north facade, looking south across Southwest Othello Street.

Below, detail of the projecting bay on the north facade, which is part of the Officer's Room.





Above, oblique view of east and north facades, looking southwest across the alley.

Below, partial view of south facade looking northwest.

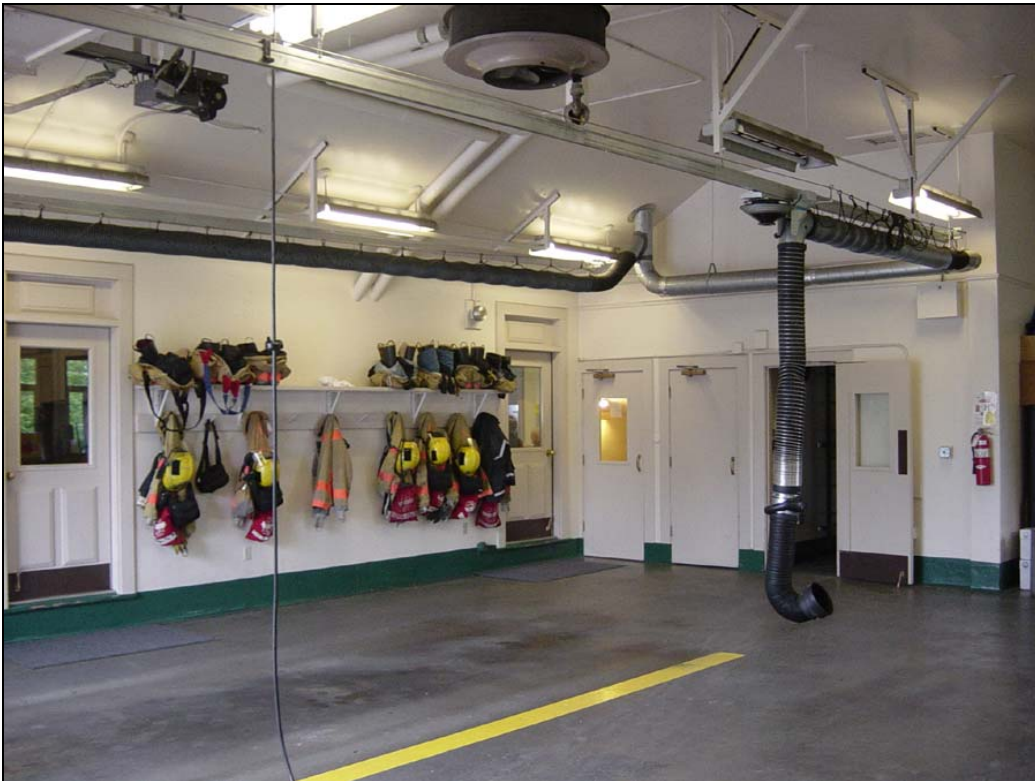






Above, view looking southeast into the two bay Apparatus Room.

Below, view looking northeast. Doors on the left lead to the Watch Office and Day Room.





Above, view looking north at the fireplace in the Watch Office (the original Instrument Room).

Below, view looking south in Watch Office at the watch desk and Apparatus Room beyond.







Above, view north in the Officer's Room. Arch head windows are features of the projecting bay.

Below, view looking west in the Day Room (the former Dormitory), and into the Watch Room beyond.

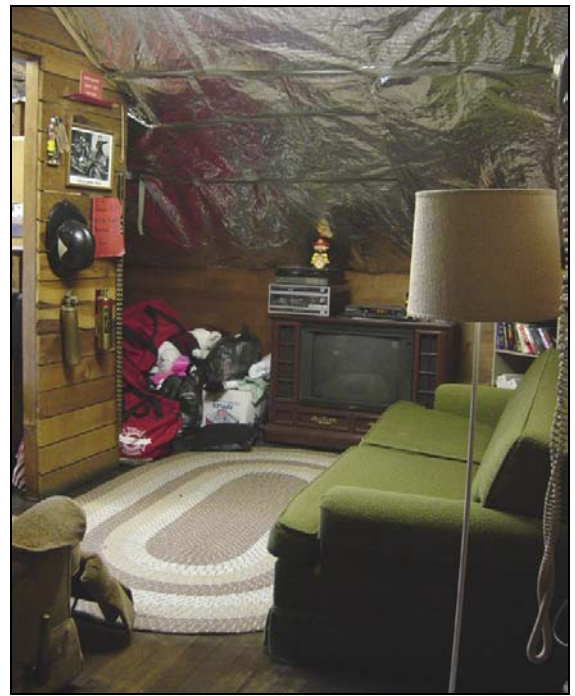
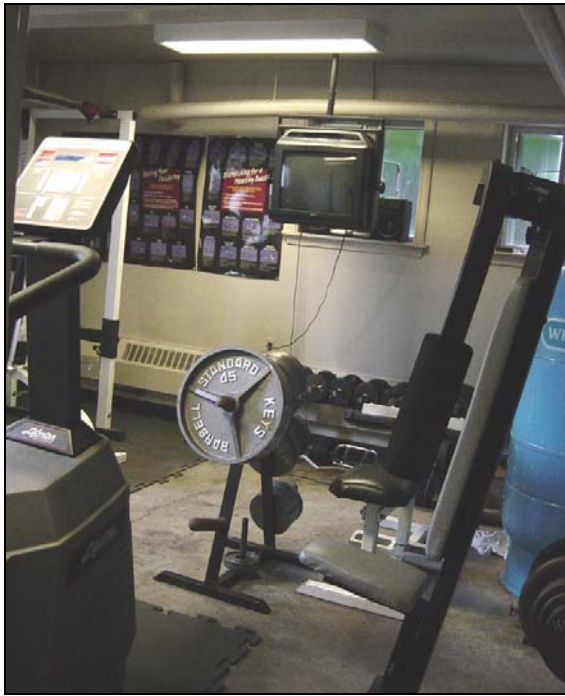




Above, view of the Day Room, looking northeast, with the dining area in the foreground and the Beanery / Kitchen and the back exit hall beyond. These rooms date from a remodel in 1986 - 1987.

Below, partial view of the L-shaped Bunk Room, originally a part of the Dormitory, looking southwest.





Above left, view of Weight Room in the Basement looking south. This space was created from an earlier Store Room in the late 1980s. Above right, a view looking south at the unfinished space on the Second Floor, which is a Store Room/Lounge.