



Above left, an original door frame opening with new door. Above right, an original door and frame.

Below, view of north side of building, and cadet class in training.





Above, view of the South Apparatus Room, looking southeast.

Below, view of the South Apparatus Room, looking northeast.







Above, view of the North Apparatus Room, looking southeast, with Medic One unit in place.

Below, view of the Watch Office, looking southwest. This room was originally the Battalion Chief's Garage, and was converted in 1986.





Above, view of the Watch Office, looking northeast.

Below, view from the Watch Office looking east through the hallway to the Officer's Rooms, Lounge (Bullpen), and Beanery at the far end of the hall.





Above left, view of the Officer's Room looking north. Above right, view of the Medic Room looking north.

Below, view of the battery charging station in the hall west of the Bullpen.

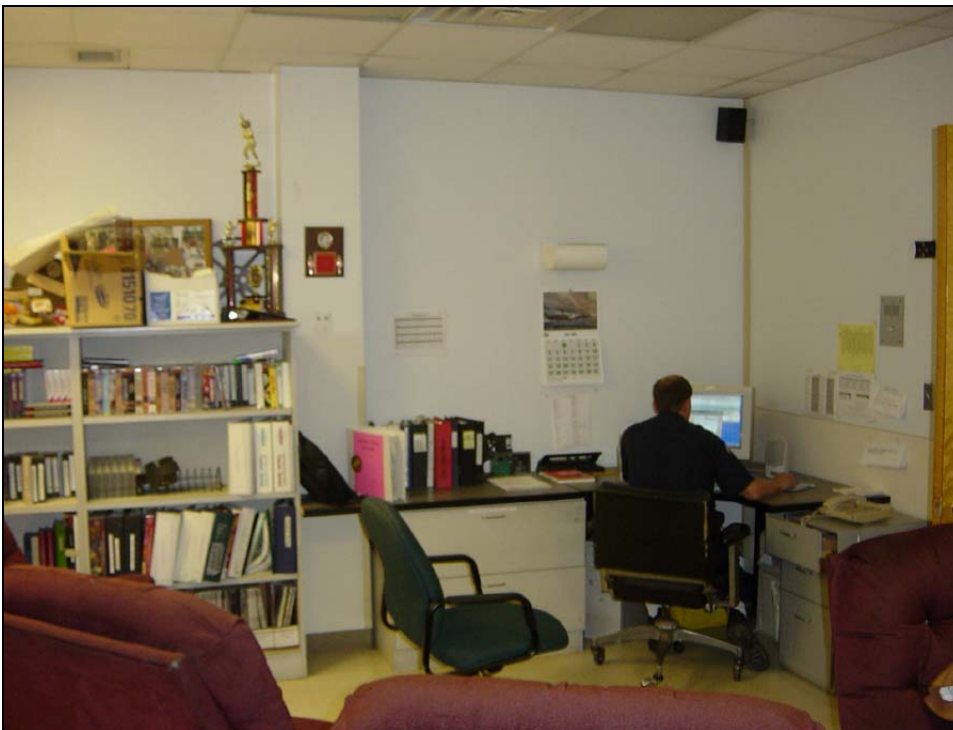






Above, view of the Bullpen (Lounge) looking northwest.

Below, view of Bullpen looking east at the study area.





Above left, view of the dining area of Beanery, looking east. Above right, detail of the food lockers on south wall of the Beanery.

Below left, view of the Kitchen, looking west. Below right, view of hall outside the Beanery, looking south.





Above, view of the lobby of the Training Center on the First Floor. The doors are original.

Below, view of the Training Center Classroom at the northeast corner of the First Floor, looking east. This space was remodeled in 1965, with a classroom replacing the original Handball Court.







Above, view of the Hose Tower Access and Workshop area looking west.

Below, view of the Storage Room.

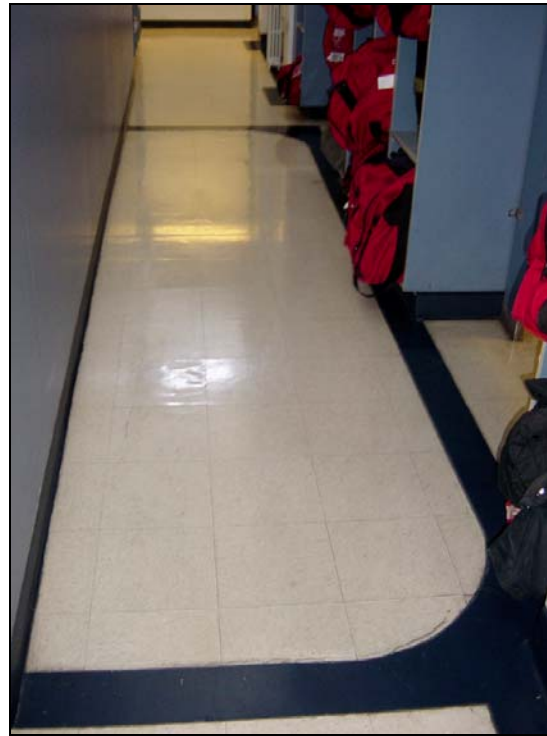




Above, detail of the concrete stair to the Second Floor.

Below, view up a fire pole to the Second Floor.





Above left, detail of the security gate at the top of the fire pole. Above right, detail of Second Floor Locker Room flooring. Black concrete delineates the edge of an original open well to the Apparatus Room below, which has been infilled with concrete slab to create a larger Locker Room.

Below left, view of Locker Room looking south. Below right, view of Locker Room with clerestory windows above at left.







Above, view of the Second Floor Exercise Room looking south.



Above, view looking up the Hose Tower from Basement.

Below, view of stair leading to the bottom of the Hose Tower.

