

CITY OF SEATTLE
FIRE STATION NO. 29
CONSTRUCTED 1970

DECEMBER 11, 2015 COMMAND STAFF WALK-THRU

BEFORE



① **Exterior**

- Existing Solid Brick Building
- Existing Roof Failing



② **Beanery**

- Limited Space
- Older Appliances & Fixtures



③ **Apparatus Bay**

- No Decon Room or Bunker Gear Storage
- Limited Work Area and Storage Space



EXISTING FLOOR PLAN



④ **Bunk Rooms**

- Open Bunk Room Layout
- Minimal Privacy and Secure Storage

CITY OF SEATTLE

FIRE STATION NO. 29 SEISMIC & SAFETY UPGRADE

DECEMBER 2015 | LEED® GOLD PENDING

DECEMBER 11, 2015 COMMAND STAFF WALK-THRU



① Exterior

- New Brick Addition & Seismic Upgrade
- New Energy Saving Roof, HVAC System & Windows

NEW ADDITIONS

Exterior

- Heat Pump
- Apparatus Striping
- Overhead Door
- New Exterior Lighting
- Fiberglass Windows
- New Roof
- New Metal Flashing
- New Downspouts
- New Scuppers
- Signs re-painted
- New Entry Doors
- Masonry Cleaned
- Security System

Interior

- Insulated Walls
- New Day Room
- New Restroom
- Beanery Appliances
- New Interior Lighting
- Fire Sprinkler System
- Private Bunk Rooms
- Personal Desks
- Apparatus Heaters
- Air Compressor
- Washer/Extractor
- Bunker Gear Racks
- Versa-Trac System
- Work Bench
- Radio Bench
- New Decon Room



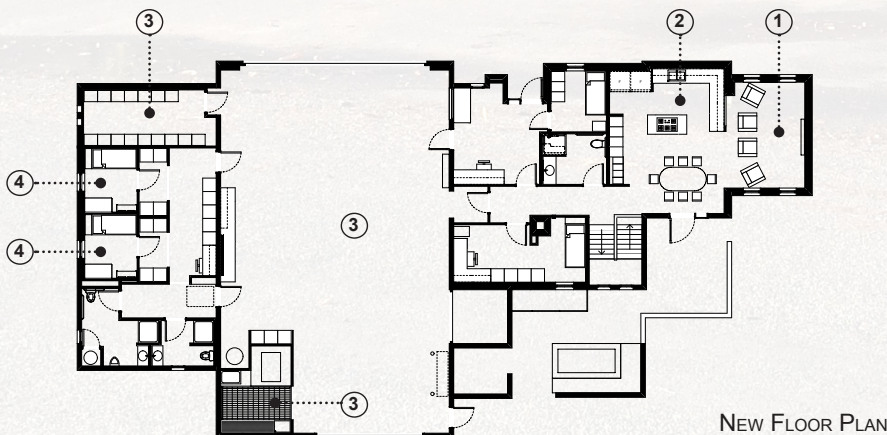
② Beanery

- New Beanery Layout w/ Stainless Steel Countertops
- New Energy Saving Fixtures & Appliances



③ Apparatus Bay

- New Decon Room, Work Area/Bench & Storage
- New Bunker Gear Storage Room



NEW FLOOR PLAN



④ Bunk Rooms

- New Private Bunk Rooms
- Increased Storage Capacity