



## N. Major Disaster Supply Storage / Receiving Area

*Area:* Neighborhood Station I: 80 square feet  
Neighborhood Station II: 160 square feet  
Neighborhood Station III: 200 square feet  
Battalion Station: 240 square feet

Receiving Area: 64 square feet.

*Function:* Receiving and storage area for major disaster supplies and SFD equipment pickup and return.

*Adjacencies:* Apparatus Bay and station administration areas. Provide exterior access for receiving of bulk and palletized goods.

### *Design Issues:*

Security: Chain link fence partitions.

Furnishings: Full height cabinetry and open shelving.

Finishes: See Chapter 5 Specification Section 09 00 00, Type C.

Doors: See Chapter 5 Specification Section 08 11 00.

Exterior doors should be wide enough to allow a forklift to deliver palletized supplies.

42" wide door to administration areas and apparatus bays.

Plumbing: No requirements.

HVAC: See Chapter 5 Specification Section 23 00 00.

Lighting: See Chapter 5 Specification Section 26 50 00.

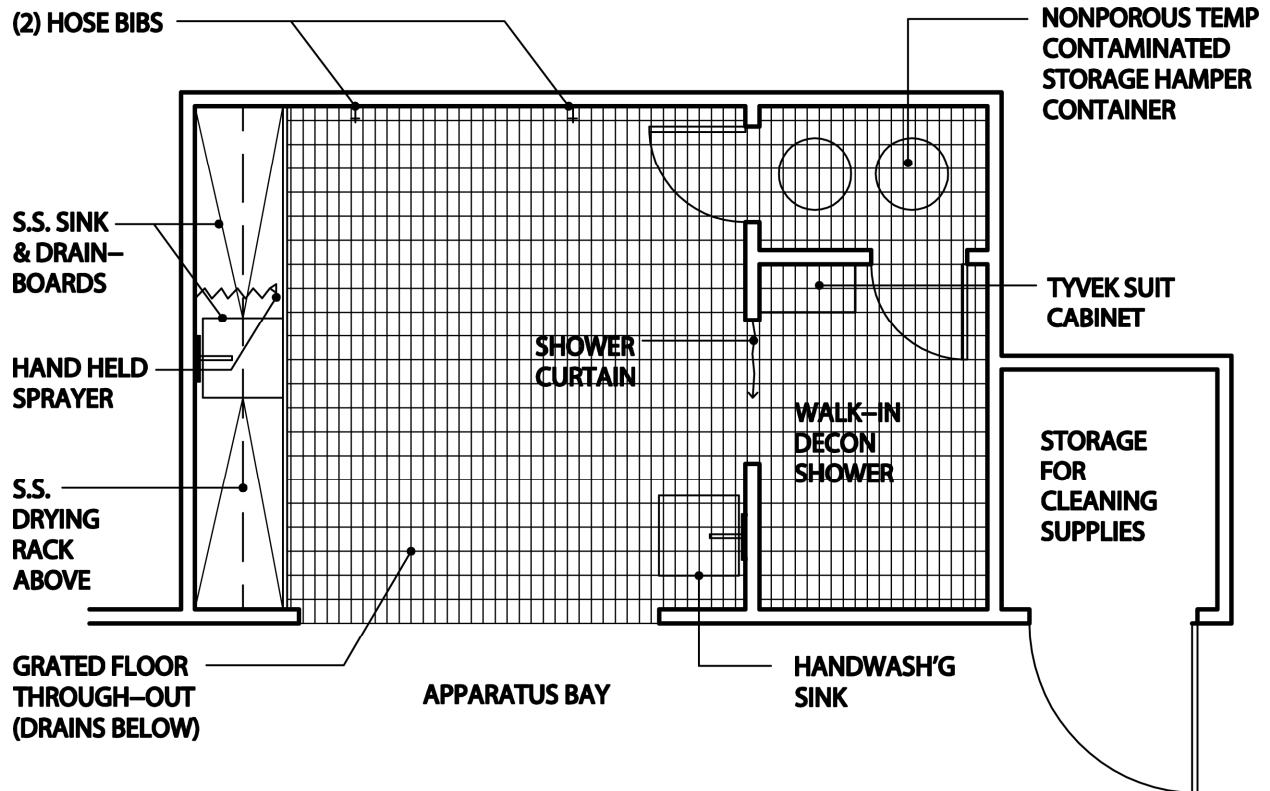
Power: No special requirements.

Communications: House PA.

Equipment: No requirements.

### *Other:*

- Confirm quantity of shelving and cabinetry for supplies with SFD.
- A receiving area separated from the storage room is desired so that supplies may be delivered when station personnel are away from the station.
- Provide floor space for containers of foam, pallets, etc.
- Provide corner guards throughout.





## O. Decon / Wash Alcove

*Area:* 175 square feet.

*Function:* Decontamination of personnel, personal gear and equipment; storage for cleaning supplies, vehicle washing supplies, and equipment.

*Adjacencies:* Apparatus Bay.

### *Design Issues:*

Security: No requirements.

Furnishings: Cabinet for Tyvek suits at shower area  
Bins for bio-hazard collection  
Cabinets for cleaning supplies.  
Wall hangers for mops.

Finishes: See Chapter 5 Specification Section 09 00 00, Type C.

Doors: None required or desired.

Plumbing: Institutional hot and cold hose bibb with hose and spray nozzle.  
  
14 ga. Stainless steel single bowl (30"x24"x14") scullery sink with integral sloped drainboard, 12" backsplash, and full support legs.  
Service style faucet with hands-free stainless steel commercial hose sprayer on riser with spring guide.

Eye wash station with tempered water.

Grated floor over depressed concrete slab with floor drains.

HVAC: See Chapter 5 Specification Section 23 00 00.

Lighting: See Chapter 5 Specification Section 26 50 00.

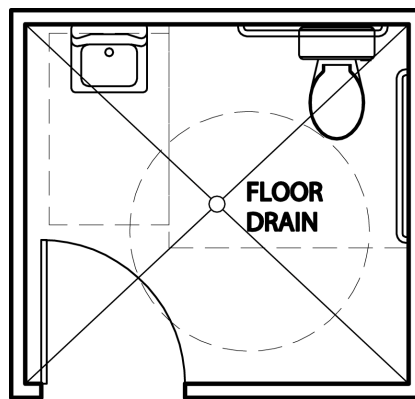
Power: Provide GFI outlets at all wet areas.

Communications: Phone, House PA.

Equipment: No requirements.

### Other:

- Provide privacy at shower area





**P. Apparatus Restroom - Unisex**

*Area:* 60 square feet

*Function:* Unisex restroom.

*Adjacencies:* Apparatus Bays.

*Design Issues:*

Security: Privacy lock.

Furnishings: No requirements.

Finishes: See Chapter 5 Specification Section 09 00 00, Type E.

Doors: See Chapter 5 Specification Section 08 11 00.

Plumbing: Toilet (ADA height where required).

Sink (ADA height where required). No stopper.

No urinal.

Floor drain.

HVAC: See Chapter 5 Specification Section 23 00 00.

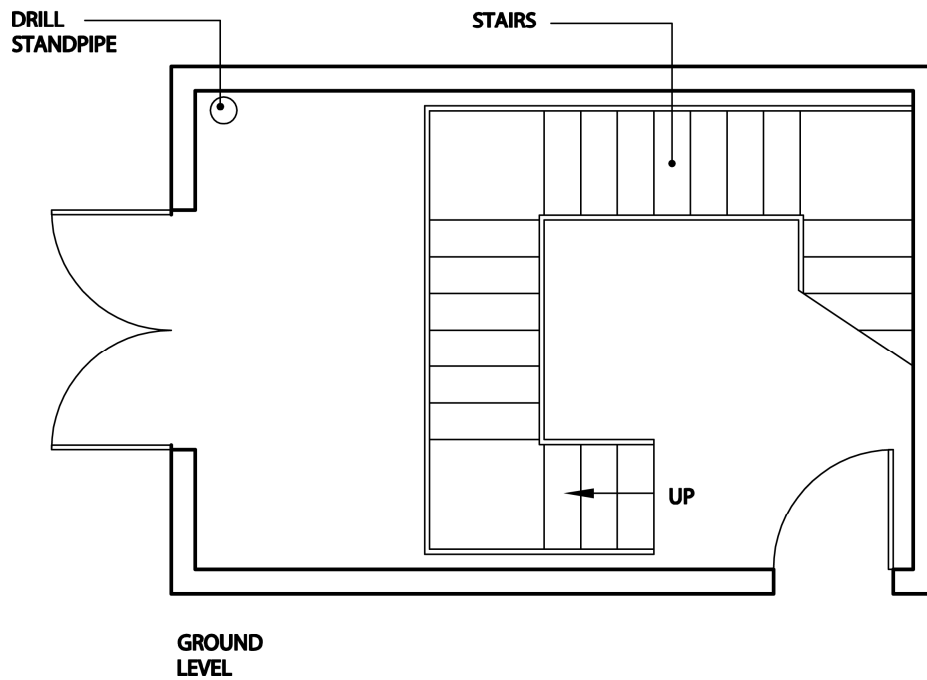
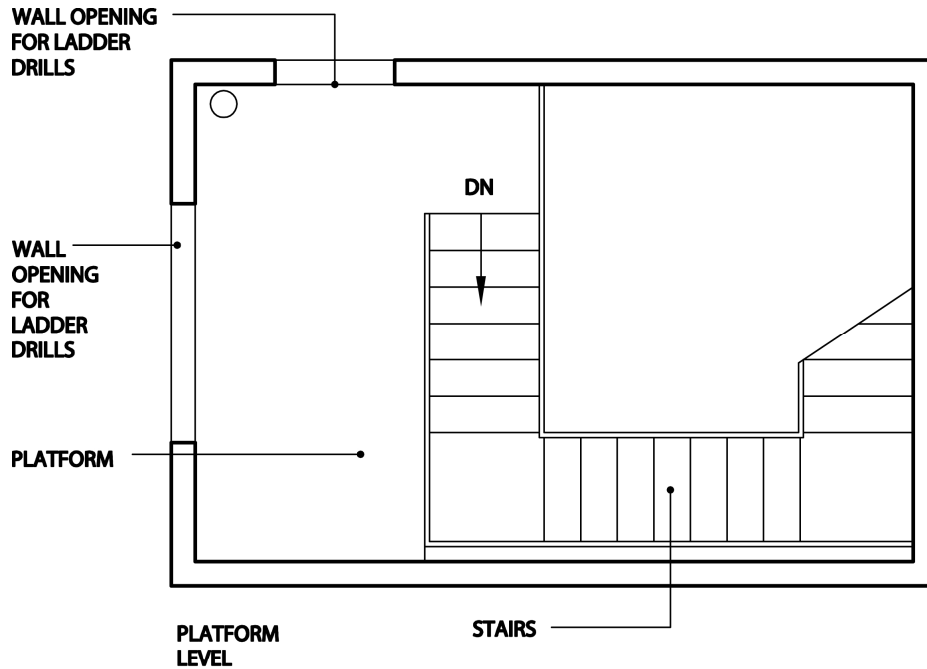
Lighting: See Chapter 5 Specification Section 26 50 00.

Power: GFI outlets.

Communications: House PA.

Equipment: Toilet accessories.  
See Chapter 5 Specifications Section 10 28 00.

Other: No requirements.





## Q. Drilling Platform

*Area:* 216 square feet per floor.

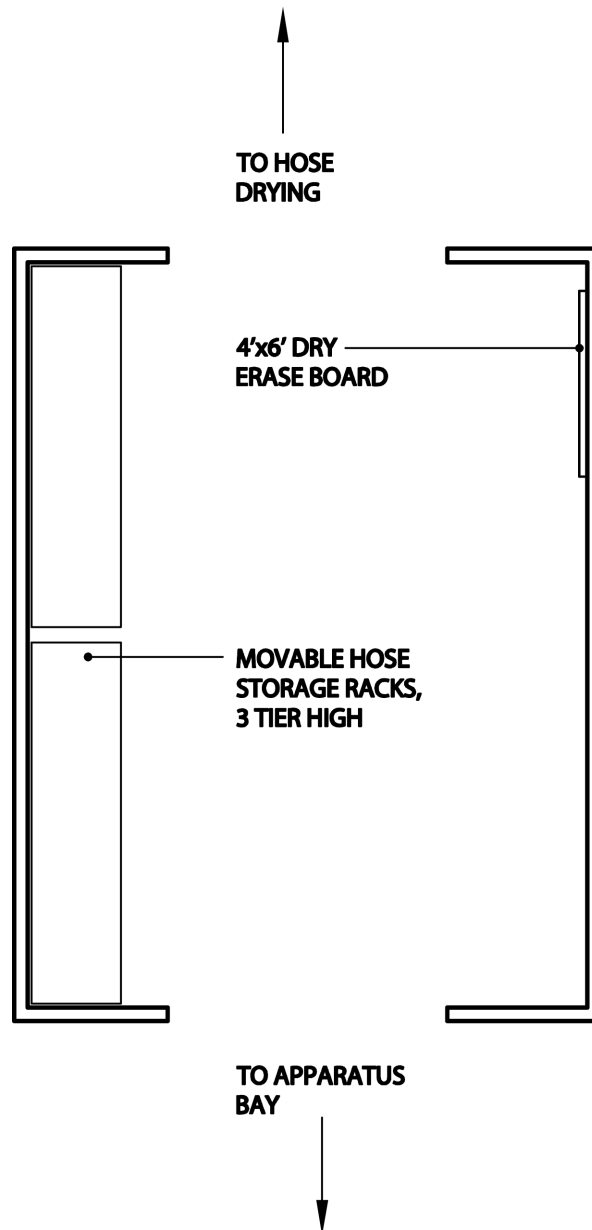
*Function:* Outdoor training tower at Battalion Stations.

*Adjacencies:* Location dependent on site conditions and building layout.

### *Design Issues:*

- |                 |  |
|-----------------|--|
| Security:       | Provide secure exterior access. Access to station interior not required.   |
| Furnishings:    | No requirements.   |
| Finishes:       | Non-slip walking surfaces.   |
| Doors:          | See Chapter 5 Specification Section 08 11 00.  |
| Plumbing:       | Dry standpipe with FDC and hose connections at landings for training use.<br><br>Provide conveniently located fire hydrant.<br><br>Floor drains.   |
| HVAC:           | None required. Natural ventilation only.   |
| Lighting:       | See Chapter 5 Specification Section 26 50 00.  |
| Power:          | No requirements.   |
| Communications: | No requirements.   |
| Equipment:      | Provide fall protection anchors per SFD detail. See appendix.  |
| Other:          | <ul style="list-style-type: none"><li>▪ Preferred training tower height: 5 stories, dependent upon local zoning requirements.</li><li>▪ Design handrails to same structural standard as fall protection anchors.</li></ul> |







## R. Hose Storage

*Area:* 192 square feet

*Function:* Storage for hose at Battalion Stations.

*Adjacencies:* Apparatus Bays and hose dryers.

### *Design Issues:*

Security: No requirements.

Furnishings: Hose storage racks

One 4'x6' dry erase board

Finishes: See Chapter 5 Specification Section 09 00 00, Type C.

Doors: No requirements.

Plumbing: Floor drains.

HVAC: See Chapter 5 Specification Section 23 00 00.

Lighting: See Chapter 5 Specification Section 26 50 00.

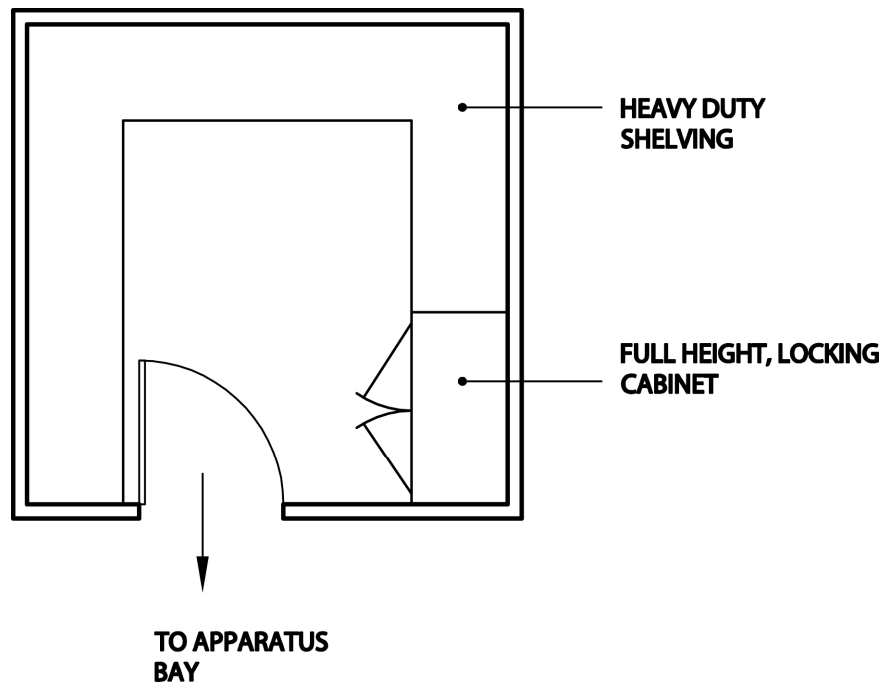
Power: No requirements.

Communications: No requirements.

Equipment: No requirements.

### Other:

- Built-in racks to store 2 complete complements of hose for emergency replacement. Confirm quantity of hose storage area with SFD.
- Verify with SFD whether or not a separate hose storage room is required.





## S. BC Storage

*Area:* 80 square feet

*Function:* Storage room for Battalion Chief's equipment.

*Adjacencies:* BC Bay.

### *Design Issues:*

Security: None required.

Furnishings: Cabinetry and shelving.

Finishes: See Chapter 5 Specification Section 09 00 00, Type C.

Doors: See Chapter 5 Specification Section 08 11 00.

Plumbing: None required.

HVAC: See Chapter 5 Specification Section 23 00 00.

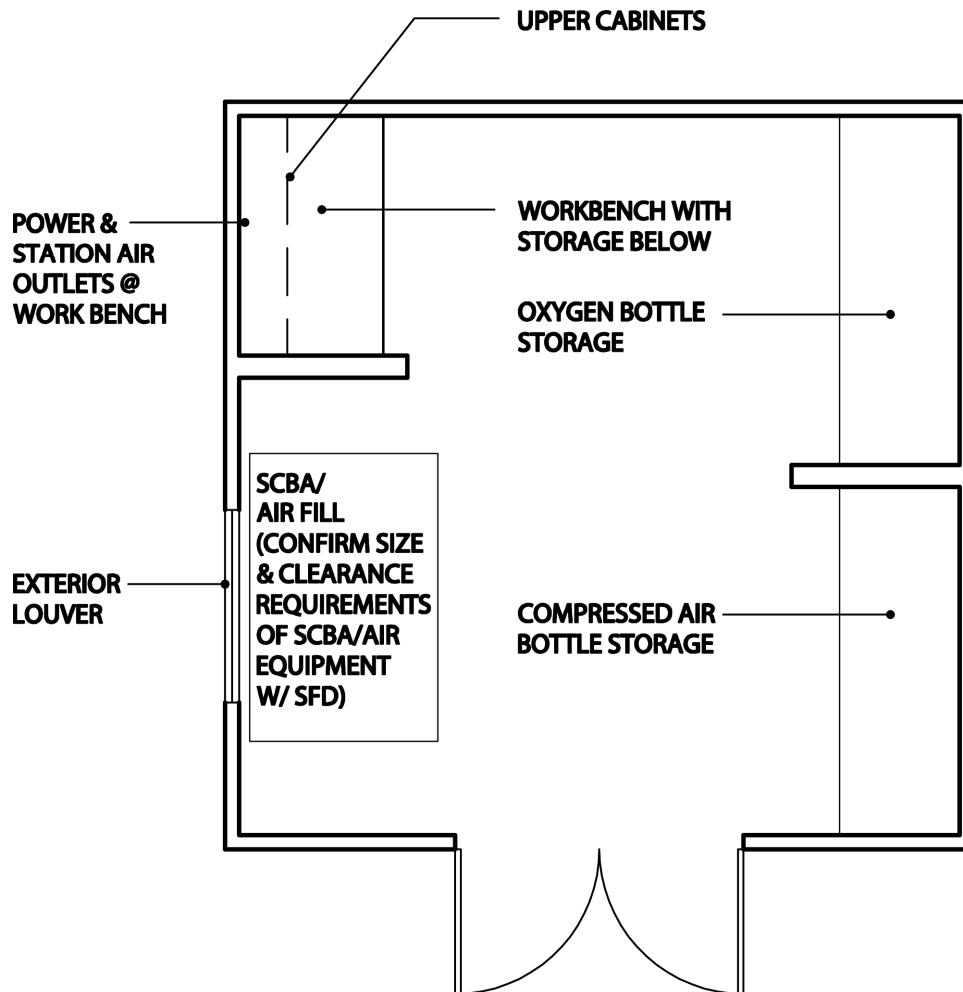
Lighting: See Chapter 5 Specification Section 26 50 00.

Power: No special requirements.

Communications: No requirements.

Equipment: No requirements.

Other:





## T. SCBA/Air Fill

*Area:* 240 square feet

*Function:* Breathing air compressor for refilling SCBA bottles, with storage area for incoming and outgoing bottles.

*Adjacencies:* Apparatus Bays.

### *Design Issues:*

Security: No requirements.

Furnishings: Storage racks for compressed air bottle storage.

Cabinetry to store bottle maintenance tools and supplies.

Maintenance work bench for performing SCBA maintenance and maintaining logs.

Finishes: See Chapter 5 Specification Section 09 00 00, Type C.

Doors: See Chapter 5 Specification Section 08 11 00.

Plumbing: No requirements.

HVAC: See Chapter 5 Specification Section 23 00 00.

Special consideration must be given to heat generated by the SCBA air compressor in this small room. Provide adequate means to dissipate heat generated.

Lighting: See Chapter 5 Specification Section 26 50 00.

Power: As required for SCBA compressor.

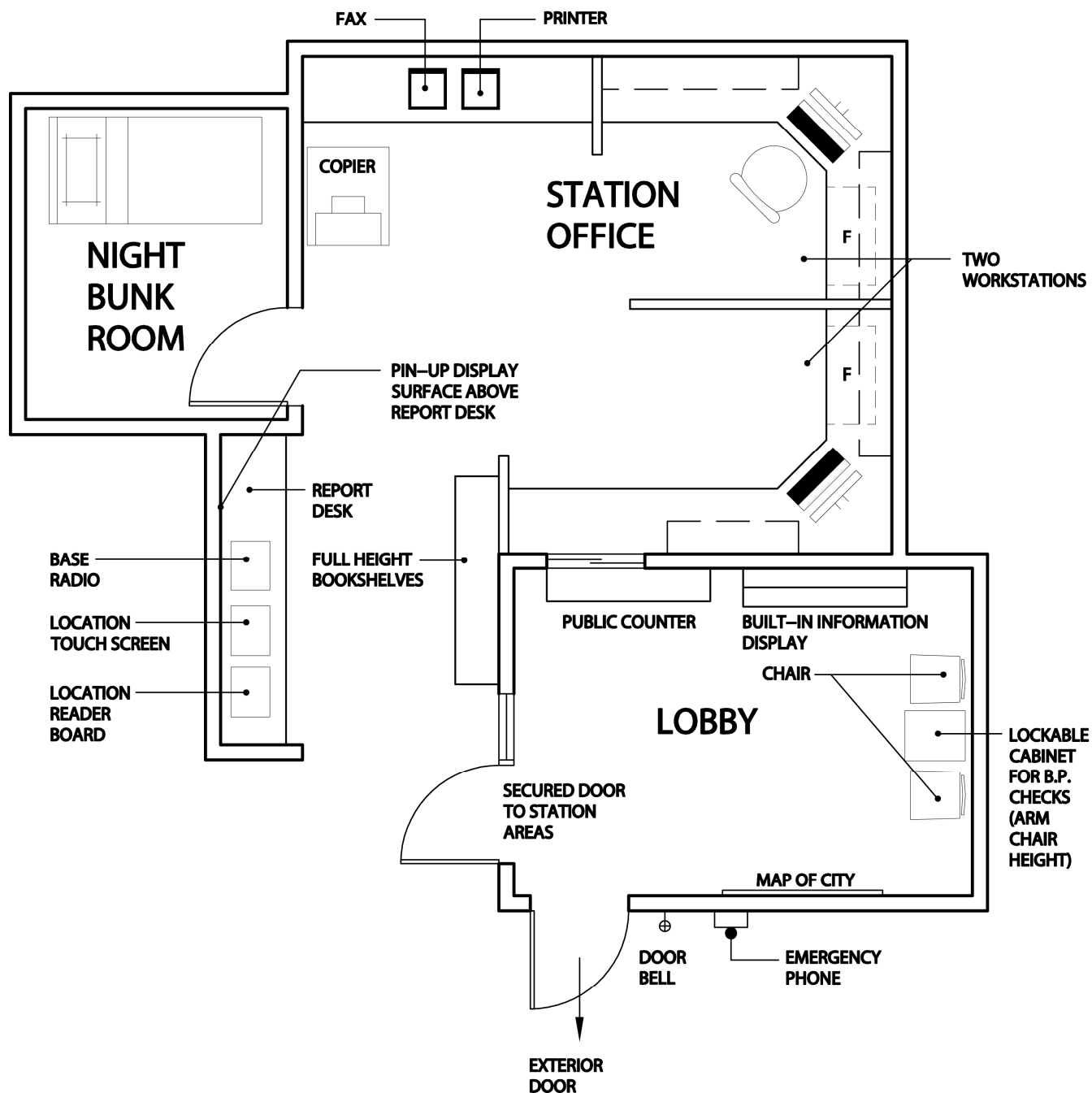
Power outlets at workbench

Communications: House PA.

Equipment: Compressor specifications to be verified with SFD and approved by FFD.

### Other:

- Sound attenuating wall construction needed as the compressor generates substantial noise.

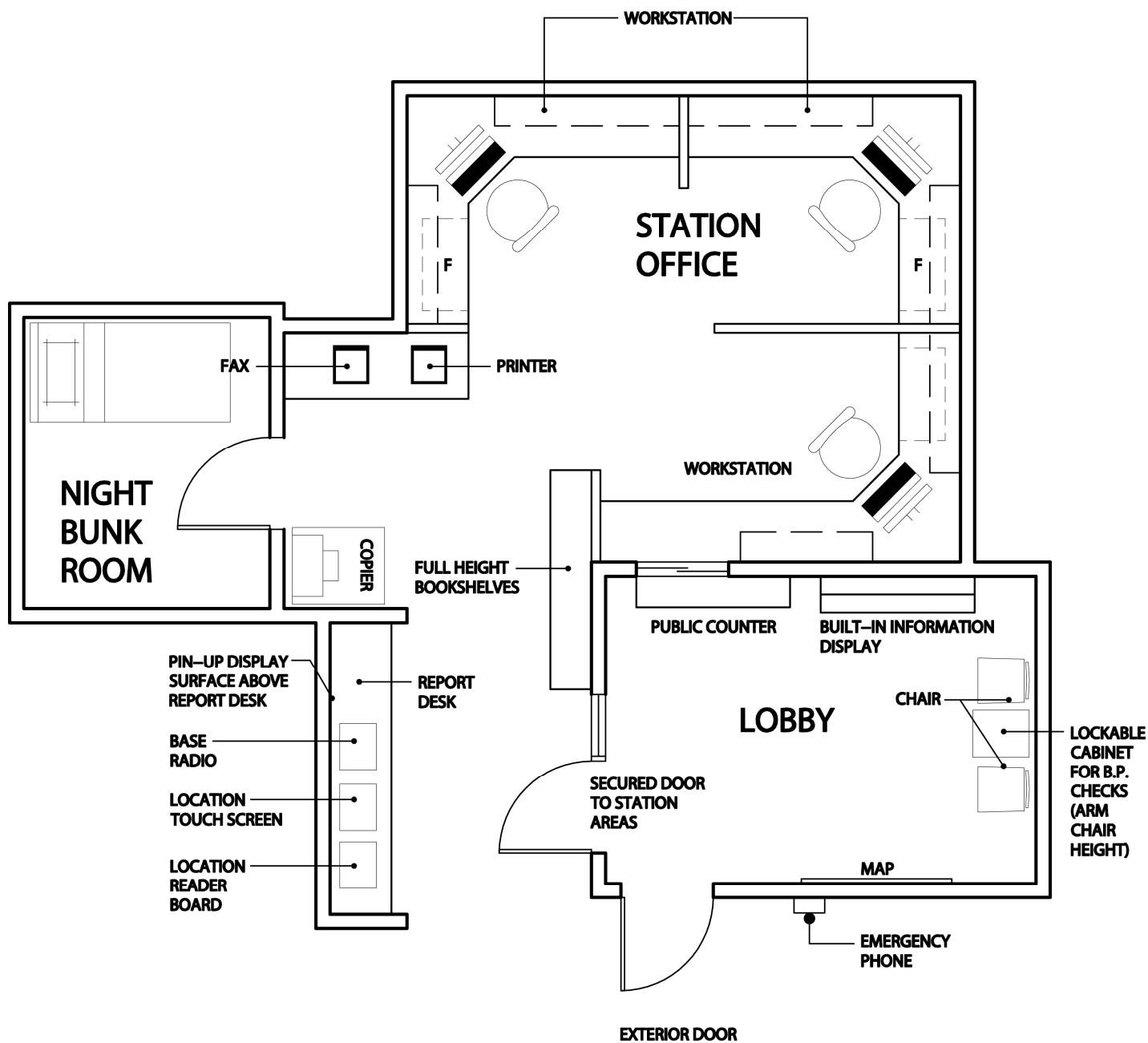


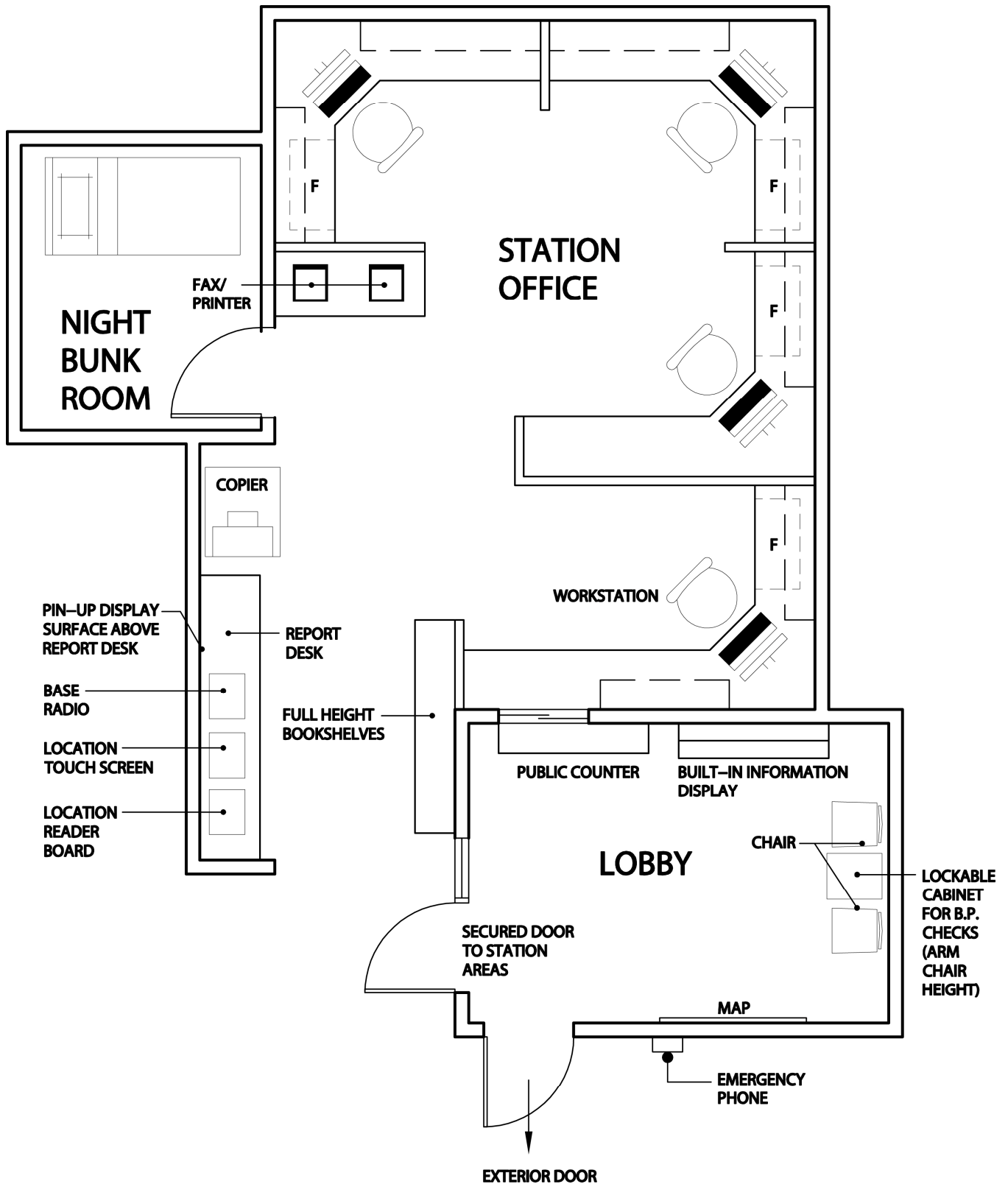


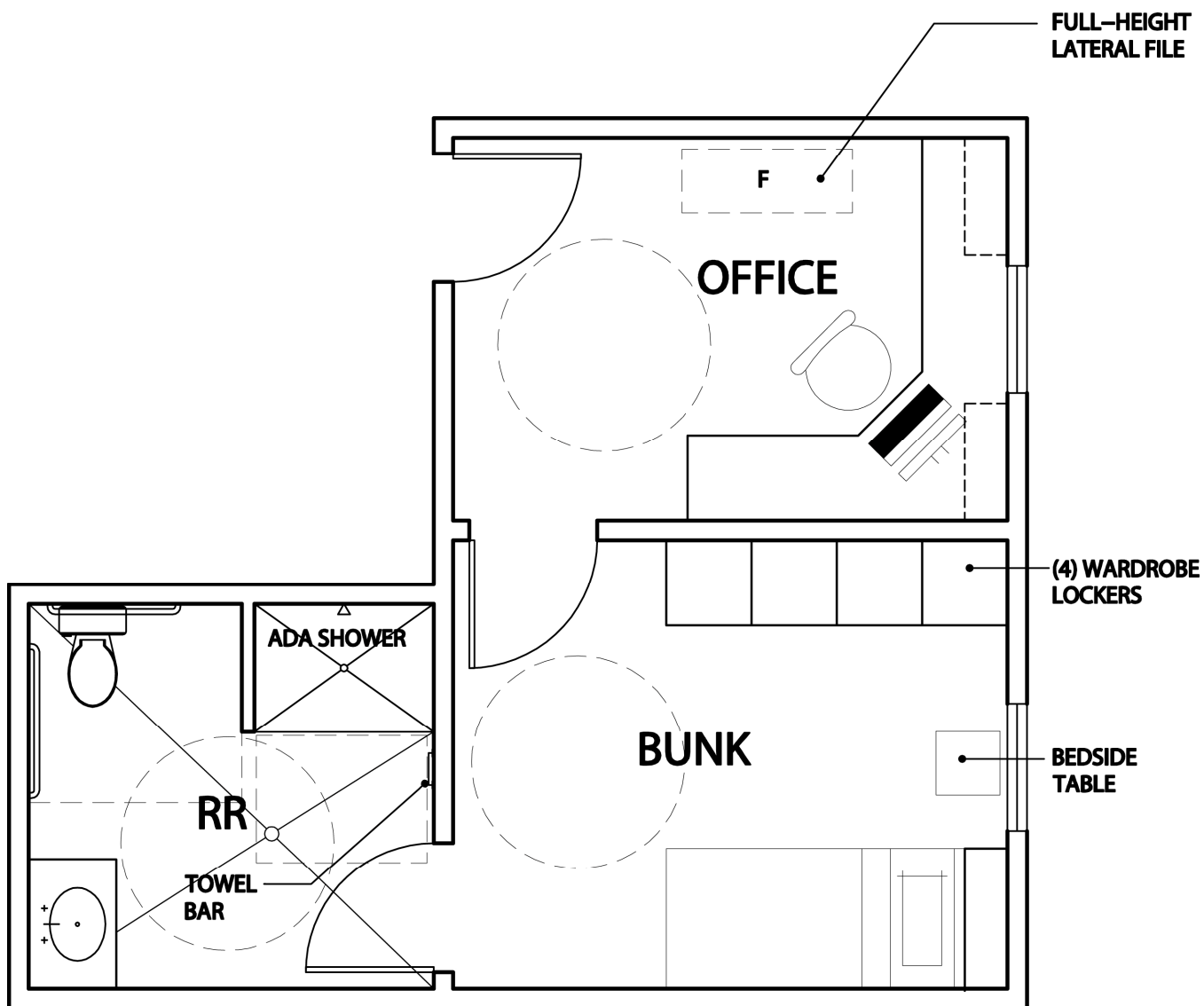
## U. Public Lobby / Night Bunk Room / Station Office

		N-I	N-II	N-III / BC
<i>Area:</i>	Public Lobby:	140 sq ft	140 sq ft	140 sq ft
	Night Bunk Room:	80 sq ft	80 sq ft	80 sq ft
	Station Office:	<u>270 sq ft</u>	<u>315 sq ft</u>	<u>414 sq ft</u>
	Total:	490 sq ft	535 sq ft	634 sq ft
<i>Function:</i>	Lobby: Reception for 1-2 visitors, space for performing blood pressure checks.			
	Station Office: Work area for station crews to handle paperwork, answer phones, greet visitors, and monitor lobby and station security. Also contains the reporting desk with printer which should be in flow to the Apparatus Bay.			
<i>Adjacencies:</i>	Lobby and station office immediately adjacent each other. Highly desirable to be adjacent Accessible Restroom, Officer's Quarters, and Apparatus Bays. Station Office must have visibility of apparatus.			
<i>Design Issues:</i>				
Security:	Provide a physical barrier, such as a sliding glass window, between lobby and station office. Provide card key reader at front door.			
Furnishings:	Lobby: 2 chairs, table, and cabinet for blood pressure equipment. Provide bulletin board space for public information displays and maps for providing directions to visitors.  Station Office: Workstation desks, file cabinets, and other furnishings as manufactured by Steelcase. Full height shelving and storage for books, public information items, and emergency medical supplies.			
Finishes:	See Chapter 5 Specification Section 09 00 00, Type B.			
Doors:	See Chapter 5 Specification Section 08 14 00. Lockable doors between lobby and all other station areas.			
Plumbing:	No requirements.			
HVAC:	See Chapter 5 Specification Section 23 00 00.			
Lighting:	See Chapter 5 Specification Section 26 50 00.			
Power:	As required by copiers, workstation computers, and communication devices. An equipment inventory for each station will be prepared by SFD, and approved by FFD.			
Communications:	Telephone, data, cable TV, dispatch printer, dispatch and base radios at Station Office. Door bell and "red-phone" at front door.			
Equipment:	Existing copiers, printers, computers and the like will reused whenever available. Confirm dimensions and power requirements of all reused equipment.			
Other:	<ul style="list-style-type: none"><li>▪ No public restrooms provided in Lobby.</li><li>▪ Considerable wall space required for street maps, inspection maps, response maps, communication boards, and the like. Tackboard and magnetic dry erase both desirable.</li><li>▪ Provide pegs for hanging clothes in Night Bunk Room.</li></ul>			











## V. Officer's Quarters

*Area:* 340 square feet.  
Office: 117 sq ft  
Bunk: 137 sq ft  
Restroom: 86 sq ft

*Function:* Office, restroom, and sleeping quarters for the officer.

*Adjacencies:* Station Office.

### *Design Issues:*

Security: No requirements.

Furnishings: Office: Desk/workstation for one person. Furnishings and file cabinets as manufactured by Steelcase.

Bunk: One bed; four 24" wide lockers, one per shift.

Finishes: See Chapter 5 Specification Section 09 00 00, Type B.

Doors: See Chapter 5 Specification Section 08 14 00.

Plumbing: Restroom: Toilet, sink with stopper, shower.

HVAC: See Chapter 5 Specification Section 23 00 00.

Lighting: See Chapter 5 Specification Section 26 50 00.  
Provide dimmable lights at bunk room.

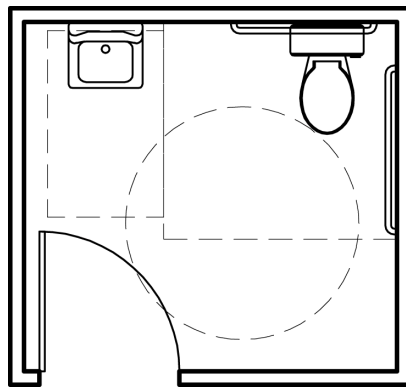
Power: No special requirements.

Communications: House PA, all rooms.  
Cable TV, located for wall-mount TV.  
Phone and data.

Equipment: No requirements.

### Other:

- Private office for daily operations and meetings.
- Single occupancy restroom.
- Wardrobe lockers to be deep enough for hanging clothes.





**W. Accessible Restroom - Unisex**

*Area:* 60 square feet

*Function:* Restroom for Station Office.

*Adjacencies:* Station Office.

*Design Issues:*

Security: Privacy lock.

Furnishings: No requirements.

Finishes: See Chapter 5 Specification Section 09 00 00, Type E.

Doors: See Chapter 5 Specification Section 08 14 00.

Plumbing: Sink and toilet (minimum 1 per floor that is ADA height). No urinals

HVAC: See Chapter 5 Specification Section 23 00 00.

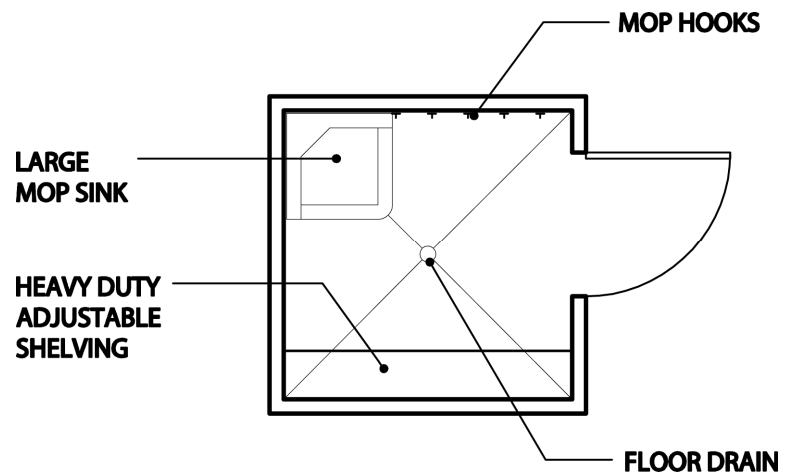
Lighting: See Chapter 5 Specification Section 26 50 00.

Power: GFI outlets.

Communications: House PA.

Equipment: No requirements.

Other:





## X. Janitor

*Area:* 36 square feet

*Function:* Storage area for cleaning supplies and equipment.

*Adjacencies:* Station administration areas.

### *Design Issues:*

Security: No requirements.

Furnishings: Heavy duty adjustable shelving.

Finishes: See Chapter 5 Specification Section 09 00 00, Type C.

Doors: See Chapter 5 Specification Section 08 14 00.

Plumbing: Mop sink, floor drain.

HVAC: See Chapter 5 Specification Section 23 00 00.

Lighting: See Chapter 5 Specification Section 26 50 00.

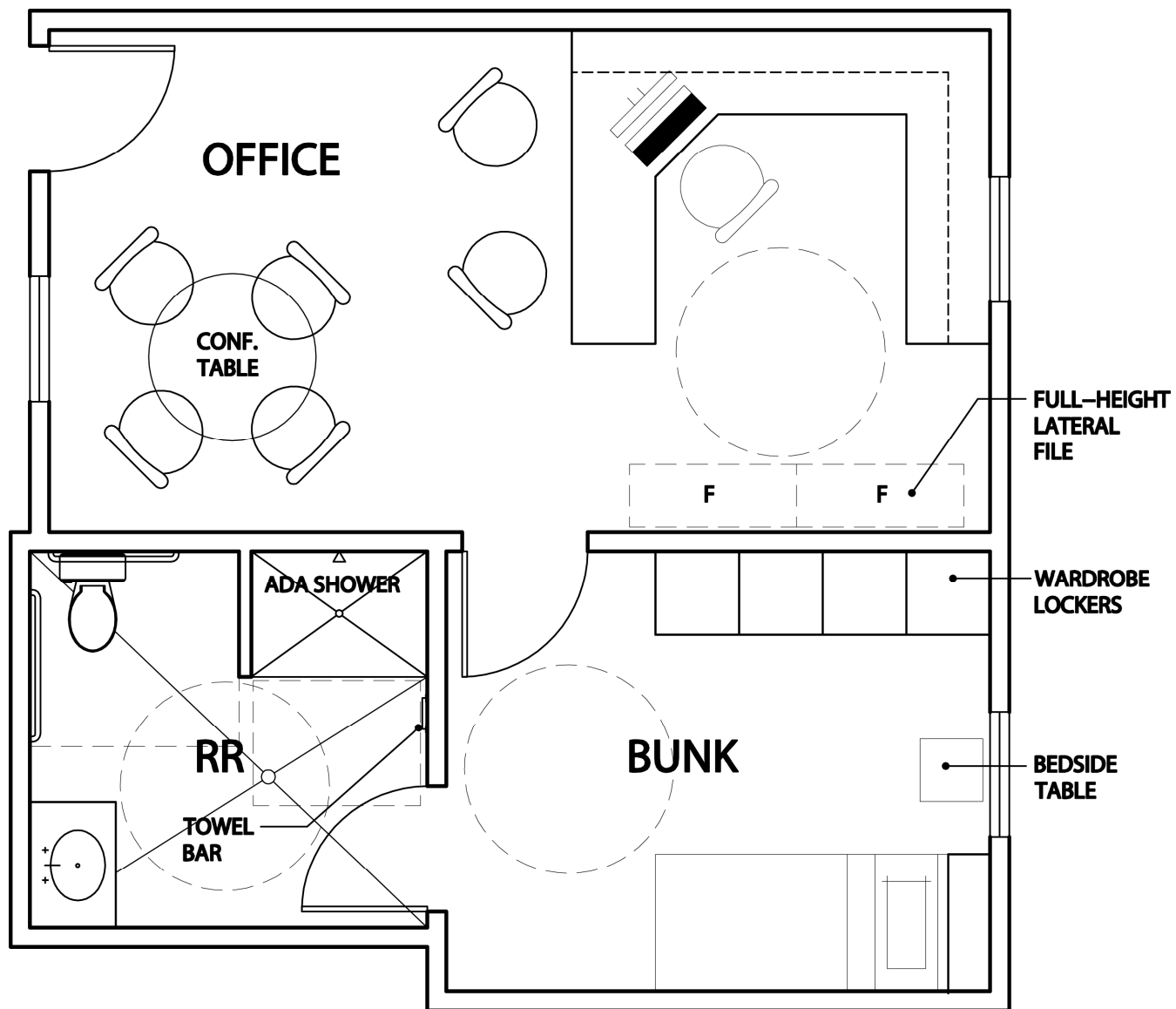
Power: No special requirements.

Communications: No requirements.

Equipment: Mop hooks.

Other:







## Y. BC Office and Quarters

*Area:* 493 square feet.

Office: 270 sq ft

Bunk: 137 sq ft

Restroom: 86 sq ft

*Function:* Office, restroom, and bunk room for Battalion Chief.

*Adjacencies:* Station administration areas. BC office and quarters location is flexible, though the preferred location is away from station crew areas.

### *Design Issues:*

Security: No requirements.

Furnishings: Office: Desk/workstation, file cabinets, conference table as manufactured by Steelcase.

Bunk: Bed, four 24" wide wardrobe lockers (one per shift), bedside table.

Finishes: See Chapter 5 Specification Section 09 00 00, Type B.

Doors: See Chapter 5 Specification Section 08 14 00.

Plumbing: Restroom: Toilet, sink with stopper, and shower (ADA types).

HVAC: See Chapter 5 Specification Section 23 00 00.

Lighting: See Chapter 5 Specification Section 26 50 00.  
Provide dimmable lights at bunk room.

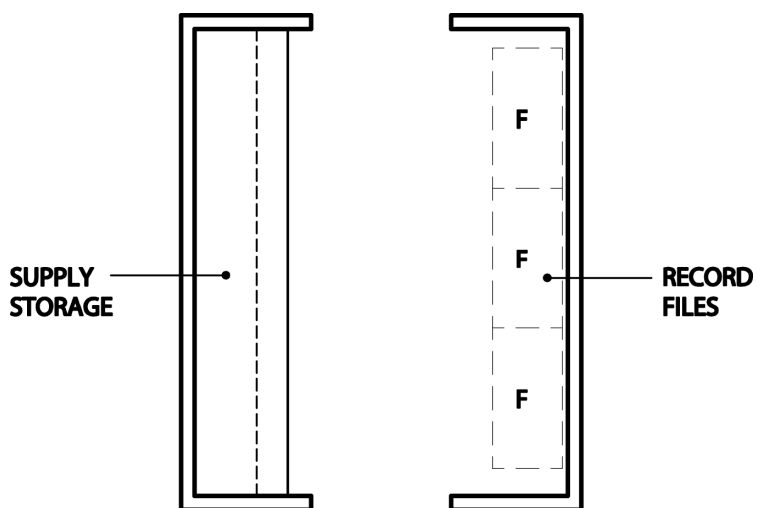
Power: No special requirements.

Communications: House PA, all rooms.  
Phone/ data.  
Cable for wall-mount TV.  
Base radio; satellite radio

Equipment: No requirements.

### *Other:*

- Conference table to seat four people.
- Private office for daily operations and meetings.
- Single occupancy accessible restroom.
- Wardrobe lockers to be deep enough for hanging clothes.





## Z. General Office Support Area

*Area:* 64 square feet

*Function:* Centralized equipment, records, and supplies storage. Work surfaces for viewing files and records.

*Adjacencies:* Station Office.

*Design Issues:*

Security: No requirements.

Furnishings: File cabinets as manufactured by Steelcase.

Finishes: See Chapter 5 Specification Section 09 00 00, Type B.

Doors: No requirements.

Plumbing: No requirements.

HVAC: See Chapter 5 Specification Section 23 00 00.

Lighting: See Chapter 5 Specification Section 26 50 00.

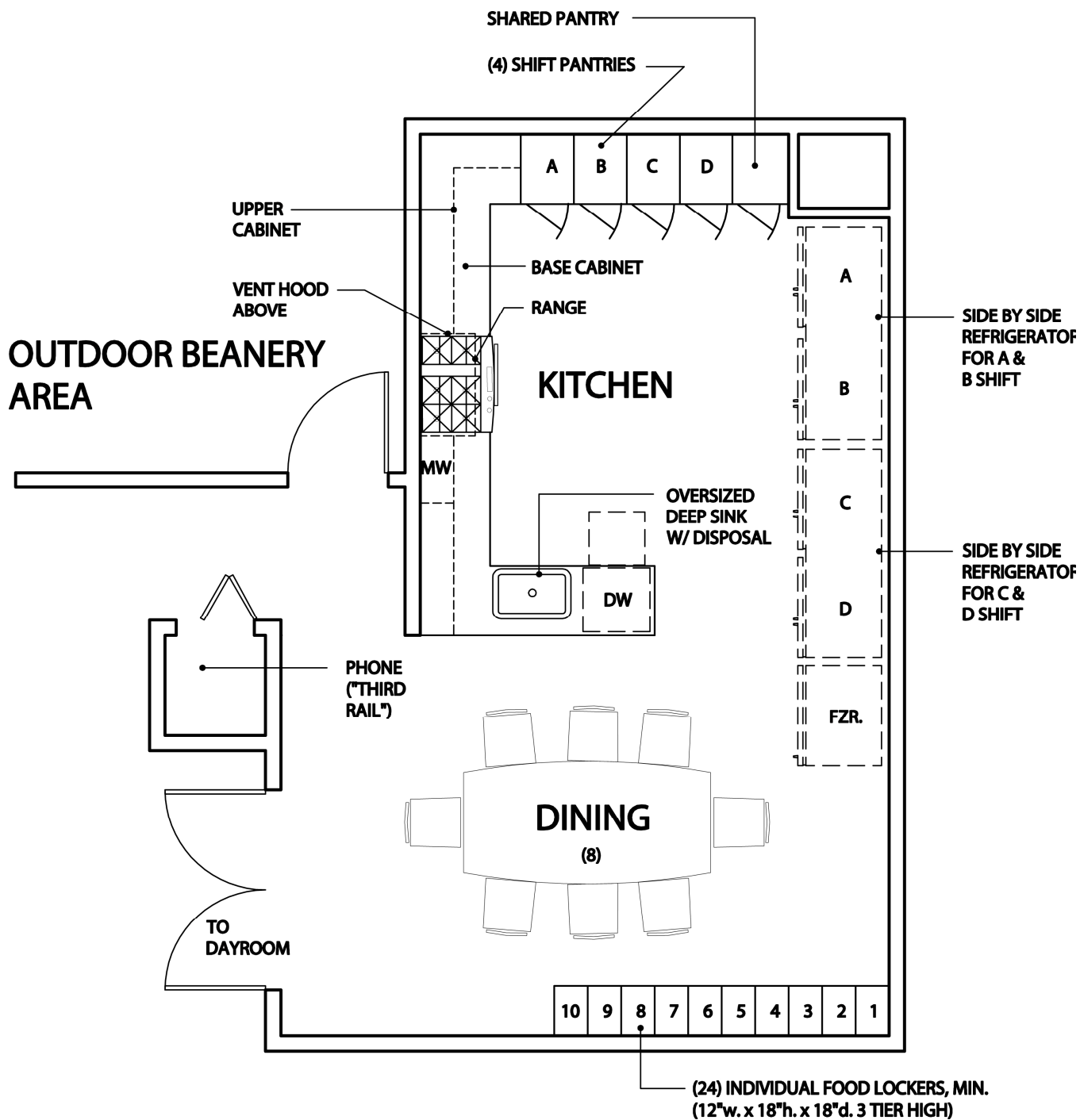
Power: No special requirements.

Communications: House PA.

Equipment: No requirements.

Other:

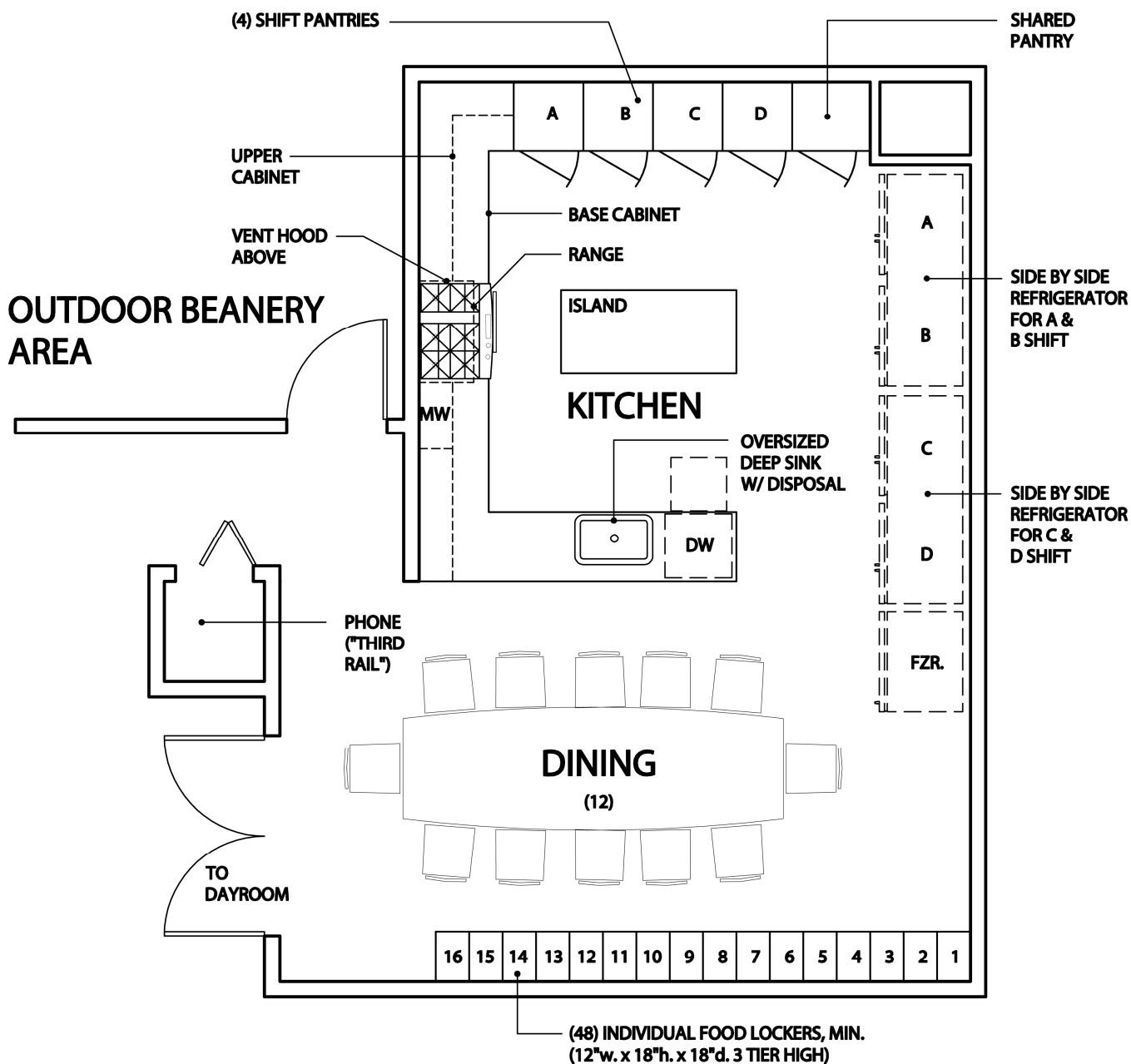
- Confirm storage capacity required for files and supplies with SFD.





## AA.Neighborhood Station I – Beanery (Kitchen and Dining)

<i>Area:</i>	Kitchen: 210 square feet Dining: 218 square feet
<i>Function:</i>	Kitchen and dining room for one-company station crew.
<i>Adjacencies:</i>	Dayroom and outdoor beanery areas. Proximity to Apparatus Bay and Bunk rooms would be desirable.
<i>Design Issues:</i>	
Security:	No requirements.
Furnishings:	Stainless steel countertops. No plastic laminate at beanery counters. Dining table with seating for 8 people. Dedicated pantries for each of the 4 shifts, plus 1 shared pantry. Wall or cabinet space for 10 gal garbage, plus recycling bins for commingle and glass.
Finishes:	See Chapter 5 Specification Section 09 00 00, Type B.
Doors:	See Chapter 5 Specification Section 08 14 00.
Plumbing:	(1) Sink minimum. Over-sized, deep compartment with drain board. If islands provided, include a smaller sink for food prep. Plumbing for coffee maker.
HVAC:	See Chapter 5 Specification Section 23 00 00. Type I hood not required. Provide high quality residential type, Vent-A-Hood, or equal.
Lighting:	See Chapter 5 Specification Section 26 50 00.
Power:	As required for all appliances.
Communications:	"Third rail": A phone booth-sized room for private conversations; can be located anywhere in the crew area of the station. Conduit for cable TV at height suitable for wall mounted TV. House PA.
Equipment:	(2) Refrigerators: Commercial grade, front sliding doors, 72" to 84" wide. (1) Freezer Dishwashers: Up to (2) sanitizers. Hobart or equal. Microwave oven. Garbage disposal with GFI protected switch adjacent sink. Ranges: High efficiency gas or gas/electric, high-end residential grade; 4 or 6 burners, with griddle.
Other:	<ul style="list-style-type: none"> <li>▪ Provide adequate food prep areas and circulation for meal times and cooking activities for entire station crew.</li> <li>▪ Provide individual food lockers for each assigned person, plus any support personnel. Verify quantities. Provide changeable name/# at each locker. <ul style="list-style-type: none"> <li>○ Neighborhood I: 24 lockers, minimum (Assigned personnel x 4)</li> </ul> </li> </ul>

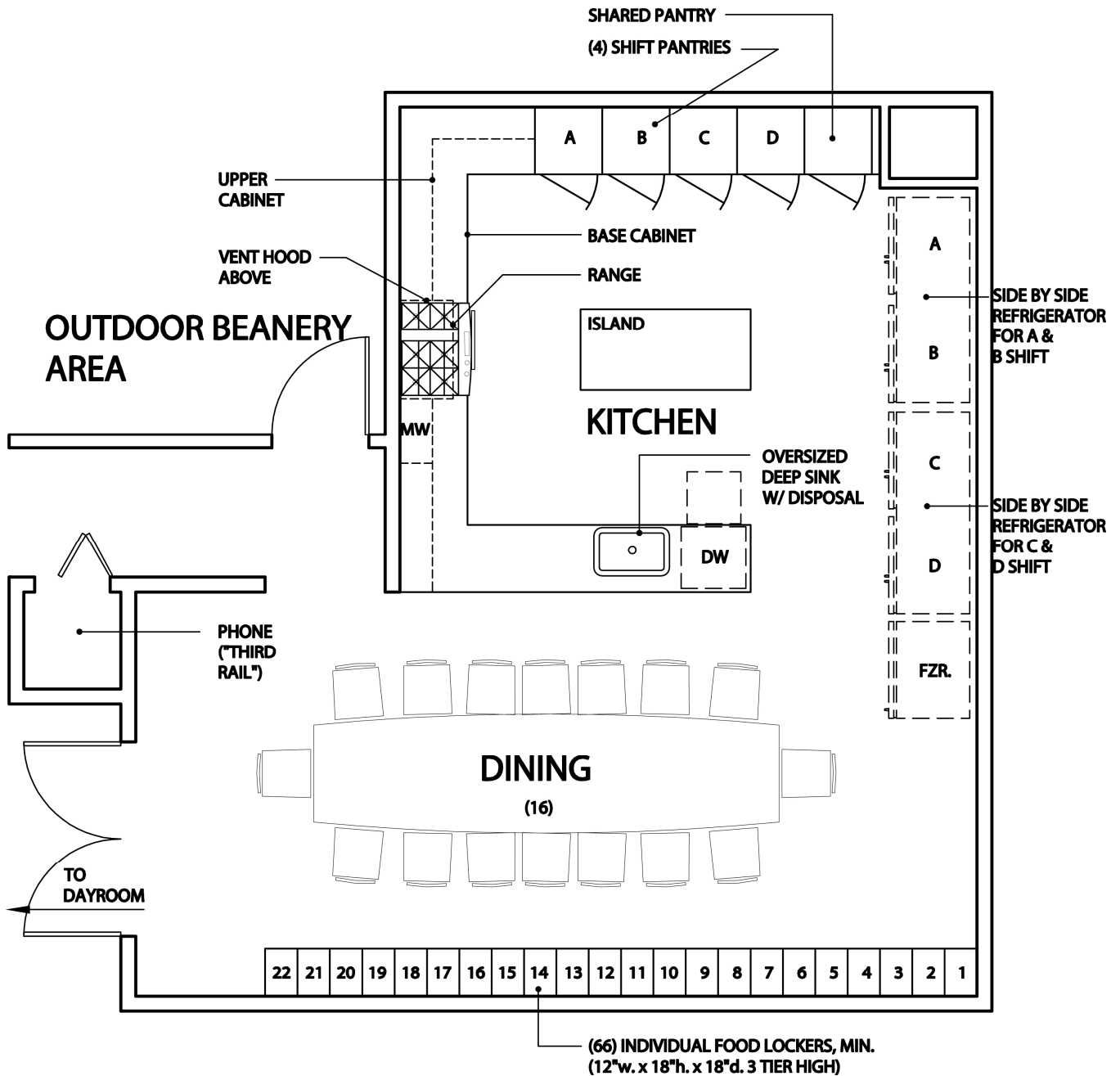




## BB. Neighborhood Station II – Beanery (Kitchen and Dining)

<i>Area:</i>	Kitchen: 248 square feet Dining: 248 square feet
<i>Function:</i>	Kitchen and dining room for station crews.
<i>Adjacencies:</i>	Dayroom and outdoor beanery areas. Proximity to Apparatus Bay and Bunk rooms would be desirable.
<i>Design Issues:</i>	
Security:	No requirements.
Furnishings:	Stainless steel countertops. No plastic laminate at beanery counters. Dining table with seating for 12 people. Dedicated pantries for each of the 4 shifts, plus 1 shared pantry. Wall or cabinet space for 10 gal garbage, plus recycling bins for commingle and glass.
Finishes:	See Chapter 5 Specification Section 09 00 00, Type B.
Doors:	See Chapter 5 Specification Section 08 14 00.
Plumbing:	(1) Sink minimum. Over-sized, deep compartment with drain board. If island provided, include a smaller sink for food prep. Plumbing for coffee maker.
HVAC:	See Chapter 5 Specification Section 23 00 00. Type I hood not required. Provide high quality residential type, Vent-A-Hood, or equal.
Lighting:	See Chapter 5 Specification Section 26 50 00.
Power:	As required for all appliances.
Communications:	"Third rail": A phone booth-sized room for private conversations; may be located anywhere in the crew area of the station. Conduit for cable TV at height suitable for wall mounted TV. House PA.
Equipment:	(2) Refrigerators: Commercial grade, front sliding doors, 72" to 84" wide. (1) Freezer. Dishwashers: Up to (2) sanitizers. Hobart or equal. Microwave oven. Garbage disposal with GFI protected switch adjacent sink. Ranges: High efficiency gas or gas/electric, high-end residential grade; 4 or 6 burners, with griddle.
Other:	<ul style="list-style-type: none"> <li>▪ Provide adequate food prep areas and circulation for meal times and cooking activities for entire station crew.</li> <li>▪ Provide individual food lockers for each assigned person plus any support personnel. Verify quantities. Provide changeable name/# at each locker. <ul style="list-style-type: none"> <li>○ Neighborhood II: 48 lockers, minimum. (Assigned personnel x 4)</li> </ul> </li> </ul>

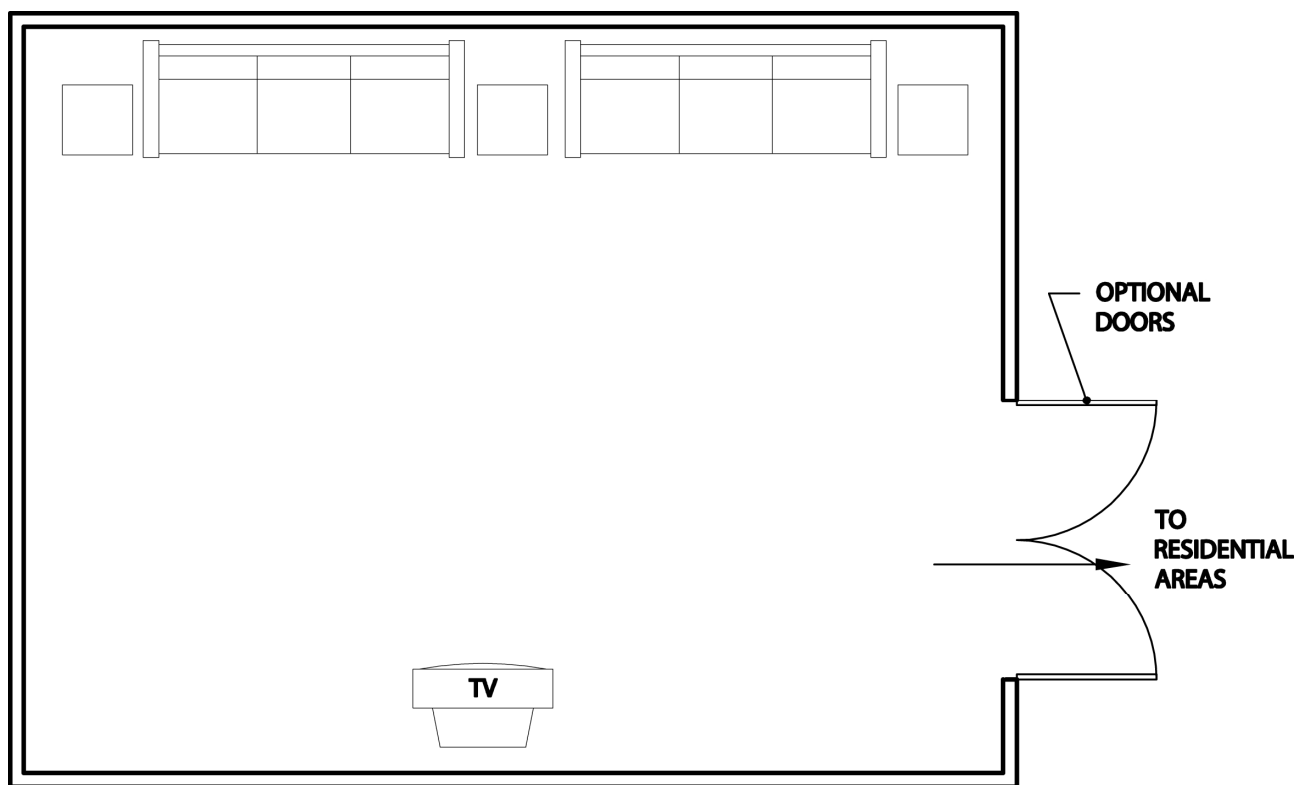






### CC. Neighborhood Station III/Battalion Station - Beanery (Kitchen and Dining)

<i>Area:</i>	Kitchen: 268 square feet Dining: 325 square feet
<i>Function:</i>	Kitchen and dining room for station crews.
<i>Adjacencies:</i>	Dayroom and outdoor beanery areas. Proximity to Apparatus Bay and Bunk rooms would be desirable.
<i>Design Issues:</i>	
Security:	No requirements.
Furnishings:	Stainless steel countertops. No plastic laminate at beanery counters. Dining table with seating for 16 people. Dedicated pantries for each of the 4 shifts, plus 1 shared pantry. Wall or cabinet space for 10 gal garbage, plus recycling bins for commingle and glass.
Finishes:	See Chapter 5 Specification Section 09 00 00, Type B.
Doors:	See Chapter 5 Specification Section 08 14 00.
Plumbing:	(1) sink minimum. Over-sized, deep compartment with drain board. If island provided, include a smaller sink for food prep. Plumbing for coffee maker.
HVAC:	See Chapter 5 Specification Section 23 00 00. Type I hood not required. Provide high quality residential type, Vent-A-Hood, or equal.
Lighting:	See Chapter 5 Specification Section 26 50 00.
Power:	As required for all appliances.
Communications:	"Third rail": A phone booth-sized room for private conversations; may be located anywhere in the crew area of the station. Comcast cable TV at height suitable for wall mounted TV. House PA.
Equipment:	(2) Refrigerators: Commercial grade, sliding front doors, 72" to 84" wide. (1) Freezer. Dishwashers: Up to (2) sanitizers. Hobart or equal. Microwave oven. Garbage disposal with GFI protected switch adjacent sink. Ranges: High efficiency gas or gas/electric, high-end residential grade; 4 or 6 burners, with griddle.
Other:	<ul style="list-style-type: none"> <li>▪ Provide adequate food prep areas and circulation for meal times and cooking activities for entire station crew.</li> <li>▪ Provide individual food lockers for each assigned person plus any support personnel. Verify quantities. Provide changeable name/# at each locker. <ul style="list-style-type: none"> <li>○ Neighborhood III and BC: 66 lockers, min. (Assigned personnel x 4)</li> </ul> </li> </ul>





## DD. Day Room

*Area:* Neighborhood Station I: 180 square feet.  
Neighborhood Station II: 266 square feet.  
Neighborhood Station III and Battalion Station: 360 sf.

*Function:* Crew recreation room.

*Adjacencies:* Adjacent to crew residential areas, though away from bunk rooms due to potential noise issues.

### *Design Issues:*

Security: No requirements.

Furnishings: All furnishings (chairs, La-Z-boys, pool tables, etc.) by station crew.

Finishes: See Chapter 5 Specification Section 09 00 00, Type B.

Doors: See Chapter 5 Specification Section 08 14 00.  
Optional, depending on location and layout. Verify with station crew.

Plumbing: None required.

HVAC: See Chapter 5 Specification Section 23 00 00.

Lighting: See Chapter 5 Specification Section 26 50 00.  
Provide dimmable lighting.

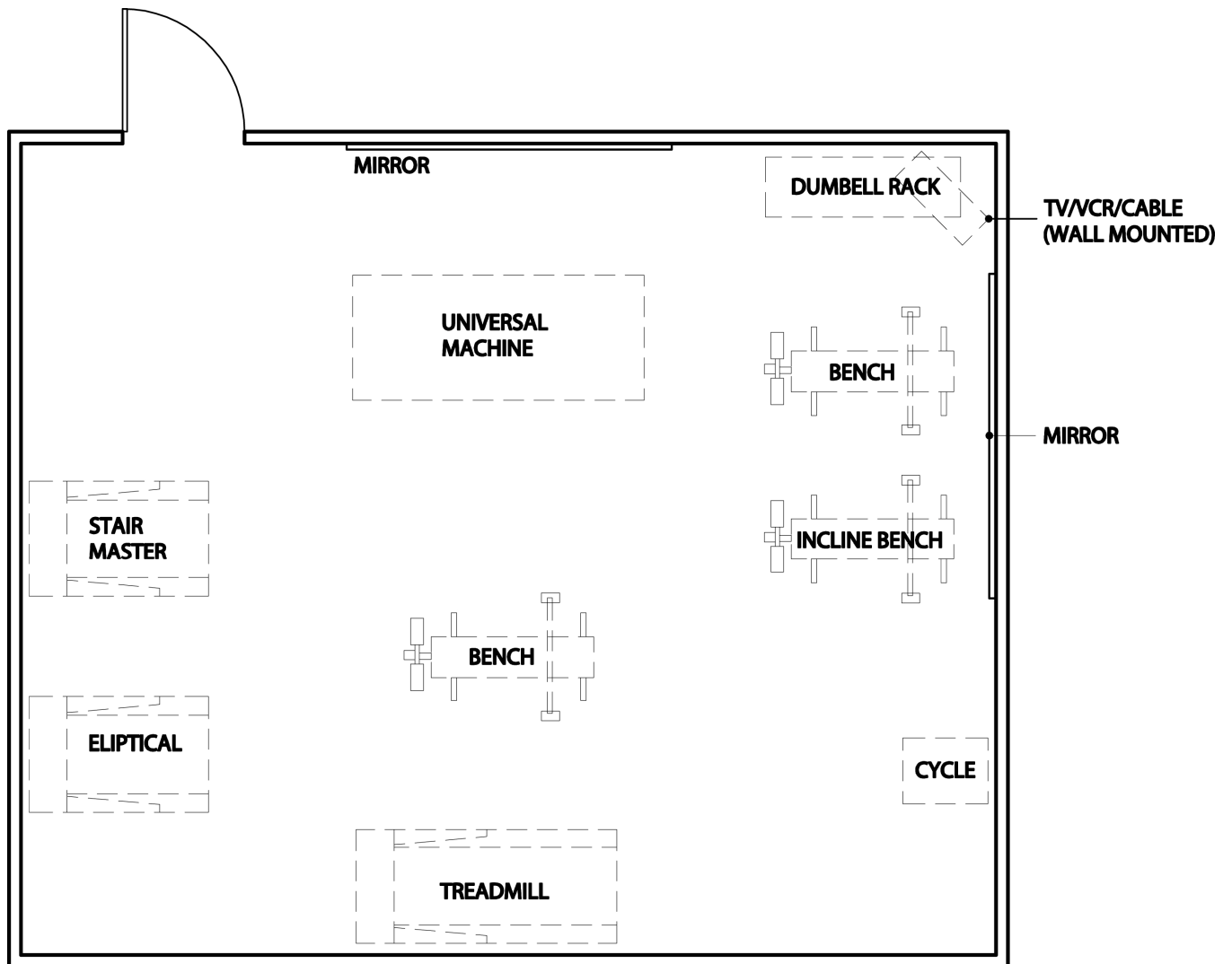
Power: Provide high and low power outlets as required by TV.

Communications: Phone and data.  
Provide high and low Comcast cable TV jacks. Verify TV type and mounting with each station crew.  
Computer printers not required.  
House PA

Equipment: No requirements.

### Other:

- The Day Room may or may not be separated from the Beanery. Verify preference with station crew.
- Windows: Determine whether dayroom windows are desired with each station.
- Sound insulate all dayroom walls.
- Risers may be provided for theater style seating; verify preference with station crew.





## EE. Physical Training

*Area:* 480 square feet

*Function:* Physical training room for weightlifting and cardio-vascular fitness activity.

*Adjacencies:* Location is flexible, based on site conditions and crew preferences. Exterior location preferred.

### *Design Issues:*

Security: No requirements.

Furnishings: Exercise equipment provided by SFD. Typical equipment includes (1) universal gym and 2-4 pieces of aerobic equipment.

Finishes: See Chapter 5 Specification Section 09 00 00, Type B, with recycled rubber mat flooring.

Doors: See Chapter 5 Specification Sections 08 14 00 and 08 11 00. Exterior doors and operable windows preferred for fresh air.

Plumbing: Drinking fountain (electric cooler).

HVAC: See Chapter 5 Specification Section 23 00 00.

Lighting: See Chapter 5 Specification Section 26 50 00.

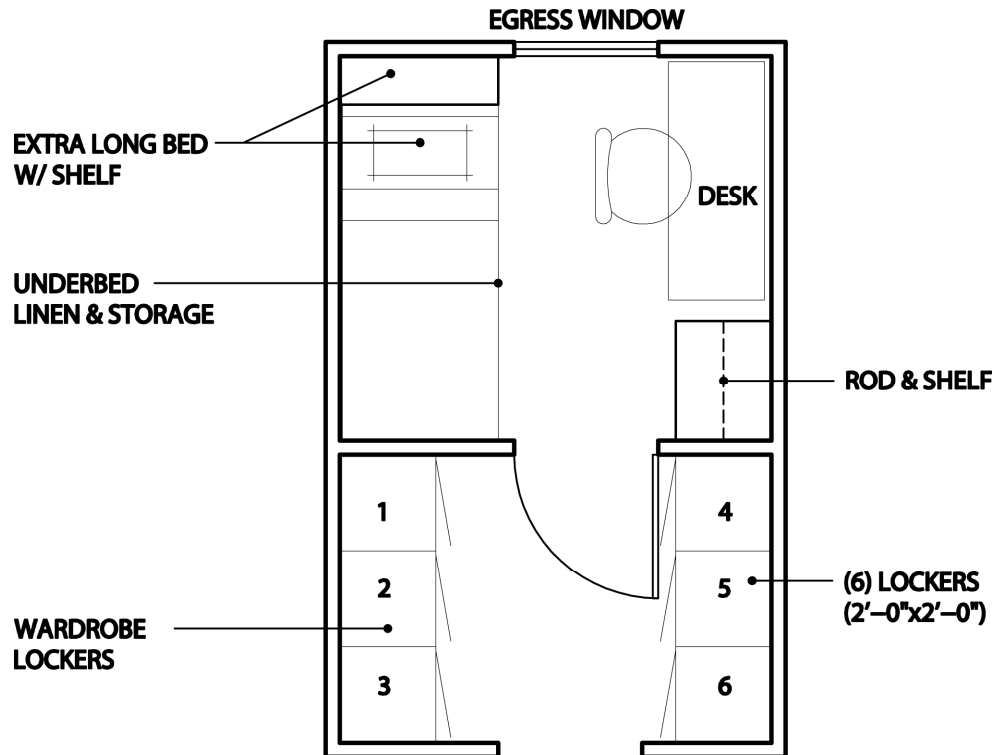
Power: Dedicated circuits for treadmills and other aerobic fitness machines. Verify requirements with equipment provided by SFD.

Communications: House PA.  
Cable TV.

Equipment: No requirements.

### Other:

- Crews perform physical training activities 4 people at a time.





## FF. Firefighter Bunk Room (Single) and Locker Room Alcove

*Area:* Bunk Room: 72 square feet  
Locker Alcove: 54 square feet

*Function:* Single occupancy sleeping facilities for firefighters and medics.

*Adjacencies:* Toilet/Shower Rooms. Direct and efficient access to Apparatus Bay.

### *Design Issues:*

Security: No requirements.

Furnishings: Sleep Room:  
Desk for study activities.  
Bed with linen storage under for SFD-provided wool blankets.

Locker Alcoves:  
(6) 24" wide, full height wardrobe lockers with vent holes, locks, and tackable pin-up surface on inside face of door. Provide adjustable shelves, hanging bar, and a 12"+ drawer for boots. Provide cubbies on top of lockers for personal sleeping bags, pillows, USAR and wildland go-bags. Soffit in any open spaces above wardrobe lockers to avoid catch-all surfaces.

Finishes: See Chapter 5 Specification Section 09 00 00, Type B.

Doors: See Chapter 5 Specification Section 08 14 00.  
Provided at bunk room; door must swing in direction of travel.  
No door required at alcove.

Plumbing: None required.

HVAC: See Chapter 5 Specification Section 23 00 00.

Lighting: Provide dimmable ceiling lights used in conjunction with alerting system.  
Provide reading light over bed.  
See Chapter 5 Specification Section 26 50 00.

Power: Provide outlets at desk and adjacent head of bed

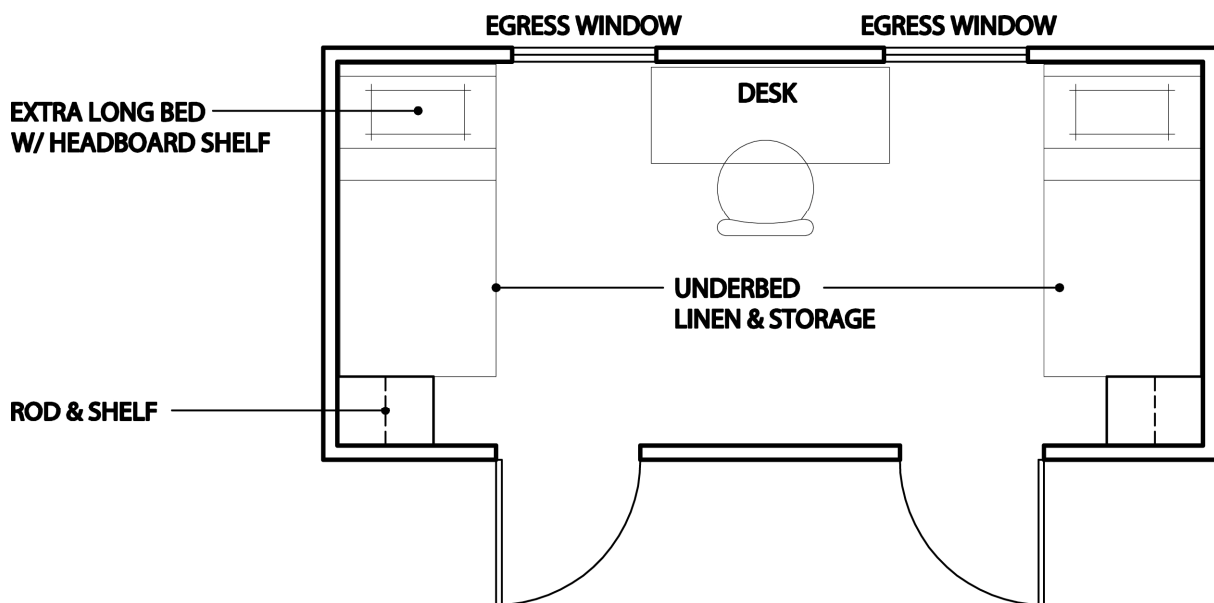
Communications: House PA.  
No cable TV.  
No phone or data connections.

Equipment: No requirements.

### Other:

- Provide towel bar and hanging space in sleep rooms for towel drying.
- Provide operable windows for ventilation and code egress.
- Room is sized for one occupant per shift.
- Provide acoustic insulation in walls between sleep rooms.
- Provide changeable name/# at each wardrobe locker.







### GG.Firefighter Bunk Room (Double)

*Area:* Sleep Room: 144 square feet

*Function:* Double occupancy sleeping facilities for medics (at Neighborhood I stations), and visitors and ride-alongs at Neighborhood II, III, and Battalion Stations.

*Adjacencies:* Toilet/Shower Rooms. Direct and efficient access to Apparatus Bay.

*Design Issues:*

Security: No requirements.

Furnishings: Sleep Room:  
Desk for study activities.  
Bed with linen storage under for SFD-provided wool blankets.

Locker Alcoves: Provide space outside of double bunk rooms for possible future wardrobe lockers, where possible; no lockers to be provided at this time

Finishes: See Chapter 5 Specification Section 09 00 00, Type B.

Doors: See Chapter 5 Specification Section 08 14 00.  
Provide (2) doors at bunk room; swing in direction of travel.

Plumbing: None required.

HVAC: See Chapter 5 Specification Section 23 00 00.

Lighting: Provide dimmable ceiling lights used in conjunction with alerting system.  
Provide reading light over bed.  
See Chapter 5 Specification Section 26 50 00.

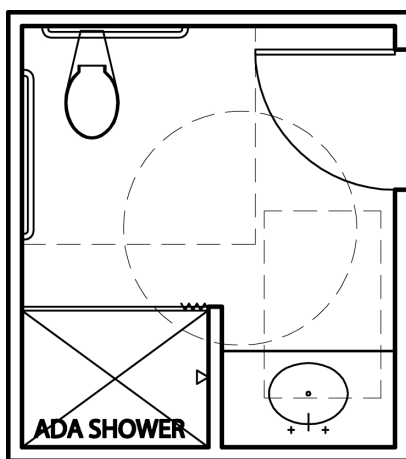
Power: Provide outlets at desks and at head of beds.

Communications: House PA.  
No cable TV  
No phone or data connections

Equipment: No requirements.

Other:

- Provide towel bar and hanging space in sleep rooms for towel drying.
- Provide operable windows for ventilation and egress.
- Room is sized for up to two occupants per shift.
- Provide acoustic insulation in walls between sleep rooms.





## HH.Toilet / Shower Room

*Area:* 81 square feet. Minimum of 1 per floor shall be fully ADA compliant. All shall be sized the same regardless of whether restroom is designed as ADA compliant or not.

*Function:* Firefighter toilet and bathing facilities.

*Adjacencies:* Bunk Rooms.

*Design Issues:*

Security: Privacy lock.

Furnishings: Counter and cabinet with drawers at sink.

Finishes: See Chapter 5 Specification Section 09 00 00, Type E.

Doors: See Chapter 5 Specification Section 08 14 00.

Plumbing: One-piece fiberglass molded shower with sliding, adjustable height shower head. Provide accessible unit at ADA compliant restroom.

Wall hung toilet with dual flush (no floor mounted toilets). No urinals allowed.

Sink with stopper.

Floor drain.

HVAC: Good exhaust required. Consider low and high speed exhaust settings tied to an occupancy sensor.  
See Chapter 5 Specification Section 23 00 00.

Lighting: See Chapter 5 Specification Section 26 50 00.

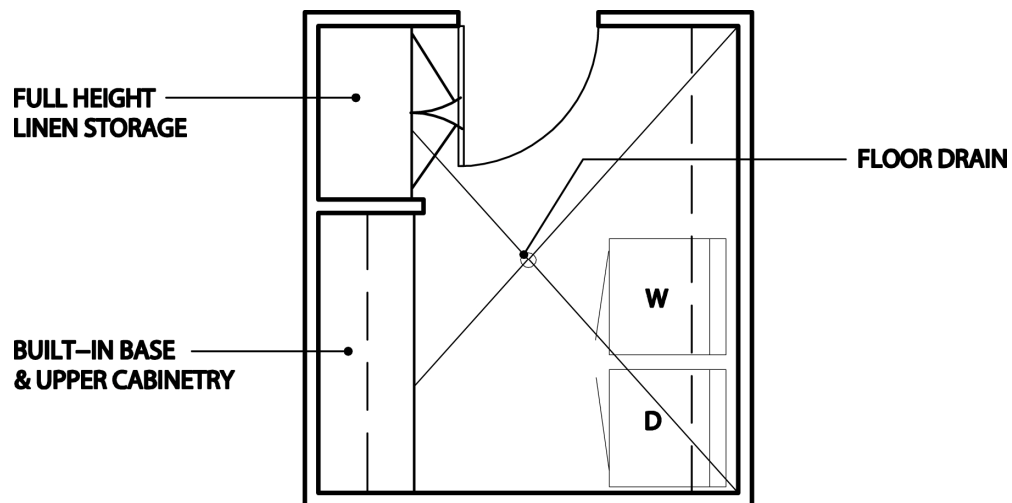
Power: GFI outlets at sink.

Communications: House PA.

Equipment: Toilet accessories: Grab bars (at ADA restroom), waste receptacle, paper towel dispenser (roll-type), robe hooks, towel bar

Other:

- Provide backing for grab bars, showers, etc. at all restrooms for future ADA adaptability.





## II. Laundry / Utility Room

*Area:* 90 square feet

*Function:* Washer and dryer for washing house linens and uniforms. Storage for clean linens, cleaning supplies, and equipment.

*Adjacencies:* Bunk rooms, Beanery.

### *Design Issues:*

Security: No requirements.

Furnishings: Hamper for soiled dish towels.

Cabinets and countertops for clothes folding and storage of detergent and softener.

Finishes: See Chapter 5 Specification Section 09 00 00, Type B.

Doors: See Chapter 5 Specification Section 08 14 00.

Plumbing: Plumbing as required for washer.

Gas service as required by dryer.

No mop sinks or laundry sinks required.

HVAC: See Chapter 5 Specification Section 23 00 00.

Lighting: See Chapter 5 Specification Section 26 50 00.

Power: As required by appliances. At dryers, provide for both gas and electric options.

Communications: House PA.

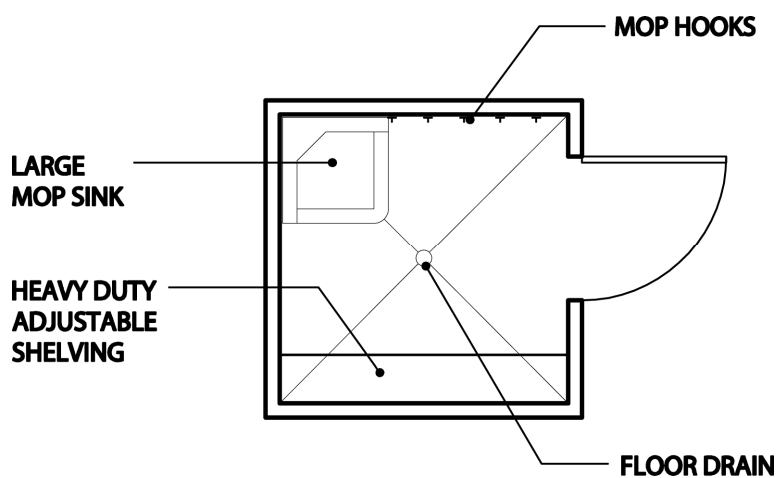
Equipment: Clothes washer: High-end residential grade; front loading.  
Clothes dryer: High-end residential gas or electric type; front loading.

Manufacturer: Whirlpool or approved equal.

Fold-down ironing cabinet with iron and full size ironing board.

### Other:

- This room is not required to be ADA accessible.
- Locate Laundry Room where dryer exhaust duct can be routed short and efficient to the exterior.





## JJ. Janitor at Second Floor

*Area:* 36 square feet

*Function:* Storage area for cleaning supplies and equipment.

*Adjacencies:* Station residential areas.

### *Design Issues:*

Security: None required.

Furnishings: Heavy duty adjustable shelving.

Finishes: See Chapter 5 Specification Section 09 00 00, Type C.

Doors: See Chapter 5 Specification Section 08 14 00.

Plumbing: Mop sink, floor drain.

HVAC: See Chapter 5 Specification Section 23 00 00.

Lighting: See Chapter 5 Specification Section 26 50 00.

Power: No special requirements.

Communications: None required.

Equipment: Mop hooks.

Other: No requirements.





This page is intentionally blank.



## KK. Electrical Room

*Area:* Neighborhood I and II Stations: 80 square feet.  
Neighborhood III and Battalion Stations: 100 square feet.

*Function:* Station electrical equipment, main distribution center, automatic transfer switches, and other electrical infrastructure.

*Adjacencies:* Place as required for an efficient and logical station layout.

### *Design Issues:*

Security: None required.

Furnishings: None required.

Finishes: See Chapter 5 Specification Section 09 00 00, Type D.

Doors: See Chapter 5 Specification Section 08 14 00.

Plumbing: None required.

HVAC: See Chapter 5 Specification Section 23 00 00.

Lighting: See Chapter 5 Specification Section 26 50 00.

Power: Equipment and panel clearances per electrical code requirements.

Communications: None required.

Equipment: None required.

Other:



This page is intentionally blank.



## LL. Communication Room

*Area:* 64 square feet

*Function:* Centralized location for information technology and communications equipment and MDF (Main Distribution Frame).

*Adjacencies:* Place as required for an efficient and logical station layout and efficient routing of cabling and utility access.

### *Design Issues:*

Security: Card key reader with mechanical key override.

Furnishings: Racks, cable trays, and card reader provisions per DoIT requirements and as approved by FFD.

Finishes: See Chapter 5 Specification Section 09 00 00, Type D.

Walls: All walls will be lined with 4x8 ACX Douglas fir plywood with A side out. The height should be at least 8.5" A.F.F to the finished ceiling. Backboards shall have two coats fire retardant white, satin finish (washable) paint.

Ceiling: Suspended ACT.

Doors: See Chapter 5 Specification Section 08 14 00.  
Lockable per Security section above.

Plumbing: Route plumbing and waste lines so they do not pass through room, either above or below ceiling.

HVAC: Provide good air conditioning and cooling. Route building HVAC lines and other systems around this room, not through it.  
See Chapter 5 Specification Section 23 00 00.

Lighting: Adequate and uniform within room.  
See also Chapter 5 Specification Section 26 50 00.

Power: Power and conduit per DoIT requirements.

Communications: Conduit, equipment, and J-boxes per DoIT requirements.

Equipment: Other equipment as determined and required by DoIT.

Other:

- Room is accessed by DoIT and Security only.
- See also DoIT Telecommunication Standards in the Appendix.



This page is intentionally blank.



**MM. Mechanical Room**

*Area:* Neighborhood I and II Stations: 150 square feet.  
Neighborhood III and Battalion Stations: 200 square feet.

*Function:* Centralized location for HVAC, plumbing, and controls equipment.

*Adjacencies:* As required for an efficient station and equipment layout. Provide good accessibility for maintenance access and equipment replacement.

*Design Issues:*

Security: None required.

Furnishings: None required.

Finishes: See Chapter 5 Specification Section 09 00 00, Type D.

Doors: See Chapter 5 Specification Section 08 14 00.

Plumbing: As required for equipment housed in room.

HVAC: As required by code for equipment housed in room.

Lighting: Provide good lighting for maintenance work.  
See also Chapter 5 Specification Section 26 50 00.

Power: Provide power as required for equipment and for service and maintenance operations.

Communications: None required.

Equipment: None required.

Other: Acoustically separate Mechanical Room from other occupied areas of the station.



This page is intentionally blank.



## NN.General Storage

*Area:* Neighborhood I Stations: 100 square feet.  
Neighborhood II Stations: 130 square feet.  
Neighborhood III and Battalion Stations: 150 square feet.

*Function:* General storage for miscellaneous station needs.

*Adjacencies:* As required for efficient and functional station layout.

### *Design Issues:*

Security: None required.

Furnishings: None required.

Finishes: See Chapter 5 Specification Section 09 00 00, Type D.

Doors: See Chapter 5 Specification Section 08 14 00.

Plumbing: None required.

HVAC: See Chapter 5 Specification Section 23 00 00.

Lighting: See Chapter 5 Specification Section 26 50 00.

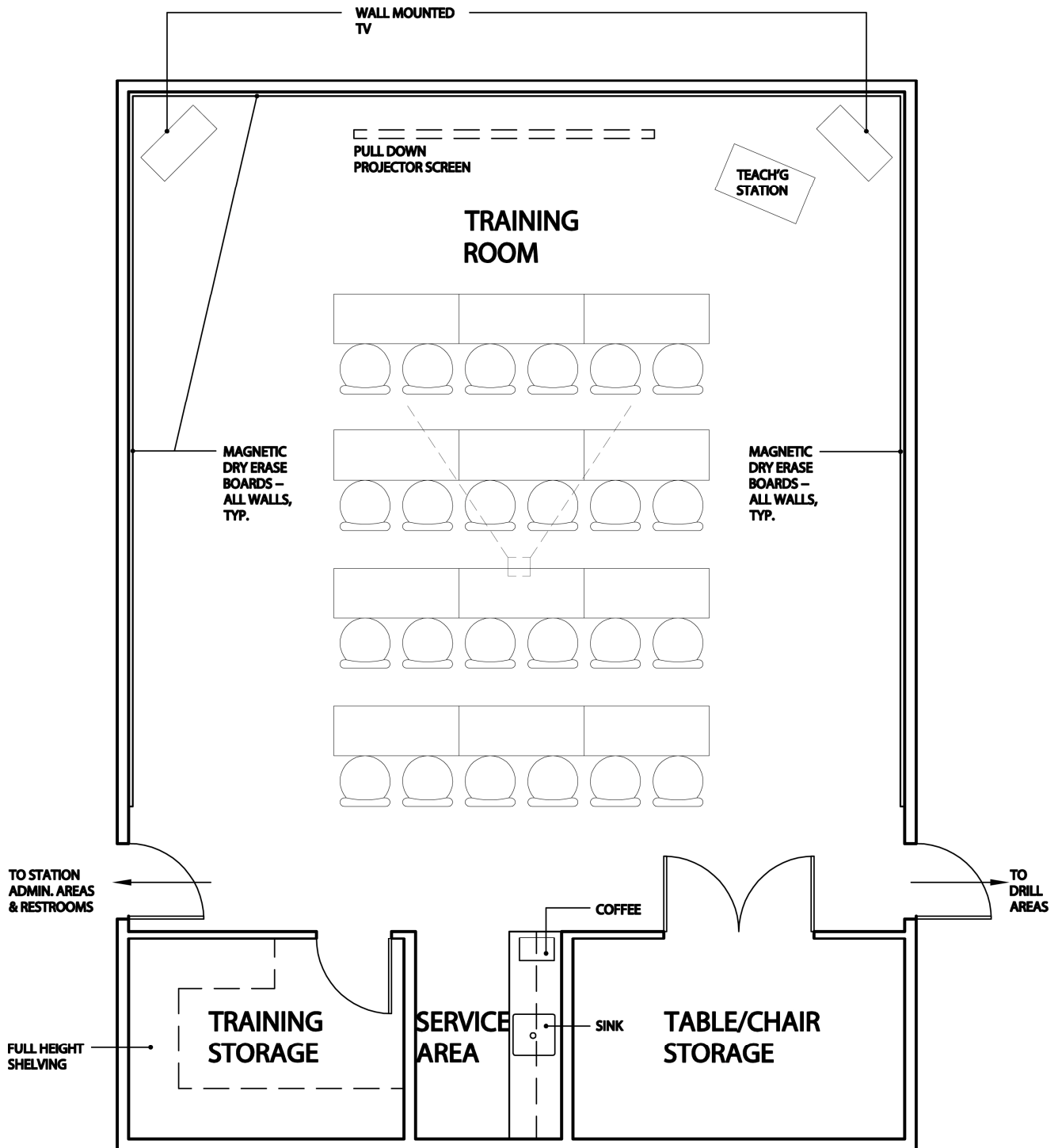
Power: No special requirements.

Communications: None required.

Equipment: None required.

Other:







## OO. Training Room

*Area:* Training Room: 1,038 square feet.  
Table/chair Storage: 104 square feet.  
Training Storage: 88 square feet.  
Service Area: 48 square feet.

*Function:* Classroom for lectures, training, and audio visual presentations.  
Storage for training equipment and props.

*Adjacencies:* Station administration areas and restrooms. Also desirable to have an exterior access to drill courts.

### *Design Issues:*

Security: None required.

Furnishings: Chairs and tables.

Window blinds at all windows for light control.

Finishes: See Chapter 5 Specification Section 09 00 00, Type B.

Doors: See Chapter 5 Specification Section 08 14 00.

Plumbing: Plumbed connection for coffee machine.

HVAC: See Chapter 5 Specification Section 23 00 00.

Lighting: Provide dimmable lights in multiple zones for flexible light control.  
See Chapter 5 Specification Section 26 50 00.

Power: As required for projection equipment and monitors. Floor outlets at teaching station.

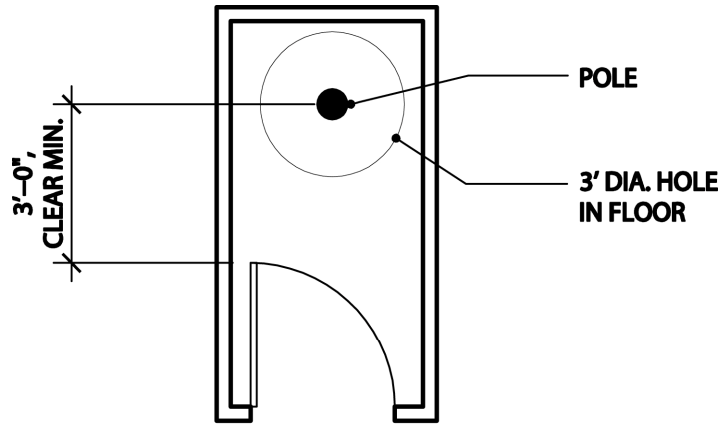
Communications: House PA  
Data and phone.  
Wall mounted TV/VCR's  
Provide infrastructure for LCD TV's and monitors.

Equipment: Ceiling mounted InFocus projection system. (Provide mounting system only.)

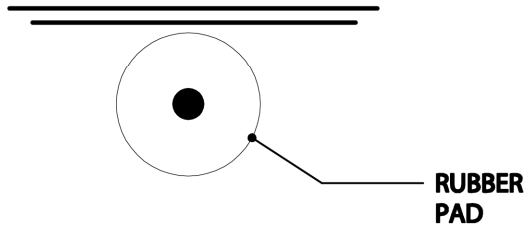
Projection screens, tack boards, and dry erase boards on all walls.

### *Other:*

- Room is sized to accommodate 24 people, approximately 5-6 companies. No public use anticipated.
- Provide room and A/V controls for a podium/teaching station.
- Windows not required in the training room, but are desirable.



UPPER FLOOR



LOWER FLOOR



## PP. Fire Pole

*Area:* 32 square feet per floor.

*Function:* Fire pole and associated secure room.

*Adjacencies:* As required for efficient station layout and access to apparatus bays.

### *Design Issues:*

Security: As indicated in Department of L&I Fire Pole Settlement Agreement.

Furnishings: None.

Finishes: See Chapter 5 Specification Section 09 00 00, Type B.

Doors: See Chapter 5 Specification Section 08 14 00 and Department of L&I Fire Pole Settlement Agreement.

Plumbing: No requirements.

HVAC: See Chapter 5 Specification Section 23 00 00.

Lighting: See Chapter 5 Specification Section 26 50 00 and Department of L&I Fire Pole Settlement Agreement.

Power: See Department of L&I Fire Pole Settlement Agreement.

Communications: See Department of L&I Fire Pole Settlement Agreement for door interlock requirements.

Equipment: No requirements.

### Other:

- See Department of L&I Fire Pole Settlement Agreement in Appendix for specific requirements for fire pole installations and safety provisions..



This page is intentionally blank.



**QQ. Vertical Circulation**

*Area:* Stairs: 720 square feet (2 stairs @ 9' x 20' per floor).  
Elevator: 84 square feet (42 sf per floor).  
Elevator Machine Room: 72 square feet.

*Function:* Vertical circulation.

*Adjacencies:* As required for efficient station layout.

*Design Issues:*

Security: None required.

Furnishings: No requirements.

Finishes: See Chapter 5 Specification Section 09 00 00, Type B, C, or D.

Doors: See Chapter 5 Specification Section 08 14 00.

Plumbing: No requirements.

HVAC: See Chapter 5 Specification Section 23 00 00.

Lighting: See Chapter 5 Specification Section 26 50 00.

Power: As required for elevator.

Communications: House PA

Equipment: No requirements.

Other:

■