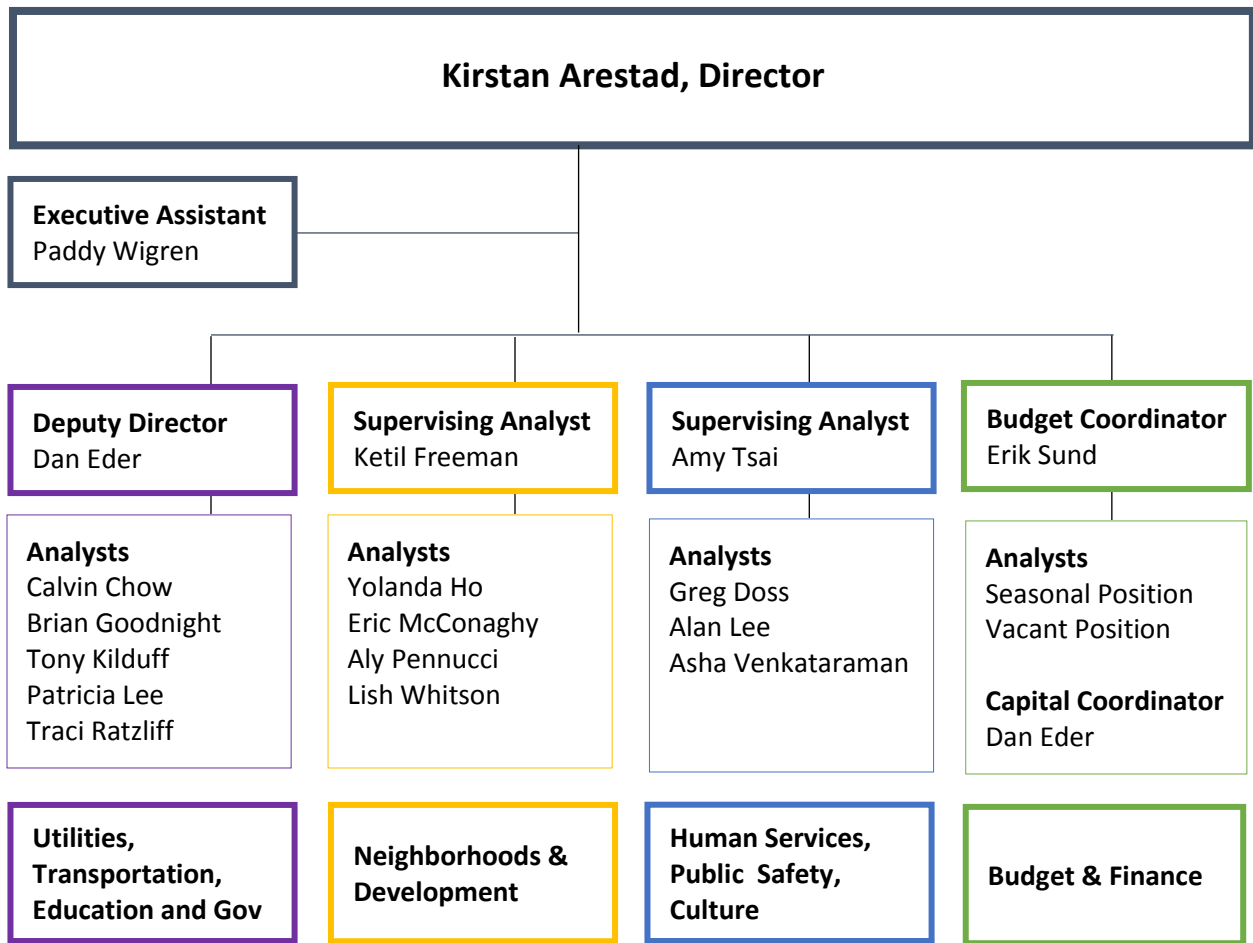


SEATTLE CITY COUNCIL CENTRAL STAFF ORGANIZATIONAL CHART & CONTACT LIST

Update: 03.18.2018



Contact List

Kirstan Arestad, Director	206.615.0054	kirstan.arestad@seattle.gov
Paddy Wigren, Executive Assistant	206.386.1381	patrick.wigren@seattle.gov

Dan Eder, Deputy Director	206.684.8147	dan.eder@seattle.gov
Calvin Chow, Analyst	206.684.4652	calvin.chow@seattle.gov
Brian Goodnight, Analyst	206.684.5597	brian.goodnight@seattle.gov
Tony Kilduff, Analyst	206.684.3580	tony.kilduff@seattle.gov
Patricia Lee, Analyst	206.386.0078	patricia.lee@seattle.gov
Traci Ratzliff, Analyst	206.684.8153	traci.ratzliff@seattle.gov

Ketil Freeman, Supervising Analyst	206.684.8178	ketil.freeman@seattle.gov
Yolanda Ho, Analyst	206.256.5989	yolanda.ho@seattle.gov
Eric McConaghy, Analyst	206.615.1071	eric.mcconaghy@seattle.gov
Aly Pennucci, Analyst	206.684.8148	aly.pennucci@seattle.gov
Lish Whitson, Analyst	206.615.1674	lish.whitson@seattle.gov

Amy Tsai, Supervising Analyst	206.684.8178	ketil.freeman@seattle.gov
Greg Doss, Analyst	206.256.6225	gregory.doss@seattle.gov
Alan Lee, Analyst	206.386.9107	alan.lee@seattle.gov
Asha Venkataraman, Analyst	206.684.5382	asha.venkataraman@seattle.gov

Erik Sund, Budget Coordinator	206.684.8368	erik.sund@seattle.gov
Dan Eder, Capital Coordinator	206.684.8147	dan.eder@seattle.gov
Seasonal Budget Position		
Vacant Position		

Update: 02.20.2018