

SEATTLE JUSTICE CENTER

SEATTLE POLICE HEADQUARTERS, 610 FIFTH AVE.

- 136 Codes & Protocols**, Pam Beyette, Michael Davis, Norie Sato and Richard Turner, 2003. Cast bronze, limestone and glass installation. **LOBBY.**

SEATTLE JUSTICE CENTER

MUNICIPAL COURT OF SEATTLE, 600 FIFTH AVE.

- 137 Points of View**, Pam Beyette, Michael Davis, Norie Sato and Richard Turner, 2003. Granite, bronze and limestone sculptures. **LOBBY AND PLAZA.**

- 138 Witness and Dilemma, Levels, Weights and Measures**, Pam Beyette, Michael Davis, Norie Sato and Richard Turner, 2002. Cast bronze sculptures. **STAIRWELL BETWEEN FLOORS 2 AND 3.**

- 139 Seattle Justice Center Elevator Lobbies**, Marita Dingus, Joanne Hammer, Deborah Lawrence, Brad A. Miller, Darlene Nguyen-Ely and M.A. Papanek-Miller. Various wall-mounted installations. **FLOORS 2, 3 AND 9-12.**

- 140 Day and Night**, Anna Skibska, 2002. Suspended glass sculptures. **JURY ROOM.**

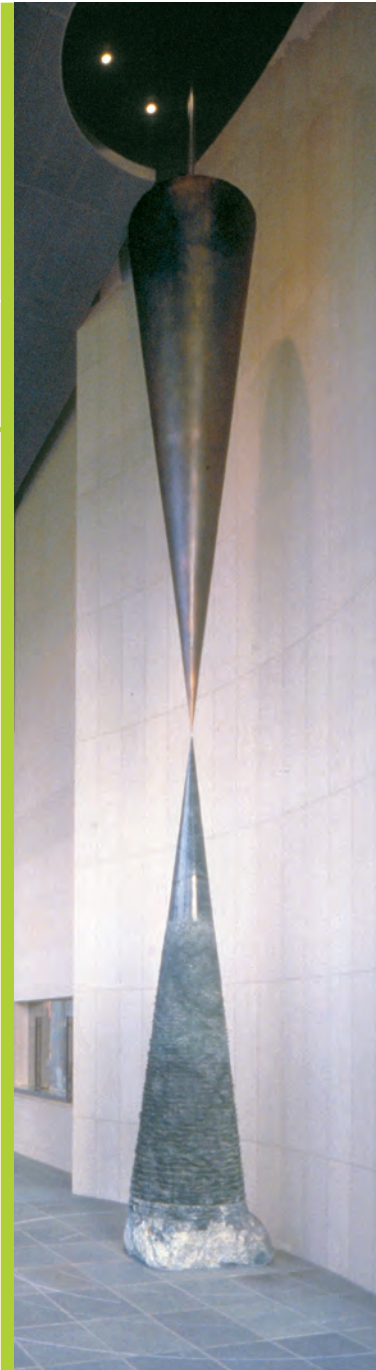
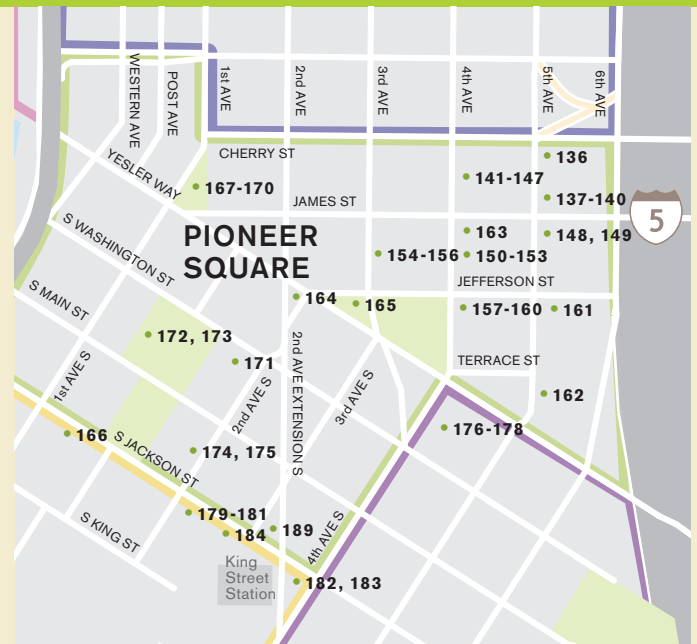


PHOTO: TOM COLLICOTT.

**SEATTLE CITY HALL** 600 FOURTH AVE.

- 141 Blue Glass Passage**, James Carpenter, 2003. Glass, stainless steel, aluminum and maple walkway. **SUSPENDED WALKWAY, LEVEL 2.**
- 142 continuum**, Beliz Brother, 2003. Glass wall and panel with photographic film. **ENTRANCE TO CITY COUNCIL OFFICES, LEVEL 2.**
- 143 return**, Beliz Brother, 2003. Glass wall and panel with photographic film. **FIFTH AVE. LOBBY.**
- 144 Evolving Wing and the Gravity of Presence**, Eric Robertson, 2003. Aluminum, yellow cedar, copper and stone wall sculpture. **FIFTH AVE. LOBBY.**
- 145 illumine**, Beliz Brother, 2005. Suspended colored glass discs. **INSIDE GLASS TOWER AT FOURTH AVE. AND CHERRY STREET.**
- 146 Water Weaving Light Cycle**, Nobuho Nagasawa, 2005. Fiber-optic and sound installation. **STAIRWELL OFF CHERRY AT FOURTH AVE.**
- 147 Cultural Heritage and Sister City Collection**, Various artists. **OFFICE OF INTERGOVERNMENTAL RELATIONS, BERTHA KNIGHT LANDES ROOM AND THE MAYOR'S HISTORICAL CONFERENCE ROOM.**



PHOTO: BELIZ BROTHER.

PIONEER SQUARE (CONTINUED)

KING COUNTY JAIL 500 FIFTH AVE.

- 148 Jail House Garden**, Martha Schwartz, 1987. Tile and concrete plaza. *King County Public Art Collection (4Culture)*. NORTH PLAZA.
- 149 Torus Torum**, Benson Shaw, 1984. Mixed media relief. *King County Public Art Collection (4Culture)*. SOUTH PLAZA.

KING COUNTY ADMINISTRATION BUILDING 500 FOURTH AVE.

- 150 Rhododendrons**, Harold Balazs, 1976. Porcelain enamel mural. *King County Public Art Collection (4Culture)*. FOURTH AVE. ENTRANCE.
- 151 Untitled #625**, Robert Sperry, 1985. Ceramic tile mural. *King County Public Art Collection (4Culture)*. FOURTH AVE. LOBBY.
- 152 Lunar Promenade**, Alden Mason, 1989. Acrylic on canvas. *King County Public Art Collection (4Culture)*. FOURTH AVE. LOBBY.
- 153 Sandworm**, George Tsutakawa, 1985. Steel sculpture. *King County Public Art Collection (4Culture)*. FIFTH AVE. ENTRANCE.

MARTIN LUTHER KING JR. COUNTY COURTHOUSE

516 THIRD AVE.

- 154 Truth Crushed to the Earth Will Rise Again**, Linda Beaumont, 2005. Terrazzo, marble and cast glass floor. *King County Public Art Collection (4Culture)*. FIRST FLOOR LOBBY.
- 155 From these Hills, from these Waters**, Douglas Cooper, 2005. Charcoal and graphite on paper on panel. *King County Public Art Collection (4Culture)*. FIRST FLOOR LOBBY.
- 156 Standing Tall**, Linda Beaumont, 2010. Light; hand-painted, etched and photo laminated glass; and steel. *King County Public Art Collection (4Culture)*. SECOND FLOOR ELEVATOR LOBBY.

THE CHINOOK BUILDING 401 FIFTH AVE.

- 157 Confluences**, Anna Valentina Murch, 2007. Painted steel ceiling installation. *King County Public Art Collection (4Culture)*. FIFTH AVE. ENTRANCE.
- 158 Brewing Storm, Pacific Coast Trail and Stand of Firs, Cumberland**, Glenn Rudolph, 2007. Etched stone mural. *King County Public Art Collection (4Culture)*. NORTH SIDE OF BUILDING EXTERIOR.
- 159 Longacres, Kent**, Glenn Rudolph, 2007. Etched stone mural. *King County Public Art Collection (4Culture)*. SOUTH SIDE OF BUILDING EXTERIOR.
- 160 Rotations**, Anna Valentina Murch, 2009. Steel and light. *King County Public Art Collection (4Culture)*. LOBBY, NORTH WALL.

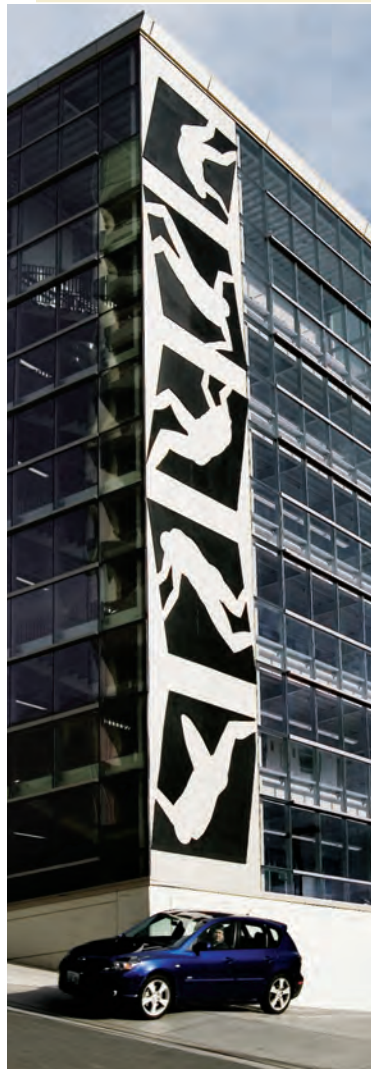


PHOTO: SPIKE MAFFORD.

ALONG FIFTH & SIXTH AVENUES

- 161 Tumbling Figure: 5 Stages**, Michael Spafford, 1979. Wall-mounted epoxy and aluminium. *King County Public Art Collection (4Culture)*. SIXTH AVE. AND JEFFERSON STREET.

- 162 Songbird**, John Henry, 2012. Steel and paint. *Collection of Martin Selig Real Estate*. FIFTH AVE. AND TERRACE STREET.

AROUND PIONEER SQUARE AND ALONG YESLER WAY

- 163 City Light, City Bright**, Nancy Blum, 2001. Cast iron utility cover. *Southeast corner of intersection at Fourth Ave. and James Street*.

Other utility covers by Betsy Best-Spadaro, Garth Edwards, Nathan Jackson, Anne Knight, Barbara Earl Thomas, 1975–2002. Cast iron utility covers. *Various locations throughout downtown*.

- 164 Fortson Square**, Elizabeth Conner, Cliff Willwert and Brian Goldbloom, 2001. Sited sculptural installation with recycled architectural artifacts, cast objects and granite sculpture. *Second Ave. and Yesler Way*.

- 165 Prefontaine Fountain**, Carl F. Gould, 1926. Granite and blue tile basin. *Third Ave. and Yesler Way*.

- 166 Pioneer Square (First Hill Streetcar)**, Claudia Fitch, 2013. Painted steel “beads” on streetcar poles. *South Jackson Street Streetcar platform at Occidental and Second Ave. South*.

PIONEER SQUARE (CONTINUED)

PIONEER PLACE PARK FIRST AVE. SOUTH AND YESLER WAY.

- 167 Seattle Totem Pole**, Charles Brown, William Brown, James Starfish, Robert Harris, William Andrews, James Andrews, 1940. Polychrome-carved Alaskan red cedar pole.
- 168 Pergola**, Julian Everett, 1909. Cast iron and glass structure. *Seattle Parks and Recreation Collection.*
- 169 Chief Seattle Fountain**, James Wehn, 1909. Bronze bust and cast iron basin.
- 170 Day/Night**, Hachivi Edgar Heap of Birds, 1991. Porcelain enamel and cedar panels.

AROUND OCCIDENTAL SQUARE OCCIDENTAL AVE. SOUTH & SOUTH MAIN STREET.

- 171 Anawog**, Jan Evans, 1978. Painted steel sculpture. **SECOND AVE. AND SOUTH WASHINGTON STREET.**
- 172 Seattle Fallen Firefighters Memorial**, Hai Ying Wu, 1995. Cast bronze and granite sculpture. *Seattle Bravest Charity.* **OCCIDENTAL SQUARE.**
- 173 Killer Whale, Bear, Tsonqua, Sun and Raven**, Duane Pasco, 1971. Carved cedar sculptures. **OCCIDENTAL SQUARE.**



PHOTO: COURTESY DUANE PASCO.

SEATTLE FIRE DEPARTMENT HEADQUARTERS 301 SECOND AVE. S.

- 174 Firefighter Silhouette**, Tom Askman, 1987. Bronze and zinc cut-out sculptures. **BUILDING EXTERIOR.**
- 175 Firefighters' Memorial**, Ellen Ziegler, 1987. Colored terrazzo and brass floor. **LOBBY.**

FIRE STATION 10 400 SOUTH WASHINGTON STREET.

- 176 Call and Response**, Stuart Nakamura, 2008. Boulder, inlaid pavers and metal screen. **FOURTH AVE. SOUTH AND SOUTH WASHINGTON STREET.**
- 177 Sentinels**, Gloria Bornstein, 2008. Steel sculptures. **ALONG SOUTH WASHINGTON STREET.**
- 178 bamboo, luminous**, Nancy Chew and Jacqueline Metz, 2008. Resin and light sculpture. **ALONG FIFTH AVE. SOUTH.**

KING STREET CENTER

201 SOUTH JACKSON STREET.

- 179 The Plaza at King Street Center**, Jack Mackie with NBBJ, Hewitt Architects, 1999. Concrete and steel plaza with landscaping. *King County Public Art Collection (4Culture).* **SOUTHEAST CORNER OF BUILDING.**
- 180 Earth, Wind and Water**, Maya Radoczy, 1999. Kiln-cast glass lighting. *King County Public Art Collection (4Culture).* **BUILDING INTERIOR.**



PHOTO: YAM BRAND.

- 181 Rain Forest Gates**, Jean Whitesavage and Nick Lyle, 1999. Hand-forged and painted steel gates. *King County Public Art Collection (4Culture).* **FRONT GATES.**

KING STREET STATION 303 SOUTH JACKSON STREET.

- 182 Windvanes**, Ned Kahn, 2000. Steel and aluminum columns. *Sound Transit Art Program Collection.* **STATION CANOPY SUPPORT COLUMNS.**
- 183 Moto**, Jerry Mayer, 2004. Aluminum reflective signage. *Sound Transit Art Program Collection.* **ON COLUMNS OPPOSITE THE COMMUTER RAIL PLATFORM.**

ALONG SOUTH JACKSON STREET

- 184 4 (Where shall I go ahead?)**, Bill Will, 2001. Sandblasted granite seating. **UNION STATION SQUARE, THIRD AVE. SOUTH AND SOUTH JACKSON STREET.**