

Artist Designed Infrastructure: Bioretention Edition

Information Session

11/25/2019

ARTS



City of Seattle

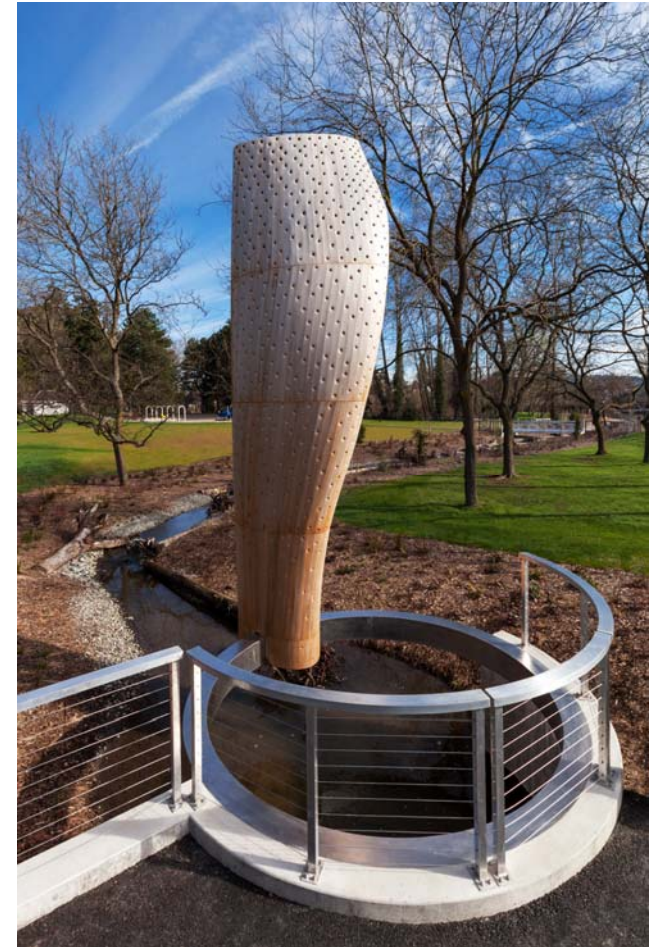
Agenda

- Welcome & Introductions
- Program Overview
- Project Background
- Review Project Guidelines
- How to apply
- Questions



Public Art Program Overview


- Percent-for-art program, est. 1973
- 1% of eligible capital improvement dollars set aside for public art
- Provide public art opportunities in parks, libraries, community centers, on roadways, bridges and other public venues
- Opportunities include commissions, purchases, and installation of artworks




Gyre, John Grade (SPU 1% for Art Project)

Public Art Master Plan



 [vaughnbell_book_1_dww_artmasterplan_smallfile.pdf](#)
[Download File](#)

 [vaughnbell_book_2_dww_artmasterplan_smallfile.pdf](#)
[Download File](#)

Commissioned by the City of Seattle
[Office of Arts & Culture](#)
[Seattle Public Utilities](#)
Written by Vaughn Bell
Graphic Design by [Amy Harrington](#)

Executive Summary:

The Drainage and Wastewater Art Master Plan guides 1% for Art investments related to Drainage and Wastewater's work. The Plan was developed through a comprehensive, months-long process of research and staff and stakeholder discussions. Book 1, the Vision for Public Art in Drainage and Wastewater, provides a unified conceptual framework within which public art unfolds and offers guidance on the conception and execution of public art projects and programs. Book 2 presents a catalogue of Opportunities for Public Art.

Following are some key aspects of the Vision for Public Art:

Equity, Accessibility, Relevance and Engagement
Artworks should be accessible to a diverse audience while maintaining rigor, relevance, depth of meaning, and aesthetic value. To go further, public art should engage people and communities across cultures, especially youth. The Drainage and Wastewater public art program seeks to address fundamental issues of equity and environmental justice by applying an equity lens to all aspects of the public art process, and by actively seeking out opportunities to engage communities in these issues through public art projects.

The Vital Work of Drainage and Wastewater in Seattle

Seattle Public Utilities Drainage and Wastewater manages and maintains the flow of water through our city. By zooming out to see the connection of clouds, pipes, streets, swales and Sound, we begin to grasp the scale and importance of the work that drainage does. Seattle is a city of water, with plentiful rain and interlaced with creeks, lakes and Puget Sound. The context of Seattle as a city, the unique environment in which we are situated, and the history we inherit all inform how public art practice takes place here.

The Vital Work of Public Art

Through public art, we imagine and experience our place in a new way. Public art provides an opportunity for awareness of ecology and community

Public Art Roadmap

Blueprint for combining the engineering mindset of solving problems and an artistic mindset of asking questions, revealing complex meanings, and creating experiences.



Artist Designed Infrastructure: Bioretention Edition

PROJECT OPPORTUNITY: Roadside Bioretention Kit of Parts



**Community Engagement Focus
Placemaking/Placekeeping Focus**

Location(s):	places where DWW is building roadside bioretention throughout the City
Budget Range:	TBD
Time Frame:	2018-ongoing
Priority (1-3):	1
Sources and Inspiration:	We are the Weather, Habitat and Inhabitants,

In addition to managing and cleaning storm water, roadside bioretention adds beauty and natural habitat to the streetscape. While passersby may admire plants growing in the swales, it is often not obvious how the bioretention functions. Visual elements that bring to people’s attention the flow of water are encouraged. Artistic elements should be poetic rather than didactic, but may serve an educational function.

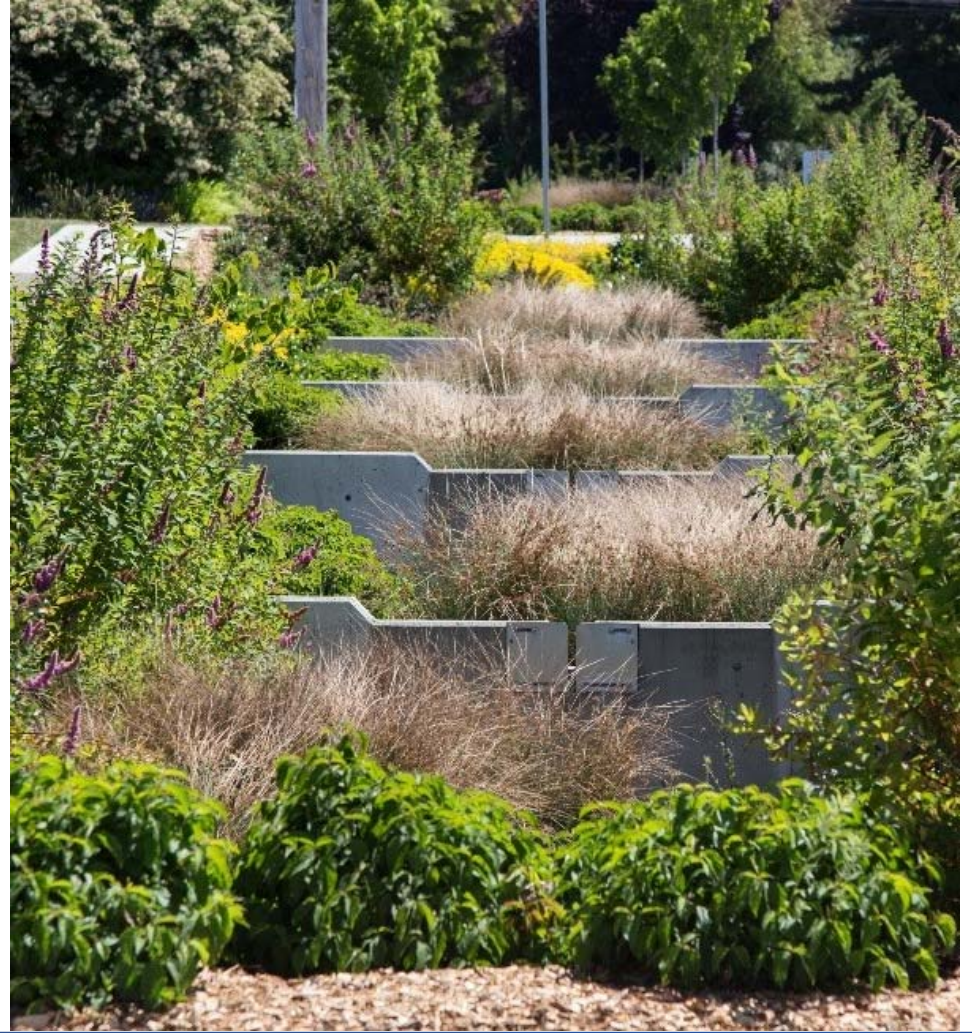
The selected artist will design a kit of parts of artistic elements that may be incorporated into roadside bioretention responding to community input. Not all elements will be incorporated in every location, so each part of the kit must stand alone as well.

The artist will work with staff and engineers to produce specifications for incorporating the designs. The artist will also fabricate or work with a fabricator to produce the elements such as inlays. The artist will not be responsible for installing the artwork but rather will deliver a complete package that can be incorporated into project CD and implemented as part of construction. Thus, installation specifications should be simple and able to be incorporated by SPU project contractors.



Roadside Bioretention Facility Examples





Neighborhood Co-benefits
water pollution prevention +



Traffic Calming



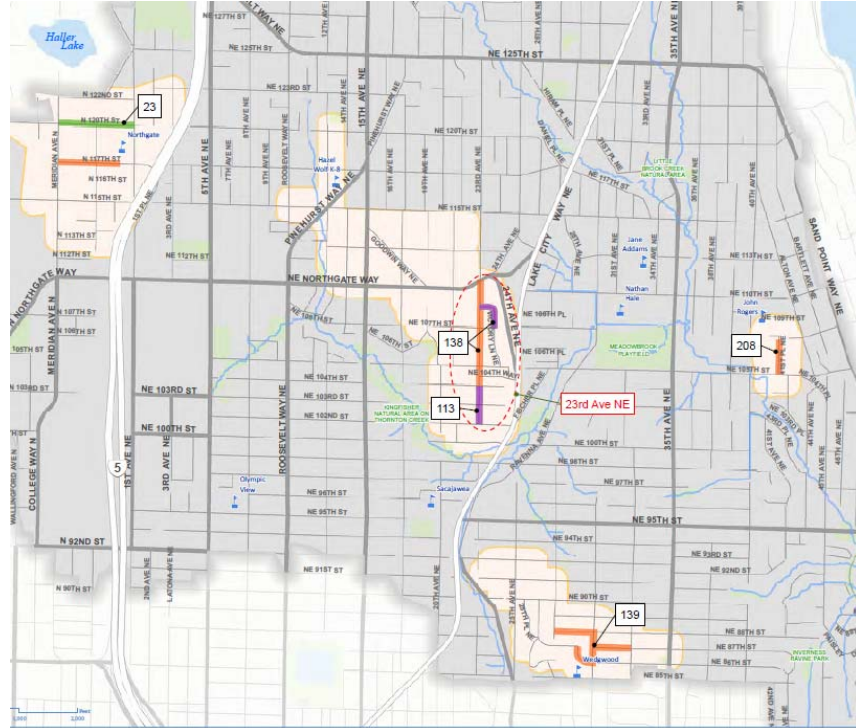
New Street Trees



Beauty



Sidewalk



Thornton Creek Natural Drainage System

- Prototype for kit of projects (Phase I)

Calling all artists that....

- live in Washington State
- work collaboratively with design teams, community groups, & stakeholders
- can work with a client (SPU) to create designs in strict parameters
- have a flexible & collaborative attitude
- have experience developing construction documents & specifications



The Kit of Part includes (but not limited to)...

- Inlay elements, patterns/lettering
- Edging
- Signage
- Stepping-stones and/or benches
- Drainage infrastructure (grating, diverters, channels)
- Small-scale 3-D objects/sculptures
- Design plans and specifications for each artistic element
- Installation method
- Engineered stamped drawings if necessary
- Approximate cost of fabrication for each artistic element
- List of local fabricators with specializations indicated



Kit of Parts Phases

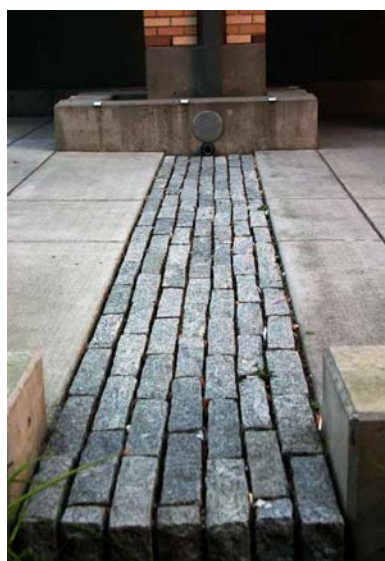
Phase 1: Prototype

- Design & develop artistic elements to a specific SPU project
- Fabricate & install artistic elements to identified SPU project

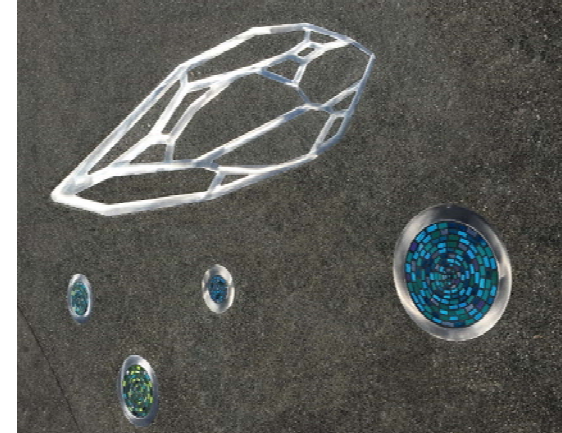
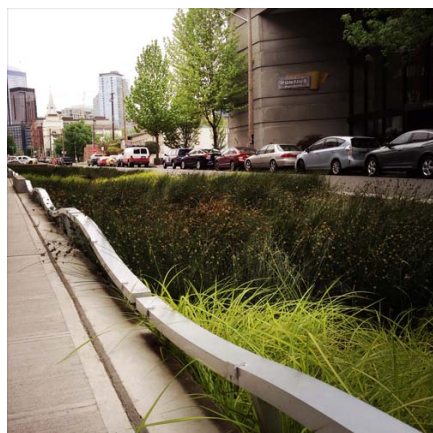
Phase 2: full “Kit of Parts” Catalog

- Design & develop complete catalog of artistic elements
- SPU will utilize the catalog to engage community members for incorporation in future bioretention projects





Examples & Inspiration







How do I apply?



Elise Koncsek, *My Home*

<https://www.callforentry.org>

[FIND CALLS](#)[HELP](#)[HOW IT WORKS](#)[BLOG](#)[CONTACT US](#)[LOGIN](#)[ARTIST SIGN UP](#)

FOR ARTISTS

CaFÉ allows artists to apply to multiple calls for entry. Sign up and start applying to calls today!

[ARTIST SIGN UP](#)

FOR ORGANIZATIONS

Easily build your call for artists, manage your applications, and jury with CaFÉ.

[SCHEDULE A DEMO](#)

Artist Designed Infrastructure: Bioretention Edition



MORE INFO

APPLY NOW

Call Type: Public Art

Eligibility: Regional

State: Washington

Entry Deadline: 12/9/19

Days remaining to deadline: 26

The Seattle Office of Arts & Culture, in partnership with Seattle Public Utilities (SPU), is seeking an artist(s) to design and develop a "kit of parts" or ready-made catalog of artistic elements (e.g. inlays such as patterns or lettering, edging, signage, stepping-stones, grating, small sculptures, etc.) that can be incorporated into neighborhood bioretention stormwater projects. The selected artist(s) will create design plans and specifications that will allow SPU to contract with fabricators to produce and install each of the design elements. The completed catalog will allow communities to customize bioretention projects in their neighborhoods.

Artist budget: \$70,000.00

Open to artists residing in Washington State. Artists can apply as a team of no more than two.

Submissions must be completely uploaded to CaFE no later than 10:59 pm (PST) on Monday, December 9, 2019.

MY CAFÉ ENTRIES MY PROFILE MY PORTFOLIO APPLY TO CALLS CHECKOUT CAFÉ HELP LOG OUT

Agreement

FLOW 2020: Temporary Art Exhibition Along the Ship Canal

Please review the rules and terms to apply.

Application Materials Are Public Information

Applications submitted to the Office of Arts & Culture become public information. Members of the public may see and copy them if they make a formal request. This is required by the Washington State Public Disclosure Act (PDA:RCW 42.17). To request a copy of the act, contact the State of Washington Code Revisers' Office in Olympia at 360-753-6804.

Discrimination Is Not Allowed On City-Funded Projects

Applicants receiving funds from the Office of Arts & Culture must comply with Seattle Municipal Code Chapter 20.42, pertaining to prevention of discrimination in city contracts, and Chapter 5.45, pertaining to license requirements. The complete text of these city codes is available at the City Clerk's office and on their Municipal Code Web page at <http://clerk.ci.seattle.wa.us/~public/code1.htm>.

Business License Is Required

Individuals awarded funds from the Office of Arts & Culture must have a Seattle business license and a Washington state

By clicking "Agree": I acknowledge that I have read and accept the above terms.

Agree

Decline

Print

Copyright 2019 Western States Art Federation.

[Terms of Service](#) | [Privacy Policy](#)



Application Tips

- Use [Mozilla Firefox](#) as your browser
- Don't wait until the [last](#) minute to apply
- The image identification list allows you to [add more context](#) to the images you submit beyond materials, measurements and amount.
- Have [another set of eyes](#) look over your application materials
- [Preview](#) your submission before hitting the submit button
- The application text boxes only accept plain text. If the preview of your materials looks jumbled copy and paste your text into [notepad](#) then re-paste it into the application. (notepad is a program that removes the underlying code that can hang on when text is copied from word)
- Take advantage of the [Café help page](#)
- Google search is a great resource for technical questions



Selection Process

- The selection process will include a review by a peer panel and advisors who will review all interested applicants' proposals and materials.
- The panel will recommend one artist to the Public Art Advisory Committee.



Timeline

December 9th (10:59p.m.) Deadline to Apply

January 2020 Artist Selection Panel

January 2020 Public Art Advisory Committee

February 2020 Notifications to Applicants

Winter 2020 Phase I: Prototyping



Questions?

