

Art & Open Spaces

Art and open space often work together to help with new development, the activity on the street and quiet places in between. They become an important part of any neighborhood, reinforcing its identity, creating visual and physical connections, and marking important places.

Art

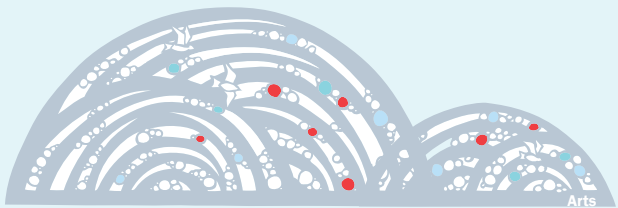
The Northgate Art Plan was developed in 2005 through collaboration between Benson Shaw, a City-sponsored artist-in-residence, and the local community. The Plan, commissioned by the Mayor's Office of Arts & Cultural Affairs (Arts), identifies key locations for public art and provides guidance for future artworks with emphasis on natural themes.

Dana Lynn Louis, *Circulation*

Location: Northgate Library
The artist created 10 panels of kiln-formed glass for the building's front entry. The artwork uses circles as an abstract reference to the interconnectedness of the natural world.
Funded by 1% for Art funds, Libraries for All Bond

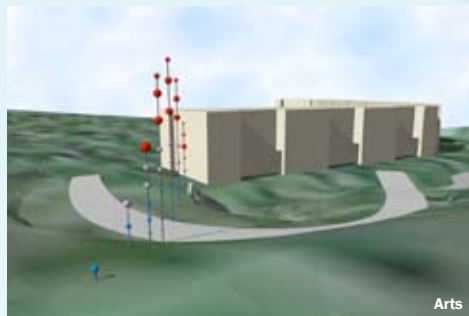


Arts



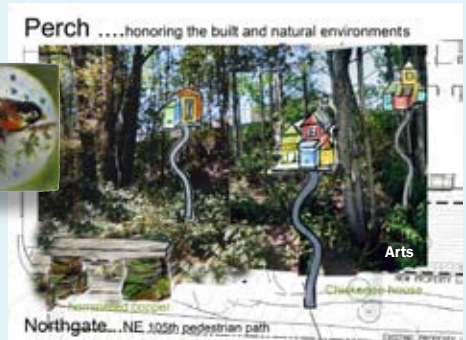
Nikki McClure, *The Eddy*

Location: Entry plaza of the new Northgate Community Center
A series of blue-gray metal waves inset with colored glass bubbles, making reference to Thornton Creek.
Funded by Seattle Parks and Recreation's 1% for Art Funds generated through the 1999 Community Centers Levy



Arts

See this glass block to the side of this display.



Arts

Linda Wysong, *Perch*

Location: 5th Avenue NE Streetscape Improvement Project
A series of hammered copper sculptures designed as stopping places and colorful wooden birdhouses on poles along 105th Street NE accompany fused glass block paving inlays of bird images installed along 5th Avenue NE.
Funded by Seattle Department of Transportation's 1% for Art funds

Benson Shaw, *SURGE: Falling Water*

Location: Thornton Creek Water Quality Channel
One of three vignettes illustrating Seattle Public Utilities' mission of protecting and enhancing water quality and managing stormwater flow and treatment.
Funding through Seattle Public Utilities

Open Space

This summer, Northgate will gain several new or improved open spaces:

Streetscape improvements along 5th Avenue NE

This project will bring generous new pedestrian-friendly sidewalks and crossings to a two-block segment between 103rd Street and Northgate Way NE. Future development of the streetscape will continue to the north and south.

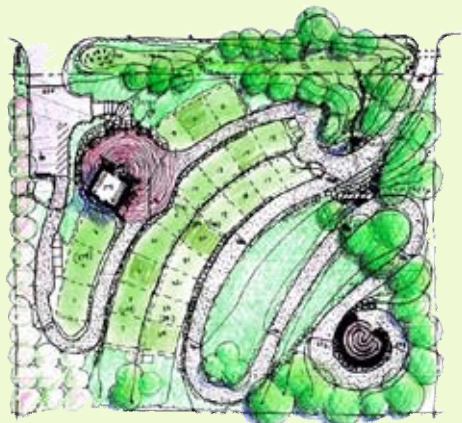
Thornton Creek Water Quality Channel

Located at the headwaters of Thornton Creek's southern branch on the former South Lot of the mall, the channel enhances Thornton Creek's water quality and provides 2.7 acres of valuable open space readily accessible to all. Water will flow through the channel throughout the year, with higher flows during rainy weather. Pathways blooming with native landscaping will look out over a series of cascading waterfalls and bioengineered swales. The channel is at the heart of the Thornton Place development and visitors can stroll between new retail stores, the condominiums being built around the Channel's edge, and the busy King County Metro Transit Center across the street.

Plan view of Thornton Creek Water Quality Channel
SvR Design for Seattle Public Utilities



Landscape Architect's rendering of the completed Thornton Creek Water Quality Channel
SvR Design for Seattle Public Utilities



Site Plan of Maple Leaf Community Garden

Maple Leaf Community Garden

The Northgate community is transforming a vacant lot into a new community garden. Aided by a City neighborhood matching grant, the garden will be located at the corner of 5th Avenue NE and NE 103rd Street, adjacent to the Park 6 natural habitat area. The garden is designed as a pleasant oasis, featuring a meandering path that winds through a steep ravine, and benches where visitors can pause and rest amidst lush vegetation.

“Promote a system of quality open spaces, recreational and natural spaces and pedestrian connections ...”

Seattle Comprehensive Plan