



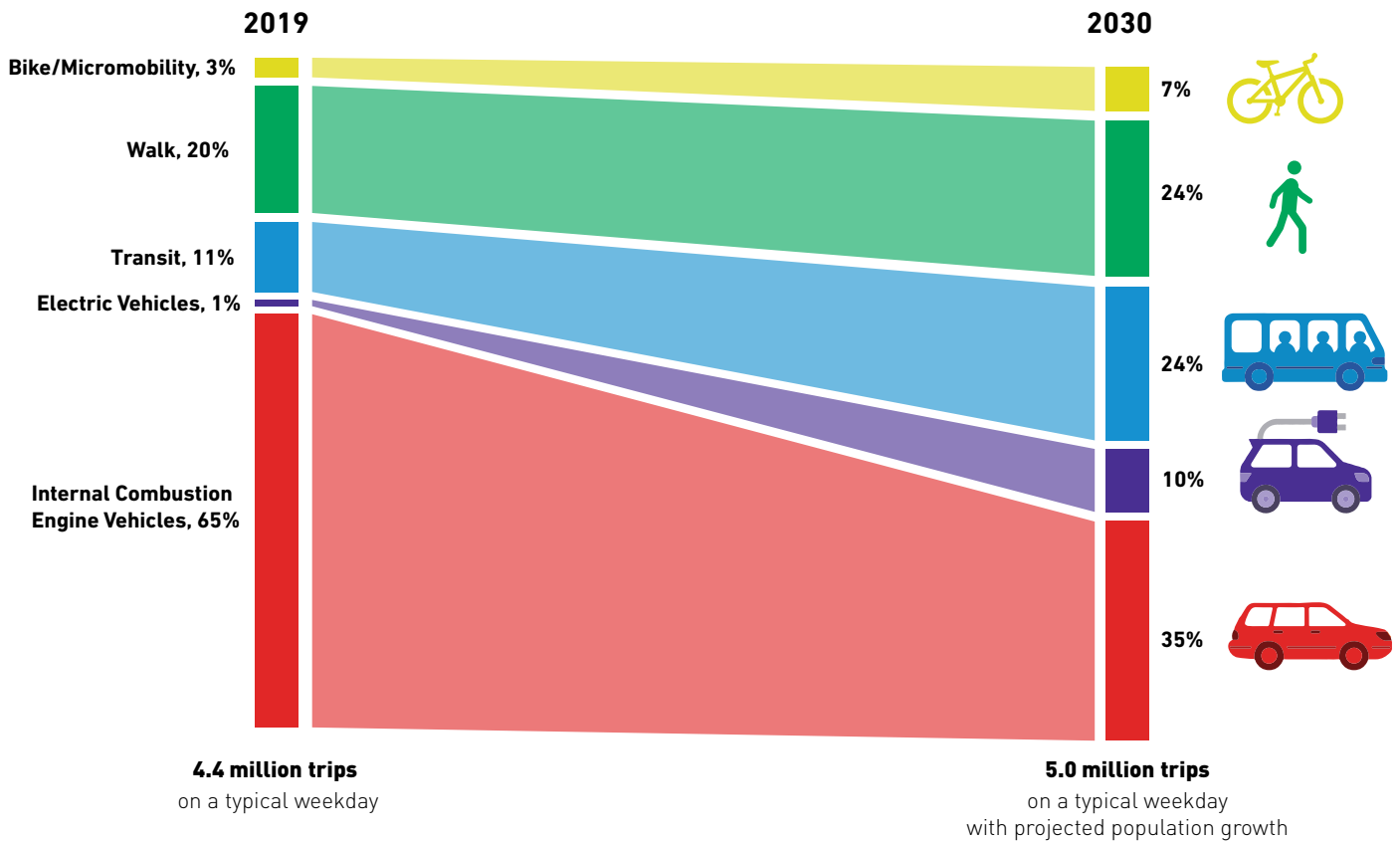
Executive Summary

Our climate is changing and we want to meet the moment.

Investments in walking, rolling, biking, and transit - many of them thanks to voters for the Levy to Move Seattle and Seattle Transit Measure - have helped move the needle. However, as our population has grown, we find ourselves a long way from meeting our goals of reducing greenhouse gas (GHG) emissions from transportation: 82% GHG reduction from a 2008 baseline; and for 90% of all personal trips and 30% of all freight trips in the city to be zero emission by 2030.

Transportation is the largest GHG emission contributor in Seattle and the area where we at SDOT have the most influence to make meaningful change. **So, we're stepping up, developing the Climate Change Response Framework (CCRF) to accelerate a reduction in Seattle's transportation emissions.**

Potential Outcomes of the Climate Change Response Framework



Mayor Harrell's December 2022 Executive Order directed SDOT to develop a **framework for transportation-focused climate change response**

Climate Change Response Framework Strategies



1. Create a Culture of Climate Action and Optimism. The work starts here, at SDOT. This framework will guide our overarching approach and urgency to respond to climate change, transform our organizational culture, and affirm how our climate goals guide project development - all while centering community co-creation and climate justice.



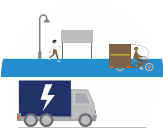
2. Make short trips safe, affordable, and zero-emission. So many of our daily trips - especially our non-commute trips - cover short distances and can be accomplished outside of our personal vehicles with the right infrastructure, services, and programming. We will accelerate climate-friendly investments at the neighborhood scale to make this happen.



3. Make it more convenient, reliable, and affordable to ride transit. Robust transit service, prioritizing transit efficiency on our streets, and safe, sustainable, and reliable connections to buses, light rail, and the streetcar will be the backbone of our climate response.



4. Enable use of climate-friendly travel choices. We'll continue to expand innovative and community-centered programming so that using shared and zero-emission travel options helps Seattleites save money, improves public health, and transitions us away from 20th-century, car-dominant transportation options.



5. Improve freight efficiency. Moving goods and delivering services in more efficient ways not only reduces emissions, it's also good for business by improving operations and predictability. Co-creating solutions that work for our service providers and businesses, including large-scale freight and maritime industries, means we can leverage our climate response and strengthen our local communities for a win-win.



6. Electrify Seattle. Electrification strategies will reduce emissions for necessary personal and freight vehicle trips. We are committed to supporting our partners in infrastructure installation and pilot programming, and leading by example with our own fleet to help accelerate the electrification of all vehicles. We'll also support the electrification of regional transit fleets with our partners at King County Metro and Sound Transit.

**There is good news: much of this work is simply
doing more of what we're already doing**

The CCRF is composed of 27 strategies across 6 categories. Each one is detailed further in Chapter 5.



Create a culture of climate action and optimism

- Lead by Example Through Internal Operations and Processes
- Co-create Climate Solutions and Optimistically Communicate the Benefits



Make short trips safe, affordable, and zero emission

- Explore Launching an E-Bike Rebate Program
- Implement Low-Pollution Neighborhoods
- Accelerate Pedestrian, Bike, and E-Mobility Network Implementation
- Expand and Reduce the Cost of Shared Micromobility
- Expand the Bike and Micromobility Parking Program
- Launch a Community and Mobility Hubs Program



Make transit more convenient, reliable, and affordable

- Accelerate Bus-Only Lane Installations and Other Travel Time + Reliability Improvements
- Continue to Support Partners in Expansion of Link Light Rail Network
- Support Increased Transit Oriented Development (TOD) with Transit Expansion
- Continue to Fund Bus Service Increases
- Increase Reach of Reduced Transit Fare Programs



Enable use of climate-friendly travel choices

- Expand Reach of Existing Transportation Demand Management Programs
- Pursue Off-Street Parking Pricing and Usage Reforms
- Support the State and Region in Advancing Mobility Management Strategies
- Explore Launching a Mobility Wallet Program
- Implement On-Street Parking Reforms
- Pursue Reforms to Limit Off-Street Parking Supply in New Development



Improve freight efficiency

- Enable More Right-Sized, Zero-Emission Urban Delivery Vehicles
- Implement Commercial Vehicle Permitting and Delivery Fees
- Increase the Number of Commercial Vehicle Loading Zones



Electrify Seattle

- Support Electrification of Personal Vehicles
- Support Electrification of Freight Vehicles
- Support Electrification of Shared Mobility Vehicles
- Support the Transition to Zero-Emissions Transit
- Electrify the City Fleet

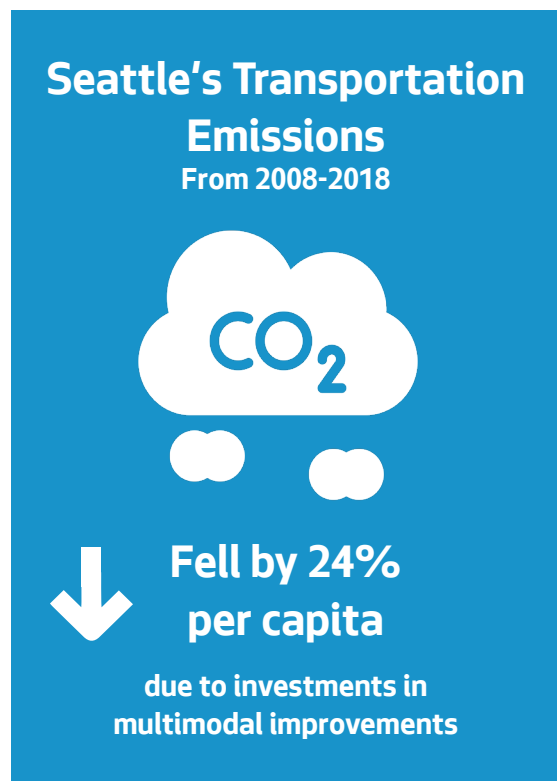


Source: SDOT's Flickr

By 2030, we estimate that we can almost double the share of zero emission trips in Seattle through implementing the CCRF. We can make progress now by scaling up, innovating, and accelerating this work.

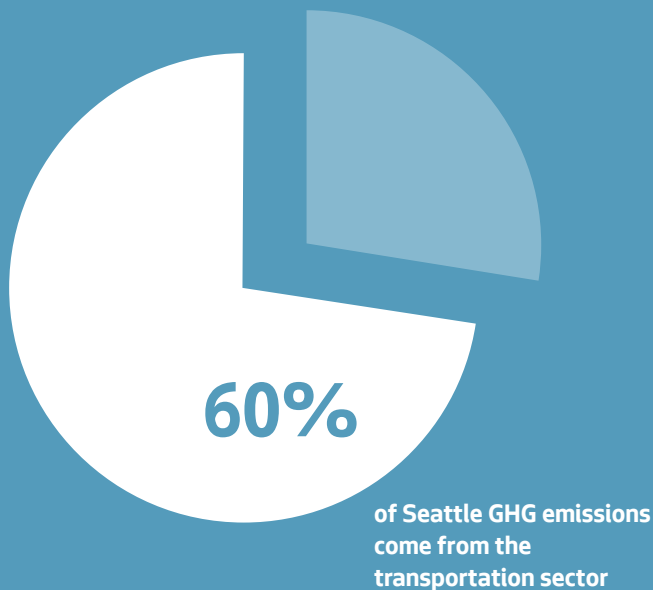
A successful climate response means making it easier to walk, roll, bike or take transit for most trips, while electrifying as many remaining necessary car and freight trips as possible.

The CCRF outlines strategies that we and our partners need to implement to effectively respond to climate change - while maximizing impact by creating significant community benefits. This is our work plan to reach our climate goals and achieve the healthy, safe, and equitable future we envision for Seattle.



Achieving our climate goals will require bold action and transformation

Seattle GHG Emissions



How can SDOT make an impact?

Because Seattle's primary energy source is carbon-free hydropower, the majority of the City's emissions come from transportation. The CCRF highlights strategies to reduce the emissions we produce as we travel around our neighborhoods, across Seattle, and beyond. Broadly, we want to make it easier for you to shift towards more efficient, shared, and sustainable travel options, while remaining personal and commercial vehicle trips become increasingly electric. At SDOT, our influence over street design, space allocation among travel options, and supportive programs means we play a central role.

We are all in this together.

CCRF Goal

Each of the strategies proposed in the CCRF helps achieve the climate action goal set forth in the draft Seattle Transportation Plan (STP) - a 20-year vision for the future of the city's transportation system:

Respond to climate change through innovation and a lens of climate justice.

The CCRF is rooted in climate and environmental justice, which links to our [Transportation Equity Framework \(TEF\)](#) and nearly a decade's worth of guidance delivered by the City's [Environmental Justice Committee](#) and through its [Equity and Environment Agenda](#). Like the TEF, the CCRF emphasizes affordable and accessible options for transportation and mobility for all people, with an emphasis on improvements that will benefit historically underserved communities.

In large part, our future will be achieved by accelerating efforts to increase walk, bike, and transit trips in significant numbers. Centering our approach on a shift to sustainable and efficient travel options will help us transition to a transportation culture that's more balanced and multimodal.

Implementing the CCRF will help shape and preserve the healthy, safe, and equitable future Seattle we envision

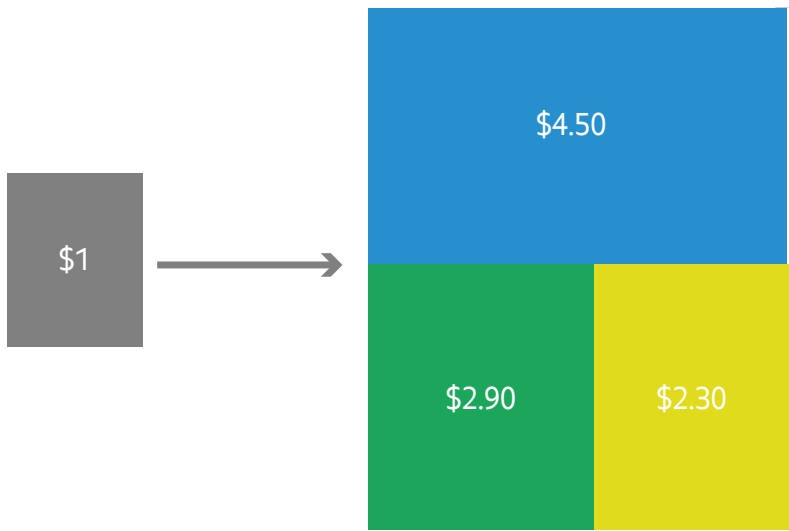
Community Benefits

The benefits of climate action - through a lens of One Seattle - span well beyond the environment. The actions needed to address climate change will:

- » deliver climate justice and transportation equity
- » make our streets safer
- » improve health outcomes
- » result in direct economic benefits to local communities

For each \$1 invested

\$9.70 in co-benefits



Safety - Less driving and safer streets lead to fewer crashes, injuries, and deaths.



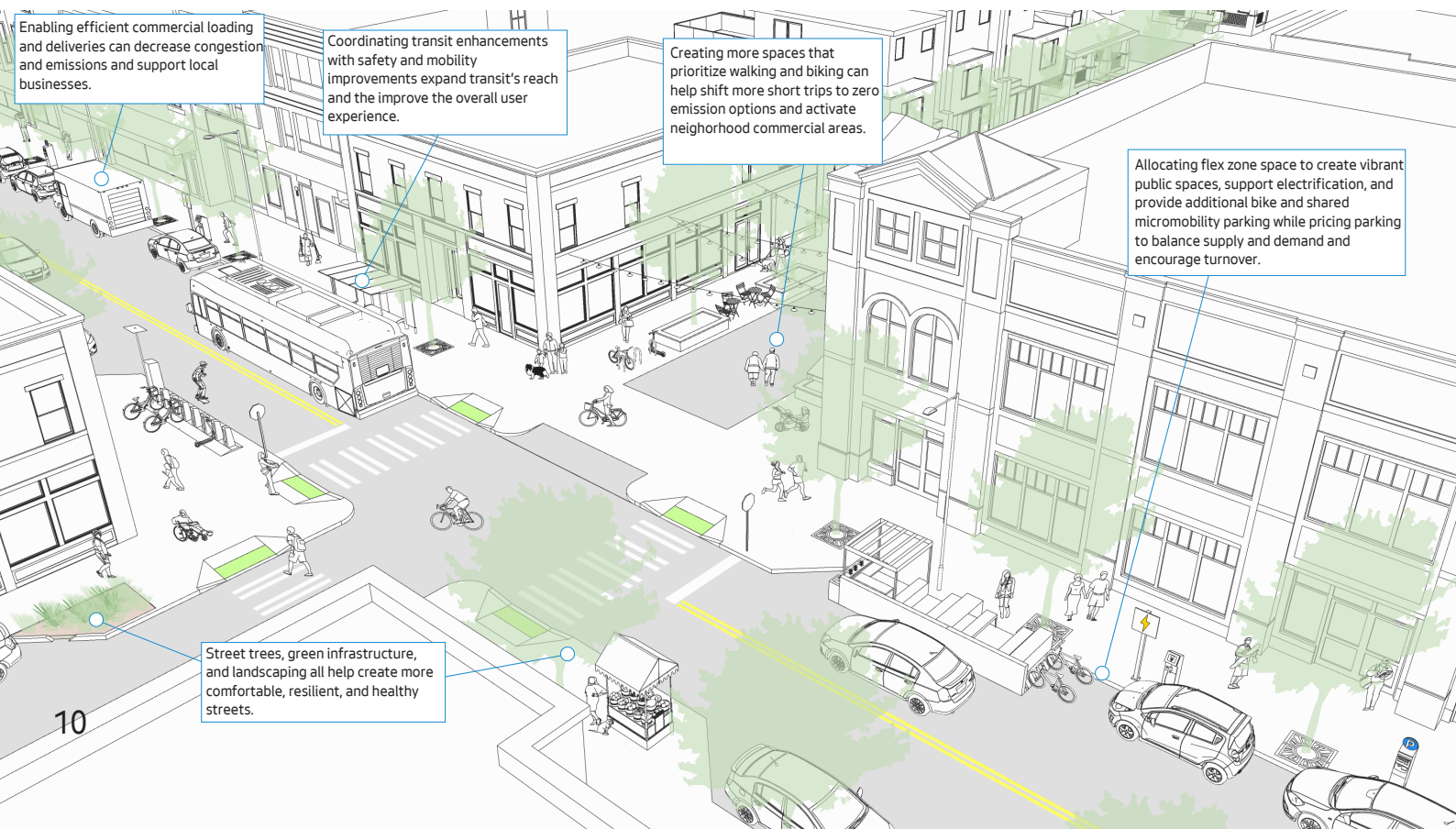
Health - Shifts to walking, biking, and active modes enable increased physical activity and health savings. Reductions in driving and increasing electrification reduce harmful air pollution.



Neighborhood Economic Benefits - By driving less, households reduce their transportation costs and have more money to support local businesses and economies. Investments in walking, biking, and transit increase foot traffic and street-level activity.

Co-benefits are based on the estimated reduction in vehicle miles traveled from CCRF strategies and quantified using the United States Department of Transportation's Benefit-Cost Analysis Guidance for Discretionary Grant Programs

Benefits at the Neighborhood Scale



Enabling efficient commercial loading and deliveries can decrease congestion and emissions and support local businesses.

Coordinating transit enhancements with safety and mobility improvements expand transit's reach and the improve the overall user experience.

Creating more spaces that prioritize walking and biking can help shift more short trips to zero emission options and activate neighborhood commercial areas.

Allocating flex zone space to create vibrant public spaces, support electrification, and provide additional bike and shared micromobility parking while pricing parking to balance supply and demand and encourage turnover.

Street trees, green infrastructure, and landscaping all help create more comfortable, resilient, and healthy streets.

The CCRF community benefits are organized in four categories. Each one is detailed further in Chapter 2.



Climate Justice

Climate justice means that the benefits of climate action are provided to people disproportionately impacted by climate change, while the burdens and responsibilities for addressing it are taken on by groups and communities who can more easily afford to do so.



Safer Streets

Climate response supports Vision Zero by creating a stronger and safer active transportation and transit network. Almost every intervention we can make that has a safety benefit has a climate benefit, and the nexus of climate and safety benefits comes from growing the share of trips made by climate-friendly travel options like walking, biking, and riding transit.



Healthier Communities

As we create more opportunities for people to build physical activity into their daily routines, everyone will be walking and rolling more often – especially for short trips. Concurrent health benefits will come from cleaner air and greener streets as emissions are reduced and we repurpose car-dominant spaces into more balanced, enjoyable streetscapes.



Thriving Economy

Investments that make it easier to walk, roll, or take transit can help our economy thrive, with more foot traffic that supports local business. Analyses of past transportation investments across the country indicate that a dollar invested in sustainable transportation projects creates significantly more jobs compared to a dollar spent on a road or highway project.

How Will We Deliver?

To implement the CCRF strategies, we must position our department for success. This includes building the support, capacity, and funding approach necessary to implement the CCRF and move toward our climate goals. To deliver the CCRF, we will:

- » **Lead and Inspire:** We will inspire and collaborate with agencies, cities, and peers across the region, country, and globe to demonstrate impact and support for climate action and the many community benefits it provides.
- » **Expand Capacity to Deliver Climate Action:** We will position our department to more effectively advance programs, policies, and investments that mitigate climate impacts and advance climate justice. This includes climate-focused leadership at all levels within the department and the staff and resources to implement the CCRF strategies.
- » **Expedite Project Delivery:** We will restructure our processes and priorities so we can take action and make an impact quickly - becoming more nimble, responsive, and streamlined, with an equity-forward approach.
- » **Advocate for Necessary Legislation:** We will advocate for legislative changes at all levels of government to implement certain CCRF strategies.
- » **Inform a Funding Approach:** We will rethink our funding strategies, especially as we work with communities across the city to develop an equitable long-term funding approach to holistically address transportation needs.
- » **Measure and Report:** We will consistently measure the progress we're making toward our climate goals and transparently report on our progress. Testing out strategies and evaluating our progress will help us maximize the efficiency and benefits of our climate change response.



Source: SDOT's Flickr