

VICTOR STEINBRUECK PARK RENOVATION

PPMHC: Draft Schematic Design 11/09/16



WALKER MACY

PROCESS

Conceptual Design (options)

Design Review Meeting 1:	July	Play, Furnishings
Design Review Meeting 2:	August	Connectivity, Gathering
Design Review Meeting 3:	September	Native American Culture, Lighting
Public Open House 2, Online Survey, and POEL Outreach:		October

Schematic Design

DRC Meeting 4 Draft Schematic Design	November 2, 2016
PPMHC Draft Schematic Design	November 16, 2016
Final Schematic Design to SP&R	December 2016
Public Open House 3:	Early 2017

PUBLIC OUTREACH

*“Thank you for taking on this very important project!
It will be exciting to see this place tuned up...Every square foot
should be **joyful** and encourage density and **happiness.**”*



PROJECT SCOPE



Our Goals for this Project:

A space that feels welcoming, safe and comfortable for all:
*children, elderly, residents, visitors, disabled, and disadvantaged
members of our community*

A park that remains a vital extension of the Market

Lasting durability and quality

Honor the guidelines and the original design intent

SITE PLAN



NORTH END



Pike Place Market Historical Commission - DRAFT Schematic Design 11/09/16

ORIGINAL DESIGN

1982



- council circle
- cherry tree climbing log
- natural boulder
- planting and trees



berms

photo by Dave Jacobs

OVERVIEW

Our Goals:

Restore Original Design Intent and Character:

- Create a play area or opportunity for play
- Adhere to original character of play area - a kid-sized gathering space with natural elements

Accommodate Recent Park Additions:

- “Tree of Life” sculpture will remain

Design for the Replacement of Missing Historic Features

When an entire feature is missing, the landscape's historic character is diminished. Although accepting the loss is one possibility, where an important feature is missing, its replacement is always recommended...

A second course of action for the replacement feature is a **new design that is compatible with the remaining character-defining features of the historic landscape**. The new design should always take into account the spatial organization and land patterns, features, and materials of the cultural landscape itself and, most importantly, should be clearly differentiated so that a false historical appearance is not created.

Dept. of the Interior Guidelines for Rehabilitation of Cultural Landscapes
<https://www.nps.gov/tps/standards/four-treatments/landscape-guidelines/rehab/index.htm>

“Please take this opportunity to create a space that is kid-friendly. Studies show that places that are safe for kids and families feel safe for everyone.”

“Children bring life to a space”.











View to Olympics
Removed from park activity

Large and bare
Loud
Not distinct
Not well used



benches



stools



tables

FURNISHINGS

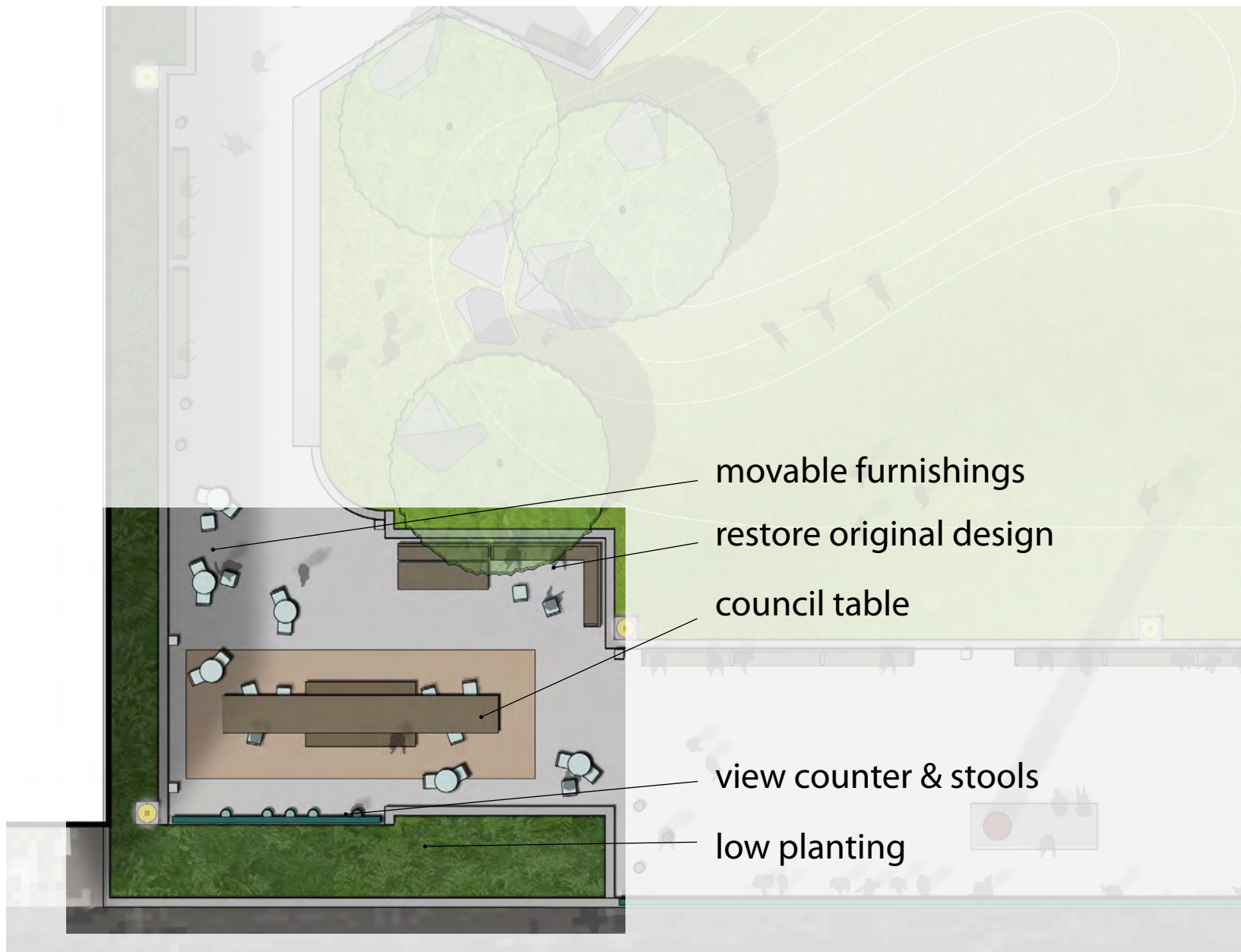
Our Goals:

Reinforce Original Design Intent and Character:

- Maintain solid, simple, utilitarian design with natural wood
- Maximize eating, socializing, and viewing opportunities

Incorporate Current Best Practices:

- Increase comfort and ease of use
- Meet accessibility guidelines
- Improve durability
- Improve flexibility



movable furnishings

restore original design

council table

view counter & stools

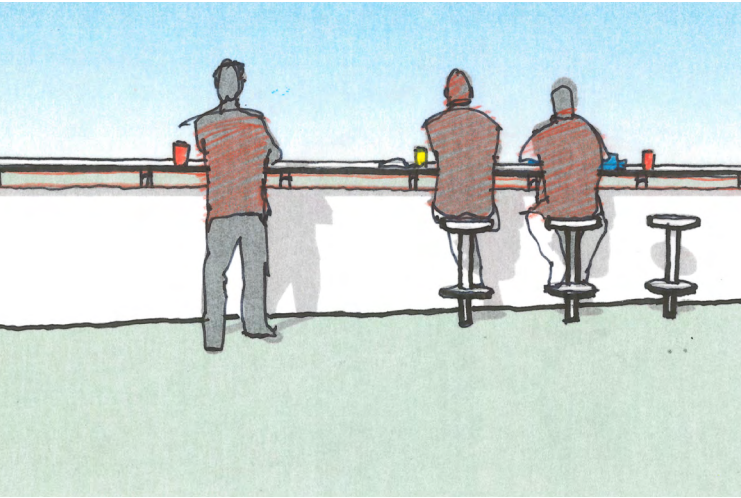
low planting

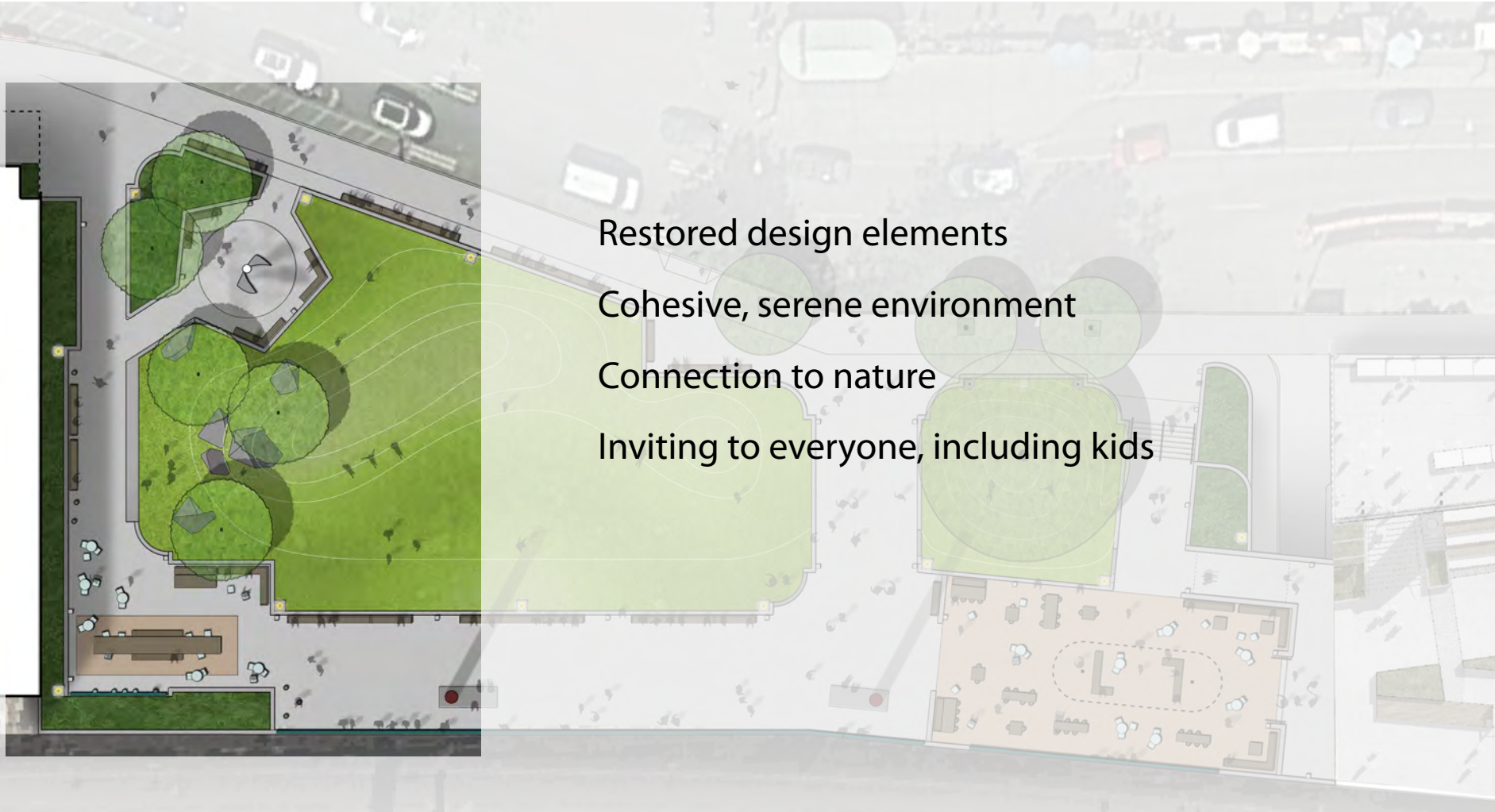


COUNCIL TABLE



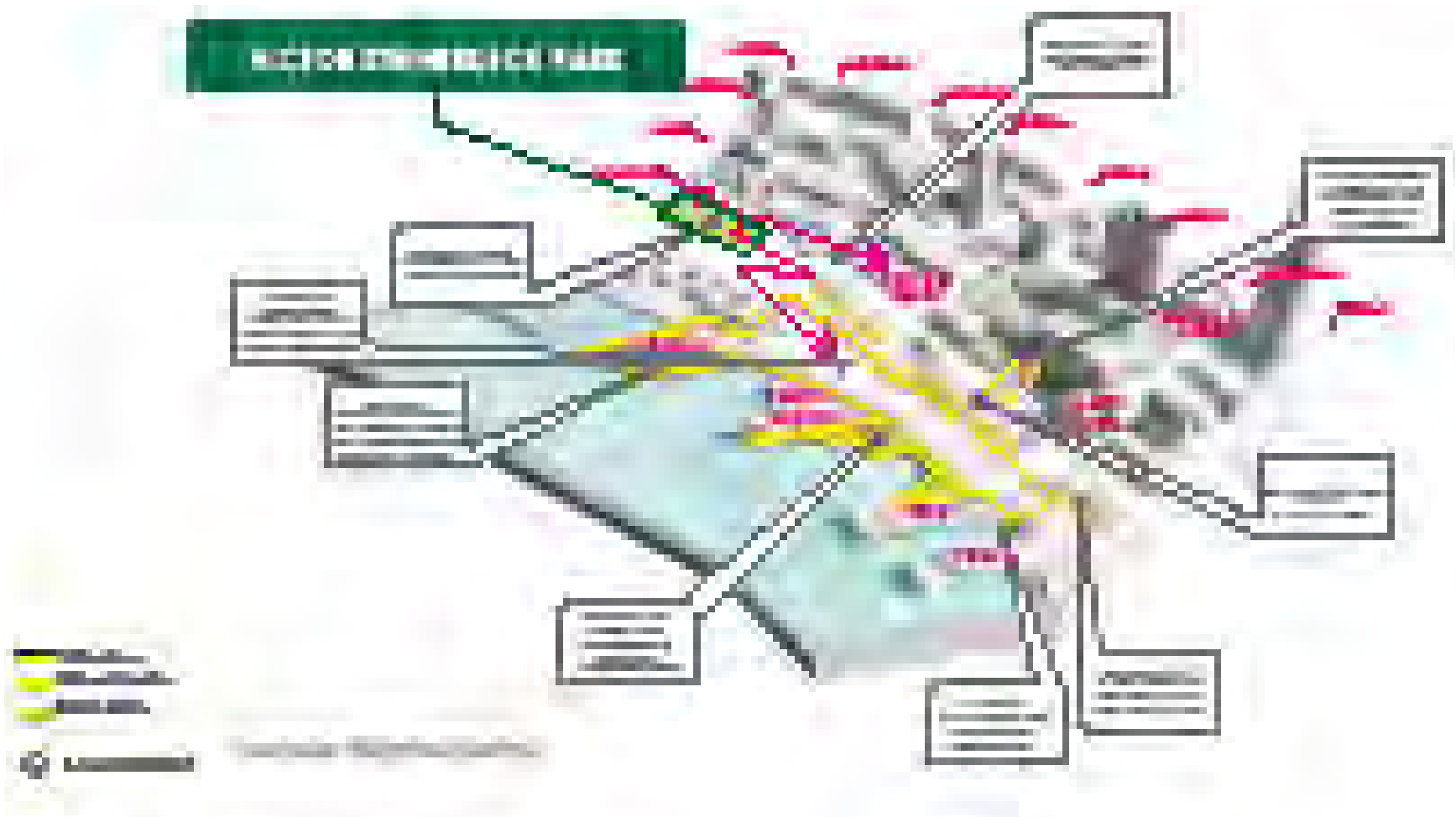
VIEW COUNTER





Restored design elements
Cohesive, serene environment
Connection to nature
Inviting to everyone, including kids

SOUTH END







“The park should be open to all and joyously celebrate its connection to Pike Place Market. It should be a safe, vibrant, and welcoming place.”

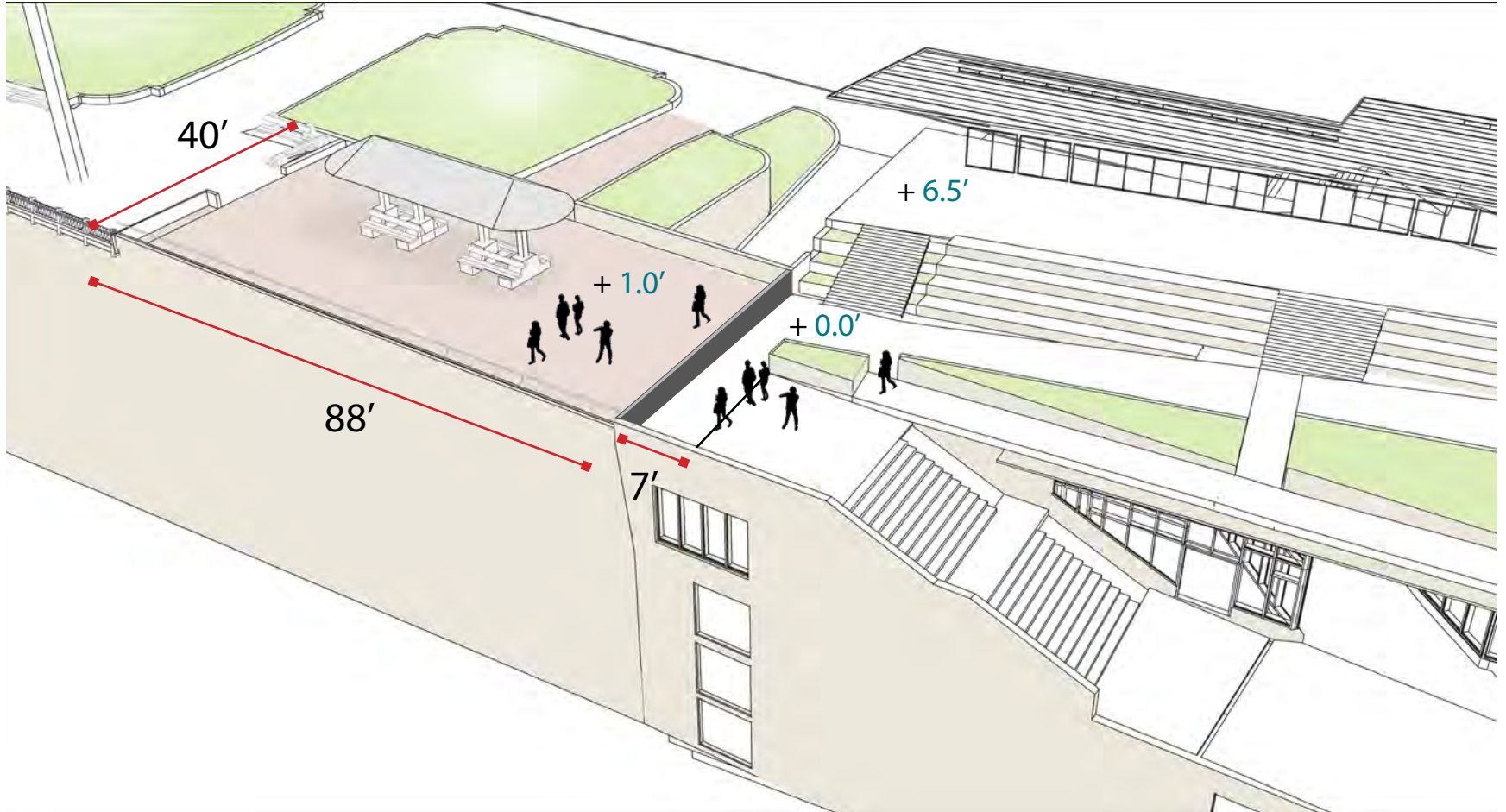


SIGNIFICANCE OF MARKETFRONT CONNECTION

How would a connection support the ideals of the park as it was conceived and as it works today?

- Victor Steinbrueck expressed concern that the park was “off to the side” ...in relative isolation from the market at the time
- Growth has placed greater demand and intensity of use on public open space
- Public communities between the Park and Market Front should not be segregated
- The park as a gathering place is strengthened with better access, connectivity

EXISTING CONDITION



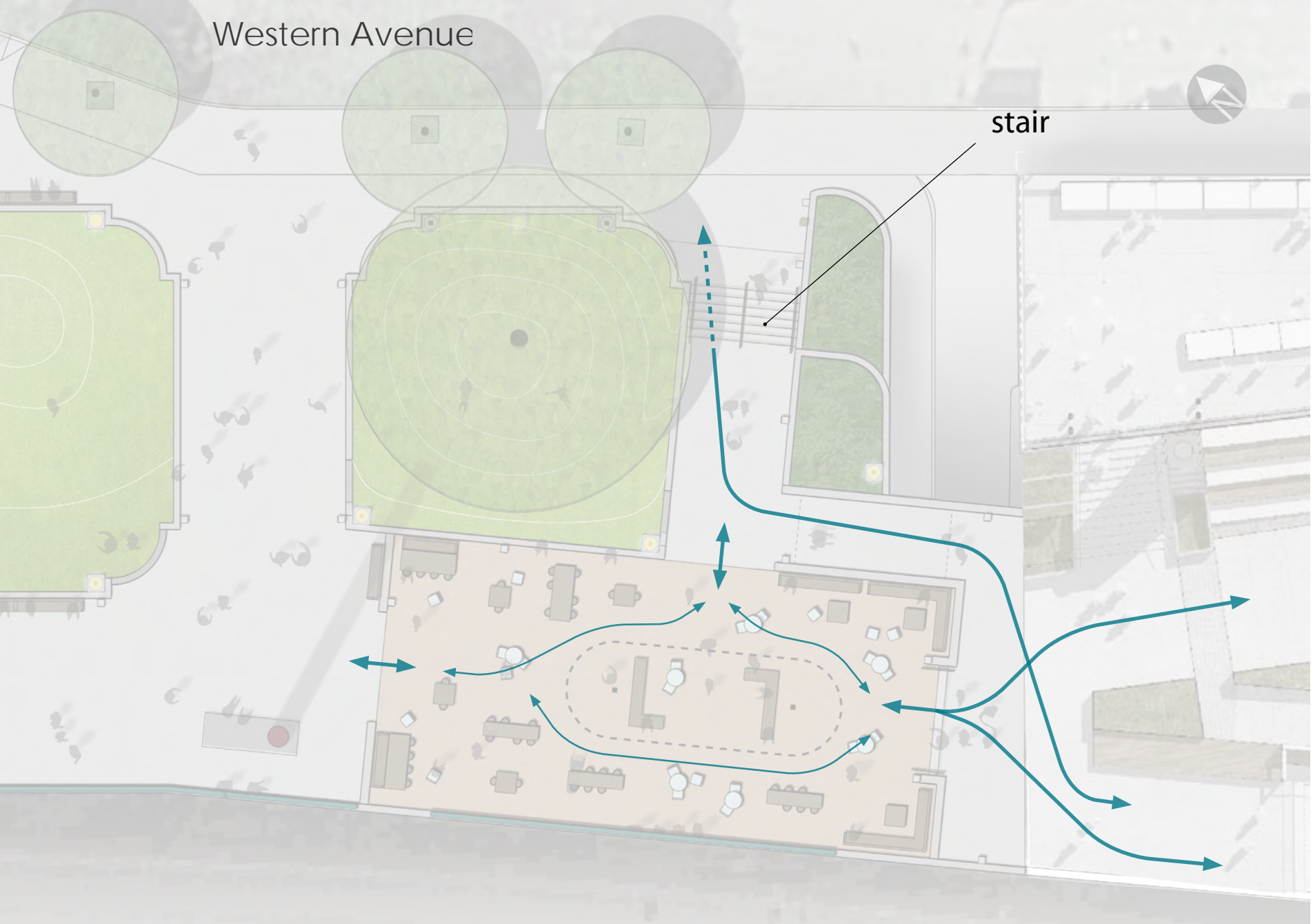
PROPOSED DESIGN



Western Avenue



stair







PERGOLA

Existing condition



EXISTING IMAGES



- new structure
- open views
- two columns
- sturdy edge
- rainwater collection
- 6" - 2' taller

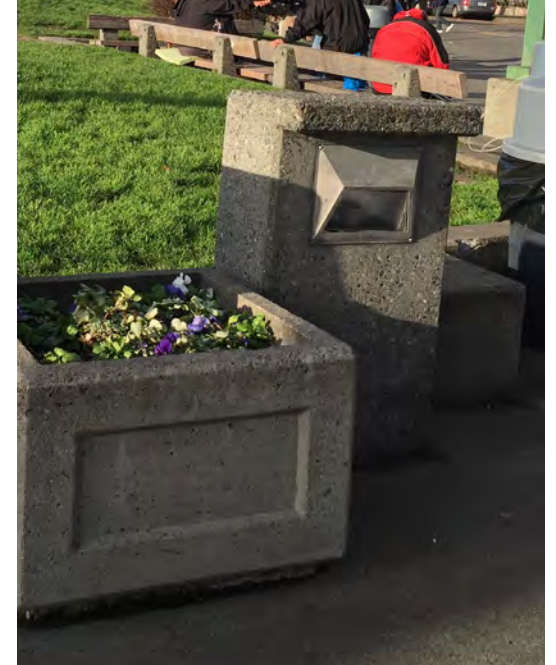




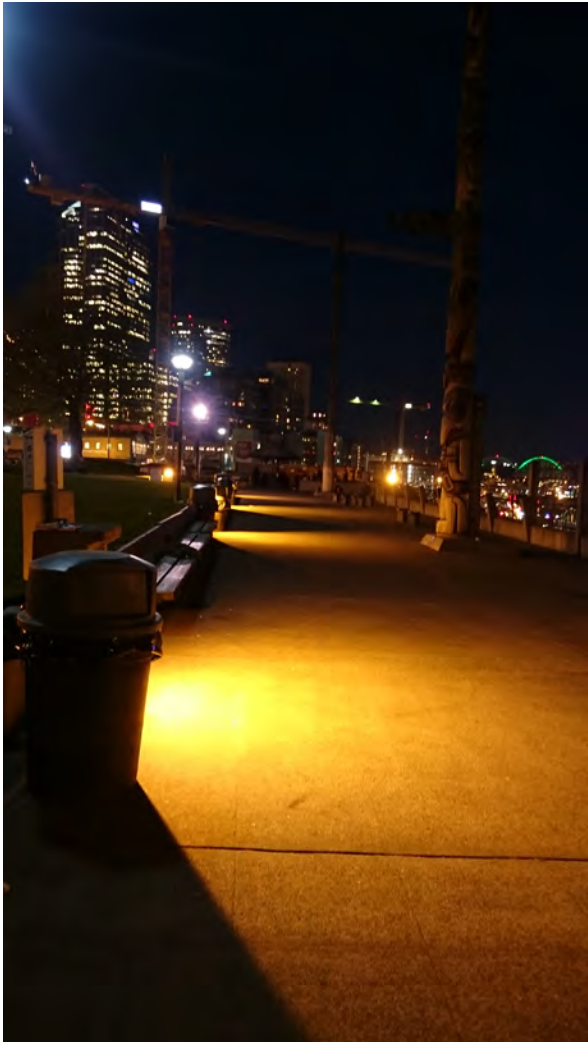
LIGHTING



Pole Light

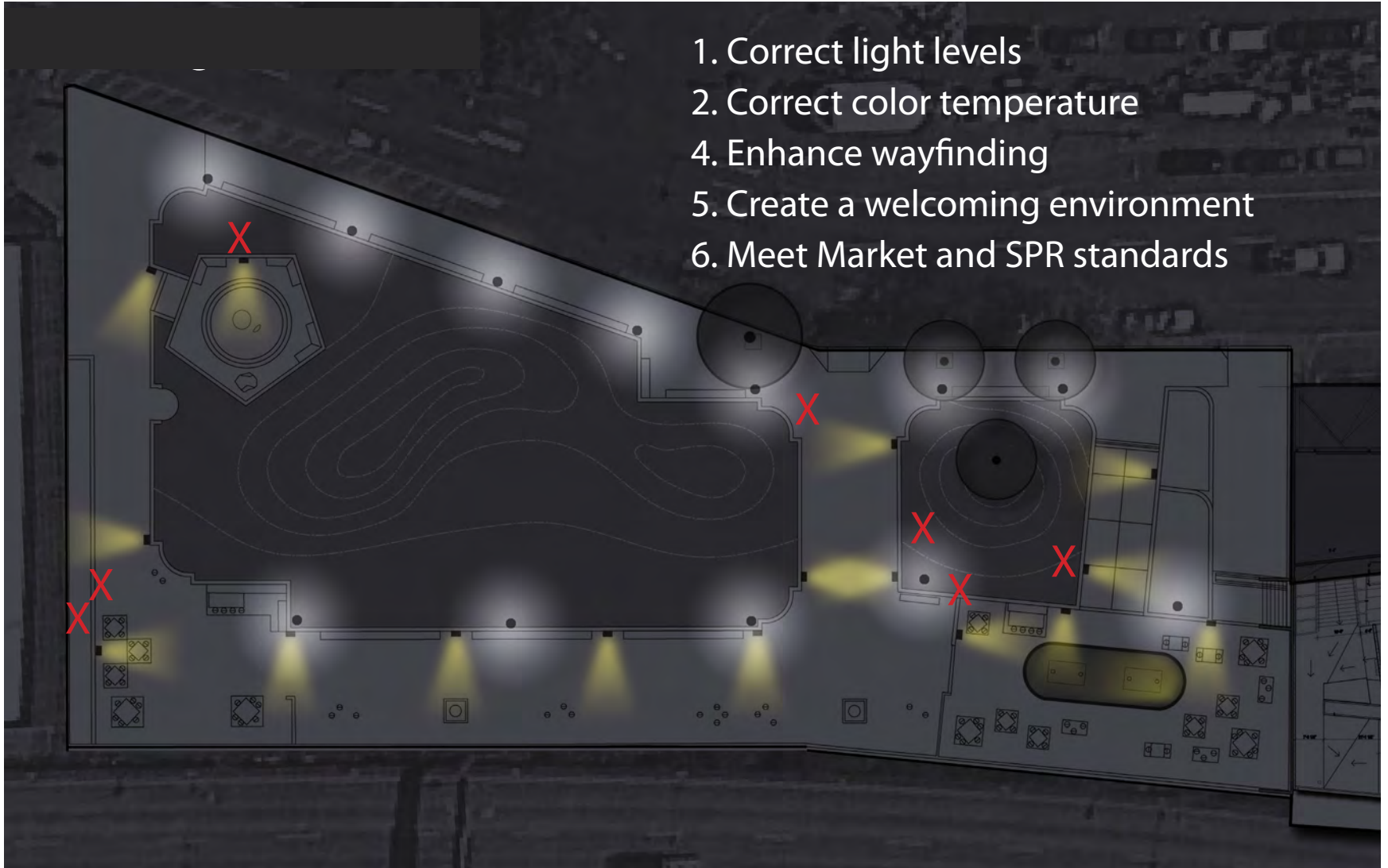


Bollard Light



EXISTING LIGHTING

1. Correct light levels
2. Correct color temperature
3. Enhance wayfinding
4. Enhance wayfinding
5. Create a welcoming environment
6. Meet Market and SPR standards



LIGHTING



"D"

existing



"B+"

proposed

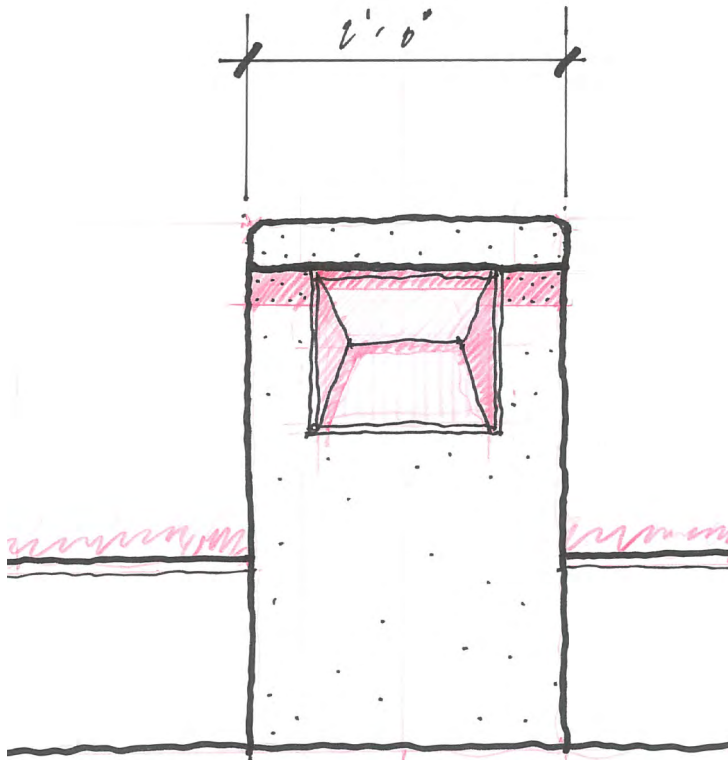


"A"

alt. proposed

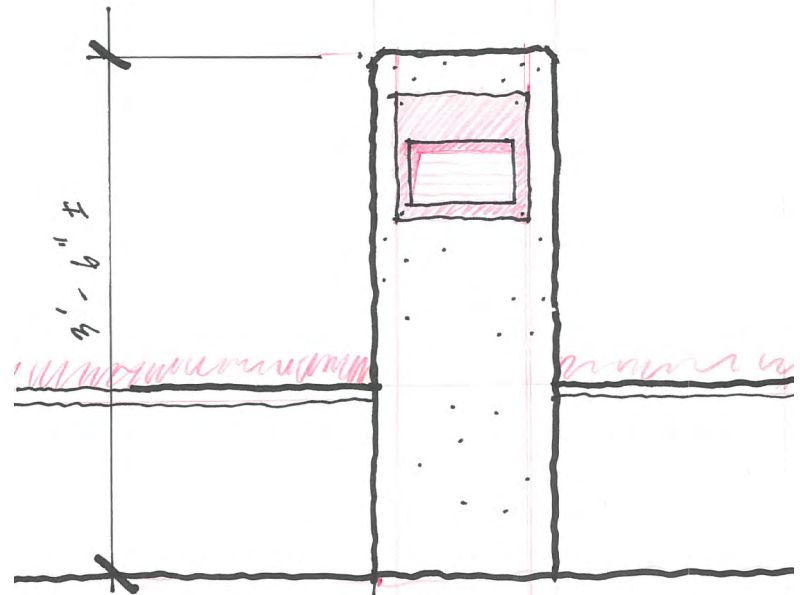
match poles to existing

LIGHTING



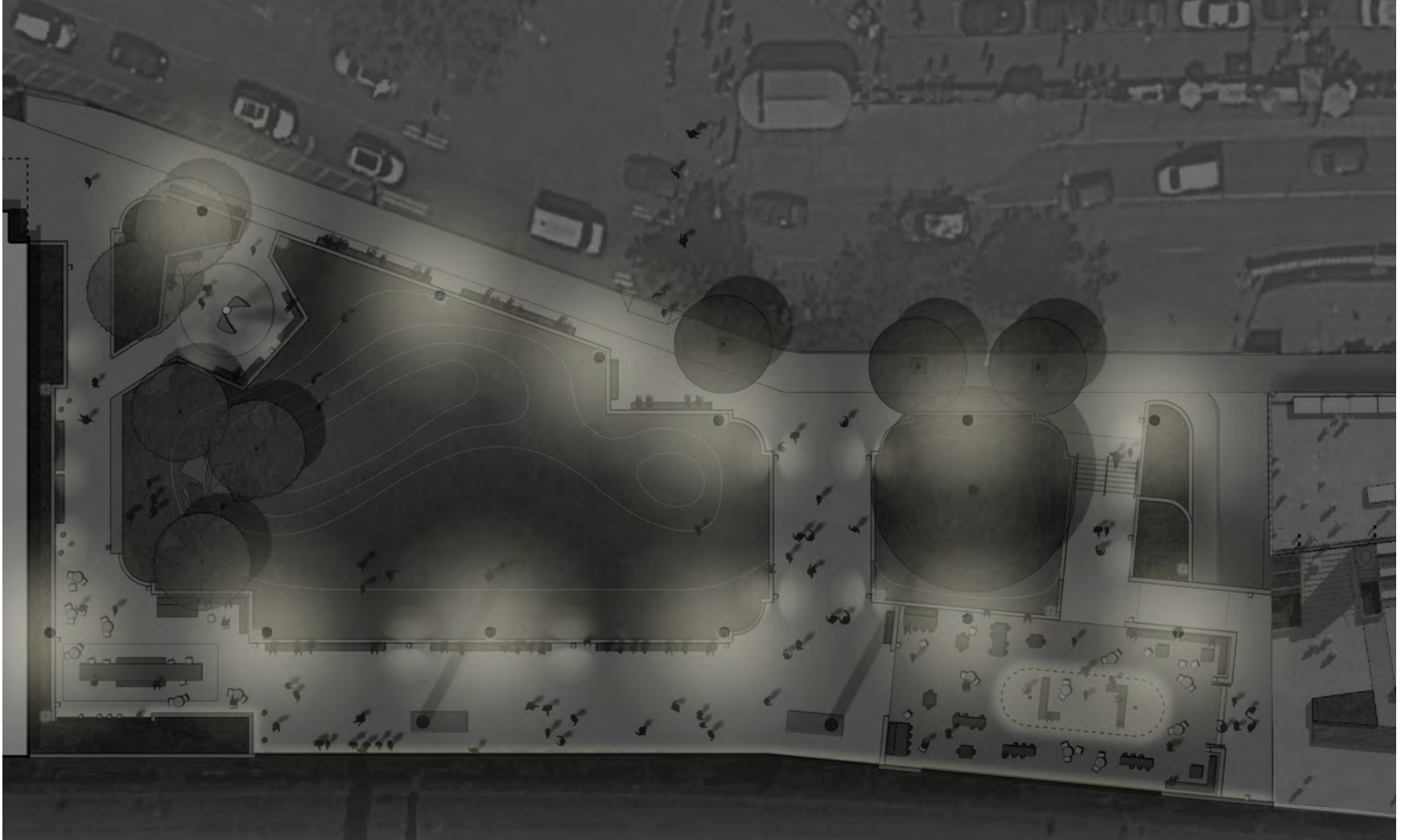
EXISTING BOARD

existing



proposed

PROPOSED LIGHTING



OTHER REFINEMENTS

OTHER REFINEMENTS



LAWN ACCESS

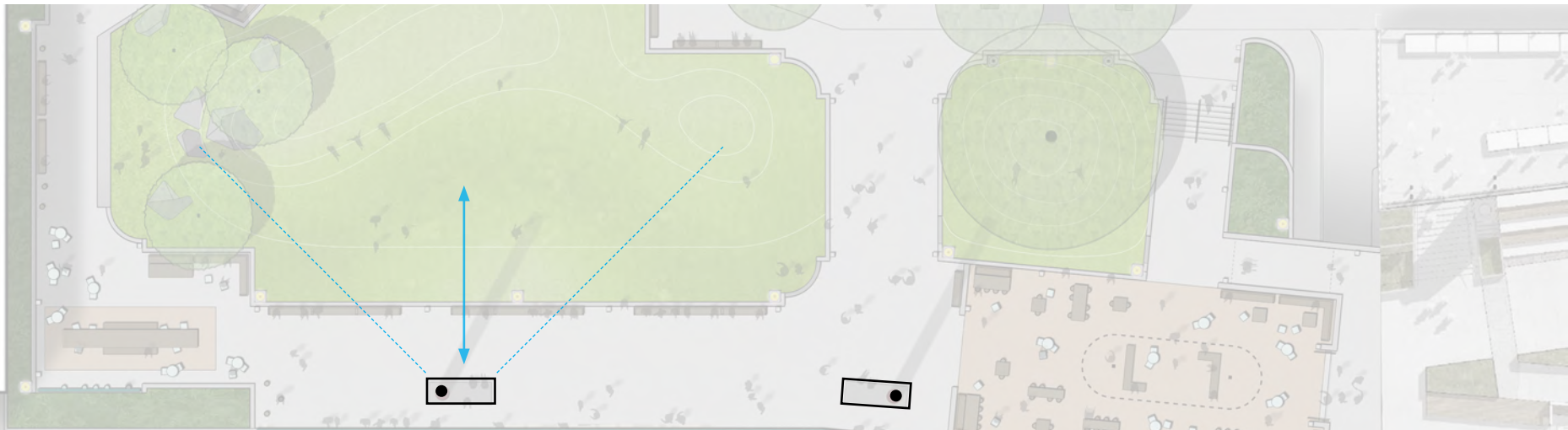


PEDESTALS



Larger base at totem poles

- small performances/ speeches
- seating



NATIVE AMERICAN CULTURAL ELEMENTS

NATIVE AMERICAN CULTURAL ELEMENTS

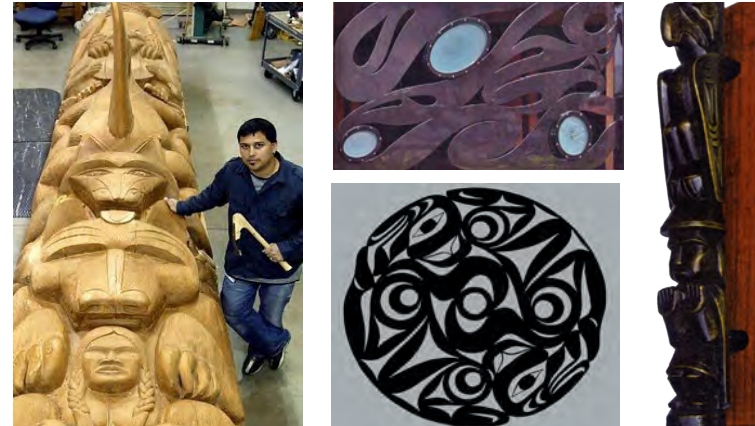
“This is a fantastic place to honor both our Native American history and the many tribes who live on this land today.”

*Victor Steinbrueck Park has established itself as Native Park. Let's add to that and pull it into this century, with **new energy and life** and **authentic respect**.*

Designs, patterns, and natural materials



Art




Language



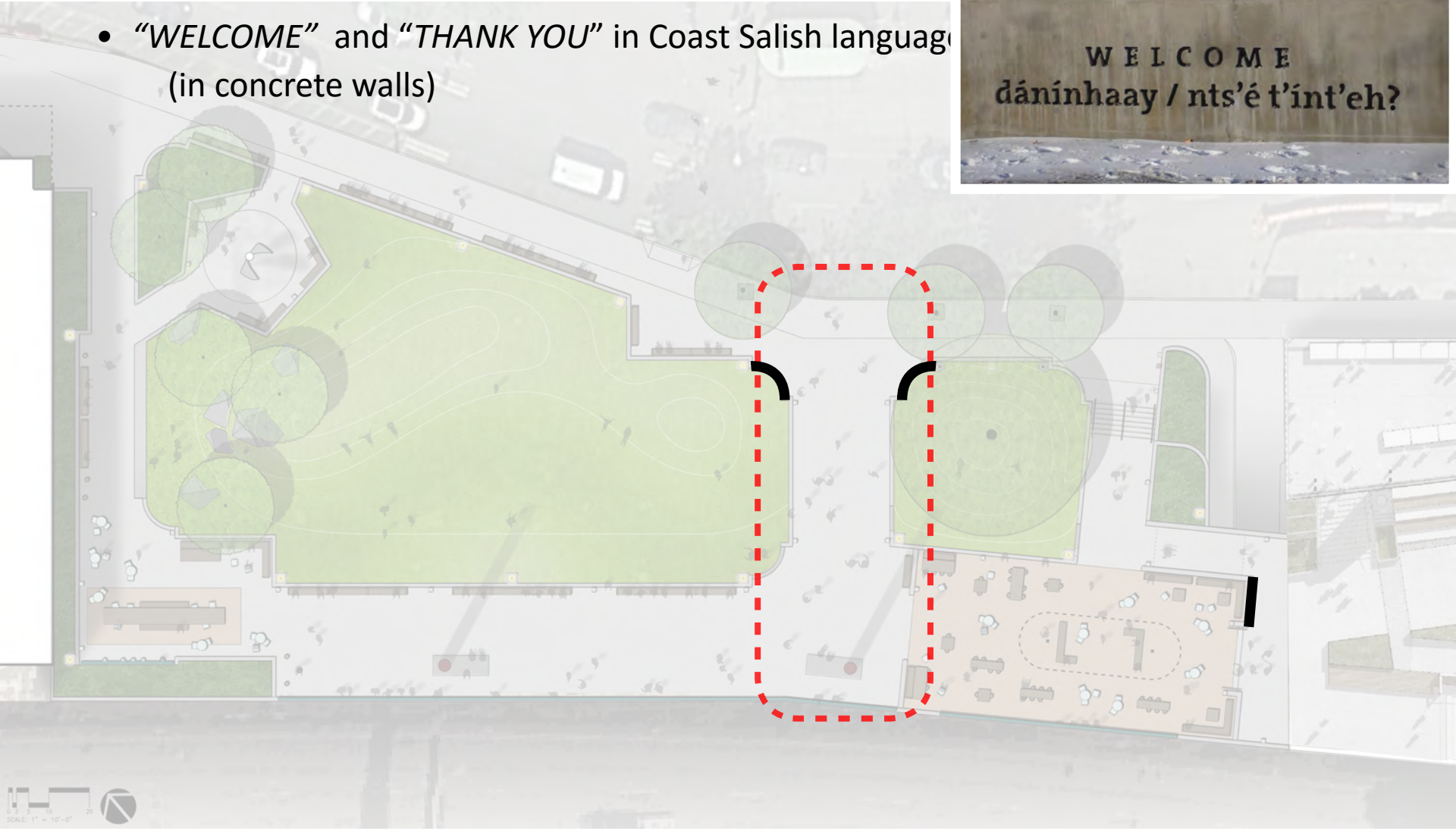
Story telling



An aerial schematic design of the Pike Place Market area. The design features a large green lawn on the left with winding paths and several trees. To the right is a large circular green area with concentric circles, and below it is a brown building footprint with interior furniture. A red dashed box highlights a central area between the lawn and the circular area. The background is a faded aerial photograph of the actual market street with cars and buildings.

Welcome & Orientation

- “WELCOME” and “THANK YOU” in Coast Salish language (in concrete walls)



- Switch pole locations: move Coast Style to entry path
- Interpretive text that tells the story and meaning of the Victor Steinbrueck Park Poles (integrated into new guardrail top)



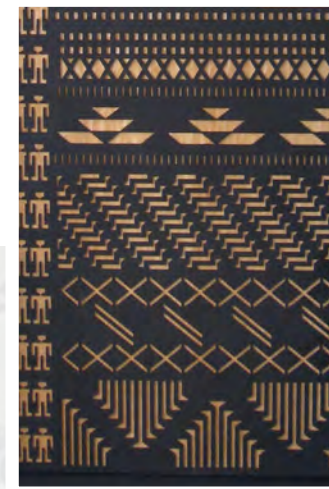
Farmer

Coast Style

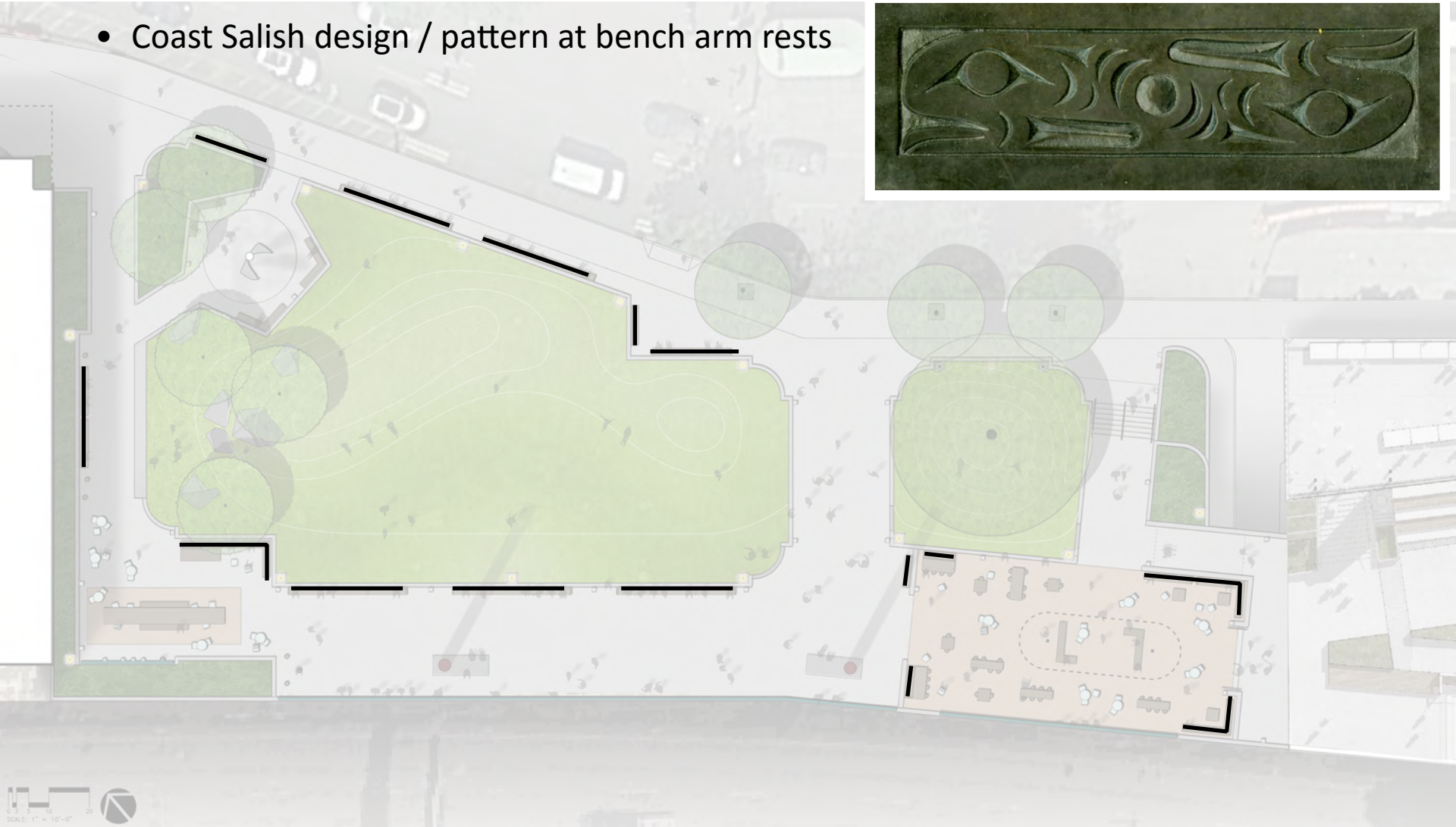
- Puget Sound Map of Coast Salish Peoples (integrated into new base)



- Coast Salish design / pattern at pergola columns



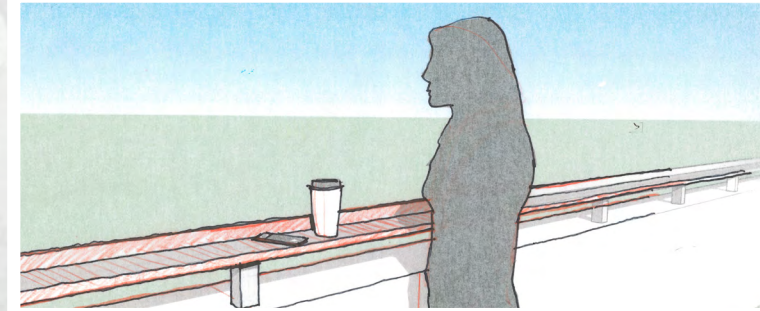
- Coast Salish design / pattern at bench arm rests



Tempered By Memory

Tempered By Memory honors those who lost and risked their lives in the events of September 11, 2001. It was made possible by hundreds of individuals, businesses, and organizations from the Saratoga region and beyond.

Overwhelmed by their numbers, Alexandria could offer little aid to the newly arrived Contrabands. Some took up residence in temporary barracks created near the site of



- Contemplative text: Chief Sealth sayings, poetry, Seattle Native quotes (integrated into new guardrail top)

“The earth does not belong to us. We belong to the earth.”

“At night when the streets of your cities and villages are silent and you think them deserted, they will throng with the returning hosts that once filled them and still love this beautiful land.”

DISCUSSION

