

OVERVIEW

We are improving Victor Steinbrueck Park to preserve its legacy and significance.

Victor Steinbrueck Park was created in 1981 by architect and activist Victor Steinbrueck and landscape architect Rich Haag. After helping to save Pike Place Market from demolition, the two designed the park (originally named Market Park) as a place to enjoy the view and to act as an extension of Market's social life, providing a place to gather outside. The park designers felt strongly that the park provide for all people, including disadvantaged members of our community.

Victor Steinbrueck Park is an incredibly well-used and well-loved space, and over the years it has seen the effects of overuse and general wear and tear. Various elements have also been added or removed from the park over time.

This project will take a holistic approach to improving the park for all.



GOALS

In 2008, City Council passed a Levy that allocated \$1.6M for "Improvements to Public Safety". These include but are not limited to:

- improving sight lines into the park
- renovating seating
- renovating the former children's play area*
- improving and expanding lighting
- upgrading landscaping

The park is within the Pike Place Market Historic District; the Pike Place Market Historical Commission has adopted guidelines which outline the "character defining features" of the park. These guidelines must be considered as part of any park improvements.

*Note: Since this levy was passed, the former children's play area was replaced by a gathering space and Tree of Life sculpture.

SCOPE

The scope of this project includes public outreach, design, and construction related to improvements outlined above. In addition, the park was constructed on top of a parking garage, and it has recently been determined that the waterproofing membrane between the park and garage is failing. The replacement of the membrane will require that the entire park be removed and reconstructed. While \$1.6M will cover park improvements described in the Levy language, additional money will be required to cover the membrane replacement and reconstruction of the park.

PROCESS

The design team meets regularly with numerous local stakeholders and park users. The design team also meets regularly with Seattle Parks & Recreation and the Pike Place Market Historical Commission, which is responsible for making decisions on all use and design changes in the Market to ensure that the historic character of the Market is preserved. The Seattle City Council must approve the final design pursuant to the levy language.

Public outreach includes three open houses, the first of which occurred on May 17, 2016 and the second of which occurred on Oct. 4, 2016. The design team may also hold on-site events to solicit input from park users.

We are in the early stages of what is expected to be a multi-year design and construction process.

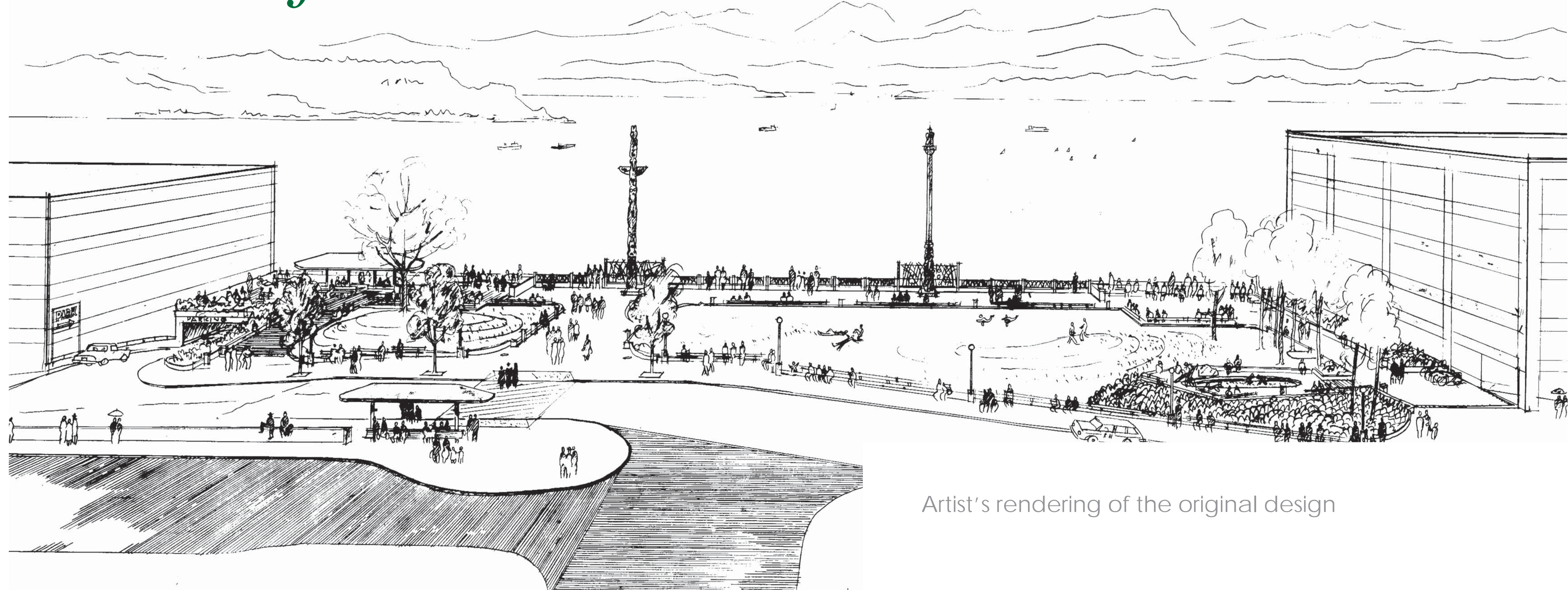
ORIGINAL DESIGN

The park is an extension of the Market and lively public space with a tranquil view of the Sound and mountains.

The park was designed with two simple goals in mind:

- It provides a “belvedere” to enjoy the view of the water and the mountains
- It is an extension of the Market, a place for people from all walks of life to congregate outside.

This renovation project is not proposing a wholesale redesign of the park. Instead, improvements will be made that preserve the original design intent and use of the park while acknowledging the significant change in context since the park was constructed. Accommodations will also be made for the needs of the Seattle community in 2016.



Artist's rendering of the original design

LEGEND

A Park paths were laid out to lead visitors out to the “belvedere” and the view over the water.

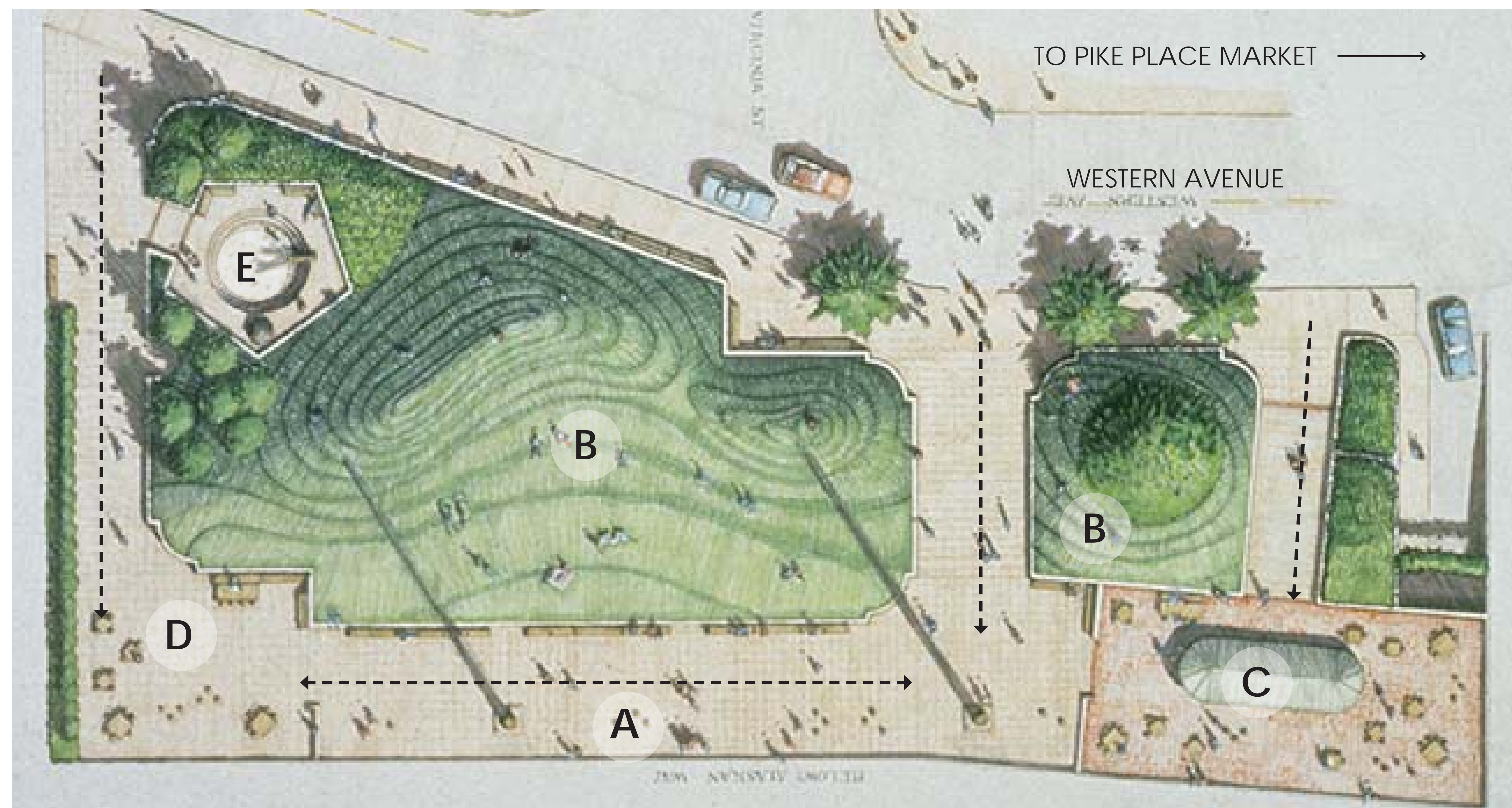
B The mounded lawns shelter the park from the street and create informal green gathering space with a fantastic view.

Three “outdoor rooms” were created as small gathering areas set slightly apart from the rest of the park:

C The pergola and picnic area in the southwest corner

D The picnic area in the northwest corner

E The children’s play area, which is now the site of the Tree of Life sculpture and gathering space.

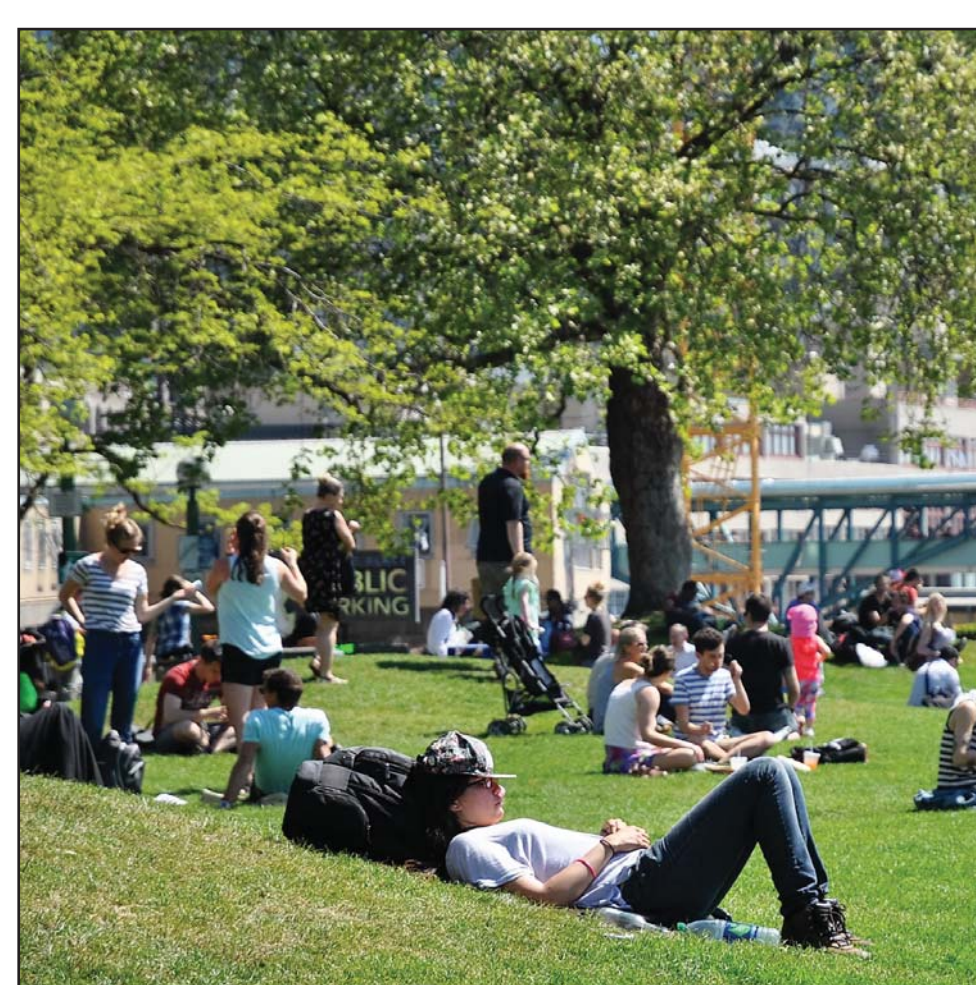


Original site plan (labels not original)

A Belvedere



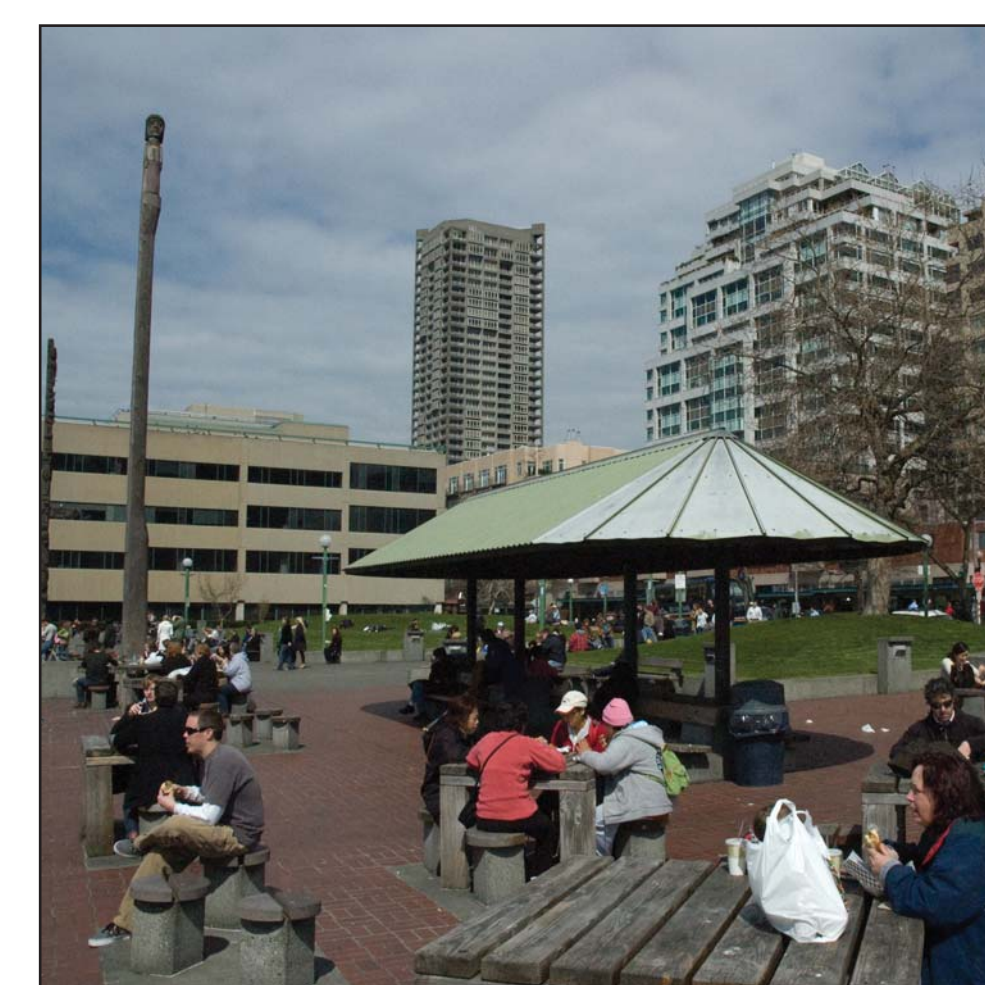
B Lawns



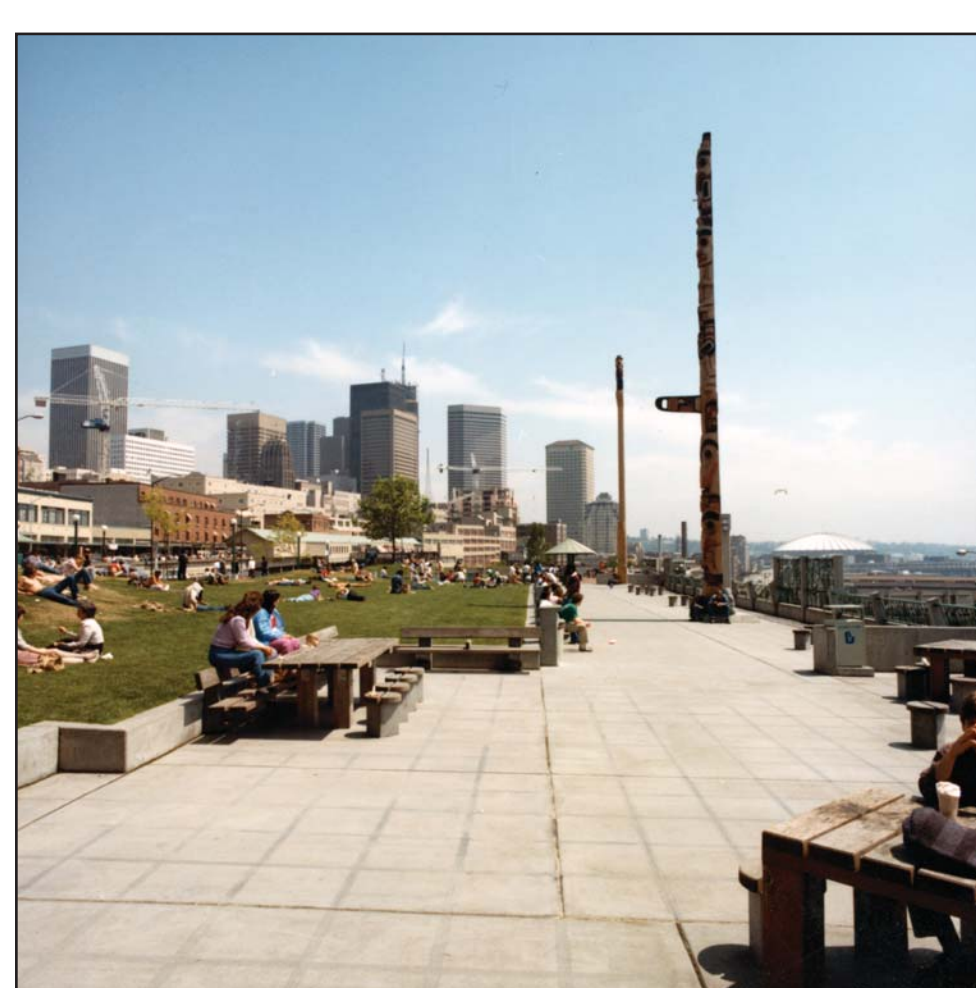
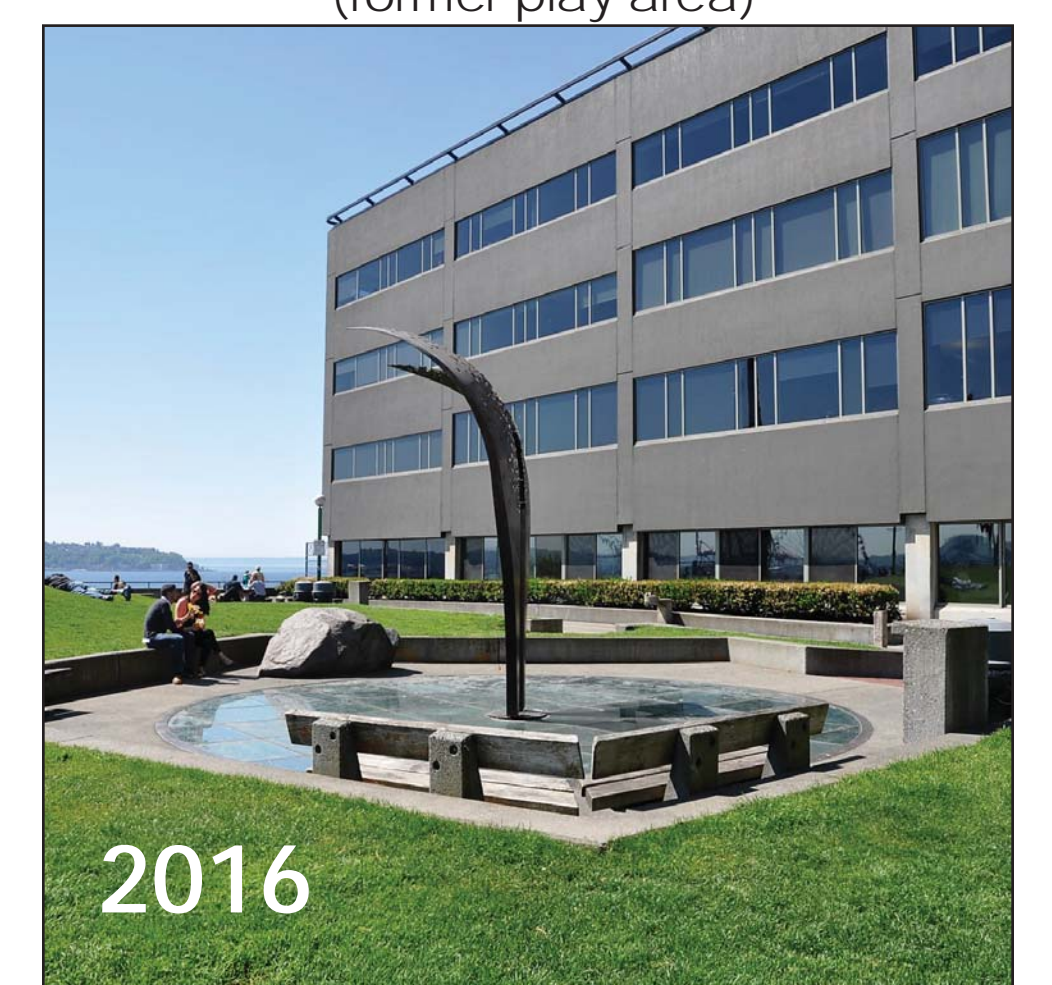
C Picnic Area



D Picnic Area



E Tree of Life Sculpture
(former play area)



OUTREACH

The design team and Seattle Parks Department have engaged in many months of outreach to park users, local stakeholders, the surrounding community, and the general public. We have also engaged in conversations with Richard Haag and others who were involved in the original park design, the Pike Place Market Historical Commission, Design Review Committee, MarketFront Committee and Pike Place Market PDA. The results of our initial public outreach efforts are presented below and on the following pages.

Open House Series 1

open house



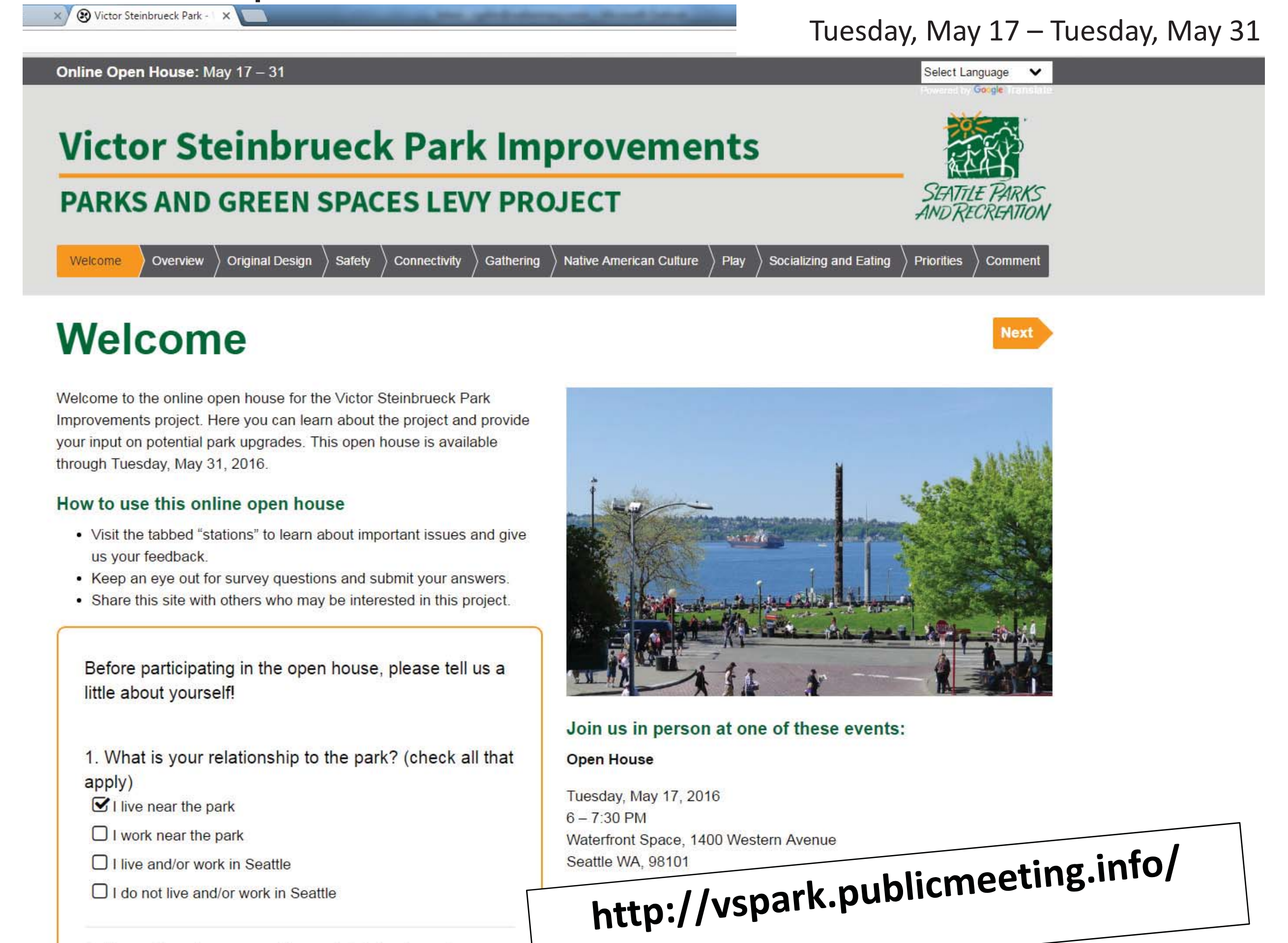
May 17th 2016

pop up event



May 19th 2016

online open house



May 17th - 31st

WHAT WE HEARD:

- Many people say that the park does not always feel welcoming, and agree that improvements to park materials and durability, lighting, and general maintenance are needed.
- Many people wanted to preserve the simple, green character of the park and emphasized the importance of views.
- Some people saw the possibility for greater change to the park design. Design changes and modifications must be approved by the Pike Place Market Historical Commission.

WE ASKED: What is most important to the park's legacy and future success?

Respondents were given 10 points to allocate to each of the topics shown to the right. The numbers represent combined feedback from the May open house, online survey and park pop-up event.

| MarketFront & Waterfront Connectivity | Gathering | Native American Culture | Play | Socializing |
|---------------------------------------|-----------|-------------------------|------|-------------|
| 441 | 203 | 237 | 198 | 253 |

The design team has incorporated this feedback into the renovation options proposed for the park.

OUTREACH

Public Open House 1 - May 2016

Project Overview and Key Issues for Success

- Public Open House May, 17th, 2016
- Online Open House May, 17th - May 31st, 2016
- Pop-Up Open House in the Park May, 19th, 2016

Public Open House 2 - October 2016

Design Updates and Options

- Public Open House October, 4th, 2016
- Online Open House September 30th - October 18, 2016

Public Open House 3 - Early 2017

Schematic Design

Other Outreach to Date

- Pike Place Market Historical Commission
- Pike Place Market PDA
- MarketFront
- Chief Seattle Club
- Seattle Urban Native Roundtable Meeting
- Market Merchants
- Women In Black
- West End Neighborhood Group
- Neighboring Condominiums
- Downtown Seattle Families
- Seattle Department of Planning and Development
- Seattle Police Department

PLAY

The original park design included a small play area with natural elements. It has since been replaced by the Tree of Life sculpture, which is dedicated to the lives of homeless men and women. The Tree of Life sculpture will remain. The design team is exploring options to integrate a play area, or improved opportunities for play, in this area of the park.

WE ASKED:

Should the renovation include a small play area for young kids?

yes
132

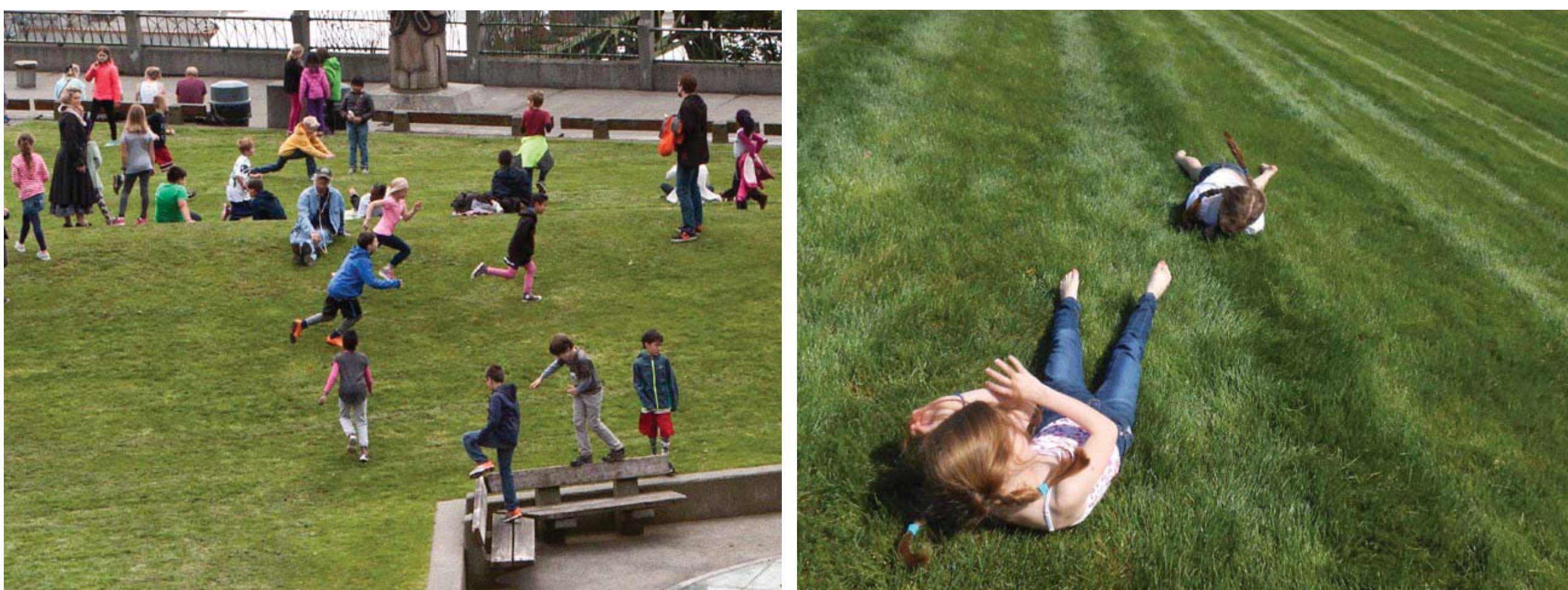
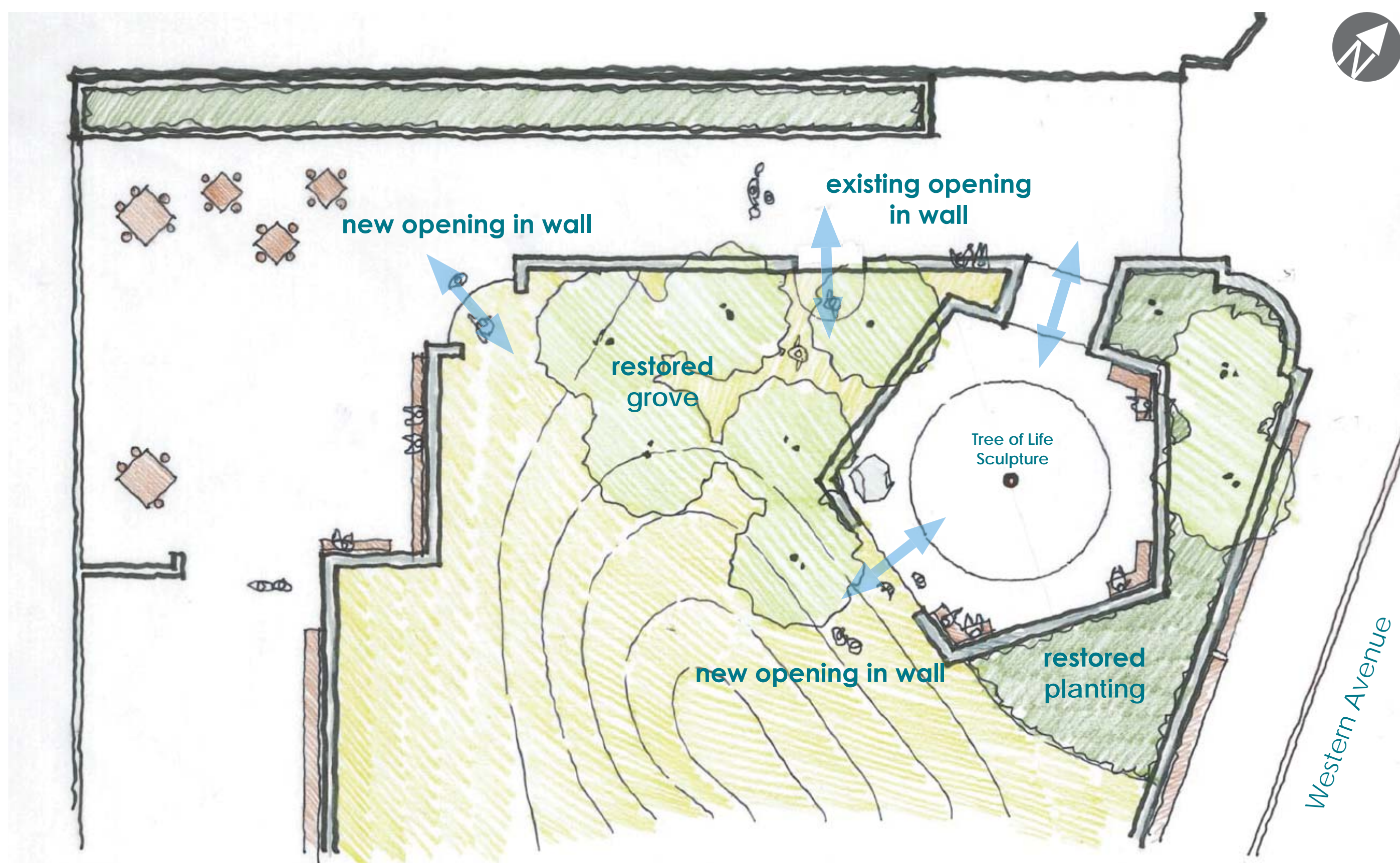
no
60

Many downtown families as well other park users would like the park to provide a place to play. Most respondents also recognized the fact that the park is small and is not an appropriate place for a very large playground.

Which option do you prefer?

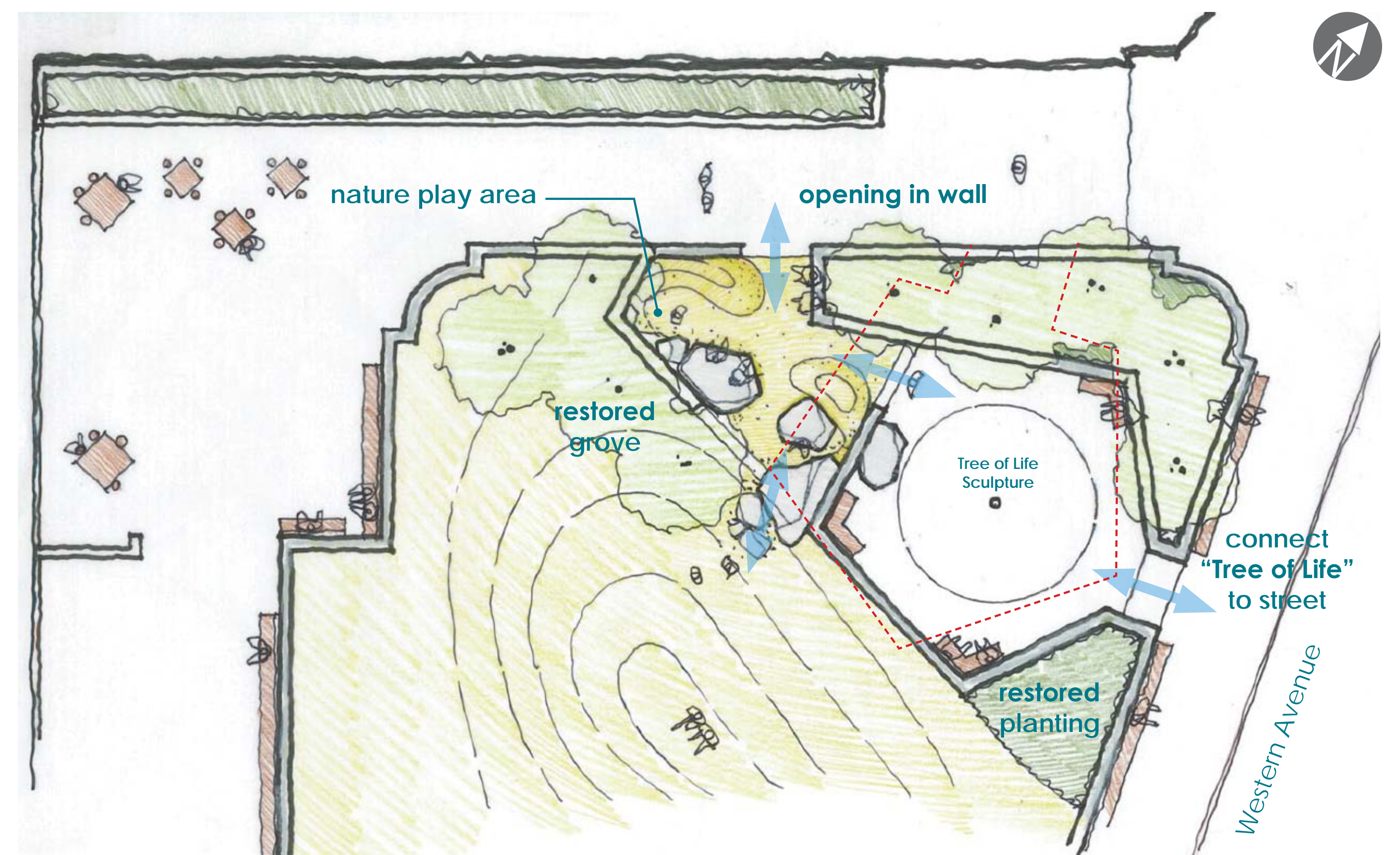
OPTION 1

This option restores the original grove of trees and provides easier access to the rolling lawn.



OPTION 2

This option restores the original grove of trees, provides easier access to the rolling lawn, and also integrates a small nature-inspired play area. The Tree of Life is shifted slightly south and could be connected to the sidewalk to invite more people in.



FURNISHINGS

We are exploring ways to maintain the simple, wood-based character of the original furniture while making it more comfortable, accessible, durable, and accommodating to groups of varying sizes. We are also interested in making the park's picnic and seating areas more flexible.

WE ASKED:

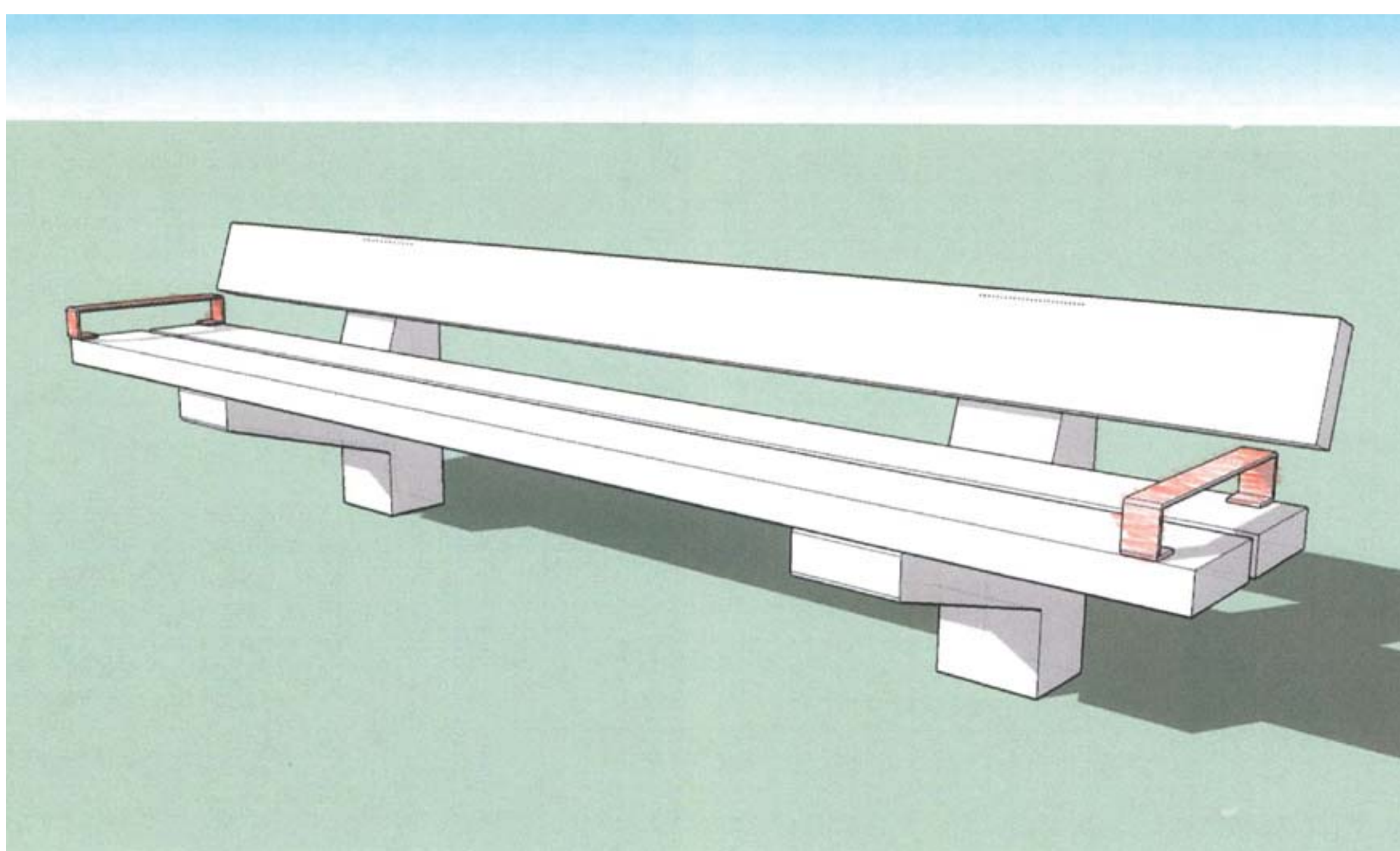
Should there be more types of furnishings for socializing and eating?

| yes | no |
|-----|----|
| 146 | 30 |

Although many people do not find the existing furnishings uncomfortable, many feel that the tables and stools are limiting, not flexible for different sizes of groups and gatherings, and below standard for a well-used public space. Most people feel there should be better options for eating and socializing in the park.

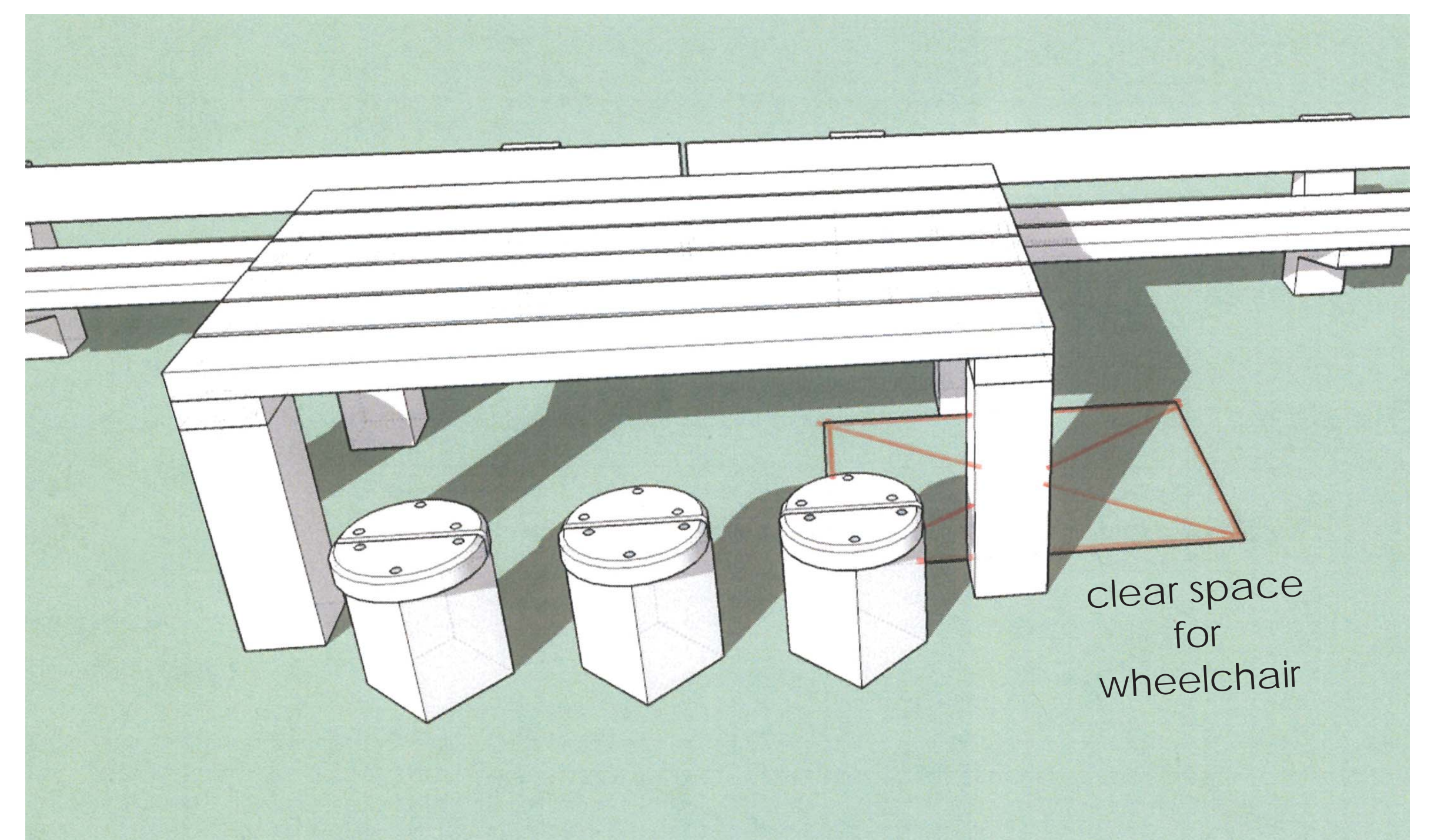
Ideas include:

benches: add arm rests to original design



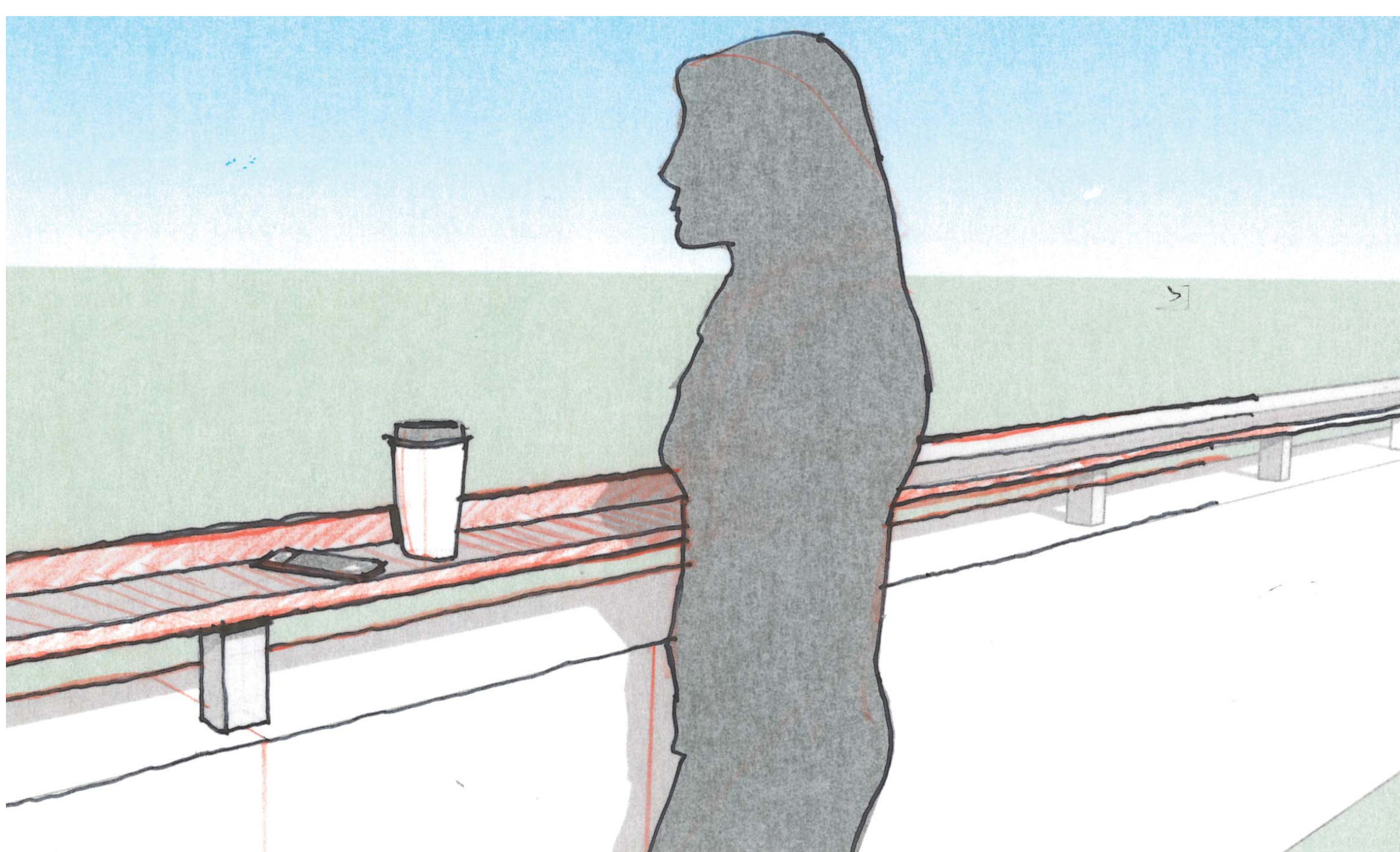
Arm rests will be added in discrete locations to make sitting down and getting up easier, and to meet ADA guidelines.

tables: add sizes, shapes, and configurations



Tables and seating may be provided in different sizes, shapes and configurations to allow for groups of different sizes. Stool bases will be designed so that they do not interfere with table legs or prohibit movement. Companion seating and clear spaces for wheelchairs will be provided throughout seating areas.

guardrails: refine the top rail of original design



A guardrail shelf will provide a casual place to stop and appreciate the view over coffee or lunch.

supplemental furnishings: add movable options

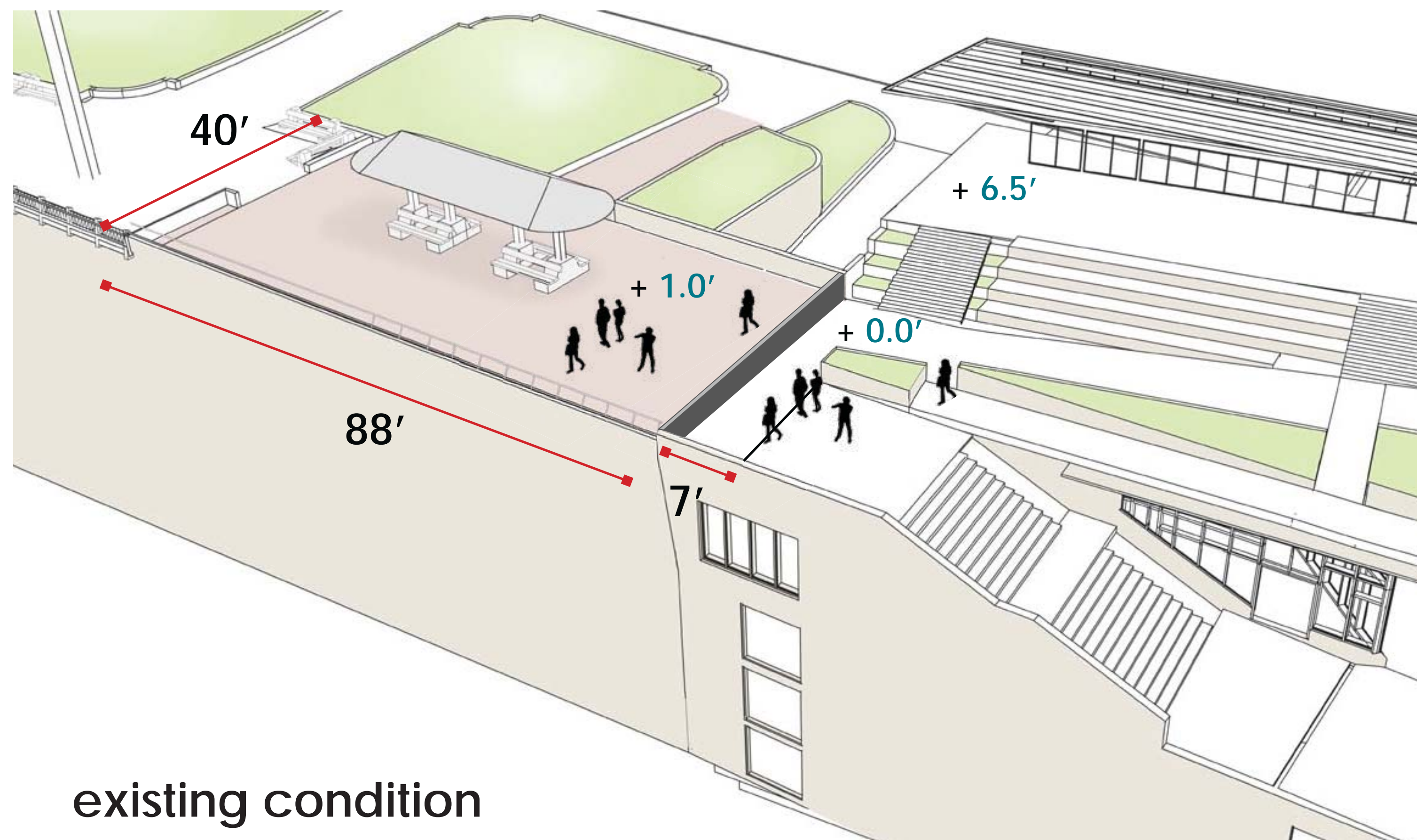


Movable tables and chairs allow people the freedom to choose where to sit: in the sun or shade, in small or large groups, by the action or by themselves. Existing capacity of fixed tables and chairs will not decrease; movable options are supplemental.

Please use your comment card to provide feedback

CONNECTION

The MarketFront project, currently in construction, includes a stair, landing and pathway directly south of Victor Steinbrueck Park. The stair will connect to the Waterfront, while the path above it will connect to the Desimone Bridge in the Market. If no changes were made to the park, a low wall would separate park users from MarketFront.



existing condition

WE ASKED:

Should the park renovation include a direct connection to MarketFront?

yes
179

no
9

There is overwhelming support for a clear, direct connection to MarketFront and the Waterfront. This connection will allow people to access the Market without crossing the street. It will also allow park users to walk directly down to the Waterfront once the Overlook Walk is completed.

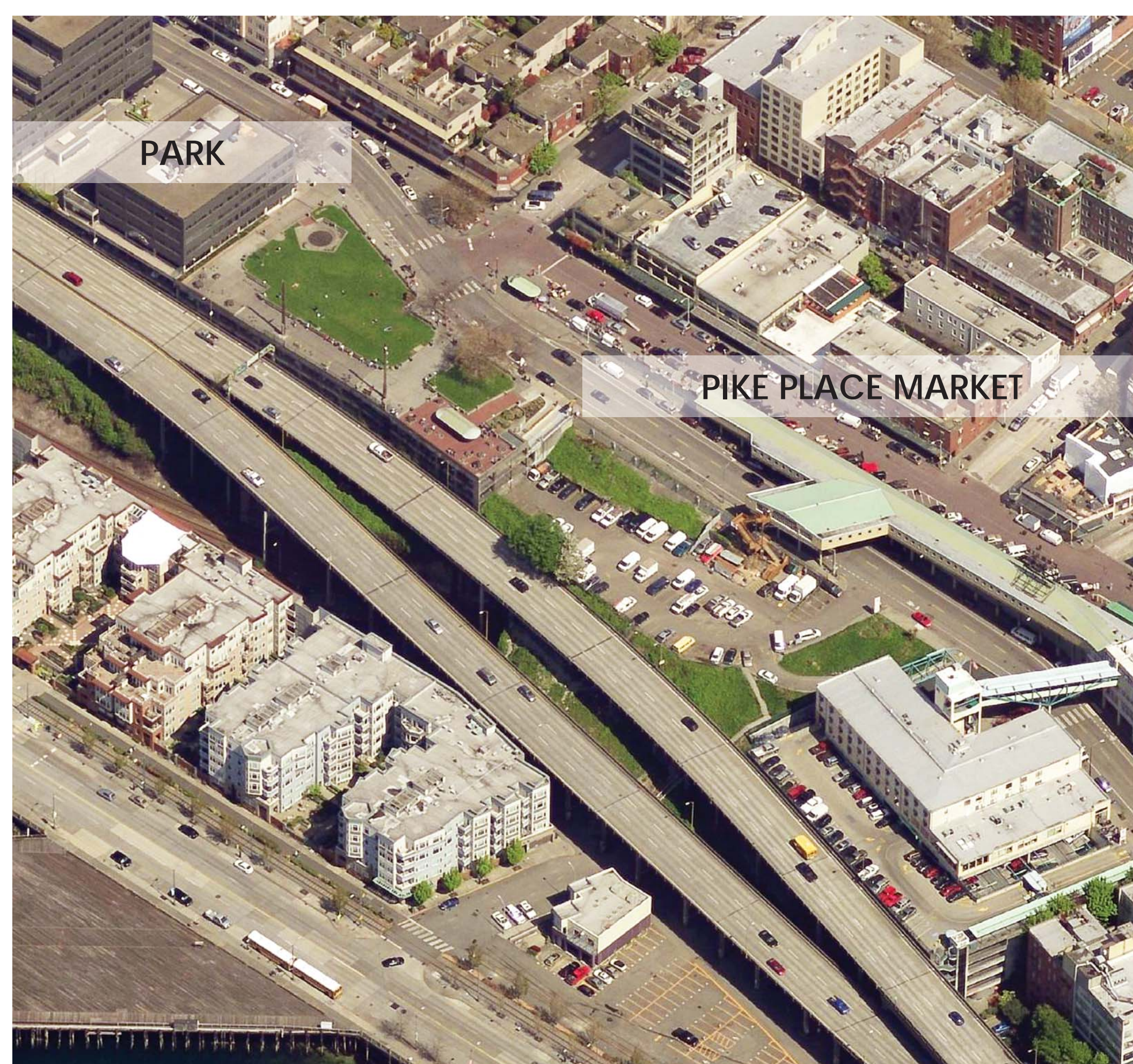
BACKGROUND

Three neighboring projects — MarketFront, the Overlook Walk, and the removal of the Alaskan Way Viaduct—will change the park’s immediate context. The park renovation will take these projects into account in order to reinforce the park’s presence and importance in Seattle.

The city has adopted a visionary plan to rebuild its waterfront and better connect it to downtown, following the removal of the Alaskan Way Viaduct. The plan features an array of new public open spaces, including the Overlook Walk, which spans from the Seattle Aquarium to the new MarketFront

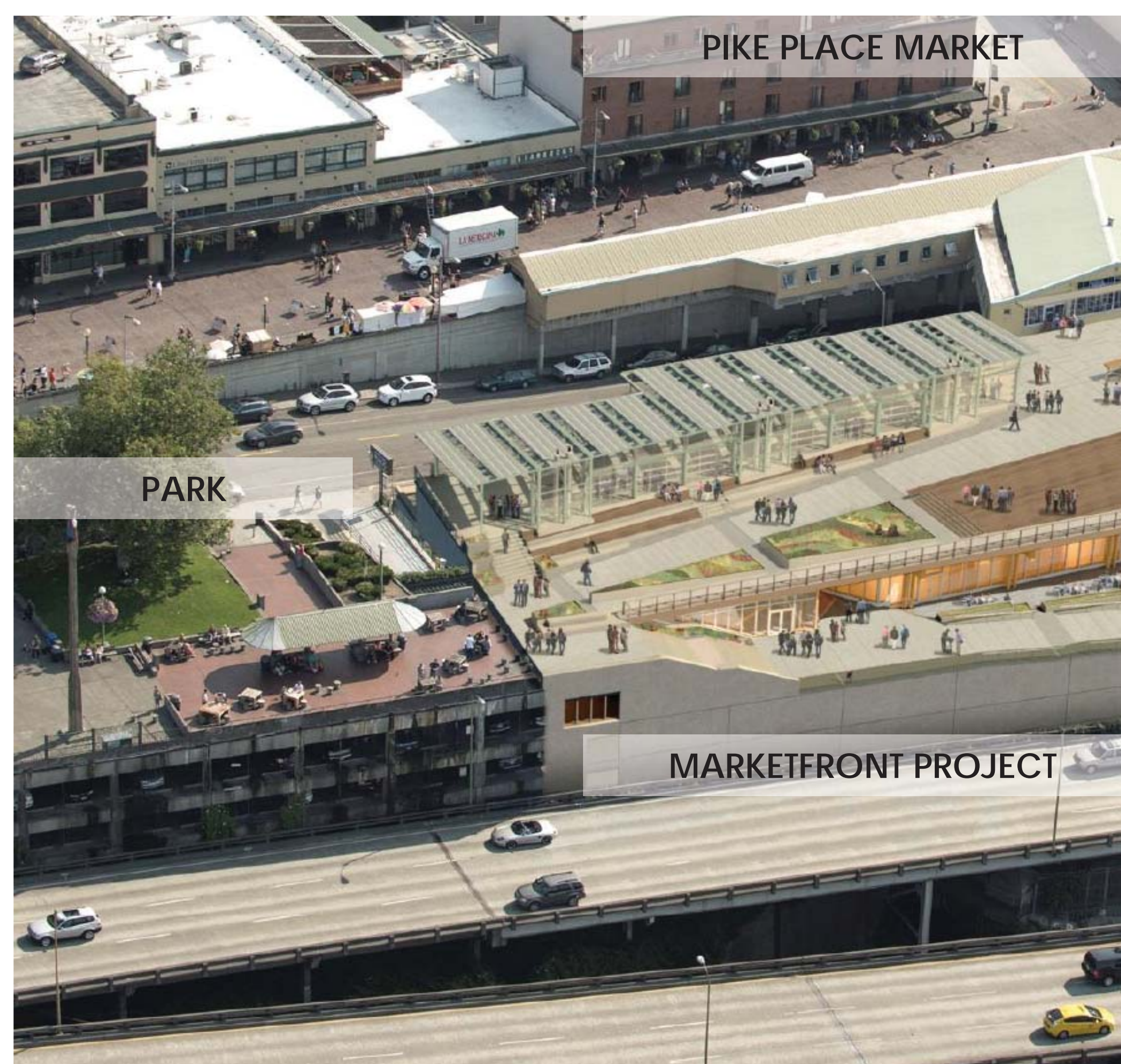
project. MarketFront will be a new waterfront-facing extension of the historic Market, providing opportunities for farmers and crafts people, social services, and senior housing, as well as public open space. Together these projects will provide a continuous pedestrian route between the Market and Elliott Bay, a grand gesture to connect two of Seattle’s greatest assets—immediately adjacent to Victor Steinbrueck Park.

EXISTING CONDITION



2017

MarketFront Project complete late 2016 / early 2017



FUTURE CONDITION

Overlook Walk to Alaskan Way



Artist’s rendering of the MarketFront Project, adjacent to the park. The MarketFront site was designed to accommodate a park connection to the future Overlook Walk, down to the waterfront. Image by MarketFront.

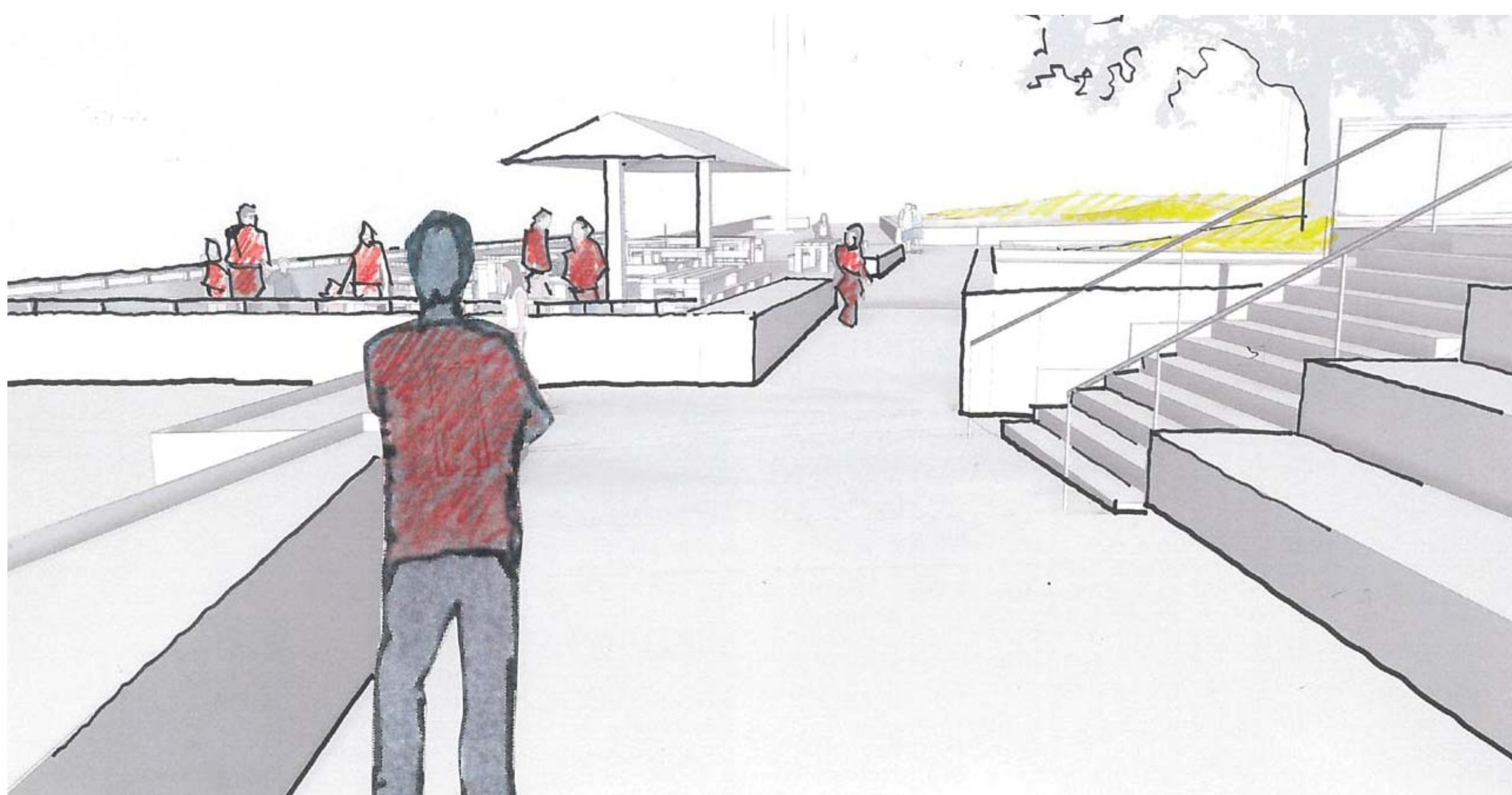
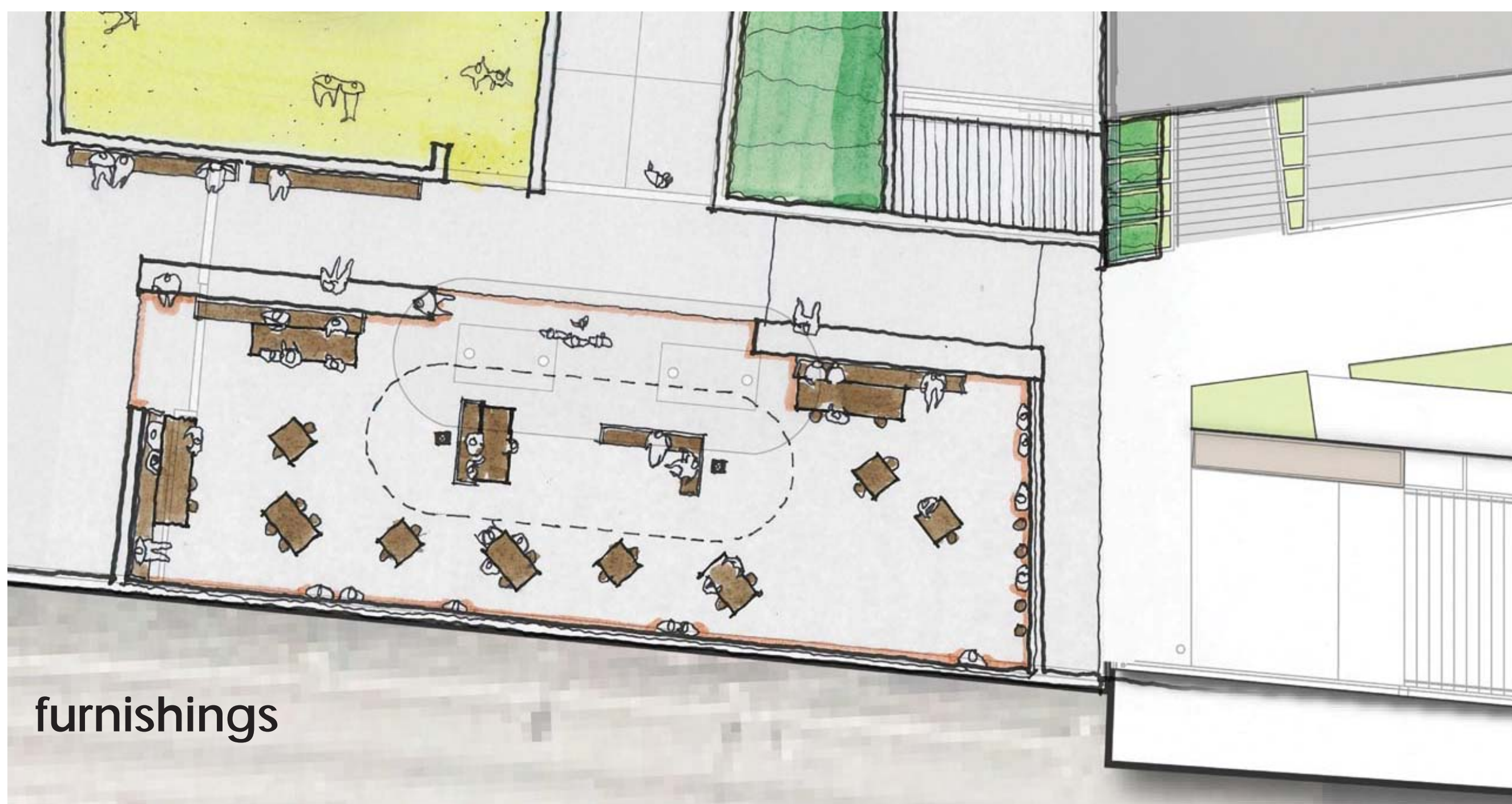
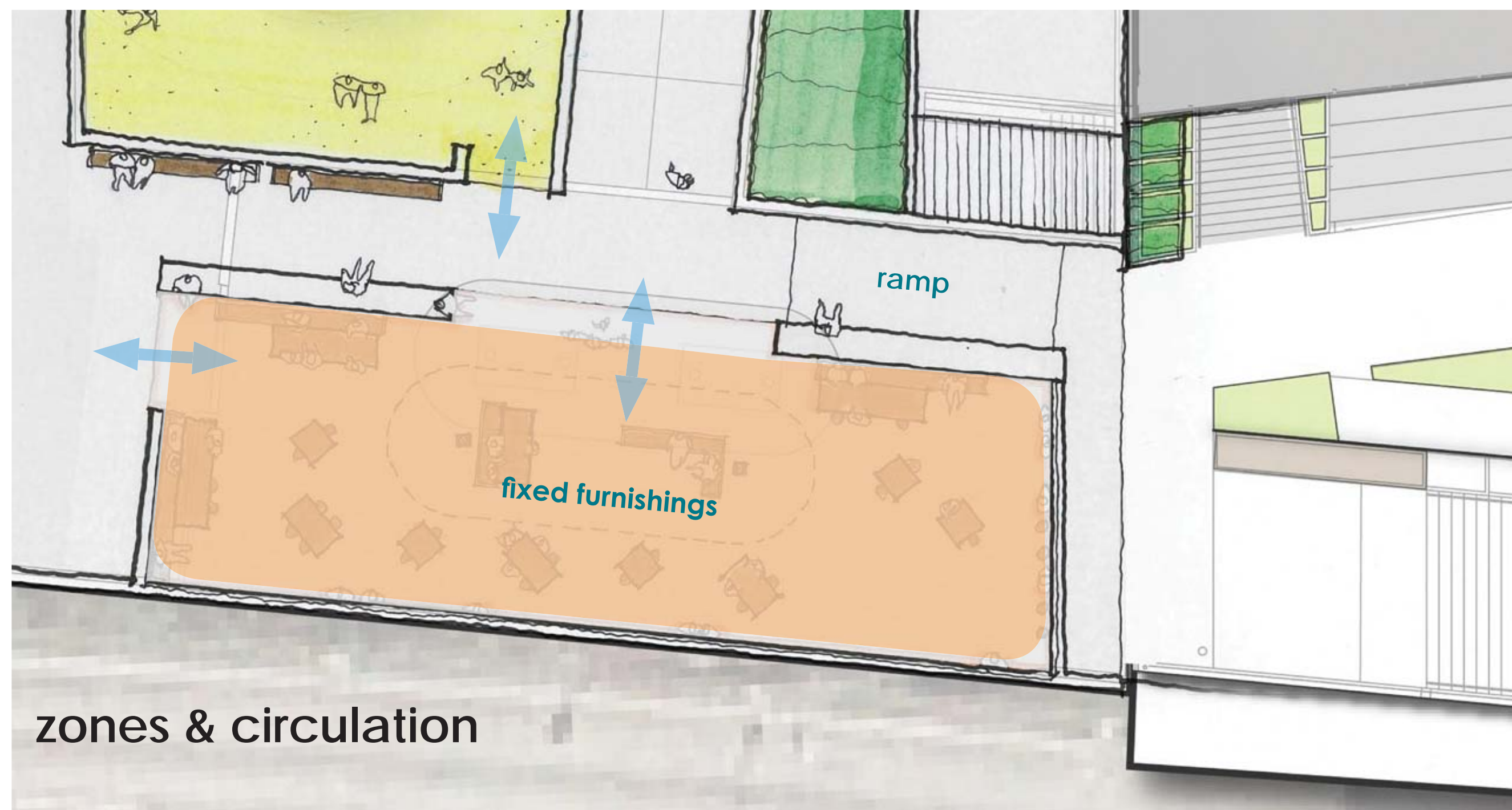
Artist’s rendering of a preliminary concept for the Overlook walk and MarketFront project, adjacent to the park. The overlook walk is in design now. Image by Waterfront Seattle.

CONNECTION

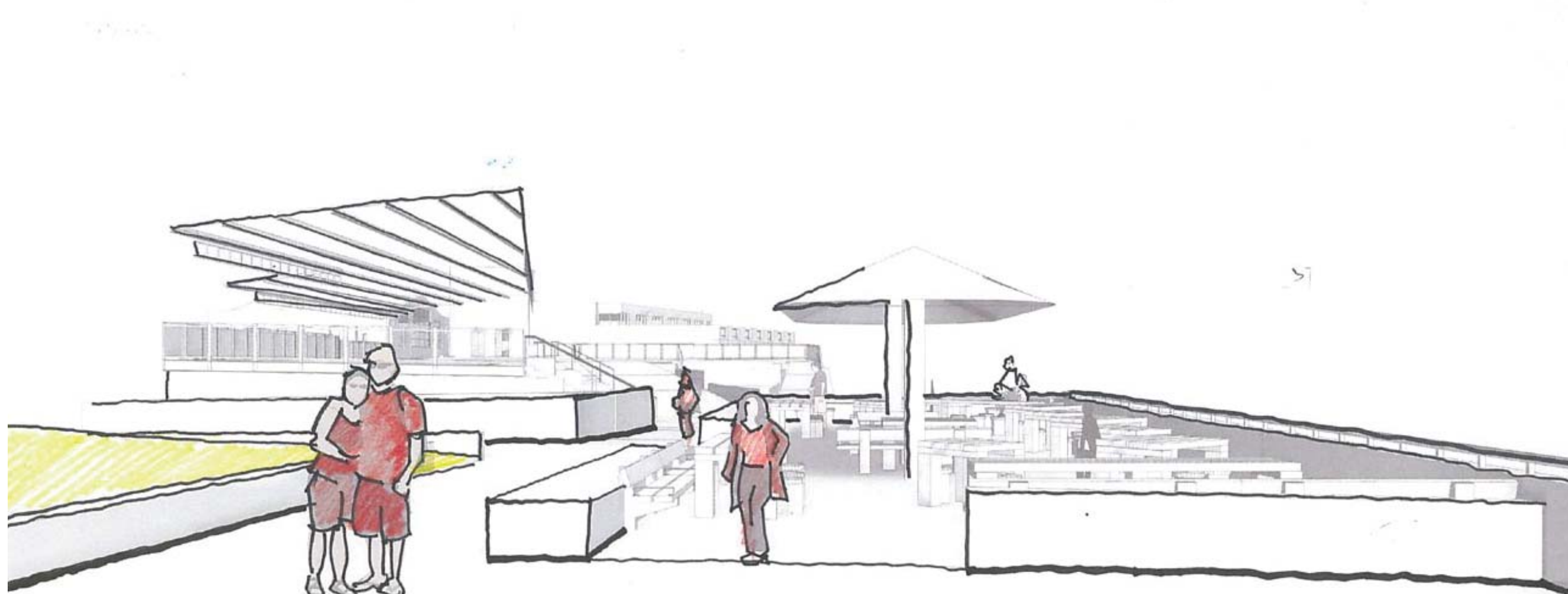
Which option do you prefer?

OPTION 1

This option provides a direct accessible path between the park and MarketFront. It separates circulation from the picnic/ gathering area. We can provide the same amount of seating that exists now by being thoughtful about table size and placement.



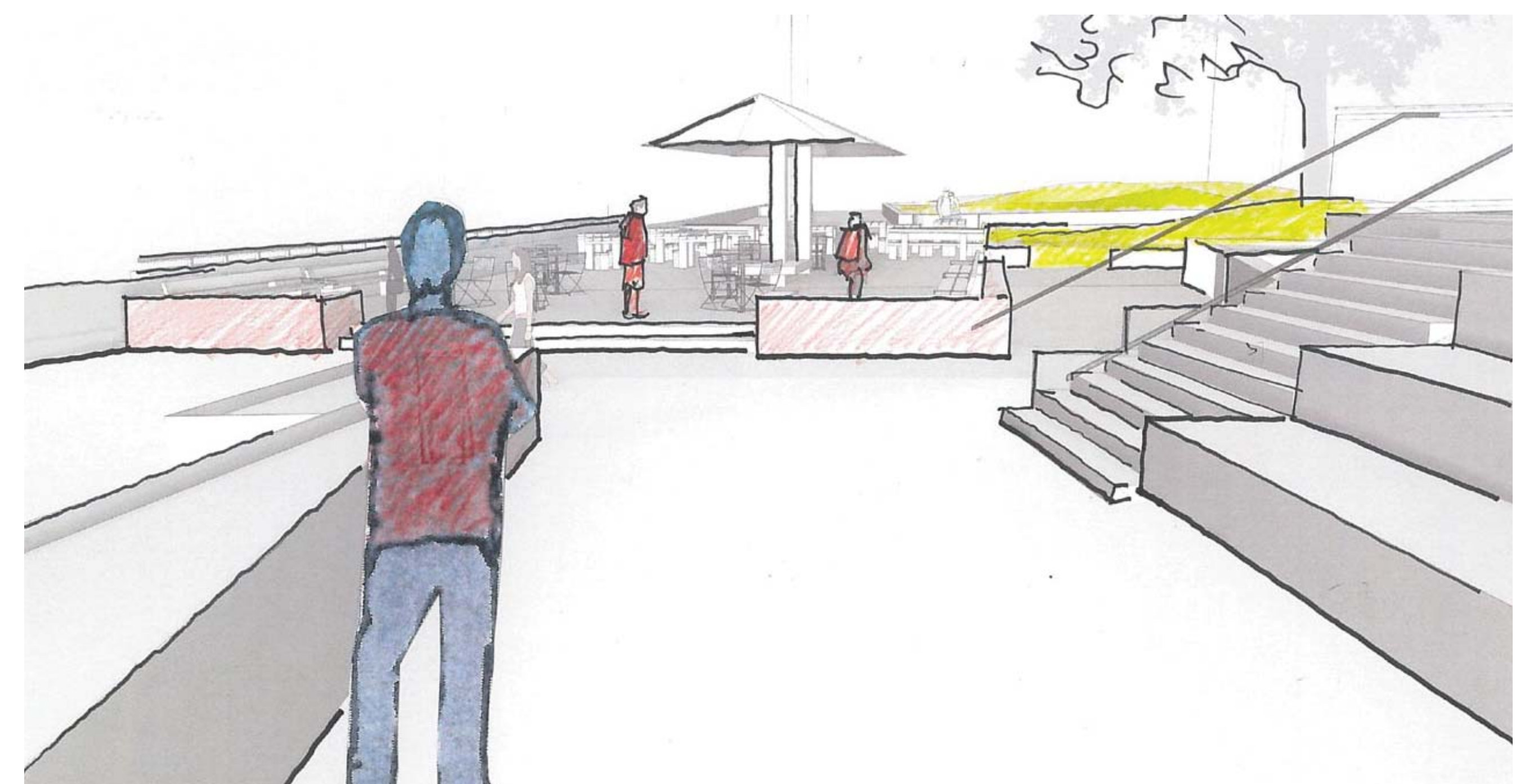
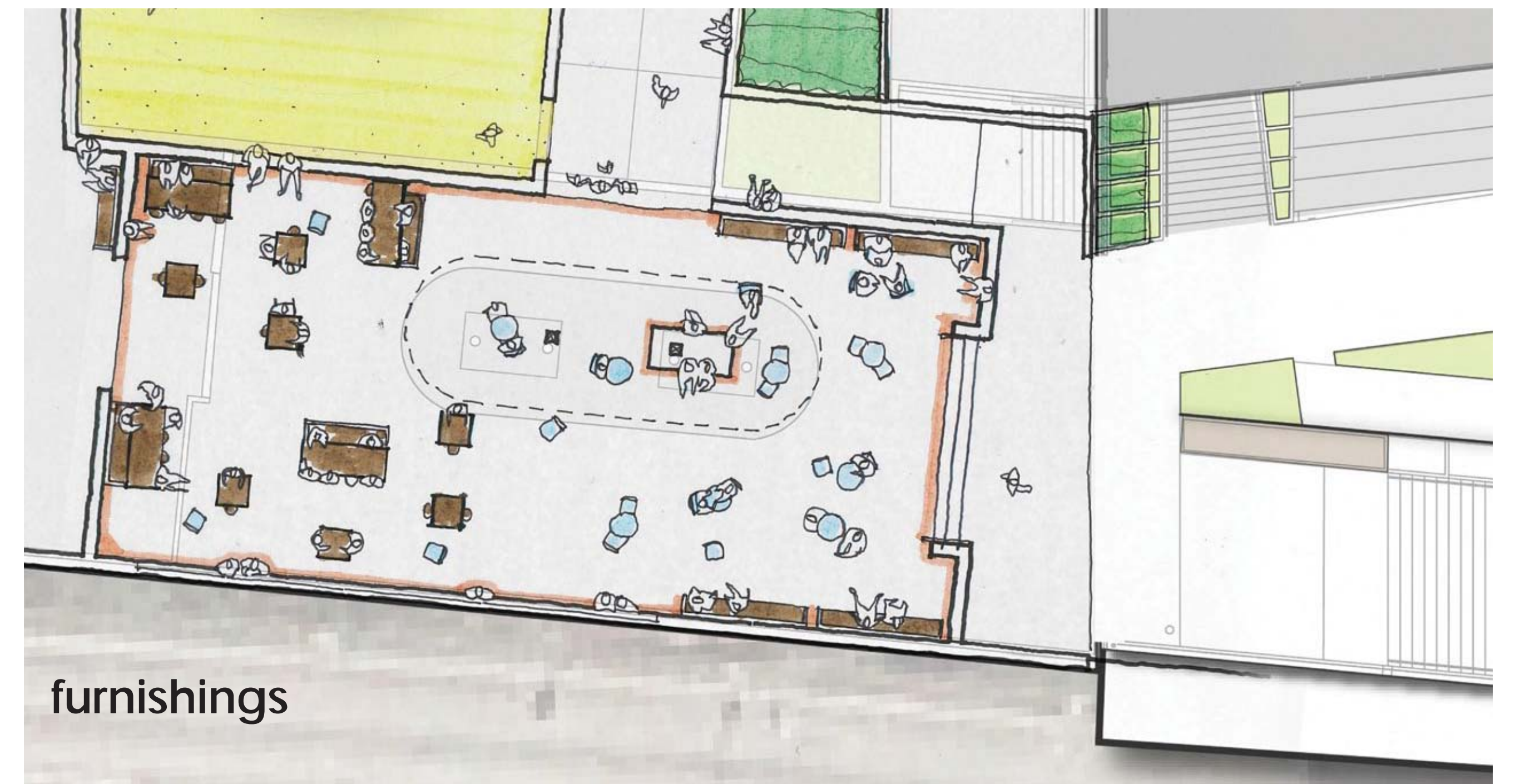
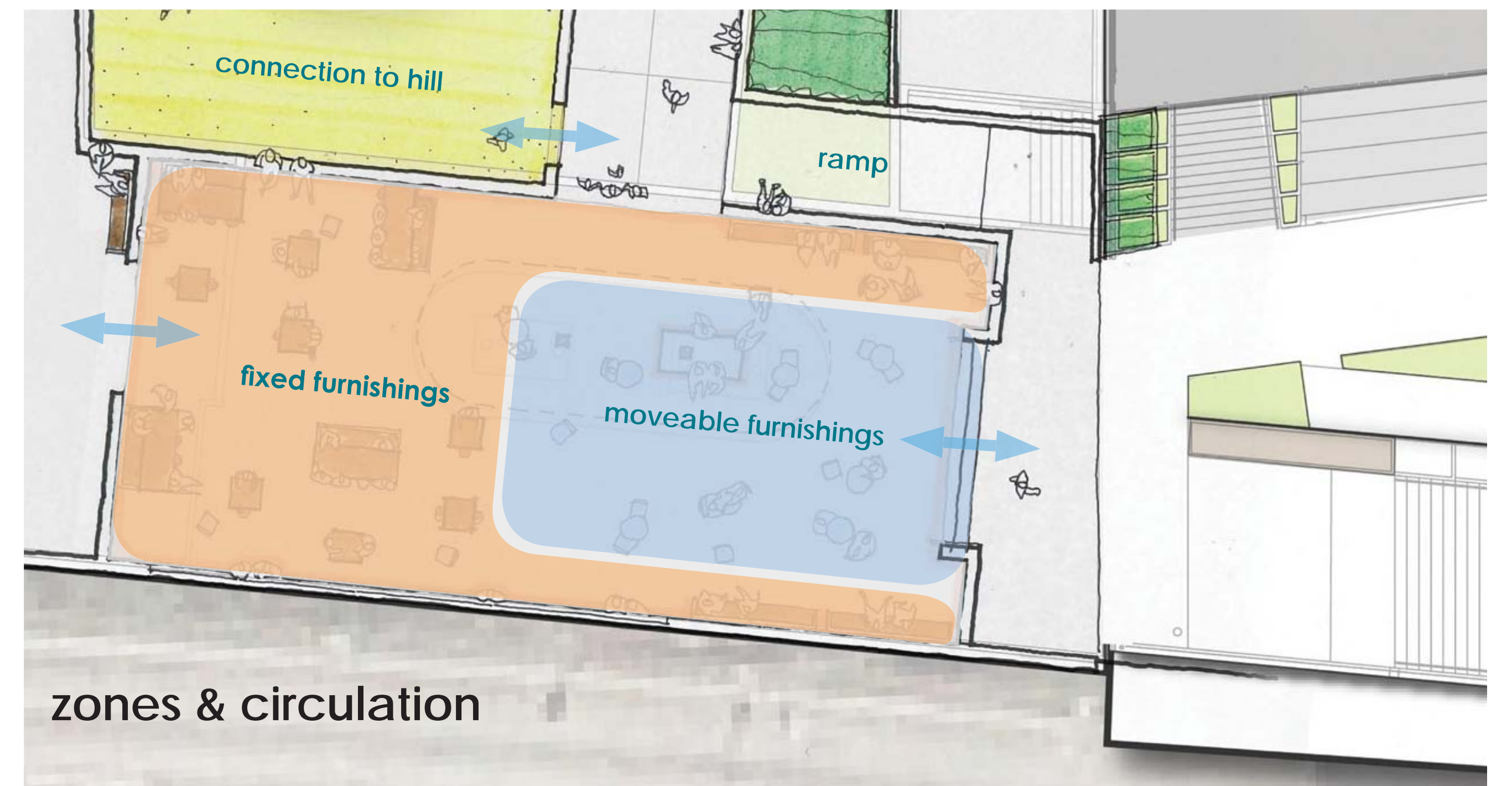
view from MarketFront to park



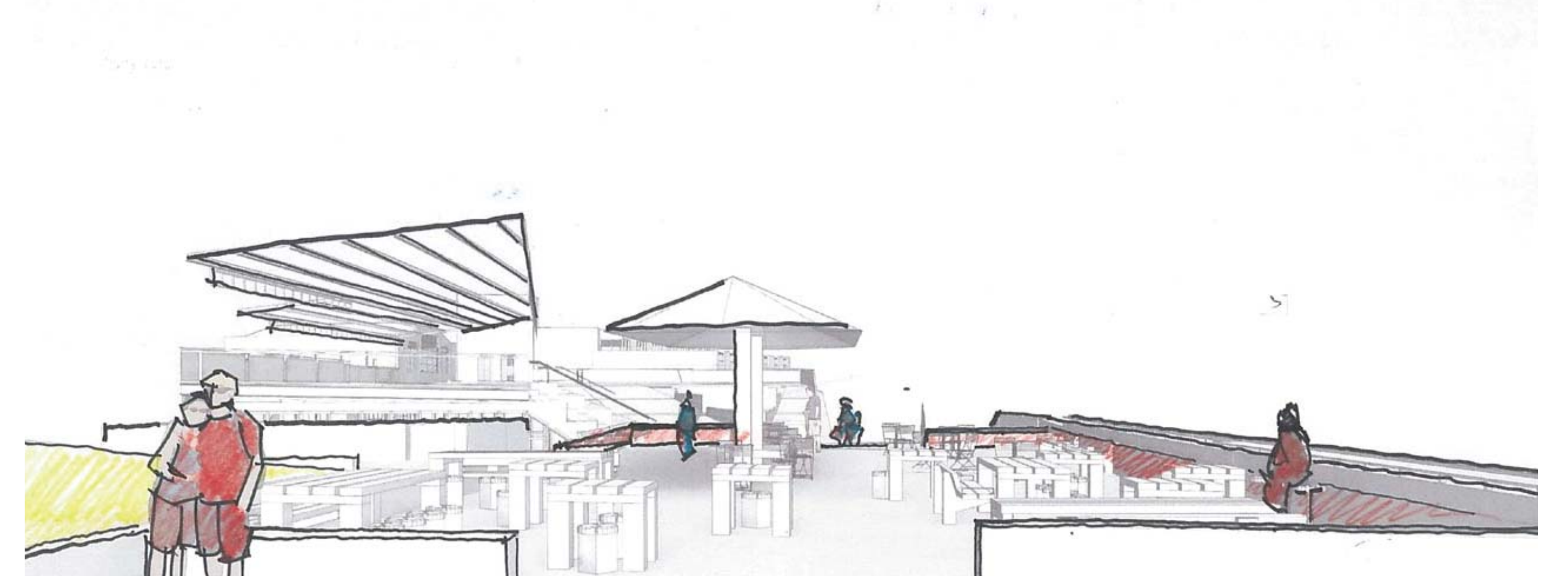
view from park to MarketFront

OPTION 2

This option disperses circulation at the south west corner. Visitors can move between MarketFront and the picnic/ gathering area via a set of a few steps. They can also use an accessible route around the corner. We can provide the same amount of seating that exists now by being thoughtful about table size and placement. This option could also supplement furnishings with movable tables and chairs as shown below.



view from MarketFront to park



view from park to MarketFront

LIGHTING

The existing lighting in the park does not meet current standards, and its technology is out-of-date. Park lighting will be improved to provide a more welcoming and comfortable atmosphere in the evening hours.

OUR PRIORITIES

1. Correct light levels throughout
2. Correct (match) color temperature throughout
3. Minimize contrast (light/dark)
4. Enhance wayfinding
5. Ensure a holistic aesthetic



existing conditions

The park currently has very bright spots and very dark spots. Light levels and light color is uneven. It does not promote a sense of safety or help welcome people into the park.

Red "X"s indicate non-functioning lights (spring 2016).

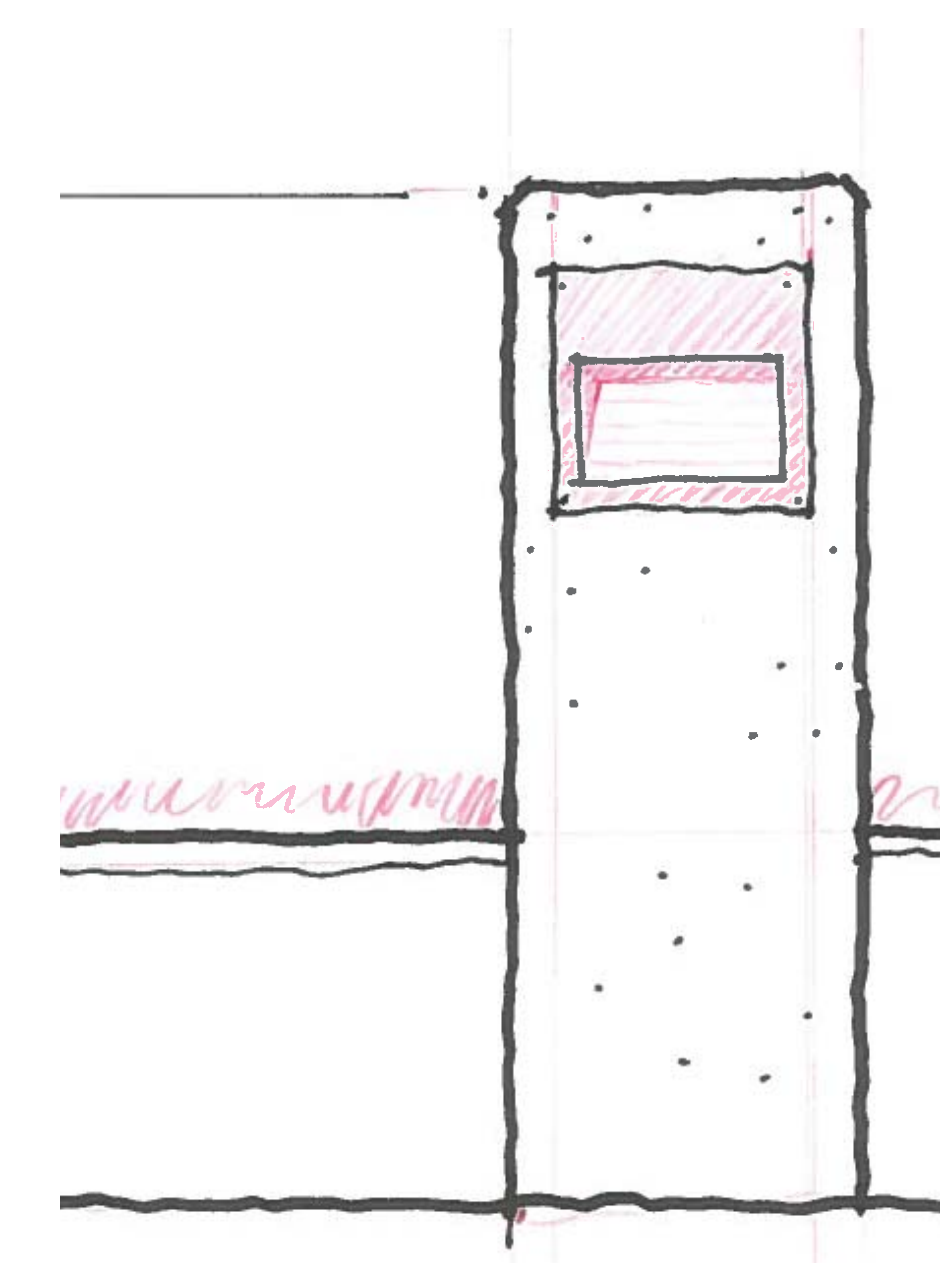
Pole

Pedestrian pole lights will be replaced with a similar fixture that disperses light better, is shielded on top, and does not produce glare. The bulb will be a warm-toned LED. Alternate fixtures with a simple aesthetic will also be studied to ensure that the best possible light is selected for the park.



Bollard

Bollards will be replaced with similar, more narrow bollards and new LED luminaries. The design team is exploring ways to cast light in a 180 degree or 360 degree pattern to improve the lighting of the pathways and the edges of the lawn. Off-the shelf, powder-coated bollards will also be studied to ensure that the best possible light is selected for the park.



Supplemental lighting

Supplemental lighting will likely be incorporated in areas such as the pergola canopy and along the railing. This lighting will be subtle but will improve visibility in these areas.



Please use your comment card to provide feedback

NATIVE AMERICAN CULTURE

Victor Steinbrueck Park has special significance to many urban Native Americans, and it is known to some as "Native Park". The original design features two carved poles, meant to be welcoming to all. The design team is working with members from Seattle's Native American community to explore additional ways to honor Native American culture in the park.



WE ASKED:

Should the park renovation do more to recognize Native American Culture?

| | |
|------------|----------|
| yes | no |
| 163 | 5 |

There is substantial support for additional representation of Native American culture and history to be integrated into the park. There is particular interest in elements that reference the area's Coast Salish culture.

Ideas include:

Native American design, patterns, and natural materials



Native American language



Native American story telling



Native American art



Please use your comment card to provide feedback