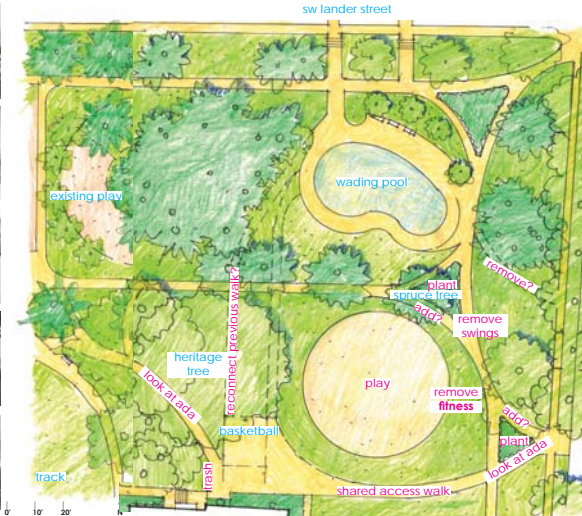


Then (Olmsted History)



Hiawatha Playground 1912 by SMA
May 1914 of Hiawatha Playground 1914 by SMA
playground in 1900
Hiawatha Playground 1912 by SMA
Children of Hiawatha Playground 1912
Hiawatha Playground 1912
west Seattle high school - Seattle - 1917
Boys exercising at Hiawatha Playground 1911 by SMA
Baseball game of Hiawatha Playground 1915 by SMA
Dance class at Hiawatha Playground circa 1918



Setting up the frame



Olmsted Parks Study



Play (Options)

Then (Olmsted History)

- People were familiar with the history of the park
- People loved the old 25-foot high play equipment!

Setting up the frame (Site Study)

- Some were happy to get out into the sun
- **People were concerned to fill up the lawn with play area**
- **Not many comments about removing fitness equipment**
- Few comments about removing the existing swings

Play (Options)

- Lots of parents preferring fewer colors, fewer plastic items, more metal equipment
- Many comments supporting nature play
- Support for tall towers, element of danger
- All slides supported
- Net climbers supported
- Climbing pieces, the taller the better, i.e. element of danger!
- Classic swings were easy
- Support for unique items – the art play piece was popular
- Comment to have music
- There is a toddler class at the CC M/TH – provide equipment
- Obstacle courses



Ella Bailey



Cal Anderson



Discovery Park



Bayview Playfield



Maple Leaf



Maple Leaf



Kirke Park



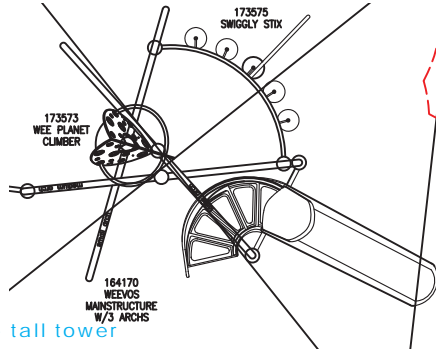
Owens Park Bainbridge



Kinneer



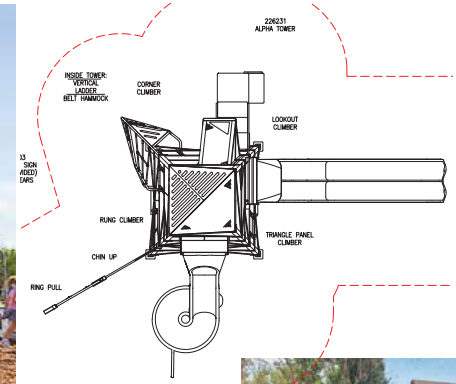
slide play - curled



slide play - tall tower



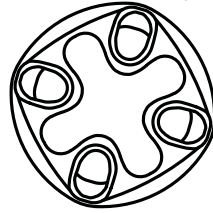
slide play - tall tower



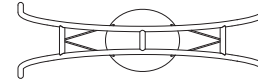
slide play - roller



whirl play



173591 OMNISPIN SPINNER



173592 OODLE SWING DB ONLY



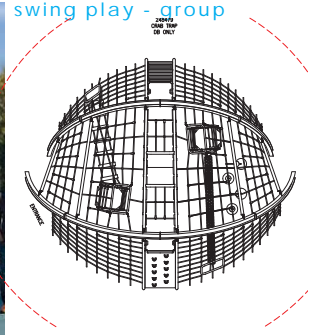
swing play - group



swing play - classic



net climber play



2-5 play

Seattle
Parks &
Recreation

Karen Kiest | Landscape Architects

5-99 play

HIAWATHA PLAY AREA RENOVATION
Community Engagement Boards Prep
Parks ProView October 15, 2019

play pieces - ideas



0' 10' 20' N



Existing play area



Swings



Athletic equipment



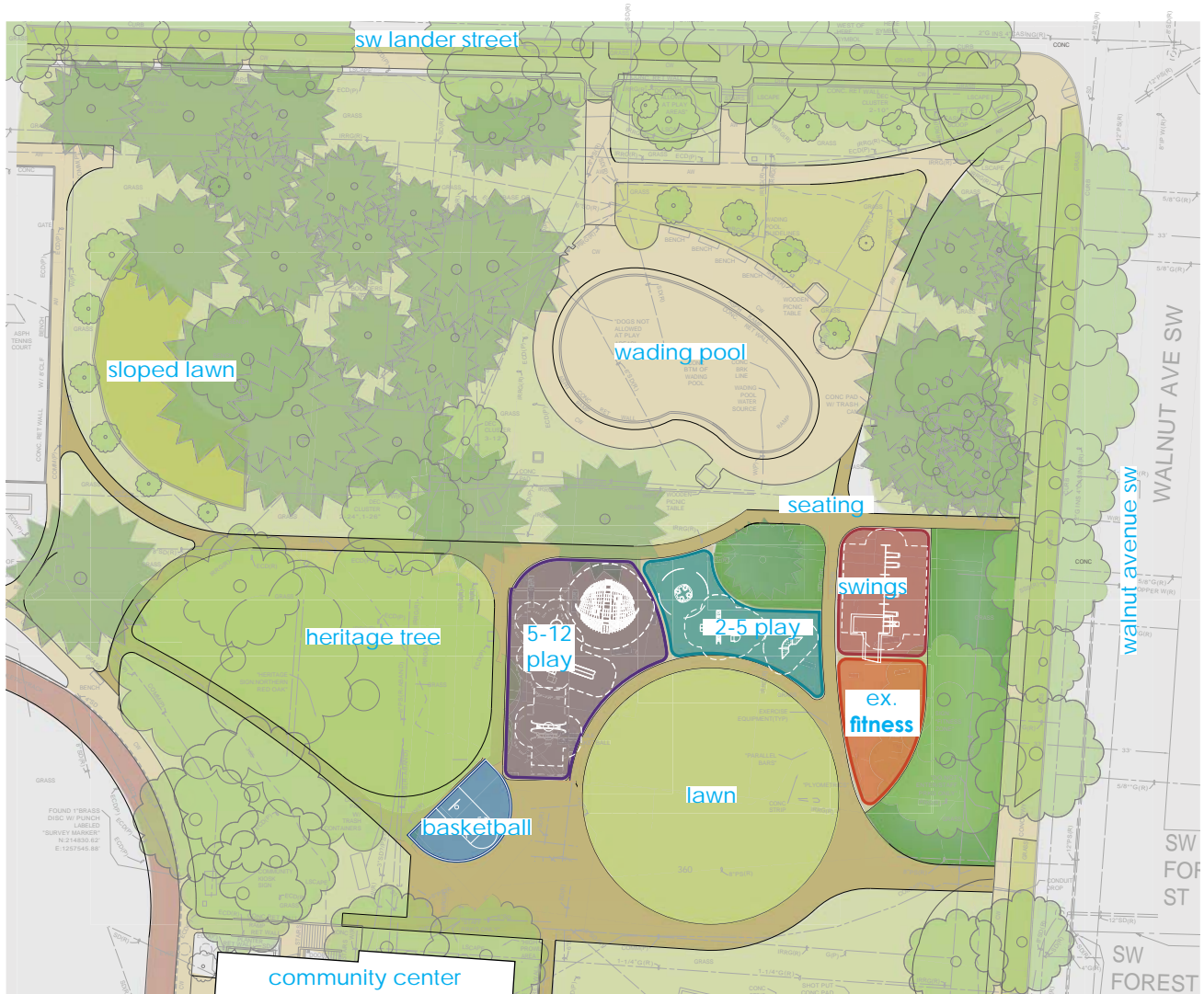
Existing spruce



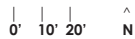
Irrigation by heritage tree



0' 10' 20' ^
N



track





0' 10' 20' ^
N

