

# Be'er Sheva Park Improvements

Public Meeting #1 Feedback - 3/3/18



# TABLE REPORT BACK

- ## #1
- OWNERSHIP OF SPACE THROUGH DESIGN
  - MICRO-STALLS (REPLACE PARKING)
  - PIER → CHINOOK BEACH
  - NATURAL GARDEN (GATEWAY) - COLORFUL FLOWERS
  - TRASH/LITTER GRABBERS
  - GATHERING
  - RESPECT + HONOR (HISTORY)
  - STAGE → RAP/POETRY

- ## #2
- WELCOMING/GENEROUS AREA
  - BIKE TRAFFIC + ACCESS
  - CLEAR PATH TO WATER
  - AMENITY AREA / SHELTERS
  - PIER
  - BIRD INTEREST
  - PATH NEAR CREEK

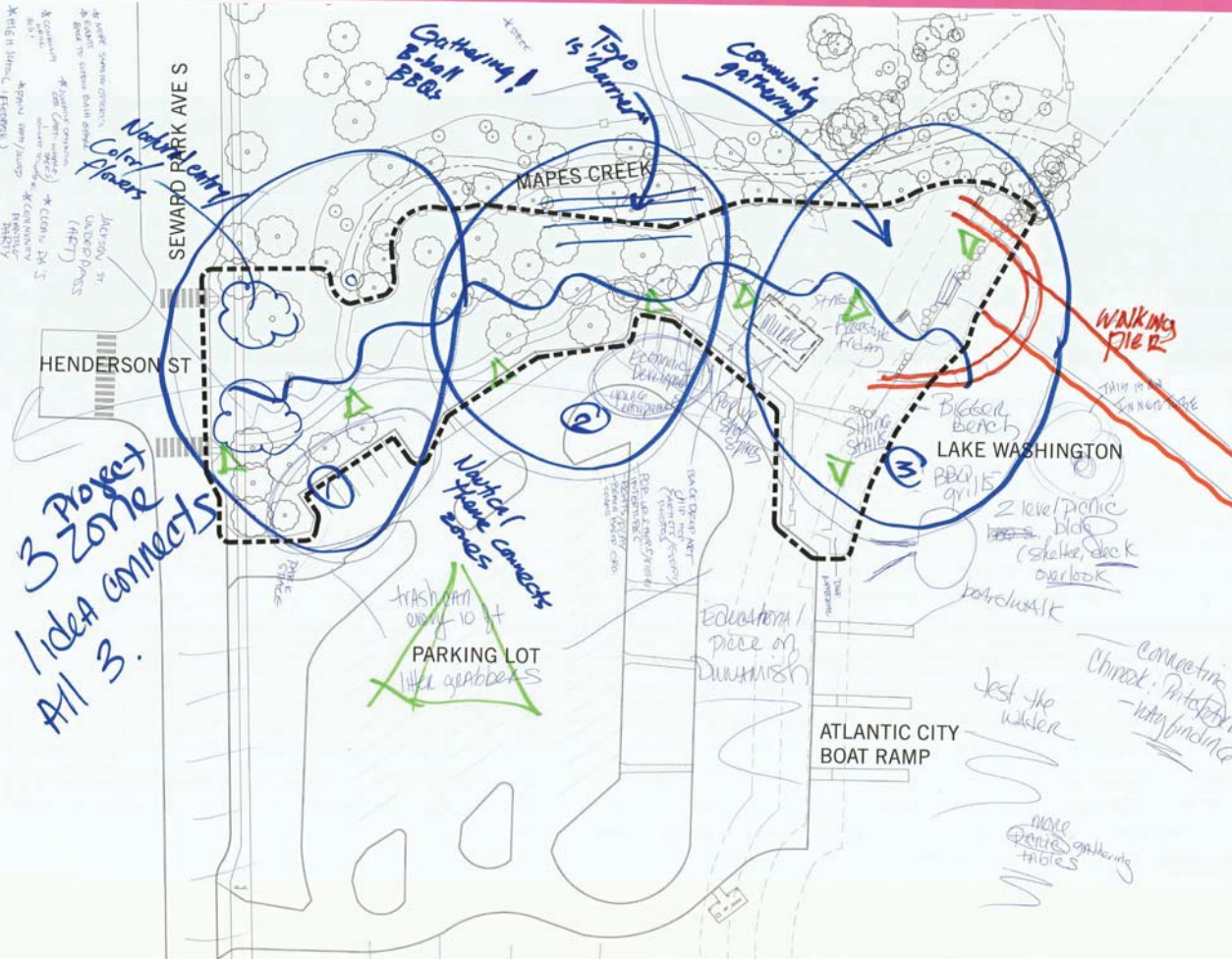
- ## #3
- STAGE
  - DESIGN BATHROOM W/ LOCAL ARTIST
  - RENT-A-BOAT (AFFORDABLE)
  - MOSAIC @ ENTRY (REPRESENT RB COMMUNITY)
  - FARM / FOOD PROGRAM
  - BETTER LIGHTING
  - HONOR DUWAMISH
  - FOOD PROGRAMS
  - SUPPORT LOCAL BUSINESSES
  - STREET ART
  - CONCESSIONS / WAYS TO MAKE \$  
locally
  - ↳ USE \$ TO SUPPORT RB HIGH SCHOOL

- ## #4
- AREA FOR YOUTH TO CONNECT TO COMM.
  - IMPROVE PEDESTRIAN FLOW
  - HISTORICAL CONNECTION + EDUCATIONAL ELEMENT
  - INTEGRATE NATURAL/RESTORATION → ELEVATIONAL VIEWS
  - NATURAL SHORELINE RESTORATION
  - BLUE/ORANGE (SCHOOL + COMMUNITY COLORS)
  - BIKE LOOP/DESTINATION
  - BIKE RACKS/BIKE REPAIR STATION

- ## #5
- CONCESSION STAND
  - CONNECTION TO RB HIGH SCHOOL
  - SAFETY + LIGHTING
  - LOOP/WALKING PATH
  - ARTWORK THAT REFLECTS COMM. DIVERSITY
  - CEPTED
  - OVERLOOK
  - SWIM IN WATER
  - SIT + TOUCH WATER
  - FISH POND / CLEANING STATION / GRILLS
  - FAMILY GATHERING
  - OUTDOOR FITNESS EQUIPMENT
  - SHELTER → EXTEND FROM BACK OF BATHROOM
  - SHROUBS ↓ - ACCESS TO WATER
  - LARGE GROUP / FAMILY / RESERVABLE SPACES

# BE'ER SHEVA PARK IMPROVEMENT AREA

#1



## COMMENTS:

- <sup>carefully</sup> ~~use~~ <sup>use</sup> ~~way~~ - <sup>encourage</sup> ~~encourage~~ <sup>gathering</sup> ~~gathering~~ <sup>visiting</sup> ~~visiting~~ <sup>community</sup> ~~community~~ <sup>planted</sup> ~~planted~~ <sup>items</sup> ~~items~~
- <sup>community</sup> ~~community~~ <sup>planted</sup> ~~planted~~ <sup>items</sup> ~~items~~
- <sup>zone</sup> ~~zone~~ <sup>design</sup> ~~design~~ <sup>connect</sup> ~~connect~~
- <sup>nautical</sup> ~~nautical~~ <sup>themes</sup> ~~themes~~
- <sup>wave</sup> ~~wave~~ <sup>ring</sup> ~~ring~~
- <sup>multiple</sup> ~~multiple~~ <sup>rain</sup> ~~rain <sup>water</sup> ~~water <sup>runoff</sup> ~~runoff~~ <sup>area</sup> ~~area~~ <sup>flow</sup> ~~flow~~~~~~
- <sup>project</sup> ~~project <sup>that</sup> ~~that <sup>looks</sup> ~~looks <sup>relevant</sup> ~~relevant~~ <sup>to</sup> ~~to~~ <sup>both</sup> ~~both~~ <sup>water</sup> ~~water~~ <sup>and</sup> ~~and <sup>land</sup> ~~land~~~~~~~~~~
- <sup>while</sup> ~~while~~ <sup>not</sup> ~~not~~
- <sup>ownership</sup> ~~ownership~~ <sup>of</sup> ~~of~~ <sup>ideas</sup> ~~ideas <sup>made</sup> ~~made <sup>their</sup> ~~their <sup>design</sup> ~~design~~~~~~~~
- <sup>helped</sup> ~~helped <sup>market</sup> ~~market <sup>stalls</sup> ~~stalls <sup>around</sup> ~~around~~ <sup>areas</sup> ~~areas~~ -~~~~~~
- <sup>honor</sup> ~~honor~~ <sup>tribute</sup> ~~tribute <sup>to</sup> ~~to~~ <sup>native</sup> ~~native <sup>people</sup> ~~people~~~~~~
- <sup>getting</sup> ~~getting <sup>stalls</sup> ~~stalls <sup>at</sup> ~~at <sup>beach</sup> ~~beach~~~~~~~~
- <sup>the</sup> ~~the <sup>main</sup> ~~main <sup>feature</sup> ~~feature <sup>of</sup> ~~of~~ <sup>the</sup> ~~the <sup>park</sup> ~~park <sup>is</sup> ~~is <sup>the</sup> ~~the <sup>water</sup> ~~water <sup>front</sup> ~~front <sup>of</sup> ~~of~~ <sup>the</sup> ~~the <sup>park</sup> ~~park <sup>and</sup> ~~and <sup>the</sup> ~~the <sup>beach</sup> ~~beach <sup>area</sup> ~~area~~~~~~~~~~~~~~~~~~~~~~~~~~~~~~
- <sup>use</sup> ~~use <sup>the</sup> ~~the <sup>big</sup> ~~big <sup>groups</sup> ~~groups <sup>of</sup> ~~of~~ <sup>big</sup> ~~big <sup>families</sup> ~~families~~~~~~~~~~~~

# BE'ER SHEVA PARK IMPROVEMENTS

March 3, 2018

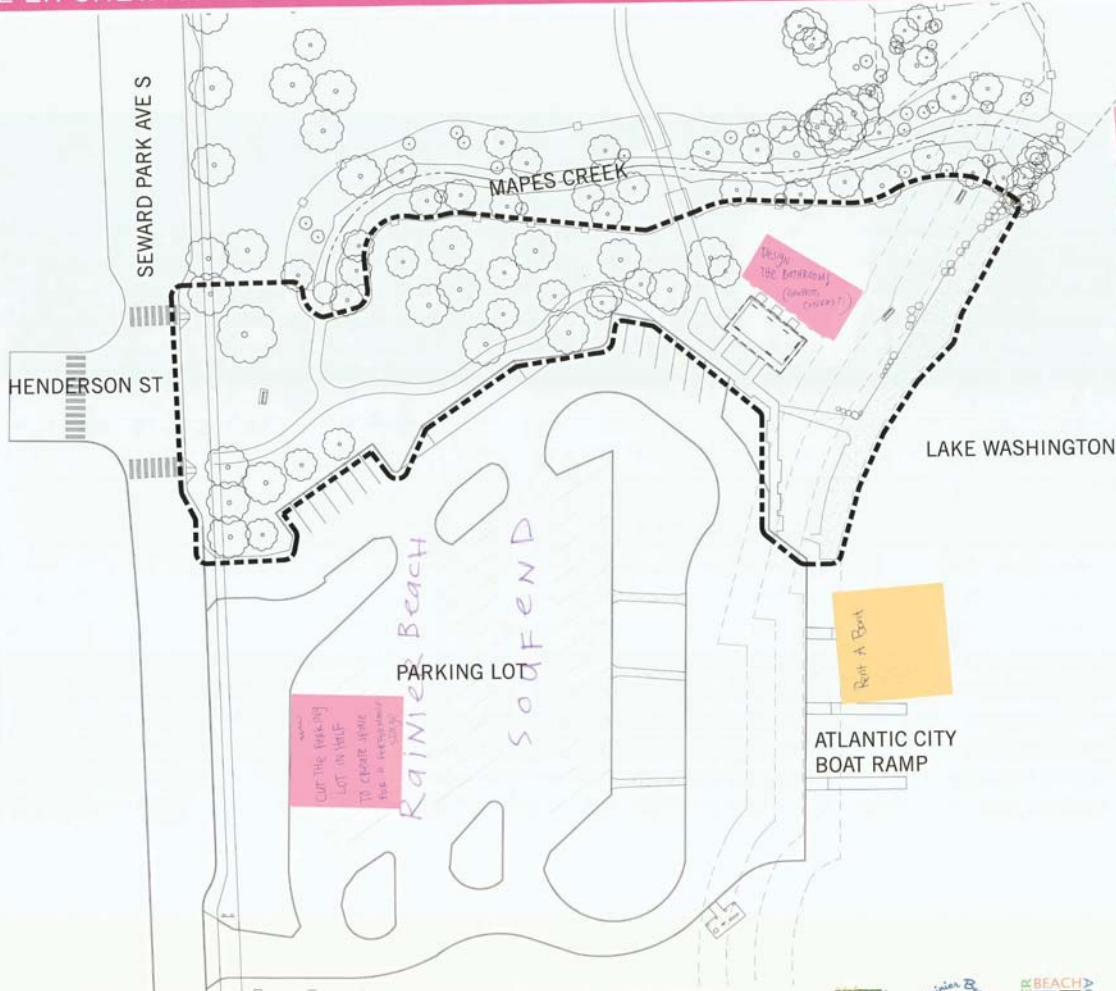
N SCALE: 1"=20'





# BE'ER SHEVA PARK IMPROVEMENT AREA

#5



## COMMENTS:

- Community stage for local performers
- SEA PITS
- Rent a Boat by Atlantic City Boat Ramp
- FUTURE SCHOOL
- BETTER LIGHTING
- MOSAIC
- Flower Garden/PROPOSE
- Farm Stand + URBAN FARM?
- RENOVATE PARKING LOT
- HONOR DUWAMISH!
- NEW 2 BUILD LOCAL BUSINESS (PRO-ENVIRONMENT)
- Shelter over the Basketball Court
- \_\_\_\_\_
- \_\_\_\_\_
- \_\_\_\_\_
- \_\_\_\_\_

STREET ART!  
GRAFFITI & WALLPAPER

Design the entrance (garden, creek?)

Cut the parking lot in half to create space for a playground

Rent A Boat

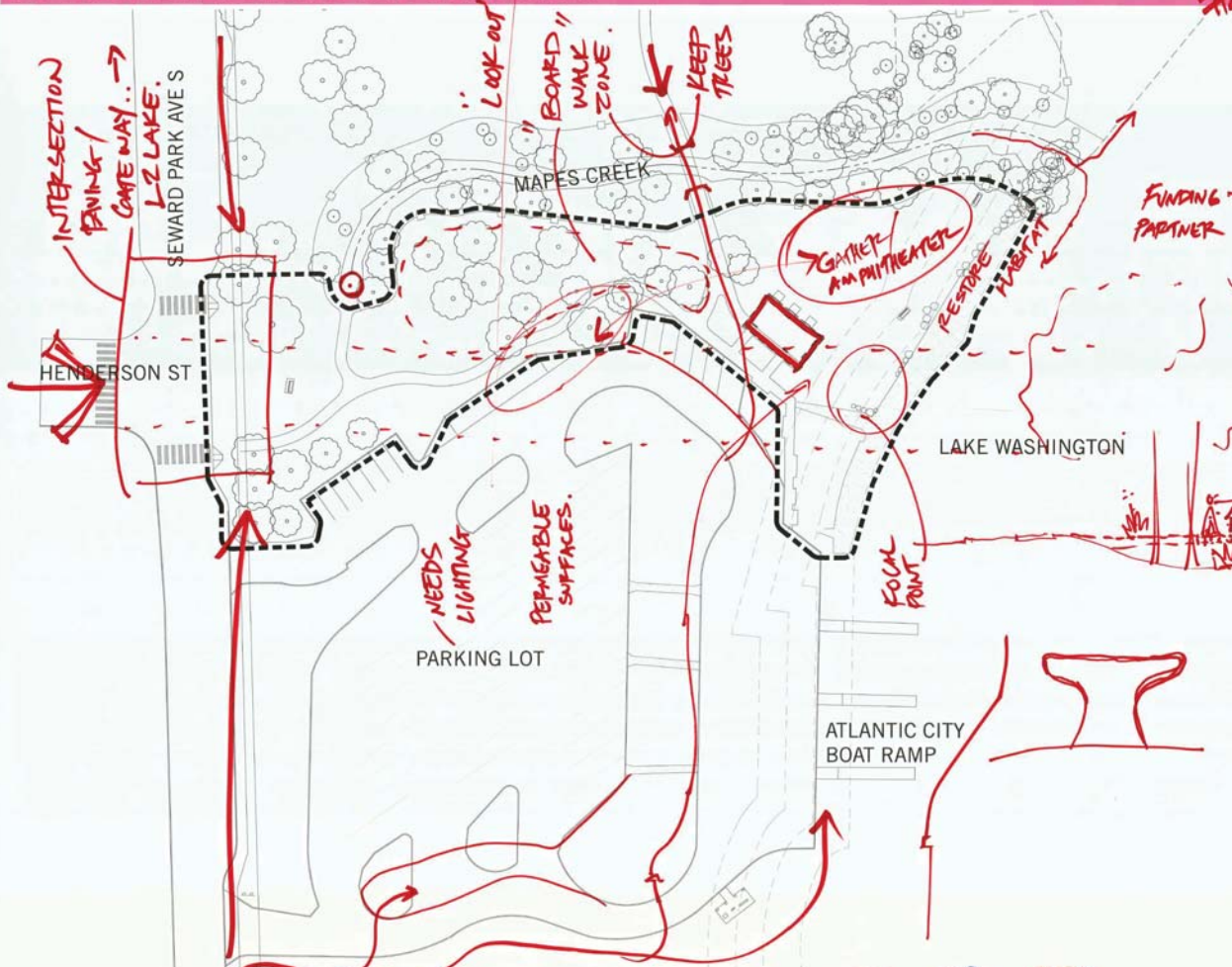
# BE'ER SHEVA PARK IMPROVEMENTS

March 3, 2018

N SCALE: 1"=20'



# BE'ER SHEVA PARK IMPROVEMENT AREA



- COMMENTS:
- NATURAL SHORELINE GOOD
  - PEOPLE / IN WATER ACCESS.
  - DUMAMISH PEOPLE HERITAGE IS STRONG
  - BEING HISTORY / LOCAL CULTURE
  - CULTURAL PROCESSION LINK -> LAKE
  - ACTIVE RECREATION OPPORTUNITIES
  - COLORFUL ELEMENTS
    - SCHOOL COLORS -
    - YOUTH STEWARDSHIP
    - YOUTH PRIDE
  - COMMUNITY BUILD PROJECT AS FOCAL POINT
  - ANOTHER BRIDGE / WAY ACROSS MAPES CREEK
  - AMPHITHEATER AREA
  - BIKE INTEGRATION
    - RACKS.
  - PED / BIKE LOOP
  - FOOD / BBQ'S
    - BIG FAMILY SIZE!

FUNDING PARTNER

#4

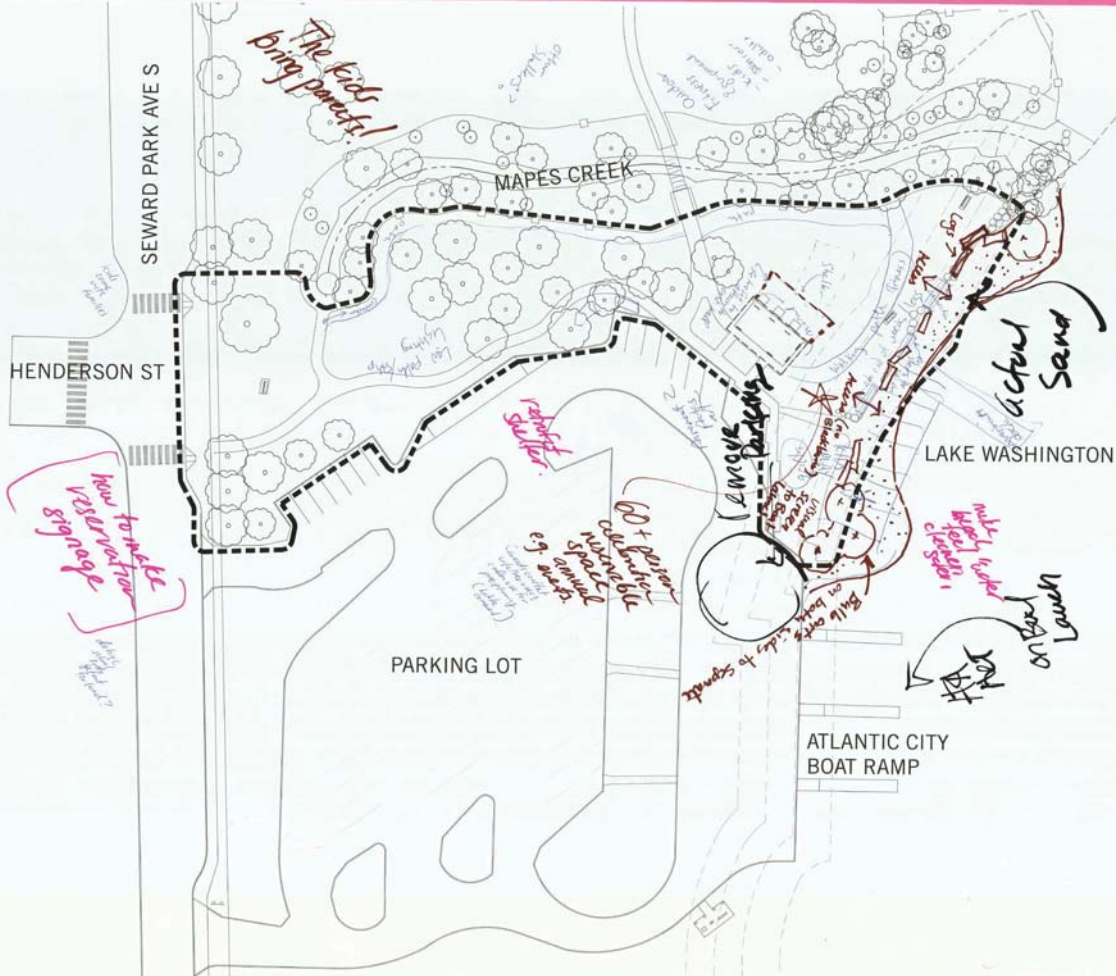
## BE'ER SHEVA PARK IMPROVEMENTS

March 3, 2018

N SCALE: 1"=20'



#5



next zones need to face

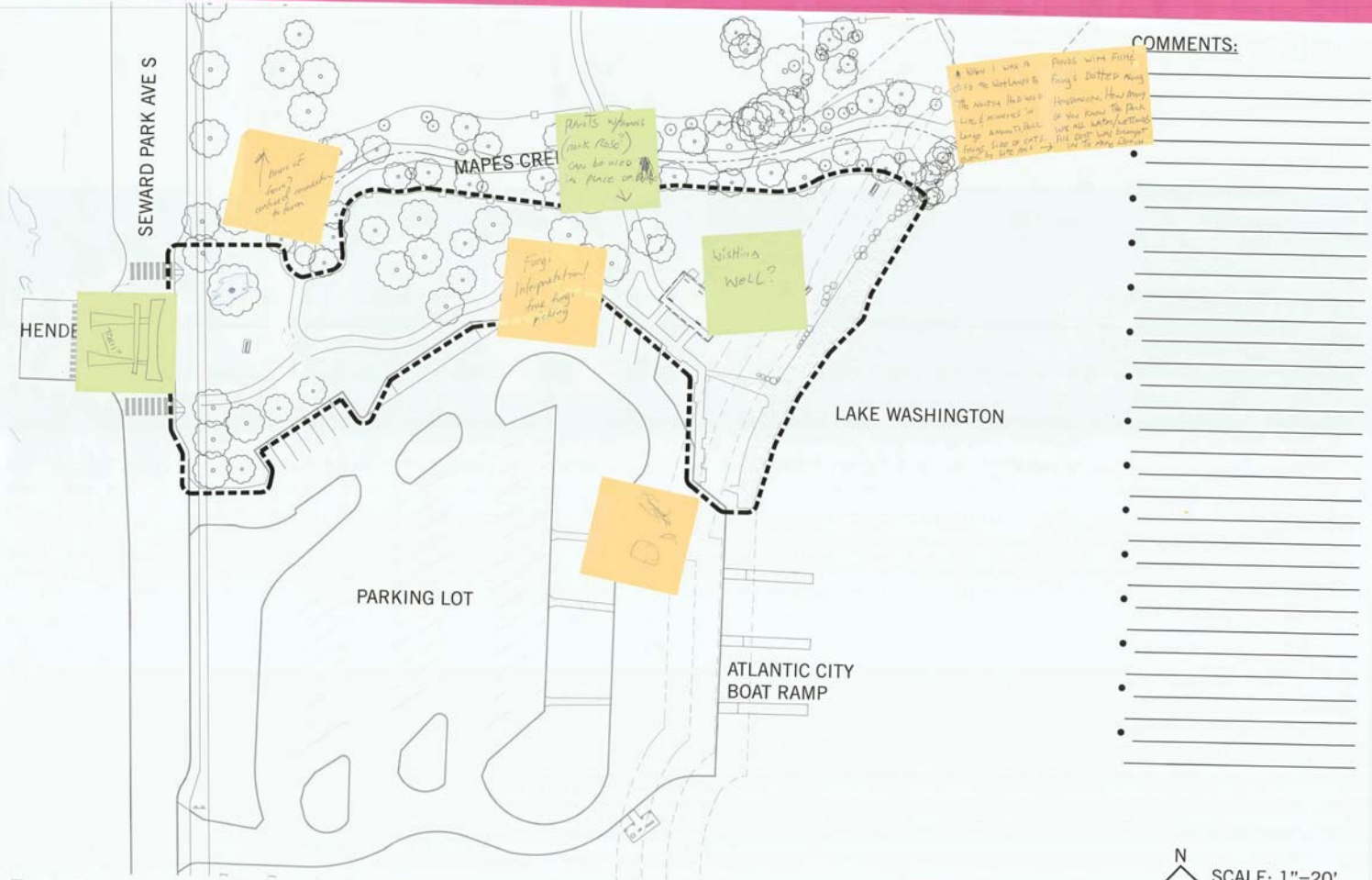
- COMMENTS:**
- utilize preservation wetland protection
  - Safety review high activity
  - Improve overall environment
  - Better sign.
  - walking paths that connects (perimeter)
  - Place for bikes, but separate from walkers
  - artwork that reflects our community cultural diversity
  - want it to have unique charms to reduce human impact
  - look over look is protection dock along the beach
  - clean up water - make it swimmable
  - add low path lighting
  - fishing prep zone
  - add a grill
  - Concession stand - support ~~park~~ can be better students
  - Picnic Shelter - for larger gatherings
  - picnic table & benches
  - add an structure for weddings/ceremonies
  - make the space reservable
  - Clean bathroom keep it clean

BE'ER SHEVA PARK IMPROVEMENTS

March 3, 2018

N SCALE: 1"=20'

# BE'ER SHEVA PARK IMPROVEMENT AREA



## BE'ER SHEVA PARK IMPROVEMENTS

March 3, 2018



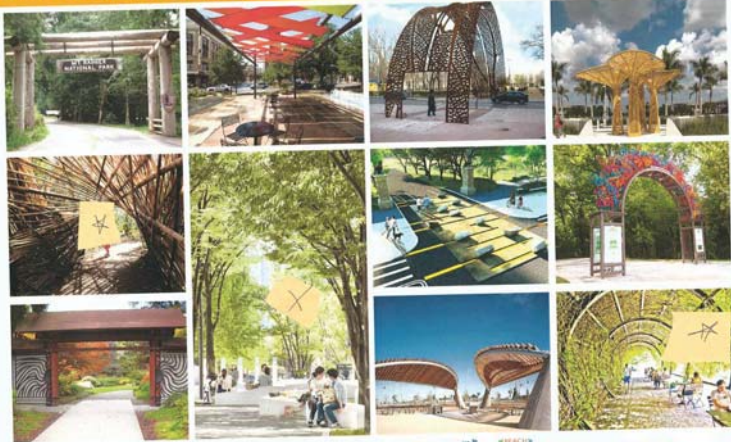
Seattle Neighborhoods

N SCALE: 1"=20'





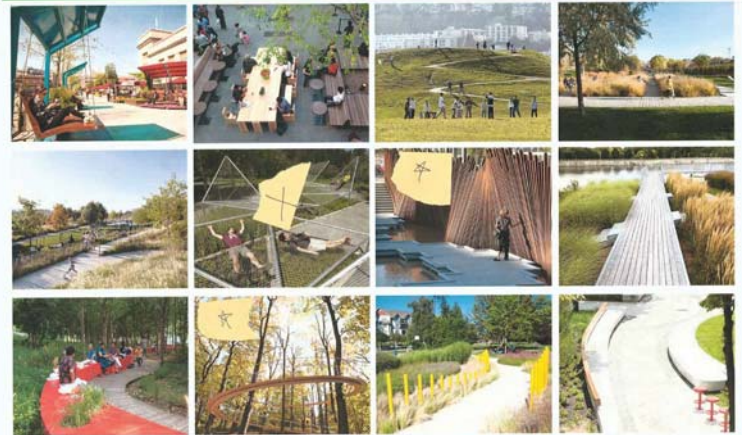
## GATEWAY | INSPIRATIONAL IMAGERY



BE'ER SHEVA PARK IMPROVEMENTS  
March 3, 2018



## CONNECTION | INSPIRATIONAL IMAGERY



BE'ER SHEVA PARK IMPROVEMENTS  
March 3, 2018



## DESTINATION | INSPIRATIONAL IMAGERY



BE'ER SHEVA PARK IMPROVEMENTS  
March 3, 2018

