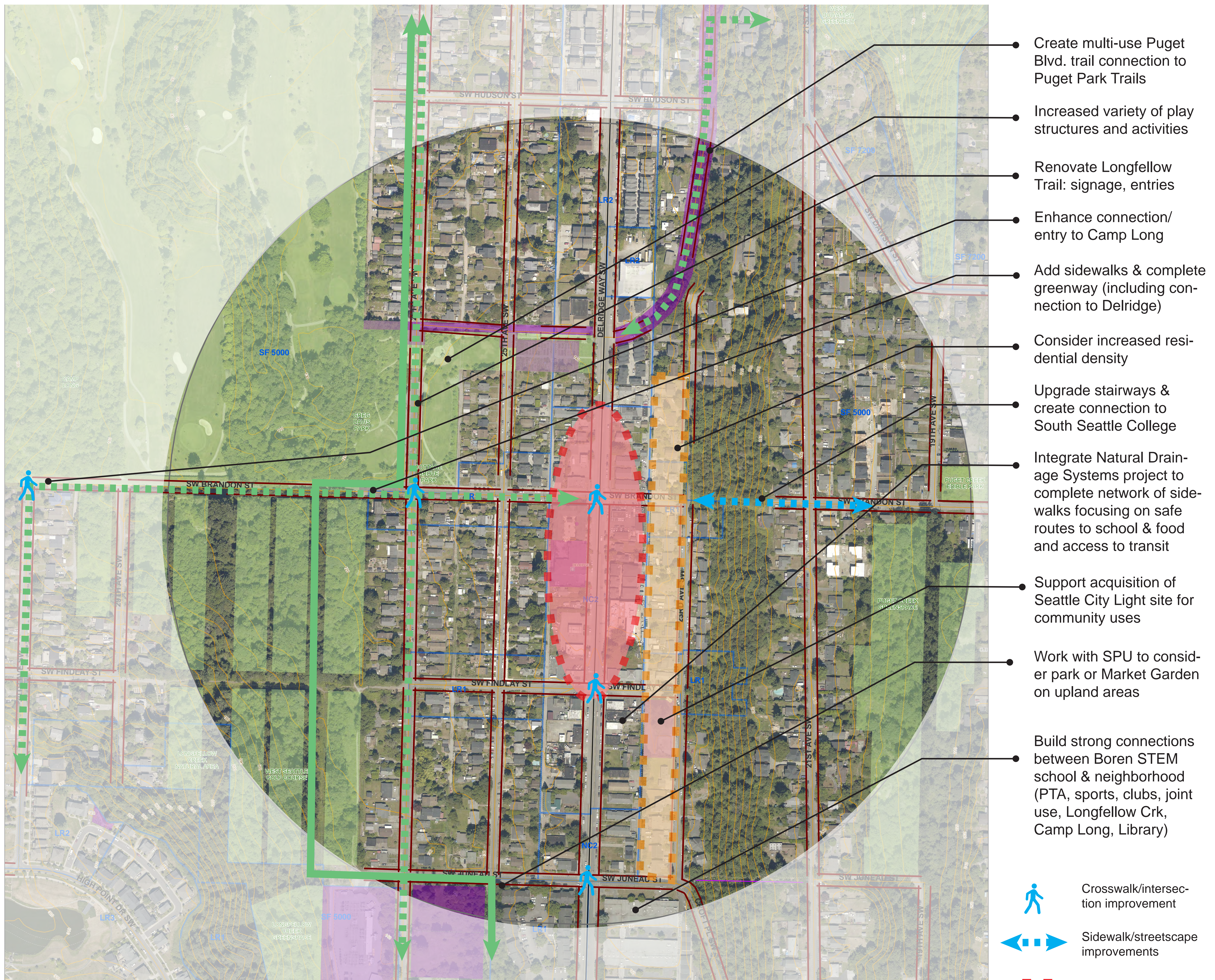


Brandon Node

Brandon (Center) Node: Create Identity as a Community and Food Destination

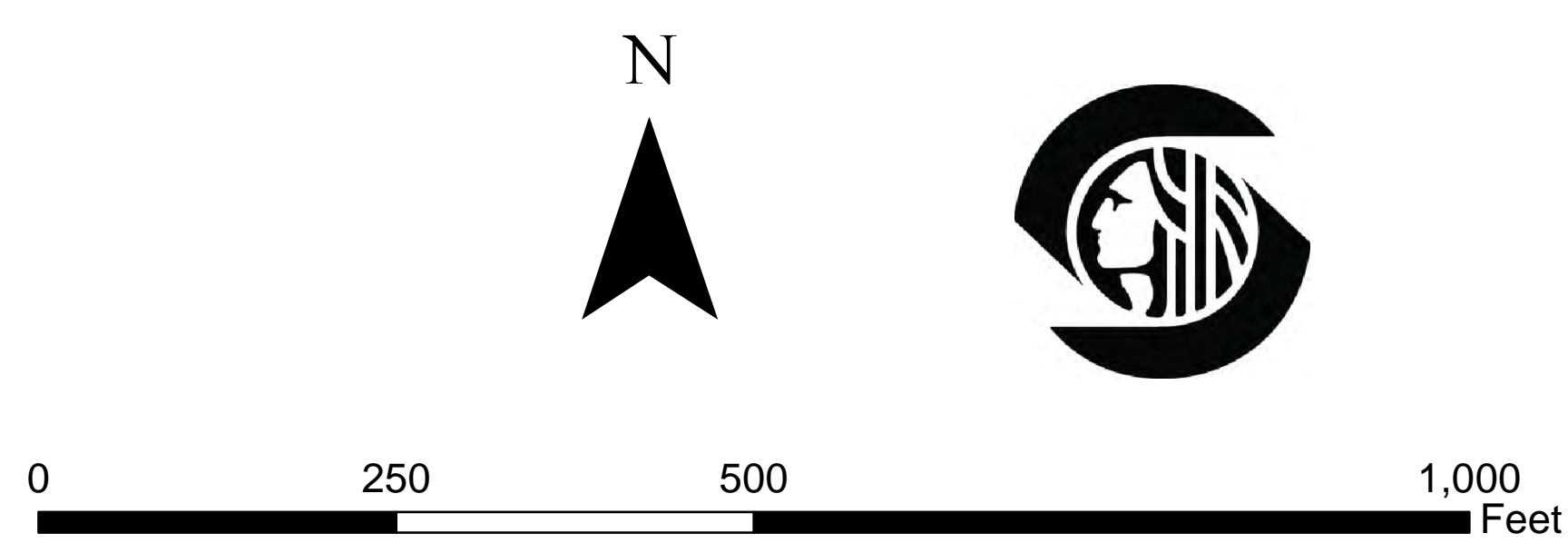
- Create strong design identity with lighting trees, sidewalks and design guidelines, etc.
- Support Delridge Grocery
- Work with HSD's mobile Food Truck expansion to increase affordable food access
- Create long-term seasonal farmers market
- Consider Market Garden element to augment P-Patch
- Advertise restaurants
- Support growth of food businesses like Commissary Kitchen & Integrate food trucks into events



- Create multi-use Puget Blvd. trail connection to Puget Park Trails
- Increased variety of play structures and activities
- Renovate Longfellow Trail: signage, entries
- Enhance connection/entry to Camp Long
- Add sidewalks & complete greenway (including connection to Delridge)
- Consider increased residential density
- Upgrade stairways & create connection to South Seattle College
- Integrate Natural Drainage Systems project to complete network of sidewalks focusing on safe routes to school & food and access to transit
- Support acquisition of Seattle City Light site for community uses
- Work with SPU to consider park or Market Garden on upland areas
- Build strong connections between Boren STEM school & neighborhood (PTA, sports, clubs, joint use, Longfellow Crk, Camp Long, Library)

Legend

- Swimming Pools
- Branch Libraries
- Community Centers
- Public School
- Stairway
- Sidewalks
- 1/4 mile buffer
- Pavement Edge
- Parks
- City Property - Subject Parcels Dept
- Topography - 10 Foot
- Zoning - Category



DPD Draft 6/3/2015

- Crosswalk/intersection improvement
- Sidewalk/streetscape improvements
- Commercial mixed use areas
- Residential areas
- Existing Greenways
- Planned Greenways