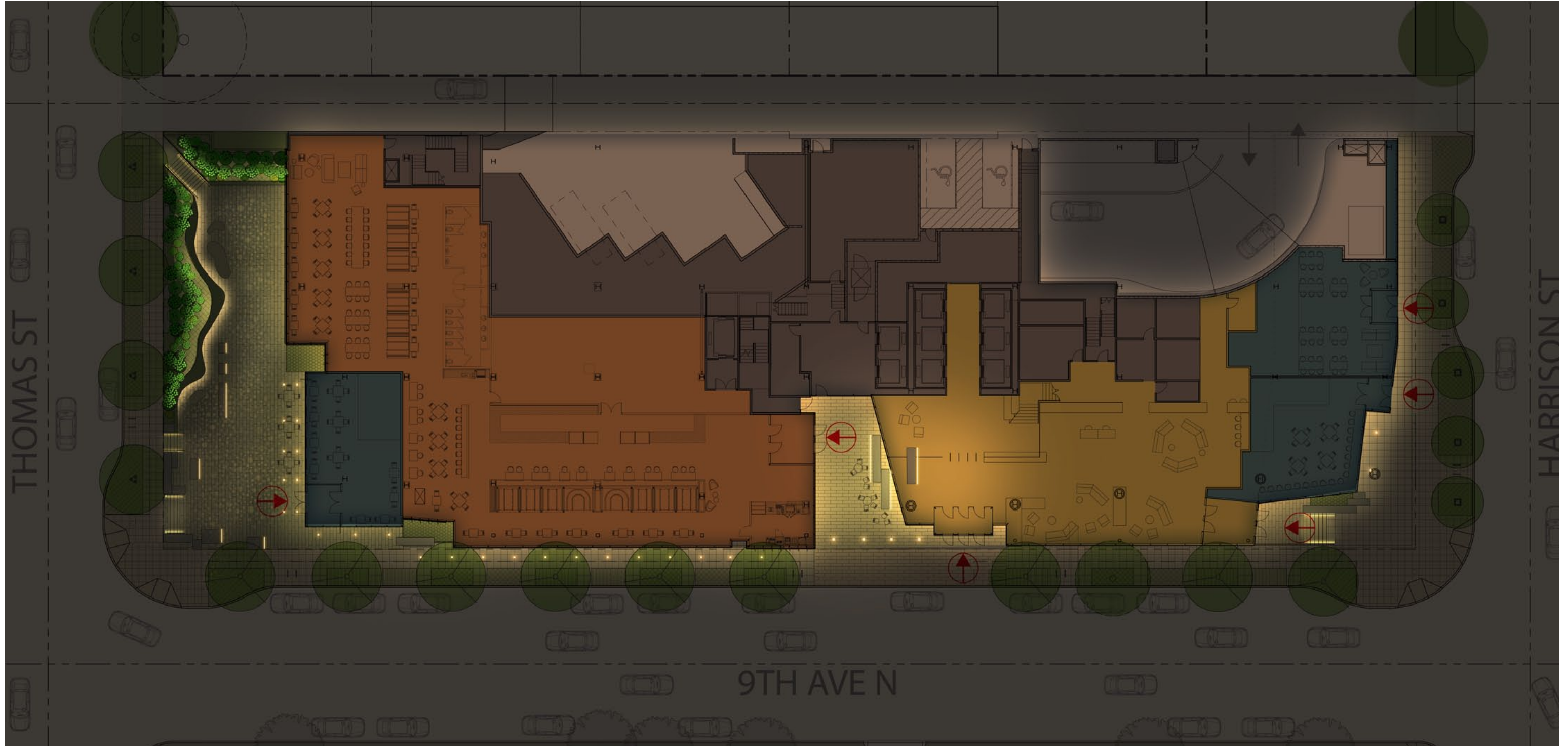


Site Lighting



GRAPHITE

A-30

OCULUS
LIGHT STUDIO

Open Space and Landscape Development

325 9th Avenue North

12018.00

Design Recommendation

July 17, 2013



VULCAN

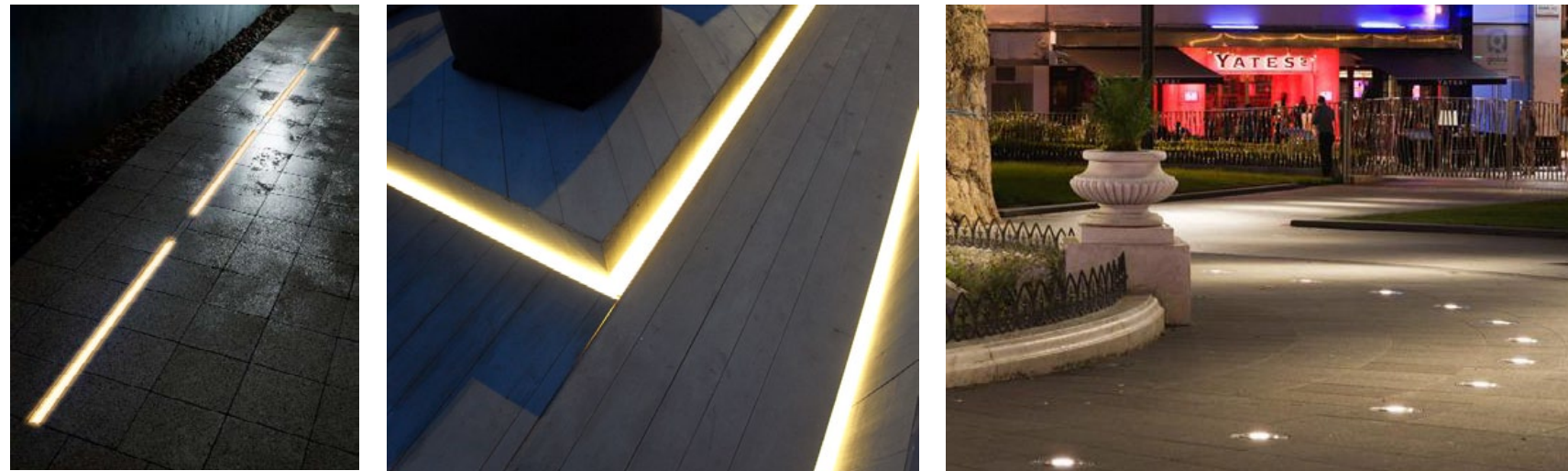
South Plaza

Uplit bamboo planting surrounds the space, with lighting integrated within handrails and under the undulating seat walls. Linear ingrades and moonlight complete the lighting composition.



Porch

Soft ingrade uplights light the porch frame. Linear ingrade uplights illuminate blocks of stone. Recessed lighting in the ceiling, provides an overall glow.

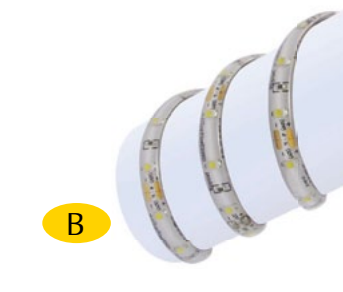
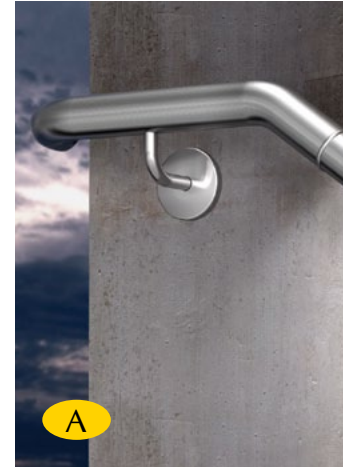
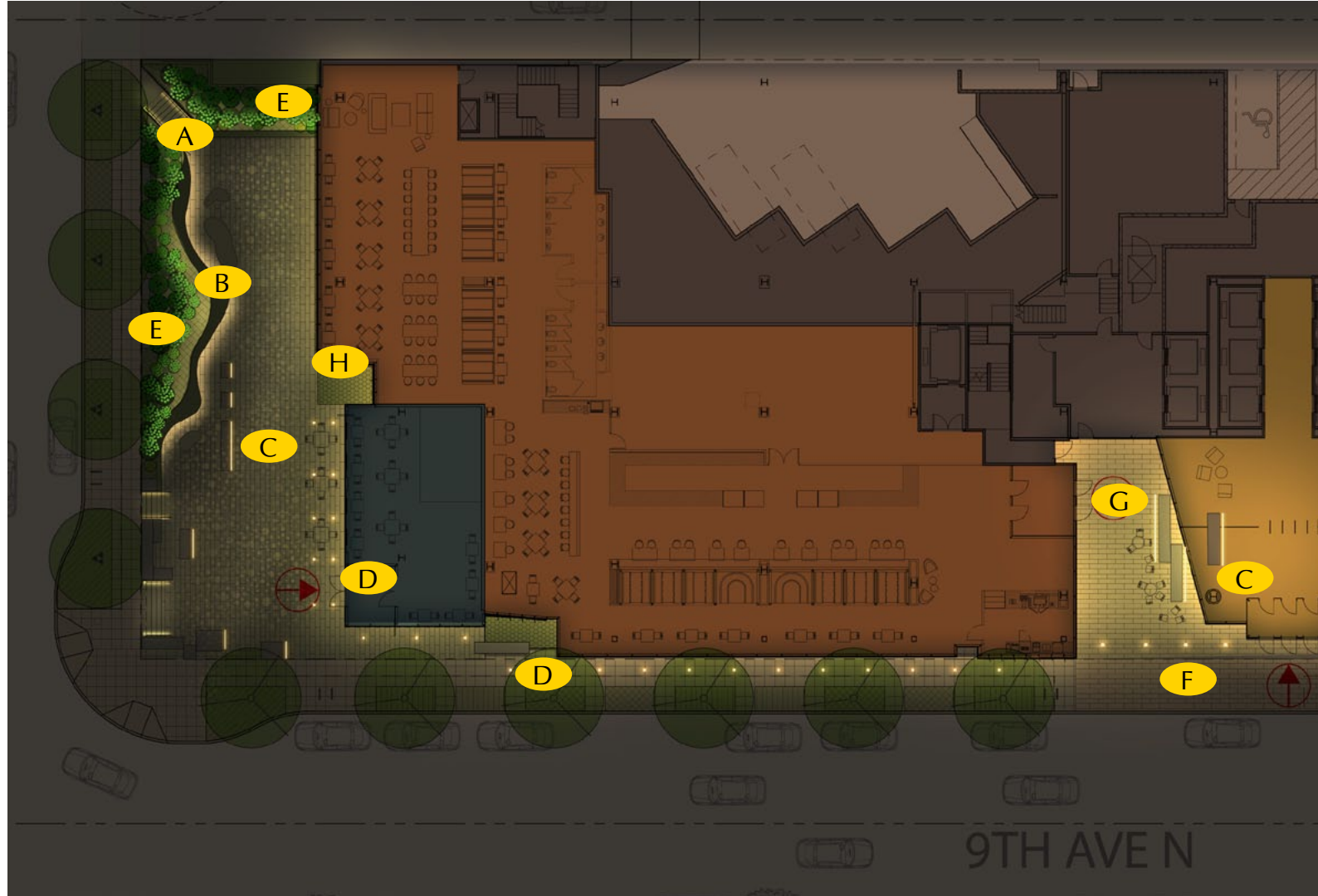


Canopies and Northeast Entry

Lights within handrails, and small LED downlights integrated within canopies, provide functional lighting with minimal lighting hardware.



Site Lighting



- A** LED lighting for steps integrated within handrails
- B** LED linear lighting under undulating seatwall
- C** LED linear ingrade uplight alongside stone blocks
- D** LED small profile downlight at canopies
- E** LED uplight located within bamboo planting
- F** LED ingrade uplight with frosted lens to light Porch "frame"
- G** LED linear downlights located within Porch ceiling
- H** Metal halide pattern projectors mounted off building for dappled light on Plaza



GRAPHITE

A-32



Open Space and Landscape Development

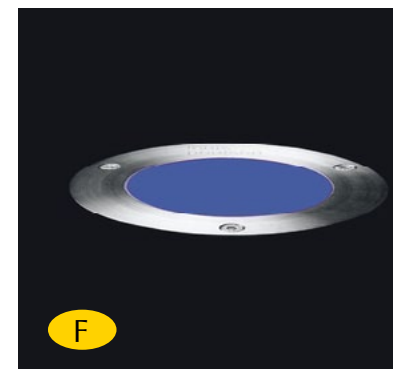
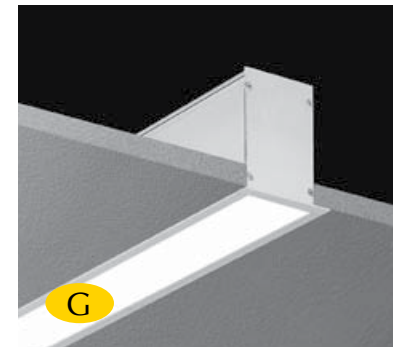
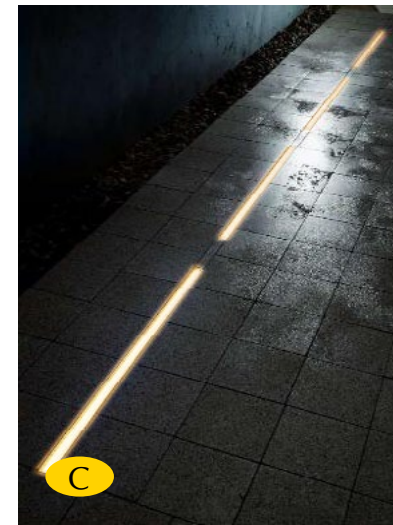
325 9th Avenue North
12018.00

Design Recommendation
July 17, 2013





- A** LED lighting for steps integrated within handrails
- B** LED linear lighting under undulating seatwall
- C** LED linear ingrade uplight alongside stone blocks
- D** LED small profile downlight at canopies
- E** LED uplight located within bamboo planting
- F** LED ingrade uplight with frosted lens to light Porch "frame"
- G** LED linear downlights located within Porch ceiling
- H** Metal halide pattern projectors mounted off building for dappled light on Plaza



LIGHTING / SIGNAGE



Recessed soffit lighting to match soffit color



Wall mounted sconce



Step and path lighting



Landscape lighting

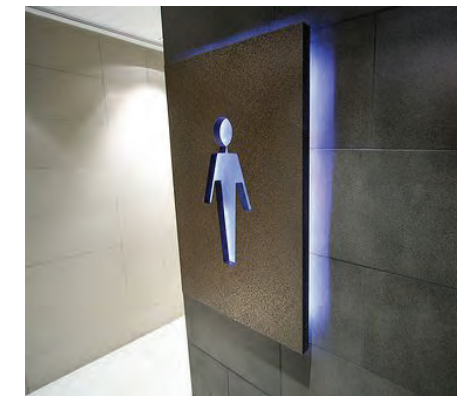
Signage infrastructure for both types of signage may be provided at commercial spaces and live work units

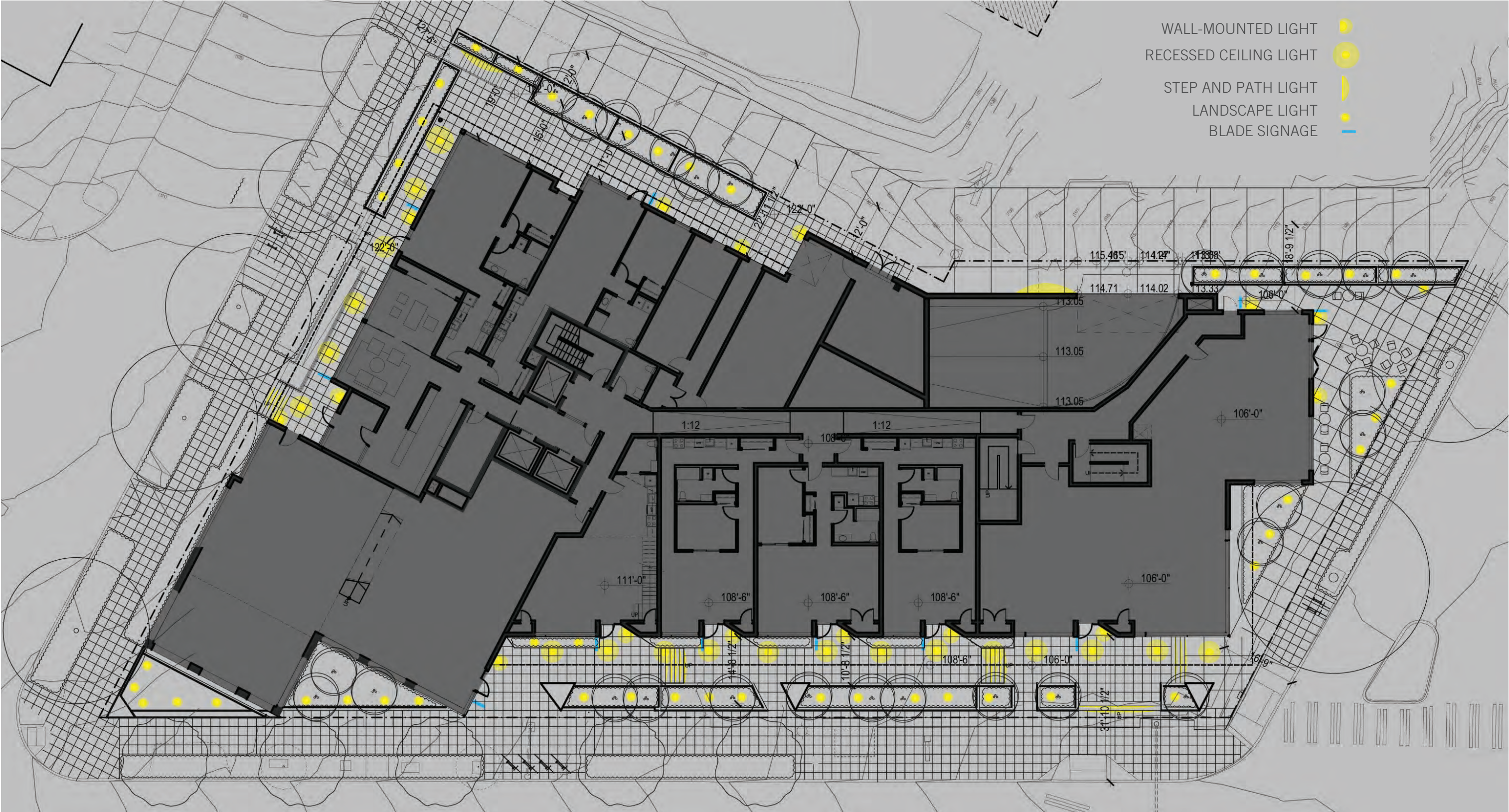


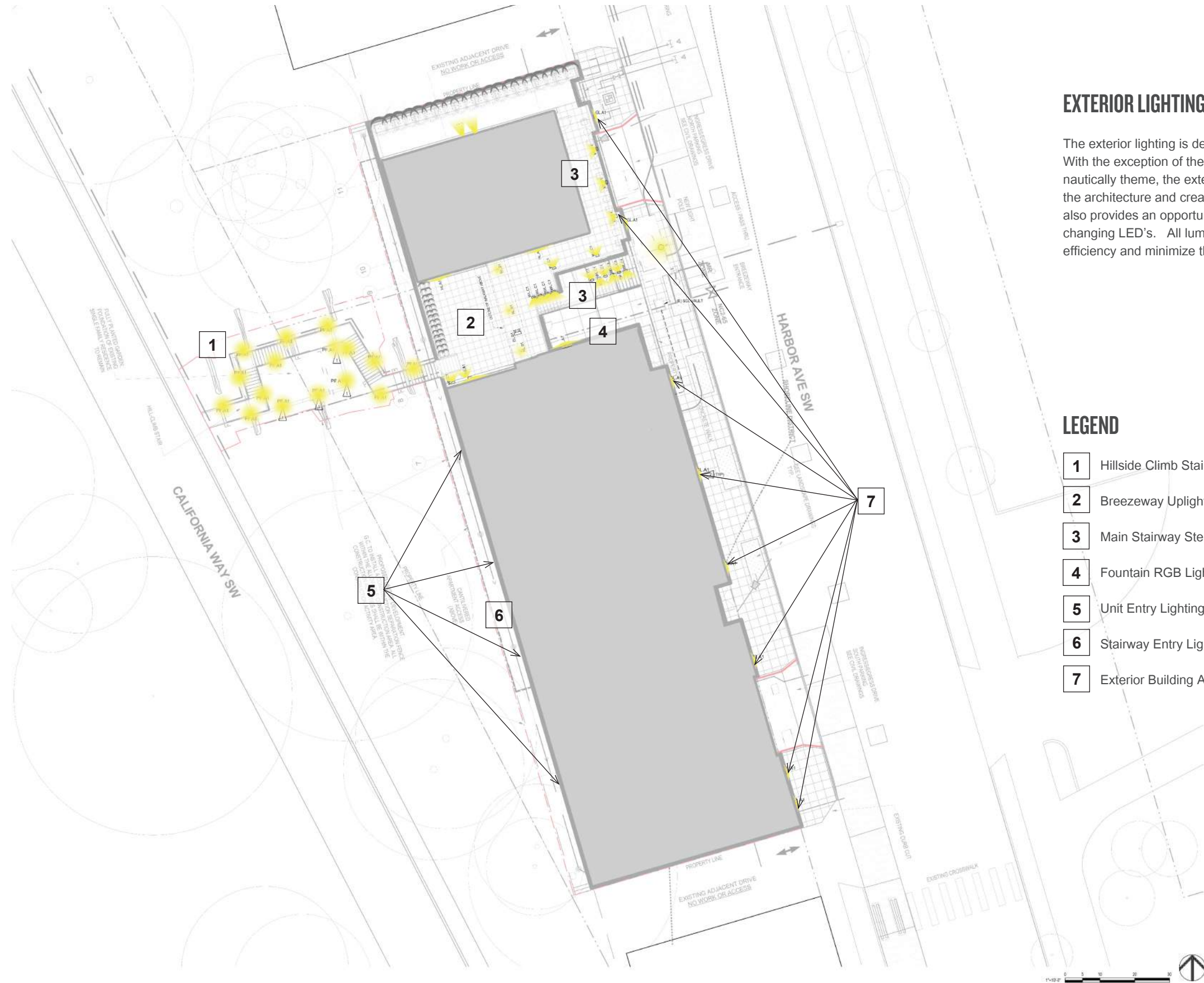
Blade signage



Back-lit wall mount signage







EXTERIOR LIGHTING CONCEPT

The exterior lighting is designed for simplicity, energy efficiency and maintainability. With the exception of the hill climb lighting, which is utilitarian with a slightly nautically theme, the exterior lighting relies on illuminated surfaces to accentuate the architecture and create opportunities for dramatic silhouettes. The water feature also provides an opportunity to create a colorful focal point through the use of color changing LED's. All luminaires will utilize LED technology to maximize energy efficiency and minimize the need for maintenance.

LEGEND

- 1** Hillside Climb Stairway Lighting
- 2** Breezeway Uplighting
- 3** Main Stairway Step Lighting
- 4** Fountain RGB Lighting
- 5** Unit Entry Lighting
- 6** Stairway Entry Lighting
- 7** Exterior Building Accent Lighting

LIGHTING DESIGN CONCEPTS & FIXTURES



1 CONCEPT IMAGE: HILL CLIMB LIGHTING



CONCEPT RENDERING: PATHWAY LIGHTING ALONG HILL CLIMB



PROJECT RENDERING: LIT PATHWAY FROM CALIFORNIA STREET



PRIMARY FIXTURE



2 PROJECT RENDERING: UPLIGHTING, BREEZEWAY



PRIMARY FIXTURE



3 CONCEPT IMAGES: MAIN STAIRWAY STEP LIGHTING AND PATIO LIGHTING



PRIMARY FIXTURE



4 FOUNTAIN RGB LIGHT



5 UNIT ENTRY FIXTURE



6 STAIRWAY ENTRY FIXTURE



7 CONCEPT IMAGE: EXTERIOR BUILDING ACCENT LIGHTING



PROJECT RENDERING: UPLIGHTING ON HARBOR AVENUE FACADE



PRIMARY FIXTURE



SIGNAGE CONCEPTS

- ① CRAFTSMANSHIP
- ② MATERIALITY
- ③ COLOR & EXCITEMENT

SIGNAGE LOCATIONS

- A** RESTAURANT SIGNAGE LOCATION
- B** RESIDENTIAL ENTRANCE SIGNAGE
- C** STORE FRONT SIGNAGE
- D** RETAIL SIGNAGE, TBD
- E** TENANT SIGNAGE, TBD
- F** PARKING SIGNAGE, TBD

SIGNAGE DESIGN CONCEPTS

① CRAFTSMANSHIP



MIXED MATERIALS



CUT STEEL PLATE



MILL CUT WOOD



CUT STEEL PLATE

② MATERIALITY



WEATHERED STEEL



RAW METAL AND WOOD



MILLED ALUMINUM



STEEL, WOOD AND CONCRETE

③ EXCITEMENT & COLOR



INFILL COLOR



GRAPHIC SURFACES AND COLOR



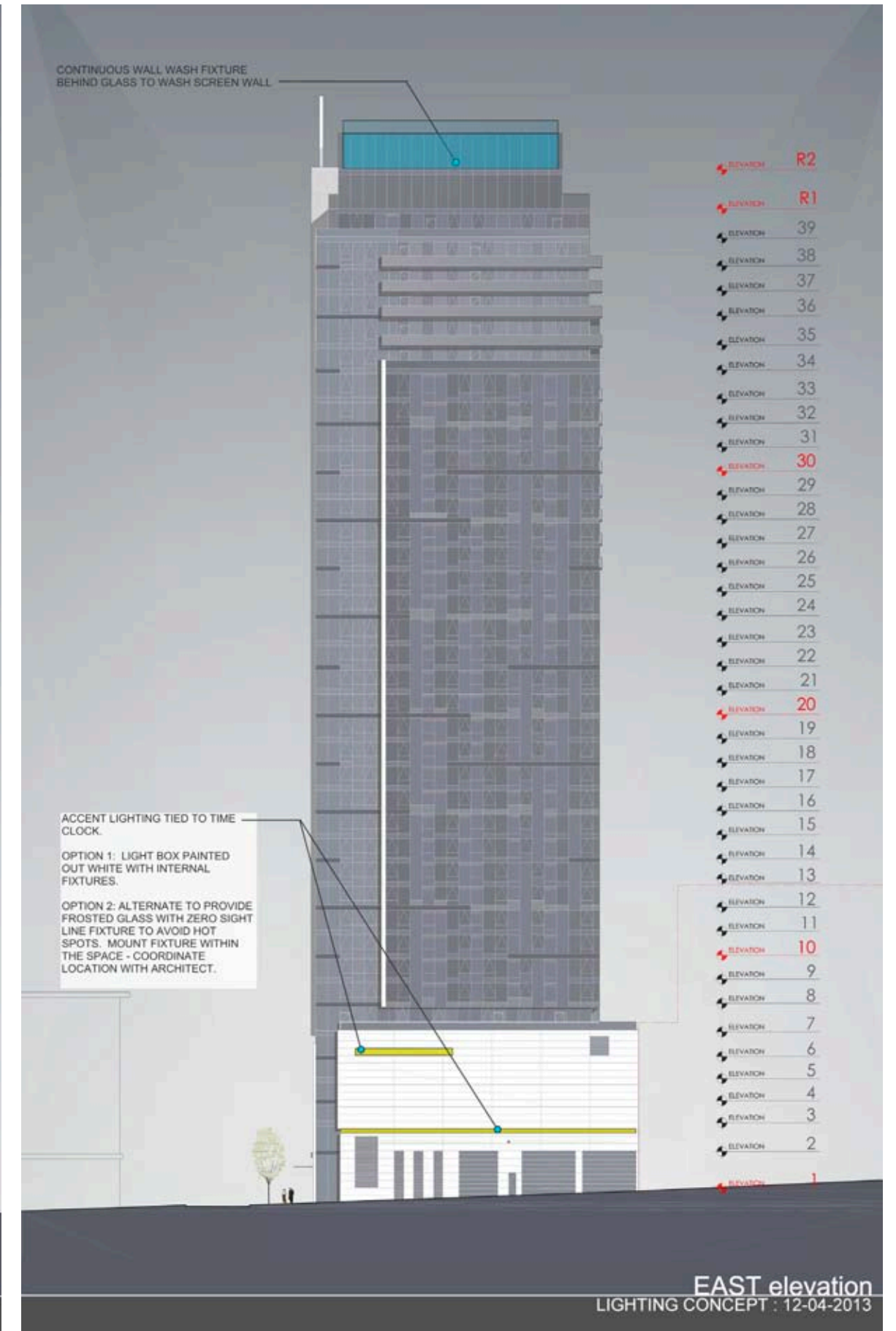
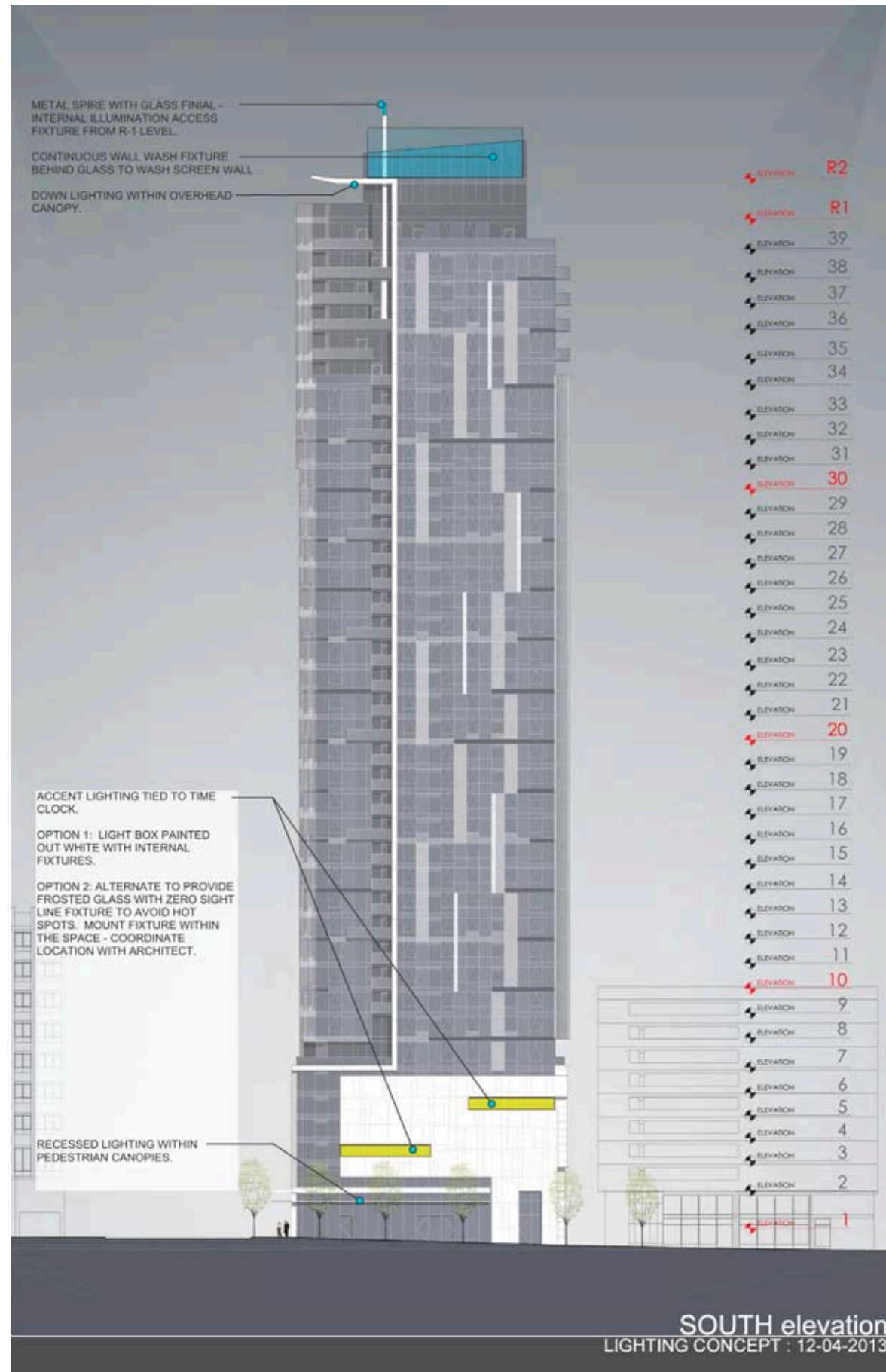
LARGE LETTERING



LIGHT AND COLOR



LIGHTING



BUILDING SIGNAGE



WEST ELEVATION SIGNAGE



SOUTH ELEVATION SIGNAGE